

Home data report

1803 Forres Ave, St Joseph, MI, US



Total Area: 1554 sq. ft

Basement: 0 sq. ft, 1st Floor: 1554 sq. ft

Excluded: Utility 437 sq. ft, Basement 419 sq. ft, Billiard room 279 sq. ft, Storage 227 sq. ft, Undefined 14 sq. ft, Walls: 172 sq. ft

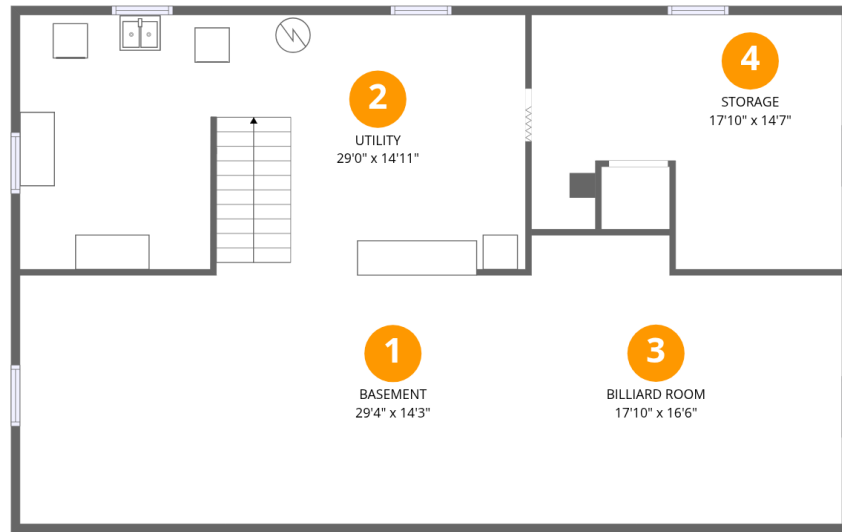
Property summary

 **2** Floors

 **3** Bedrooms

 **1** Bathrooms

 **1** Half baths



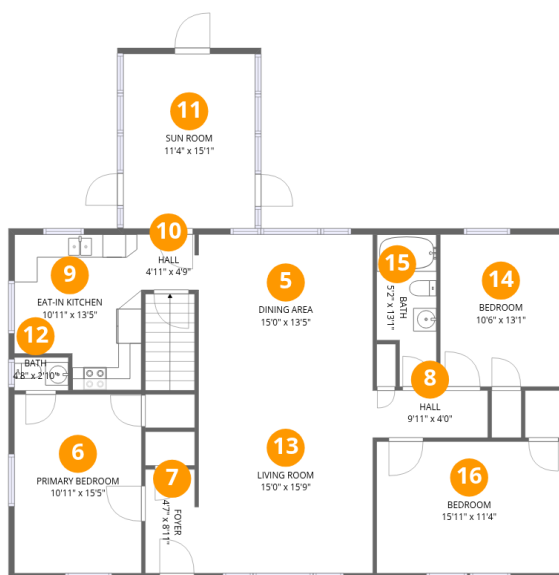
Room dimensions

Floor 1 Below grade

Total: 0sqft

Excluded: 1376sqft

| # | | Dimensions | sqft | Counted as living area |
|---|---------------|----------------|------------|------------------------|
| 1 | Basement | 29'4" x 14'3" | 419 sq. ft | No |
| 2 | Utility | 29'0" x 14'11" | 425 sq. ft | No |
| 3 | Billiard Room | 17'10" x 16'6" | 272 sq. ft | No |
| 4 | Storage | 17'10" x 14'7" | 223 sq. ft | No |



Room dimensions

Floor 2

Total: 1554 sqft Excluded: 0 sqft

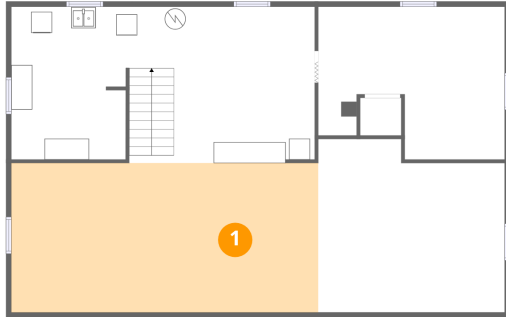
| # | | Dimensions | sqft | Counted as living area |
|----|-----------------|----------------|------------|------------------------|
| 5 | Dining Area | 15'0" x 13'5" | 202 sq. ft | Yes |
| 6 | Primary Bedroom | 10'11" x 15'5" | 169 sq. ft | Yes |
| 7 | Foyer | 4'7" x 8'11" | 40 sq. ft | Yes |
| 8 | Hall | 9'11" x 4'0" | 40 sq. ft | Yes |
| 9 | Eat-in Kitchen | 10'11" x 13'5" | 131 sq. ft | Yes |
| 10 | Hall | 4'11" x 4'9" | 23 sq. ft | Yes |
| 11 | Sun Room | 11'4" x 15'1" | 171 sq. ft | Yes |
| 12 | Bath | 4'8" x 2'10" | 13 sq. ft | Yes |
| 13 | Living Room | 15'0" x 15'9" | 236 sq. ft | Yes |
| 14 | Bedroom | 10'6" x 13'1" | 137 sq. ft | Yes |
| 15 | Bath | 5'2" x 13'1" | 60 sq. ft | Yes |

Home data report

1803 Forres Ave, St Joseph, MI, US

| # | | Dimensions | sqft | Counted as living area |
|----|---------|----------------|------------|------------------------|
| 16 | Bedroom | 15'11" x 11'4" | 181 sq. ft | Yes |

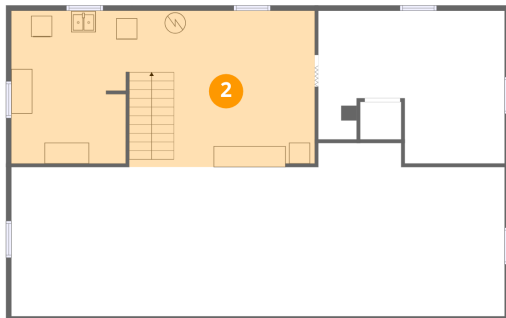
1 Floor 1 - Basement



Dimensions: 29'4" x 14'3"
Area: 419 sq. ft
Counted as living area: No

Heated: Yes
Finished: No
Enclosed: Yes
Contiguous: Yes
Permitted: Yes
Wet space: No
Addition: No
Conversion: No

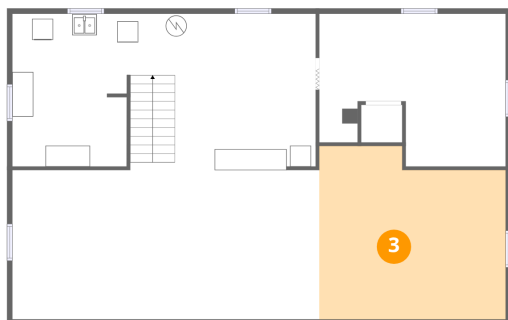
2 Floor 1 - Utility



Dimensions: 29'0" x 14'11"
Area: 425 sq. ft
Counted as living area: No

Heated: Yes
Finished: No
Enclosed: Yes
Contiguous: Yes
Permitted: Yes
Wet space: No
Addition: No
Conversion: No

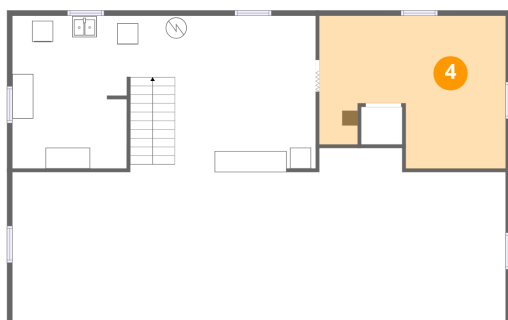
3 Floor 1 - Billiard Room



Dimensions: 17'10" x 16'6"
Area: 272 sq. ft
Counted as living area: No

Heated: Yes
Finished: No
Enclosed: Yes
Contiguous: Yes
Permitted: Yes
Wet space: No
Addition: No
Conversion: No

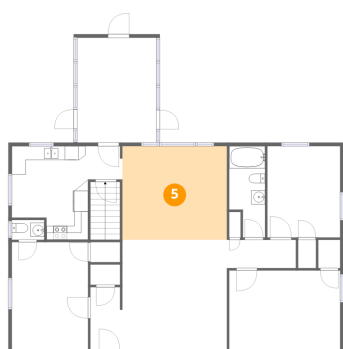
4 Floor 1 - Storage



Dimensions: 17'10" x 14'7"
Area: 223 sq. ft
Counted as living area: No

Heated: No
Finished: No
Enclosed: No
Contiguous: Yes
Permitted: Yes
Wet space: No
Addition: No
Conversion: No

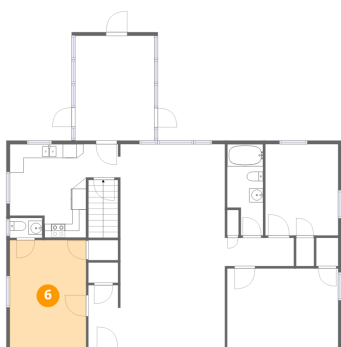
5 Floor 2 - Dining Area



Dimensions: 15'0" x 13'5"
Area: 202 sq. ft
Counted as living area: Yes

Heated: Yes
Finished: Yes
Enclosed: Yes
Contiguous: Yes
Permitted: Yes
Wet space: No
Addition: No
Conversion: No

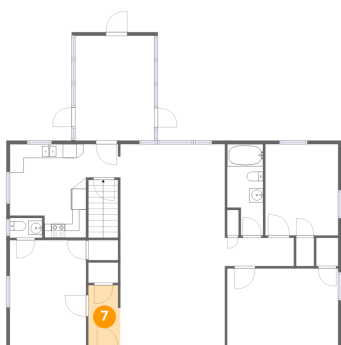
6 Floor 2 - Primary Bedroom



Dimensions: 10'11" x 15'5"
Area: 169 sq. ft
Counted as living area: Yes

Heated: Yes
Finished: Yes
Enclosed: Yes
Contiguous: Yes
Permitted: Yes
Wet space: No
Addition: No
Conversion: No

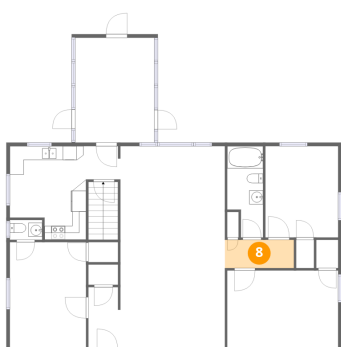
7 Floor 2 - Foyer



Dimensions: 4'7" x 8'11"
Area: 40 sq. ft
Counted as living area: Yes

Heated: Yes
Finished: Yes
Enclosed: Yes
Contiguous: Yes
Permitted: Yes
Wet space: No
Addition: No
Conversion: No

8 Floor 2 - Hall



Dimensions: 9'11" x 4'0"
Area: 40 sq. ft
Counted as living area: Yes

Heated: Yes
Finished: Yes
Enclosed: Yes
Contiguous: Yes
Permitted: Yes
Wet space: No
Addition: No
Conversion: No

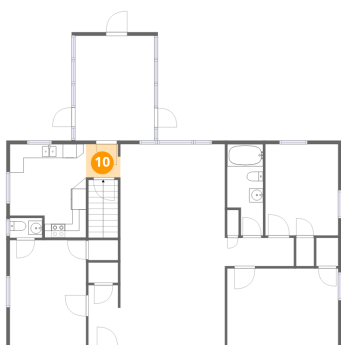
9 Floor 2 - Eat-in Kitchen



Dimensions: 10'11" x 13'5"
Area: 131 sq. ft
Counted as living area: Yes

Heated: Yes
Finished: Yes
Enclosed: Yes
Contiguous: Yes
Permitted: Yes
Wet space: No
Addition: No
Conversion: No

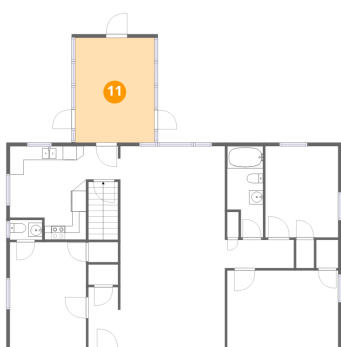
10 Floor 2 - Hall



Dimensions: 4'11" x 4'9"
Area: 23 sq. ft
Counted as living area: Yes

Heated: Yes
Finished: Yes
Enclosed: Yes
Contiguous: Yes
Permitted: Yes
Wet space: No
Addition: No
Conversion: No

11 Floor 2 - Sun Room



Dimensions: 11'4" x 15'1"
Area: 171 sq. ft
Counted as living area: Yes

Heated: Yes
Finished: Yes
Enclosed: Yes
Contiguous: Yes
Permitted: Yes
Wet space: No
Addition: No
Conversion: No

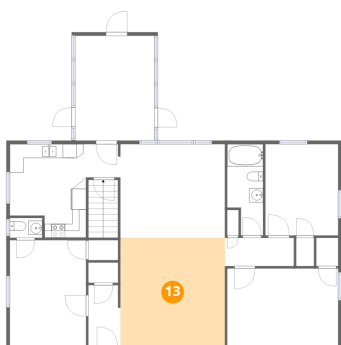
12 Floor 2 - Bath



Dimensions: 4'8" x 2'10"
Area: 13 sq. ft
Counted as living area: Yes

Heated: Yes
Finished: Yes
Enclosed: Yes
Contiguous: Yes
Permitted: Yes
Wet space: Yes
Addition: No
Conversion: No

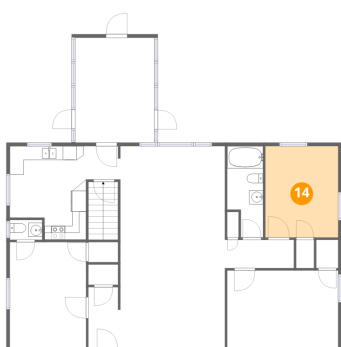
13 Floor 2 - Living Room



Dimensions: 15'0" x 15'9"
Area: 236 sq. ft
Counted as living area: Yes

Heated: Yes
Finished: Yes
Enclosed: Yes
Contiguous: Yes
Permitted: Yes
Wet space: No
Addition: No
Conversion: No

14 Floor 2 - Bedroom



Dimensions: 10'6" x 13'1"
Area: 137 sq. ft
Counted as living area: Yes

Heated: Yes
Finished: Yes
Enclosed: Yes
Contiguous: Yes
Permitted: Yes
Wet space: No
Addition: No
Conversion: No

15 Floor 2 - Bath



Dimensions: 5'2" x 13'1"
Area: 60 sq. ft
Counted as living area: Yes

Heated: Yes
Finished: Yes
Enclosed: Yes
Contiguous: Yes
Permitted: Yes
Wet space: Yes
Addition: No
Conversion: No

16 Floor 2 - Bedroom



Dimensions: 15'11" x 11'4"
Area: 181 sq. ft
Counted as living area: Yes

Heated: Yes
Finished: Yes
Enclosed: Yes
Contiguous: Yes
Permitted: Yes
Wet space: No
Addition: No
Conversion: No