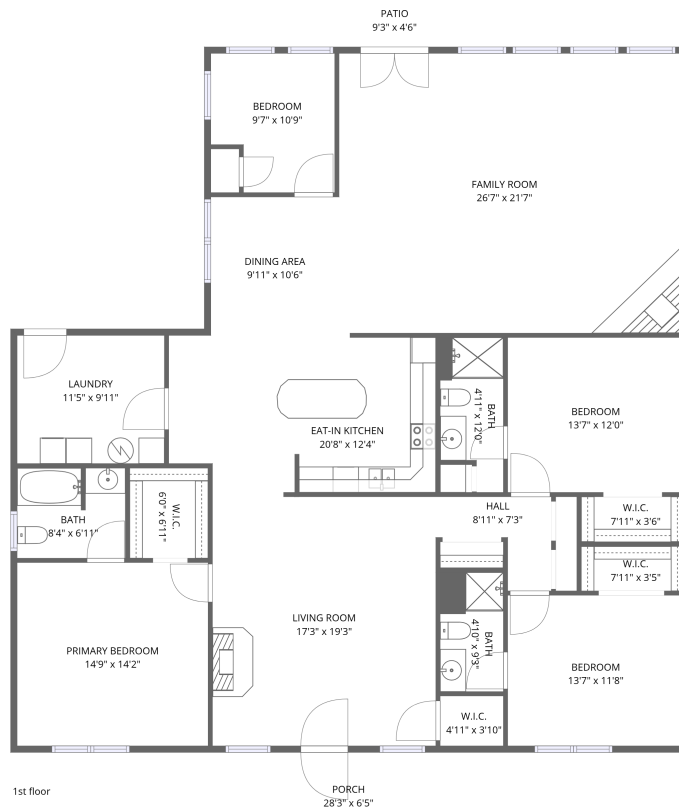


Home data report

**3721 Chaparral Drive, Kenwick Place, Cave Spring, Roanoke,
Roanoke County, Virginia, United States, 24018**



Total Area: 2429 sq. ft

1st Floor: 2429 sq. ft

Excluded: Patio 42 sq. ft, Porch 182 sq. ft, Walls: 106 sq. ft

Property summary

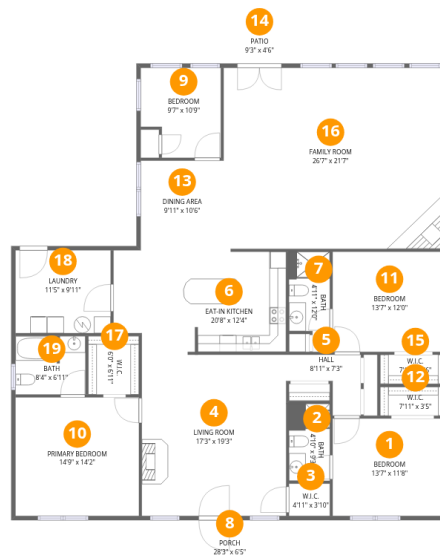
 **1** Floors

 **4** Bedrooms

 **3** Bathrooms

Home data report

3721 Chaparral Drive, Kenwick Place, Cave Spring, Roanoke, Roanoke County, Virginia, United States, 24018



Room dimensions

Floor 1

Total:2429sqft

Excluded: 224sqft

#		Dimensions	sqft	Counted as living area
1	Bedroom	13'7" x 11'8"	158 sq. ft	Yes
2	Bath	4'10" x 9'3"	45 sq. ft	Yes
3	W.I.C.	4'11" x 3'10"	19 sq. ft	Yes
4	Living Room	17'3" x 19'3"	332 sq. ft	Yes
5	Hall	8'11" x 7'3"	42 sq. ft	Yes
6	Eat-in Kitchen	20'8" x 12'4"	245 sq. ft	Yes
7	Bath	4'11" x 12'0"	51 sq. ft	Yes
8	Porch	28'3" x 6'5"	182 sq. ft	No
9	Bedroom	9'7" x 10'9"	94 sq. ft	Yes
10	Primary Bedroom	14'9" x 14'2"	209 sq. ft	Yes
11	Bedroom	13'7" x 12'0"	163 sq. ft	Yes

Home data report

**3721 Chaparral Drive, Kenwick Place, Cave Spring, Roanoke,
Roanoke County, Virginia, United States, 24018**

#		Dimensions	sqft	Counted as living area
12	W.I.C.	7'11" x 3'5"	27 sq. ft	Yes
13	Dining Area	9'11" x 10'6"	104 sq. ft	Yes
14	Patio	9'3" x 4'6"	42 sq. ft	No
15	W.I.C.	7'11" x 3'6"	28 sq. ft	Yes
16	Family Room	26'7" x 21'7"	576 sq. ft	Yes
17	W.I.C.	6'0" x 6'11"	42 sq. ft	Yes
18	Laundry	11'5" x 9'11"	113 sq. ft	Yes
19	Bath	8'4" x 6'11"	57 sq. ft	Yes

3721 Chaparral Drive, Kenwick Place, Cave Spring, Roanoke,
Roanoke County, Virginia, United States, 24018

1 Floor 1 - Bedroom



Dimensions: 13'7" x 11'8"
Area: 158 sq. ft
Counted as living area: Yes

Heated: Yes
Finished: Yes
Enclosed: Yes
Contiguous: Yes
Permitted: Yes
Wet space: No
Addition: No
Conversion: No

2 Floor 1 - Bath



Dimensions: 4'10" x 9'3"
Area: 45 sq. ft
Counted as living area: Yes

Heated: Yes
Finished: Yes
Enclosed: Yes
Contiguous: Yes
Permitted: Yes
Wet space: Yes
Addition: No
Conversion: No

3721 Chaparral Drive, Kenwick Place, Cave Spring, Roanoke, Roanoke County, Virginia, United States, 24018

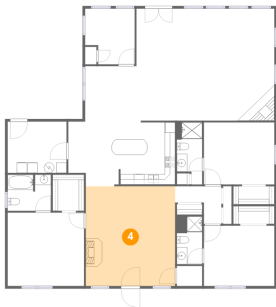
3 Floor 1 - W.I.C.



Dimensions: 4'11" x 3'10"
Area: 19 sq. ft
Counted as living area: Yes

Heated: Yes
Finished: Yes
Enclosed: Yes
Contiguous: Yes
Permitted: Yes
Wet space: No
Addition: No
Conversion: No

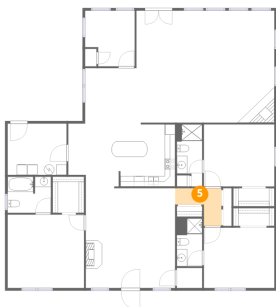
4 Floor 1 - Living Room



Dimensions: 17'3" x 19'3"
Area: 332 sq. ft
Counted as living area: Yes

Heated: Yes
Finished: Yes
Enclosed: Yes
Contiguous: Yes
Permitted: Yes
Wet space: No
Addition: No
Conversion: No

5 Floor 1 - Hall



Dimensions: 8'11" x 7'3"
Area: 42 sq. ft
Counted as living area: Yes

Heated: Yes
Finished: Yes
Enclosed: Yes
Contiguous: Yes
Permitted: Yes
Wet space: No
Addition: No
Conversion: No

3721 Chaparral Drive, Kenwick Place, Cave Spring, Roanoke,
Roanoke County, Virginia, United States, 24018

6 Floor 1 - Eat-in Kitchen



Dimensions: 20'8" x 12'4"
Area: 245 sq. ft
Counted as living area: Yes

Heated: Yes
Finished: Yes
Enclosed: Yes
Contiguous: Yes
Permitted: Yes
Wet space: No
Addition: No
Conversion: No

7 Floor 1 - Bath



Dimensions: 4'11" x 12'0"
Area: 51 sq. ft
Counted as living area: Yes

Heated: Yes
Finished: Yes
Enclosed: Yes
Contiguous: Yes
Permitted: Yes
Wet space: Yes
Addition: No
Conversion: No

8 Floor 1 - Porch

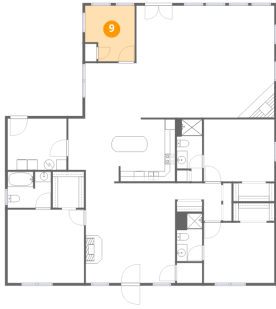


Dimensions: 28'3" x 6'5"
Area: 182 sq. ft
Counted as living area: No

Heated: No
Finished: No
Enclosed: No
Contiguous: Yes
Permitted: Yes
Wet space: No
Addition: No
Conversion: No

3721 Chaparral Drive, Kenwick Place, Cave Spring, Roanoke,
Roanoke County, Virginia, United States, 24018

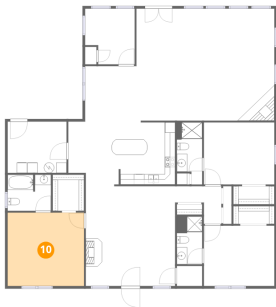
9 Floor 1 - Bedroom



Dimensions: 9'7" x 10'9"
Area: 94 sq. ft
Counted as living area: Yes

Heated: Yes
Finished: Yes
Enclosed: Yes
Contiguous: Yes
Permitted: Yes
Wet space: No
Addition: No
Conversion: No

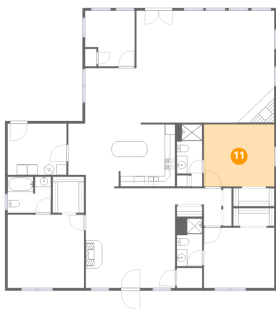
10 Floor 1 - Primary Bedroom



Dimensions: 14'9" x 14'2"
Area: 209 sq. ft
Counted as living area: Yes

Heated: Yes
Finished: Yes
Enclosed: Yes
Contiguous: Yes
Permitted: Yes
Wet space: No
Addition: No
Conversion: No

11 Floor 1 - Bedroom

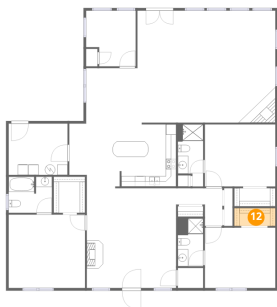


Dimensions: 13'7" x 12'0"
Area: 163 sq. ft
Counted as living area: Yes

Heated: Yes
Finished: Yes
Enclosed: Yes
Contiguous: Yes
Permitted: Yes
Wet space: No
Addition: No
Conversion: No

3721 Chaparral Drive, Kenwick Place, Cave Spring, Roanoke, Roanoke County, Virginia, United States, 24018

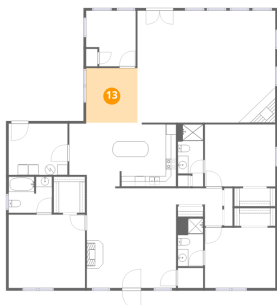
12 Floor 1 - W.I.C.



Dimensions: 7'11" x 3'5"
Area: 27 sq. ft
Counted as living area: Yes

Heated: Yes
Finished: Yes
Enclosed: Yes
Contiguous: Yes
Permitted: Yes
Wet space: No
Addition: No
Conversion: No

13 Floor 1 - Dining Area



Dimensions: 9'11" x 10'6"
Area: 104 sq. ft
Counted as living area: Yes

Heated: Yes
Finished: Yes
Enclosed: Yes
Contiguous: Yes
Permitted: Yes
Wet space: No
Addition: No
Conversion: No

14 Floor 1 - Patio

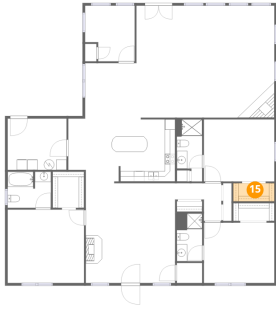


Dimensions: 9'3" x 4'6"
Area: 42 sq. ft
Counted as living area: No

Heated: No
Finished: No
Enclosed: No
Contiguous: Yes
Permitted: Yes
Wet space: No
Addition: No
Conversion: No

3721 Chaparral Drive, Kenwick Place, Cave Spring, Roanoke,
Roanoke County, Virginia, United States, 24018

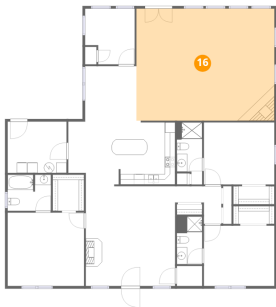
15 Floor 1 - W.I.C.



Dimensions: 7'11" x 3'6"
Area: 28 sq. ft
Counted as living area: Yes

Heated: Yes
Finished: Yes
Enclosed: Yes
Contiguous: Yes
Permitted: Yes
Wet space: No
Addition: No
Conversion: No

16 Floor 1 - Family Room



Dimensions: 26'7" x 21'7"
Area: 576 sq. ft
Counted as living area: Yes

Heated: Yes
Finished: Yes
Enclosed: Yes
Contiguous: Yes
Permitted: Yes
Wet space: No
Addition: No
Conversion: No

17 Floor 1 - W.I.C.

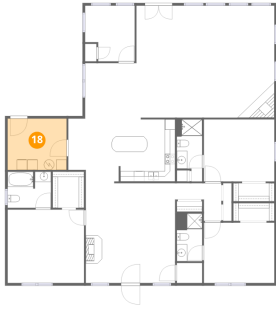


Dimensions: 6'0" x 6'11"
Area: 42 sq. ft
Counted as living area: Yes

Heated: Yes
Finished: Yes
Enclosed: Yes
Contiguous: Yes
Permitted: Yes
Wet space: No
Addition: No
Conversion: No

3721 Chaparral Drive, Kenwick Place, Cave Spring, Roanoke,
Roanoke County, Virginia, United States, 24018

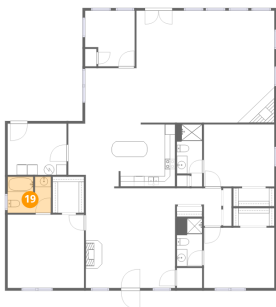
18 Floor 1 - Laundry



Dimensions: 11'5" x 9'11"
Area: 113 sq. ft
Counted as living area: Yes

Heated: Yes
Finished: Yes
Enclosed: Yes
Contiguous: Yes
Permitted: Yes
Wet space: No
Addition: No
Conversion: No

19 Floor 1 - Bath



Dimensions: 8'4" x 6'11"
Area: 57 sq. ft
Counted as living area: Yes

Heated: Yes
Finished: Yes
Enclosed: Yes
Contiguous: Yes
Permitted: Yes
Wet space: Yes
Addition: No
Conversion: No