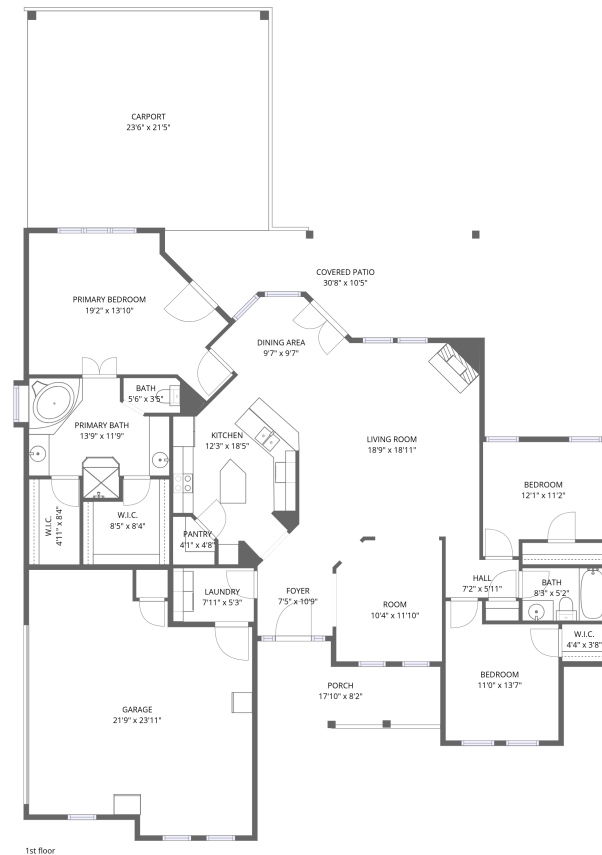


101 Idlewood Rd, Enchanted Oaks, TX, US



Total Area: 1742 sq. ft

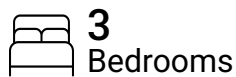
1st Floor: 1742 sq. ft

Excluded: Garage 495 sq. ft, Porch 119 sq. ft, Covered patio 248 sq. ft, Carport 500 sq. ft, Embedded window 4 sq. ft, Walls: 140 sq. ft

Property summary



1 Floors



3 Bedrooms

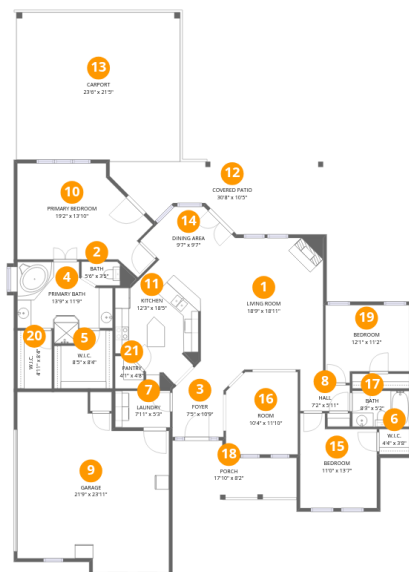


2 Bathrooms



1 Garages

101 Idlewood Rd, Enchanted Oaks, TX, US



Room dimensions

Floor 1

Total: 1742 sqft

Excluded: 1366 sqft

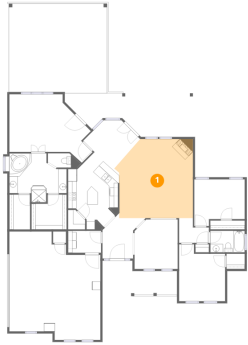
#		Dimensions	sqft	Counted as living area
1	Living Room	18'9" x 18'11"	354 sq. ft	Yes
2	Bath	5'6" x 3'5"	19 sq. ft	Yes
3	Foyer	7'5" x 10'9"	80 sq. ft	Yes
4	Primary Bath	13'9" x 11'9"	161 sq. ft	Yes
5	W.I.C.	8'5" x 8'4"	70 sq. ft	Yes
6	W.I.C.	4'4" x 3'8"	16 sq. ft	Yes
7	Laundry	7'11" x 5'3"	41 sq. ft	Yes
8	Hall	7'2" x 5'11"	42 sq. ft	Yes
9	Garage	21'9" x 23'11"	520 sq. ft	No
10	Primary Bedroom	19'2" x 13'10"	264 sq. ft	Yes
11	Kitchen	12'3" x 18'5"	225 sq. ft	Yes

Home data report

101 Idlewood Rd, Enchanted Oaks, TX, US

#		Dimensions	sqft	Counted as living area
12	Covered Patio	30'8" x 10'5"	319 sq. ft	No
13	Carport	23'6" x 21'5"	503 sq. ft	No
14	Dining Area	9'7" x 9'7"	92 sq. ft	Yes
15	Bedroom	11'0" x 13'7"	150 sq. ft	Yes
16	Room	10'4" x 11'10"	122 sq. ft	Yes
17	Bath	8'3" x 5'2"	42 sq. ft	Yes
18	Porch	17'10" x 8'2"	146 sq. ft	No
19	Bedroom	12'1" x 11'2"	135 sq. ft	Yes
20	W.I.C.	4'11" x 8'4"	41 sq. ft	Yes
21	Pantry	4'1" x 4'8"	19 sq. ft	Yes

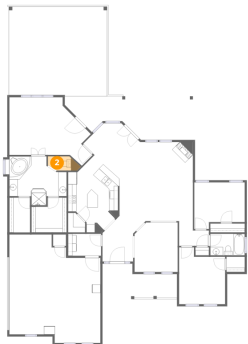
1 Floor 1 - Living Room



Dimensions: 18'9" x 18'11"
Area: 354 sq. ft
Counted as living area: Yes

Heated: Yes
Finished: Yes
Enclosed: Yes
Contiguous: Yes
Permitted: Yes
Wet space: No
Addition: No
Conversion: No

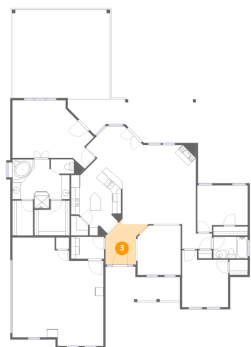
2 Floor 1 - Bath



Dimensions: 5'6" x 3'5"
Area: 19 sq. ft
Counted as living area: Yes

Heated: Yes
Finished: Yes
Enclosed: Yes
Contiguous: Yes
Permitted: Yes
Wet space: Yes
Addition: No
Conversion: No

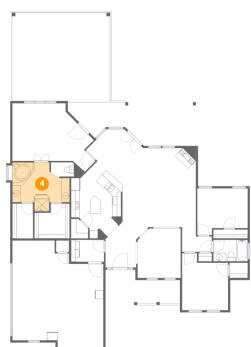
3 Floor 1 - Foyer



Dimensions: 7'5" x 10'9"
Area: 80 sq. ft
Counted as living area: Yes

Heated: Yes
Finished: Yes
Enclosed: Yes
Contiguous: Yes
Permitted: Yes
Wet space: No
Addition: No
Conversion: No

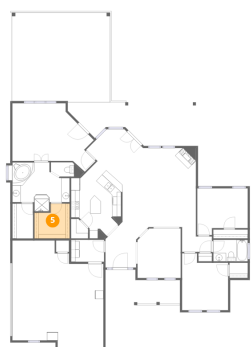
4 Floor 1 - Primary Bath



Dimensions: 13'9" x 11'9"
Area: 161 sq. ft
Counted as living area: Yes

Heated: Yes
Finished: Yes
Enclosed: Yes
Contiguous: Yes
Permitted: Yes
Wet space: Yes
Addition: No
Conversion: No

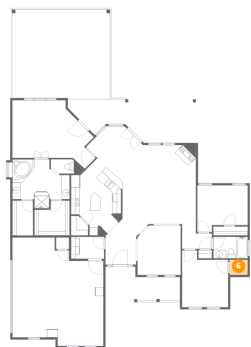
5 Floor 1 - W.I.C.



Dimensions: 8'5" x 8'4"
Area: 70 sq. ft
Counted as living area: Yes

Heated: Yes
Finished: Yes
Enclosed: Yes
Contiguous: Yes
Permitted: Yes
Wet space: No
Addition: No
Conversion: No

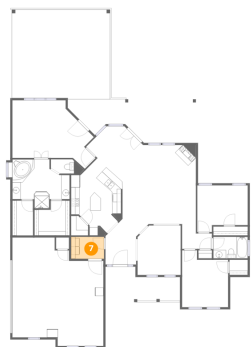
6 Floor 1 - W.I.C.



Dimensions: 4'4" x 3'8"
Area: 16 sq. ft
Counted as living area: Yes

Heated: Yes
Finished: Yes
Enclosed: Yes
Contiguous: Yes
Permitted: Yes
Wet space: No
Addition: No
Conversion: No

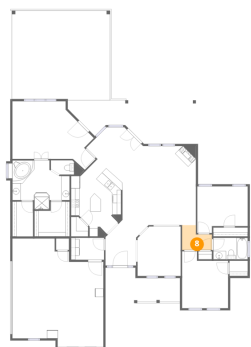
7 Floor 1 - Laundry



Dimensions: 7'11" x 5'3"
Area: 41 sq. ft
Counted as living area: Yes

Heated: Yes
Finished: Yes
Enclosed: Yes
Contiguous: Yes
Permitted: Yes
Wet space: No
Addition: No
Conversion: No

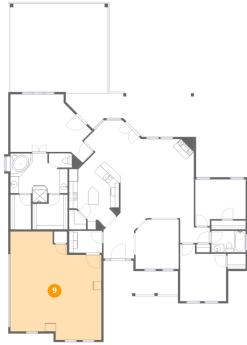
8 Floor 1 - Hall



Dimensions: 7'2" x 5'11"
Area: 42 sq. ft
Counted as living area: Yes

Heated: Yes
Finished: Yes
Enclosed: Yes
Contiguous: Yes
Permitted: Yes
Wet space: No
Addition: No
Conversion: No

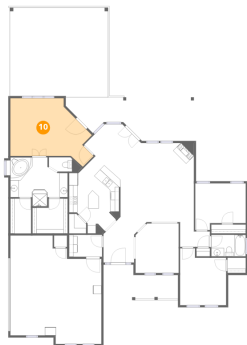
9 Floor 1 - Garage



Dimensions: 21'9" x 23'11"
Area: 520 sq. ft
Counted as living area: No

Heated: No
Finished: No
Enclosed: Yes
Contiguous: Yes
Permitted: Yes
Wet space: No
Addition: No
Conversion: No

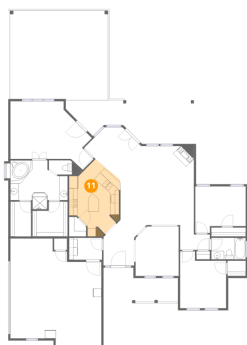
10 Floor 1 - Primary Bedroom



Dimensions: 19'2" x 13'10"
Area: 264 sq. ft
Counted as living area: Yes

Heated: Yes
Finished: Yes
Enclosed: Yes
Contiguous: Yes
Permitted: Yes
Wet space: No
Addition: No
Conversion: No

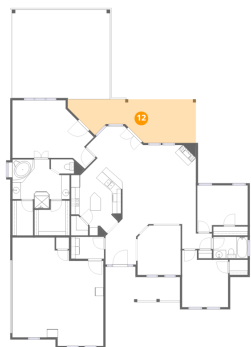
11 Floor 1 - Kitchen



Dimensions: 12'3" x 18'5"
Area: 225 sq. ft
Counted as living area: Yes

Heated: Yes
Finished: Yes
Enclosed: Yes
Contiguous: Yes
Permitted: Yes
Wet space: No
Addition: No
Conversion: No

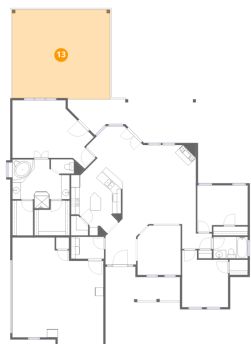
12 Floor 1 - Covered Patio



Dimensions: 30'8" x 10'5"
Area: 319 sq. ft
Counted as living area: No

Heated: No
Finished: No
Enclosed: No
Contiguous: Yes
Permitted: Yes
Wet space: No
Addition: No
Conversion: No

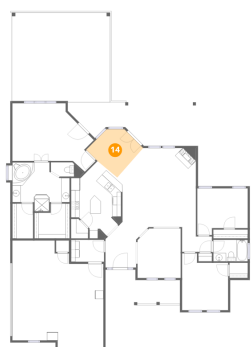
13 Floor 1 - Carport



Dimensions: 23'6" x 21'5"
Area: 503 sq. ft
Counted as living area: No

Heated: No
Finished: Yes
Enclosed: No
Contiguous: Yes
Permitted: Yes
Wet space: No
Addition: No
Conversion: No

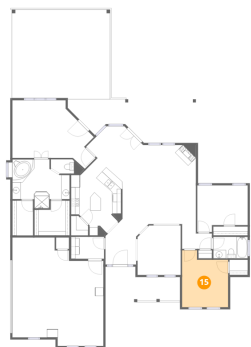
14 Floor 1 - Dining Area



Dimensions: 9'7" x 9'7"
Area: 92 sq. ft
Counted as living area: Yes

Heated: Yes
Finished: Yes
Enclosed: Yes
Contiguous: Yes
Permitted: Yes
Wet space: No
Addition: No
Conversion: No

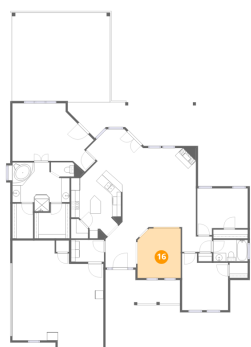
15 Floor 1 - Bedroom



Dimensions: 11'0" x 13'7"
Area: 150 sq. ft
Counted as living area: Yes

Heated: Yes
Finished: Yes
Enclosed: Yes
Contiguous: Yes
Permitted: Yes
Wet space: No
Addition: No
Conversion: No

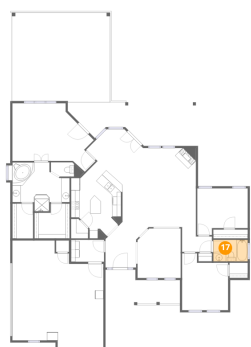
16 Floor 1 - Room



Dimensions: 10'4" x 11'10"
Area: 122 sq. ft
Counted as living area: Yes

Heated: Yes
Finished: Yes
Enclosed: Yes
Contiguous: Yes
Permitted: Yes
Wet space: No
Addition: No
Conversion: No

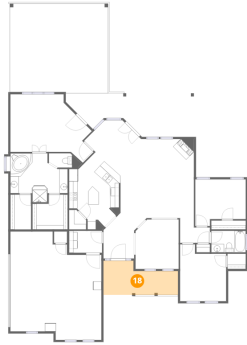
17 Floor 1 - Bath



Dimensions: 8'3" x 5'2"
Area: 42 sq. ft
Counted as living area: Yes

Heated: Yes
Finished: Yes
Enclosed: Yes
Contiguous: Yes
Permitted: Yes
Wet space: Yes
Addition: No
Conversion: No

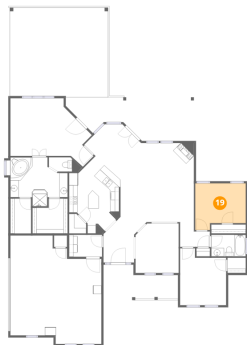
18 Floor 1 - Porch



Dimensions: 17'10" x 8'2"
Area: 146 sq. ft
Counted as living area: No

Heated: No
Finished: No
Enclosed: No
Contiguous: Yes
Permitted: Yes
Wet space: No
Addition: No
Conversion: No

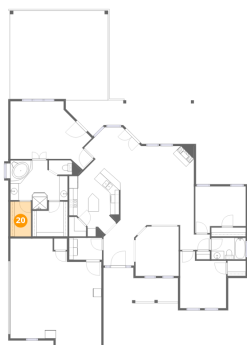
19 Floor 1 - Bedroom



Dimensions: 12'1" x 11'2"
Area: 135 sq. ft
Counted as living area: Yes

Heated: Yes
Finished: Yes
Enclosed: Yes
Contiguous: Yes
Permitted: Yes
Wet space: No
Addition: No
Conversion: No

20 Floor 1 - W.I.C.



Dimensions: 4'11" x 8'4"
Area: 41 sq. ft
Counted as living area: Yes

Heated: Yes
Finished: Yes
Enclosed: Yes
Contiguous: Yes
Permitted: Yes
Wet space: No
Addition: No
Conversion: No

21 Floor 1 - Pantry



Dimensions: 4'1" x 4'8"
Area: 19 sq. ft
Counted as living area: Yes

Heated: Yes
Finished: Yes
Enclosed: Yes
Contiguous: Yes
Permitted: Yes
Wet space: No
Addition: No
Conversion: No