

Home data report

409 Wills Road, Lexington, Lexington city, Virginia, United States, 24450



**Total Area: 2123 sq. ft**

Basement 1: 790 sq. ft, 1st Floor: 859 sq. ft, 2nd Floor: 474 sq. ft

Excluded: Utility 32 sq. ft, Porch 28 sq. ft, Deck 157 sq. ft, Walls: 166 sq. ft

Property summary

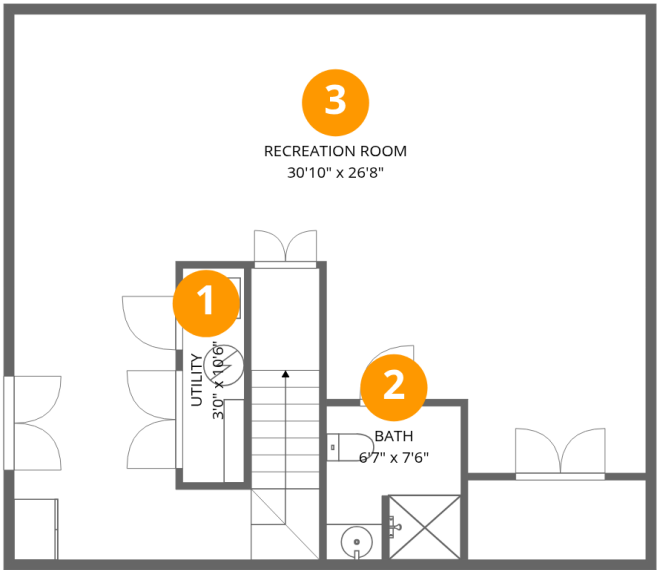
 **3** Floors

 **3** Bedrooms

 **3** Bathrooms

Home data report

409 Wills Road, Lexington, Lexington city, Virginia, United States, 24450

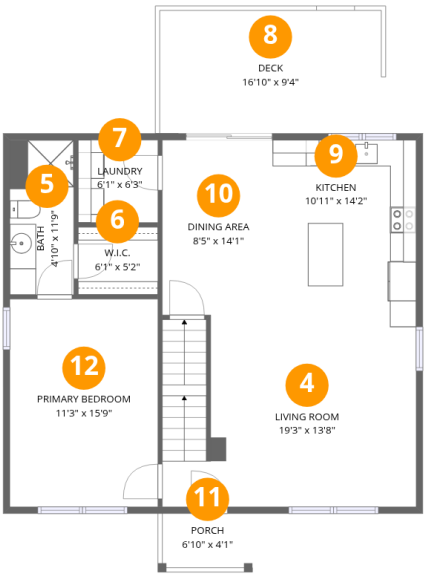


Room dimensions

Floor 1 Below grade Total:790sqft   Excluded: 32sqft

#		Dimensions	sqft	Counted as living area
1	Utility	3'0" x 10'6"	32 sq. ft	No
2	Bath	6'7" x 7'6"	49 sq. ft	Yes
3	Recreation Room	30'10" x 26'8"	822 sq. ft	Yes

409 Wills Road, Lexington, Lexington city, Virginia, United States, 24450



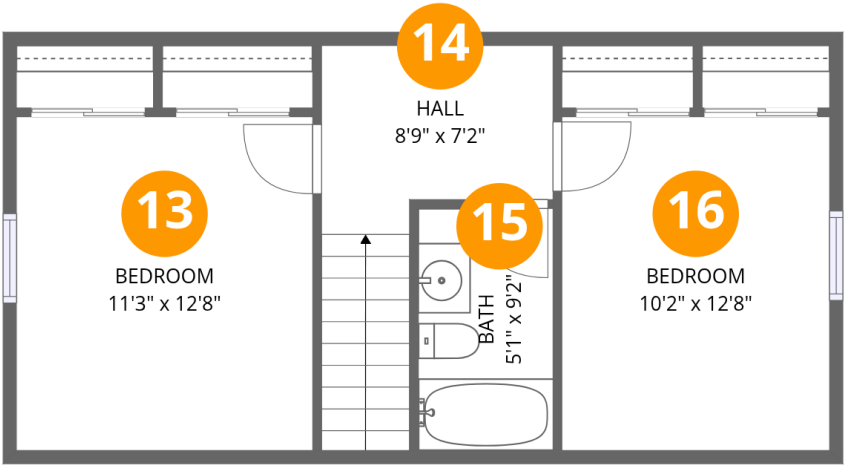
Room dimensions

Floor 2 Total:859sqft    Excluded: 185sqft

#		Dimensions	sqft	Counted as living area
4	Living Room	19'3" x 13'8"	264 sq. ft	Yes
5	Bath	4'10" x 11'9"	57 sq. ft	Yes
6	W.I.C.	6'1" x 5'2"	31 sq. ft	Yes
7	Laundry	6'1" x 6'3"	38 sq. ft	Yes
8	Deck	16'10" x 9'4"	157 sq. ft	No
9	Kitchen	10'11" x 14'2"	154 sq. ft	Yes
10	Dining Area	8'5" x 14'1"	119 sq. ft	Yes
11	Porch	6'10" x 4'1"	28 sq. ft	No
12	Primary Bedroom	11'3" x 15'9"	177 sq. ft	Yes

Home data report

409 Wills Road, Lexington, Lexington city, Virginia, United States, 24450

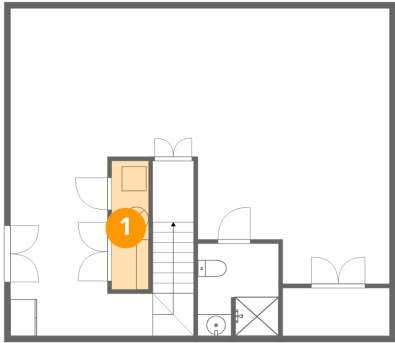


Room dimensions

Floor 3 Total:474sqft Excluded: 0sqft

#		Dimensions	sqft	Counted as living area
13	Bedroom	11'3" x 12'8"	142 sq. ft	Yes
14	Hall	8'9" x 7'2"	63 sq. ft	Yes
15	Bath	5'1" x 9'2"	47 sq. ft	Yes
16	Bedroom	10'2" x 12'8"	129 sq. ft	Yes

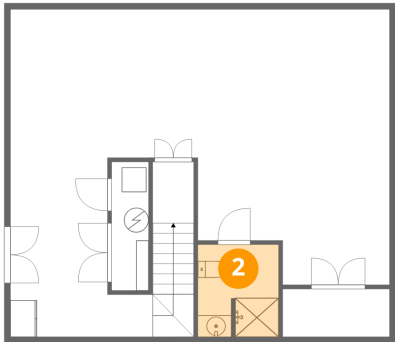
1 Floor 1 - Utility



Dimensions: 3'0" x 10'6"  
Area: 32 sq. ft  
Counted as living area: No

Heated: Yes  
Finished: No  
Enclosed: Yes  
Contiguous: Yes  
Permitted: Yes  
Wet space: No  
Addition: No  
Conversion: No

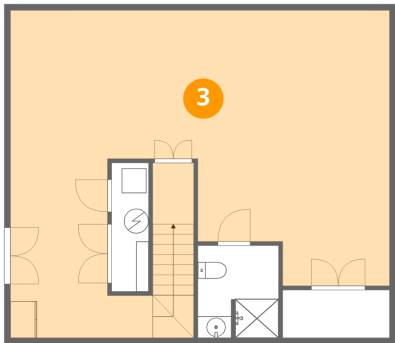
2 Floor 1 - Bath



Dimensions: 6'7" x 7'6"  
Area: 49 sq. ft  
Counted as living area: Yes

Heated: Yes  
Finished: Yes  
Enclosed: Yes  
Contiguous: Yes  
Permitted: Yes  
Wet space: Yes  
Addition: No  
Conversion: No

3 Floor 1 - Recreation Room



Dimensions: 30'10" x 26'8"  
Area: 822 sq. ft  
Counted as living area: Yes

Heated: Yes  
Finished: Yes  
Enclosed: Yes  
Contiguous: Yes  
Permitted: Yes  
Wet space: No  
Addition: No  
Conversion: No

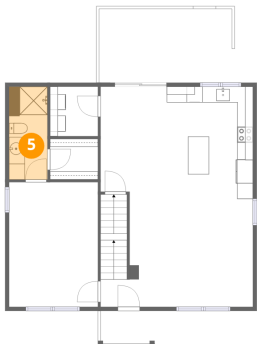
4 Floor 2 - Living Room



Dimensions: 19'3" x 13'8"  
Area: 264 sq. ft  
Counted as living area: Yes

Heated: Yes  
Finished: Yes  
Enclosed: Yes  
Contiguous: Yes  
Permitted: Yes  
Wet space: No  
Addition: No  
Conversion: No

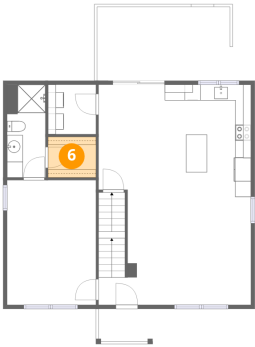
5 Floor 2 - Bath



Dimensions: 4'10" x 11'9"  
Area: 57 sq. ft  
Counted as living area: Yes

Heated: Yes  
Finished: Yes  
Enclosed: Yes  
Contiguous: Yes  
Permitted: Yes  
Wet space: Yes  
Addition: No  
Conversion: No

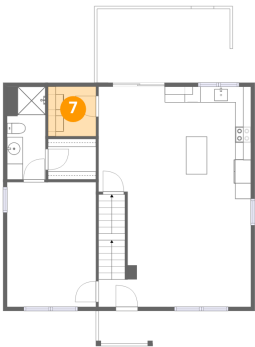
6 Floor 2 - W.I.C.



Dimensions: 6'1" x 5'2"  
Area: 31 sq. ft  
Counted as living area: Yes

Heated: Yes  
Finished: Yes  
Enclosed: Yes  
Contiguous: Yes  
Permitted: Yes  
Wet space: No  
Addition: No  
Conversion: No

7 Floor 2 - Laundry



Dimensions: 6'1" x 6'3"  
Area: 38 sq. ft  
Counted as living area: Yes

Heated: Yes  
Finished: Yes  
Enclosed: Yes  
Contiguous: Yes  
Permitted: Yes  
Wet space: No  
Addition: No  
Conversion: No

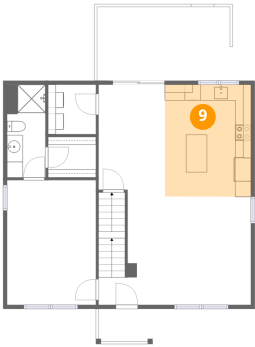
8 Floor 2 - Deck



Dimensions: 16'10" x 9'4"  
Area: 157 sq. ft  
Counted as living area: No

Heated: No  
Finished: No  
Enclosed: No  
Contiguous: Yes  
Permitted: Yes  
Wet space: No  
Addition: No  
Conversion: No

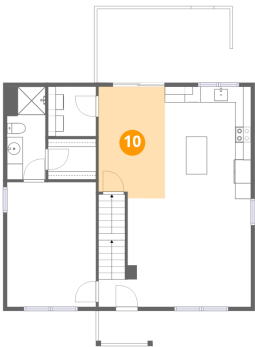
9 Floor 2 - Kitchen



Dimensions: 10'11" x 14'2"  
Area: 154 sq. ft  
Counted as living area: Yes

Heated: Yes  
Finished: Yes  
Enclosed: Yes  
Contiguous: Yes  
Permitted: Yes  
Wet space: No  
Addition: No  
Conversion: No

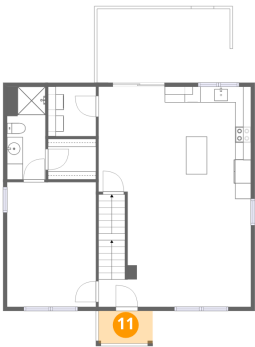
10 Floor 2 - Dining Area



Dimensions: 8'5" x 14'1"  
Area: 119 sq. ft  
Counted as living area: Yes

Heated: Yes  
Finished: Yes  
Enclosed: Yes  
Contiguous: Yes  
Permitted: Yes  
Wet space: No  
Addition: No  
Conversion: No

11 Floor 2 - Porch



Dimensions: 6'10" x 4'1"  
Area: 28 sq. ft  
Counted as living area: No

Heated: No  
Finished: No  
Enclosed: No  
Contiguous: Yes  
Permitted: Yes  
Wet space: No  
Addition: No  
Conversion: No



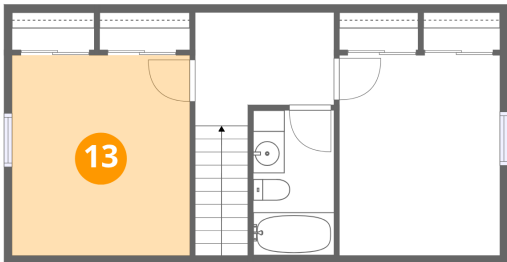
12 Floor 2 - Primary Bedroom



Dimensions: 11'3" x 15'9"  
Area: 177 sq. ft  
Counted as living area: Yes

Heated: Yes  
Finished: Yes  
Enclosed: Yes  
Contiguous: Yes  
Permitted: Yes  
Wet space: No  
Addition: No  
Conversion: No

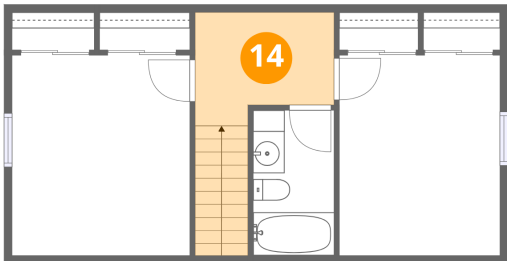
13 Floor 3 - Bedroom



Dimensions: 11'3" x 12'8"  
Area: 142 sq. ft  
Counted as living area: Yes

Heated: Yes  
Finished: Yes  
Enclosed: Yes  
Contiguous: Yes  
Permitted: Yes  
Wet space: No  
Addition: No  
Conversion: No

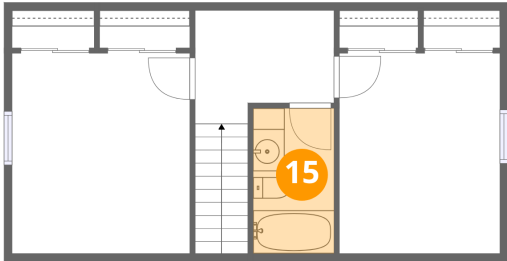
14 Floor 3 - Hall



Dimensions: 8'9" x 7'2"  
Area: 63 sq. ft  
Counted as living area: Yes

Heated: Yes  
Finished: Yes  
Enclosed: Yes  
Contiguous: Yes  
Permitted: Yes  
Wet space: No  
Addition: No  
Conversion: No

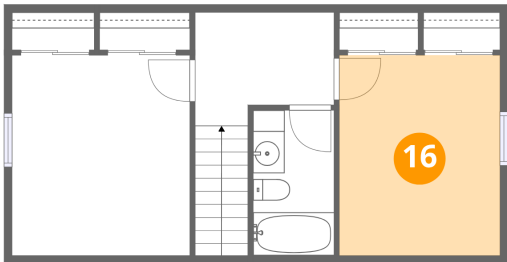
15 Floor 3 - Bath



Dimensions: 5'1" x 9'2"  
Area: 47 sq. ft  
Counted as living area: Yes

Heated: Yes  
Finished: Yes  
Enclosed: Yes  
Contiguous: Yes  
Permitted: Yes  
Wet space: Yes  
Addition: No  
Conversion: No

16 Floor 3 - Bedroom



Dimensions: 10'2" x 12'8"  
Area: 129 sq. ft  
Counted as living area: Yes

Heated: Yes  
Finished: Yes  
Enclosed: Yes  
Contiguous: Yes  
Permitted: Yes  
Wet space: No  
Addition: No  
Conversion: No