

Home data report

125 Hunters Rest Ln, Piperton, TN, US



Total Area: 3999 sq. ft

1st Floor: 2815 sq. ft, 2nd Floor: 1184 sq. ft

Excluded: Screened porch 366 sq. ft, Walls: 245 sq. ft

Property summary

 **2** Floors

 **6** Bedrooms

 **3** Bathrooms

 **1** Half baths

125 Hunters Rest Ln, Piperton, TN, US



Room dimensions

Floor 1

Total:2815sqft Excluded: 366sqft

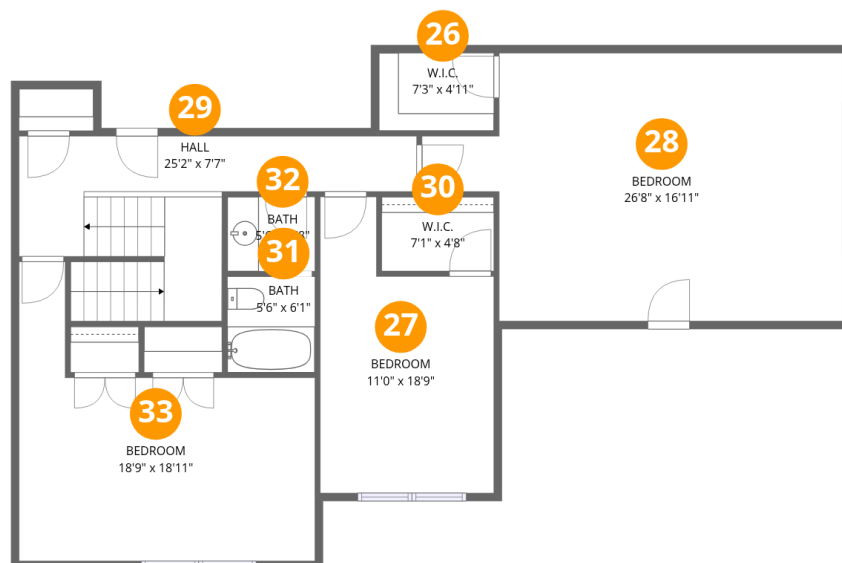
#		Dimensions	sqft	Counted as living area
1	Bath	5'9" x 6'2"	35 sq. ft	Yes
2	Primary Bath	17'5" x 12'2"	212 sq. ft	Yes
3	Primary Bedroom	15'3" x 18'0"	276 sq. ft	Yes
4	W.I.C.	8'4" x 5'6"	46 sq. ft	Yes
5	Pantry	4'3" x 6'0"	26 sq. ft	Yes
6	Laundry	10'11" x 7'6"	83 sq. ft	Yes
7	Bedroom	13'10" x 11'8"	162 sq. ft	Yes
8	Hall	4'0" x 10'2"	40 sq. ft	Yes
9	W.I.C.	8'10" x 5'6"	49 sq. ft	Yes
10	Kitchen	14'6" x 18'1"	261 sq. ft	Yes
11	Dining Room	14'2" x 14'9"	209 sq. ft	Yes

Home data report

125 Hunters Rest Ln,Piperton,TN,US

#		Dimensions	sqft	Counted as living area
12	Bath	5'2" x 4'7"	24 sq. ft	Yes
13	Bath	3'10" x 5'5"	21 sq. ft	Yes
14	Hall	11'0" x 20'1"	221 sq. ft	Yes
15	Bedroom	13'11" x 12'7"	175 sq. ft	Yes
16	Screened Porch	21'8" x 17'0"	369 sq. ft	No
17	W.I.C.	3'10" x 6'1"	24 sq. ft	Yes
18	Hall	5'6" x 7'10"	44 sq. ft	Yes
19	Living Room	21'3" x 18'11"	403 sq. ft	Yes
20	Breakfast Nook	14'6" x 9'3"	133 sq. ft	Yes
21	Foyer	7'0" x 25'11"	182 sq. ft	Yes
22	Bath	7'1" x 5'1"	36 sq. ft	Yes
23	Bath	7'9" x 6'1"	47 sq. ft	Yes
24	W.I.C.	4'0" x 5'2"	20 sq. ft	Yes
25	Room	7'1" x 5'6"	39 sq. ft	Yes

125 Hunters Rest Ln, Piperton, TN, US



Room dimensions

Floor 2

Total: 1184 sqft Excluded: 0 sqft

#		Dimensions	sqft	Counted as living area
26	W.I.C.	7'3" x 4'11"	35 sq. ft	Yes
27	Bedroom	11'0" x 18'9"	206 sq. ft	Yes
28	Bedroom	26'8" x 16'11"	450 sq. ft	Yes
29	Hall	25'2" x 7'7"	191 sq. ft	Yes
30	W.I.C.	7'1" x 4'8"	33 sq. ft	Yes
31	Bath	5'6" x 6'1"	34 sq. ft	Yes
32	Bath	5'6" x 4'8"	26 sq. ft	Yes
33	Bedroom	18'9" x 18'11"	354 sq. ft	Yes

1 Floor 1 - Bath



Dimensions: 5'9" x 6'2"
Area: 35 sq. ft
Counted as living area: Yes

Heated: Yes
Finished: Yes
Enclosed: Yes
Contiguous: Yes
Permitted: Yes
Wet space: Yes
Addition: No
Conversion: No

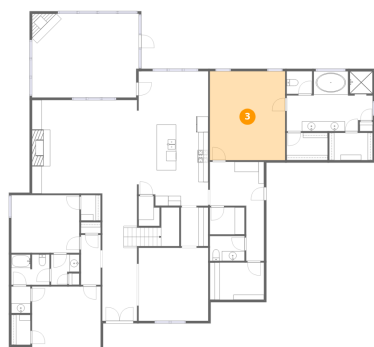
2 Floor 1 - Primary Bath



Dimensions: 17'5" x 12'2"
Area: 212 sq. ft
Counted as living area: Yes

Heated: Yes
Finished: Yes
Enclosed: Yes
Contiguous: Yes
Permitted: Yes
Wet space: Yes
Addition: No
Conversion: No

3 Floor 1 - Primary Bedroom



Dimensions: 15'3" x 18'0"
Area: 276 sq. ft
Counted as living area: Yes

Heated: Yes
Finished: Yes
Enclosed: Yes
Contiguous: Yes
Permitted: Yes
Wet space: No
Addition: No
Conversion: No

4 Floor 1 - W.I.C.



Dimensions: 8'4" x 5'6"
Area: 46 sq. ft
Counted as living area: Yes

Heated: Yes
Finished: Yes
Enclosed: Yes
Contiguous: Yes
Permitted: Yes
Wet space: No
Addition: No
Conversion: No

5 Floor 1 - Pantry



Dimensions: 4'3" x 6'0"
Area: 26 sq. ft
Counted as living area: Yes

Heated: Yes
Finished: Yes
Enclosed: Yes
Contiguous: Yes
Permitted: Yes
Wet space: No
Addition: No
Conversion: No

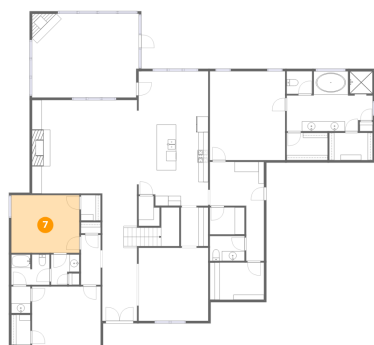
6 Floor 1 - Laundry



Dimensions: 10'11" x 7'6"
Area: 83 sq. ft
Counted as living area: Yes

Heated: Yes
Finished: Yes
Enclosed: Yes
Contiguous: Yes
Permitted: Yes
Wet space: No
Addition: No
Conversion: No

7 Floor 1 - Bedroom



Dimensions: 13'10" x 11'8"
Area: 162 sq. ft
Counted as living area: Yes

Heated: Yes
Finished: Yes
Enclosed: Yes
Contiguous: Yes
Permitted: Yes
Wet space: No
Addition: No
Conversion: No

8 Floor 1 - Hall



Dimensions: 4'0" x 10'2"
Area: 40 sq. ft
Counted as living area: Yes

Heated: Yes
Finished: Yes
Enclosed: Yes
Contiguous: Yes
Permitted: Yes
Wet space: No
Addition: No
Conversion: No

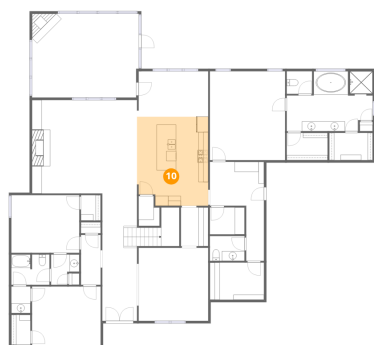
9 Floor 1 - W.I.C.



Dimensions: 8'10" x 5'6"
Area: 49 sq. ft
Counted as living area: Yes

Heated: Yes
Finished: Yes
Enclosed: Yes
Contiguous: Yes
Permitted: Yes
Wet space: No
Addition: No
Conversion: No

10 Floor 1 - Kitchen



Dimensions: 14'6" x 18'1"
Area: 261 sq. ft
Counted as living area: Yes

Heated: Yes
Finished: Yes
Enclosed: Yes
Contiguous: Yes
Permitted: Yes
Wet space: No
Addition: No
Conversion: No

11 Floor 1 - Dining Room



Dimensions: 14'2" x 14'9"
Area: 209 sq. ft
Counted as living area: Yes

Heated: Yes
Finished: Yes
Enclosed: Yes
Contiguous: Yes
Permitted: Yes
Wet space: No
Addition: No
Conversion: No

12 Floor 1 - Bath



Dimensions: 5'2" x 4'7"
Area: 24 sq. ft
Counted as living area: Yes

Heated: Yes
Finished: Yes
Enclosed: Yes
Contiguous: Yes
Permitted: Yes
Wet space: Yes
Addition: No
Conversion: No

13 Floor 1 - Bath



Dimensions: 3'10" x 5'5"
Area: 21 sq. ft
Counted as living area: Yes

Heated: Yes
Finished: Yes
Enclosed: Yes
Contiguous: Yes
Permitted: Yes
Wet space: Yes
Addition: No
Conversion: No

14 Floor 1 - Hall



Dimensions: 11'0" x 20'1"
Area: 221 sq. ft
Counted as living area: Yes

Heated: Yes
Finished: Yes
Enclosed: Yes
Contiguous: Yes
Permitted: Yes
Wet space: No
Addition: No
Conversion: No

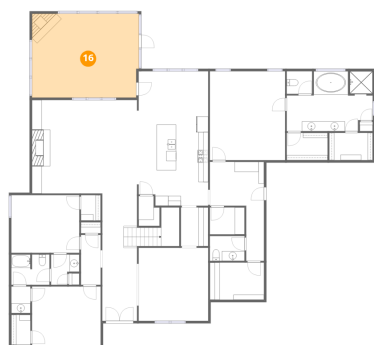
15 Floor 1 - Bedroom



Dimensions: 13'11" x 12'7"
Area: 175 sq. ft
Counted as living area: Yes

Heated: Yes
Finished: Yes
Enclosed: Yes
Contiguous: Yes
Permitted: Yes
Wet space: No
Addition: No
Conversion: No

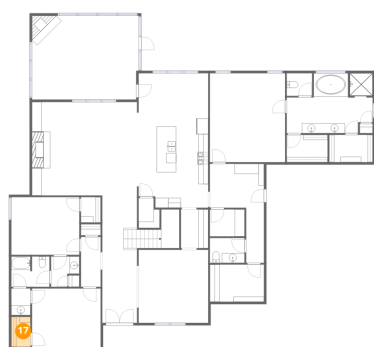
16 Floor 1 - Screened Porch



Dimensions: 21'8" x 17'0"
Area: 369 sq. ft
Counted as living area: No

Heated: No
Finished: No
Enclosed: No
Contiguous: Yes
Permitted: Yes
Wet space: No
Addition: No
Conversion: No

17 Floor 1 - W.I.C.



Dimensions: 3'10" x 6'1"
Area: 24 sq. ft
Counted as living area: Yes

Heated: Yes
Finished: Yes
Enclosed: Yes
Contiguous: Yes
Permitted: Yes
Wet space: No
Addition: No
Conversion: No

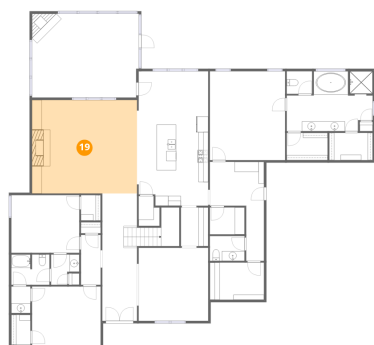
18 Floor 1 - Hall



Dimensions: 5'6" x 7'10"
Area: 44 sq. ft
Counted as living area: Yes

Heated: Yes
Finished: Yes
Enclosed: Yes
Contiguous: Yes
Permitted: Yes
Wet space: No
Addition: No
Conversion: No

19 Floor 1 - Living Room



Dimensions: 21'3" x 18'11"
Area: 403 sq. ft
Counted as living area: Yes

Heated: Yes
Finished: Yes
Enclosed: Yes
Contiguous: Yes
Permitted: Yes
Wet space: No
Addition: No
Conversion: No

20 Floor 1 - Breakfast Nook



Dimensions: 14'6" x 9'3"
Area: 133 sq. ft
Counted as living area: Yes

Heated: Yes
Finished: Yes
Enclosed: Yes
Contiguous: Yes
Permitted: Yes
Wet space: No
Addition: No
Conversion: No

21 Floor 1 - Foyer



Dimensions: 7'0" x 25'11"
Area: 182 sq. ft
Counted as living area: Yes

Heated: Yes
Finished: Yes
Enclosed: Yes
Contiguous: Yes
Permitted: Yes
Wet space: No
Addition: No
Conversion: No

22 Floor 1 - Bath



Dimensions: 7'1" x 5'1"
Area: 36 sq. ft
Counted as living area: Yes

Heated: Yes
Finished: Yes
Enclosed: Yes
Contiguous: Yes
Permitted: Yes
Wet space: Yes
Addition: No
Conversion: No

23 Floor 1 - Bath



Dimensions: 7'9" x 6'1"
Area: 47 sq. ft
Counted as living area: Yes

Heated: Yes
Finished: Yes
Enclosed: Yes
Contiguous: Yes
Permitted: Yes
Wet space: Yes
Addition: No
Conversion: No

24 Floor 1 - W.I.C.



Dimensions: 4'0" x 5'2"
Area: 20 sq. ft
Counted as living area: Yes

Heated: Yes
Finished: Yes
Enclosed: Yes
Contiguous: Yes
Permitted: Yes
Wet space: No
Addition: No
Conversion: No

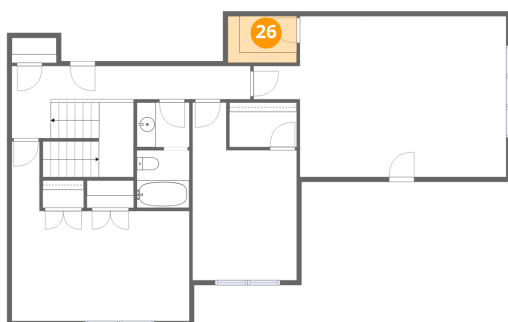
25 Floor 1 - Room



Dimensions: 7'1" x 5'6"
Area: 39 sq. ft
Counted as living area: Yes

Heated: Yes
Finished: Yes
Enclosed: Yes
Contiguous: Yes
Permitted: Yes
Wet space: No
Addition: No
Conversion: No

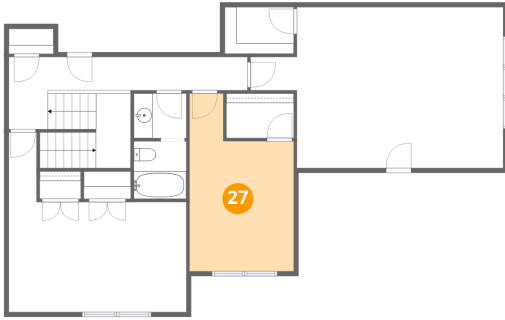
26 Floor 2 - W.I.C.



Dimensions: 7'3" x 4'11"
Area: 35 sq. ft
Counted as living area: Yes

Heated: Yes
Finished: Yes
Enclosed: Yes
Contiguous: Yes
Permitted: Yes
Wet space: No
Addition: No
Conversion: No

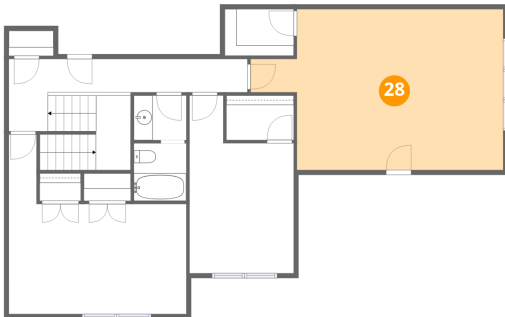
27 Floor 2 - Bedroom



Dimensions: 11'0" x 18'9"
Area: 206 sq. ft
Counted as living area: Yes

Heated: Yes
Finished: Yes
Enclosed: Yes
Contiguous: Yes
Permitted: Yes
Wet space: No
Addition: No
Conversion: No

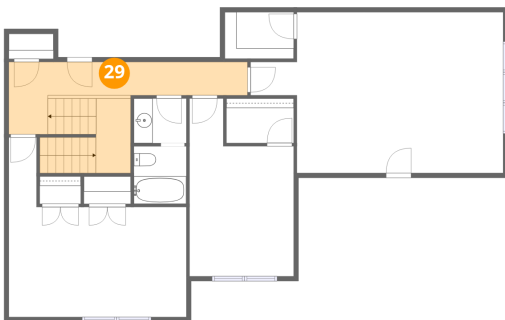
28 Floor 2 - Bedroom



Dimensions: 26'8" x 16'11"
Area: 450 sq. ft
Counted as living area: Yes

Heated: Yes
Finished: Yes
Enclosed: Yes
Contiguous: Yes
Permitted: Yes
Wet space: No
Addition: No
Conversion: No

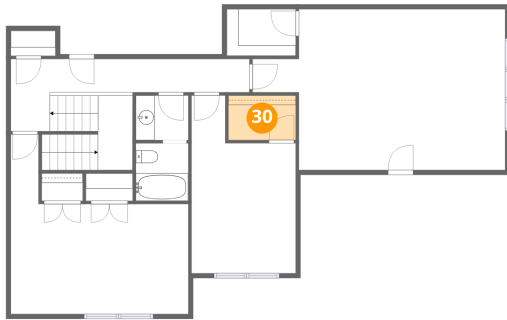
29 Floor 2 - Hall



Dimensions: 25'2" x 7'7"
Area: 191 sq. ft
Counted as living area: Yes

Heated: Yes
Finished: Yes
Enclosed: Yes
Contiguous: Yes
Permitted: Yes
Wet space: No
Addition: No
Conversion: No

30 Floor 2 - W.I.C.



Dimensions: 7'1" x 4'8"
Area: 33 sq. ft
Counted as living area: Yes

Heated: Yes
Finished: Yes
Enclosed: Yes
Contiguous: Yes
Permitted: Yes
Wet space: No
Addition: No
Conversion: No

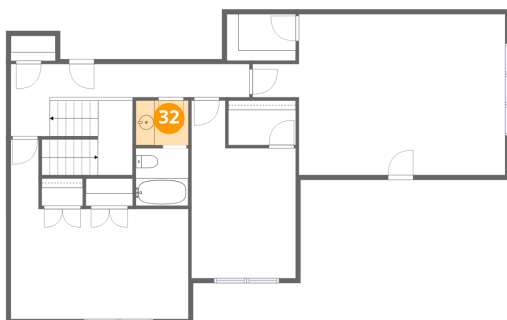
31 Floor 2 - Bath



Dimensions: 5'6" x 6'1"
Area: 34 sq. ft
Counted as living area: Yes

Heated: Yes
Finished: Yes
Enclosed: Yes
Contiguous: Yes
Permitted: Yes
Wet space: Yes
Addition: No
Conversion: No

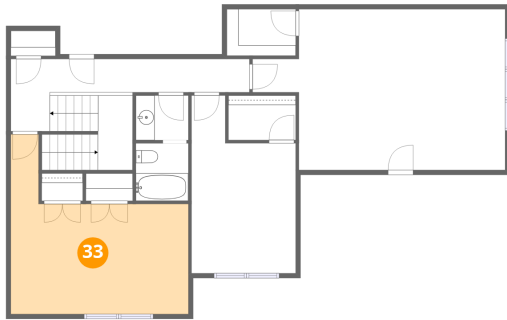
32 Floor 2 - Bath



Dimensions: 5'6" x 4'8"
Area: 26 sq. ft
Counted as living area: Yes

Heated: Yes
Finished: Yes
Enclosed: Yes
Contiguous: Yes
Permitted: Yes
Wet space: Yes
Addition: No
Conversion: No

33 Floor 2 - Bedroom



Dimensions: 18'9" x 18'11"
Area: 354 sq. ft
Counted as living area: Yes

Heated: Yes
Finished: Yes
Enclosed: Yes
Contiguous: Yes
Permitted: Yes
Wet space: No
Addition: No
Conversion: No