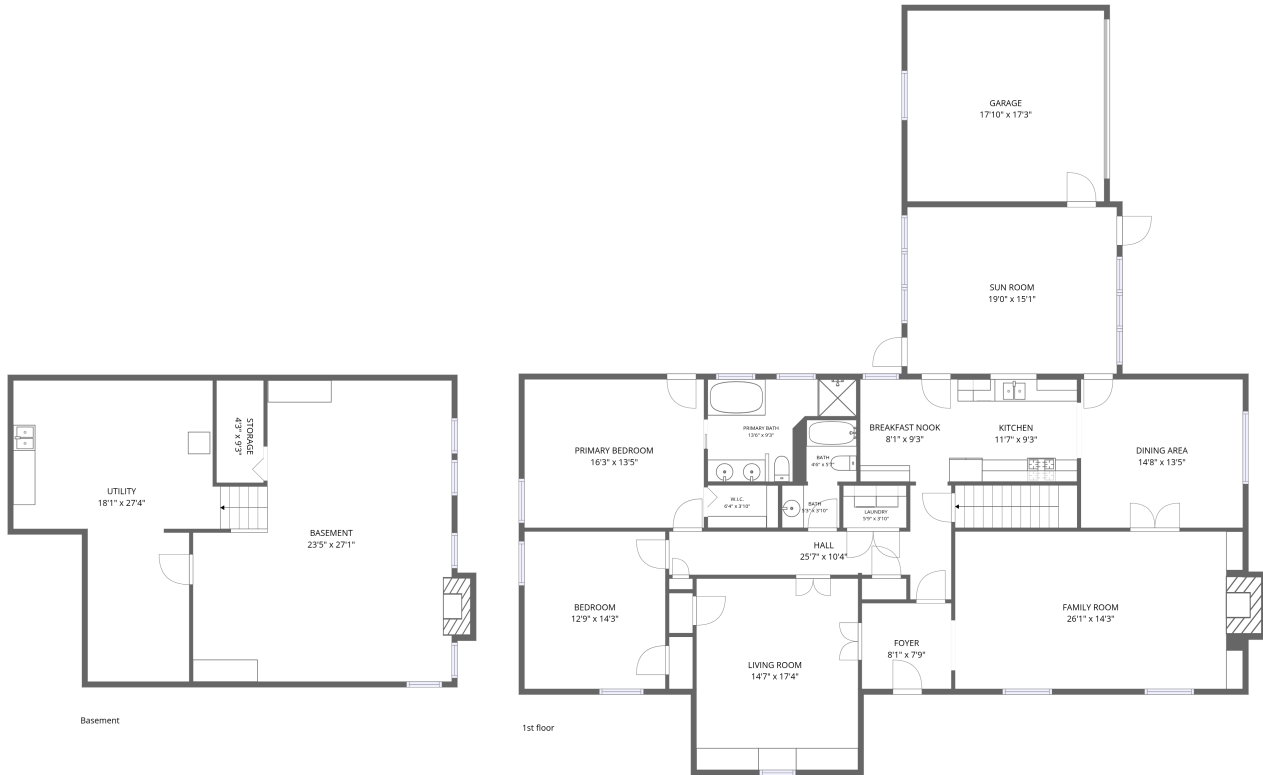


Home data report

6353 Limewood Circle, Louisville, Kentucky 40222, United States



Total Area: 2357 sq. ft

Basement: 612 sq. ft, 1st Floor: 2357 sq. ft

Excluded: Storage 45 sq. ft, Utility 402 sq. ft, Fireplace 10 sq. ft, Garage 336 sq. ft

Property summary



2
Floors



2
Bedrooms

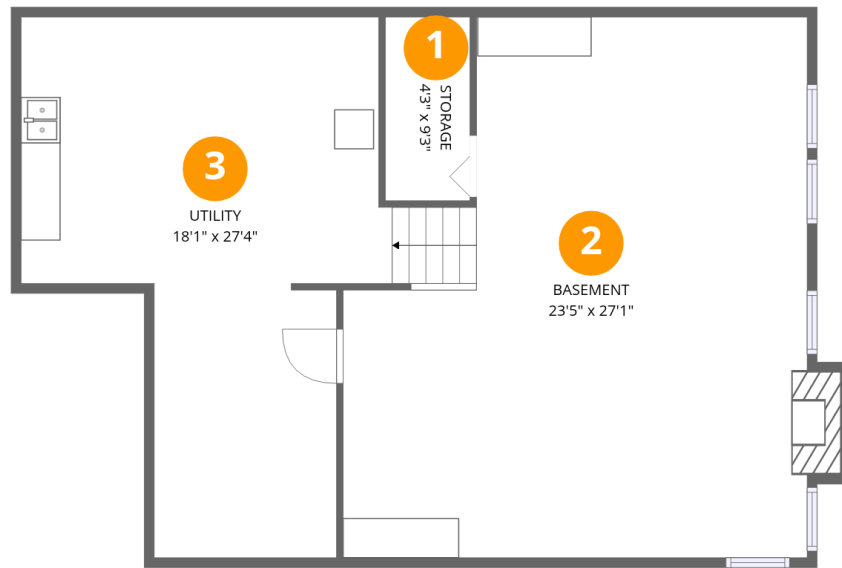


2
Bathrooms



1
Garages

6353 Limewood Circle, Louisville, Kentucky 40222, United States



Room dimensions

Floor 1 Below grade

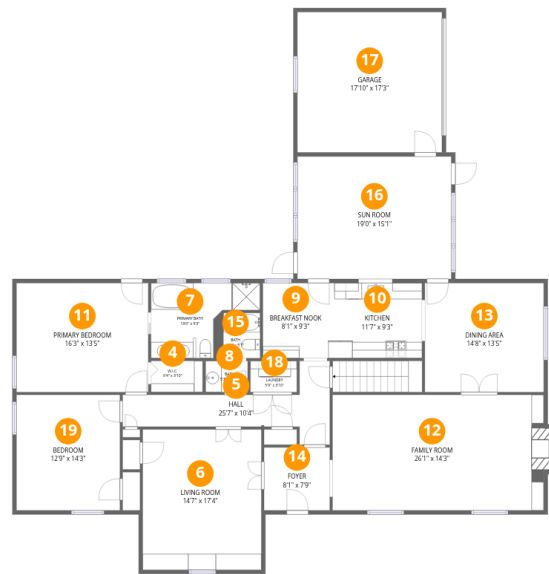
Total:612sqft

Excluded: 457sqft

#		Dimensions	sqft	Counted as living area
1	Storage	4'3" x 9'3"	40 sq. ft	No
2	Basement	23'5" x 27'1"	634 sq. ft	Yes
3	Utility	18'1" x 27'4"	493 sq. ft	No

Home data report

6353 Limewood Circle, Louisville, Kentucky 40222, United States



Room dimensions

Floor 2

Total:2357sqft

Excluded: 336sqft

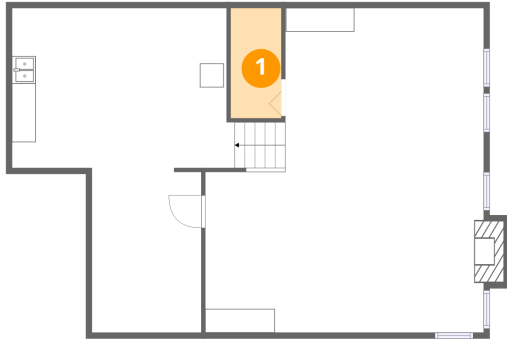
#		Dimensions	sqft	Counted as living area
4	W.I.C.	6'4" x 3'10"	24 sq. ft	Yes
5	Hall	25'7" x 10'4"	264 sq. ft	Yes
6	Living Room	14'7" x 17'4"	253 sq. ft	Yes
7	Primary Bath	13'6" x 9'3"	125 sq. ft	Yes
8	Bath	5'3" x 3'10"	20 sq. ft	Yes
9	Breakfast Nook	8'1" x 9'3"	75 sq. ft	Yes
10	Kitchen	11'7" x 9'3"	107 sq. ft	Yes
11	Primary Bedroom	16'3" x 13'5"	218 sq. ft	Yes
12	Family Room	26'1" x 14'3"	372 sq. ft	Yes
13	Dining Area	14'8" x 13'5"	197 sq. ft	Yes
14	Foyer	8'1" x 7'9"	63 sq. ft	Yes

Home data report

6353 Limewood Circle, Louisville, Kentucky 40222, United States

#		Dimensions	sqft	Counted as living area
15	Bath	4'6" x 5'7"	25 sq. ft	Yes
16	Sun Room	19'0" x 15'1"	287 sq. ft	Yes
17	Garage	17'10" x 17'3"	308 sq. ft	No
18	Laundry	5'9" x 3'10"	22 sq. ft	Yes
19	Bedroom	12'9" x 14'3"	181 sq. ft	Yes

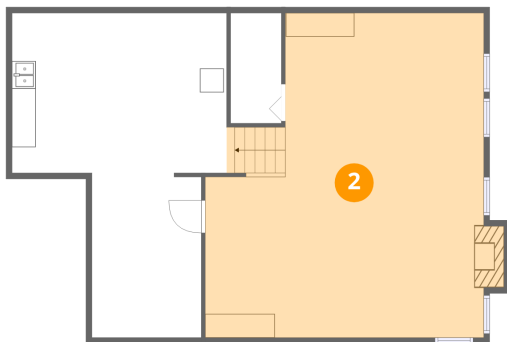
1 Floor 1 - Storage



Dimensions: 4'3" x 9'3"
Area: 40 sq. ft
Counted as living area: No

Heated: No
Finished: No
Enclosed: No
Contiguous: Yes
Permitted: Yes
Wet space: No
Addition: No
Conversion: No

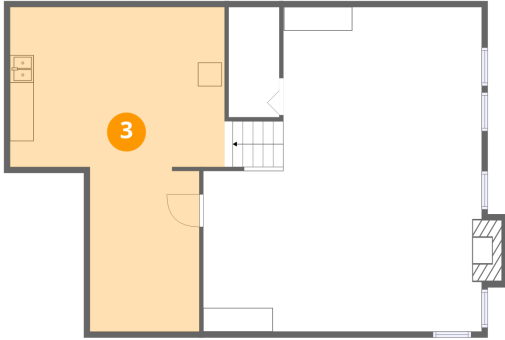
2 Floor 1 - Basement



Dimensions: 23'5" x 27'1"
Area: 634 sq. ft
Counted as living area: Yes

Heated: Yes
Finished: Yes
Enclosed: Yes
Contiguous: Yes
Permitted: Yes
Wet space: No
Addition: No
Conversion: No

3 Floor 1 - Utility



Dimensions: 18'1" x 27'4"
Area: 493 sq. ft
Counted as living area: No

Heated: Yes
Finished: No
Enclosed: Yes
Contiguous: Yes
Permitted: Yes
Wet space: No
Addition: No
Conversion: No

4 Floor 2 - W.I.C.



Dimensions: 6'4" x 3'10"
Area: 24 sq. ft
Counted as living area: Yes

Heated: Yes
Finished: Yes
Enclosed: Yes
Contiguous: Yes
Permitted: Yes
Wet space: No
Addition: No
Conversion: No

5 Floor 2 - Hall



Dimensions: 25'7" x 10'4"
Area: 264 sq. ft
Counted as living area: Yes

Heated: Yes
Finished: Yes
Enclosed: Yes
Contiguous: Yes
Permitted: Yes
Wet space: No
Addition: No
Conversion: No

6 Floor 2 - Living Room



Dimensions: 14'7" x 17'4"
Area: 253 sq. ft
Counted as living area: Yes

Heated: Yes
Finished: Yes
Enclosed: Yes
Contiguous: Yes
Permitted: Yes
Wet space: No
Addition: No
Conversion: No

7 Floor 2 - Primary Bath



Dimensions: 13'6" x 9'3"
Area: 125 sq. ft
Counted as living area: Yes

Heated: Yes
Finished: Yes
Enclosed: Yes
Contiguous: Yes
Permitted: Yes
Wet space: Yes
Addition: No
Conversion: No

8 Floor 2 - Bath



Dimensions: 5'3" x 3'10"
Area: 20 sq. ft
Counted as living area: Yes

Heated: Yes
Finished: Yes
Enclosed: Yes
Contiguous: Yes
Permitted: Yes
Wet space: Yes
Addition: No
Conversion: No

9 Floor 2 - Breakfast Nook



Dimensions: 8'1" x 9'3"
Area: 75 sq. ft
Counted as living area: Yes

Heated: Yes
Finished: Yes
Enclosed: Yes
Contiguous: Yes
Permitted: Yes
Wet space: No
Addition: No
Conversion: No

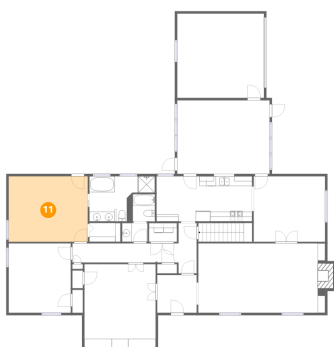
10 Floor 2 - Kitchen



Dimensions: 11'7" x 9'3"
Area: 107 sq. ft
Counted as living area: Yes

Heated: Yes
Finished: Yes
Enclosed: Yes
Contiguous: Yes
Permitted: Yes
Wet space: No
Addition: No
Conversion: No

11 Floor 2 - Primary Bedroom



Dimensions: 16'3" x 13'5"
Area: 218 sq. ft
Counted as living area: Yes

Heated: Yes
Finished: Yes
Enclosed: Yes
Contiguous: Yes
Permitted: Yes
Wet space: No
Addition: No
Conversion: No

12 Floor 2 - Family Room



Dimensions: 26'1" x 14'3"
Area: 372 sq. ft
Counted as living area: Yes

Heated: Yes
Finished: Yes
Enclosed: Yes
Contiguous: Yes
Permitted: Yes
Wet space: No
Addition: No
Conversion: No

13 Floor 2 - Dining Area



Dimensions: 14'8" x 13'5"
Area: 197 sq. ft
Counted as living area: Yes

Heated: Yes
Finished: Yes
Enclosed: Yes
Contiguous: Yes
Permitted: Yes
Wet space: No
Addition: No
Conversion: No

14 Floor 2 - Foyer



Dimensions: 8'1" x 7'9"
Area: 63 sq. ft
Counted as living area: Yes

Heated: Yes
Finished: Yes
Enclosed: Yes
Contiguous: Yes
Permitted: Yes
Wet space: No
Addition: No
Conversion: No

6353 Limewood Circle, Louisville, Kentucky 40222, United States

15 Floor 2 - Bath



Dimensions: 4'6" x 5'7"
Area: 25 sq. ft
Counted as living area: Yes

Heated: Yes
Finished: Yes
Enclosed: Yes
Contiguous: Yes
Permitted: Yes
Wet space: Yes
Addition: No
Conversion: No

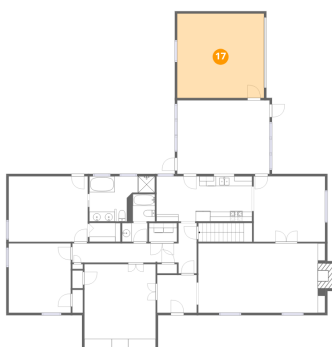
16 Floor 2 - Sun Room



Dimensions: 19'0" x 15'1"
Area: 287 sq. ft
Counted as living area: Yes

Heated: Yes
Finished: Yes
Enclosed: Yes
Contiguous: Yes
Permitted: Yes
Wet space: No
Addition: No
Conversion: No

17 Floor 2 - Garage



Dimensions: 17'10" x 17'3"
Area: 308 sq. ft
Counted as living area: No

Heated: No
Finished: No
Enclosed: Yes
Contiguous: Yes
Permitted: Yes
Wet space: No
Addition: No
Conversion: No

6353 Limewood Circle, Louisville, Kentucky 40222, United States

18 Floor 2 - Laundry



Dimensions: 5'9" x 3'10"
Area: 22 sq. ft
Counted as living area: Yes

Heated: Yes
Finished: Yes
Enclosed: Yes
Contiguous: Yes
Permitted: Yes
Wet space: No
Addition: No
Conversion: No

19 Floor 2 - Bedroom



Dimensions: 12'9" x 14'3"
Area: 181 sq. ft
Counted as living area: Yes

Heated: Yes
Finished: Yes
Enclosed: Yes
Contiguous: Yes
Permitted: Yes
Wet space: No
Addition: No
Conversion: No