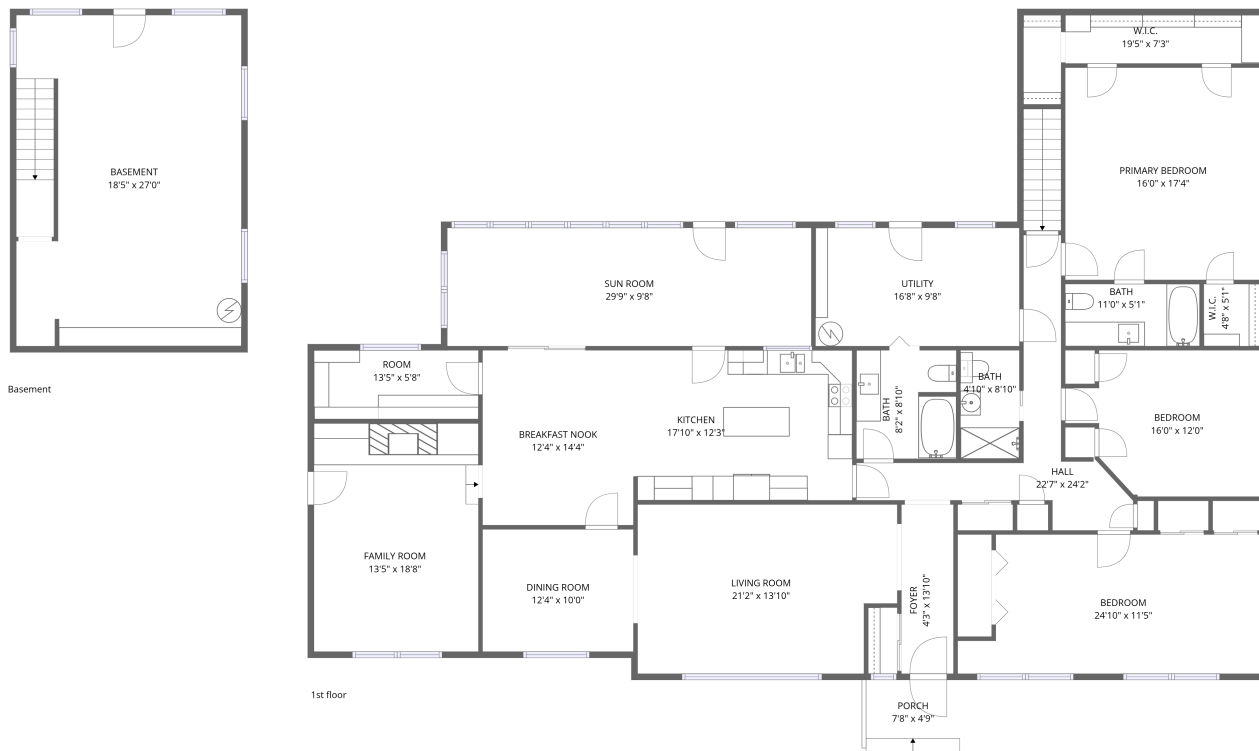


# Home data report

## 1606 Woodland Street Northwest, Cullman, Alabama 35055, United States



**Total Area: 3338 sq. ft**

Basement: 498 sq. ft, 1st Floor: 2840 sq. ft

Excluded: Porch 37 sq. ft, Utility 161 sq. ft, Walls: 178 sq. ft

### Property summary

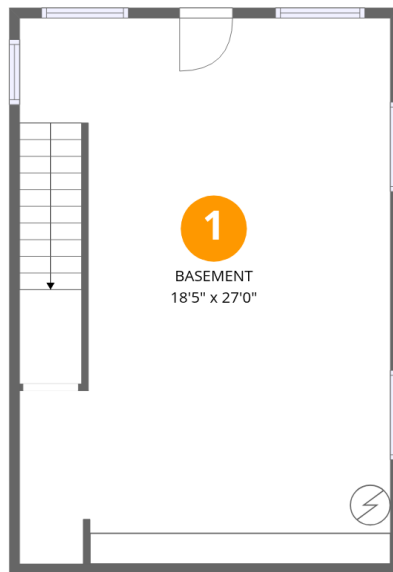
 **2** Floors

 **3** Bedrooms

 **3** Bathrooms

Home data report

**1606 Woodland Street Northwest, Cullman, Alabama 35055,  
United States**



## Room dimensions

Floor 1 Below grade

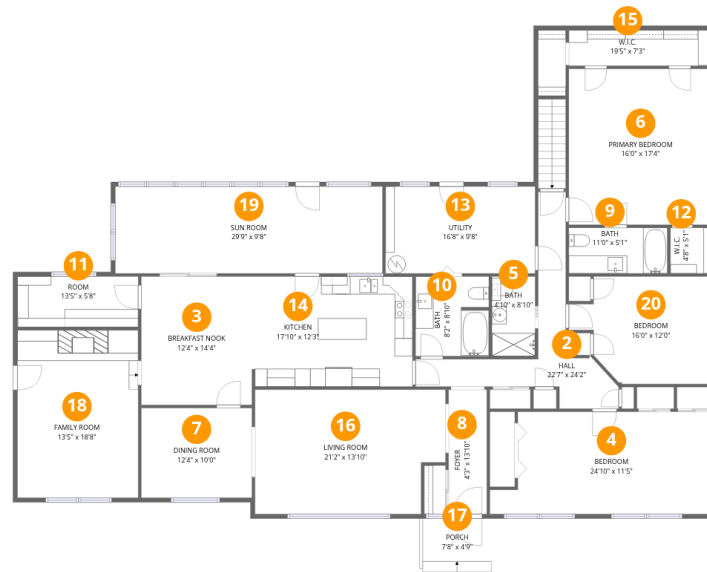
Total:498sqft

Excluded: 0sqft

#		Dimensions	sqft	Counted as living area
1	Basement	18'5" x 27'0"	497 sq. ft	Yes

Home data report

1606 Woodland Street Northwest, Cullman, Alabama 35055, United States



Room dimensions

Floor 2

Total:2840sqft

Excluded: 198sqft

#		Dimensions	sqft	Counted as living area
2	Hall	22'7" x 24'2"	545 sq. ft	Yes
3	Breakfast Nook	12'4" x 14'4"	176 sq. ft	Yes
4	Bedroom	24'10" x 11'5"	282 sq. ft	Yes
5	Bath	4'10" x 8'10"	43 sq. ft	Yes
6	Primary Bedroom	16'0" x 17'4"	277 sq. ft	Yes
7	Dining Room	12'4" x 10'0"	123 sq. ft	Yes
8	Foyer	4'3" x 13'10"	59 sq. ft	Yes
9	Bath	11'0" x 5'1"	56 sq. ft	Yes
10	Bath	8'2" x 8'10"	72 sq. ft	Yes
11	Room	13'5" x 5'8"	76 sq. ft	Yes
12	W.I.C.	4'8" x 5'1"	24 sq. ft	Yes

Home data report

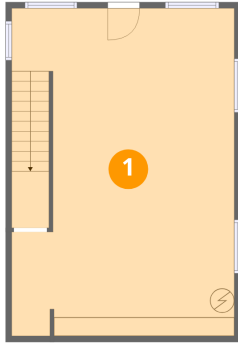
**1606 Woodland Street Northwest, Cullman, Alabama 35055,  
United States**

#		Dimensions	sqft	Counted as living area
13	Utility	16'8" x 9'8"	161 sq. ft	No
14	Kitchen	17'10" x 12'3"	219 sq. ft	Yes
15	W.I.C.	19'5" x 7'3"	141 sq. ft	Yes
16	Living Room	21'2" x 13'10"	293 sq. ft	Yes
17	Porch	7'8" x 4'9"	37 sq. ft	No
18	Family Room	13'5" x 18'8"	251 sq. ft	Yes
19	Sun Room	29'9" x 9'8"	288 sq. ft	Yes
20	Bedroom	16'0" x 12'0"	192 sq. ft	Yes

**1606 Woodland Street Northwest, Cullman, Alabama 35055,  
United States**

**1 Floor 1 - Basement**

---

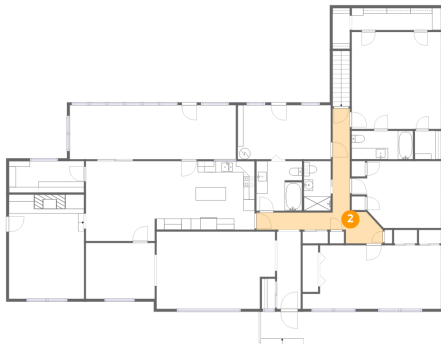


**Dimensions:** 18'5" x 27'0"  
**Area:** 497 sq. ft  
**Counted as living area:** Yes

**Heated:** Yes  
**Finished:** Yes  
**Enclosed:** Yes  
**Contiguous:** Yes  
**Permitted:** Yes  
**Wet space:** No  
**Addition:** No  
**Conversion:** No

**2 Floor 2 - Hall**

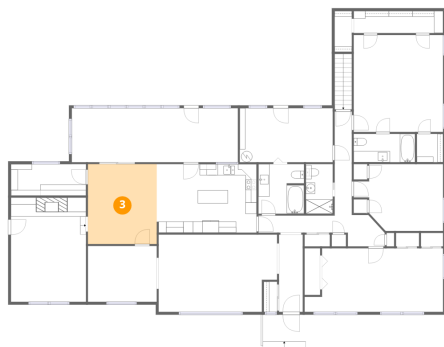
---



**Dimensions:** 22'7" x 24'2"  
**Area:** 545 sq. ft  
**Counted as living area:** Yes

**Heated:** Yes  
**Finished:** Yes  
**Enclosed:** Yes  
**Contiguous:** Yes  
**Permitted:** Yes  
**Wet space:** No  
**Addition:** No  
**Conversion:** No

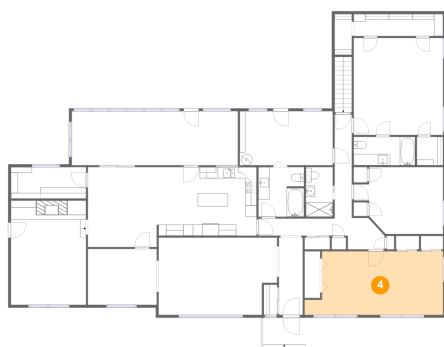
### 3 Floor 2 - Breakfast Nook



Dimensions: 12'4" x 14'4"  
Area: 176 sq. ft  
Counted as living area: Yes

Heated: Yes  
Finished: Yes  
Enclosed: Yes  
Contiguous: Yes  
Permitted: Yes  
Wet space: No  
Addition: No  
Conversion: No

### 4 Floor 2 - Bedroom



Dimensions: 24'10" x 11'5"  
Area: 282 sq. ft  
Counted as living area: Yes

Heated: Yes  
Finished: Yes  
Enclosed: Yes  
Contiguous: Yes  
Permitted: Yes  
Wet space: No  
Addition: No  
Conversion: No

### 5 Floor 2 - Bath

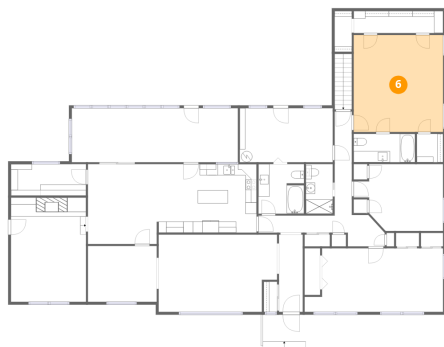


Dimensions: 4'10" x 8'10"  
Area: 43 sq. ft  
Counted as living area: Yes

Heated: Yes  
Finished: Yes  
Enclosed: Yes  
Contiguous: Yes  
Permitted: Yes  
Wet space: Yes  
Addition: No  
Conversion: No

1606 Woodland Street Northwest, Cullman, Alabama 35055,  
United States

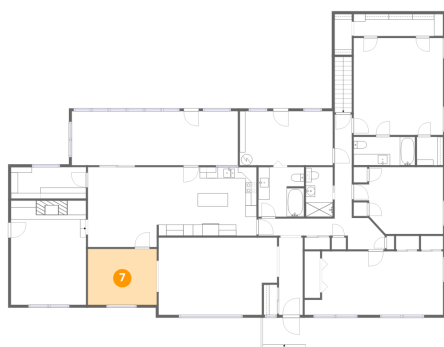
**6** Floor 2 - Primary Bedroom



Dimensions: 16'0" x 17'4"  
Area: 277 sq. ft  
Counted as living area: Yes

Heated: Yes  
Finished: Yes  
Enclosed: Yes  
Contiguous: Yes  
Permitted: Yes  
Wet space: No  
Addition: No  
Conversion: No

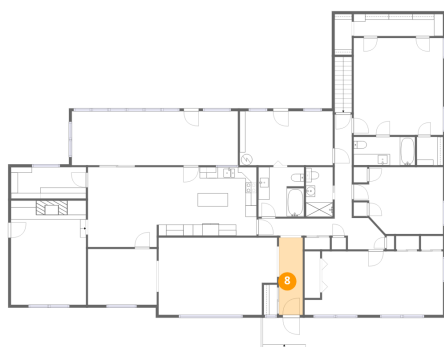
**7** Floor 2 - Dining Room



Dimensions: 12'4" x 10'0"  
Area: 123 sq. ft  
Counted as living area: Yes

Heated: Yes  
Finished: Yes  
Enclosed: Yes  
Contiguous: Yes  
Permitted: Yes  
Wet space: No  
Addition: No  
Conversion: No

**8** Floor 2 - Foyer

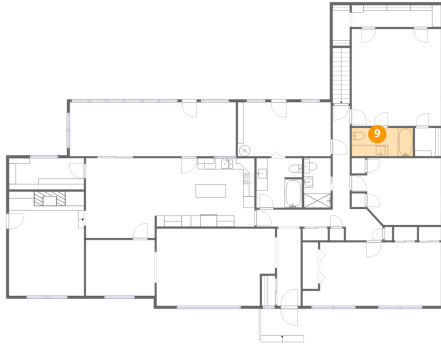


Dimensions: 4'3" x 13'10"  
Area: 59 sq. ft  
Counted as living area: Yes

Heated: Yes  
Finished: Yes  
Enclosed: Yes  
Contiguous: Yes  
Permitted: Yes  
Wet space: No  
Addition: No  
Conversion: No

1606 Woodland Street Northwest, Cullman, Alabama 35055,  
United States

9 Floor 2 - Bath



Dimensions: 11'0" x 5'1"  
Area: 56 sq. ft  
Counted as living area: Yes

Heated: Yes  
Finished: Yes  
Enclosed: Yes  
Contiguous: Yes  
Permitted: Yes  
Wet space: Yes  
Addition: No  
Conversion: No

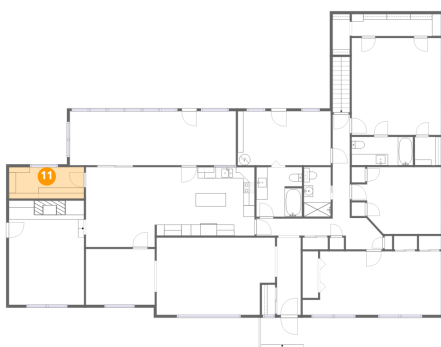
10 Floor 2 - Bath



Dimensions: 8'2" x 8'10"  
Area: 72 sq. ft  
Counted as living area: Yes

Heated: Yes  
Finished: Yes  
Enclosed: Yes  
Contiguous: Yes  
Permitted: Yes  
Wet space: Yes  
Addition: No  
Conversion: No

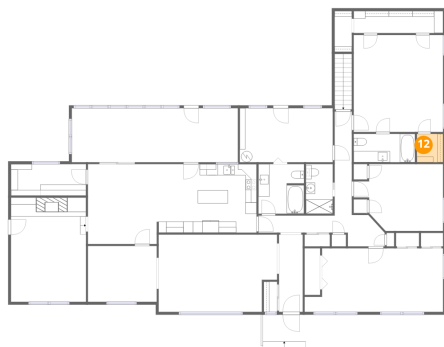
11 Floor 2 - Room



Dimensions: 13'5" x 5'8"  
Area: 76 sq. ft  
Counted as living area: Yes

Heated: Yes  
Finished: Yes  
Enclosed: Yes  
Contiguous: Yes  
Permitted: Yes  
Wet space: No  
Addition: No  
Conversion: No

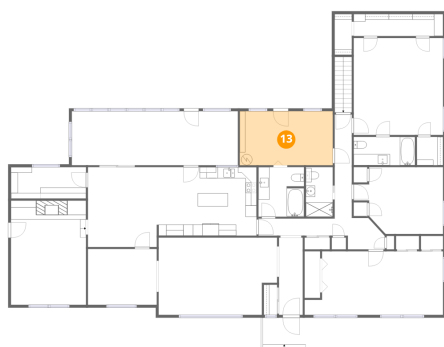
**12** Floor 2 - W.I.C.



Dimensions: 4'8" x 5'1"  
Area: 24 sq. ft  
Counted as living area: Yes

Heated: Yes  
Finished: Yes  
Enclosed: Yes  
Contiguous: Yes  
Permitted: Yes  
Wet space: No  
Addition: No  
Conversion: No

**13** Floor 2 - Utility



Dimensions: 16'8" x 9'8"  
Area: 161 sq. ft  
Counted as living area: No

Heated: Yes  
Finished: No  
Enclosed: Yes  
Contiguous: Yes  
Permitted: Yes  
Wet space: No  
Addition: No  
Conversion: No

**14** Floor 2 - Kitchen

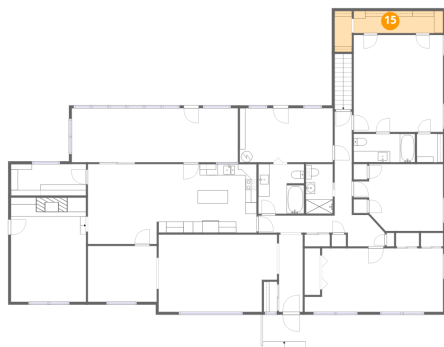


Dimensions: 17'10" x 12'3"  
Area: 219 sq. ft  
Counted as living area: Yes

Heated: Yes  
Finished: Yes  
Enclosed: Yes  
Contiguous: Yes  
Permitted: Yes  
Wet space: No  
Addition: No  
Conversion: No

1606 Woodland Street Northwest, Cullman, Alabama 35055,  
United States

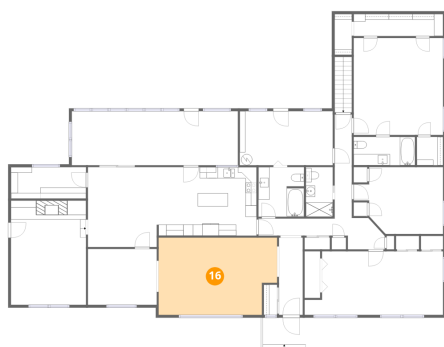
**15** Floor 2 - W.I.C.



Dimensions: 19'5" x 7'3"  
Area: 141 sq. ft  
Counted as living area: Yes

Heated: Yes  
Finished: Yes  
Enclosed: Yes  
Contiguous: Yes  
Permitted: Yes  
Wet space: No  
Addition: No  
Conversion: No

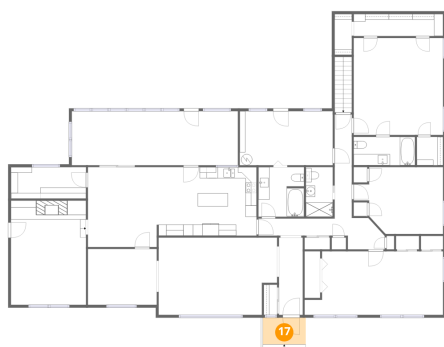
**16** Floor 2 - Living Room



Dimensions: 21'2" x 13'10"  
Area: 293 sq. ft  
Counted as living area: Yes

Heated: Yes  
Finished: Yes  
Enclosed: Yes  
Contiguous: Yes  
Permitted: Yes  
Wet space: No  
Addition: No  
Conversion: No

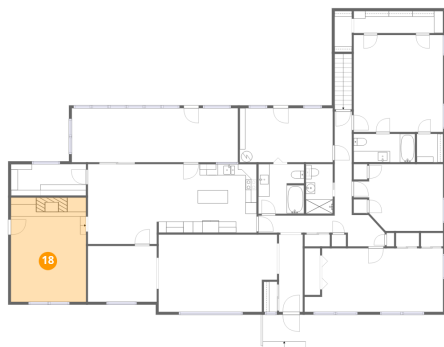
**17** Floor 2 - Porch



Dimensions: 7'8" x 4'9"  
Area: 37 sq. ft  
Counted as living area: No

Heated: No  
Finished: No  
Enclosed: No  
Contiguous: Yes  
Permitted: Yes  
Wet space: No  
Addition: No  
Conversion: No

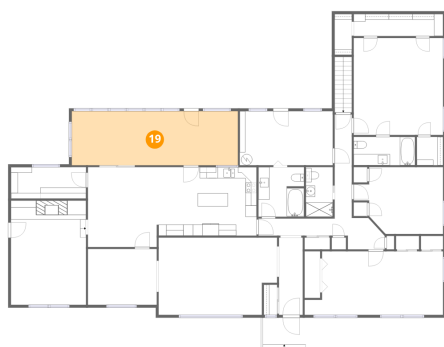
**18** Floor 2 - Family Room



Dimensions: 13'5" x 18'8"  
Area: 251 sq. ft  
Counted as living area: Yes

Heated: Yes  
Finished: Yes  
Enclosed: Yes  
Contiguous: Yes  
Permitted: Yes  
Wet space: No  
Addition: No  
Conversion: No

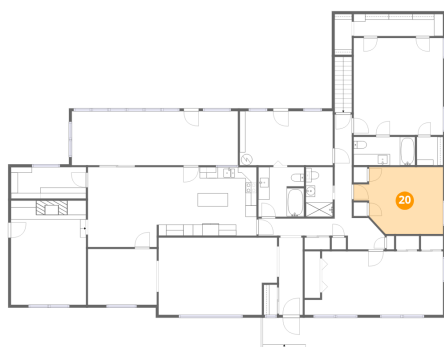
**19** Floor 2 - Sun Room



Dimensions: 29'9" x 9'8"  
Area: 288 sq. ft  
Counted as living area: Yes

Heated: Yes  
Finished: Yes  
Enclosed: Yes  
Contiguous: Yes  
Permitted: Yes  
Wet space: No  
Addition: No  
Conversion: No

**20** Floor 2 - Bedroom



Dimensions: 16'0" x 12'0"  
Area: 192 sq. ft  
Counted as living area: Yes

Heated: Yes  
Finished: Yes  
Enclosed: Yes  
Contiguous: Yes  
Permitted: Yes  
Wet space: No  
Addition: No  
Conversion: No