

# Home data report

## 3534 Morton Ave, Brookfield, IL, US



**Total Area: 1271 sq. ft**

Basement: 0 sq. ft, 1st Floor: 813 sq. ft, 2nd Floor: 458 sq. ft

Excluded: Storage 33 sq. ft, Recreation room 488 sq. ft, Utility 208 sq. ft, Laundry 84 sq. ft, Walls: 185 sq. ft

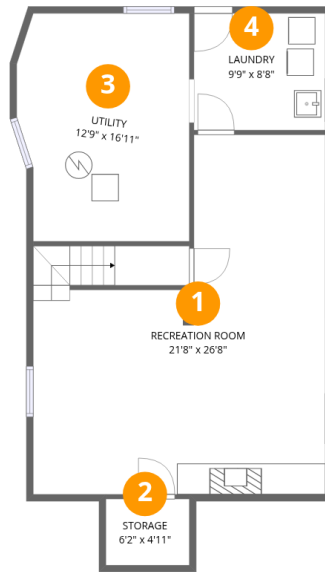
### Property summary

**3** Floors

**3** Bedrooms

**1** Bathrooms

**1** Half baths



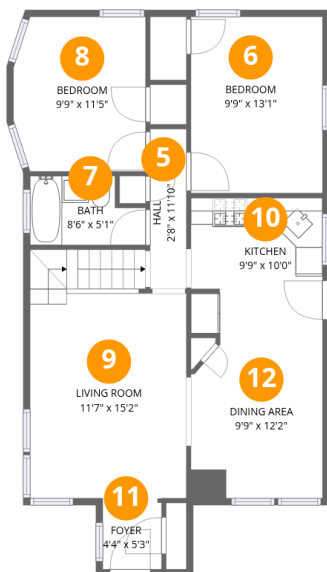
## Room dimensions

Floor 1 Below grade

Total: 0 sqft

Excluded: 813 sqft

#		Dimensions	sqft	Counted as living area
1	Recreation Room	21'8" x 26'8"	474 sq. ft	No
2	Storage	6'2" x 4'11"	30 sq. ft	No
3	Utility	12'9" x 16'11"	205 sq. ft	No
4	Laundry	9'9" x 8'8"	84 sq. ft	No

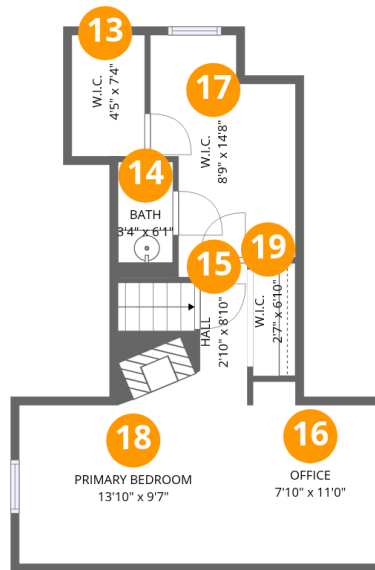


## Room dimensions

Floor 2

Total: 813 sqft Excluded: 0 sqft

#		Dimensions	sqft	Counted as living area
5	Hall	2'8" x 11'10"	32 sq. ft	Yes
6	Bedroom	9'9" x 13'1"	127 sq. ft	Yes
7	Bath	8'6" x 5'1"	38 sq. ft	Yes
8	Bedroom	9'9" x 11'5"	107 sq. ft	Yes
9	Living Room	11'7" x 15'2"	203 sq. ft	Yes
10	Kitchen	9'9" x 10'0"	97 sq. ft	Yes
11	Foyer	4'4" x 5'3"	23 sq. ft	Yes
12	Dining Area	9'9" x 12'2"	114 sq. ft	Yes



## Room dimensions

Floor 3

Total:458sqft

Excluded: 0sqft

#		Dimensions	sqft	Counted as living area
13	W.I.C.	4'5" x 7'4"	32 sq. ft	Yes
14	Bath	3'4" x 6'1"	23 sq. ft	Yes
15	Hall	2'10" x 8'10"	45 sq. ft	Yes
16	Office	7'10" x 11'0"	79 sq. ft	Yes
17	W.I.C.	8'9" x 14'8"	98 sq. ft	Yes
18	Primary Bedroom	13'10" x 9'7"	133 sq. ft	Yes
19	W.I.C.	2'7" x 6'10"	18 sq. ft	Yes

## 1 Floor 1 - Recreation Room

---

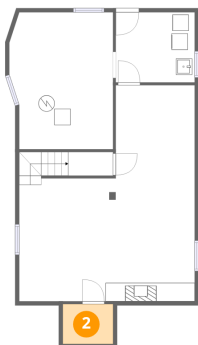


Dimensions: 21'8" x 26'8"  
Area: 474 sq. ft  
Counted as living area: No

Heated: Yes  
Finished: No  
Enclosed: Yes  
Contiguous: Yes  
Permitted: Yes  
Wet space: No  
Addition: No  
Conversion: No

## 2 Floor 1 - Storage

---



Dimensions: 6'2" x 4'11"  
Area: 30 sq. ft  
Counted as living area: No

Heated: No  
Finished: No  
Enclosed: No  
Contiguous: Yes  
Permitted: Yes  
Wet space: No  
Addition: No  
Conversion: No

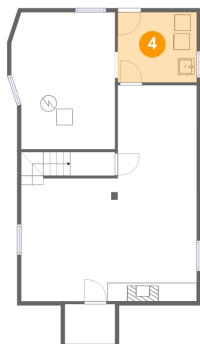
### 3 Floor 1 - Utility



Dimensions: 12'9" x 16'11"  
Area: 205 sq. ft  
Counted as living area: No

Heated: Yes  
Finished: No  
Enclosed: Yes  
Contiguous: Yes  
Permitted: Yes  
Wet space: No  
Addition: No  
Conversion: No

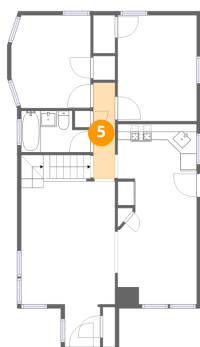
### 4 Floor 1 - Laundry



Dimensions: 9'9" x 8'8"  
Area: 84 sq. ft  
Counted as living area: No

Heated: Yes  
Finished: No  
Enclosed: Yes  
Contiguous: Yes  
Permitted: Yes  
Wet space: No  
Addition: No  
Conversion: No

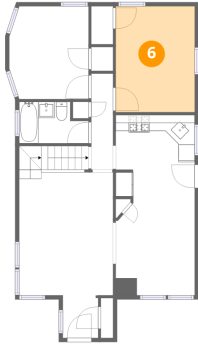
### 5 Floor 2 - Hall



Dimensions: 2'8" x 11'10"  
Area: 32 sq. ft  
Counted as living area: Yes

Heated: Yes  
Finished: Yes  
Enclosed: Yes  
Contiguous: Yes  
Permitted: Yes  
Wet space: No  
Addition: No  
Conversion: No

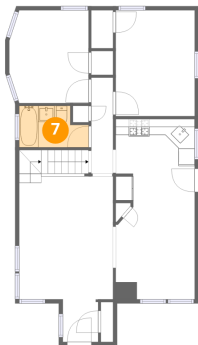
## 6 Floor 2 - Bedroom



Dimensions: 9'9" x 13'1"  
Area: 127 sq. ft  
Counted as living area: Yes

Heated: Yes  
Finished: Yes  
Enclosed: Yes  
Contiguous: Yes  
Permitted: Yes  
Wet space: No  
Addition: No  
Conversion: No

## 7 Floor 2 - Bath



Dimensions: 8'6" x 5'1"  
Area: 38 sq. ft  
Counted as living area: Yes

Heated: Yes  
Finished: Yes  
Enclosed: Yes  
Contiguous: Yes  
Permitted: Yes  
Wet space: Yes  
Addition: No  
Conversion: No

## 8 Floor 2 - Bedroom



Dimensions: 9'9" x 11'5"  
Area: 107 sq. ft  
Counted as living area: Yes

Heated: Yes  
Finished: Yes  
Enclosed: Yes  
Contiguous: Yes  
Permitted: Yes  
Wet space: No  
Addition: No  
Conversion: No

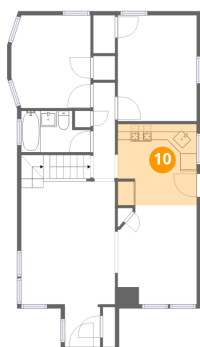
## 9 Floor 2 - Living Room



Dimensions: 11'7" x 15'2"  
Area: 203 sq. ft  
Counted as living area: Yes

Heated: Yes  
Finished: Yes  
Enclosed: Yes  
Contiguous: Yes  
Permitted: Yes  
Wet space: No  
Addition: No  
Conversion: No

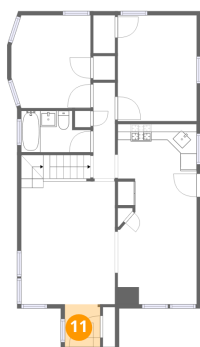
## 10 Floor 2 - Kitchen



Dimensions: 9'9" x 10'0"  
Area: 97 sq. ft  
Counted as living area: Yes

Heated: Yes  
Finished: Yes  
Enclosed: Yes  
Contiguous: Yes  
Permitted: Yes  
Wet space: No  
Addition: No  
Conversion: No

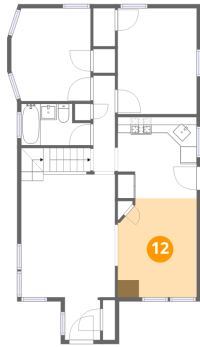
## 11 Floor 2 - Foyer



Dimensions: 4'4" x 5'3"  
Area: 23 sq. ft  
Counted as living area: Yes

Heated: Yes  
Finished: Yes  
Enclosed: Yes  
Contiguous: Yes  
Permitted: Yes  
Wet space: No  
Addition: No  
Conversion: No

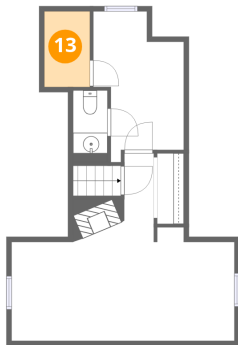
## 12 Floor 2 - Dining Area



Dimensions: 9'9" x 12'2"  
Area: 114 sq. ft  
Counted as living area: Yes

Heated: Yes  
Finished: Yes  
Enclosed: Yes  
Contiguous: Yes  
Permitted: Yes  
Wet space: No  
Addition: No  
Conversion: No

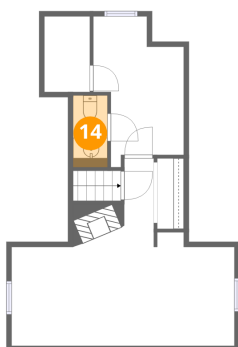
## 13 Floor 3 - W.I.C.



Dimensions: 4'5" x 7'4"  
Area: 32 sq. ft  
Counted as living area: Yes

Heated: Yes  
Finished: Yes  
Enclosed: Yes  
Contiguous: Yes  
Permitted: Yes  
Wet space: No  
Addition: No  
Conversion: No

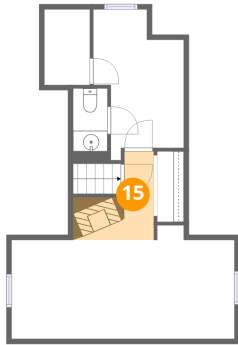
## 14 Floor 3 - Bath



Dimensions: 3'4" x 6'1"  
Area: 23 sq. ft  
Counted as living area: Yes

Heated: Yes  
Finished: Yes  
Enclosed: Yes  
Contiguous: Yes  
Permitted: Yes  
Wet space: Yes  
Addition: No  
Conversion: No

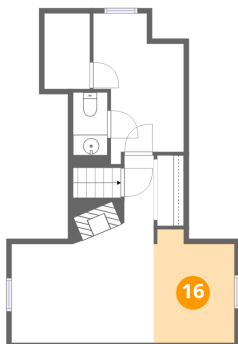
**15** Floor 3 - Hall



Dimensions: 2'10" x 8'10"  
Area: 45 sq. ft  
Counted as living area: Yes

Heated: Yes  
Finished: Yes  
Enclosed: Yes  
Contiguous: Yes  
Permitted: Yes  
Wet space: No  
Addition: No  
Conversion: No

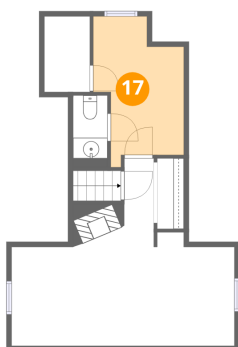
**16** Floor 3 - Office



Dimensions: 7'10" x 11'0"  
Area: 79 sq. ft  
Counted as living area: Yes

Heated: Yes  
Finished: Yes  
Enclosed: Yes  
Contiguous: Yes  
Permitted: Yes  
Wet space: No  
Addition: No  
Conversion: No

**17** Floor 3 - W.I.C.

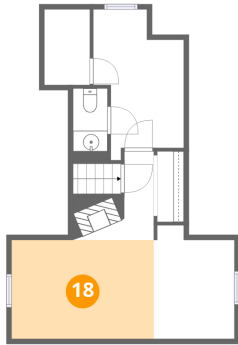


Dimensions: 8'9" x 14'8"  
Area: 98 sq. ft  
Counted as living area: Yes

Heated: Yes  
Finished: Yes  
Enclosed: Yes  
Contiguous: Yes  
Permitted: Yes  
Wet space: No  
Addition: No  
Conversion: No

**18** Floor 3 - Primary Bedroom

---

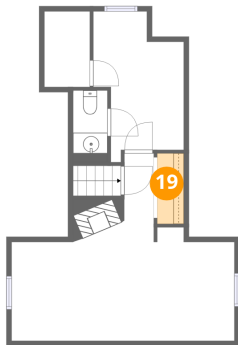


Dimensions: 13'10" x 9'7"  
Area: 133 sq. ft  
Counted as living area: Yes

Heated: Yes  
Finished: Yes  
Enclosed: Yes  
Contiguous: Yes  
Permitted: Yes  
Wet space: No  
Addition: No  
Conversion: No

**19** Floor 3 - W.I.C.

---



Dimensions: 2'7" x 6'10"  
Area: 18 sq. ft  
Counted as living area: Yes

Heated: Yes  
Finished: Yes  
Enclosed: Yes  
Contiguous: Yes  
Permitted: Yes  
Wet space: No  
Addition: No  
Conversion: No