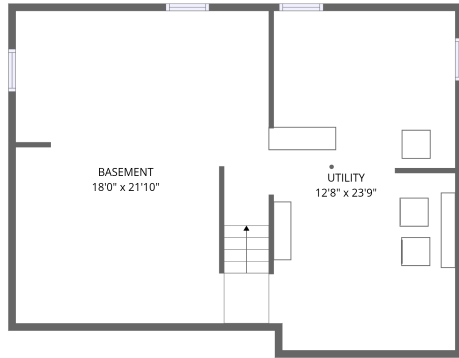
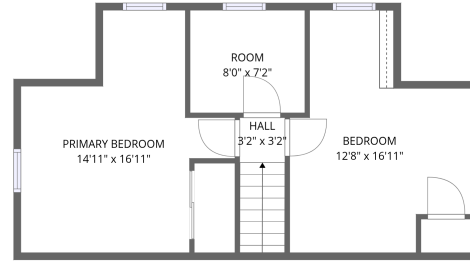
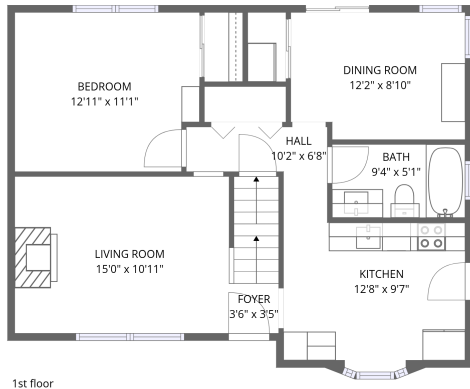


Home data report

5 Scherer St, Bethpage, NY, US

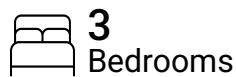


Total Area: 1152 sq. ft

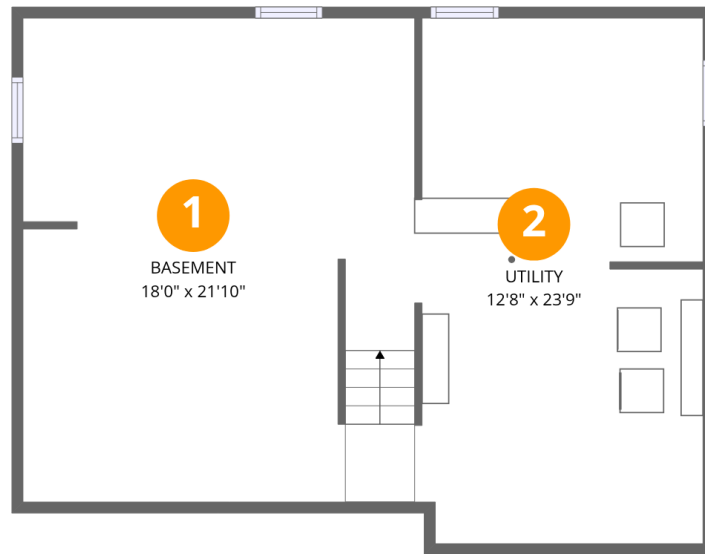
Basement: 0 sq. ft, 1st Floor: 729 sq. ft, 2nd Floor: 423 sq. ft

Excluded: Basement 394 sq. ft, Utility 300 sq. ft, Embedded window 4 sq. ft, Undefined 18 sq. ft, Low ceiling 32 sq. ft, Walls: 162 sq. ft

Property summary



5 Scherer St, Bethpage, NY, US



Room dimensions

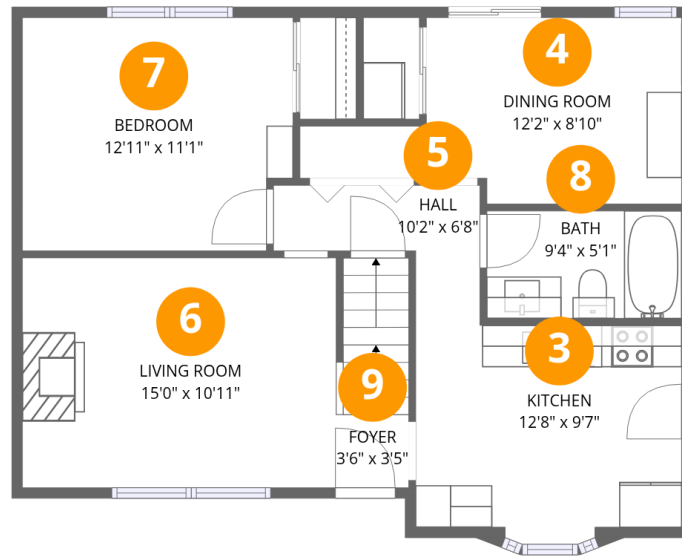
Floor 1 Below grade

Total: 0sqft

Excluded: 694sqft

| # | | Dimensions | sqft | Counted as living area |
|---|----------|----------------|------------|------------------------|
| 1 | Basement | 18'0" x 21'10" | 390 sq. ft | No |
| 2 | Utility | 12'8" x 23'9" | 298 sq. ft | No |

5 Scherer St, Bethpage, NY, US



Room dimensions

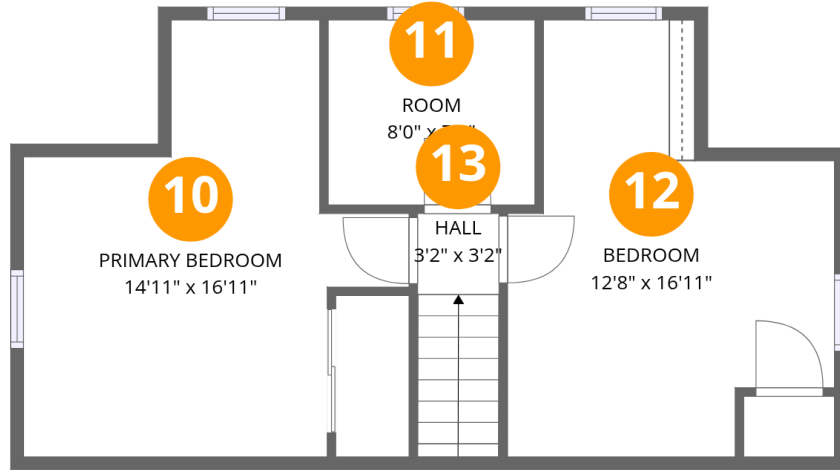
Floor 2

Total: 729 sqft

Excluded: 4 sqft

| # | | Dimensions | sqft | Counted as living area |
|---|-------------|----------------|------------|------------------------|
| 3 | Kitchen | 12'8" x 9'7" | 122 sq. ft | Yes |
| 4 | Dining Room | 12'2" x 8'10" | 105 sq. ft | Yes |
| 5 | Hall | 10'2" x 6'8" | 43 sq. ft | Yes |
| 6 | Living Room | 15'0" x 10'11" | 165 sq. ft | Yes |
| 7 | Bedroom | 12'11" x 11'1" | 139 sq. ft | Yes |
| 8 | Bath | 9'4" x 5'1" | 48 sq. ft | Yes |
| 9 | Foyer | 3'6" x 3'5" | 36 sq. ft | Yes |

5 Scherer St, Bethpage, NY, US



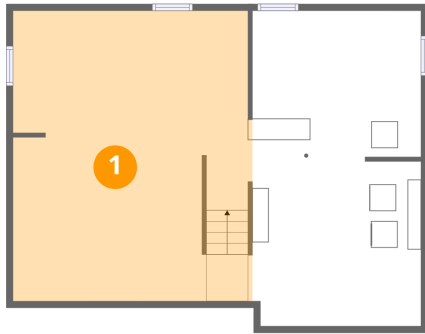
Room dimensions

Floor 3

Total: 423sqft Excluded: 50sqft

| # | | Dimensions | sqft | Counted as living area |
|----|-----------------|-----------------|------------|------------------------|
| 10 | Primary Bedroom | 14'11" x 16'11" | 159 sq. ft | Yes |
| 11 | Room | 8'0" x 7'2" | 58 sq. ft | Yes |
| 12 | Bedroom | 12'8" x 16'11" | 150 sq. ft | Yes |
| 13 | Hall | 3'2" x 3'2" | 30 sq. ft | Yes |

1 Floor 1 - Basement



Dimensions: 18'0" x 21'10"
Area: 390 sq. ft
Counted as living area: No

Heated: Yes
Finished: No
Enclosed: Yes
Contiguous: Yes
Permitted: Yes
Wet space: No
Addition: No
Conversion: No

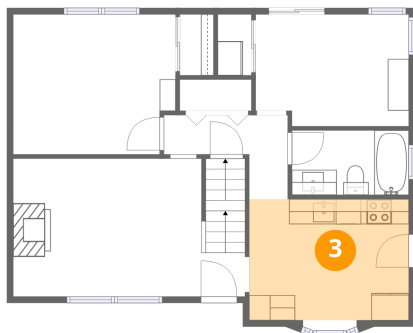
2 Floor 1 - Utility



Dimensions: 12'8" x 23'9"
Area: 298 sq. ft
Counted as living area: No

Heated: Yes
Finished: No
Enclosed: Yes
Contiguous: Yes
Permitted: Yes
Wet space: No
Addition: No
Conversion: No

3 Floor 2 - Kitchen



Dimensions: 12'8" x 9'7"
Area: 122 sq. ft
Counted as living area: Yes

Heated: Yes
Finished: Yes
Enclosed: Yes
Contiguous: Yes
Permitted: Yes
Wet space: No
Addition: No
Conversion: No

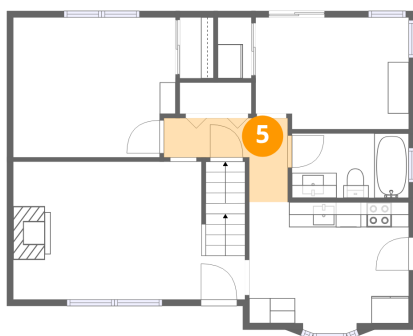
4 Floor 2 - Dining Room



Dimensions: 12'2" x 8'10"
Area: 105 sq. ft
Counted as living area: Yes

Heated: Yes
Finished: Yes
Enclosed: Yes
Contiguous: Yes
Permitted: Yes
Wet space: No
Addition: No
Conversion: No

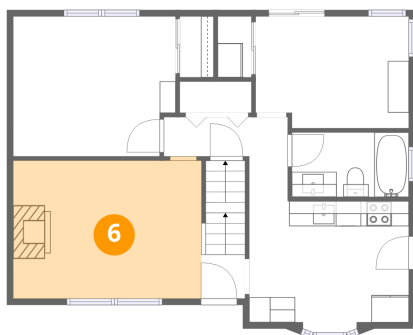
5 Floor 2 - Hall



Dimensions: 10'2" x 6'8"
Area: 43 sq. ft
Counted as living area: Yes

Heated: Yes
Finished: Yes
Enclosed: Yes
Contiguous: Yes
Permitted: Yes
Wet space: No
Addition: No
Conversion: No

6 Floor 2 - Living Room



Dimensions: 15'0" x 10'11"
Area: 165 sq. ft
Counted as living area: Yes

Heated: Yes
Finished: Yes
Enclosed: Yes
Contiguous: Yes
Permitted: Yes
Wet space: No
Addition: No
Conversion: No

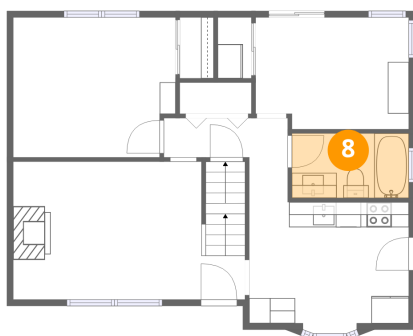
7 Floor 2 - Bedroom



Dimensions: 12'11" x 11'1"
Area: 139 sq. ft
Counted as living area: Yes

Heated: Yes
Finished: Yes
Enclosed: Yes
Contiguous: Yes
Permitted: Yes
Wet space: No
Addition: No
Conversion: No

8 Floor 2 - Bath



Dimensions: 9'4" x 5'1"
Area: 48 sq. ft
Counted as living area: Yes

Heated: Yes
Finished: Yes
Enclosed: Yes
Contiguous: Yes
Permitted: Yes
Wet space: Yes
Addition: No
Conversion: No

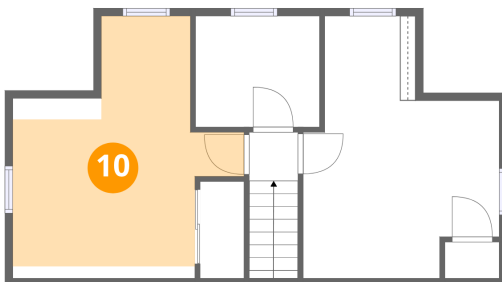
9 Floor 2 - Foyer



Dimensions: 3'6" x 3'5"
Area: 36 sq. ft
Counted as living area: Yes

Heated: Yes
Finished: Yes
Enclosed: Yes
Contiguous: Yes
Permitted: Yes
Wet space: No
Addition: No
Conversion: No

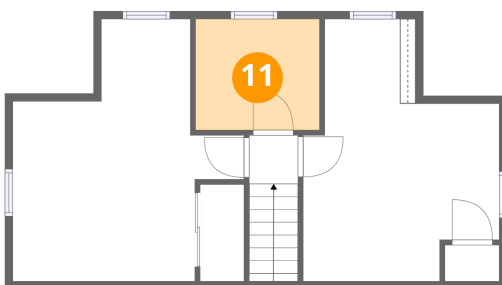
10 Floor 3 - Primary Bedroom



Dimensions: 14'11" x 16'11"
Area: 159 sq. ft
Counted as living area: Yes

Heated: Yes
Finished: Yes
Enclosed: Yes
Contiguous: Yes
Permitted: Yes
Wet space: No
Addition: No
Conversion: No

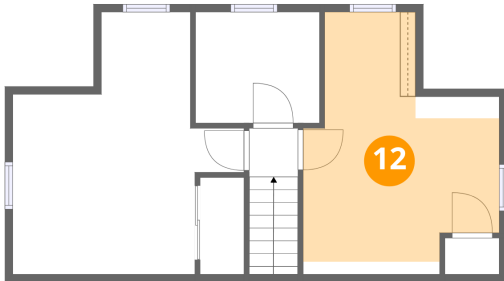
11 Floor 3 - Room



Dimensions: 8'0" x 7'2"
Area: 58 sq. ft
Counted as living area: Yes

Heated: Yes
Finished: Yes
Enclosed: Yes
Contiguous: Yes
Permitted: Yes
Wet space: No
Addition: No
Conversion: No

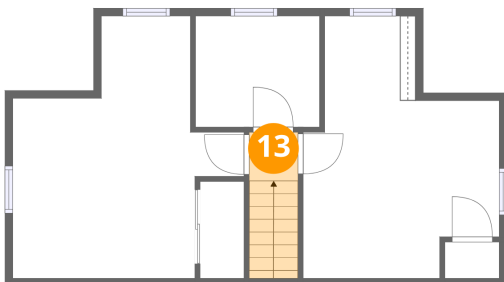
12 Floor 3 - Bedroom



Dimensions: 12'8" x 16'11"
Area: 150 sq. ft
Counted as living area: Yes

Heated: Yes
Finished: Yes
Enclosed: Yes
Contiguous: Yes
Permitted: Yes
Wet space: No
Addition: No
Conversion: No

13 Floor 3 - Hall



Dimensions: 3'2" x 3'2"
Area: 30 sq. ft
Counted as living area: Yes

Heated: Yes
Finished: Yes
Enclosed: Yes
Contiguous: Yes
Permitted: Yes
Wet space: No
Addition: No
Conversion: No