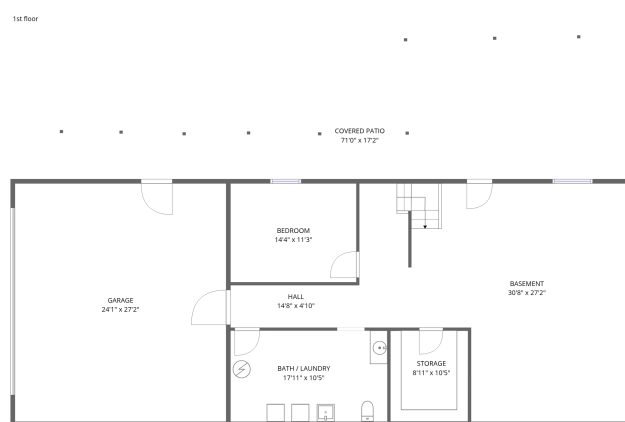
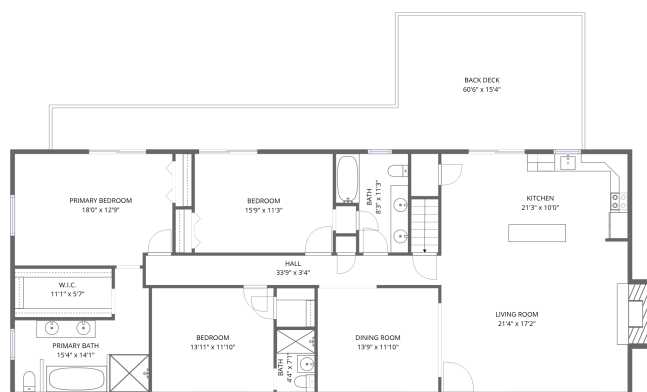


Home data report

6244 Corntassel Lane, Roanoke, Virginia 24018, United States



Total Area: 2077 sq. ft

Basement: 171 sq. ft, 1st Floor: 1906 sq. ft

Excluded: Storage 102 sq. ft, Bath / laundry 192 sq. ft, Garage 655 sq. ft, Covered patio 849 sq. ft, Basement 697 sq. ft, Hall 71 sq. ft, Back deck 509 sq. ft, Fireplace 20 sq. ft, Walls: 206 sq. ft

Property summary

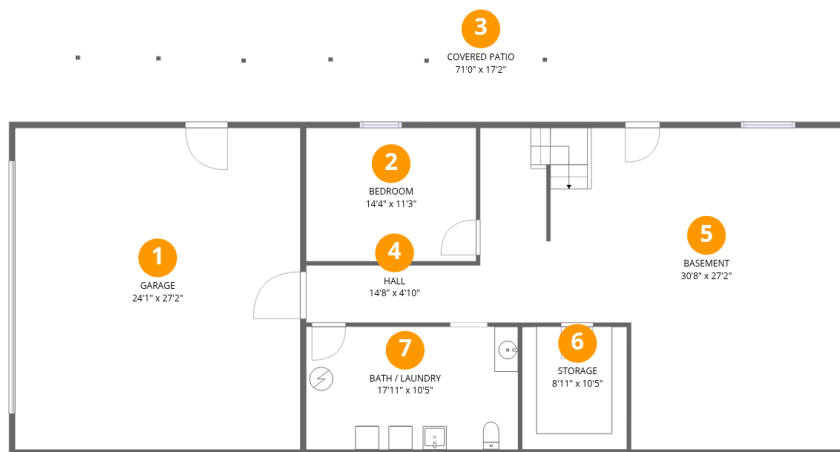


Home data report

6244 Corntassel Lane, Roanoke, Virginia 24018, United States

 **1**
Half baths

 **1**
Garages



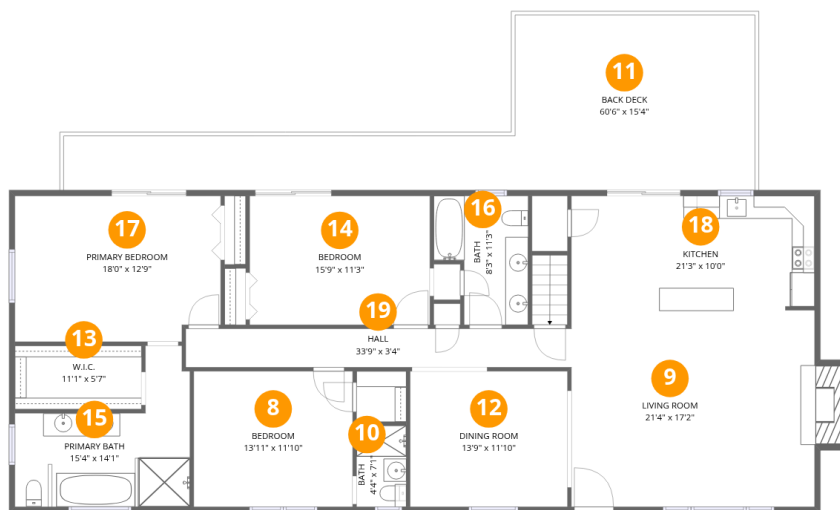
Room dimensions

Floor 1 Below grade

Total:171sqft

Excluded: 2566sqft

#		Dimensions	sqft	Counted as living area
1	Garage	24'1" x 27'2"	655 sq. ft	No
2	Bedroom	14'4" x 11'3"	162 sq. ft	Yes
3	Covered Patio	71'0" x 17'2"	1221 sq. ft	No
4	Hall	14'8" x 4'10"	71 sq. ft	No
5	Basement	30'8" x 27'2"	834 sq. ft	No
6	Storage	8'11" x 10'5"	92 sq. ft	No
7	Bath / Laundry	17'11" x 10'5"	186 sq. ft	No



Room dimensions

Floor 2

Total:1906sqft Excluded: 529sqft

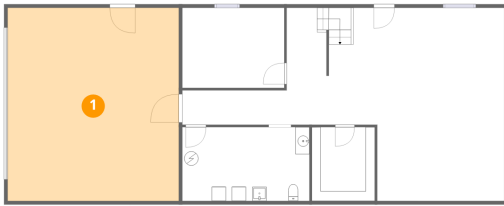
#		Dimensions	sqft	Counted as living area
8	Bedroom	13'11" x 11'10"	165 sq. ft	Yes
9	Living Room	21'4" x 17'2"	367 sq. ft	Yes
10	Bath	4'4" x 7'1"	31 sq. ft	Yes
11	Back Deck	60'6" x 15'4"	926 sq. ft	No
12	Dining Room	13'9" x 11'10"	163 sq. ft	Yes
13	W.I.C.	11'1" x 5'7"	62 sq. ft	Yes
14	Bedroom	15'9" x 11'3"	178 sq. ft	Yes
15	Primary Bath	15'4" x 14'1"	216 sq. ft	Yes
16	Bath	8'3" x 11'3"	93 sq. ft	Yes
17	Primary Bedroom	18'0" x 12'9"	230 sq. ft	Yes
18	Kitchen	21'3" x 10'0"	213 sq. ft	Yes

Home data report

6244 Corntassel Lane, Roanoke, Virginia 24018, United States

#		Dimensions	sqft	Counted as living area
19	Hall	33'9" x 3'4"	114 sq. ft	Yes

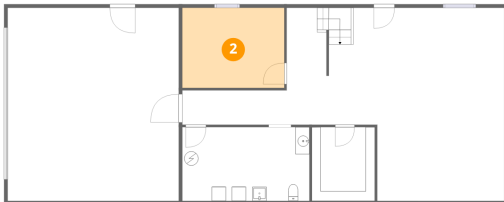
1 Floor 1 - Garage



Dimensions: 24'1" x 27'2"
Area: 655 sq. ft
Counted as living area: No

Heated: No
Finished: No
Enclosed: Yes
Contiguous: Yes
Permitted: Yes
Wet space: No
Addition: No
Conversion: No

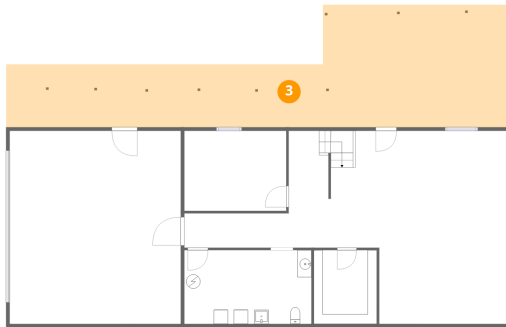
2 Floor 1 - Bedroom



Dimensions: 14'4" x 11'3"
Area: 162 sq. ft
Counted as living area: No

Heated: Yes
Finished: Yes
Enclosed: Yes
Contiguous: No
Permitted: Yes
Wet space: No
Addition: No
Conversion: No

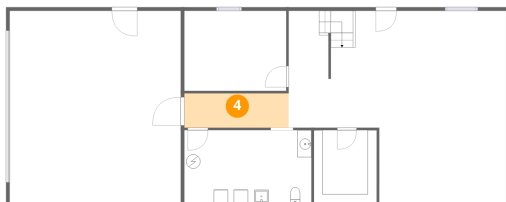
3 Floor 1 - Covered Patio



Dimensions: 71'0" x 17'2"
Area: 1221 sq. ft
Counted as living area: No

Heated: No
Finished: No
Enclosed: No
Contiguous: Yes
Permitted: Yes
Wet space: No
Addition: No
Conversion: No

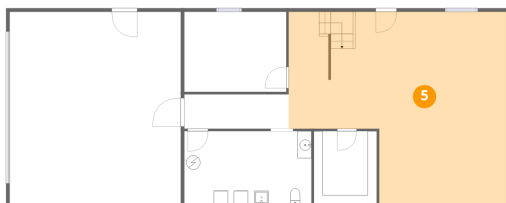
4 Floor 1 - Hall



Dimensions: 14'8" x 4'10"
Area: 71 sq. ft
Counted as living area: No

Heated: Yes
Finished: No
Enclosed: Yes
Contiguous: Yes
Permitted: Yes
Wet space: No
Addition: No
Conversion: No

5 Floor 1 - Basement



Dimensions: 30'8" x 27'2"
Area: 834 sq. ft
Counted as living area: No

Heated: Yes
Finished: No
Enclosed: Yes
Contiguous: Yes
Permitted: Yes
Wet space: No
Addition: No
Conversion: No

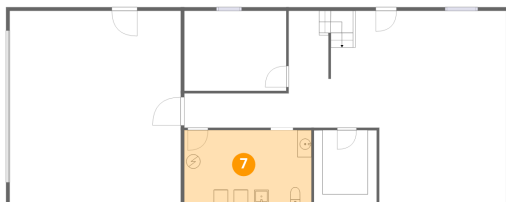
6 Floor 1 - Storage



Dimensions: 8'11" x 10'5"
Area: 92 sq. ft
Counted as living area: No

Heated: No
Finished: No
Enclosed: No
Contiguous: Yes
Permitted: Yes
Wet space: No
Addition: No
Conversion: No

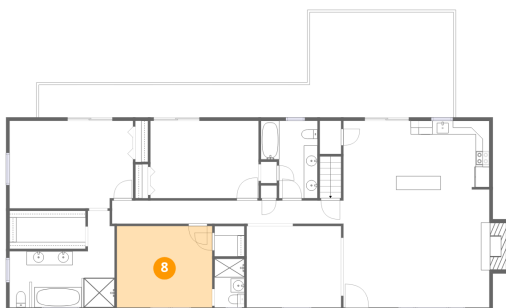
7 Floor 1 - Bath / Laundry



Dimensions: 17'11" x 10'5"
Area: 186 sq. ft
Counted as living area: No

Heated: Yes
Finished: No
Enclosed: Yes
Contiguous: Yes
Permitted: Yes
Wet space: Yes
Addition: No
Conversion: No

8 Floor 2 - Bedroom



Dimensions: 13'11" x 11'10"
Area: 165 sq. ft
Counted as living area: Yes

Heated: Yes
Finished: Yes
Enclosed: Yes
Contiguous: Yes
Permitted: Yes
Wet space: No
Addition: No
Conversion: No

9 Floor 2 - Living Room



Dimensions: 21'4" x 17'2"
Area: 367 sq. ft
Counted as living area: Yes

Heated: Yes
Finished: Yes
Enclosed: Yes
Contiguous: Yes
Permitted: Yes
Wet space: No
Addition: No
Conversion: No

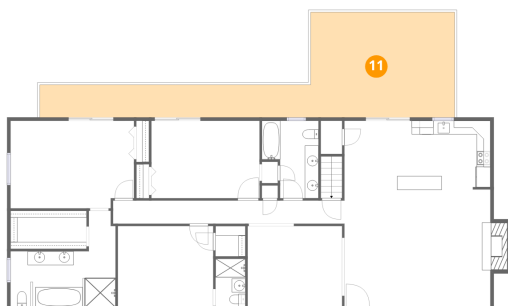
10 Floor 2 - Bath



Dimensions: 4'4" x 7'1"
Area: 31 sq. ft
Counted as living area: Yes

Heated: Yes
Finished: Yes
Enclosed: Yes
Contiguous: Yes
Permitted: Yes
Wet space: Yes
Addition: No
Conversion: No

11 Floor 2 - Back Deck



Dimensions: 60'6" x 15'4"
Area: 926 sq. ft
Counted as living area: No

Heated: No
Finished: No
Enclosed: No
Contiguous: No
Permitted: Yes
Wet space: No
Addition: No
Conversion: No

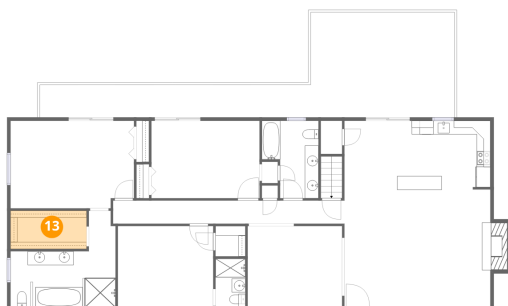
12 Floor 2 - Dining Room



Dimensions: 13'9" x 11'10"
Area: 163 sq. ft
Counted as living area: Yes

Heated: Yes
Finished: Yes
Enclosed: Yes
Contiguous: Yes
Permitted: Yes
Wet space: No
Addition: No
Conversion: No

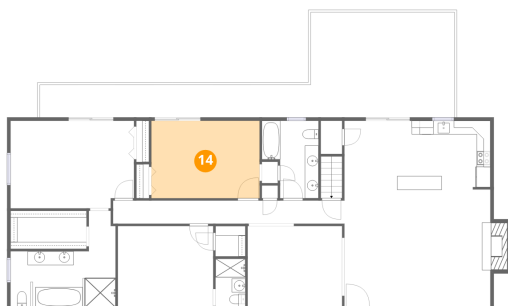
13 Floor 2 - W.I.C.



Dimensions: 11'1" x 5'7"
Area: 62 sq. ft
Counted as living area: Yes

Heated: Yes
Finished: Yes
Enclosed: Yes
Contiguous: Yes
Permitted: Yes
Wet space: No
Addition: No
Conversion: No

14 Floor 2 - Bedroom



Dimensions: 15'9" x 11'3"
Area: 178 sq. ft
Counted as living area: Yes

Heated: Yes
Finished: Yes
Enclosed: Yes
Contiguous: Yes
Permitted: Yes
Wet space: No
Addition: No
Conversion: No

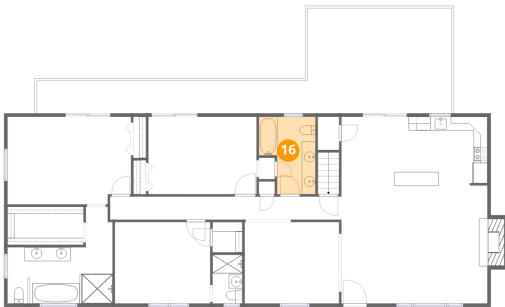
15 Floor 2 - Primary Bath



Dimensions: 15'4" x 14'1"
Area: 216 sq. ft
Counted as living area: Yes

Heated: Yes
Finished: Yes
Enclosed: Yes
Contiguous: Yes
Permitted: Yes
Wet space: Yes
Addition: No
Conversion: No

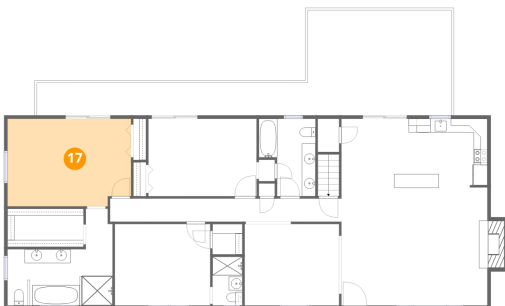
16 Floor 2 - Bath



Dimensions: 8'3" x 11'3"
Area: 93 sq. ft
Counted as living area: Yes

Heated: Yes
Finished: Yes
Enclosed: Yes
Contiguous: Yes
Permitted: Yes
Wet space: Yes
Addition: No
Conversion: No

17 Floor 2 - Primary Bedroom



Dimensions: 18'0" x 12'9"
Area: 230 sq. ft
Counted as living area: Yes

Heated: Yes
Finished: Yes
Enclosed: Yes
Contiguous: Yes
Permitted: Yes
Wet space: No
Addition: No
Conversion: No

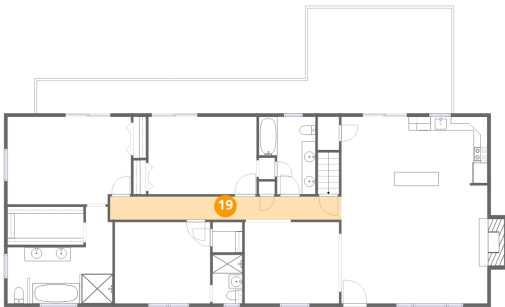
18 Floor 2 - Kitchen



Dimensions: 21'3" x 10'0"
Area: 213 sq. ft
Counted as living area: Yes

Heated: Yes
Finished: Yes
Enclosed: Yes
Contiguous: Yes
Permitted: Yes
Wet space: No
Addition: No
Conversion: No

19 Floor 2 - Hall



Dimensions: 33'9" x 3'4"
Area: 114 sq. ft
Counted as living area: Yes

Heated: Yes
Finished: Yes
Enclosed: Yes
Contiguous: Yes
Permitted: Yes
Wet space: No
Addition: No
Conversion: No