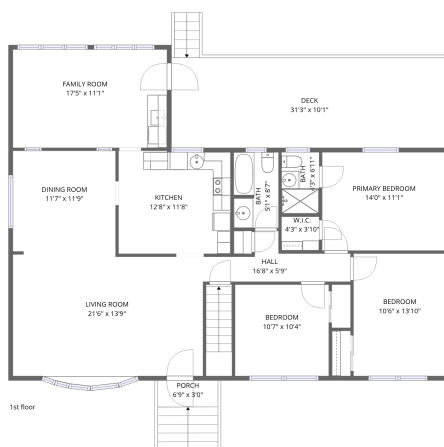


Home data report

13 Hildale Road, Pine Brook, Morris County, New Jersey, United States, 07058



Total Area: 1448 sq. ft

Basement: 0 sq. ft, 1st Floor: 1448 sq. ft

Excluded: Garage 539 sq. ft, Basement 692 sq. ft, Workshop 196 sq. ft, Deck 331 sq. ft, Porch 20 sq. ft, Walls: 187 sq. ft

Property summary



Home data report

13 Hildale Road, Pine Brook, Morris County, New Jersey, United States, 07058



Room dimensions

Floor 1 Below grade

Total:0sqft

Excluded: 1427sqft

#		Dimensions	sqft	Counted as living area
1	Workshop	17'5" x 11'3"	196 sq. ft	No
2	Basement	27'1" x 25'3"	685 sq. ft	No
3	Garage	21'4" x 25'3"	539 sq. ft	No

Home data report

13 Hildale Road, Pine Brook, Morris County, New Jersey, United States, 07058



Room dimensions

Floor 2

Total:1448sqft Excluded: 351sqft

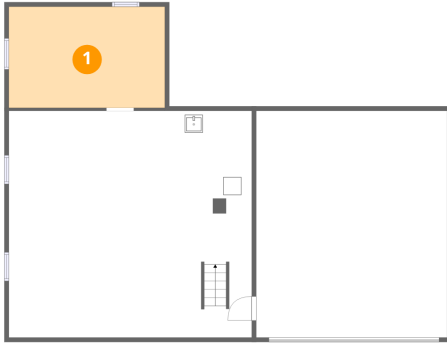
#		Dimensions	sqft	Counted as living area
4	Kitchen	12'8" x 11'8"	147 sq. ft	Yes
5	Deck	31'3" x 10'1"	316 sq. ft	No
6	Bath	5'1" x 8'7"	43 sq. ft	Yes
7	Primary Bedroom	14'0" x 11'1"	156 sq. ft	Yes
8	Bath	4'3" x 6'11"	30 sq. ft	Yes
9	Bedroom	10'7" x 10'4"	109 sq. ft	Yes
10	Family Room	17'5" x 11'1"	194 sq. ft	Yes
11	Porch	6'9" x 3'0"	20 sq. ft	No
12	Hall	16'8" x 5'9"	96 sq. ft	Yes
13	Bedroom	10'6" x 13'10"	145 sq. ft	Yes
14	Living Room	21'6" x 13'9"	295 sq. ft	Yes

Home data report

13 Hildale Road, Pine Brook, Morris County, New Jersey, United States, 07058

#		Dimensions	sqft	Counted as living area
15	W.I.C.	4'3" x 3'10"	16 sq. ft	Yes
16	Dining Room	11'7" x 11'9"	136 sq. ft	Yes

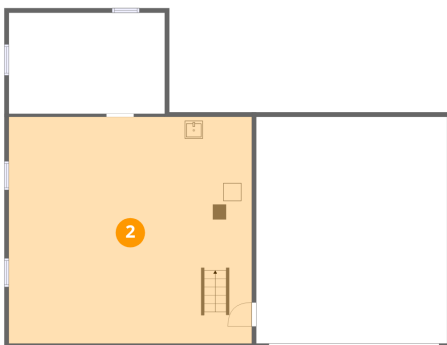
1 Floor 1 - Workshop



Dimensions: 17'5" x 11'3"
Area: 196 sq. ft
Counted as living area: No

Heated: No
Finished: No
Enclosed: Yes
Contiguous: No
Permitted: Yes
Wet space: No
Addition: No
Conversion: No

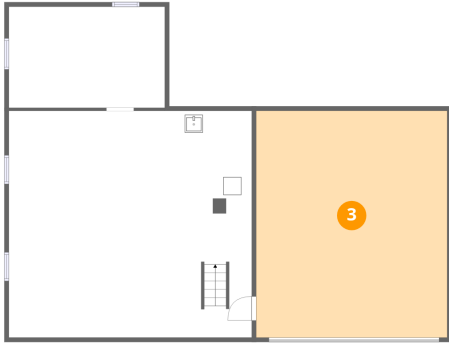
2 Floor 1 - Basement



Dimensions: 27'1" x 25'3"
Area: 685 sq. ft
Counted as living area: No

Heated: Yes
Finished: No
Enclosed: Yes
Contiguous: Yes
Permitted: Yes
Wet space: No
Addition: No
Conversion: No

3 Floor 1 - Garage



Dimensions: 21'4" x 25'3"
Area: 539 sq. ft
Counted as living area: No

Heated: No
Finished: No
Enclosed: Yes
Contiguous: Yes
Permitted: Yes
Wet space: No
Addition: No
Conversion: No

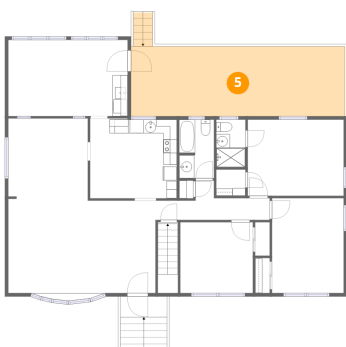
4 Floor 2 - Kitchen



Dimensions: 12'8" x 11'8"
Area: 147 sq. ft
Counted as living area: Yes

Heated: Yes
Finished: Yes
Enclosed: Yes
Contiguous: Yes
Permitted: Yes
Wet space: No
Addition: No
Conversion: No

5 Floor 2 - Deck



Dimensions: 31'3" x 10'1"
Area: 316 sq. ft
Counted as living area: No

Heated: No
Finished: No
Enclosed: No
Contiguous: Yes
Permitted: Yes
Wet space: No
Addition: No
Conversion: No

6 Floor 2 - Bath



Dimensions: 5'1" x 8'7"
Area: 43 sq. ft
Counted as living area: Yes

Heated: Yes
Finished: Yes
Enclosed: Yes
Contiguous: Yes
Permitted: Yes
Wet space: Yes
Addition: No
Conversion: No

7 Floor 2 - Primary Bedroom



Dimensions: 14'0" x 11'1"
Area: 156 sq. ft
Counted as living area: Yes

Heated: Yes
Finished: Yes
Enclosed: Yes
Contiguous: Yes
Permitted: Yes
Wet space: No
Addition: No
Conversion: No

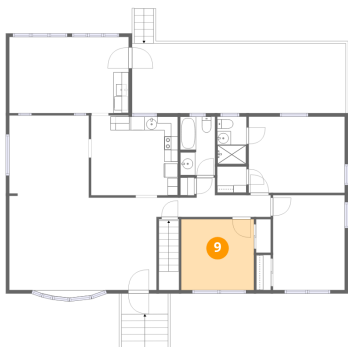
8 Floor 2 - Bath



Dimensions: 4'3" x 6'11"
Area: 30 sq. ft
Counted as living area: Yes

Heated: Yes
Finished: Yes
Enclosed: Yes
Contiguous: Yes
Permitted: Yes
Wet space: Yes
Addition: No
Conversion: No

9 Floor 2 - Bedroom



Dimensions: 10'7" x 10'4"
Area: 109 sq. ft
Counted as living area: Yes

Heated: Yes
Finished: Yes
Enclosed: Yes
Contiguous: Yes
Permitted: Yes
Wet space: No
Addition: No
Conversion: No

10 Floor 2 - Family Room



Dimensions: 17'5" x 11'1"
Area: 194 sq. ft
Counted as living area: Yes

Heated: Yes
Finished: Yes
Enclosed: Yes
Contiguous: Yes
Permitted: Yes
Wet space: No
Addition: No
Conversion: No

11 Floor 2 - Porch



Dimensions: 6'9" x 3'0"
Area: 20 sq. ft
Counted as living area: No

Heated: No
Finished: No
Enclosed: No
Contiguous: Yes
Permitted: Yes
Wet space: No
Addition: No
Conversion: No

12 Floor 2 - Hall



Dimensions: 16'8" x 5'9"
Area: 96 sq. ft
Counted as living area: Yes

Heated: Yes
Finished: Yes
Enclosed: Yes
Contiguous: Yes
Permitted: Yes
Wet space: No
Addition: No
Conversion: No

13 Floor 2 - Bedroom



Dimensions: 10'6" x 13'10"
Area: 145 sq. ft
Counted as living area: Yes

Heated: Yes
Finished: Yes
Enclosed: Yes
Contiguous: Yes
Permitted: Yes
Wet space: No
Addition: No
Conversion: No

14 Floor 2 - Living Room



Dimensions: 21'6" x 13'9"
Area: 295 sq. ft
Counted as living area: Yes

Heated: Yes
Finished: Yes
Enclosed: Yes
Contiguous: Yes
Permitted: Yes
Wet space: No
Addition: No
Conversion: No

15 Floor 2 - W.I.C.



Dimensions: 4'3" x 3'10"
Area: 16 sq. ft
Counted as living area: Yes

Heated: Yes
Finished: Yes
Enclosed: Yes
Contiguous: Yes
Permitted: Yes
Wet space: No
Addition: No
Conversion: No

16 Floor 2 - Dining Room



Dimensions: 11'7" x 11'9"
Area: 136 sq. ft
Counted as living area: Yes

Heated: Yes
Finished: Yes
Enclosed: Yes
Contiguous: Yes
Permitted: Yes
Wet space: No
Addition: No
Conversion: No