

1st floor

Total Area: 978 sq. ft

1st Floor: 978 sq. ft

Excluded: Balcony 35 sq. ft, Walls: 66 sq. ft

Property summary

 **1** Floors

 **2** Bedrooms

 **2** Bathrooms

6217 Brookhaven Court, Riverdale, New Jersey, United States



Room dimensions

Floor 1

Total: 978 sqft Excluded: 35 sqft

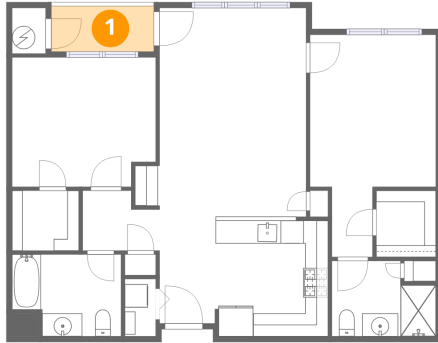
#		Dimensions	sqft	Counted as living area
1	Balcony	8'11" x 4'0"	35 sq. ft	No
2	Bath	9'1" x 6'7"	59 sq. ft	Yes
3	Foyer	4'10" x 9'3"	45 sq. ft	Yes
4	Bedroom	12'6" x 11'3"	141 sq. ft	Yes
5	Bath	9'6" x 7'1"	67 sq. ft	Yes
6	W.I.C.	5'2" x 5'9"	30 sq. ft	Yes
7	W.I.C.	5'9" x 5'2"	30 sq. ft	Yes
8	Living Room	14'11" x 12'9"	190 sq. ft	Yes
9	Dining Area	12'9" x 5'4"	69 sq. ft	Yes
10	Primary Bedroom	10'11" x 19'4"	211 sq. ft	Yes
11	Kitchen	9'10" x 10'5"	102 sq. ft	Yes

Home data report

6217 Brookhaven Court, Riverdale, New Jersey, United States

#		Dimensions	sqft	Counted as living area
12	Hall	6'8" x 5'3"	35 sq. ft	Yes

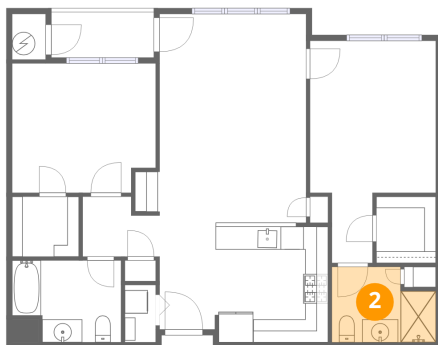
1 Floor 1 - Balcony



Dimensions: 8'11" x 4'0"
Area: 35 sq. ft
Counted as living area: No

Heated: No
Finished: No
Enclosed: No
Contiguous: Yes
Permitted: Yes
Wet space: No
Addition: No
Conversion: No

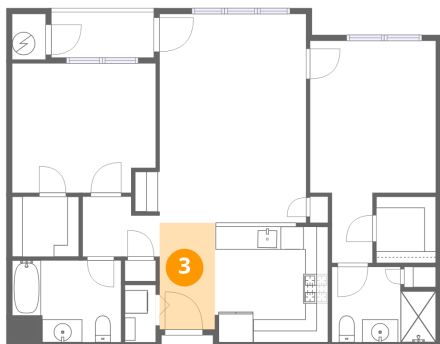
2 Floor 1 - Bath



Dimensions: 9'1" x 6'7"
Area: 59 sq. ft
Counted as living area: Yes

Heated: Yes
Finished: Yes
Enclosed: Yes
Contiguous: Yes
Permitted: Yes
Wet space: Yes
Addition: No
Conversion: No

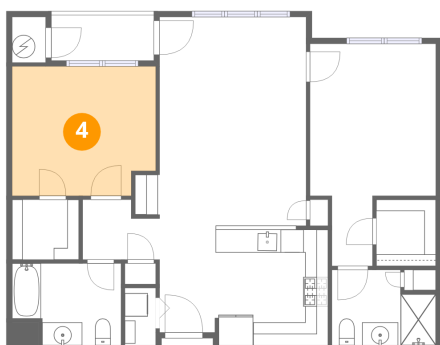
3 Floor 1 - Foyer



Dimensions: 4'10" x 9'3"
Area: 45 sq. ft
Counted as living area: Yes

Heated: Yes
Finished: Yes
Enclosed: Yes
Contiguous: Yes
Permitted: Yes
Wet space: No
Addition: No
Conversion: No

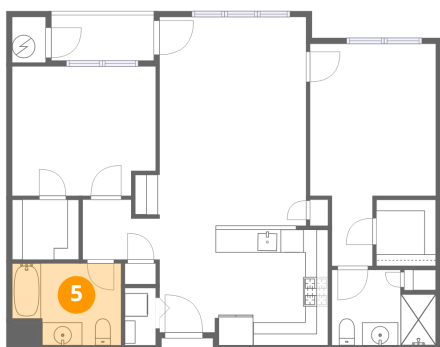
4 Floor 1 - Bedroom



Dimensions: 12'6" x 11'3"
Area: 141 sq. ft
Counted as living area: Yes

Heated: Yes
Finished: Yes
Enclosed: Yes
Contiguous: Yes
Permitted: Yes
Wet space: No
Addition: No
Conversion: No

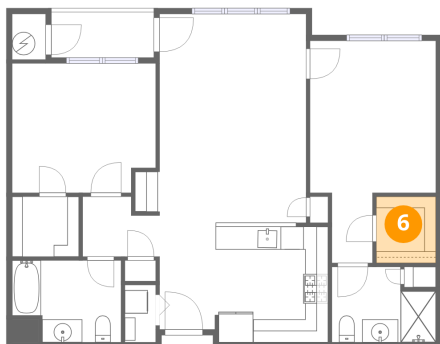
5 Floor 1 - Bath



Dimensions: 9'6" x 7'1"
Area: 67 sq. ft
Counted as living area: Yes

Heated: Yes
Finished: Yes
Enclosed: Yes
Contiguous: Yes
Permitted: Yes
Wet space: Yes
Addition: No
Conversion: No

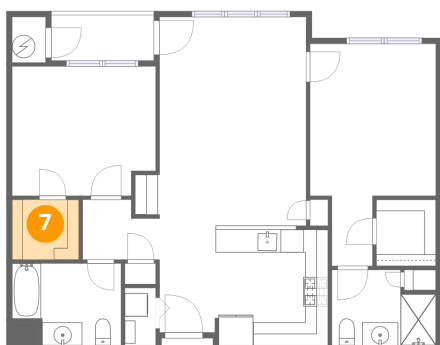
6 Floor 1 - W.I.C.



Dimensions: 5'2" x 5'9"
Area: 30 sq. ft
Counted as living area: Yes

Heated: Yes
Finished: Yes
Enclosed: Yes
Contiguous: Yes
Permitted: Yes
Wet space: No
Addition: No
Conversion: No

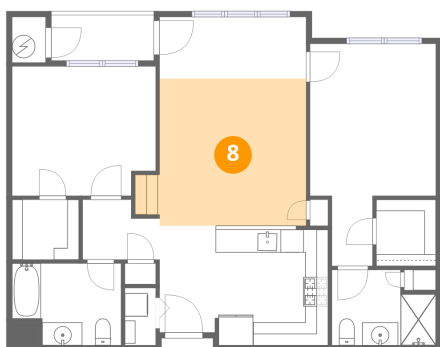
7 Floor 1 - W.I.C.



Dimensions: 5'9" x 5'2"
Area: 30 sq. ft
Counted as living area: Yes

Heated: Yes
Finished: Yes
Enclosed: Yes
Contiguous: Yes
Permitted: Yes
Wet space: No
Addition: No
Conversion: No

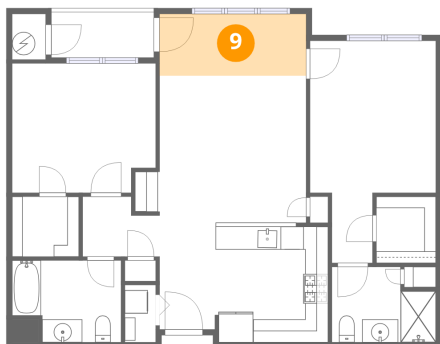
8 Floor 1 - Living Room



Dimensions: 14'11" x 12'9"
Area: 190 sq. ft
Counted as living area: Yes

Heated: Yes
Finished: Yes
Enclosed: Yes
Contiguous: Yes
Permitted: Yes
Wet space: No
Addition: No
Conversion: No

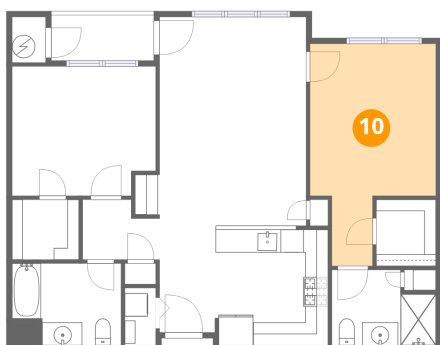
9 Floor 1 - Dining Area



Dimensions: 12'9" x 5'4"
Area: 69 sq. ft
Counted as living area: Yes

Heated: Yes
Finished: Yes
Enclosed: Yes
Contiguous: Yes
Permitted: Yes
Wet space: No
Addition: No
Conversion: No

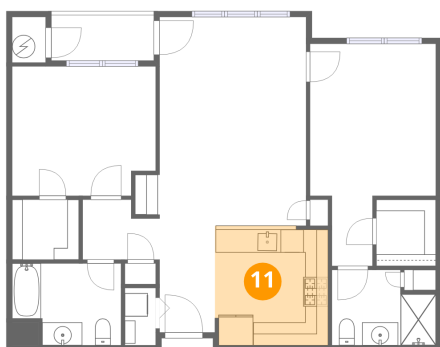
10 Floor 1 - Primary Bedroom



Dimensions: 10'11" x 19'4"
Area: 211 sq. ft
Counted as living area: Yes

Heated: Yes
Finished: Yes
Enclosed: Yes
Contiguous: Yes
Permitted: Yes
Wet space: No
Addition: No
Conversion: No

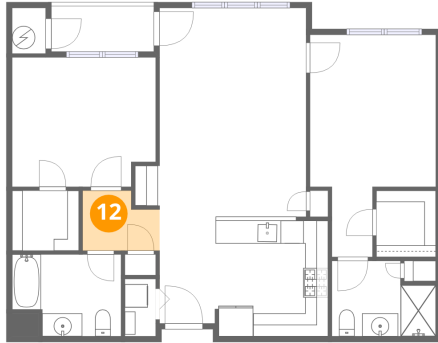
11 Floor 1 - Kitchen



Dimensions: 9'10" x 10'5"
Area: 102 sq. ft
Counted as living area: Yes

Heated: Yes
Finished: Yes
Enclosed: Yes
Contiguous: Yes
Permitted: Yes
Wet space: No
Addition: No
Conversion: No

12 Floor 1 - Hall



Dimensions: 6'8" x 5'3"
Area: 35 sq. ft
Counted as living area: Yes

Heated: Yes
Finished: Yes
Enclosed: Yes
Contiguous: Yes
Permitted: Yes
Wet space: No
Addition: No
Conversion: No