

Home data report

65 Windsor Drive, Rocky Mount, Franklin County, Virginia, United States, 24151



Total Area: 1585 sq. ft

Basement: 569 sq. ft, 1st Floor: 777 sq. ft, 2nd Floor: 239 sq. ft

Excluded: Room 52 sq. ft, Garage 160 sq. ft, Walls: 171 sq. ft

Property summary

 **3** Floors

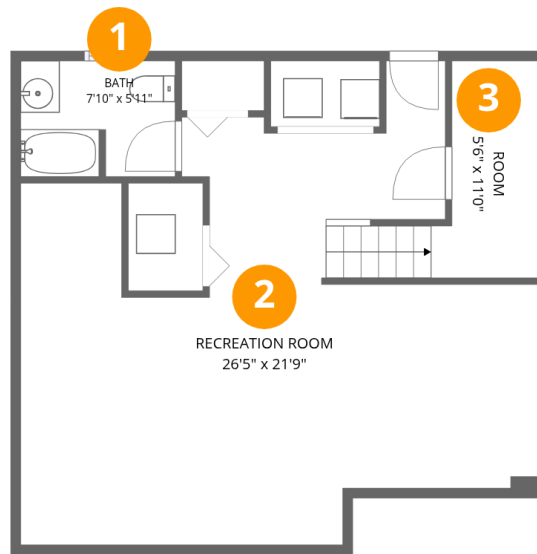
 **3** Bedrooms

 **2** Bathrooms

 **1** Garages

Home data report

65 Windsor Drive, Rocky Mount, Franklin County, Virginia, United States, 24151



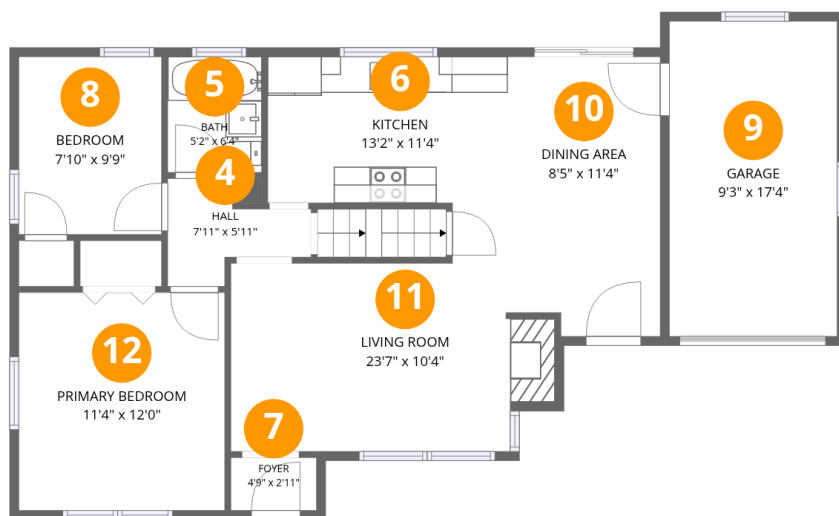
Room dimensions

Floor 1 Below grade

Total:569sqft Excluded: 52sqft

| # | | Dimensions | sqft | Counted as living area |
|---|-----------------|---------------|------------|------------------------|
| 1 | Bath | 7'10" x 5'11" | 45 sq. ft | Yes |
| 2 | Recreation Room | 26'5" x 21'9" | 449 sq. ft | Yes |
| 3 | Room | 5'6" x 11'0" | 52 sq. ft | No |

65 Windsor Drive, Rocky Mount, Franklin County, Virginia, United States, 24151



Room dimensions

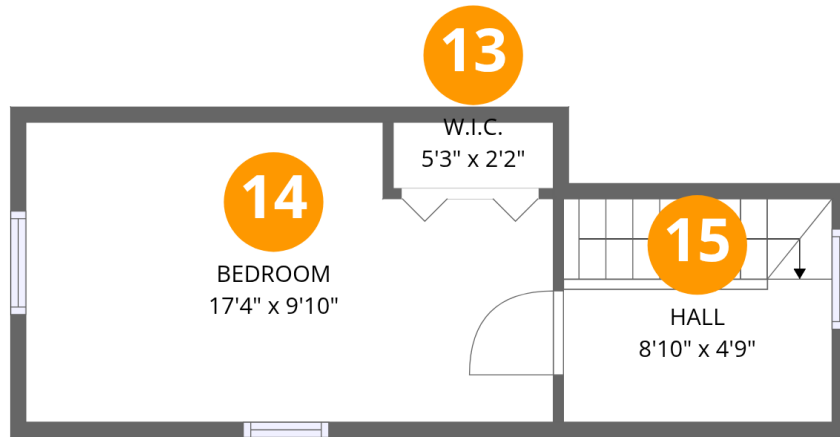
Floor 2

Total:777sqft Excluded: 160sqft

| # | | Dimensions | sqft | Counted as living area |
|----|-----------------|---------------|------------|------------------------|
| 4 | Hall | 7'11" x 5'11" | 32 sq. ft | Yes |
| 5 | Bath | 5'2" x 6'4" | 33 sq. ft | Yes |
| 6 | Kitchen | 13'2" x 11'4" | 116 sq. ft | Yes |
| 7 | Foyer | 4'9" x 2'11" | 14 sq. ft | Yes |
| 8 | Bedroom | 7'10" x 9'9" | 77 sq. ft | Yes |
| 9 | Garage | 9'3" x 17'4" | 160 sq. ft | No |
| 10 | Dining Area | 8'5" x 11'4" | 96 sq. ft | Yes |
| 11 | Living Room | 23'7" x 10'4" | 200 sq. ft | Yes |
| 12 | Primary Bedroom | 11'4" x 12'0" | 136 sq. ft | Yes |

Home data report

65 Windsor Drive, Rocky Mount, Franklin County, Virginia, United States, 24151



Room dimensions

Floor 3

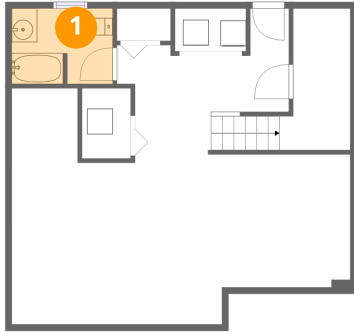
Total:239sqft

Excluded: 0sqft

| # | | Dimensions | sqft | Counted as living area |
|----|---------|---------------|------------|------------------------|
| 13 | W.I.C. | 5'3" x 2'2" | 12 sq. ft | Yes |
| 14 | Bedroom | 17'4" x 9'10" | 158 sq. ft | Yes |
| 15 | Hall | 8'10" x 4'9" | 65 sq. ft | Yes |

65 Windsor Drive, Rocky Mount, Franklin County, Virginia, United States, 24151

1 Floor 1 - Bath



Dimensions: 7'10" x 5'11"
Area: 45 sq. ft
Counted as living area: Yes

Heated: Yes
Finished: Yes
Enclosed: Yes
Contiguous: Yes
Permitted: Yes
Wet space: Yes
Addition: No
Conversion: No

2 Floor 1 - Recreation Room

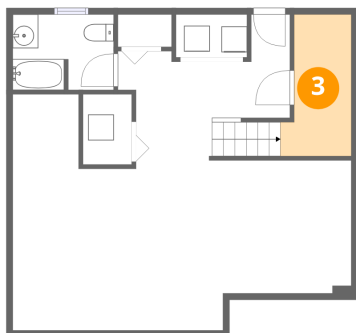


Dimensions: 26'5" x 21'9"
Area: 449 sq. ft
Counted as living area: Yes

Heated: Yes
Finished: Yes
Enclosed: Yes
Contiguous: Yes
Permitted: Yes
Wet space: No
Addition: No
Conversion: No

65 Windsor Drive, Rocky Mount, Franklin County, Virginia, United States, 24151

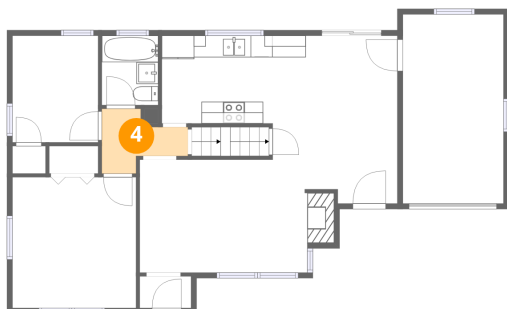
3 Floor 1 - Room



Dimensions: 5'6" x 11'0"
Area: 52 sq. ft
Counted as living area: No

Heated: Yes
Finished: No
Enclosed: Yes
Contiguous: Yes
Permitted: Yes
Wet space: No
Addition: No
Conversion: No

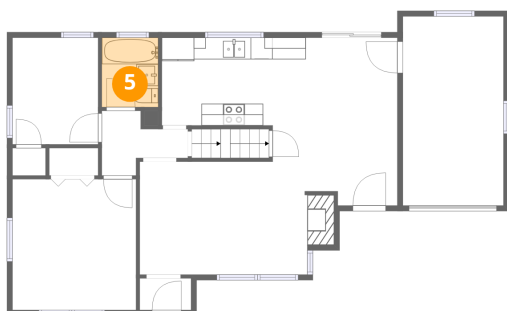
4 Floor 2 - Hall



Dimensions: 7'11" x 5'11"
Area: 32 sq. ft
Counted as living area: Yes

Heated: Yes
Finished: Yes
Enclosed: Yes
Contiguous: Yes
Permitted: Yes
Wet space: No
Addition: No
Conversion: No

5 Floor 2 - Bath

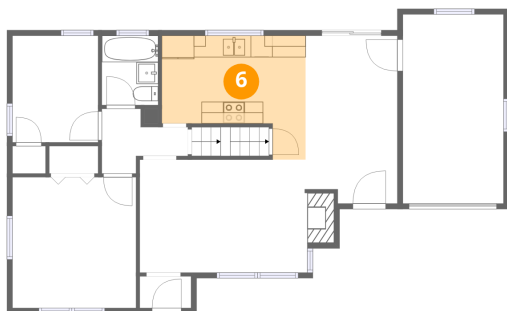


Dimensions: 5'2" x 6'4"
Area: 33 sq. ft
Counted as living area: Yes

Heated: Yes
Finished: Yes
Enclosed: Yes
Contiguous: Yes
Permitted: Yes
Wet space: Yes
Addition: No
Conversion: No

65 Windsor Drive, Rocky Mount, Franklin County, Virginia, United States, 24151

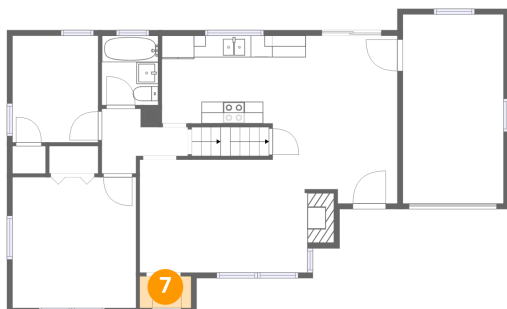
6 Floor 2 - Kitchen



Dimensions: 13'2" x 11'4"
Area: 116 sq. ft
Counted as living area: Yes

Heated: Yes
Finished: Yes
Enclosed: Yes
Contiguous: Yes
Permitted: Yes
Wet space: No
Addition: No
Conversion: No

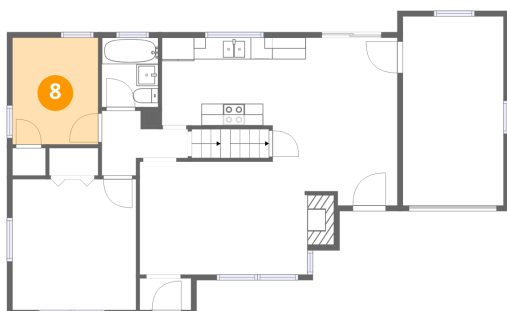
7 Floor 2 - Foyer



Dimensions: 4'9" x 2'11"
Area: 14 sq. ft
Counted as living area: Yes

Heated: Yes
Finished: Yes
Enclosed: Yes
Contiguous: Yes
Permitted: Yes
Wet space: No
Addition: No
Conversion: No

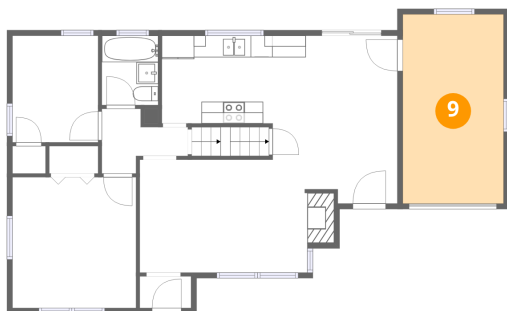
8 Floor 2 - Bedroom



Dimensions: 7'10" x 9'9"
Area: 77 sq. ft
Counted as living area: Yes

Heated: Yes
Finished: Yes
Enclosed: Yes
Contiguous: Yes
Permitted: Yes
Wet space: No
Addition: No
Conversion: No

9 Floor 2 - Garage



Dimensions: 9'3" x 17'4"
Area: 160 sq. ft
Counted as living area: No

Heated: No
Finished: No
Enclosed: Yes
Contiguous: Yes
Permitted: Yes
Wet space: No
Addition: No
Conversion: No

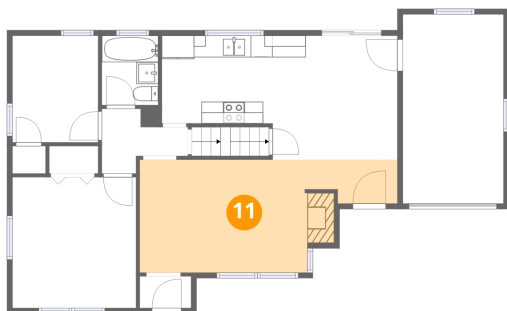
10 Floor 2 - Dining Area



Dimensions: 8'5" x 11'4"
Area: 96 sq. ft
Counted as living area: Yes

Heated: Yes
Finished: Yes
Enclosed: Yes
Contiguous: Yes
Permitted: Yes
Wet space: No
Addition: No
Conversion: No

11 Floor 2 - Living Room

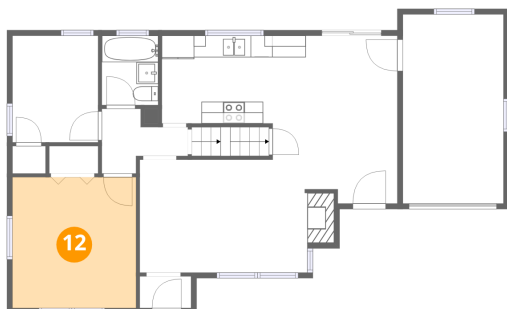


Dimensions: 23'7" x 10'4"
Area: 200 sq. ft
Counted as living area: Yes

Heated: Yes
Finished: Yes
Enclosed: Yes
Contiguous: Yes
Permitted: Yes
Wet space: No
Addition: No
Conversion: No

65 Windsor Drive, Rocky Mount, Franklin County, Virginia, United States, 24151

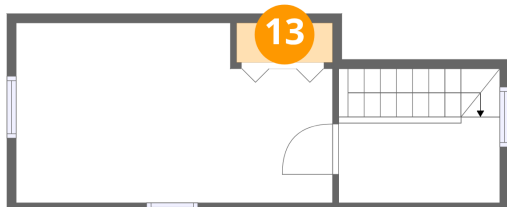
12 Floor 2 - Primary Bedroom



Dimensions: 11'4" x 12'0"
Area: 136 sq. ft
Counted as living area: Yes

Heated: Yes
Finished: Yes
Enclosed: Yes
Contiguous: Yes
Permitted: Yes
Wet space: No
Addition: No
Conversion: No

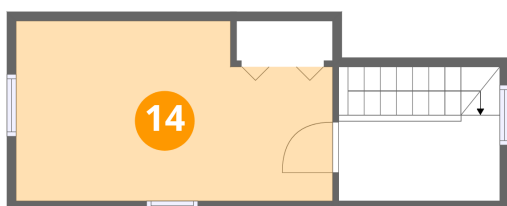
13 Floor 3 - W.I.C.



Dimensions: 5'3" x 2'2"
Area: 12 sq. ft
Counted as living area: Yes

Heated: Yes
Finished: Yes
Enclosed: Yes
Contiguous: Yes
Permitted: Yes
Wet space: No
Addition: No
Conversion: No

14 Floor 3 - Bedroom

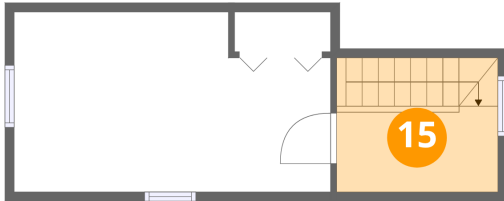


Dimensions: 17'4" x 9'10"
Area: 158 sq. ft
Counted as living area: Yes

Heated: Yes
Finished: Yes
Enclosed: Yes
Contiguous: Yes
Permitted: Yes
Wet space: No
Addition: No
Conversion: No

65 Windsor Drive, Rocky Mount, Franklin County, Virginia, United States, 24151

15 Floor 3 - Hall



Dimensions: 8'10" x 4'9"
Area: 65 sq. ft
Counted as living area: Yes

Heated: Yes
Finished: Yes
Enclosed: Yes
Contiguous: Yes
Permitted: Yes
Wet space: No
Addition: No
Conversion: No