

Home data report

198 Gatewood Blvd, Apalachin, NY, US




Total Area: 4129 sq. ft

Basement: 891 sq. ft, 1st Floor: 1650 sq. ft, 2nd Floor: 1588 sq. ft

Excluded: Storage 350 sq. ft, Utility 352 sq. ft, Garage 485 sq. ft, Balcony 394 sq. ft, Fireplace 13 sq. ft, Open to below 341 sq. ft, Low ceiling 6 sq. ft, Walls: 335 sq. ft

Property summary

 **3** Floors

 **4** Bedrooms

 **3** Bathrooms

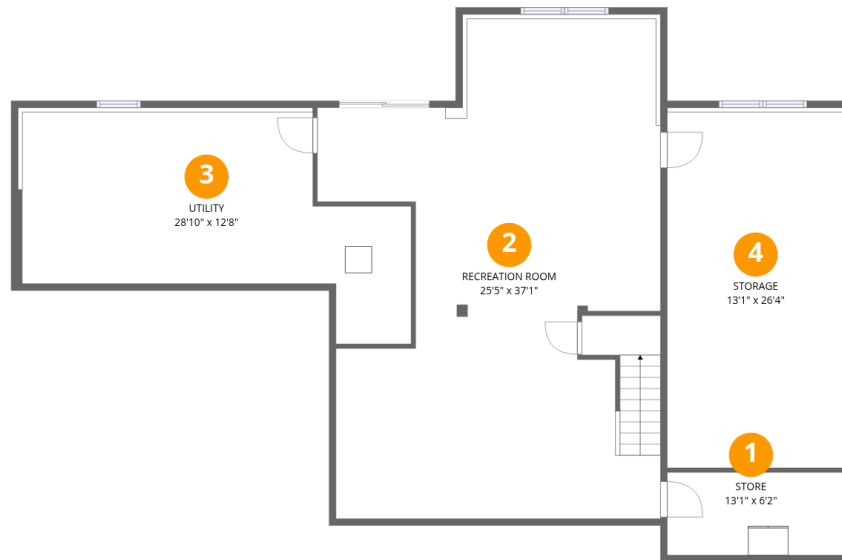
Home data report

198 Gatewood Blvd, Apalachin, NY, US

 **1**
Half baths

 **1**
Garages

198 Gatewood Blvd, Apalachin, NY, US



Room dimensions

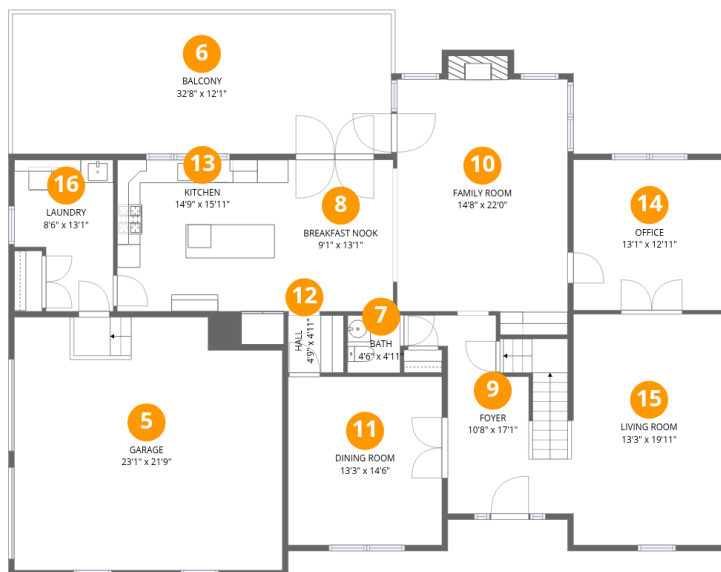
Floor 1 Below grade

Total: 891 sqft

Excluded: 702 sqft

#		Dimensions	sqft	Counted as living area
1	Store	13'1" x 6'2"	81 sq. ft	Yes
2	Recreation Room	25'5" x 37'1"	943 sq. ft	Yes
3	Utility	28'10" x 12'8"	366 sq. ft	No
4	Storage	13'1" x 26'4"	346 sq. ft	No

198 Gatewood Blvd,Apalachin,NY,US



Room dimensions

Floor 2

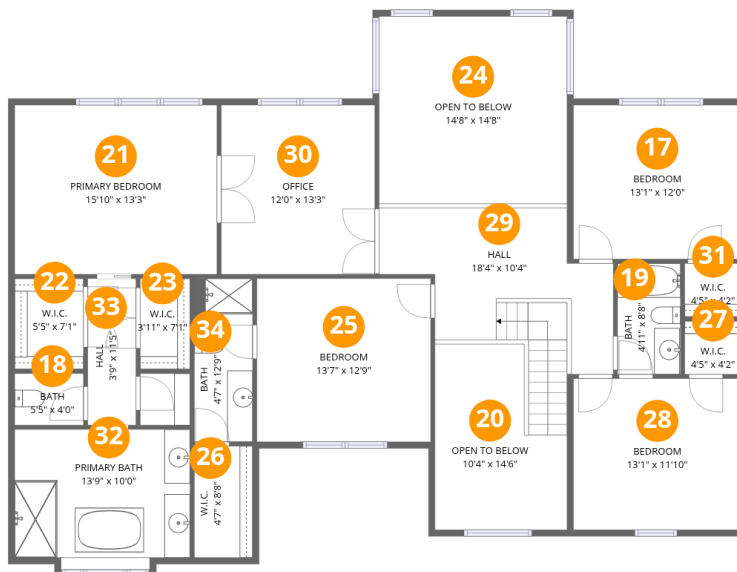
Total:1650sqft Excluded: 892sqft

#		Dimensions	sqft	Counted as living area
5	Garage	23'1" x 21'9"	503 sq. ft	No
6	Balcony	32'8" x 12'1"	394 sq. ft	No
7	Bath	4'6" x 4'11"	22 sq. ft	Yes
8	Breakfast Nook	9'1" x 13'1"	118 sq. ft	Yes
9	Foyer	10'8" x 17'1"	183 sq. ft	Yes
10	Family Room	14'8" x 22'0"	323 sq. ft	Yes
11	Dining Room	13'3" x 14'6"	192 sq. ft	Yes
12	Hall	4'9" x 4'11"	24 sq. ft	Yes
13	Kitchen	14'9" x 15'11"	234 sq. ft	Yes
14	Office	13'1" x 12'11"	170 sq. ft	Yes
15	Living Room	13'3" x 19'11"	264 sq. ft	Yes

Home data report

198 Gatewood Blvd,Apalachin,NY,US

#		Dimensions	sqft	Counted as living area
16	Laundry	8'6" x 13'1"	111 sq. ft	Yes



Room dimensions

Floor 3

Total:1588sqft

Excluded: 347sqft

#		Dimensions	sqft	Counted as living area
17	Bedroom	13'1" x 12'0"	158 sq. ft	Yes
18	Bath	5'5" x 4'0"	22 sq. ft	Yes
19	Bath	4'11" x 8'8"	43 sq. ft	Yes
20	Open To Below	10'4" x 14'6"	150 sq. ft	No
21	Primary Bedroom	15'10" x 13'3"	209 sq. ft	Yes
22	W.I.C.	5'5" x 7'1"	38 sq. ft	Yes
23	W.I.C.	3'11" x 7'1"	28 sq. ft	Yes
24	Open To Below	14'8" x 14'8"	215 sq. ft	No
25	Bedroom	13'7" x 12'9"	173 sq. ft	Yes
26	W.I.C.	4'7" x 8'8"	40 sq. ft	Yes
27	W.I.C.	4'5" x 4'2"	18 sq. ft	Yes

Home data report

198 Gatewood Blvd,Apalachin,NY,US

#		Dimensions	sqft	Counted as living area
28	Bedroom	13'1" x 11'10"	155 sq. ft	Yes
29	Hall	18'4" x 10'4"	188 sq. ft	Yes
30	Office	12'0" x 13'3"	159 sq. ft	Yes
31	W.I.C.	4'5" x 4'2"	18 sq. ft	Yes
32	Primary Bath	13'9" x 10'0"	137 sq. ft	Yes
33	Hall	3'9" x 11'5"	43 sq. ft	Yes
34	Bath	4'7" x 12'9"	58 sq. ft	Yes

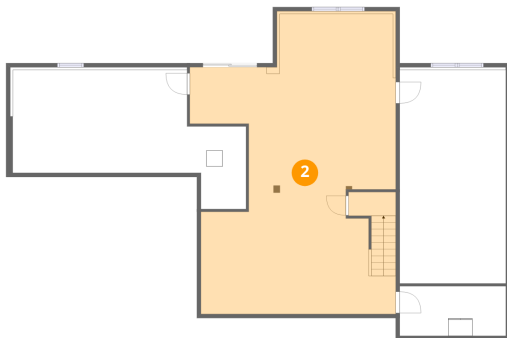
1 Floor 1 - Store



Dimensions: 13'1" x 6'2"
Area: 81 sq. ft
Counted as living area: Yes

Heated: Yes
Finished: Yes
Enclosed: Yes
Contiguous: Yes
Permitted: Yes
Wet space: No
Addition: No
Conversion: No

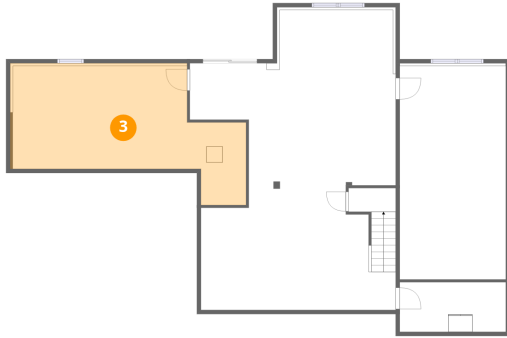
2 Floor 1 - Recreation Room



Dimensions: 25'5" x 37'1"
Area: 943 sq. ft
Counted as living area: Yes

Heated: Yes
Finished: Yes
Enclosed: Yes
Contiguous: Yes
Permitted: Yes
Wet space: No
Addition: No
Conversion: No

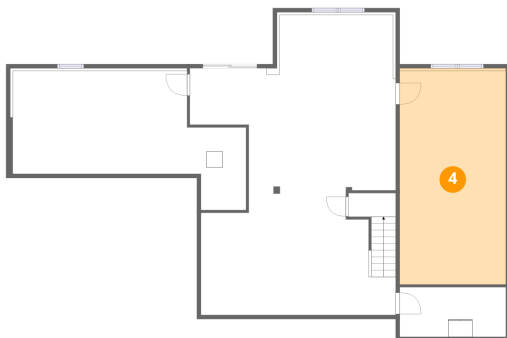
3 Floor 1 - Utility



Dimensions: 28'10" x 12'8"
Area: 366 sq. ft
Counted as living area: No

Heated: Yes
Finished: No
Enclosed: Yes
Contiguous: Yes
Permitted: Yes
Wet space: No
Addition: No
Conversion: No

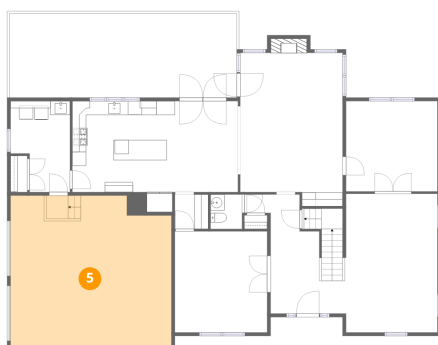
4 Floor 1 - Storage



Dimensions: 13'1" x 26'4"
Area: 346 sq. ft
Counted as living area: No

Heated: No
Finished: No
Enclosed: No
Contiguous: Yes
Permitted: Yes
Wet space: No
Addition: No
Conversion: No

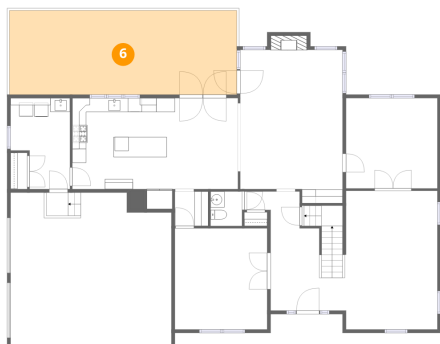
5 Floor 2 - Garage



Dimensions: 23'1" x 21'9"
Area: 503 sq. ft
Counted as living area: No

Heated: No
Finished: No
Enclosed: Yes
Contiguous: Yes
Permitted: Yes
Wet space: No
Addition: No
Conversion: No

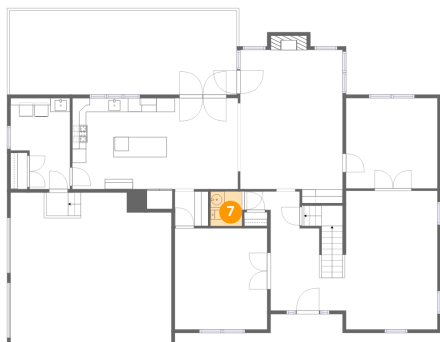
6 Floor 2 - Balcony



Dimensions: 32'8" x 12'1"
Area: 394 sq. ft
Counted as living area: No

Heated: No
Finished: No
Enclosed: No
Contiguous: Yes
Permitted: Yes
Wet space: No
Addition: No
Conversion: No

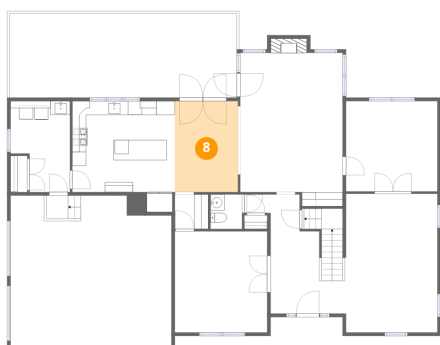
7 Floor 2 - Bath



Dimensions: 4'6" x 4'11"
Area: 22 sq. ft
Counted as living area: Yes

Heated: Yes
Finished: Yes
Enclosed: Yes
Contiguous: Yes
Permitted: Yes
Wet space: Yes
Addition: No
Conversion: No

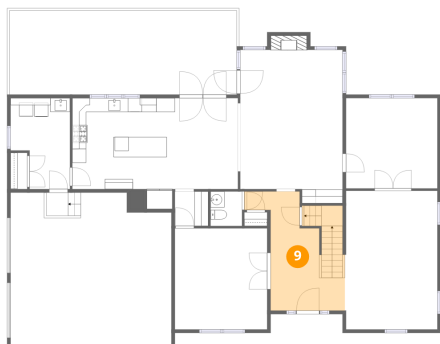
8 Floor 2 - Breakfast Nook



Dimensions: 9'1" x 13'1"
Area: 118 sq. ft
Counted as living area: Yes

Heated: Yes
Finished: Yes
Enclosed: Yes
Contiguous: Yes
Permitted: Yes
Wet space: No
Addition: No
Conversion: No

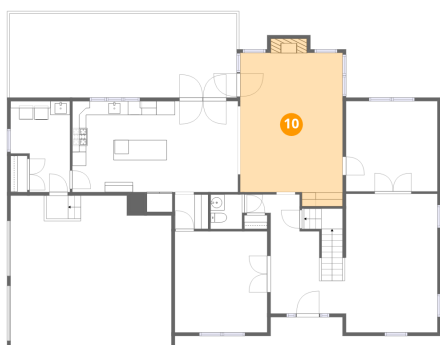
9 Floor 2 - Foyer



Dimensions: 10'8" x 17'1"
Area: 183 sq. ft
Counted as living area: Yes

Heated: Yes
Finished: Yes
Enclosed: Yes
Contiguous: Yes
Permitted: Yes
Wet space: No
Addition: No
Conversion: No

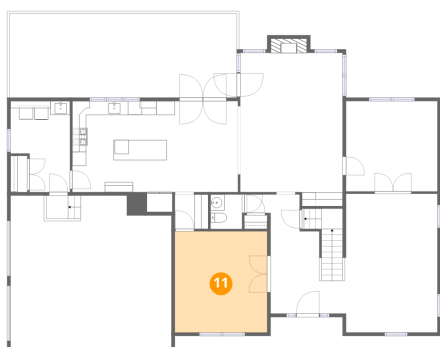
10 Floor 2 - Family Room



Dimensions: 14'8" x 22'0"
Area: 323 sq. ft
Counted as living area: Yes

Heated: Yes
Finished: Yes
Enclosed: Yes
Contiguous: Yes
Permitted: Yes
Wet space: No
Addition: No
Conversion: No

11 Floor 2 - Dining Room



Dimensions: 13'3" x 14'6"
Area: 192 sq. ft
Counted as living area: Yes

Heated: Yes
Finished: Yes
Enclosed: Yes
Contiguous: Yes
Permitted: Yes
Wet space: No
Addition: No
Conversion: No

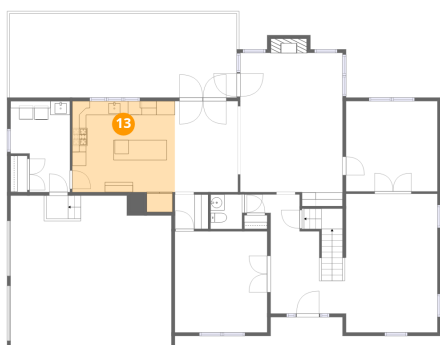
12 Floor 2 - Hall



Dimensions: 4'9" x 4'11"
Area: 24 sq. ft
Counted as living area: Yes

Heated: Yes
Finished: Yes
Enclosed: Yes
Contiguous: Yes
Permitted: Yes
Wet space: No
Addition: No
Conversion: No

13 Floor 2 - Kitchen



Dimensions: 14'9" x 15'11"
Area: 234 sq. ft
Counted as living area: Yes

Heated: Yes
Finished: Yes
Enclosed: Yes
Contiguous: Yes
Permitted: Yes
Wet space: No
Addition: No
Conversion: No

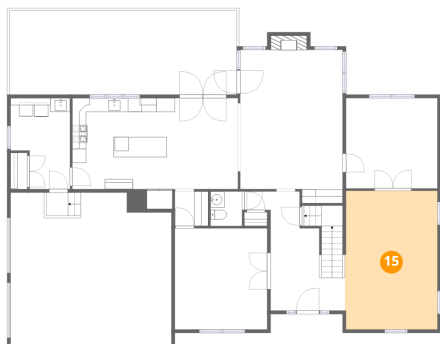
14 Floor 2 - Office



Dimensions: 13'1" x 12'11"
Area: 170 sq. ft
Counted as living area: Yes

Heated: Yes
Finished: Yes
Enclosed: Yes
Contiguous: Yes
Permitted: Yes
Wet space: No
Addition: No
Conversion: No

15 Floor 2 - Living Room



Dimensions: 13'3" x 19'11"
Area: 264 sq. ft
Counted as living area: Yes

Heated: Yes
Finished: Yes
Enclosed: Yes
Contiguous: Yes
Permitted: Yes
Wet space: No
Addition: No
Conversion: No

16 Floor 2 - Laundry



Dimensions: 8'6" x 13'1"
Area: 111 sq. ft
Counted as living area: Yes

Heated: Yes
Finished: Yes
Enclosed: Yes
Contiguous: Yes
Permitted: Yes
Wet space: No
Addition: No
Conversion: No

17 Floor 3 - Bedroom



Dimensions: 13'1" x 12'0"
Area: 158 sq. ft
Counted as living area: Yes

Heated: Yes
Finished: Yes
Enclosed: Yes
Contiguous: Yes
Permitted: Yes
Wet space: No
Addition: No
Conversion: No

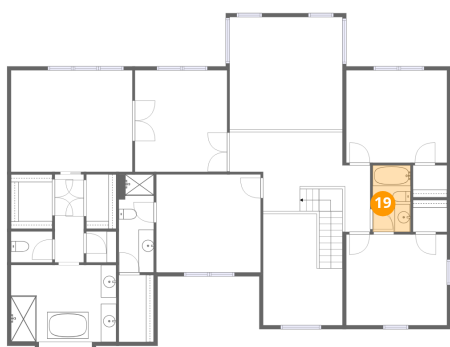
18 Floor 3 - Bath



Dimensions: 5'5" x 4'0"
Area: 22 sq. ft
Counted as living area: Yes

Heated: Yes
Finished: Yes
Enclosed: Yes
Contiguous: Yes
Permitted: Yes
Wet space: Yes
Addition: No
Conversion: No

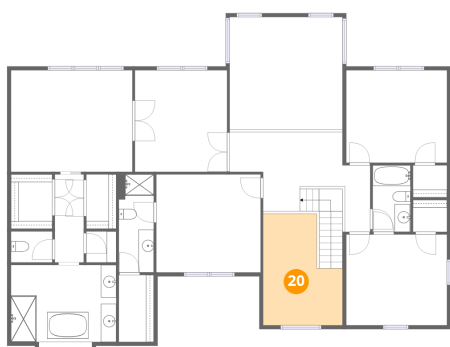
19 Floor 3 - Bath



Dimensions: 4'11" x 8'8"
Area: 43 sq. ft
Counted as living area: Yes

Heated: Yes
Finished: Yes
Enclosed: Yes
Contiguous: Yes
Permitted: Yes
Wet space: Yes
Addition: No
Conversion: No

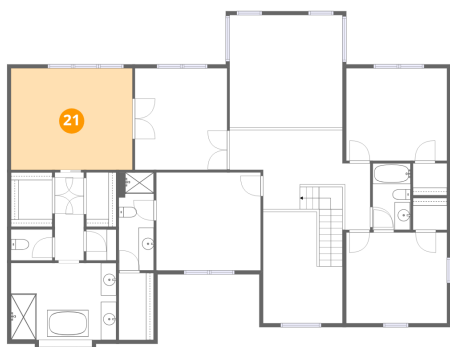
20 Floor 3 - Open To Below



Dimensions: 10'4" x 14'6"
Area: 150 sq. ft
Counted as living area: No

Heated: No
Finished: No
Enclosed: No
Contiguous: Yes
Permitted: No
Wet space: No
Addition: No
Conversion: No

21 Floor 3 - Primary Bedroom



Dimensions: 15'10" x 13'3"
Area: 209 sq. ft
Counted as living area: Yes

Heated: Yes
Finished: Yes
Enclosed: Yes
Contiguous: Yes
Permitted: Yes
Wet space: No
Addition: No
Conversion: No

22 Floor 3 - W.I.C.



Dimensions: 5'5" x 7'1"
Area: 38 sq. ft
Counted as living area: Yes

Heated: Yes
Finished: Yes
Enclosed: Yes
Contiguous: Yes
Permitted: Yes
Wet space: No
Addition: No
Conversion: No

23 Floor 3 - W.I.C.



Dimensions: 3'11" x 7'1"
Area: 28 sq. ft
Counted as living area: Yes

Heated: Yes
Finished: Yes
Enclosed: Yes
Contiguous: Yes
Permitted: Yes
Wet space: No
Addition: No
Conversion: No

24 Floor 3 - Open To Below



Dimensions: 14'8" x 14'8"
Area: 215 sq. ft
Counted as living area: No

Heated: No
Finished: No
Enclosed: No
Contiguous: Yes
Permitted: No
Wet space: No
Addition: No
Conversion: No

25 Floor 3 - Bedroom



Dimensions: 13'7" x 12'9"
Area: 173 sq. ft
Counted as living area: Yes

Heated: Yes
Finished: Yes
Enclosed: Yes
Contiguous: Yes
Permitted: Yes
Wet space: No
Addition: No
Conversion: No

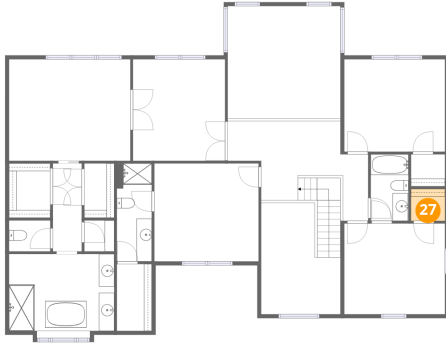
26 Floor 3 - W.I.C.



Dimensions: 4'7" x 8'8"
Area: 40 sq. ft
Counted as living area: Yes

Heated: Yes
Finished: Yes
Enclosed: Yes
Contiguous: Yes
Permitted: Yes
Wet space: No
Addition: No
Conversion: No

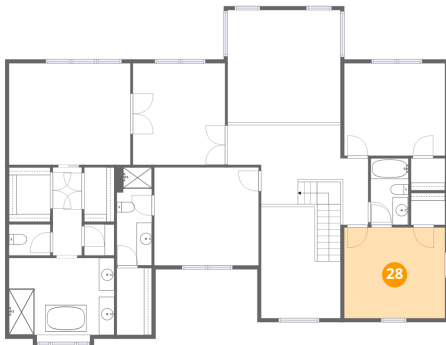
27 Floor 3 - W.I.C.



Dimensions: 4'5" x 4'2"
Area: 18 sq. ft
Counted as living area: Yes

Heated: Yes
Finished: Yes
Enclosed: Yes
Contiguous: Yes
Permitted: Yes
Wet space: No
Addition: No
Conversion: No

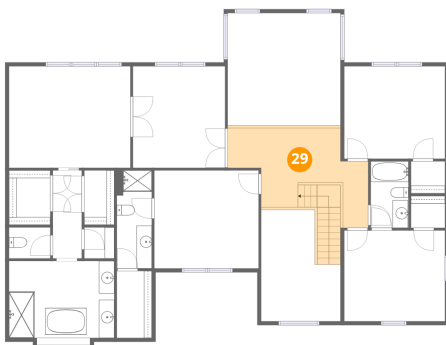
28 Floor 3 - Bedroom



Dimensions: 13'1" x 11'10"
Area: 155 sq. ft
Counted as living area: Yes

Heated: Yes
Finished: Yes
Enclosed: Yes
Contiguous: Yes
Permitted: Yes
Wet space: No
Addition: No
Conversion: No

29 Floor 3 - Hall



Dimensions: 18'4" x 10'4"
Area: 188 sq. ft
Counted as living area: Yes

Heated: Yes
Finished: Yes
Enclosed: Yes
Contiguous: Yes
Permitted: Yes
Wet space: No
Addition: No
Conversion: No

30 Floor 3 - Office



Dimensions: 12'0" x 13'3"
Area: 159 sq. ft
Counted as living area: Yes

Heated: Yes
Finished: Yes
Enclosed: Yes
Contiguous: Yes
Permitted: Yes
Wet space: No
Addition: No
Conversion: No

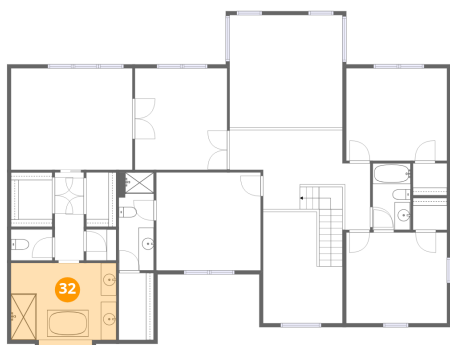
31 Floor 3 - W.I.C.



Dimensions: 4'5" x 4'2"
Area: 18 sq. ft
Counted as living area: Yes

Heated: Yes
Finished: Yes
Enclosed: Yes
Contiguous: Yes
Permitted: Yes
Wet space: No
Addition: No
Conversion: No

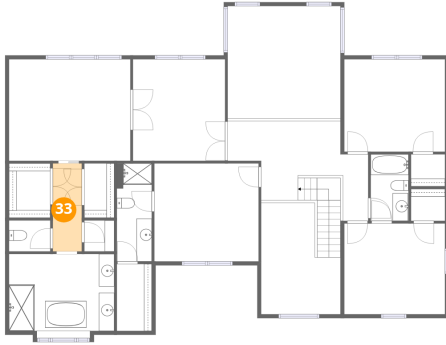
32 Floor 3 - Primary Bath



Dimensions: 13'9" x 10'0"
Area: 137 sq. ft
Counted as living area: Yes

Heated: Yes
Finished: Yes
Enclosed: Yes
Contiguous: Yes
Permitted: Yes
Wet space: Yes
Addition: No
Conversion: No

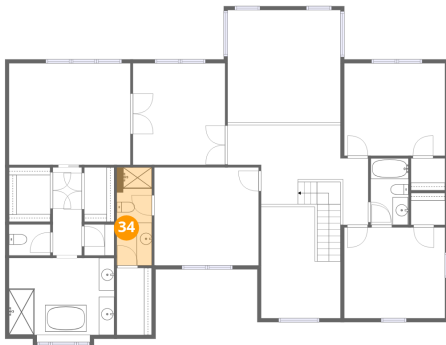
33 Floor 3 - Hall



Dimensions: 3'9" x 11'5"
Area: 43 sq. ft
Counted as living area: Yes

Heated: Yes
Finished: Yes
Enclosed: Yes
Contiguous: Yes
Permitted: Yes
Wet space: No
Addition: No
Conversion: No

34 Floor 3 - Bath



Dimensions: 4'7" x 12'9"
Area: 58 sq. ft
Counted as living area: Yes

Heated: Yes
Finished: Yes
Enclosed: Yes
Contiguous: Yes
Permitted: Yes
Wet space: Yes
Addition: No
Conversion: No