

# 26-45500 Campus Drive

Chilliwack, BC V2R 6E9

Lower Level Area: 381 SQ.FT.

Main Level Area: 620 SQ.FT.

Upper Level Area: 650 SQ.FT.

**Total Area 1,651 SQ.FT.**

4



BEDROOMS

4

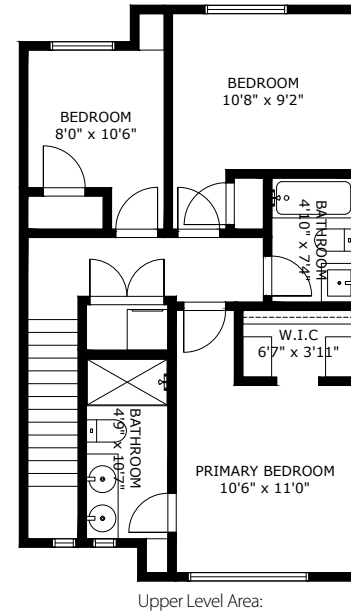
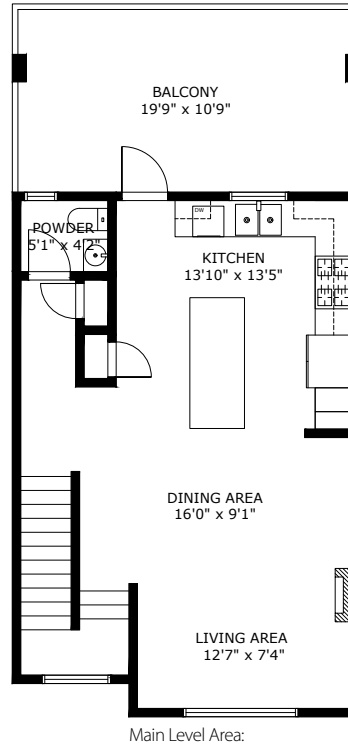
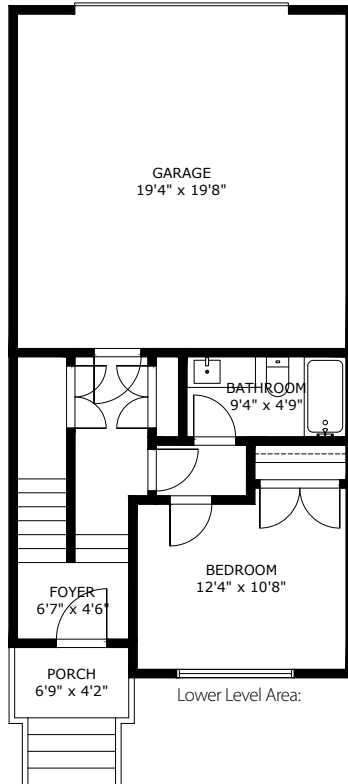


BATHROOMS

1,651



TOTAL SQ.FT.



## 26-45500 CAMPUS DR CHILLIWACK BC V2R 6E9

Measurements are approximate and may not be to scale. Gross measurements provided by agent.  
The floor plan illustration is not suitable for construction/architectural purposes.  
This communication is not intended to cause or induce breach of an existing agency agreement

**3D IMMERSIVE**  
Tours Photos Floor Plans

Professionally measured by 3D Immersive Marketing Ltd.

Lead Floor Planner: *Simon Alexander*  
Quality Assurance: *Francine Graham*