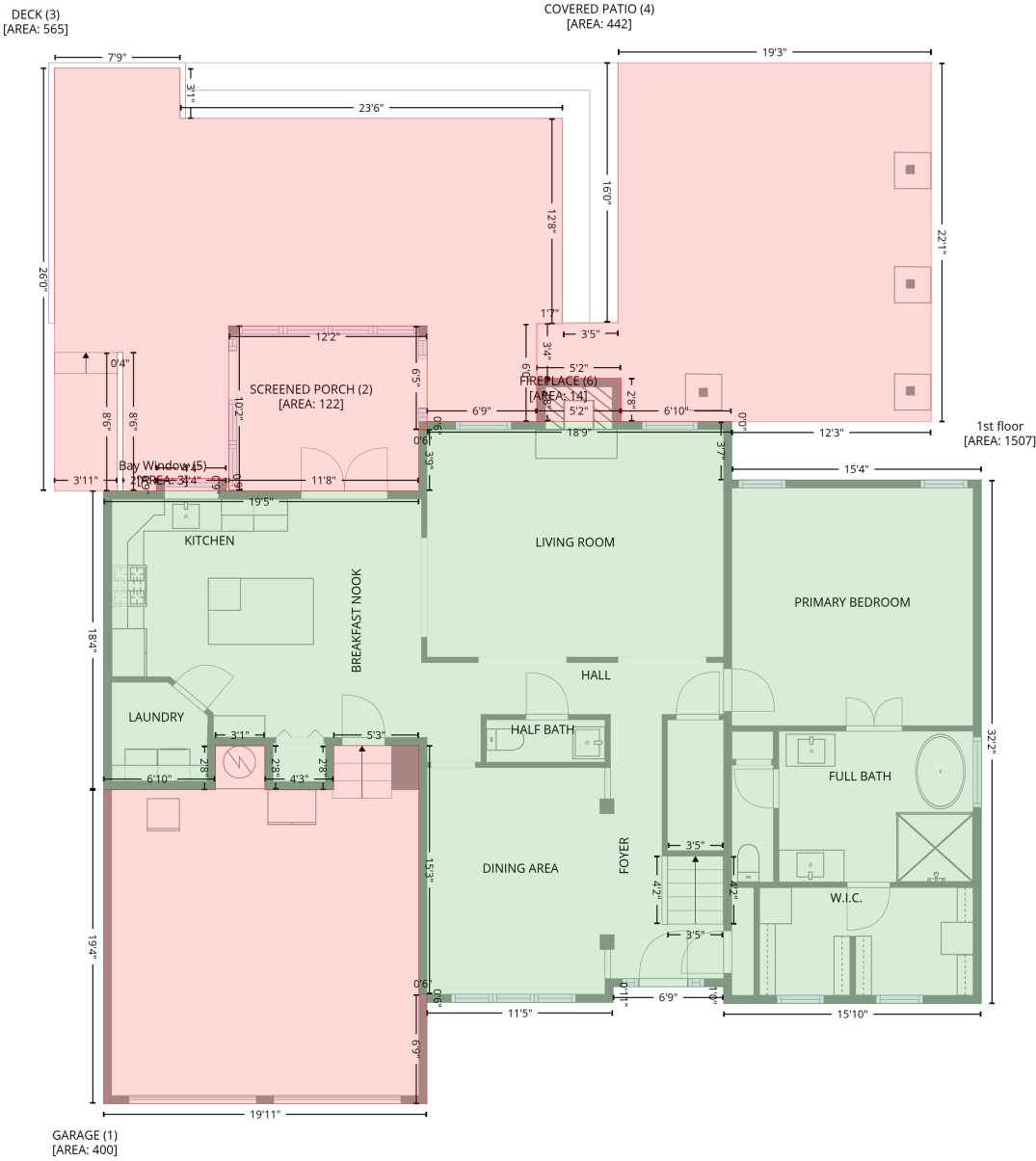


112 Summer Hill Road, Simpsonville, Greenville County, South Carolina, United States, 29681

Gross Living Area: 2339 sq. ft

Level 1



112 Summer Hill Road, Simpsonville, Greenville County, South Carolina, United States, 29681

Gross Living Area: 2339 sq. ft

Level 1

Space	Area (sq. ft)	Calculation <small>Coordinate Polygon Area Algorithm using inches</small>
1st floor (Living area)	1507	$-\left((607.9 + 607.9) * (358.4 - 401.5) + (607.9 + 792) * (401.5 - 401.5) + (792 + 792) * (401.5 - 787.7) + (792 + 601.9) * (787.7 - 787.7) + (601.9 + 601.9) * (787.7 - 775.4) + (601.9 + 520.4) * (775.4 - 775.4) + (520.4 + 520.4) * (775.4 - 786.9) + (520.4 + 383) * (786.9 - 786.9) + (383 + 383) * (786.9 - 780.9) + (383 + 377) * (780.9 - 780.9) + (377 + 377) * (780.9 - 597.5) + (377 + 314.2) * (597.5 - 597.5) + (314.2 + 314.2) * (597.5 - 630) + (314.2 + 263.5) * (630 - 630) + (263.5 + 263.5) * (630 - 597.5) + (263.5 + 226.9) * (597.5 - 597.5) + (226.9 + 226.9) * (597.5 - 630) + (226.9 + 144.4) * (630 - 630) + (144.4 + 144.4) * (630 - 409.6) + (144.4 + 377) * (409.6 - 409.6) + (377 + 377) * (409.6 - 364.4) + (377 + 383) * (364.4 - 364.4) + (383 + 383) * (364.4 - 358.4) + (383 + 607.9) * (358.4 - 358.4)\right) * 0.5 * 0.00694$
GARAGE (Non-living area)	400	$-\left((263.5 + 263.5) * (597.5 - 630) + (263.5 + 314.2) * (630 - 630) + (314.2 + 314.2) * (630 - 597.5) + (314.2 + 377) * (597.5 - 597.5) + (377 + 377) * (597.5 - 780.9) + (377 + 383) * (780.9 - 780.9) + (383 + 383) * (780.9 - 861.7) + (383 + 144.4) * (861.7 - 861.7) + (144.4 + 144.4) * (861.7 - 630) + (144.4 + 226.9) * (630 - 630) + (226.9 + 226.9) * (630 - 597.5) + (226.9 + 263.5) * (597.5 - 597.5)\right) * 0.5 * 0.00694$
SCREENED PORCH (Non-living area)	122	$-\left((383 + 383) * (287.9 - 364.4) + (383 + 377) * (364.4 - 364.4) + (377 + 377) * (364.4 - 409.6) + (377 + 236.7) * (409.6 - 409.6) + (236.7 + 236.7) * (409.6 - 287.9) + (236.7 + 383) * (287.9 - 287.9)\right) * 0.5 * 0.00694$
DECK (Non-living area)	565	$-\left((200.9 + 200.9) * (97.7 - 134.8) + (200.9 + 483.1) * (134.8 - 134.8) + (483.1 + 483.1) * (134.8 - 286.3) + (483.1 + 464) * (286.3 - 286.3) + (464 + 464) * (286.3 - 358.4) + (464 + 383) * (358.4 - 358.4) + (383 + 383) * (358.4 - 287.9) + (383 + 236.7) * (287.9 - 287.9) + (236.7 + 236.7) * (287.9 - 409.6) + (236.7 + 235.2) * (409.6 - 400.6) + (235.2 + 183.5) * (400.6 - 400.6) + (183.5 + 183.5) * (400.6 - 409.6) + (183.5 + 158.7) * (409.6 - 409.6) + (158.7 + 158.7) * (409.6 - 307.5) + (158.7 + 154.7) * (307.5 - 307.5) + (154.7 + 154.7) * (307.5 - 409.6) + (154.7 + 108) * (409.6 - 409.6) + (108 + 108) * (409.6 - 97.7) + (108 + 200.9) * (97.7 - 97.7)\right) * 0.5 * 0.00694$
COVERED PATIO (Non-living area)	442	$-\left((755.1 + 755.1) * (93.7 - 358.6) + (755.1 + 607.9) * (358.6 - 358.6) + (607.9 + 607.9) * (358.6 - 358.4) + (607.9 + 526.1) * (358.4 - 358.4) + (526.1 + 526.1) * (358.4 - 326.6) + (526.1 + 464) * (326.6 - 326.6) + (464 + 464) * (326.6 - 286.2) + (464 + 483.2) * (286.2 - 286.2) + (483.2 + 523.9) * (286.2 - 285.4) + (523.9 + 523.9) * (285.4 - 93.7) + (523.9 + 755.1) * (93.7 - 93.7)\right) * 0.5 * 0.00694$
Bay Window (Non-living area)	3	$-\left((235.2 + 235.2) * (400.6 - 409.6) + (235.2 + 183.5) * (409.6 - 409.6) + (183.5 + 183.5) * (409.6 - 400.6) + (183.5 + 235.2) * (400.6 - 400.6)\right) * 0.5 * 0.00694$
FIREPLACE (Non-living area)	14	$-\left((526.1 + 526.1) * (326.6 - 358.4) + (526.1 + 464) * (358.4 - 358.4) + (464 + 464) * (358.4 - 326.6) + (464 + 526.1) * (326.6 - 326.6)\right) * 0.5 * 0.00694$

112 Summer Hill Road, Simpsonville, Greenville County, South Carolina, United States, 29681

Gross Living Area: 2339 sq. ft

Level 2

Space	Area (sq. ft)	Calculation <small>Coordinate Polygon Area Algorithm using inches</small>
OPEN TO BELOW (Non-living area)	68	$-((556.5 + 556.5) * (578.6 - 729.6) + (556.5 + 607.9) * (729.6 - 729.6) + (607.9 + 607.9) * (729.6 - 775.4) + (607.9 + 520.4) * (775.4 - 775.4) + (520.4 + 518.4) * (775.4 - 769.4) + (518.4 + 518.4) * (769.4 - 578.6) + (518.4 + 556.5) * (578.6 - 578.6)) * 0.5 * 0.00694$
OPEN TO BELOW (Non-living area)	274	$-((607.9 + 607.9) * (358.4 - 532.2) + (607.9 + 383) * (532.2 - 532.2) + (383 + 383) * (532.2 - 415.6) + (383 + 377) * (415.6 - 409.6) + (377 + 377) * (409.6 - 358.4) + (377 + 607.9) * (358.4 - 358.4)) * 0.5 * 0.00694$