

# Home data report

## 228 Cross Creek Dr, Mt Airy, NC, US



**Total Area: 2147 sq. ft**

Basement: 0 sq. ft, 1st Floor: 985 sq. ft, 2nd Floor: 1162 sq. ft

Excluded: Basement 953 sq. ft, Fireplace 19 sq. ft, Garage 513 sq. ft, Deck 483 sq. ft

### Property summary

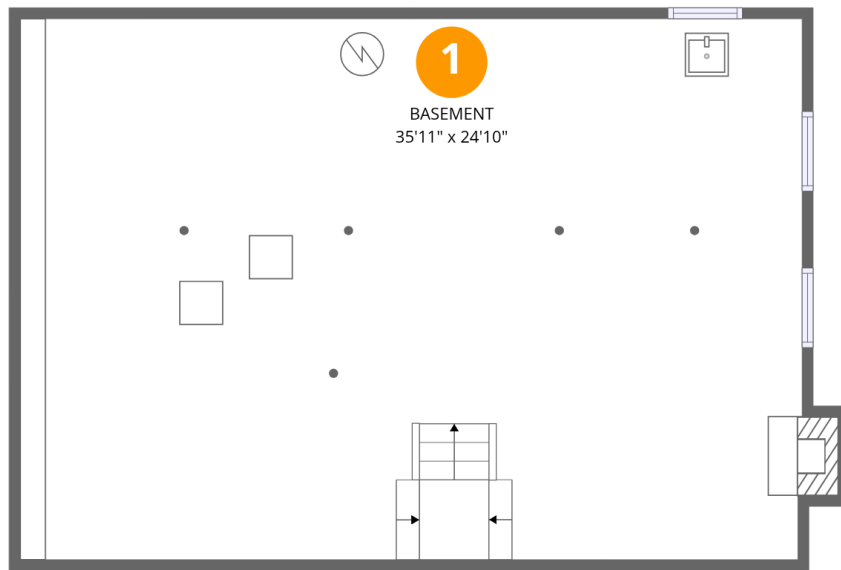
**3** Floors

**3** Bedrooms

**3** Bathrooms

**1** Garages

# 228 Cross Creek Dr, Mt Airy, NC, US



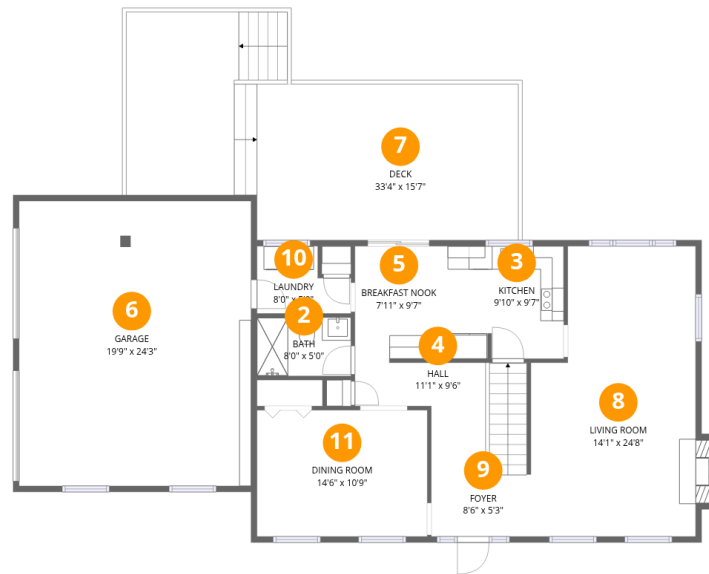
## Room dimensions

Floor 1 Below grade

Total: 0 sqft

Excluded: 961 sqft

| # |          | Dimensions      | sqft       | Counted as living area |
|---|----------|-----------------|------------|------------------------|
| 1 | Basement | 35'11" x 24'10" | 897 sq. ft | No                     |



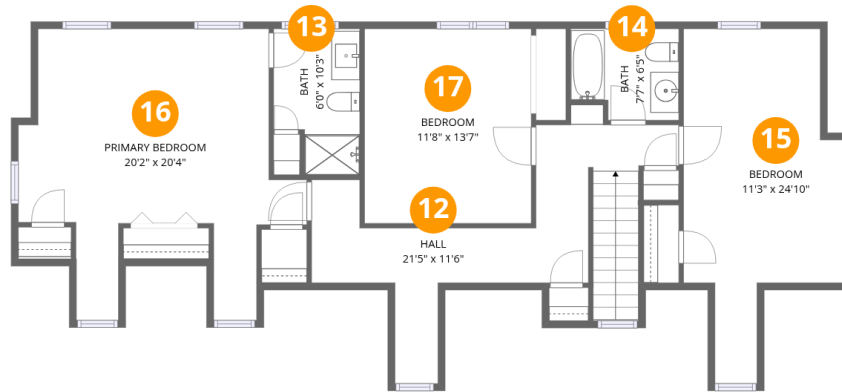
## Room dimensions

Floor 2

Total: 985 sqft

Excluded: 1007 sqft

| #  |                | Dimensions    | sqft       | Counted as living area |
|----|----------------|---------------|------------|------------------------|
| 2  | Bath           | 8'0" x 5'0"   | 40 sq. ft  | Yes                    |
| 3  | Kitchen        | 9'10" x 9'7"  | 94 sq. ft  | Yes                    |
| 4  | Hall           | 11'1" x 9'6"  | 102 sq. ft | Yes                    |
| 5  | Breakfast Nook | 7'11" x 9'7"  | 76 sq. ft  | Yes                    |
| 6  | Garage         | 19'9" x 24'3" | 478 sq. ft | No                     |
| 7  | Deck           | 33'4" x 15'7" | 483 sq. ft | No                     |
| 8  | Living Room    | 14'1" x 24'8" | 324 sq. ft | Yes                    |
| 9  | Foyer          | 8'6" x 5'3"   | 45 sq. ft  | Yes                    |
| 10 | Laundry        | 8'0" x 5'9"   | 38 sq. ft  | Yes                    |
| 11 | Dining Room    | 14'6" x 10'9" | 156 sq. ft | Yes                    |



## Room dimensions

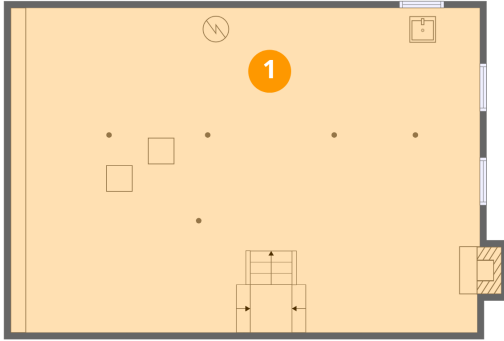
Floor 3

Total: 1162 sqft

Excluded: 0 sqft

| #  |                 | Dimensions     | sqft       | Counted as living area |
|----|-----------------|----------------|------------|------------------------|
| 12 | Hall            | 21'5" x 11'6"  | 189 sq. ft | Yes                    |
| 13 | Bath            | 6'0" x 10'3"   | 55 sq. ft  | Yes                    |
| 14 | Bath            | 7'7" x 6'5"    | 45 sq. ft  | Yes                    |
| 15 | Bedroom         | 11'3" x 24'10" | 207 sq. ft | Yes                    |
| 16 | Primary Bedroom | 20'2" x 20'4"  | 278 sq. ft | Yes                    |
| 17 | Bedroom         | 11'8" x 13'7"  | 159 sq. ft | Yes                    |

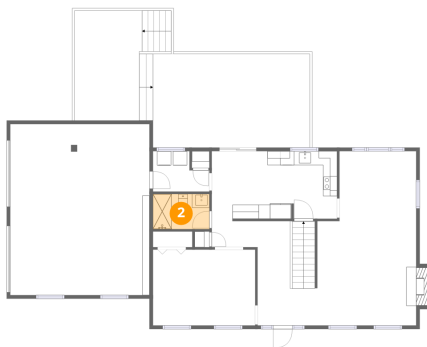
## 1 Floor 1 - Basement



Dimensions: 35'11" x 24'10"  
Area: 897 sq. ft  
Counted as living area: No

Heated: Yes  
Finished: No  
Enclosed: Yes  
Contiguous: Yes  
Permitted: Yes  
Wet space: No  
Addition: No  
Conversion: No

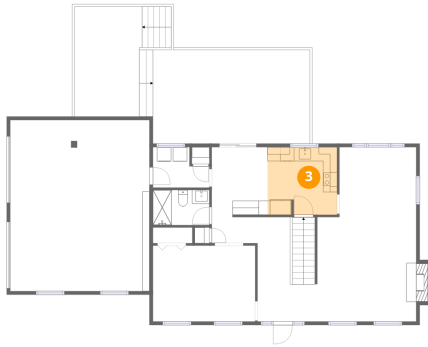
## 2 Floor 2 - Bath



Dimensions: 8'0" x 5'0"  
Area: 40 sq. ft  
Counted as living area: Yes

Heated: Yes  
Finished: Yes  
Enclosed: Yes  
Contiguous: Yes  
Permitted: Yes  
Wet space: Yes  
Addition: No  
Conversion: No

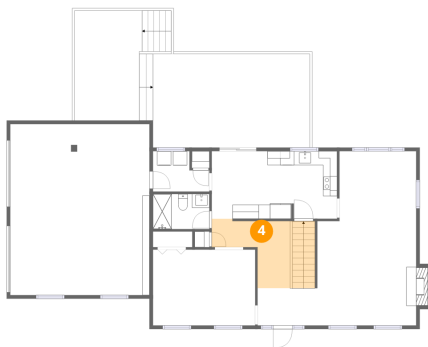
### 3 Floor 2 - Kitchen



Dimensions: 9'10" x 9'7"  
Area: 94 sq. ft  
Counted as living area: Yes

Heated: Yes  
Finished: Yes  
Enclosed: Yes  
Contiguous: Yes  
Permitted: Yes  
Wet space: No  
Addition: No  
Conversion: No

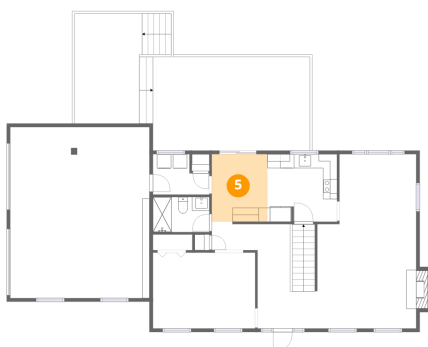
### 4 Floor 2 - Hall



Dimensions: 11'1" x 9'6"  
Area: 102 sq. ft  
Counted as living area: Yes

Heated: Yes  
Finished: Yes  
Enclosed: Yes  
Contiguous: Yes  
Permitted: Yes  
Wet space: No  
Addition: No  
Conversion: No

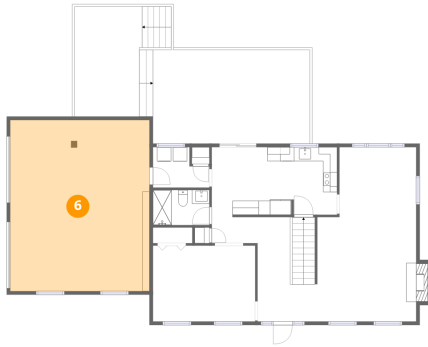
### 5 Floor 2 - Breakfast Nook



Dimensions: 7'11" x 9'7"  
Area: 76 sq. ft  
Counted as living area: Yes

Heated: Yes  
Finished: Yes  
Enclosed: Yes  
Contiguous: Yes  
Permitted: Yes  
Wet space: No  
Addition: No  
Conversion: No

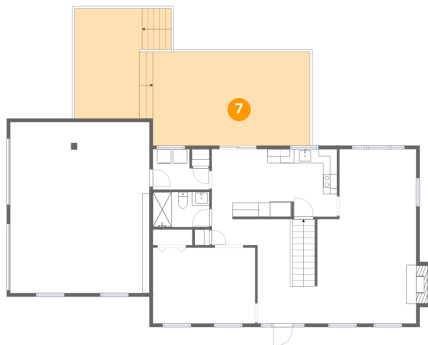
## 6 Floor 2 - Garage



Dimensions: 19'9" x 24'3"  
Area: 478 sq. ft  
Counted as living area: No

Heated: No  
Finished: No  
Enclosed: Yes  
Contiguous: Yes  
Permitted: Yes  
Wet space: No  
Addition: No  
Conversion: No

## 7 Floor 2 - Deck



Dimensions: 33'4" x 15'7"  
Area: 483 sq. ft  
Counted as living area: No

Heated: No  
Finished: No  
Enclosed: No  
Contiguous: Yes  
Permitted: Yes  
Wet space: No  
Addition: No  
Conversion: No

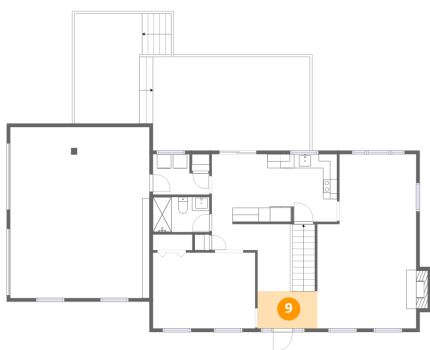
## 8 Floor 2 - Living Room



Dimensions: 14'1" x 24'8"  
Area: 324 sq. ft  
Counted as living area: Yes

Heated: Yes  
Finished: Yes  
Enclosed: Yes  
Contiguous: Yes  
Permitted: Yes  
Wet space: No  
Addition: No  
Conversion: No

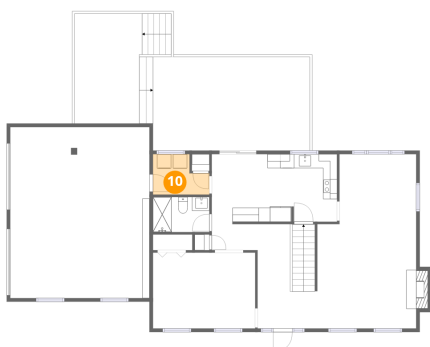
### 9 Floor 2 - Foyer



Dimensions: 8'6" x 5'3"  
Area: 45 sq. ft  
Counted as living area: Yes

Heated: Yes  
Finished: Yes  
Enclosed: Yes  
Contiguous: Yes  
Permitted: Yes  
Wet space: No  
Addition: No  
Conversion: No

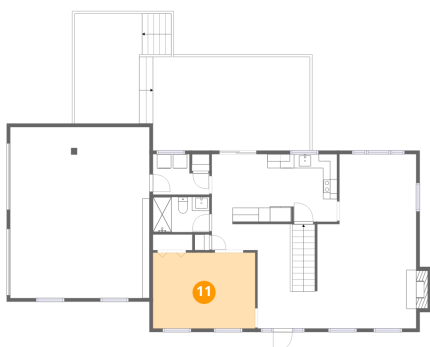
### 10 Floor 2 - Laundry



Dimensions: 8'0" x 5'9"  
Area: 38 sq. ft  
Counted as living area: Yes

Heated: Yes  
Finished: Yes  
Enclosed: Yes  
Contiguous: Yes  
Permitted: Yes  
Wet space: No  
Addition: No  
Conversion: No

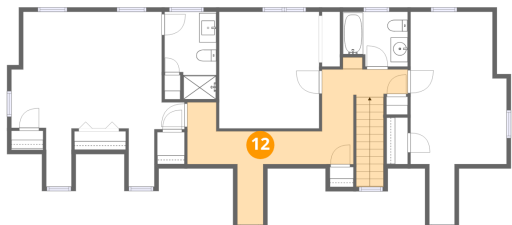
### 11 Floor 2 - Dining Room



Dimensions: 14'6" x 10'9"  
Area: 156 sq. ft  
Counted as living area: Yes

Heated: Yes  
Finished: Yes  
Enclosed: Yes  
Contiguous: Yes  
Permitted: Yes  
Wet space: No  
Addition: No  
Conversion: No

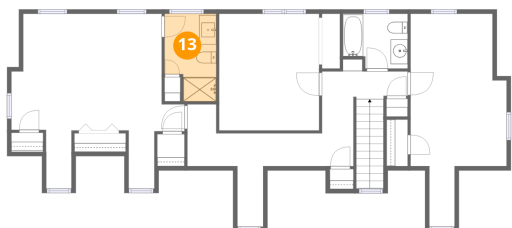
### 12 Floor 3 - Hall



Dimensions: 21'5" x 11'6"  
Area: 189 sq. ft  
Counted as living area: Yes

Heated: Yes  
Finished: Yes  
Enclosed: Yes  
Contiguous: Yes  
Permitted: Yes  
Wet space: No  
Addition: No  
Conversion: No

### 13 Floor 3 - Bath



Dimensions: 6'0" x 10'3"  
Area: 55 sq. ft  
Counted as living area: Yes

Heated: Yes  
Finished: Yes  
Enclosed: Yes  
Contiguous: Yes  
Permitted: Yes  
Wet space: Yes  
Addition: No  
Conversion: No

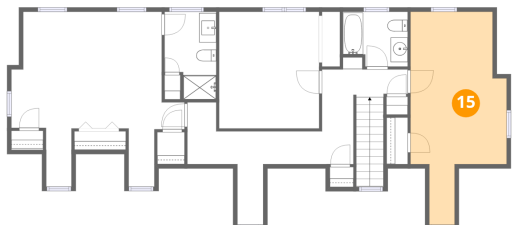
### 14 Floor 3 - Bath



Dimensions: 7'7" x 6'5"  
Area: 45 sq. ft  
Counted as living area: Yes

Heated: Yes  
Finished: Yes  
Enclosed: Yes  
Contiguous: Yes  
Permitted: Yes  
Wet space: Yes  
Addition: No  
Conversion: No

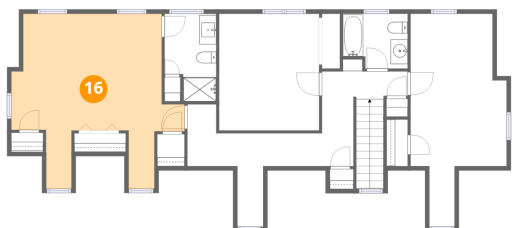
### 15 Floor 3 - Bedroom



Dimensions: 11'3" x 24'10"  
Area: 207 sq. ft  
Counted as living area: Yes

Heated: Yes  
Finished: Yes  
Enclosed: Yes  
Contiguous: Yes  
Permitted: Yes  
Wet space: No  
Addition: No  
Conversion: No

### 16 Floor 3 - Primary Bedroom



Dimensions: 20'2" x 20'4"  
Area: 278 sq. ft  
Counted as living area: Yes

Heated: Yes  
Finished: Yes  
Enclosed: Yes  
Contiguous: Yes  
Permitted: Yes  
Wet space: No  
Addition: No  
Conversion: No

### 17 Floor 3 - Bedroom



Dimensions: 11'8" x 13'7"  
Area: 159 sq. ft  
Counted as living area: Yes

Heated: Yes  
Finished: Yes  
Enclosed: Yes  
Contiguous: Yes  
Permitted: Yes  
Wet space: No  
Addition: No  
Conversion: No