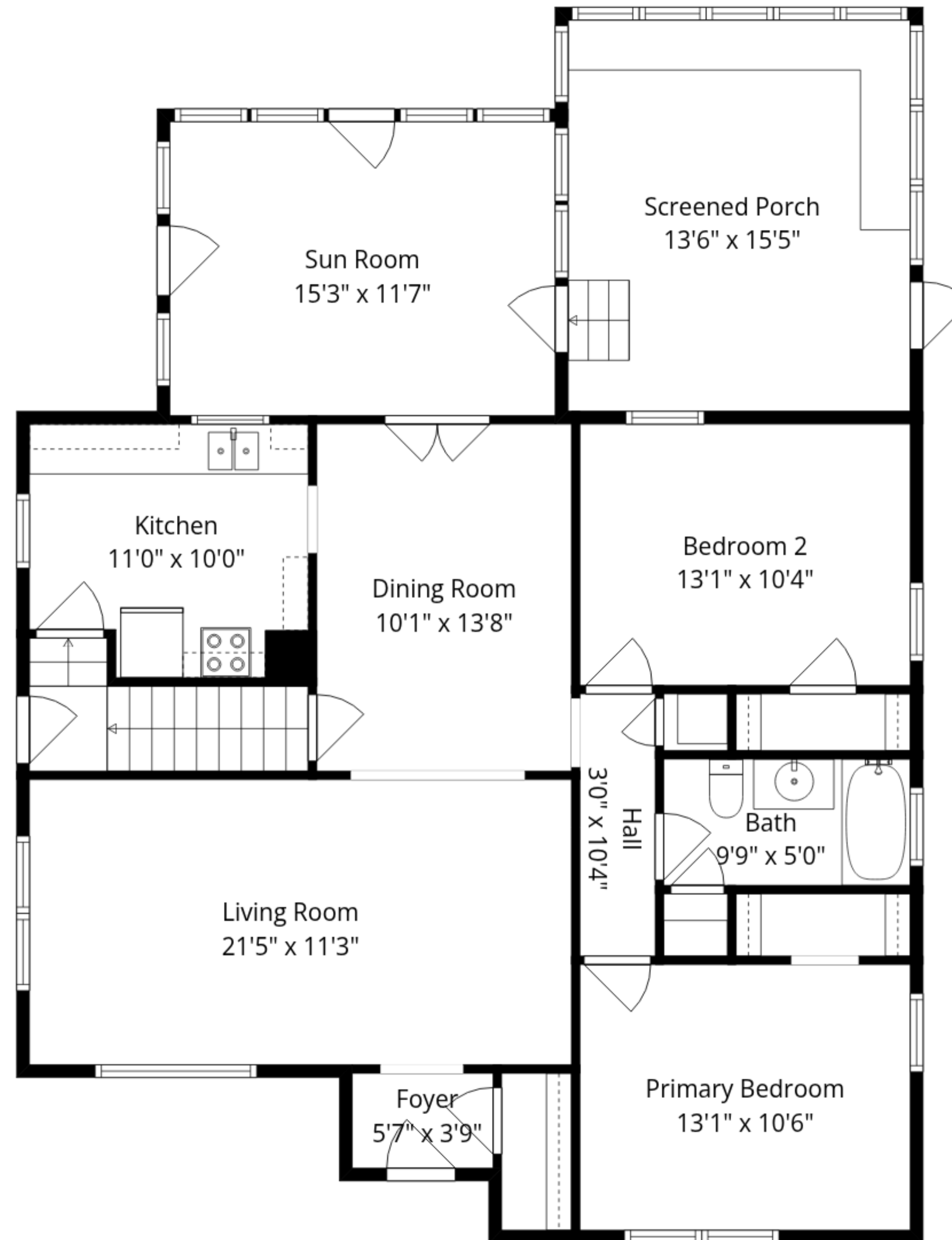


Basement
34'9" x 30'9"

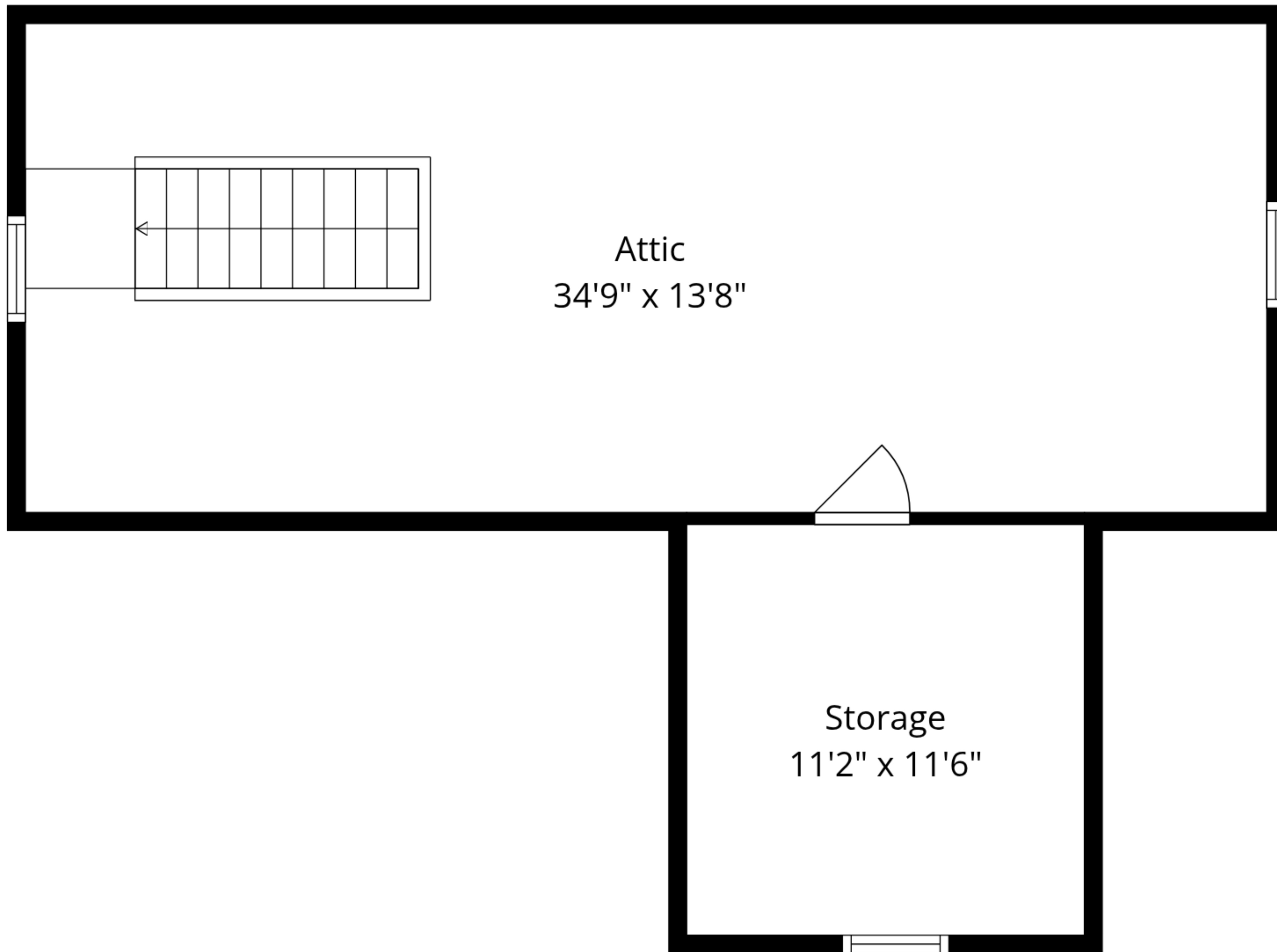
Total GLA: 1269 sq. ft | Total: 3202 sq. ft
Lower floor: (Excluded areas 1038 sq. ft)
Main floor: 1269 sq. ft (Excluded areas 226 sq. ft)
Upper floor: 0 sq. ft (Excluded areas 669 sq. ft)

Sizes And Dimensions Are Approximate. Actual May Vary.



Total GLA: 1269 sq. ft | Total: 3202 sq. ft
 Lower floor: (Excluded areas 1038 sq. ft)
 Main floor: 1269 sq. ft (Excluded areas 226 sq. ft)
 Upper floor: 0 sq. ft (Excluded areas 669 sq. ft)

Sizes And Dimensions Are Approximate. Actual May Vary.

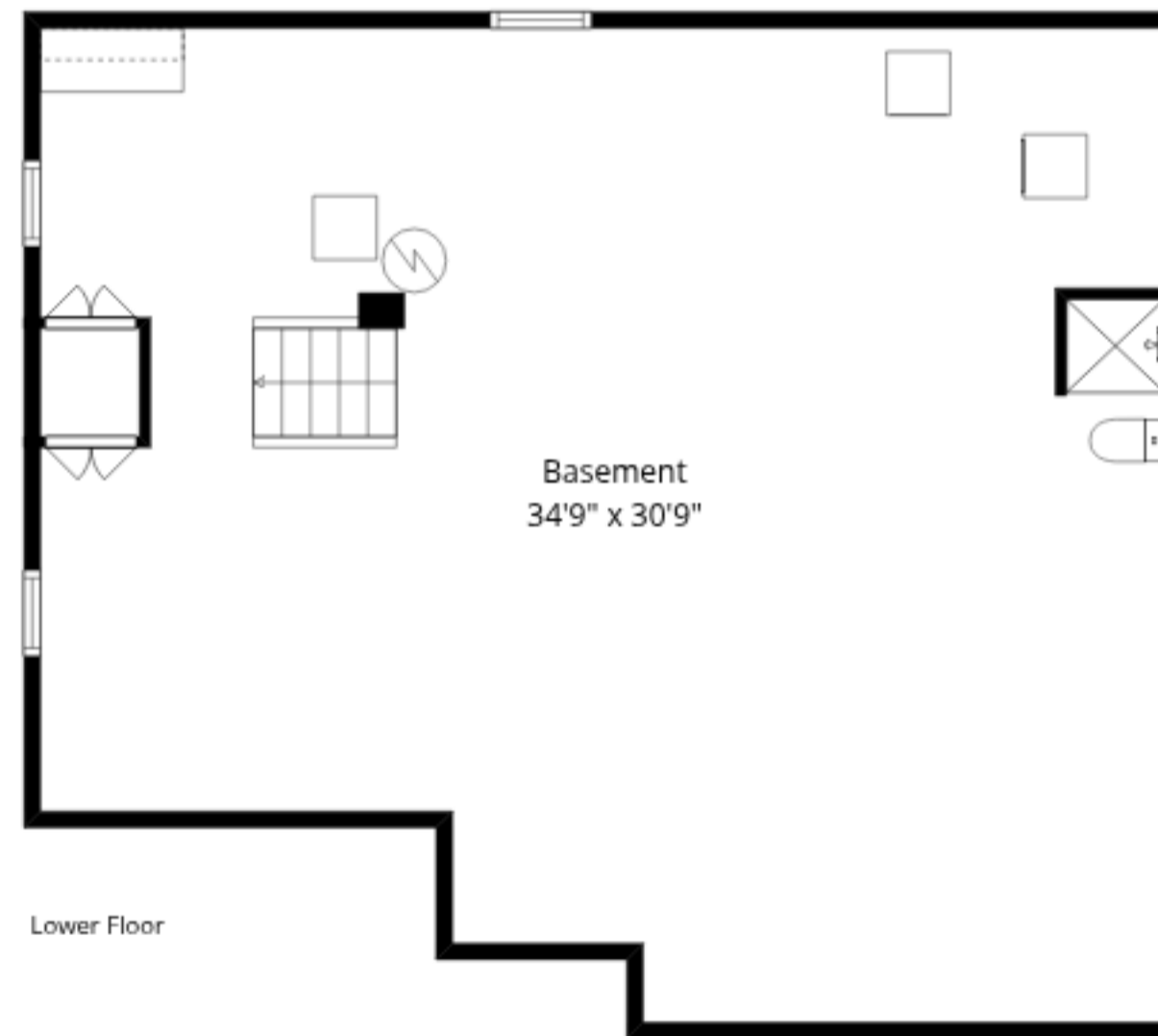
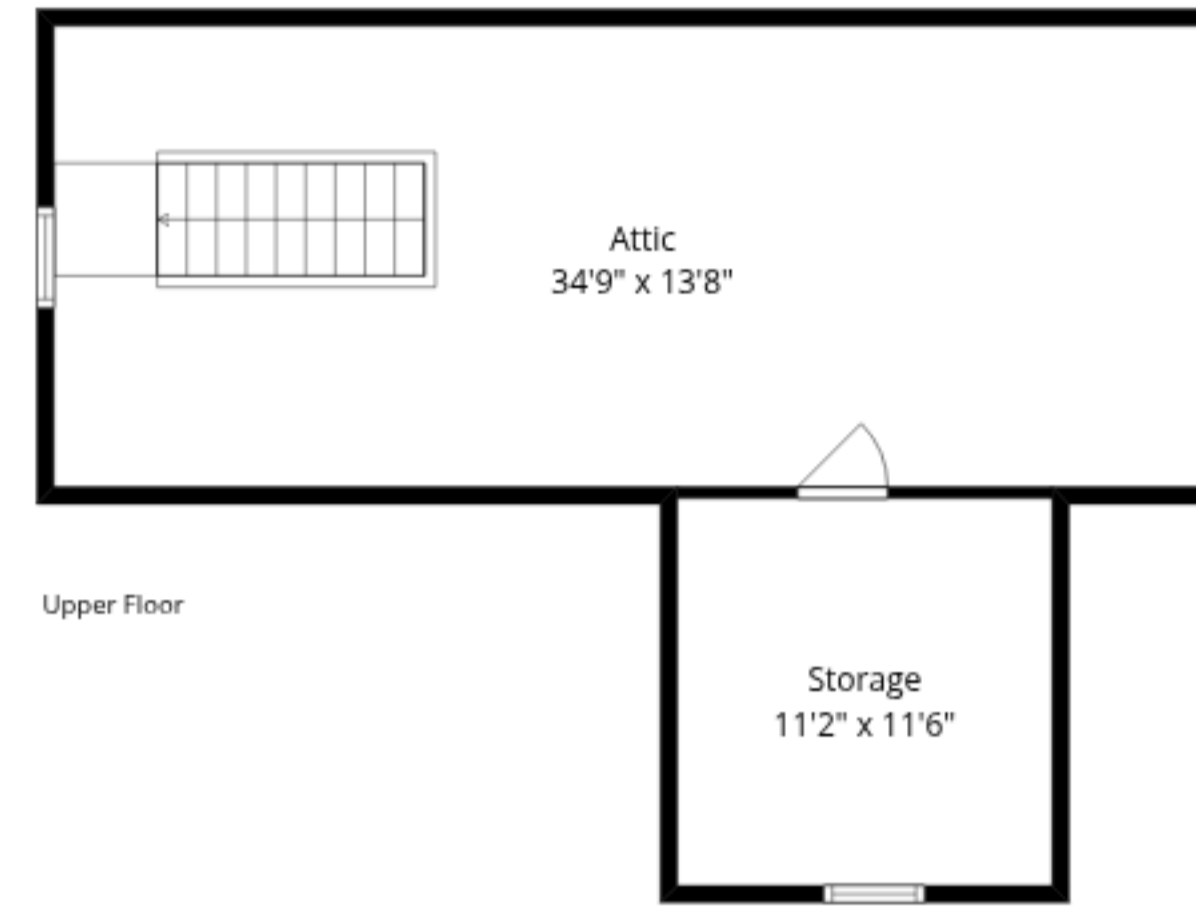
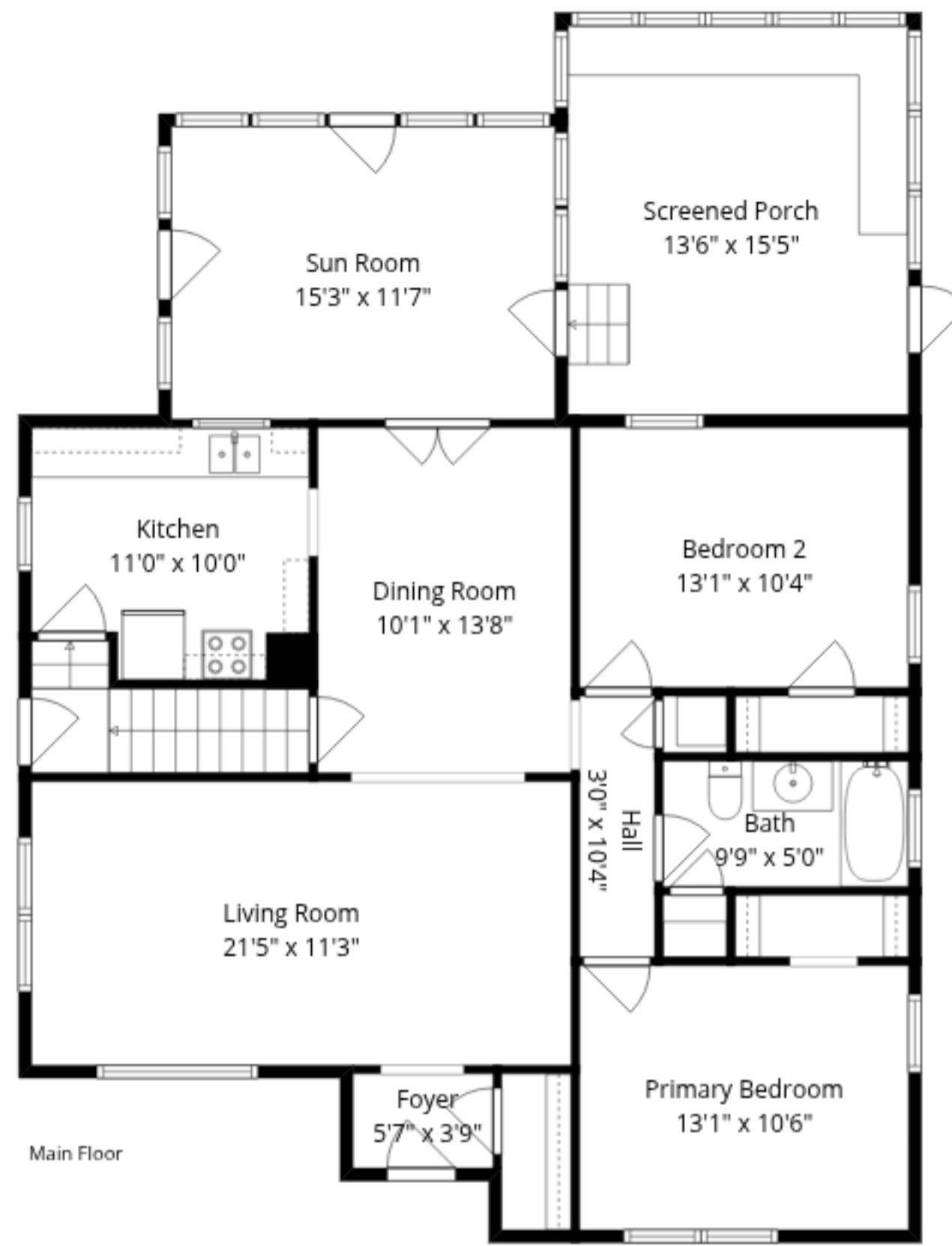


Attic
34'9" x 13'8"

Storage
11'2" x 11'6"

Total GLA: 1269 sq. ft | Total: 3202 sq. ft
Lower floor: (Excluded areas 1038 sq. ft)
Main floor: 1269 sq. ft (Excluded areas 226 sq. ft)
Upper floor: 0 sq. ft (Excluded areas 669 sq. ft)

Sizes And Dimensions Are Approximate. Actual May Vary.



Total GLA: 1269 sq. ft | Total: 3202 sq. ft
 Lower floor: (Excluded areas 1038 sq. ft)
 Main floor: 1269 sq. ft (Excluded areas 226 sq. ft)
 Upper floor: 0 sq. ft (Excluded areas 669 sq. ft)

Sizes And Dimensions Are Approximate. Actual May Vary.