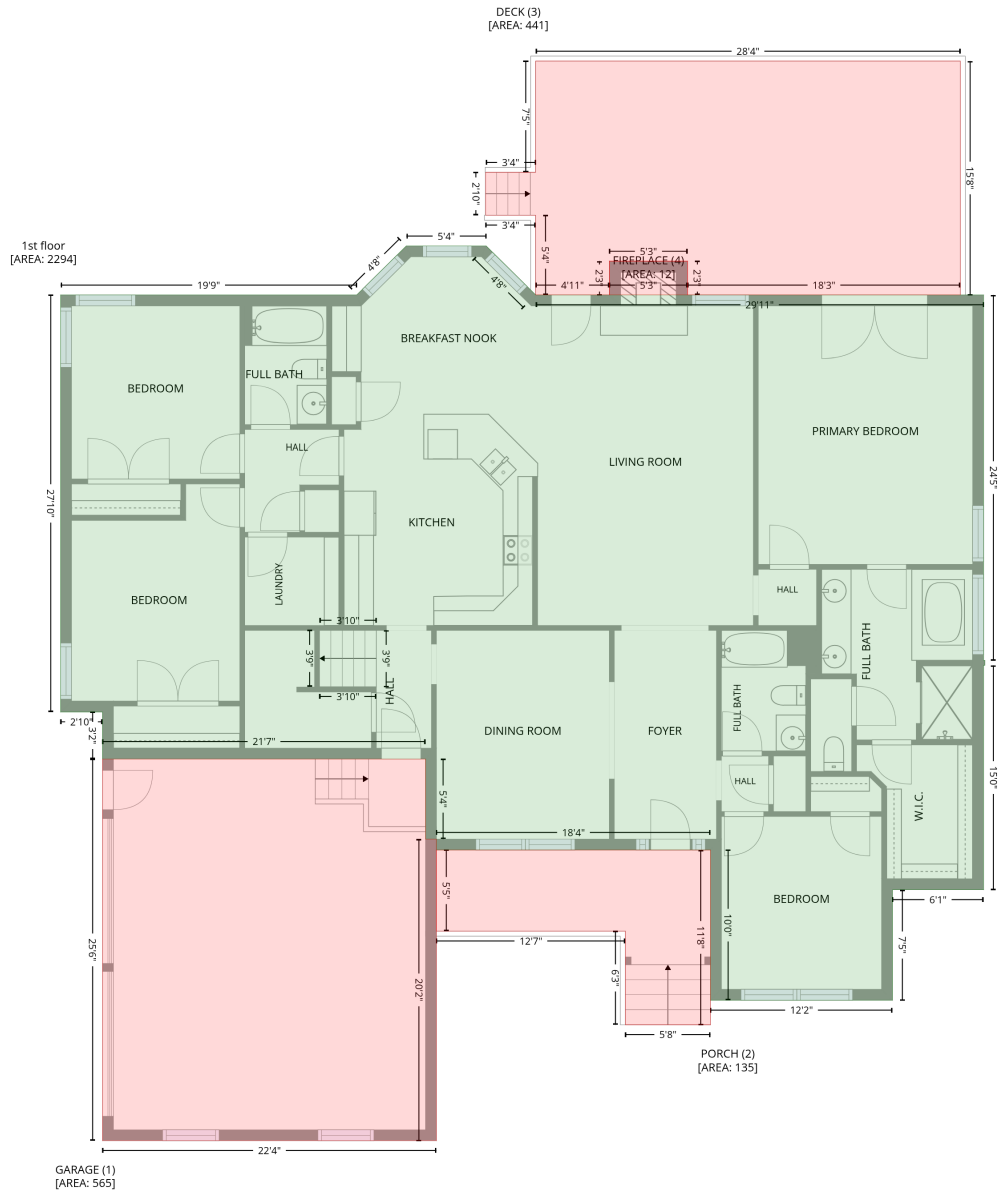


124 Riverway Lane, New Market, Madison County, Alabama, United States, 35761

Gross Living Area: 3076 sq. ft

Level 1



Space	Area (sq. ft)	Calculation
1st floor (Living area)	2294	Coordinate Polygon Area Algorithm using inches $-((281.9 + 345.8) * (2.1 - 2.1) + (345.8 + 385.6) * (2.1 - 41.4) + (385.6 + 744.3) * (41.4 - 41.4) + (744.3 + 744.3) * (41.4 - 334.3) + (744.3 + 745.4) * (334.3 - 334.3) + (745.4 + 745.4) * (334.3 - 338.3) + (745.4 + 744.3) * (338.3 - 338.3) + (744.3 + 744.3) * (338.3 - 518.2) + (744.3 + 671.4) * (518.2 - 518.2) + (671.4 + 671.4) * (518.2 - 606.8) + (671.4 + 525.6) * (606.8 - 606.8) + (525.6 + 525.6) * (606.8 - 486.3) + (525.6 + 306) * (486.3 - 486.3) + (306 + 306) * (486.3 - 477.6) + (306 + 297.3) * (477.6 - 477.6) + (297.3 + 297.3) * (477.6 - 413.4) + (297.3 + 38.5) * (413.4 - 413.4) + (38.5 + 38.5) * (413.4 - 375.7) + (38.5 + 4.9) * (375.7 - 375.7) + (4.9 + 4.9) * (375.7 - 41.4) + (4.9 + 242.1) * (41.4 - 41.4) + (242.1 + 281.9) * (41.4 - 2.1)) * 0.5 * 0.00694$

124 Riverway Lane, New Market, Madison County, Alabama, United States, 35761

Gross Living Area: 3076 sq. ft

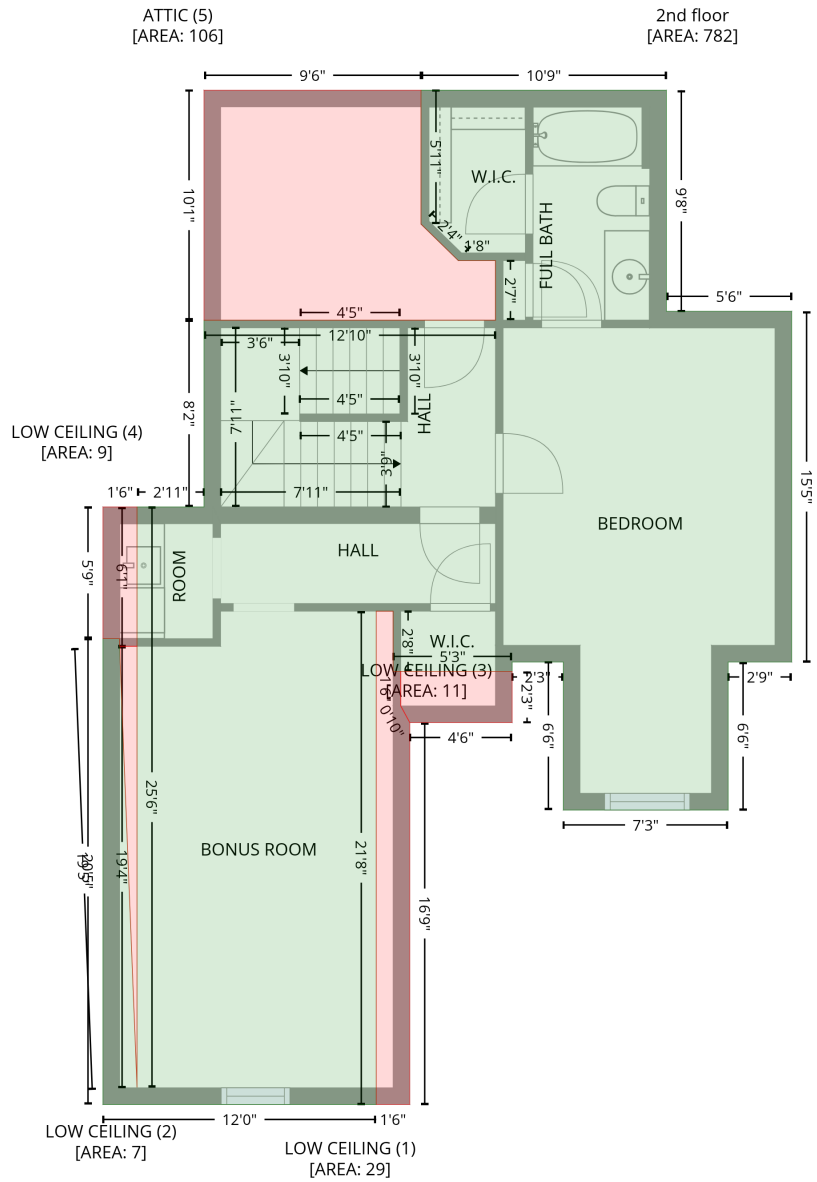
Level 1

Space	Area (sq. ft)	Calculation <small>Coordinate Polygon Area Algorithm using inches</small>
GARAGE (Non-living area)	565	$-\left((297.3 + 297.3) * (413.4 - 477.6) + (297.3 + 306) * (477.6 - 477.6) + (306 + 306) * (477.6 - 719.4) + (306 + 38.5) * (719.4 - 719.4) + (38.5 + 38.5) * (719.4 - 413.4) + (38.5 + 297.3) * (413.4 - 413.4)\right) * 0.5 * 0.00694$
PORCH (Non-living area)	135	$-\left((525.6 + 525.6) * (486.3 - 626.5) + (525.6 + 457.3) * (626.5 - 626.5) + (457.3 + 457.3) * (626.5 - 551.4) + (457.3 + 306) * (551.4 - 551.4) + (306 + 306) * (551.4 - 486.3) + (306 + 525.6) * (486.3 - 486.3)\right) * 0.5 * 0.00694$
DECK (Non-living area)	441	$-\left((725.7 + 725.7) * (-146.2 - 41.4) + (725.7 + 507.2) * (41.4 - 41.4) + (507.2 + 507.2) * (41.4 - 14.2) + (507.2 + 444.5) * (14.2 - 14.2) + (444.5 + 444.5) * (14.2 - 41.4) + (444.5 + 385.6) * (41.4 - 41.4) + (385.6 + 385.5) * (41.4 - -22.5) + (385.5 + 345.5) * (-22.5 - -22.5) + (345.5 + 345.5) * (-22.5 - -57) + (345.5 + 385.5) * (-57 - -57) + (385.5 + 385.5) * (-57 - -146.2) + (385.5 + 725.7) * (-146.2 - -146.2)\right) * 0.5 * 0.00694$
FIREPLACE (Non-living area)	12	$-\left((507.2 + 507.2) * (14.2 - 41.4) + (507.2 + 444.5) * (41.4 - 41.4) + (444.5 + 444.5) * (41.4 - 14.2) + (444.5 + 507.2) * (14.2 - 14.2)\right) * 0.5 * 0.00694$

124 Riverway Lane, New Market, Madison County, Alabama, United States, 35761

Gross Living Area: 3076 sq. ft

Level 2



124 Riverway Lane, New Market, Madison County, Alabama, United States, 35761

Gross Living Area: 3076 sq. ft

Level 2

Space	Area (sq. ft)	Calculation <small>Coordinate Polygon Area Algorithm using inches</small>
2nd floor (Living area)	782	$-\left((387.3 + 387.3) * (185.1 - 301.6) + (387.3 + 453.3) * (301.6 - 301.6) + (453.3 + 453.3) * (301.6 - 486.3) + (453.3 + 419.8) * (486.3 - 486.3) + (419.8 + 419.8) * (486.3 - 564.3) + (419.8 + 333) * (564.3 - 564.3) + (333 + 333) * (564.3 - 486.3) + (333 + 306) * (486.3 - 486.3) + (306 + 306) * (486.3 - 491.3) + (306 + 243.4) * (491.3 - 491.3) + (243.4 + 243.4) * (491.3 - 459.5) + (243.4 + 234.5) * (459.5 - 459.5) + (234.5 + 234.5) * (459.5 - 719.4) + (234.5 + 90.5) * (719.4 - 719.4) + (90.5 + 90.5) * (719.4 - 474) + (90.5 + 99.3) * (474 - 474) + (99.3 + 99.3) * (474 - 478) + (99.3 + 108.5) * (478 - 710.4) + (108.5 + 108.5) * (710.4 - 404.7) + (108.5 + 143.7) * (404.7 - 404.7) + (143.7 + 143.7) * (404.7 - 306.3) + (143.7 + 297.3) * (306.3 - 306.3) + (297.3 + 297.3) * (306.3 - 274.9) + (297.3 + 277.7) * (274.9 - 274.9) + (277.7 + 258.1) * (274.9 - 255.7) + (258.1 + 258.1) * (255.7 - 185.1) + (258.1 + 387.3) * (185.1 - 185.1)) * 0.5 * 0.00694$
LOW CEILING (Non-living area)	29	$-\left((243.4 + 243.4) * (459.5 - 491.3) + (243.4 + 247.4) * (491.3 - 491.3) + (247.4 + 247.4) * (491.3 - 509.5) + (247.4 + 252.1) * (509.5 - 518.2) + (252.1 + 252.1) * (518.2 - 719.4) + (252.1 + 234.5) * (719.4 - 719.4) + (234.5 + 234.5) * (719.4 - 459.5) + (234.5 + 243.4) * (459.5 - 459.5)) * 0.5 * 0.00694$
LOW CEILING (Non-living area)	7	$-\left((108.5 + 108.5) * (478 - 710.4) + (108.5 + 99.6) * (710.4 - 486.3) + (99.6 + 99.6) * (486.3 - 478) + (99.6 + 108.5) * (478 - 478)) * 0.5 * 0.00694$
LOW CEILING (Non-living area)	11	$-\left((306 + 306) * (491.3 - 518.2) + (306 + 252.1) * (518.2 - 518.2) + (252.1 + 247.4) * (518.2 - 509.5) + (247.4 + 247.4) * (509.5 - 491.3) + (247.4 + 306) * (491.3 - 491.3)) * 0.5 * 0.00694$
LOW CEILING (Non-living area)	9	$-\left((108.5 + 108.5) * (404.7 - 478) + (108.5 + 99.3) * (478 - 478) + (99.3 + 99.3) * (478 - 474) + (99.3 + 90.5) * (474 - 474) + (90.5 + 90.5) * (474 - 404.7) + (90.5 + 108.5) * (404.7 - 404.7)) * 0.5 * 0.00694$
ATTIC (Non-living area)	106	$-\left((258.1 + 258.1) * (185.1 - 255.7) + (258.1 + 277.7) * (255.7 - 274.9) + (277.7 + 297.3) * (274.9 - 274.9) + (297.3 + 297.3) * (274.9 - 306.3) + (297.3 + 143.7) * (306.3 - 306.3) + (143.7 + 143.7) * (306.3 - 185.1) + (143.7 + 258.1) * (185.1 - 185.1)) * 0.5 * 0.00694$