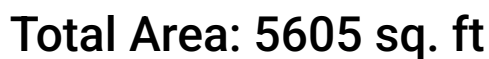


200 Merriman Lane, Westlake Corner, Moneta, Franklin County,
Virginia, United States, 24121



Excluded: Covered patio 275 sq. ft, Garage 741 sq. ft, Screened porch 426 sq. ft, Porch 341 sq. ft, Balcony 392 sq. ft, Deck 654 sq. ft, Storage 57 sq. ft, Low ceiling 45 sq. ft, Walls: 395 sq. ft

Property summary



Home report

**200 Merriman Lane, Westlake Corner, Moneta, Franklin County,
Virginia, United States, 24121**



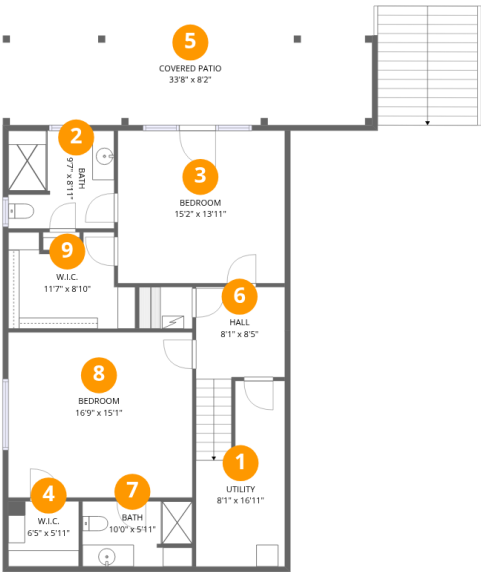
1
Half baths



1
Garages

Home report

200 Merriman Lane, Westlake Corner, Moneta, Franklin County,
Virginia, United States, 24121



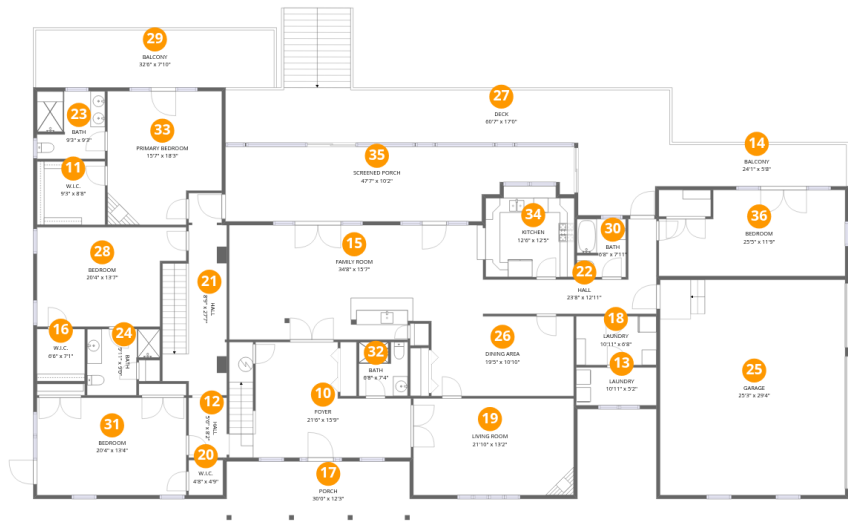
Room dimensions

Floor 1 Total:1101sqft Excluded: 275sqft

#		Max Dimensions	sqft	Included
1	Utility	8'1" x 16'11"	111 sq. ft	Yes
2	Bath	9'7" x 8'11"	85 sq. ft	Yes
3	Bedroom	15'2" x 13'11"	212 sq. ft	Yes
4	W.I.C.	6'5" x 5'11"	38 sq. ft	Yes
5	Covered Patio	33'8" x 8'2"	275 sq. ft	No
6	Hall	8'1" x 8'5"	91 sq. ft	Yes
7	Bath	10'0" x 5'11"	59 sq. ft	Yes
8	Bedroom	16'9" x 15'1"	253 sq. ft	Yes
9	W.I.C.	11'7" x 8'10"	84 sq. ft	Yes

Home report

200 Merriman Lane, Westlake Corner, Moneta, Franklin County,
Virginia, United States, 24121



Room dimensions

Floor 2 Total:3667sqft Excluded: 2554sqft

#		Max Dimensions	sqft	Included
10	Foyer	21'6" x 15'9"	311 sq. ft	Yes
11	W.I.C.	9'3" x 8'8"	80 sq. ft	Yes
12	Hall	5'6" x 8'2"	44 sq. ft	Yes
13	Laundry	10'11" x 5'2"	57 sq. ft	Yes
14	Balcony	24'1" x 5'8"	137 sq. ft	No
15	Family Room	34'8" x 15'7"	510 sq. ft	Yes
16	W.I.C.	6'6" x 7'1"	46 sq. ft	Yes
17	Porch	30'0" x 12'3"	341 sq. ft	No
18	Laundry	10'11" x 6'8"	73 sq. ft	Yes
19	Living Room	21'10" x 13'2"	289 sq. ft	Yes
20	W.I.C.	4'8" x 4'9"	22 sq. ft	Yes

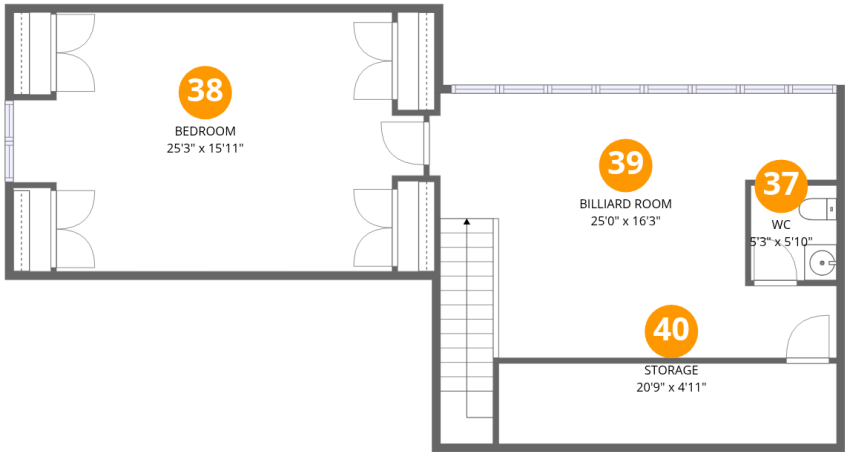
Home report

**200 Merriman Lane, Westlake Corner, Moneta, Franklin County,
Virginia, United States, 24121**

#		Max Dimensions	sqft	Included
21	Hall	8'9" x 27'7"	198 sq. ft	Yes
22	Hall	23'8" x 12'11"	143 sq. ft	Yes
23	Bath	9'3" x 9'3"	84 sq. ft	Yes
24	Bath	9'11" x 9'0"	73 sq. ft	Yes
25	Garage	25'3" x 29'4"	741 sq. ft	No
26	Dining Area	19'5" x 10'10"	211 sq. ft	Yes
27	Deck	60'7" x 17'0"	654 sq. ft	No
28	Bedroom	20'4" x 13'7"	244 sq. ft	Yes
29	Balcony	32'6" x 7'10"	255 sq. ft	No
30	Bath	6'8" x 7'11"	52 sq. ft	Yes
31	Bedroom	20'4" x 13'4"	271 sq. ft	Yes
32	Bath	6'8" x 7'4"	48 sq. ft	Yes
33	Primary Bedroom	15'7" x 18'3"	261 sq. ft	Yes
34	Kitchen	12'6" x 12'5"	144 sq. ft	Yes
35	Screened Porch	47'7" x 10'2"	426 sq. ft	No
36	Bedroom	25'5" x 11'9"	269 sq. ft	Yes

Home report

200 Merriman Lane, Westlake Corner, Moneta, Franklin County,
Virginia, United States, 24121

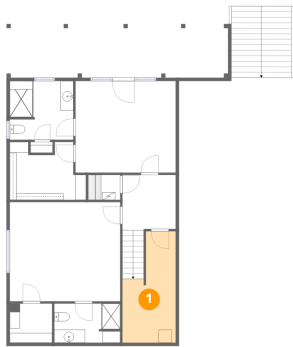


Room dimensions

Floor 3 Total:837sqft Excluded: 102sqft

#		Max Dimensions	sqft	Included
37	WC	5'3" x 5'10"	31 sq. ft	Yes
38	Bedroom	25'3" x 15'11"	349 sq. ft	Yes
39	Billiard Room	25'0" x 16'3"	379 sq. ft	Yes
40	Storage	20'9" x 4'11"	57 sq. ft	No

1 Floor 1 - Utility



Max Dimensions: 8'1" x 16'11"
Calculated Area: 111 sq. ft
Included: Yes

Heated: Yes
Finished: Yes
Enclosed: Yes
Contiguous: Yes
Permitted: Yes
Wet space: No
Addition: No
Conversion: No

2 Floor 1 - Bath



Max Dimensions: 9'7" x 8'11"
Calculated Area: 85 sq. ft
Included: Yes

Heated: Yes
Finished: Yes
Enclosed: Yes
Contiguous: Yes
Permitted: Yes
Wet space: Yes
Addition: No
Conversion: No

3 Floor 1 - Bedroom



Max Dimensions: 15'2" x 13'11"
Calculated Area: 212 sq. ft
Included: Yes

Heated: Yes
Finished: Yes
Enclosed: Yes
Contiguous: Yes
Permitted: Yes
Wet space: No
Addition: No
Conversion: No

4 Floor 1 - W.I.C.



Max Dimensions: 6'5" x 5'11"
Calculated Area: 38 sq. ft
Included: Yes

Heated: Yes
Finished: Yes
Enclosed: Yes
Contiguous: Yes
Permitted: Yes
Wet space: No
Addition: No
Conversion: No

5 Floor 1 - Covered Patio



Max Dimensions: 33'8" x 8'2"
Calculated Area: 275 sq. ft
Included: No

Heated: No
Finished: No
Enclosed: No
Contiguous: Yes
Permitted: Yes
Wet space: No
Addition: No
Conversion: No

6 Floor 1 - Hall



Max Dimensions: 8'1" x 8'5"
Calculated Area: 91 sq. ft
Included: Yes

Heated: Yes
Finished: Yes
Enclosed: Yes
Contiguous: Yes
Permitted: Yes
Wet space: No
Addition: No
Conversion: No

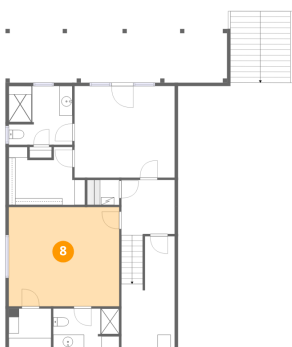
7 Floor 1 - Bath



Max Dimensions: 10'0" x 5'11"
Calculated Area: 59 sq. ft
Included: Yes

Heated: Yes
Finished: Yes
Enclosed: Yes
Contiguous: Yes
Permitted: Yes
Wet space: Yes
Addition: No
Conversion: No

8 Floor 1 - Bedroom

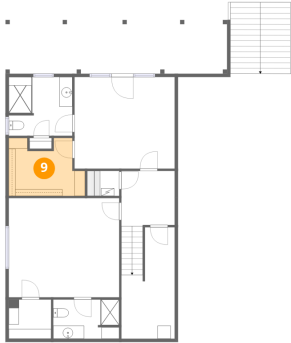


Max Dimensions: 16'9" x 15'1"
Calculated Area: 253 sq. ft
Included: Yes

Heated: Yes
Finished: Yes
Enclosed: Yes
Contiguous: Yes
Permitted: Yes
Wet space: No
Addition: No
Conversion: No

200 Merriman Lane, Westlake Corner, Moneta, Franklin County,
Virginia, United States, 24121

9 Floor 1 - W.I.C.



Max Dimensions: 11'7" x 8'10"
Calculated Area: 84 sq. ft
Included: Yes

Heated: Yes
Finished: Yes
Enclosed: Yes
Contiguous: Yes
Permitted: Yes
Wet space: No
Addition: No
Conversion: No

10 Floor 2 - Foyer



Max Dimensions: 21'6" x 15'9"
Calculated Area: 311 sq. ft
Included: Yes

Heated: Yes
Finished: Yes
Enclosed: Yes
Contiguous: Yes
Permitted: Yes
Wet space: No
Addition: No
Conversion: No

11 Floor 2 - W.I.C.



Max Dimensions: 9'3" x 8'8"
Calculated Area: 80 sq. ft
Included: Yes

Heated: Yes
Finished: Yes
Enclosed: Yes
Contiguous: Yes
Permitted: Yes
Wet space: No
Addition: No
Conversion: No

200 Merriman Lane, Westlake Corner, Moneta, Franklin County,
Virginia, United States, 24121

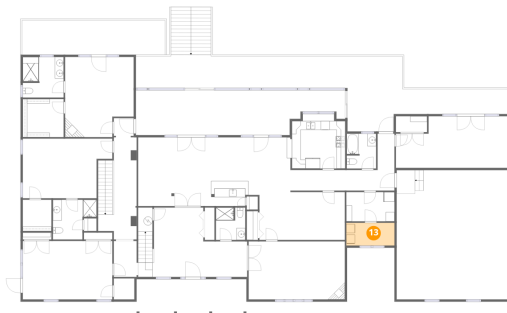
12 Floor 2 - Hall



Max Dimensions: 5'6" x 8'2"
Calculated Area: 44 sq. ft
Included: Yes

Heated: Yes
Finished: Yes
Enclosed: Yes
Contiguous: Yes
Permitted: Yes
Wet space: No
Addition: No
Conversion: No

13 Floor 2 - Laundry



Max Dimensions: 10'11" x 5'2"
Calculated Area: 57 sq. ft
Included: Yes

Heated: Yes
Finished: Yes
Enclosed: Yes
Contiguous: Yes
Permitted: Yes
Wet space: No
Addition: No
Conversion: No

14 Floor 2 - Balcony

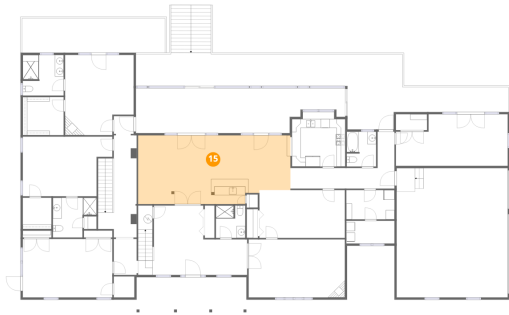


Max Dimensions: 24'1" x 5'8"
Calculated Area: 137 sq. ft
Included: No

Heated: No
Finished: No
Enclosed: No
Contiguous: Yes
Permitted: Yes
Wet space: No
Addition: No
Conversion: No

200 Merriman Lane, Westlake Corner, Moneta, Franklin County,
Virginia, United States, 24121

15 Floor 2 - Family Room



Max Dimensions: 34'8" x 15'7"
Calculated Area: 510 sq. ft
Included: Yes

Heated: Yes
Finished: Yes
Enclosed: Yes
Contiguous: Yes
Permitted: Yes
Wet space: No
Addition: No
Conversion: No

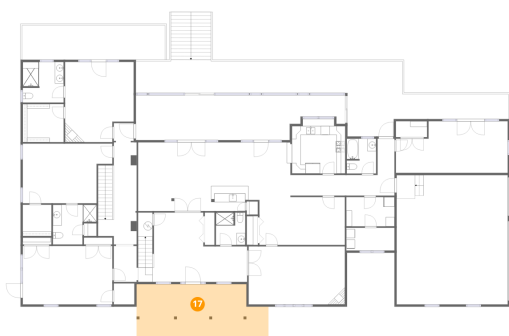
16 Floor 2 - W.I.C.



Max Dimensions: 6'6" x 7'1"
Calculated Area: 46 sq. ft
Included: Yes

Heated: Yes
Finished: Yes
Enclosed: Yes
Contiguous: Yes
Permitted: Yes
Wet space: No
Addition: No
Conversion: No

17 Floor 2 - Porch

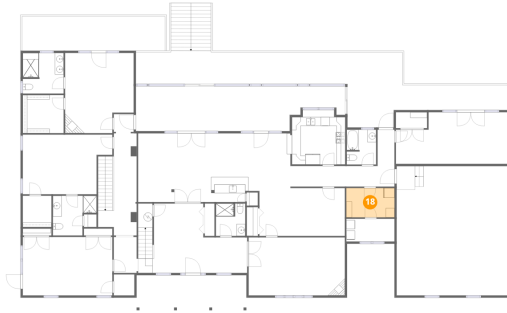


Max Dimensions: 30'0" x 12'3"
Calculated Area: 341 sq. ft
Included: No

Heated: No
Finished: No
Enclosed: No
Contiguous: Yes
Permitted: Yes
Wet space: No
Addition: No
Conversion: No

200 Merriman Lane, Westlake Corner, Moneta, Franklin County,
Virginia, United States, 24121

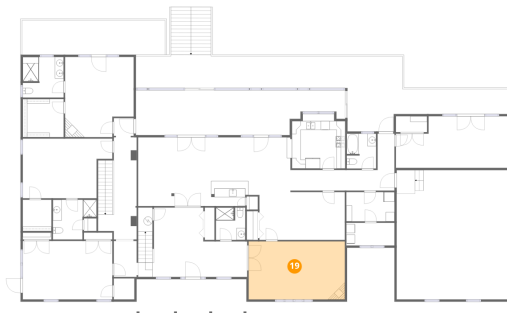
18 Floor 2 - Laundry



Max Dimensions: 10'11" x 6'8"
Calculated Area: 73 sq. ft
Included: Yes

Heated: Yes
Finished: Yes
Enclosed: Yes
Contiguous: Yes
Permitted: Yes
Wet space: No
Addition: No
Conversion: No

19 Floor 2 - Living Room



Max Dimensions: 21'10" x 13'2"
Calculated Area: 289 sq. ft
Included: Yes

Heated: Yes
Finished: Yes
Enclosed: Yes
Contiguous: Yes
Permitted: Yes
Wet space: No
Addition: No
Conversion: No

20 Floor 2 - W.I.C.

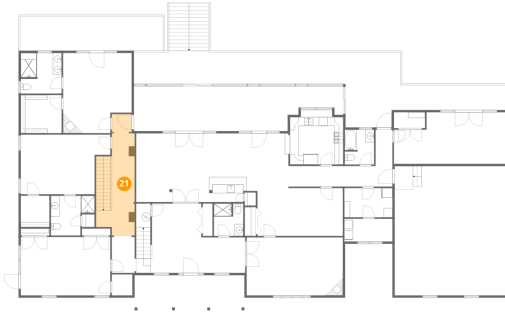


Max Dimensions: 4'8" x 4'9"
Calculated Area: 22 sq. ft
Included: Yes

Heated: Yes
Finished: Yes
Enclosed: Yes
Contiguous: Yes
Permitted: Yes
Wet space: No
Addition: No
Conversion: No

200 Merriman Lane, Westlake Corner, Moneta, Franklin County,
Virginia, United States, 24121

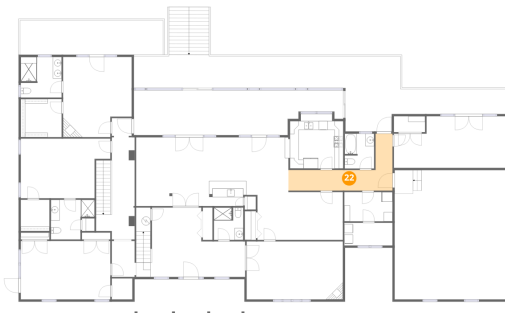
21 Floor 2 - Hall



Max Dimensions: 8'9" x 27'7"
Calculated Area: 198 sq. ft
Included: Yes

Heated: Yes
Finished: Yes
Enclosed: Yes
Contiguous: Yes
Permitted: Yes
Wet space: No
Addition: No
Conversion: No

22 Floor 2 - Hall



Max Dimensions: 23'8" x 12'11"
Calculated Area: 143 sq. ft
Included: Yes

Heated: Yes
Finished: Yes
Enclosed: Yes
Contiguous: Yes
Permitted: Yes
Wet space: No
Addition: No
Conversion: No

23 Floor 2 - Bath



Max Dimensions: 9'3" x 9'3"
Calculated Area: 84 sq. ft
Included: Yes

Heated: Yes
Finished: Yes
Enclosed: Yes
Contiguous: Yes
Permitted: Yes
Wet space: Yes
Addition: No
Conversion: No

24 Floor 2 - Bath



Max Dimensions: 9'11" x 9'0"
Calculated Area: 73 sq. ft
Included: Yes

Heated: Yes
Finished: Yes
Enclosed: Yes
Contiguous: Yes
Permitted: Yes
Wet space: Yes
Addition: No
Conversion: No

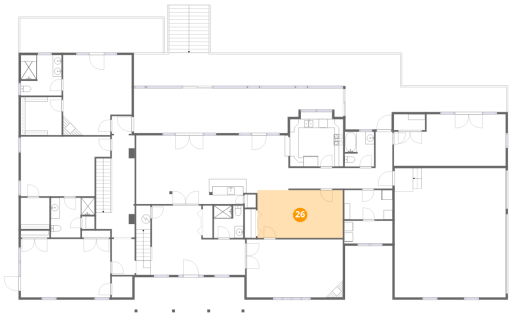
25 Floor 2 - Garage



Max Dimensions: 25'3" x 29'4"
Calculated Area: 741 sq. ft
Included: No

Heated: No
Finished: No
Enclosed: Yes
Contiguous: Yes
Permitted: Yes
Wet space: No
Addition: No
Conversion: No

26 Floor 2 - Dining Area



Max Dimensions: 19'5" x 10'10"
Calculated Area: 211 sq. ft
Included: Yes

Heated: Yes
Finished: Yes
Enclosed: Yes
Contiguous: Yes
Permitted: Yes
Wet space: No
Addition: No
Conversion: No

200 Merriman Lane, Westlake Corner, Moneta, Franklin County,
Virginia, United States, 24121

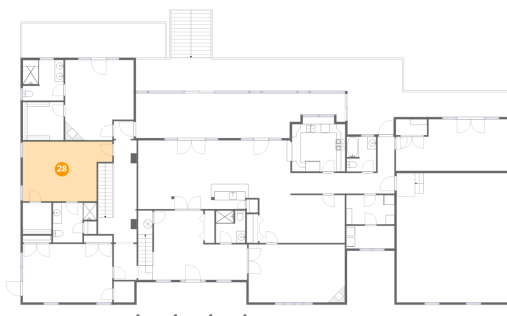
27 Floor 2 - Deck



Max Dimensions: 60'7" x 17'0"
Calculated Area: 654 sq. ft
Included: No

Heated: No
Finished: No
Enclosed: No
Contiguous: Yes
Permitted: Yes
Wet space: No
Addition: No
Conversion: No

28 Floor 2 - Bedroom



Max Dimensions: 20'4" x 13'7"
Calculated Area: 244 sq. ft
Included: Yes

Heated: Yes
Finished: Yes
Enclosed: Yes
Contiguous: Yes
Permitted: Yes
Wet space: No
Addition: No
Conversion: No

29 Floor 2 - Balcony



Max Dimensions: 32'6" x 7'10"
Calculated Area: 255 sq. ft
Included: No

Heated: No
Finished: No
Enclosed: No
Contiguous: Yes
Permitted: Yes
Wet space: No
Addition: No
Conversion: No

30 Floor 2 - Bath



Max Dimensions: 6'8" x 7'11"
Calculated Area: 52 sq. ft
Included: Yes

Heated: Yes
Finished: Yes
Enclosed: Yes
Contiguous: Yes
Permitted: Yes
Wet space: Yes
Addition: No
Conversion: No

31 Floor 2 - Bedroom



Max Dimensions: 20'4" x 13'4"
Calculated Area: 271 sq. ft
Included: Yes

Heated: Yes
Finished: Yes
Enclosed: Yes
Contiguous: Yes
Permitted: Yes
Wet space: No
Addition: No
Conversion: No

32 Floor 2 - Bath



Max Dimensions: 6'8" x 7'4"
Calculated Area: 48 sq. ft
Included: Yes

Heated: Yes
Finished: Yes
Enclosed: Yes
Contiguous: Yes
Permitted: Yes
Wet space: Yes
Addition: No
Conversion: No

200 Merriman Lane, Westlake Corner, Moneta, Franklin County,
Virginia, United States, 24121

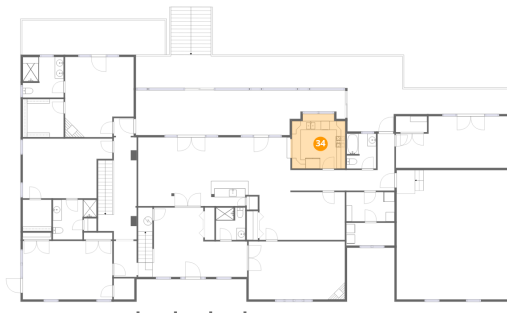
33 Floor 2 - Primary Bedroom



Max Dimensions: 15'7" x 18'3"
Calculated Area: 261 sq. ft
Included: Yes

Heated: Yes
Finished: Yes
Enclosed: Yes
Contiguous: Yes
Permitted: Yes
Wet space: No
Addition: No
Conversion: No

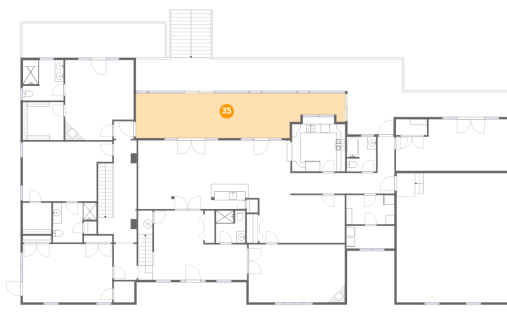
34 Floor 2 - Kitchen



Max Dimensions: 12'6" x 12'5"
Calculated Area: 144 sq. ft
Included: Yes

Heated: Yes
Finished: Yes
Enclosed: Yes
Contiguous: Yes
Permitted: Yes
Wet space: No
Addition: No
Conversion: No

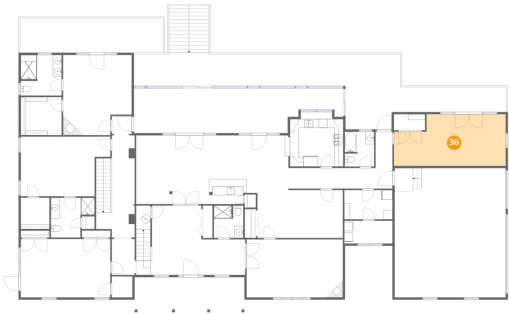
35 Floor 2 - Screened Porch



Max Dimensions: 47'7" x 10'2"
Calculated Area: 426 sq. ft
Included: No

Heated: No
Finished: No
Enclosed: No
Contiguous: Yes
Permitted: Yes
Wet space: No
Addition: No
Conversion: No

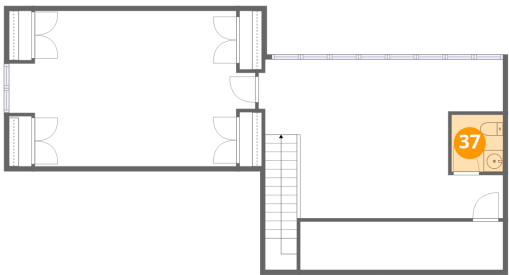
36 Floor 2 - Bedroom



Max Dimensions: 25'5" x 11'9"
Calculated Area: 269 sq. ft
Included: Yes

Heated: Yes
Finished: Yes
Enclosed: Yes
Contiguous: Yes
Permitted: Yes
Wet space: No
Addition: No
Conversion: No

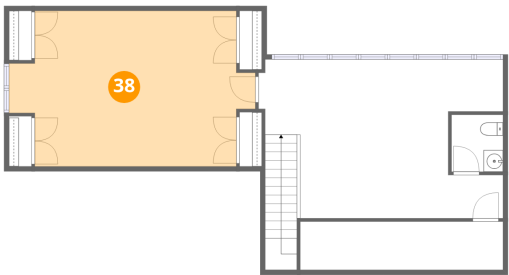
37 Floor 3 - WC



Max Dimensions: 5'3" x 5'10"
Calculated Area: 31 sq. ft
Included: Yes

Heated: Yes
Finished: Yes
Enclosed: Yes
Contiguous: Yes
Permitted: Yes
Wet space: Yes
Addition: No
Conversion: No

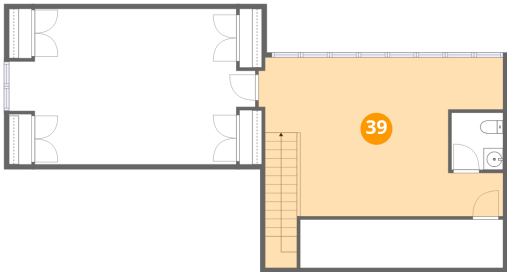
38 Floor 3 - Bedroom



Max Dimensions: 25'3" x 15'11"
Calculated Area: 349 sq. ft
Included: Yes

Heated: Yes
Finished: Yes
Enclosed: Yes
Contiguous: Yes
Permitted: Yes
Wet space: No
Addition: No
Conversion: No

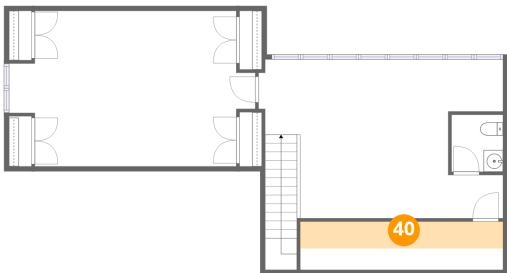
39 Floor 3 - Billiard Room



Max Dimensions: 25'0" x 16'3"
Calculated Area: 379 sq. ft
Included: Yes

Heated: Yes
Finished: Yes
Enclosed: Yes
Contiguous: Yes
Permitted: Yes
Wet space: No
Addition: No
Conversion: No

40 Floor 3 - Storage



Max Dimensions: 20'9" x 4'11"
Calculated Area: 57 sq. ft
Included: No

Heated: No
Finished: No
Enclosed: No
Contiguous: No
Permitted: Yes
Wet space: No
Addition: No
Conversion: No