



**Total Area: 1989 sq. ft**

Basement: 454 sq. ft, 1st Floor: 600 sq. ft, 2nd Floor: 935 sq. ft

Excluded: Utility 123 sq. ft, Garage 439 sq. ft, Walls: 225 sq. ft

**Property summary**

 **3** Floors

 **4** Bedrooms

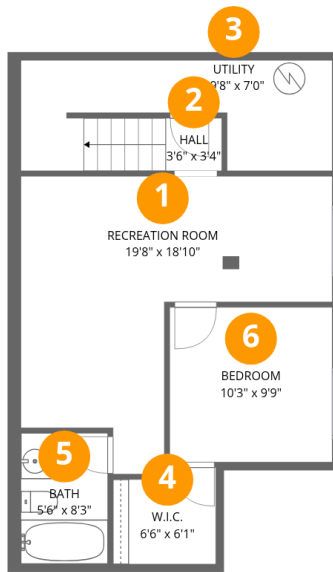
 **3** Bathrooms

Home data report

# 6571 N Cathay St, Denver, CO, US

 **1**  
Half baths

 **1**  
Garages



## Room dimensions

Floor 1 Below grade

Total: 454 sqft

Excluded: 123 sqft

#		Dimensions	sqft	Counted as living area
1	Recreation Room	19'8" x 18'10"	369 sq. ft	Yes
2	Hall	3'6" x 3'4"	12 sq. ft	Yes
3	Utility	19'8" x 7'0"	137 sq. ft	No
4	W.I.C.	6'6" x 6'1"	40 sq. ft	Yes
5	Bath	5'6" x 8'3"	45 sq. ft	Yes
6	Bedroom	10'3" x 9'9"	100 sq. ft	Yes



## Room dimensions

Floor 2

Total: 600sqft

Excluded: 439sqft

#		Dimensions	sqft	Counted as living area
7	Kitchen	7'6" x 15'5"	115 sq. ft	Yes
8	Living Room	13'6" x 11'8"	157 sq. ft	Yes
9	Foyer	3'9" x 4'4"	16 sq. ft	Yes
10	Garage	19'11" x 21'11"	438 sq. ft	No
11	Dining Area	12'6" x 13'4"	167 sq. ft	Yes
12	Bath	4'11" x 4'10"	24 sq. ft	Yes
13	Hall	14'8" x 7'4"	107 sq. ft	Yes



## Room dimensions

Floor 3

Total: 935 sqft

Excluded: 0 sqft

#		Dimensions	sqft	Counted as living area
14	Laundry	6'2" x 6'10"	42 sq. ft	Yes
15	Bath	6'2" x 5'3"	32 sq. ft	Yes
16	Bath	6'2" x 4'8"	29 sq. ft	Yes
17	Hall	3'1" x 18'7"	57 sq. ft	Yes
18	Bedroom	10'1" x 11'1"	112 sq. ft	Yes
19	Bath	3'0" x 5'1"	15 sq. ft	Yes
20	W.I.C.	6'2" x 9'9"	60 sq. ft	Yes
21	Bath	9'6" x 10'8"	101 sq. ft	Yes
22	Bedroom	9'7" x 14'1"	135 sq. ft	Yes
23	Hall	3'8" x 7'1"	26 sq. ft	Yes
24	W.I.C.	4'8" x 5'5"	25 sq. ft	Yes

Home data report

**6571 N Cathay St,Denver,CO,US**

#		Dimensions	sqft	Counted as living area
25	W.I.C.	4'8" x 5'0"	23 sq. ft	Yes
26	Primary Bedroom	13'6" x 14'0"	189 sq. ft	Yes

## 1 Floor 1 - Recreation Room

---



Dimensions: 19'8" x 18'10"  
Area: 369 sq. ft  
Counted as living area: Yes

Heated: Yes  
Finished: Yes  
Enclosed: Yes  
Contiguous: Yes  
Permitted: Yes  
Wet space: No  
Addition: No  
Conversion: No

## 2 Floor 1 - Hall

---



Dimensions: 3'6" x 3'4"  
Area: 12 sq. ft  
Counted as living area: Yes

Heated: Yes  
Finished: Yes  
Enclosed: Yes  
Contiguous: Yes  
Permitted: Yes  
Wet space: No  
Addition: No  
Conversion: No

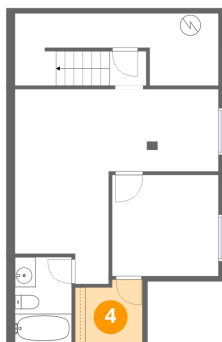
### 3 Floor 1 - Utility



Dimensions: 19'8" x 7'0"  
Area: 137 sq. ft  
Counted as living area: No

Heated: Yes  
Finished: No  
Enclosed: Yes  
Contiguous: Yes  
Permitted: Yes  
Wet space: No  
Addition: No  
Conversion: No

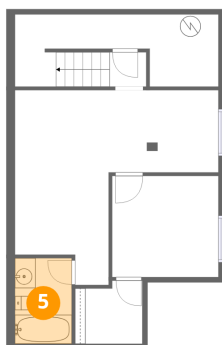
### 4 Floor 1 - W.I.C.



Dimensions: 6'6" x 6'1"  
Area: 40 sq. ft  
Counted as living area: Yes

Heated: Yes  
Finished: Yes  
Enclosed: Yes  
Contiguous: Yes  
Permitted: Yes  
Wet space: No  
Addition: No  
Conversion: No

### 5 Floor 1 - Bath



Dimensions: 5'6" x 8'3"  
Area: 45 sq. ft  
Counted as living area: Yes

Heated: Yes  
Finished: Yes  
Enclosed: Yes  
Contiguous: Yes  
Permitted: Yes  
Wet space: Yes  
Addition: No  
Conversion: No

### 6 Floor 1 - Bedroom



Dimensions: 10'3" x 9'9"  
Area: 100 sq. ft  
Counted as living area: Yes

Heated: Yes  
Finished: Yes  
Enclosed: Yes  
Contiguous: Yes  
Permitted: Yes  
Wet space: No  
Addition: No  
Conversion: No

### 7 Floor 2 - Kitchen



Dimensions: 7'6" x 15'5"  
Area: 115 sq. ft  
Counted as living area: Yes

Heated: Yes  
Finished: Yes  
Enclosed: Yes  
Contiguous: Yes  
Permitted: Yes  
Wet space: No  
Addition: No  
Conversion: No

### 8 Floor 2 - Living Room



Dimensions: 13'6" x 11'8"  
Area: 157 sq. ft  
Counted as living area: Yes

Heated: Yes  
Finished: Yes  
Enclosed: Yes  
Contiguous: Yes  
Permitted: Yes  
Wet space: No  
Addition: No  
Conversion: No

### 9 Floor 2 - Foyer



Dimensions: 3'9" x 4'4"  
Area: 16 sq. ft  
Counted as living area: Yes

Heated: Yes  
Finished: Yes  
Enclosed: Yes  
Contiguous: Yes  
Permitted: Yes  
Wet space: No  
Addition: No  
Conversion: No

### 10 Floor 2 - Garage



Dimensions: 19'11" x 21'11"  
Area: 438 sq. ft  
Counted as living area: No

Heated: No  
Finished: No  
Enclosed: Yes  
Contiguous: Yes  
Permitted: Yes  
Wet space: No  
Addition: No  
Conversion: No

### 11 Floor 2 - Dining Area



Dimensions: 12'6" x 13'4"  
Area: 167 sq. ft  
Counted as living area: Yes

Heated: Yes  
Finished: Yes  
Enclosed: Yes  
Contiguous: Yes  
Permitted: Yes  
Wet space: No  
Addition: No  
Conversion: No

**12** Floor 2 - Bath



Dimensions: 4'11" x 4'10"  
Area: 24 sq. ft  
Counted as living area: Yes

Heated: Yes  
Finished: Yes  
Enclosed: Yes  
Contiguous: Yes  
Permitted: Yes  
Wet space: Yes  
Addition: No  
Conversion: No

**13** Floor 2 - Hall



Dimensions: 14'8" x 7'4"  
Area: 107 sq. ft  
Counted as living area: Yes

Heated: Yes  
Finished: Yes  
Enclosed: Yes  
Contiguous: Yes  
Permitted: Yes  
Wet space: No  
Addition: No  
Conversion: No

**14** Floor 3 - Laundry



Dimensions: 6'2" x 6'10"  
Area: 42 sq. ft  
Counted as living area: Yes

Heated: Yes  
Finished: Yes  
Enclosed: Yes  
Contiguous: Yes  
Permitted: Yes  
Wet space: No  
Addition: No  
Conversion: No

**15** Floor 3 - Bath

---



Dimensions: 6'2" x 5'3"  
Area: 32 sq. ft  
Counted as living area: Yes

Heated: Yes  
Finished: Yes  
Enclosed: Yes  
Contiguous: Yes  
Permitted: Yes  
Wet space: Yes  
Addition: No  
Conversion: No

**16** Floor 3 - Bath

---



Dimensions: 6'2" x 4'8"  
Area: 29 sq. ft  
Counted as living area: Yes

Heated: Yes  
Finished: Yes  
Enclosed: Yes  
Contiguous: Yes  
Permitted: Yes  
Wet space: Yes  
Addition: No  
Conversion: No

**17** Floor 3 - Hall

---



Dimensions: 3'1" x 18'7"  
Area: 57 sq. ft  
Counted as living area: Yes

Heated: Yes  
Finished: Yes  
Enclosed: Yes  
Contiguous: Yes  
Permitted: Yes  
Wet space: No  
Addition: No  
Conversion: No

**18** Floor 3 - Bedroom



Dimensions: 10'1" x 11'1"  
Area: 112 sq. ft  
Counted as living area: Yes

Heated: Yes  
Finished: Yes  
Enclosed: Yes  
Contiguous: Yes  
Permitted: Yes  
Wet space: No  
Addition: No  
Conversion: No

**19** Floor 3 - Bath



Dimensions: 3'0" x 5'1"  
Area: 15 sq. ft  
Counted as living area: Yes

Heated: Yes  
Finished: Yes  
Enclosed: Yes  
Contiguous: Yes  
Permitted: Yes  
Wet space: Yes  
Addition: No  
Conversion: No

**20** Floor 3 - W.I.C.



Dimensions: 6'2" x 9'9"  
Area: 60 sq. ft  
Counted as living area: Yes

Heated: Yes  
Finished: Yes  
Enclosed: Yes  
Contiguous: Yes  
Permitted: Yes  
Wet space: No  
Addition: No  
Conversion: No

**21** Floor 3 - Bath

---



Dimensions: 9'6" x 10'8"  
Area: 101 sq. ft  
Counted as living area: Yes

Heated: Yes  
Finished: Yes  
Enclosed: Yes  
Contiguous: Yes  
Permitted: Yes  
Wet space: Yes  
Addition: No  
Conversion: No

**22** Floor 3 - Bedroom

---



Dimensions: 9'7" x 14'1"  
Area: 135 sq. ft  
Counted as living area: Yes

Heated: Yes  
Finished: Yes  
Enclosed: Yes  
Contiguous: Yes  
Permitted: Yes  
Wet space: No  
Addition: No  
Conversion: No

**23** Floor 3 - Hall

---



Dimensions: 3'8" x 7'1"  
Area: 26 sq. ft  
Counted as living area: Yes

Heated: Yes  
Finished: Yes  
Enclosed: Yes  
Contiguous: Yes  
Permitted: Yes  
Wet space: No  
Addition: No  
Conversion: No

**24** Floor 3 - W.I.C.

---



Dimensions: 4'8" x 5'5"  
Area: 25 sq. ft  
Counted as living area: Yes

Heated: Yes  
Finished: Yes  
Enclosed: Yes  
Contiguous: Yes  
Permitted: Yes  
Wet space: No  
Addition: No  
Conversion: No

**25** Floor 3 - W.I.C.

---



Dimensions: 4'8" x 5'0"  
Area: 23 sq. ft  
Counted as living area: Yes

Heated: Yes  
Finished: Yes  
Enclosed: Yes  
Contiguous: Yes  
Permitted: Yes  
Wet space: No  
Addition: No  
Conversion: No

**26** Floor 3 - Primary Bedroom

---



Dimensions: 13'6" x 14'0"  
Area: 189 sq. ft  
Counted as living area: Yes

Heated: Yes  
Finished: Yes  
Enclosed: Yes  
Contiguous: Yes  
Permitted: Yes  
Wet space: No  
Addition: No  
Conversion: No