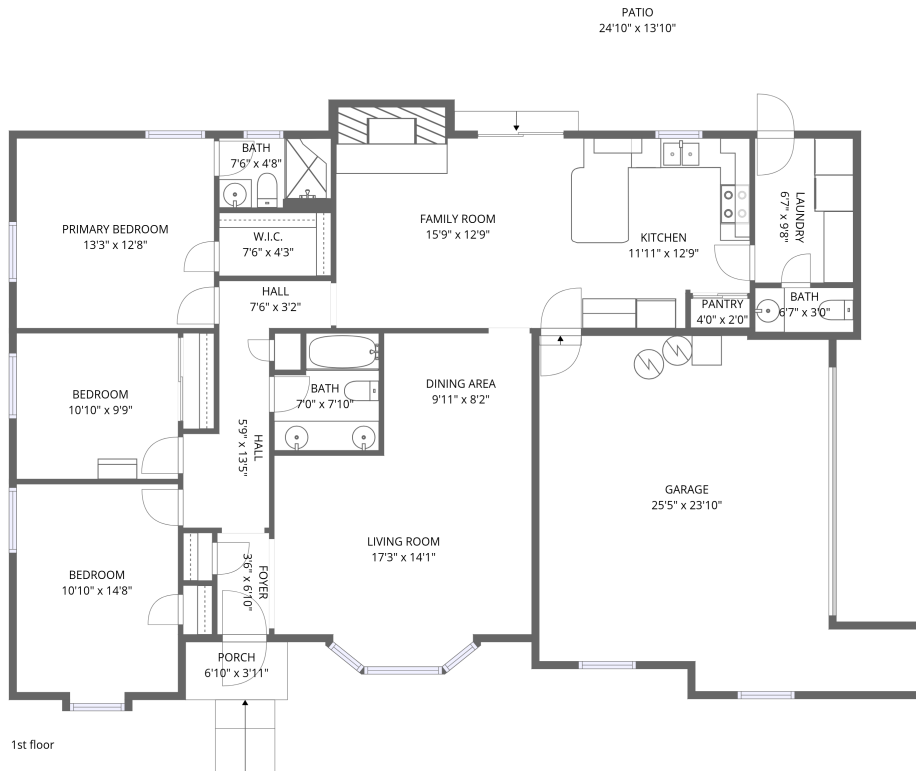


Home data report

2785 N Fleming Cir, Shelbyville, IN, US



Total Area: 1499 sq. ft


1st Floor: 1499 sq. ft

Excluded: Garage 465 sq. ft, Porch 27 sq. ft, Patio 345 sq. ft, Embedded window 3 sq. ft,

Walls: 126 sq. ft

Property summary

 **1** Floors

 **3** Bedrooms

 **2** Bathrooms

Home data report

2785 N Fleming Cir, Shelbyville, IN, US



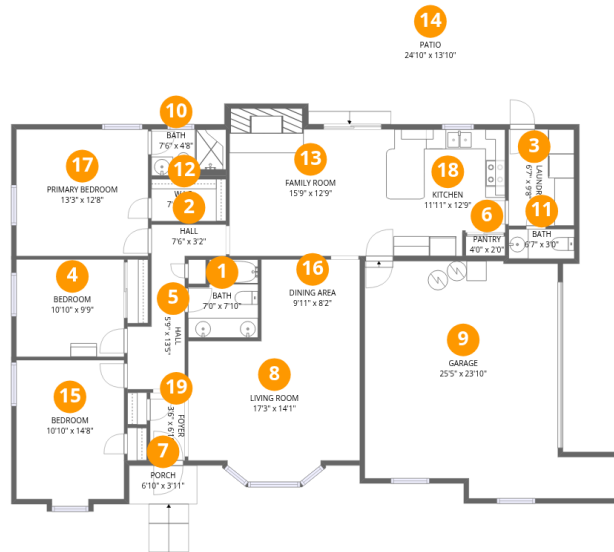
1
Half baths



1
Garages

Home data report

2785 N Fleming Cir, Shelbyville, IN, US



Room dimensions

Floor 1

Total: 1499sqft Excluded: 840sqft

#		Dimensions	sqft	Counted as living area
1	Bath	7'0" x 7'10"	49 sq. ft	Yes
2	Hall	7'6" x 3'2"	24 sq. ft	Yes
3	Laundry	6'7" x 9'8"	64 sq. ft	Yes
4	Bedroom	10'10" x 9'9"	106 sq. ft	Yes
5	Hall	5'9" x 13'5"	60 sq. ft	Yes
6	Pantry	4'0" x 2'0"	8 sq. ft	Yes
7	Porch	6'10" x 3'11"	27 sq. ft	No
8	Living Room	17'3" x 14'1"	224 sq. ft	Yes
9	Garage	25'5" x 23'10"	465 sq. ft	No
10	Bath	7'6" x 4'8"	35 sq. ft	Yes
11	Bath	6'7" x 3'0"	20 sq. ft	Yes

Home data report

2785 N Fleming Cir,Shelbyville,IN,US

#		Dimensions	sqft	Counted as living area
12	W.I.C.	7'6" x 4'3"	32 sq. ft	Yes
13	Family Room	15'9" x 12'9"	216 sq. ft	Yes
14	Patio	24'10" x 13'10"	345 sq. ft	No
15	Bedroom	10'10" x 14'8"	151 sq. ft	Yes
16	Dining Area	9'11" x 8'2"	81 sq. ft	Yes
17	Primary Bedroom	13'3" x 12'8"	169 sq. ft	Yes
18	Kitchen	11'11" x 12'9"	142 sq. ft	Yes
19	Foyer	3'6" x 6'10"	24 sq. ft	Yes

1 Floor 1 - Bath



Dimensions: 7'0" x 7'10"
Area: 49 sq. ft
Counted as living area: Yes

Heated: Yes
Finished: Yes
Enclosed: Yes
Contiguous: Yes
Permitted: Yes
Wet space: Yes
Addition: No
Conversion: No

2 Floor 1 - Hall



Dimensions: 7'6" x 3'2"
Area: 24 sq. ft
Counted as living area: Yes

Heated: Yes
Finished: Yes
Enclosed: Yes
Contiguous: Yes
Permitted: Yes
Wet space: No
Addition: No
Conversion: No

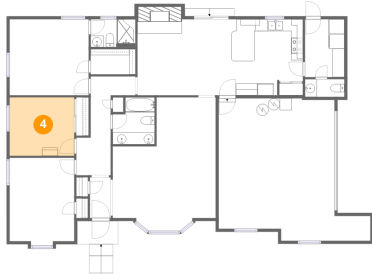
3 Floor 1 - Laundry



Dimensions: 6'7" x 9'8"
Area: 64 sq. ft
Counted as living area: Yes

Heated: Yes
Finished: Yes
Enclosed: Yes
Contiguous: Yes
Permitted: Yes
Wet space: No
Addition: No
Conversion: No

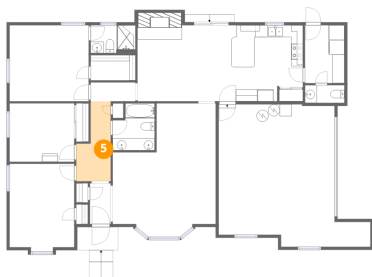
4 Floor 1 - Bedroom



Dimensions: 10'10" x 9'9"
Area: 106 sq. ft
Counted as living area: Yes

Heated: Yes
Finished: Yes
Enclosed: Yes
Contiguous: Yes
Permitted: Yes
Wet space: No
Addition: No
Conversion: No

5 Floor 1 - Hall



Dimensions: 5'9" x 13'5"
Area: 60 sq. ft
Counted as living area: Yes

Heated: Yes
Finished: Yes
Enclosed: Yes
Contiguous: Yes
Permitted: Yes
Wet space: No
Addition: No
Conversion: No

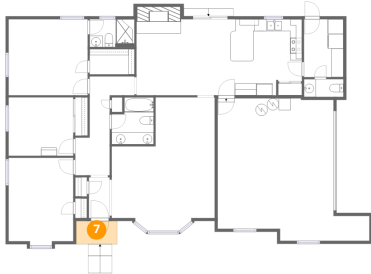
6 Floor 1 - Pantry



Dimensions: 4'0" x 2'0"
Area: 8 sq. ft
Counted as living area: Yes

Heated: Yes
Finished: Yes
Enclosed: Yes
Contiguous: Yes
Permitted: Yes
Wet space: No
Addition: No
Conversion: No

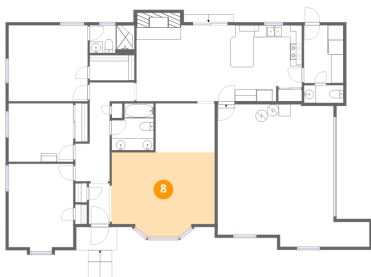
7 Floor 1 - Porch



Dimensions: 6'10" x 3'11"
Area: 27 sq. ft
Counted as living area: No

Heated: No
Finished: No
Enclosed: No
Contiguous: Yes
Permitted: Yes
Wet space: No
Addition: No
Conversion: No

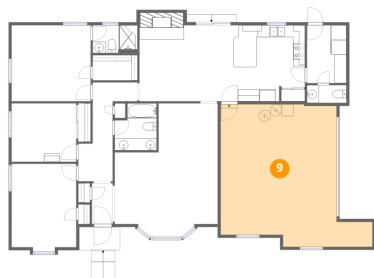
8 Floor 1 - Living Room



Dimensions: 17'3" x 14'1"
Area: 224 sq. ft
Counted as living area: Yes

Heated: Yes
Finished: Yes
Enclosed: Yes
Contiguous: Yes
Permitted: Yes
Wet space: No
Addition: No
Conversion: No

9 Floor 1 - Garage



Dimensions: 25'5" x 23'10"

Area: 465 sq. ft

Counted as living area: No

Heated: No

Finished: No

Enclosed: Yes

Contiguous: Yes

Permitted: Yes

Wet space: No

Addition: No

Conversion: No

10 Floor 1 - Bath



Dimensions: 7'6" x 4'8"

Area: 35 sq. ft

Counted as living area: Yes

Heated: Yes

Finished: Yes

Enclosed: Yes

Contiguous: Yes

Permitted: Yes

Wet space: Yes

Addition: No

Conversion: No

11 Floor 1 - Bath



Dimensions: 6'7" x 3'0"

Area: 20 sq. ft

Counted as living area: Yes

Heated: Yes

Finished: Yes

Enclosed: Yes

Contiguous: Yes

Permitted: Yes

Wet space: Yes

Addition: No

Conversion: No

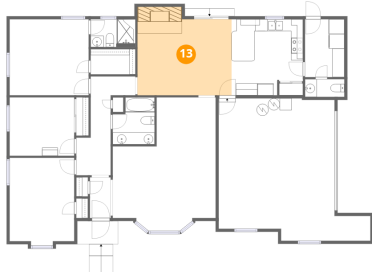
12 Floor 1 - W.I.C.



Dimensions: 7'6" x 4'3"
Area: 32 sq. ft
Counted as living area: Yes

Heated: Yes
Finished: Yes
Enclosed: Yes
Contiguous: Yes
Permitted: Yes
Wet space: No
Addition: No
Conversion: No

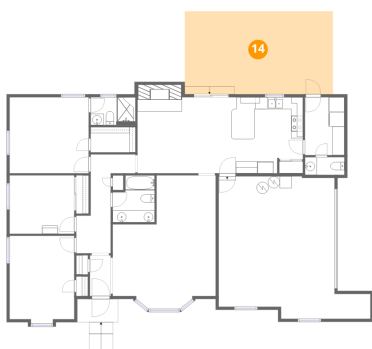
13 Floor 1 - Family Room



Dimensions: 15'9" x 12'9"
Area: 216 sq. ft
Counted as living area: Yes

Heated: Yes
Finished: Yes
Enclosed: Yes
Contiguous: Yes
Permitted: Yes
Wet space: No
Addition: No
Conversion: No

14 Floor 1 - Patio



Dimensions: 24'10" x 13'10"
Area: 345 sq. ft
Counted as living area: No

Heated: No
Finished: No
Enclosed: No
Contiguous: Yes
Permitted: Yes
Wet space: No
Addition: No
Conversion: No

15 Floor 1 - Bedroom



Dimensions: 10'10" x 14'8"
Area: 151 sq. ft
Counted as living area: Yes

Heated: Yes
Finished: Yes
Enclosed: Yes
Contiguous: Yes
Permitted: Yes
Wet space: No
Addition: No
Conversion: No

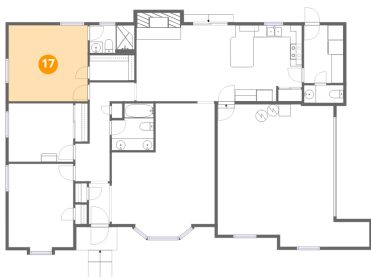
16 Floor 1 - Dining Area



Dimensions: 9'11" x 8'2"
Area: 81 sq. ft
Counted as living area: Yes

Heated: Yes
Finished: Yes
Enclosed: Yes
Contiguous: Yes
Permitted: Yes
Wet space: No
Addition: No
Conversion: No

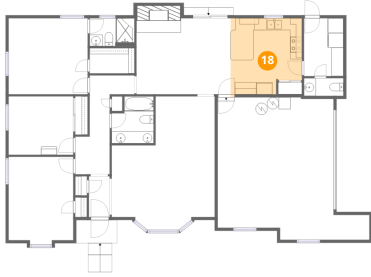
17 Floor 1 - Primary Bedroom



Dimensions: 13'3" x 12'8"
Area: 169 sq. ft
Counted as living area: Yes

Heated: Yes
Finished: Yes
Enclosed: Yes
Contiguous: Yes
Permitted: Yes
Wet space: No
Addition: No
Conversion: No

18 Floor 1 - Kitchen



Dimensions: 11'11" x 12'9"
Area: 142 sq. ft
Counted as living area: Yes

Heated: Yes
Finished: Yes
Enclosed: Yes
Contiguous: Yes
Permitted: Yes
Wet space: No
Addition: No
Conversion: No

19 Floor 1 - Foyer



Dimensions: 3'6" x 6'10"
Area: 24 sq. ft
Counted as living area: Yes

Heated: Yes
Finished: Yes
Enclosed: Yes
Contiguous: Yes
Permitted: Yes
Wet space: No
Addition: No
Conversion: No