

Home data report

1 Weaver Crescent, Kanata Lakes, Kanata, Ontario, Canada, K2K 3E1



Total Area: 1333 sq. ft

Basement 1: 389 sq. ft, 1st Floor: 944 sq. ft

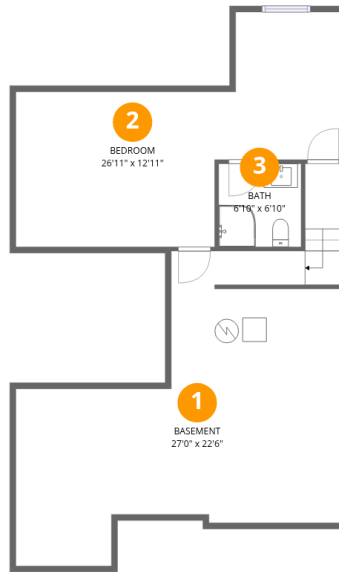
Excluded: Basement 505 sq. ft, Garage 186 sq. ft, Walls: 161 sq. ft

Property summary



Home data report

1 Weaver Crescent, Kanata Lakes, Kanata, Ontario, Canada, K2K 3E1



Room dimensions

Floor 1 Below grade

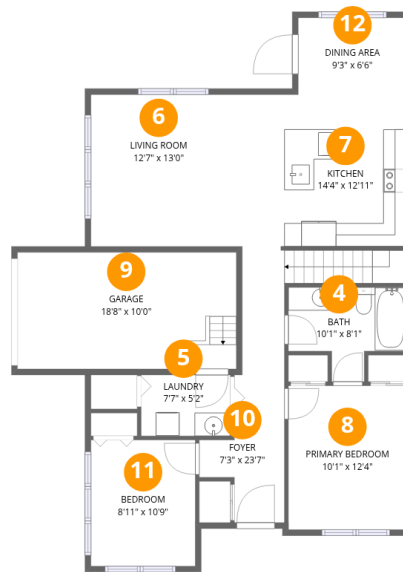
Total:389sqft

Excluded: 505sqft

#		Dimensions	sqft	Counted as living area
1	Basement	27'0" x 22'6"	607 sq. ft	No
2	Bedroom	26'11" x 12'11"	347 sq. ft	Yes
3	Bath	6'10" x 6'10"	47 sq. ft	Yes

Home data report

1 Weaver Crescent, Kanata Lakes, Kanata, Ontario, Canada, K2K 3E1



Room dimensions

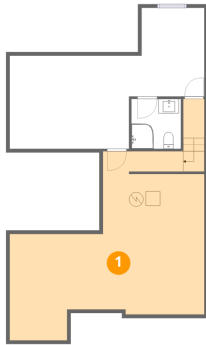
Floor 2

Total:944sqft Excluded: 186sqft

#		Dimensions	sqft	Counted as living area
4	Bath	10'1" x 8'1"	81 sq. ft	Yes
5	Laundry	7'7" x 5'2"	39 sq. ft	Yes
6	Living Room	12'7" x 13'0"	163 sq. ft	Yes
7	Kitchen	14'4" x 12'11"	186 sq. ft	Yes
8	Primary Bedroom	10'1" x 12'4"	124 sq. ft	Yes
9	Garage	18'8" x 10'0"	186 sq. ft	No
10	Foyer	7'3" x 23'7"	171 sq. ft	Yes
11	Bedroom	8'11" x 10'9"	96 sq. ft	Yes
12	Dining Area	9'3" x 6'6"	60 sq. ft	Yes

1 Weaver Crescent, Kanata Lakes, Kanata, Ontario, Canada, K2K 3E1

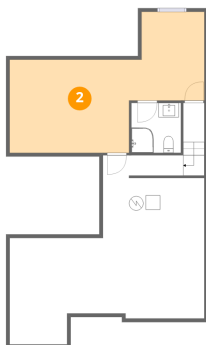
1 Floor 1 - Basement



Dimensions: 27'0" x 22'6"
Area: 607 sq. ft
Counted as living area: No

Heated: Yes
Finished: No
Enclosed: Yes
Contiguous: Yes
Permitted: Yes
Wet space: No
Addition: No
Conversion: No

2 Floor 1 - Bedroom

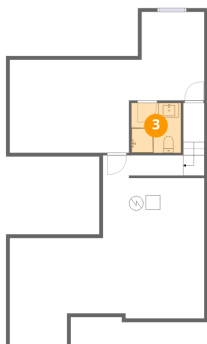


Dimensions: 26'11" x 12'11"
Area: 347 sq. ft
Counted as living area: No

Heated: Yes
Finished: Yes
Enclosed: Yes
Contiguous: No
Permitted: Yes
Wet space: No
Addition: No
Conversion: No

1 Weaver Crescent, Kanata Lakes, Kanata, Ontario, Canada, K2K 3E1

3 Floor 1 - Bath



Dimensions: 6'10" x 6'10"
Area: 47 sq. ft
Counted as living area: No

Heated: Yes
Finished: Yes
Enclosed: Yes
Contiguous: No
Permitted: Yes
Wet space: Yes
Addition: No
Conversion: No

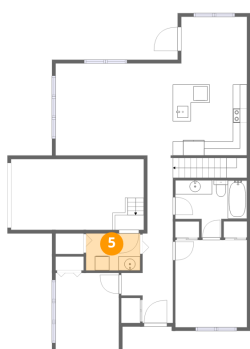
4 Floor 2 - Bath



Dimensions: 10'1" x 8'1"
Area: 81 sq. ft
Counted as living area: Yes

Heated: Yes
Finished: Yes
Enclosed: Yes
Contiguous: Yes
Permitted: Yes
Wet space: Yes
Addition: No
Conversion: No

5 Floor 2 - Laundry

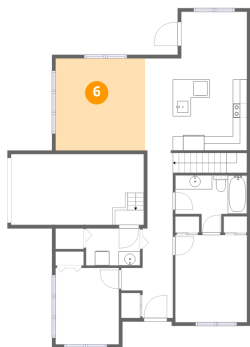


Dimensions: 7'7" x 5'2"
Area: 39 sq. ft
Counted as living area: Yes

Heated: Yes
Finished: Yes
Enclosed: Yes
Contiguous: Yes
Permitted: Yes
Wet space: No
Addition: No
Conversion: No

1 Weaver Crescent, Kanata Lakes, Kanata, Ontario, Canada, K2K 3E1

6 Floor 2 - Living Room



Dimensions: 12'7" x 13'0"
Area: 163 sq. ft
Counted as living area: Yes

Heated: Yes
Finished: Yes
Enclosed: Yes
Contiguous: Yes
Permitted: Yes
Wet space: No
Addition: No
Conversion: No

7 Floor 2 - Kitchen



Dimensions: 14'4" x 12'11"
Area: 186 sq. ft
Counted as living area: Yes

Heated: Yes
Finished: Yes
Enclosed: Yes
Contiguous: Yes
Permitted: Yes
Wet space: No
Addition: No
Conversion: No

8 Floor 2 - Primary Bedroom



Dimensions: 10'1" x 12'4"
Area: 124 sq. ft
Counted as living area: Yes

Heated: Yes
Finished: Yes
Enclosed: Yes
Contiguous: Yes
Permitted: Yes
Wet space: No
Addition: No
Conversion: No

1 Weaver Crescent, Kanata Lakes, Kanata, Ontario, Canada, K2K 3E1

9 Floor 2 - Garage



Dimensions: 18'8" x 10'0"
Area: 186 sq. ft
Counted as living area: No

Heated: No
Finished: No
Enclosed: Yes
Contiguous: Yes
Permitted: Yes
Wet space: No
Addition: No
Conversion: No

10 Floor 2 - Foyer



Dimensions: 7'3" x 23'7"
Area: 171 sq. ft
Counted as living area: Yes

Heated: Yes
Finished: Yes
Enclosed: Yes
Contiguous: Yes
Permitted: Yes
Wet space: No
Addition: No
Conversion: No

11 Floor 2 - Bedroom

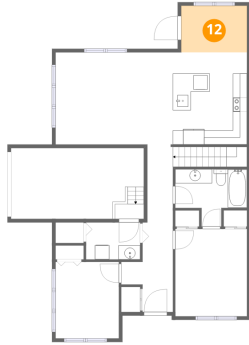


Dimensions: 8'11" x 10'9"
Area: 96 sq. ft
Counted as living area: Yes

Heated: Yes
Finished: Yes
Enclosed: Yes
Contiguous: Yes
Permitted: Yes
Wet space: No
Addition: No
Conversion: No

1 Weaver Crescent, Kanata Lakes, Kanata, Ontario, Canada, K2K 3E1

12 Floor 2 - Dining Area



Dimensions: 9'3" x 6'6"
Area: 60 sq. ft
Counted as living area: Yes

Heated: Yes
Finished: Yes
Enclosed: Yes
Contiguous: Yes
Permitted: Yes
Wet space: No
Addition: No
Conversion: No