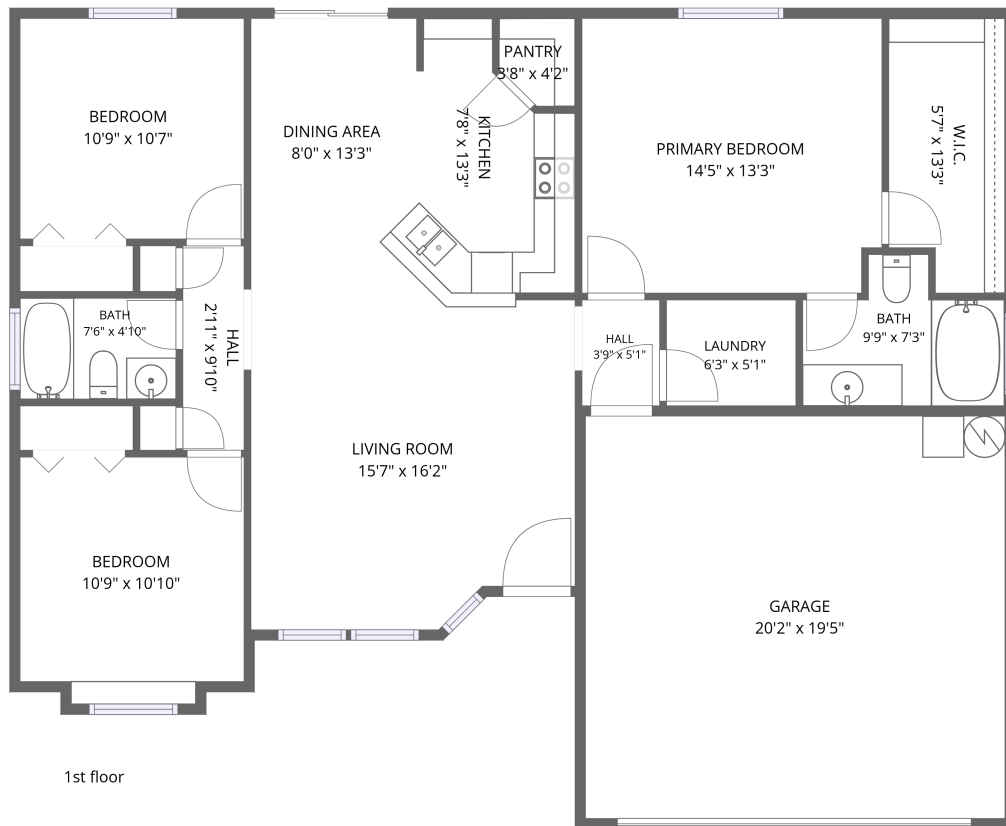


Home data report

702 W Crimson Loop, Nampa, ID, US



Total Area: 1196 sq. ft

1st Floor: 1196 sq. ft

Excluded: Garage 392 sq. ft, Walls: 105 sq. ft

Property summary

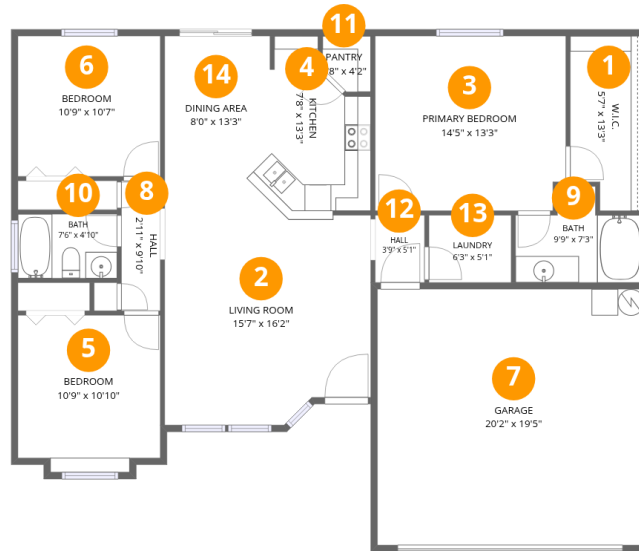
 **1** Floors

 **3** Bedrooms

 **2** Bathrooms

 **1** Garages

702 W Crimson Loop, Nampa, ID, US



Room dimensions

Floor 1

Total: 1196sqft

Excluded: 392sqft

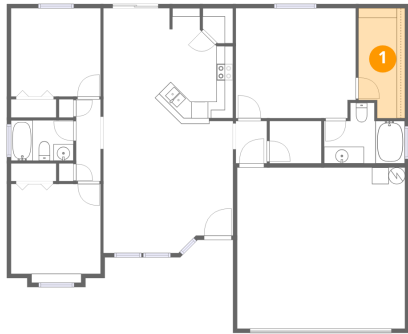
#		Dimensions	sqft	Counted as living area
1	W.I.C.	5'7" x 13'3"	69 sq. ft	Yes
2	Living Room	15'7" x 16'2"	241 sq. ft	Yes
3	Primary Bedroom	14'5" x 13'3"	189 sq. ft	Yes
4	Kitchen	7'8" x 13'3"	84 sq. ft	Yes
5	Bedroom	10'9" x 10'10"	123 sq. ft	Yes
6	Bedroom	10'9" x 10'7"	115 sq. ft	Yes
7	Garage	20'2" x 19'5"	392 sq. ft	No
8	Hall	2'11" x 9'10"	29 sq. ft	Yes
9	Bath	9'9" x 7'3"	56 sq. ft	Yes
10	Bath	7'6" x 4'10"	36 sq. ft	Yes
11	Pantry	3'8" x 4'2"	14 sq. ft	Yes

Home data report

702 W Crimson Loop,Nampa,ID,US

#		Dimensions	sqft	Counted as living area
12	Hall	3'9" x 5'1"	19 sq. ft	Yes
13	Laundry	6'3" x 5'1"	32 sq. ft	Yes
14	Dining Area	8'0" x 13'3"	106 sq. ft	Yes

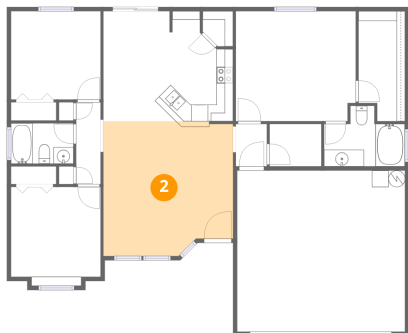
1 Floor 1 - W.I.C.



Dimensions: 5'7" x 13'3"
Area: 69 sq. ft
Counted as living area: Yes

Heated: Yes
Finished: Yes
Enclosed: Yes
Contiguous: Yes
Permitted: Yes
Wet space: No
Addition: No
Conversion: No

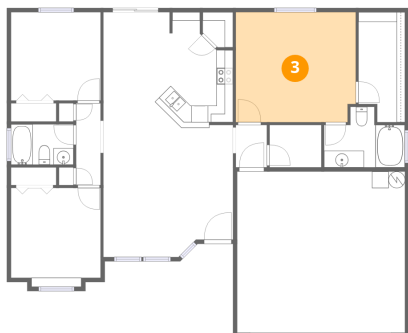
2 Floor 1 - Living Room



Dimensions: 15'7" x 16'2"
Area: 241 sq. ft
Counted as living area: Yes

Heated: Yes
Finished: Yes
Enclosed: Yes
Contiguous: Yes
Permitted: Yes
Wet space: No
Addition: No
Conversion: No

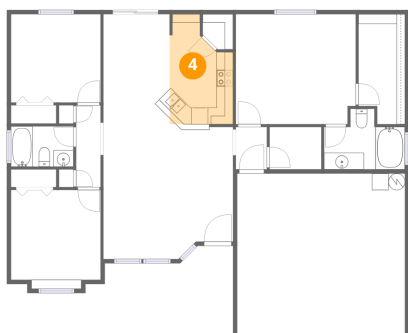
3 Floor 1 - Primary Bedroom



Dimensions: 14'5" x 13'3"
Area: 189 sq. ft
Counted as living area: Yes

Heated: Yes
Finished: Yes
Enclosed: Yes
Contiguous: Yes
Permitted: Yes
Wet space: No
Addition: No
Conversion: No

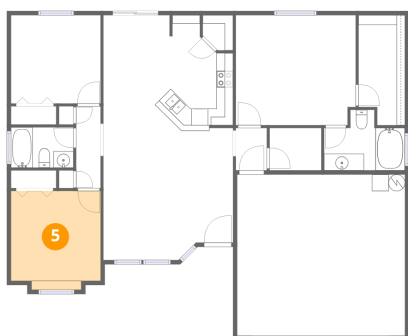
4 Floor 1 - Kitchen



Dimensions: 7'8" x 13'3"
Area: 84 sq. ft
Counted as living area: Yes

Heated: Yes
Finished: Yes
Enclosed: Yes
Contiguous: Yes
Permitted: Yes
Wet space: No
Addition: No
Conversion: No

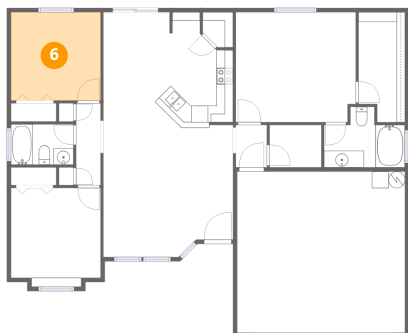
5 Floor 1 - Bedroom



Dimensions: 10'9" x 10'10"
Area: 123 sq. ft
Counted as living area: Yes

Heated: Yes
Finished: Yes
Enclosed: Yes
Contiguous: Yes
Permitted: Yes
Wet space: No
Addition: No
Conversion: No

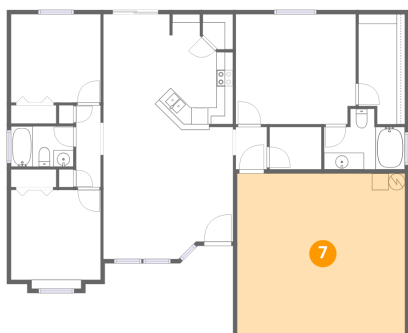
6 Floor 1 - Bedroom



Dimensions: 10'9" x 10'7"
Area: 115 sq. ft
Counted as living area: Yes

Heated: Yes
Finished: Yes
Enclosed: Yes
Contiguous: Yes
Permitted: Yes
Wet space: No
Addition: No
Conversion: No

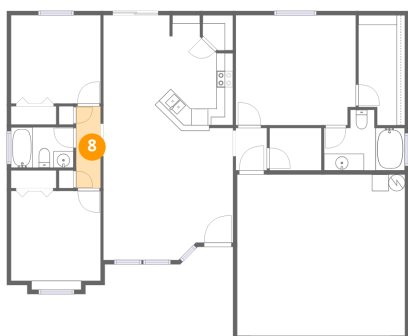
7 Floor 1 - Garage



Dimensions: 20'2" x 19'5"
Area: 392 sq. ft
Counted as living area: No

Heated: No
Finished: No
Enclosed: Yes
Contiguous: Yes
Permitted: Yes
Wet space: No
Addition: No
Conversion: No

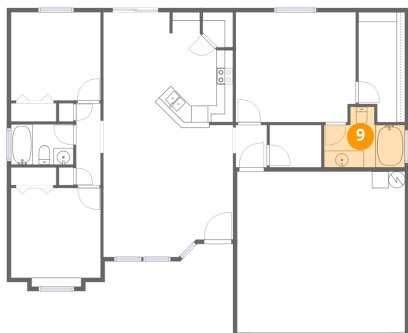
8 Floor 1 - Hall



Dimensions: 2'11" x 9'10"
Area: 29 sq. ft
Counted as living area: Yes

Heated: Yes
Finished: Yes
Enclosed: Yes
Contiguous: Yes
Permitted: Yes
Wet space: No
Addition: No
Conversion: No

9 Floor 1 - Bath



Dimensions: 9'9" x 7'3"
Area: 56 sq. ft
Counted as living area: Yes

Heated: Yes
Finished: Yes
Enclosed: Yes
Contiguous: Yes
Permitted: Yes
Wet space: Yes
Addition: No
Conversion: No

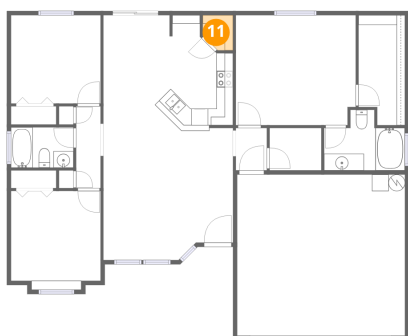
10 Floor 1 - Bath



Dimensions: 7'6" x 4'10"
Area: 36 sq. ft
Counted as living area: Yes

Heated: Yes
Finished: Yes
Enclosed: Yes
Contiguous: Yes
Permitted: Yes
Wet space: Yes
Addition: No
Conversion: No

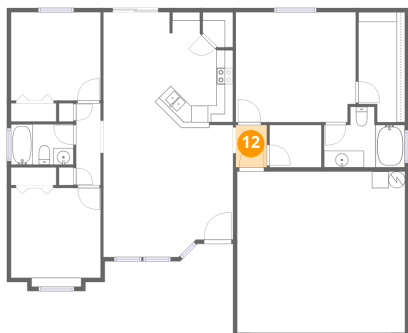
11 Floor 1 - Pantry



Dimensions: 3'8" x 4'2"
Area: 14 sq. ft
Counted as living area: Yes

Heated: Yes
Finished: Yes
Enclosed: Yes
Contiguous: Yes
Permitted: Yes
Wet space: No
Addition: No
Conversion: No

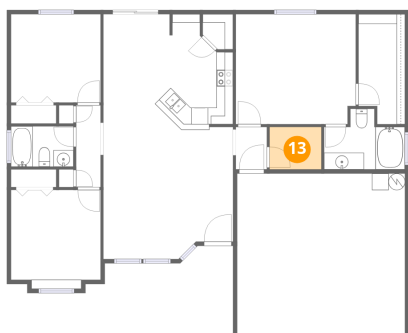
12 Floor 1 - Hall



Dimensions: 3'9" x 5'1"
Area: 19 sq. ft
Counted as living area: Yes

Heated: Yes
Finished: Yes
Enclosed: Yes
Contiguous: Yes
Permitted: Yes
Wet space: No
Addition: No
Conversion: No

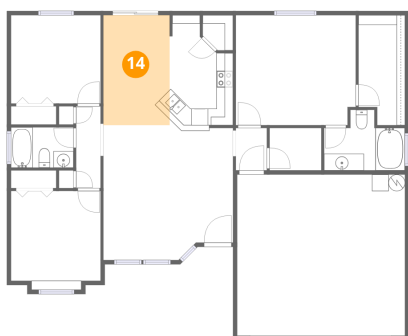
13 Floor 1 - Laundry



Dimensions: 6'3" x 5'1"
Area: 32 sq. ft
Counted as living area: Yes

Heated: Yes
Finished: Yes
Enclosed: Yes
Contiguous: Yes
Permitted: Yes
Wet space: No
Addition: No
Conversion: No

14 Floor 1 - Dining Area



Dimensions: 8'0" x 13'3"
Area: 106 sq. ft
Counted as living area: Yes

Heated: Yes
Finished: Yes
Enclosed: Yes
Contiguous: Yes
Permitted: Yes
Wet space: No
Addition: No
Conversion: No