

3338 Muskrat Creek Dr, Fort Collins, CO, US



Total Area: 4266 sq. ft

Basement: 1341 sq. ft, 1st Floor: 1481 sq. ft, 2nd Floor: 1444 sq. ft

Excluded: Utility 85 sq. ft, Garage 613 sq. ft, Porch 63 sq. ft, Covered patio 162 sq. ft, Fireplace 9 sq. ft, Open to below 342 sq. ft, Walls: 296 sq. ft

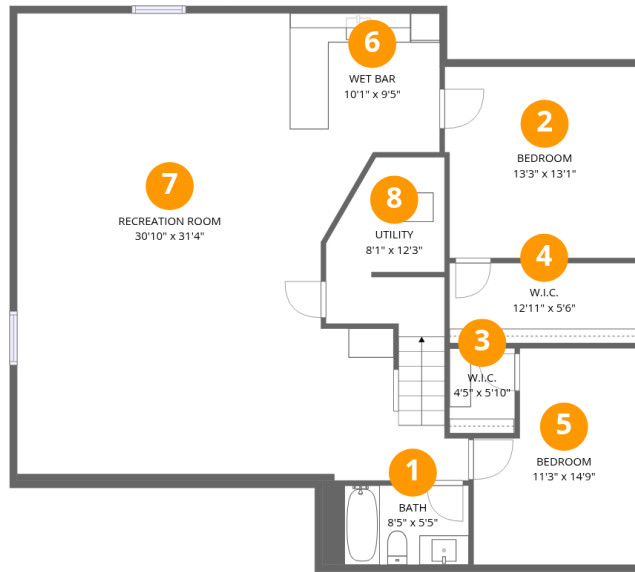
Property summary

 **3** Floors

 **7** Bedrooms

 **4** Bathrooms

 **1** Garages



Room dimensions

Floor 1 Below grade

Total:1341sqft Excluded: 85sqft

#		Dimensions	sqft	Counted as living area
1	Bath	8'5" x 5'5"	54 sq. ft	Yes
2	Bedroom	13'3" x 13'1"	170 sq. ft	Yes
3	W.I.C.	4'5" x 5'10"	26 sq. ft	Yes
4	W.I.C.	12'11" x 5'6"	71 sq. ft	Yes
5	Bedroom	11'3" x 14'9"	147 sq. ft	Yes
6	Wet Bar	10'1" x 9'5"	92 sq. ft	Yes
7	Recreation Room	30'10" x 31'4"	745 sq. ft	Yes
8	Utility	8'1" x 12'3"	83 sq. ft	No



Room dimensions

Floor 2

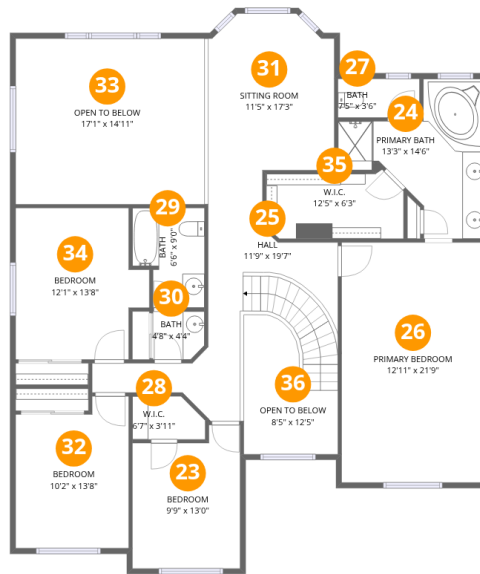
Total: 1481 sqft Excluded: 847 sqft

#		Dimensions	sqft	Counted as living area
9	Foyer	8'6" x 12'7"	125 sq. ft	Yes
10	Kitchen	12'11" x 13'11"	176 sq. ft	Yes
11	Living Room	12'11" x 12'2"	143 sq. ft	Yes
12	Bedroom	9'2" x 16'6"	135 sq. ft	Yes
13	Family Room	16'8" x 15'0"	259 sq. ft	Yes
14	Laundry	8'2" x 7'2"	53 sq. ft	Yes
15	Covered Patio	13'3" x 12'3"	162 sq. ft	No
16	Bath	6'11" x 5'6"	38 sq. ft	Yes
17	Dining Area	12'11" x 10'1"	130 sq. ft	Yes
18	Garage	30'10" x 20'7"	613 sq. ft	No
19	Breakfast Nook	12'8" x 14'10"	175 sq. ft	Yes

Home data report

3338 Muskrat Creek Dr, Fort Collins, CO, US

#		Dimensions	sqft	Counted as living area
20	Porch	9'1" x 6'2"	63 sq. ft	No
21	Hall	11'4" x 13'3"	117 sq. ft	Yes
22	Pantry	8'1" x 4'8"	38 sq. ft	Yes



Room dimensions

Floor 3

Total: 1444sqft

Excluded: 342sqft

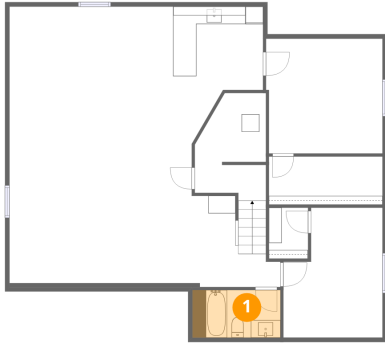
#		Dimensions	sqft	Counted as living area
23	Bedroom	9'9" x 13'0"	115 sq. ft	Yes
24	Primary Bath	13'3" x 14'6"	118 sq. ft	Yes
25	Hall	11'9" x 19'7"	184 sq. ft	Yes
26	Primary Bedroom	12'11" x 21'9"	280 sq. ft	Yes
27	Bath	7'5" x 3'6"	26 sq. ft	Yes
28	W.I.C.	6'7" x 3'11"	23 sq. ft	Yes
29	Bath	6'6" x 9'0"	52 sq. ft	Yes
30	Bath	4'8" x 4'4"	19 sq. ft	Yes
31	Sitting Room	11'5" x 17'3"	168 sq. ft	Yes
32	Bedroom	10'2" x 13'8"	129 sq. ft	Yes
33	Open To Below	17'1" x 14'11"	261 sq. ft	No

Home data report

3338 Muskrat Creek Dr, Fort Collins, CO, US

#		Dimensions	sqft	Counted as living area
34	Bedroom	12'1" x 13'8"	147 sq. ft	Yes
35	W.I.C.	12'5" x 6'3"	72 sq. ft	Yes
36	Open To Below	8'5" x 12'5"	81 sq. ft	No

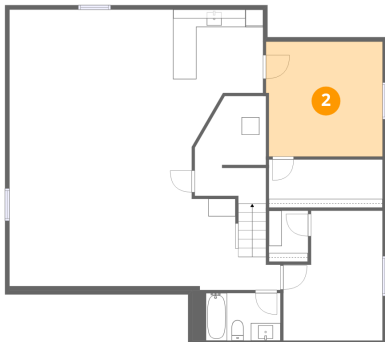
1 Floor 1 - Bath



Dimensions: 8'5" x 5'5"
Area: 54 sq. ft
Counted as living area: Yes

Heated: Yes
Finished: Yes
Enclosed: Yes
Contiguous: Yes
Permitted: Yes
Wet space: Yes
Addition: No
Conversion: No

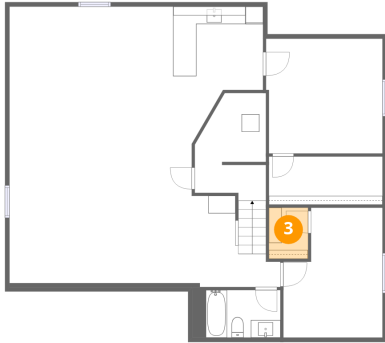
2 Floor 1 - Bedroom



Dimensions: 13'3" x 13'1"
Area: 170 sq. ft
Counted as living area: Yes

Heated: Yes
Finished: Yes
Enclosed: Yes
Contiguous: Yes
Permitted: Yes
Wet space: No
Addition: No
Conversion: No

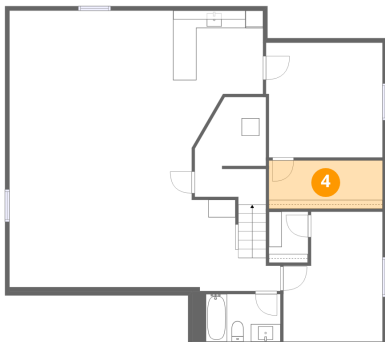
3 Floor 1 - W.I.C.



Dimensions: 4'5" x 5'10"
Area: 26 sq. ft
Counted as living area: Yes

Heated: Yes
Finished: Yes
Enclosed: Yes
Contiguous: Yes
Permitted: Yes
Wet space: No
Addition: No
Conversion: No

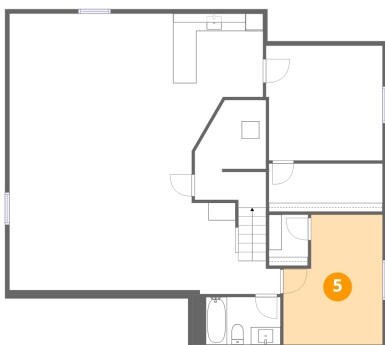
4 Floor 1 - W.I.C.



Dimensions: 12'11" x 5'6"
Area: 71 sq. ft
Counted as living area: Yes

Heated: Yes
Finished: Yes
Enclosed: Yes
Contiguous: Yes
Permitted: Yes
Wet space: No
Addition: No
Conversion: No

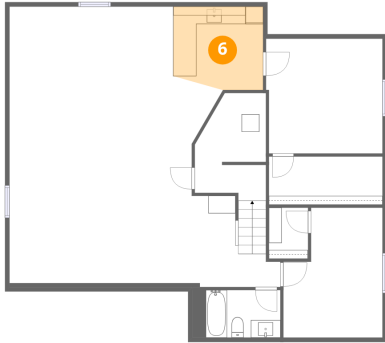
5 Floor 1 - Bedroom



Dimensions: 11'3" x 14'9"
Area: 147 sq. ft
Counted as living area: Yes

Heated: Yes
Finished: Yes
Enclosed: Yes
Contiguous: Yes
Permitted: Yes
Wet space: No
Addition: No
Conversion: No

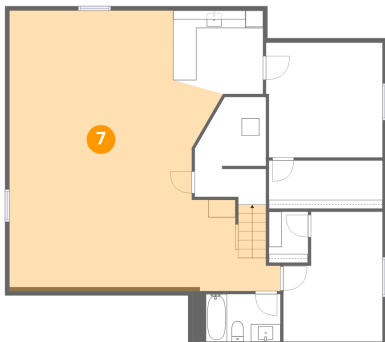
6 Floor 1 - Wet Bar



Dimensions: 10'1" x 9'5"
Area: 92 sq. ft
Counted as living area: Yes

Heated: Yes
Finished: Yes
Enclosed: Yes
Contiguous: Yes
Permitted: Yes
Wet space: No
Addition: No
Conversion: No

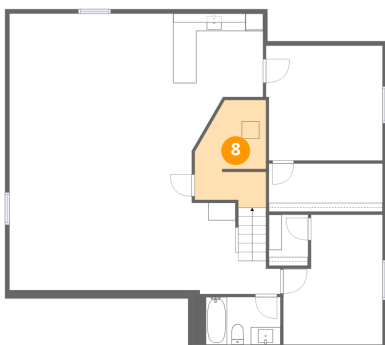
7 Floor 1 - Recreation Room



Dimensions: 30'10" x 31'4"
Area: 745 sq. ft
Counted as living area: Yes

Heated: Yes
Finished: Yes
Enclosed: Yes
Contiguous: Yes
Permitted: Yes
Wet space: No
Addition: No
Conversion: No

8 Floor 1 - Utility



Dimensions: 8'1" x 12'3"
Area: 83 sq. ft
Counted as living area: No

Heated: Yes
Finished: No
Enclosed: Yes
Contiguous: Yes
Permitted: Yes
Wet space: No
Addition: No
Conversion: No

9 Floor 2 - Foyer



Dimensions: 8'6" x 12'7"
Area: 125 sq. ft
Counted as living area: Yes

Heated: Yes
Finished: Yes
Enclosed: Yes
Contiguous: Yes
Permitted: Yes
Wet space: No
Addition: No
Conversion: No

10 Floor 2 - Kitchen



Dimensions: 12'11" x 13'11"
Area: 176 sq. ft
Counted as living area: Yes

Heated: Yes
Finished: Yes
Enclosed: Yes
Contiguous: Yes
Permitted: Yes
Wet space: No
Addition: No
Conversion: No

11 Floor 2 - Living Room



Dimensions: 12'11" x 12'2"
Area: 143 sq. ft
Counted as living area: Yes

Heated: Yes
Finished: Yes
Enclosed: Yes
Contiguous: Yes
Permitted: Yes
Wet space: No
Addition: No
Conversion: No

12 Floor 2 - Bedroom



Dimensions: 9'2" x 16'6"
Area: 135 sq. ft
Counted as living area: Yes

Heated: Yes
Finished: Yes
Enclosed: Yes
Contiguous: Yes
Permitted: Yes
Wet space: No
Addition: No
Conversion: No

13 Floor 2 - Family Room



Dimensions: 16'8" x 15'0"
Area: 259 sq. ft
Counted as living area: Yes

Heated: Yes
Finished: Yes
Enclosed: Yes
Contiguous: Yes
Permitted: Yes
Wet space: No
Addition: No
Conversion: No

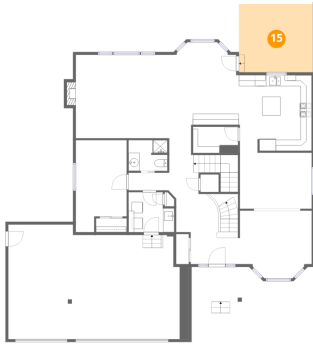
14 Floor 2 - Laundry



Dimensions: 8'2" x 7'2"
Area: 53 sq. ft
Counted as living area: Yes

Heated: Yes
Finished: Yes
Enclosed: Yes
Contiguous: Yes
Permitted: Yes
Wet space: No
Addition: No
Conversion: No

15 Floor 2 - Covered Patio



Dimensions: 13'3" x 12'3"
Area: 162 sq. ft
Counted as living area: No

Heated: No
Finished: No
Enclosed: No
Contiguous: Yes
Permitted: Yes
Wet space: No
Addition: No
Conversion: No

16 Floor 2 - Bath



Dimensions: 6'11" x 5'6"
Area: 38 sq. ft
Counted as living area: Yes

Heated: Yes
Finished: Yes
Enclosed: Yes
Contiguous: Yes
Permitted: Yes
Wet space: Yes
Addition: No
Conversion: No

17 Floor 2 - Dining Area



Dimensions: 12'11" x 10'1"
Area: 130 sq. ft
Counted as living area: Yes

Heated: Yes
Finished: Yes
Enclosed: Yes
Contiguous: Yes
Permitted: Yes
Wet space: No
Addition: No
Conversion: No

18 Floor 2 - Garage



Dimensions: 30'10" x 20'7"
Area: 613 sq. ft
Counted as living area: No

Heated: No
Finished: No
Enclosed: Yes
Contiguous: Yes
Permitted: Yes
Wet space: No
Addition: No
Conversion: No

19 Floor 2 - Breakfast Nook



Dimensions: 12'8" x 14'10"
Area: 175 sq. ft
Counted as living area: Yes

Heated: Yes
Finished: Yes
Enclosed: Yes
Contiguous: Yes
Permitted: Yes
Wet space: No
Addition: No
Conversion: No

20 Floor 2 - Porch



Dimensions: 9'1" x 6'2"
Area: 63 sq. ft
Counted as living area: No

Heated: No
Finished: No
Enclosed: No
Contiguous: Yes
Permitted: Yes
Wet space: No
Addition: No
Conversion: No

21 Floor 2 - Hall



Dimensions: 11'4" x 13'3"
Area: 117 sq. ft
Counted as living area: Yes

Heated: Yes
Finished: Yes
Enclosed: Yes
Contiguous: Yes
Permitted: Yes
Wet space: No
Addition: No
Conversion: No

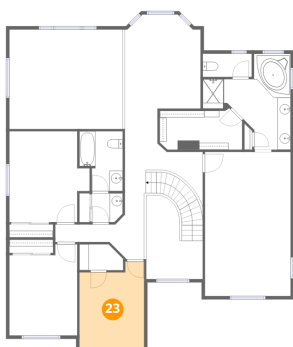
22 Floor 2 - Pantry



Dimensions: 8'1" x 4'8"
Area: 38 sq. ft
Counted as living area: Yes

Heated: Yes
Finished: Yes
Enclosed: Yes
Contiguous: Yes
Permitted: Yes
Wet space: No
Addition: No
Conversion: No

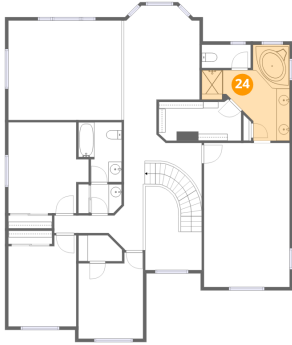
23 Floor 3 - Bedroom



Dimensions: 9'9" x 13'0"
Area: 115 sq. ft
Counted as living area: Yes

Heated: Yes
Finished: Yes
Enclosed: Yes
Contiguous: Yes
Permitted: Yes
Wet space: No
Addition: No
Conversion: No

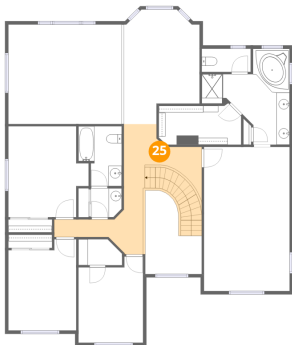
24 Floor 3 - Primary Bath



Dimensions: 13'3" x 14'6"
Area: 118 sq. ft
Counted as living area: Yes

Heated: Yes
Finished: Yes
Enclosed: Yes
Contiguous: Yes
Permitted: Yes
Wet space: Yes
Addition: No
Conversion: No

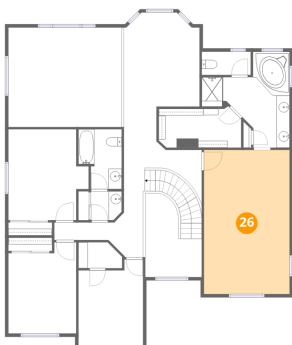
25 Floor 3 - Hall



Dimensions: 11'9" x 19'7"
Area: 184 sq. ft
Counted as living area: Yes

Heated: Yes
Finished: Yes
Enclosed: Yes
Contiguous: Yes
Permitted: Yes
Wet space: No
Addition: No
Conversion: No

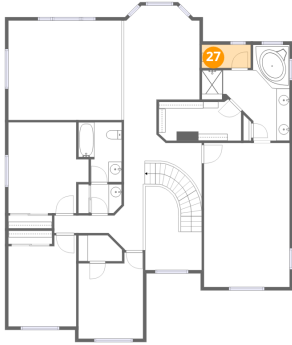
26 Floor 3 - Primary Bedroom



Dimensions: 12'11" x 21'9"
Area: 280 sq. ft
Counted as living area: Yes

Heated: Yes
Finished: Yes
Enclosed: Yes
Contiguous: Yes
Permitted: Yes
Wet space: No
Addition: No
Conversion: No

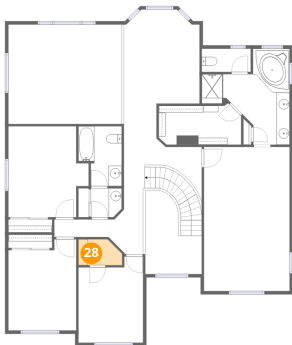
27 Floor 3 - Bath



Dimensions: 7'5" x 3'6"
Area: 26 sq. ft
Counted as living area: Yes

Heated: Yes
Finished: Yes
Enclosed: Yes
Contiguous: Yes
Permitted: Yes
Wet space: Yes
Addition: No
Conversion: No

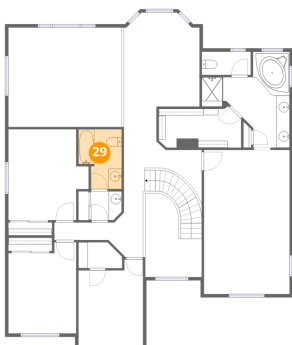
28 Floor 3 - W.I.C.



Dimensions: 6'7" x 3'11"
Area: 23 sq. ft
Counted as living area: Yes

Heated: Yes
Finished: Yes
Enclosed: Yes
Contiguous: Yes
Permitted: Yes
Wet space: No
Addition: No
Conversion: No

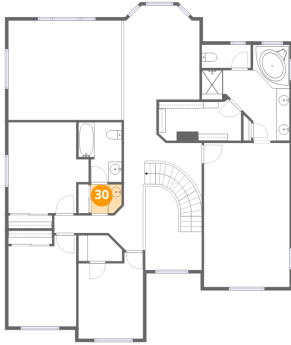
29 Floor 3 - Bath



Dimensions: 6'6" x 9'0"
Area: 52 sq. ft
Counted as living area: Yes

Heated: Yes
Finished: Yes
Enclosed: Yes
Contiguous: Yes
Permitted: Yes
Wet space: Yes
Addition: No
Conversion: No

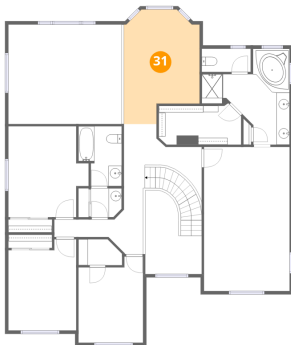
30 Floor 3 - Bath



Dimensions: 4'8" x 4'4"
Area: 19 sq. ft
Counted as living area: Yes

Heated: Yes
Finished: Yes
Enclosed: Yes
Contiguous: Yes
Permitted: Yes
Wet space: Yes
Addition: No
Conversion: No

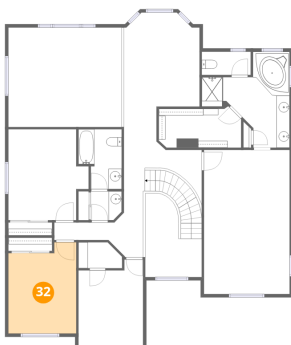
31 Floor 3 - Sitting Room



Dimensions: 11'5" x 17'3"
Area: 168 sq. ft
Counted as living area: Yes

Heated: Yes
Finished: Yes
Enclosed: Yes
Contiguous: Yes
Permitted: Yes
Wet space: No
Addition: No
Conversion: No

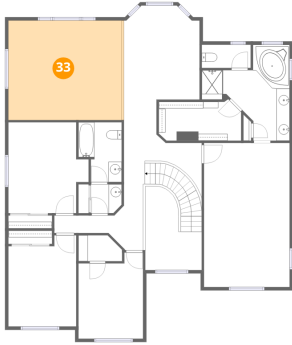
32 Floor 3 - Bedroom



Dimensions: 10'2" x 13'8"
Area: 129 sq. ft
Counted as living area: Yes

Heated: Yes
Finished: Yes
Enclosed: Yes
Contiguous: Yes
Permitted: Yes
Wet space: No
Addition: No
Conversion: No

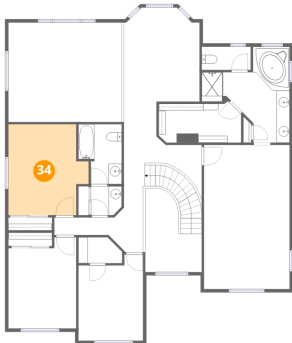
33 Floor 3 - Open To Below



Dimensions: 17'1" x 14'11"
Area: 261 sq. ft
Counted as living area: No

Heated: No
Finished: No
Enclosed: No
Contiguous: Yes
Permitted: No
Wet space: No
Addition: No
Conversion: No

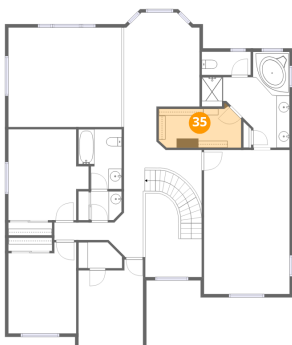
34 Floor 3 - Bedroom



Dimensions: 12'1" x 13'8"
Area: 147 sq. ft
Counted as living area: Yes

Heated: Yes
Finished: Yes
Enclosed: Yes
Contiguous: Yes
Permitted: Yes
Wet space: No
Addition: No
Conversion: No

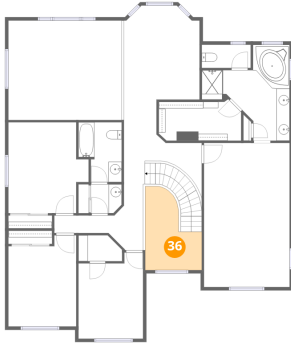
35 Floor 3 - W.I.C.



Dimensions: 12'5" x 6'3"
Area: 72 sq. ft
Counted as living area: Yes

Heated: Yes
Finished: Yes
Enclosed: Yes
Contiguous: Yes
Permitted: Yes
Wet space: No
Addition: No
Conversion: No

36 Floor 3 - Open To Below



Dimensions: 8'5" x 12'5"
Area: 81 sq. ft
Counted as living area: No

Heated: No
Finished: No
Enclosed: No
Contiguous: Yes
Permitted: No
Wet space: No
Addition: No
Conversion: No