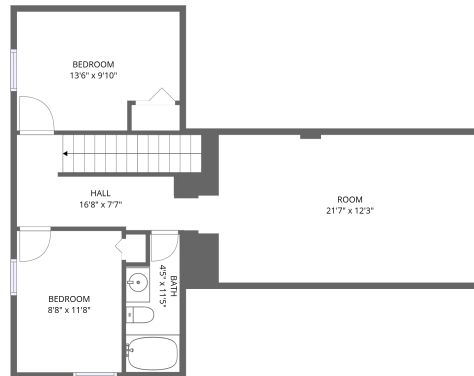
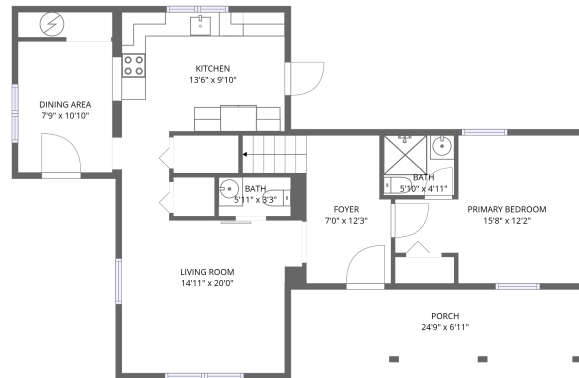


Home data report

1 Depot Ave, Front Royal, VA, US



2nd floor



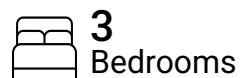
1st floor

Total Area: 1361 sq. ft

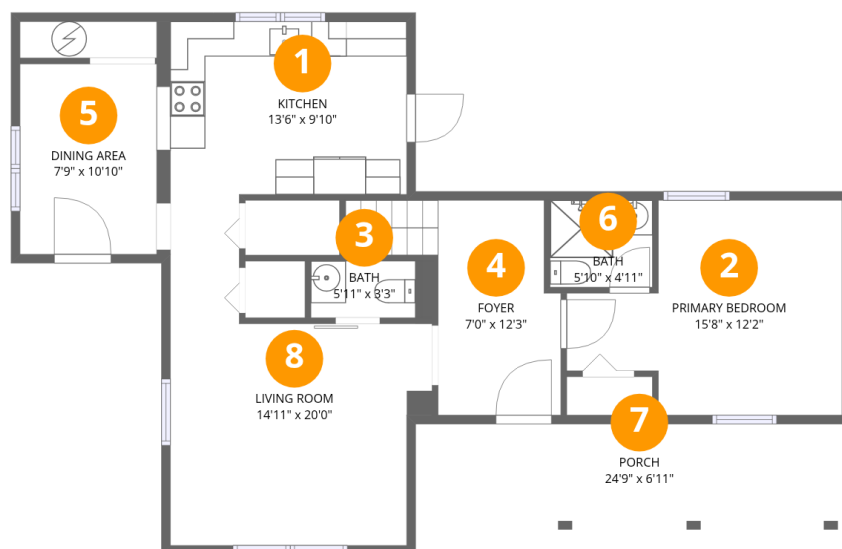
1st Floor: 818 sq. ft, 2nd Floor: 543 sq. ft

Excluded: Porch 171 sq. ft, Low ceiling 161 sq. ft, Walls: 146 sq. ft

Property summary



1 Depot Ave, Front Royal, VA, US



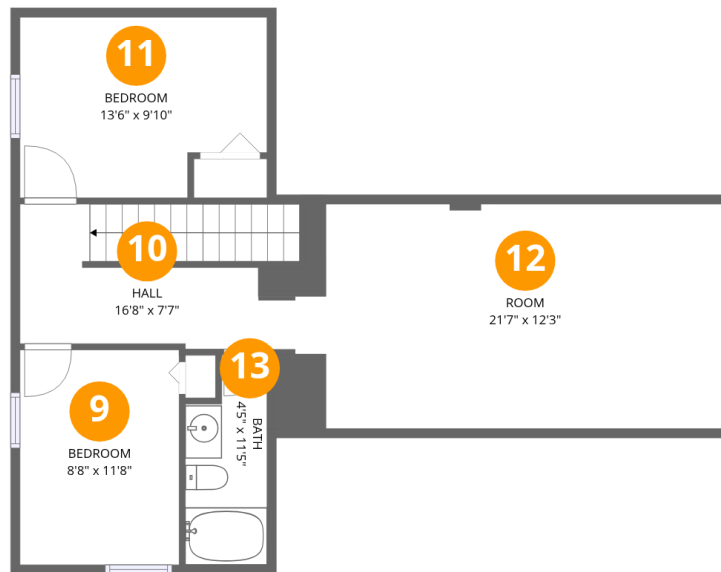
Room dimensions

Floor 1

Total: 818 sqft Excluded: 171 sqft

#		Dimensions	sqft	Counted as living area
1	Kitchen	13'6" x 9'10"	133 sq. ft	Yes
2	Primary Bedroom	15'8" x 12'2"	191 sq. ft	Yes
3	Bath	5'11" x 3'3"	19 sq. ft	Yes
4	Foyer	7'0" x 12'3"	85 sq. ft	Yes
5	Dining Area	7'9" x 10'10"	84 sq. ft	Yes
6	Bath	5'10" x 4'11"	29 sq. ft	Yes
7	Porch	24'9" x 6'11"	170 sq. ft	No
8	Living Room	14'11" x 20'0"	298 sq. ft	Yes

1 Depot Ave,Front Royal,VA,US



Room dimensions

Floor 2

Total:543sqft

Excluded: 161sqft

#		Dimensions	sqft	Counted as living area
9	Bedroom	8'8" x 11'8"	101 sq. ft	Yes
10	Hall	16'8" x 7'7"	126 sq. ft	Yes
11	Bedroom	13'6" x 9'10"	132 sq. ft	Yes
12	Room	21'7" x 12'3"	264 sq. ft	Yes
13	Bath	4'5" x 11'5"	50 sq. ft	Yes

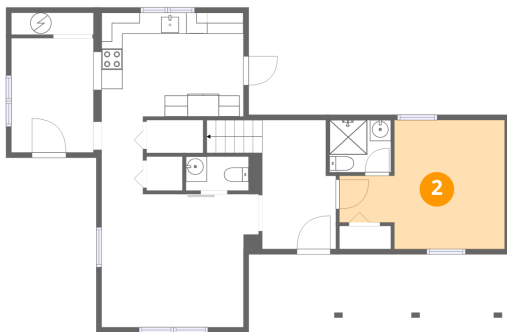
1 Floor 1 - Kitchen



Dimensions: 13'6" x 9'10"
Area: 133 sq. ft
Counted as living area: Yes

Heated: Yes
Finished: Yes
Enclosed: Yes
Contiguous: Yes
Permitted: Yes
Wet space: No
Addition: No
Conversion: No

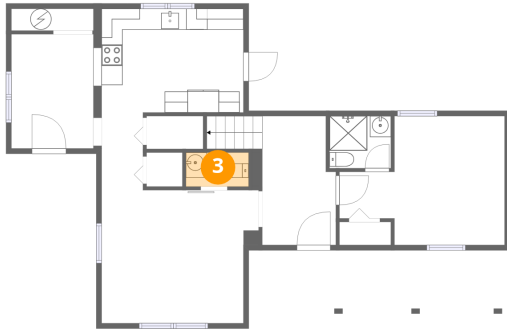
2 Floor 1 - Primary Bedroom



Dimensions: 15'8" x 12'2"
Area: 191 sq. ft
Counted as living area: Yes

Heated: Yes
Finished: Yes
Enclosed: Yes
Contiguous: Yes
Permitted: Yes
Wet space: No
Addition: No
Conversion: No

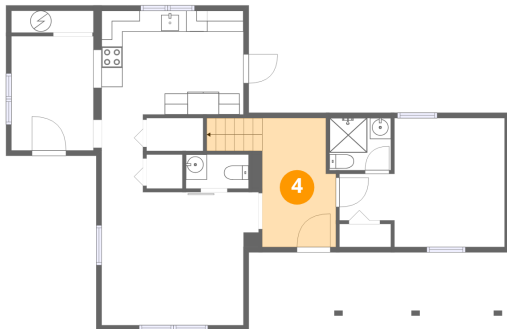
3 Floor 1 - Bath



Dimensions: 5'11" x 3'3"
Area: 19 sq. ft
Counted as living area: Yes

Heated: Yes
Finished: Yes
Enclosed: Yes
Contiguous: Yes
Permitted: Yes
Wet space: Yes
Addition: No
Conversion: No

4 Floor 1 - Foyer



Dimensions: 7'0" x 12'3"
Area: 85 sq. ft
Counted as living area: Yes

Heated: Yes
Finished: Yes
Enclosed: Yes
Contiguous: Yes
Permitted: Yes
Wet space: No
Addition: No
Conversion: No

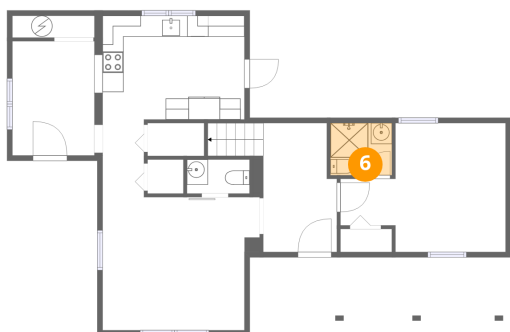
5 Floor 1 - Dining Area



Dimensions: 7'9" x 10'10"
Area: 84 sq. ft
Counted as living area: Yes

Heated: Yes
Finished: Yes
Enclosed: Yes
Contiguous: Yes
Permitted: Yes
Wet space: No
Addition: No
Conversion: No

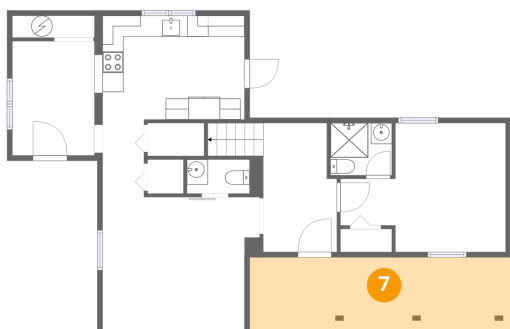
6 Floor 1 - Bath



Dimensions: 5'10" x 4'11"
Area: 29 sq. ft
Counted as living area: Yes

Heated: Yes
Finished: Yes
Enclosed: Yes
Contiguous: Yes
Permitted: Yes
Wet space: Yes
Addition: No
Conversion: No

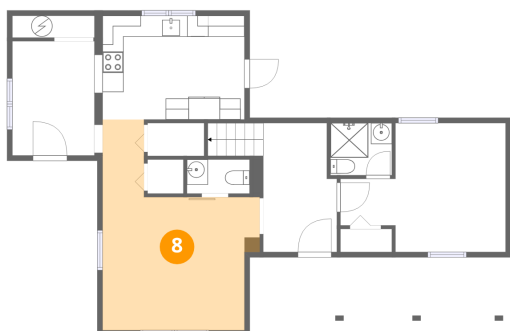
7 Floor 1 - Porch



Dimensions: 24'9" x 6'11"
Area: 170 sq. ft
Counted as living area: No

Heated: No
Finished: No
Enclosed: No
Contiguous: Yes
Permitted: Yes
Wet space: No
Addition: No
Conversion: No

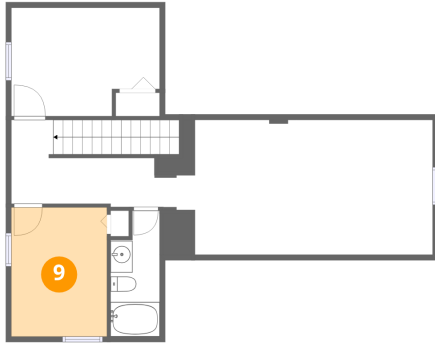
8 Floor 1 - Living Room



Dimensions: 14'11" x 20'0"
Area: 298 sq. ft
Counted as living area: Yes

Heated: Yes
Finished: Yes
Enclosed: Yes
Contiguous: Yes
Permitted: Yes
Wet space: No
Addition: No
Conversion: No

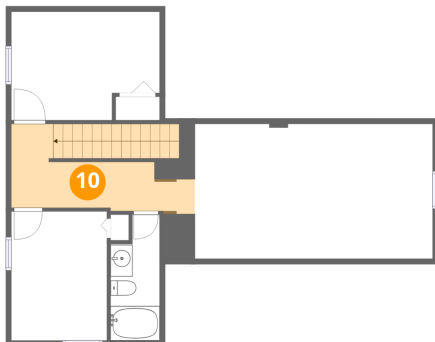
9 Floor 2 - Bedroom



Dimensions: 8'8" x 11'8"
Area: 101 sq. ft
Counted as living area: Yes

Heated: Yes
Finished: Yes
Enclosed: Yes
Contiguous: Yes
Permitted: Yes
Wet space: No
Addition: No
Conversion: No

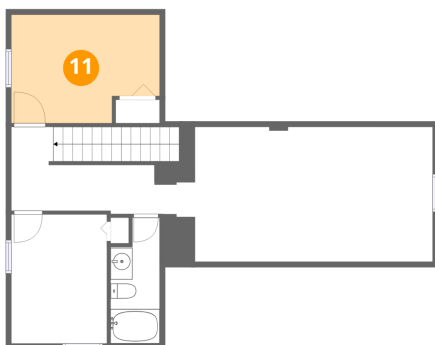
10 Floor 2 - Hall



Dimensions: 16'8" x 7'7"
Area: 126 sq. ft
Counted as living area: Yes

Heated: Yes
Finished: Yes
Enclosed: Yes
Contiguous: Yes
Permitted: Yes
Wet space: No
Addition: No
Conversion: No

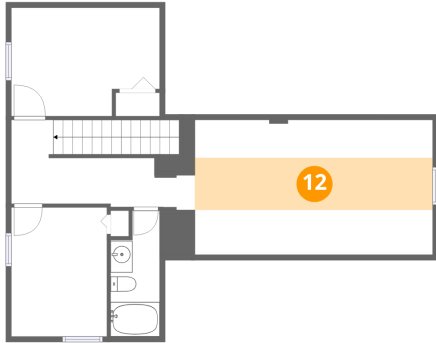
11 Floor 2 - Bedroom



Dimensions: 13'6" x 9'10"
Area: 132 sq. ft
Counted as living area: Yes

Heated: Yes
Finished: Yes
Enclosed: Yes
Contiguous: Yes
Permitted: Yes
Wet space: No
Addition: No
Conversion: No

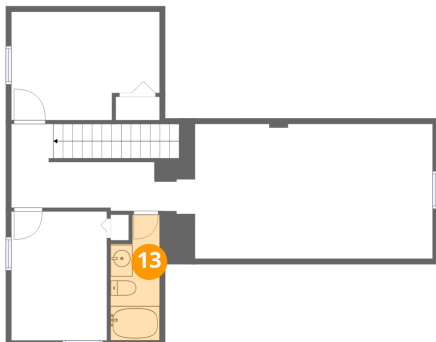
12 Floor 2 - Room



Dimensions: 21'7" x 12'3"
Area: 264 sq. ft
Counted as living area: Yes

Heated: Yes
Finished: Yes
Enclosed: Yes
Contiguous: Yes
Permitted: Yes
Wet space: No
Addition: No
Conversion: No

13 Floor 2 - Bath



Dimensions: 4'5" x 11'5"
Area: 50 sq. ft
Counted as living area: Yes

Heated: Yes
Finished: Yes
Enclosed: Yes
Contiguous: Yes
Permitted: Yes
Wet space: Yes
Addition: No
Conversion: No