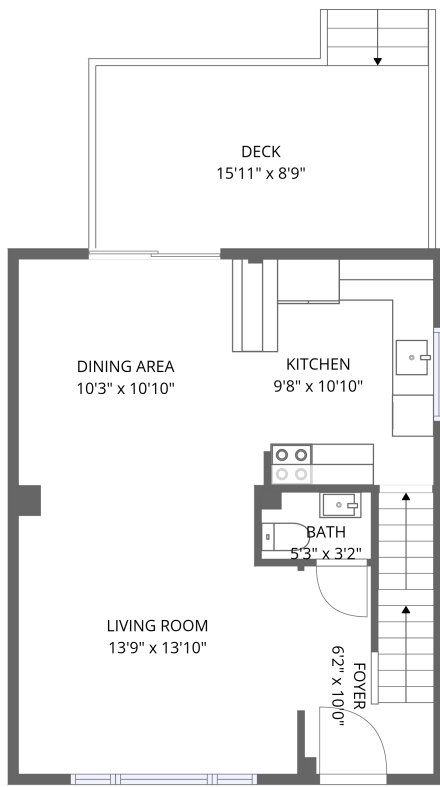
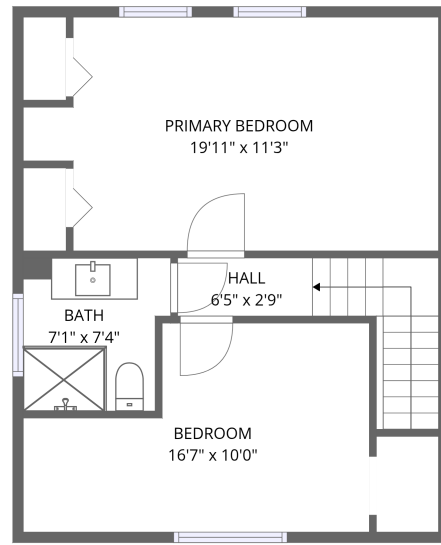


Home data report

295 Cyr Avenue, Overbrook, Kingsview Park, Vanier, Ontario, Canada, K1L 7N6



1st floor



2nd floor

Total Area: 970 sq. ft

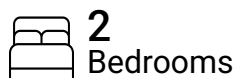
1st Floor: 492 sq. ft, 2nd Floor: 478 sq. ft

Excluded: Deck 140 sq. ft, Low ceiling 14 sq. ft, Walls: 90 sq. ft

Property summary



2
Floors



2
Bedrooms



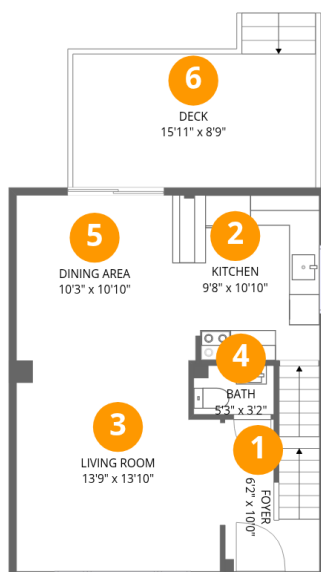
1
Bathrooms



1
Half baths

Home data report

295 Cyr Avenue, Overbrook, Kingsview Park, Vanier, Ontario, Canada, K1L 7N6



Room dimensions

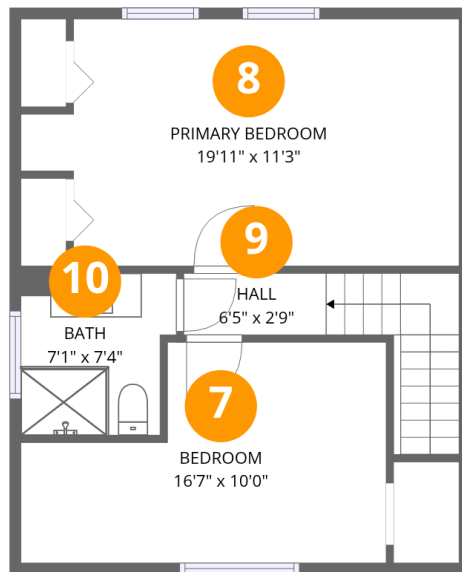
Floor 1

Total:492sqft Excluded: 140sqft

#		Dimensions	sqft	Counted as living area
1	Foyer	6'2" x 10'0"	62 sq. ft	Yes
2	Kitchen	9'8" x 10'10"	105 sq. ft	Yes
3	Living Room	13'9" x 13'10"	190 sq. ft	Yes
4	Bath	5'3" x 3'2"	17 sq. ft	Yes
5	Dining Area	10'3" x 10'10"	111 sq. ft	Yes
6	Deck	15'11" x 8'9"	139 sq. ft	No

Home data report

295 Cyr Avenue, Overbrook, Kingsview Park, Vanier, Ontario, Canada, K1L 7N6



Room dimensions

Floor 2

Total:478sqft Excluded: 14sqft

#		Dimensions	sqft	Counted as living area
7	Bedroom	16'7" x 10'0"	166 sq. ft	Yes
8	Primary Bedroom	19'11" x 11'3"	223 sq. ft	Yes
9	Hall	6'5" x 2'9"	18 sq. ft	Yes
10	Bath	7'1" x 7'4"	52 sq. ft	Yes

295 Cyr Avenue, Overbrook, Kingsview Park, Vanier, Ontario,
Canada, K1L 7N6

1 Floor 1 - Foyer



Dimensions: 6'2" x 10'0"
Area: 62 sq. ft
Counted as living area: Yes

Heated: Yes
Finished: Yes
Enclosed: Yes
Contiguous: Yes
Permitted: Yes
Wet space: No
Addition: No
Conversion: No

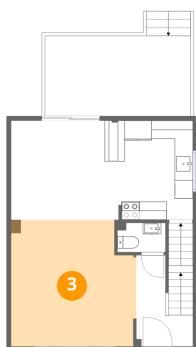
2 Floor 1 - Kitchen



Dimensions: 9'8" x 10'10"
Area: 105 sq. ft
Counted as living area: Yes

Heated: Yes
Finished: Yes
Enclosed: Yes
Contiguous: Yes
Permitted: Yes
Wet space: No
Addition: No
Conversion: No

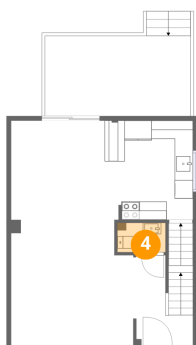
3 Floor 1 - Living Room



Dimensions: 13'9" x 13'10"
Area: 190 sq. ft
Counted as living area: Yes

Heated: Yes
Finished: Yes
Enclosed: Yes
Contiguous: Yes
Permitted: Yes
Wet space: No
Addition: No
Conversion: No

4 Floor 1 - Bath



Dimensions: 5'3" x 3'2"
Area: 17 sq. ft
Counted as living area: Yes

Heated: Yes
Finished: Yes
Enclosed: Yes
Contiguous: Yes
Permitted: Yes
Wet space: Yes
Addition: No
Conversion: No

5 Floor 1 - Dining Area



Dimensions: 10'3" x 10'10"
Area: 111 sq. ft
Counted as living area: Yes

Heated: Yes
Finished: Yes
Enclosed: Yes
Contiguous: Yes
Permitted: Yes
Wet space: No
Addition: No
Conversion: No

295 Cyr Avenue, Overbrook, Kingsview Park, Vanier, Ontario, Canada, K1L 7N6

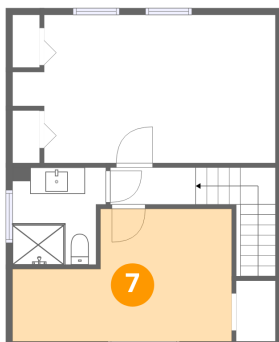
6 Floor 1 - Deck



Dimensions: 15'11" x 8'9"
Area: 139 sq. ft
Counted as living area: No

Heated: No
Finished: No
Enclosed: No
Contiguous: Yes
Permitted: Yes
Wet space: No
Addition: No
Conversion: No

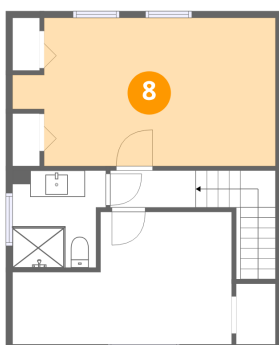
7 Floor 2 - Bedroom



Dimensions: 16'7" x 10'0"
Area: 166 sq. ft
Counted as living area: Yes

Heated: Yes
Finished: Yes
Enclosed: Yes
Contiguous: Yes
Permitted: Yes
Wet space: No
Addition: No
Conversion: No

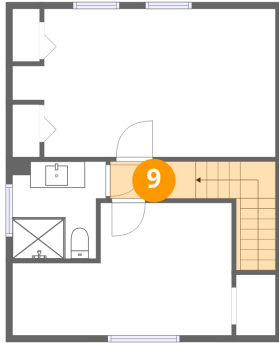
8 Floor 2 - Primary Bedroom



Dimensions: 19'11" x 11'3"
Area: 223 sq. ft
Counted as living area: Yes

Heated: Yes
Finished: Yes
Enclosed: Yes
Contiguous: Yes
Permitted: Yes
Wet space: No
Addition: No
Conversion: No

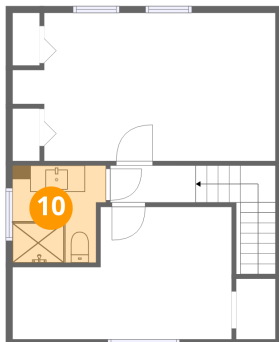
9 Floor 2 - Hall



Dimensions: 6'5" x 2'9"
Area: 18 sq. ft
Counted as living area: Yes

Heated: Yes
Finished: Yes
Enclosed: Yes
Contiguous: Yes
Permitted: Yes
Wet space: No
Addition: No
Conversion: No

10 Floor 2 - Bath



Dimensions: 7'1" x 7'4"
Area: 52 sq. ft
Counted as living area: Yes

Heated: Yes
Finished: Yes
Enclosed: Yes
Contiguous: Yes
Permitted: Yes
Wet space: Yes
Addition: No
Conversion: No