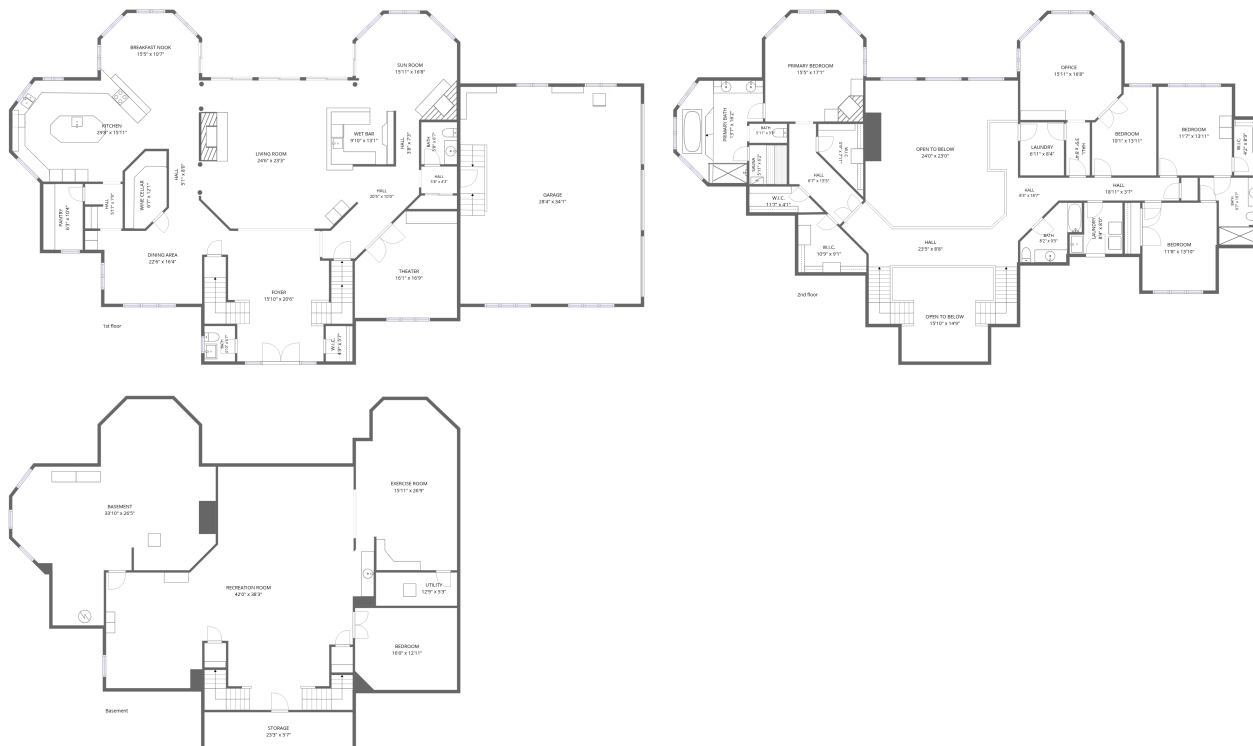


14 Woodcock Ln, Setauket- East Setauket, NY, US



Total Area: 6843 sq. ft

Basement: 1812 sq. ft, 1st Floor: 2727 sq. ft, 2nd Floor: 2304 sq. ft

Excluded: Storage 130 sq. ft, Basement 707 sq. ft, Utility 67 sq. ft, Wine cellar 69 sq. ft, Garage 968 sq. ft, Open to below 680 sq. ft, Walls: 456 sq. ft

Property summary

 **3** Floors

 **5** Bedrooms

 **3** Bathrooms

Home data report

14 Woodcock Ln,Setauket- East Setauket,NY,US

 **2**
Half baths

 **1**
Garages

14 Woodcock Ln,Setauket- East Setauket,NY,US



Room dimensions

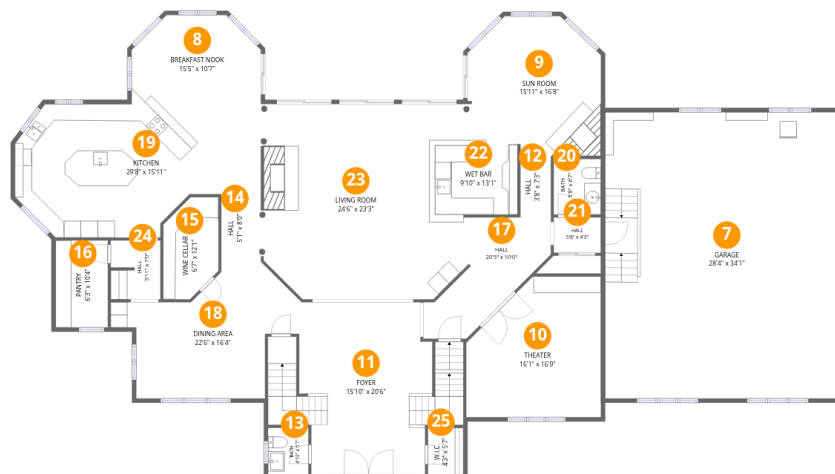
Floor 1 Below grade

Total:1812sqft

Excluded: 904sqft

| # | | Dimensions | sqft | Counted as living area |
|---|-----------------|----------------|-------------|------------------------|
| 1 | Exercise Room | 15'11" x 26'9" | 385 sq. ft | Yes |
| 2 | Bedroom | 16'0" x 12'11" | 202 sq. ft | Yes |
| 3 | Storage | 23'3" x 5'7" | 130 sq. ft | No |
| 4 | Recreation Room | 42'0" x 38'3" | 1132 sq. ft | Yes |
| 5 | Utility | 12'9" x 5'3" | 67 sq. ft | No |
| 6 | Basement | 33'10" x 26'5" | 705 sq. ft | No |

14 Woodcock Ln,Setauket- East Setauket,NY,US



Room dimensions

Floor 2

Total:2727sqft

Excluded: 1037sqft

| # | | Dimensions | sqft | Counted as living area |
|----|----------------|----------------|------------|------------------------|
| 7 | Garage | 28'4" x 34'1" | 968 sq. ft | No |
| 8 | Breakfast Nook | 15'5" x 10'7" | 146 sq. ft | Yes |
| 9 | Sun Room | 15'11" x 16'8" | 220 sq. ft | Yes |
| 10 | Theater | 16'1" x 16'9" | 238 sq. ft | Yes |
| 11 | Foyer | 15'10" x 20'6" | 352 sq. ft | Yes |
| 12 | Hall | 3'8" x 7'3" | 26 sq. ft | Yes |
| 13 | Bath | 4'10" x 5'7" | 27 sq. ft | Yes |
| 14 | Hall | 5'1" x 8'0" | 40 sq. ft | Yes |
| 15 | Wine Cellar | 6'7" x 12'1" | 69 sq. ft | No |
| 16 | Pantry | 6'3" x 10'4" | 65 sq. ft | Yes |
| 17 | Hall | 20'5" x 10'0" | 123 sq. ft | Yes |

Home data report

14 Woodcock Ln,Setauket- East Setauket,NY,US

| # | | Dimensions | sqft | Counted as living area |
|----|-------------|----------------|------------|------------------------|
| 18 | Dining Area | 22'6" x 16'4" | 242 sq. ft | Yes |
| 19 | Kitchen | 29'8" x 15'11" | 392 sq. ft | Yes |
| 20 | Bath | 5'8" x 6'7" | 37 sq. ft | Yes |
| 21 | Hall | 5'8" x 4'3" | 24 sq. ft | Yes |
| 22 | Wet Bar | 9'10" x 13'1" | 117 sq. ft | Yes |
| 23 | Living Room | 24'6" x 23'3" | 497 sq. ft | Yes |
| 24 | Hall | 5'11" x 7'0" | 41 sq. ft | Yes |
| 25 | W.I.C. | 4'3" x 5'7" | 24 sq. ft | Yes |

14 Woodcock Ln,Setauket- East Setauket,NY,US



Room dimensions

Floor 3

Total:2304sqft

Excluded: 680sqft

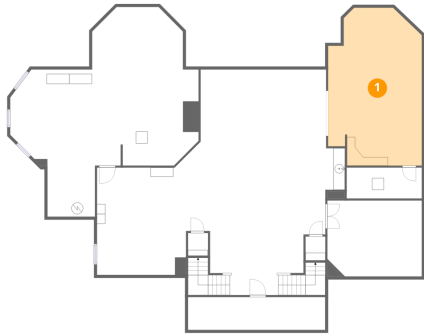
| # | | Dimensions | sqft | Counted as living area |
|----|-----------------|----------------|------------|------------------------|
| 26 | Bedroom | 11'8" x 13'10" | 160 sq. ft | Yes |
| 27 | Bedroom | 10'1" x 13'11" | 123 sq. ft | Yes |
| 28 | Primary Bedroom | 15'5" x 17'1" | 246 sq. ft | Yes |
| 29 | Hall | 23'5" x 8'8" | 265 sq. ft | Yes |
| 30 | W.I.C. | 4'2" x 8'9" | 37 sq. ft | Yes |
| 31 | Bath | 8'2" x 9'5" | 61 sq. ft | Yes |
| 32 | Office | 15'11" x 16'8" | 235 sq. ft | Yes |
| 33 | Hall | 18'11" x 3'7" | 68 sq. ft | Yes |
| 34 | W.I.C. | 11'7" x 4'1" | 40 sq. ft | Yes |
| 35 | Hall | 3'9" x 8'4" | 31 sq. ft | Yes |
| 36 | Sauna | 5'11" x 6'2" | 37 sq. ft | Yes |

Home data report

14 Woodcock Ln,Setauket- East Setauket,NY,US

| # | | Dimensions | sqft | Counted as living area |
|----|---------------|----------------|------------|------------------------|
| 37 | W.I.C. | 10'9" x 9'1" | 78 sq. ft | Yes |
| 38 | Hall | 6'7" x 15'5" | 86 sq. ft | Yes |
| 39 | W.I.C. | 5'9" x 7'11" | 56 sq. ft | Yes |
| 40 | Primary Bath | 13'7" x 16'2" | 174 sq. ft | Yes |
| 41 | Open To Below | 24'0" x 23'0" | 483 sq. ft | No |
| 42 | Bath | 9'7" x 10'7" | 80 sq. ft | Yes |
| 43 | Bath | 5'11" x 3'0" | 18 sq. ft | Yes |
| 44 | Bedroom | 11'7" x 13'11" | 161 sq. ft | Yes |
| 45 | Open To Below | 15'10" x 14'9" | 197 sq. ft | No |
| 46 | Laundry | 8'4" x 8'0" | 55 sq. ft | Yes |
| 47 | Laundry | 6'11" x 8'4" | 58 sq. ft | Yes |
| 48 | Hall | 8'3" x 18'7" | 104 sq. ft | Yes |

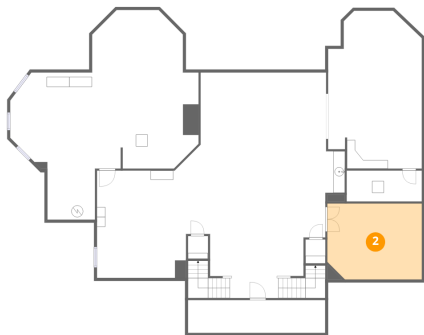
1 Floor 1 - Exercise Room



Dimensions: 15'11" x 26'9"
Area: 385 sq. ft
Counted as living area: Yes

Heated: Yes
Finished: Yes
Enclosed: Yes
Contiguous: Yes
Permitted: Yes
Wet space: No
Addition: No
Conversion: No

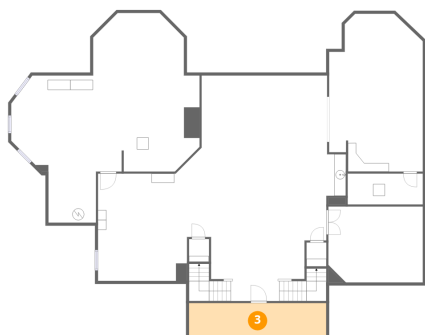
2 Floor 1 - Bedroom



Dimensions: 16'0" x 12'11"
Area: 202 sq. ft
Counted as living area: Yes

Heated: Yes
Finished: Yes
Enclosed: Yes
Contiguous: Yes
Permitted: Yes
Wet space: No
Addition: No
Conversion: No

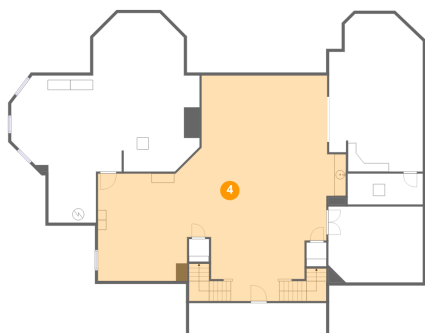
3 Floor 1 - Storage



Dimensions: 23'3" x 5'7"
Area: 130 sq. ft
Counted as living area: No

Heated: No
Finished: No
Enclosed: No
Contiguous: Yes
Permitted: Yes
Wet space: No
Addition: No
Conversion: No

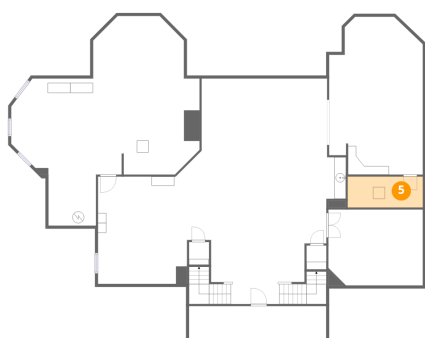
4 Floor 1 - Recreation Room



Dimensions: 42'0" x 38'3"
Area: 1132 sq. ft
Counted as living area: Yes

Heated: Yes
Finished: Yes
Enclosed: Yes
Contiguous: Yes
Permitted: Yes
Wet space: No
Addition: No
Conversion: No

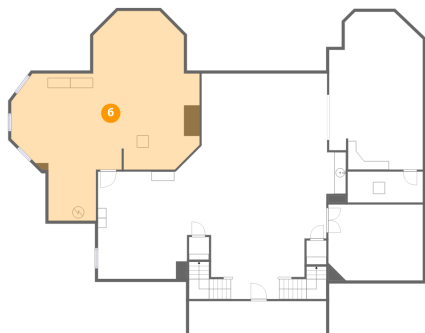
5 Floor 1 - Utility



Dimensions: 12'9" x 5'3"
Area: 67 sq. ft
Counted as living area: No

Heated: Yes
Finished: No
Enclosed: Yes
Contiguous: Yes
Permitted: Yes
Wet space: No
Addition: No
Conversion: No

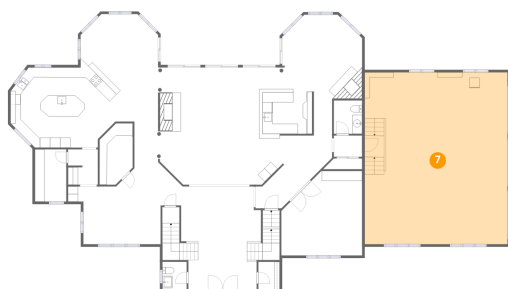
6 Floor 1 - Basement



Dimensions: 33'10" x 26'5"
Area: 705 sq. ft
Counted as living area: No

Heated: Yes
Finished: No
Enclosed: Yes
Contiguous: Yes
Permitted: Yes
Wet space: No
Addition: No
Conversion: No

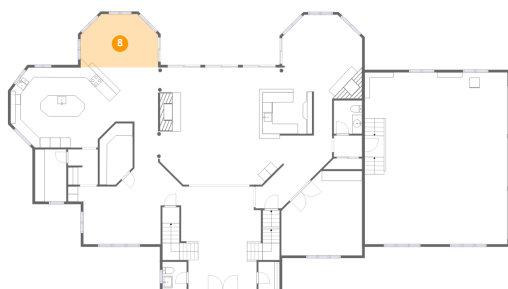
7 Floor 2 - Garage



Dimensions: 28'4" x 34'1"
Area: 968 sq. ft
Counted as living area: No

Heated: No
Finished: No
Enclosed: Yes
Contiguous: Yes
Permitted: Yes
Wet space: No
Addition: No
Conversion: No

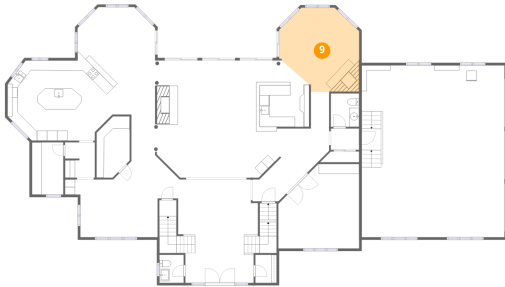
8 Floor 2 - Breakfast Nook



Dimensions: 15'5" x 10'7"
Area: 146 sq. ft
Counted as living area: Yes

Heated: Yes
Finished: Yes
Enclosed: Yes
Contiguous: Yes
Permitted: Yes
Wet space: No
Addition: No
Conversion: No

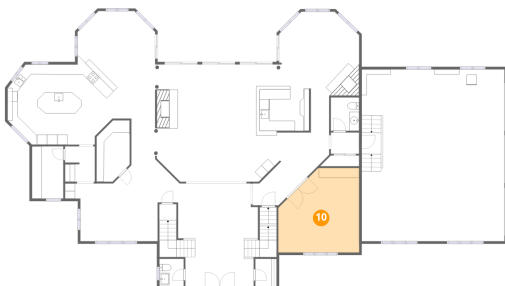
9 Floor 2 - Sun Room



Dimensions: 15'11" x 16'8"
Area: 220 sq. ft
Counted as living area: Yes

Heated: Yes
Finished: Yes
Enclosed: Yes
Contiguous: Yes
Permitted: Yes
Wet space: No
Addition: No
Conversion: No

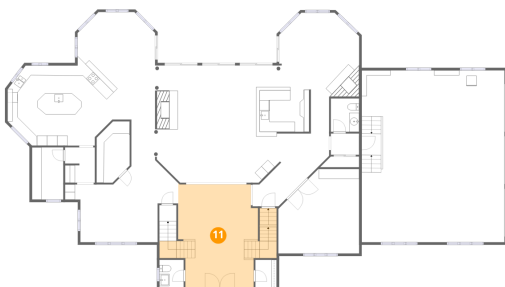
10 Floor 2 - Theater



Dimensions: 16'1" x 16'9"
Area: 238 sq. ft
Counted as living area: Yes

Heated: Yes
Finished: Yes
Enclosed: Yes
Contiguous: Yes
Permitted: Yes
Wet space: No
Addition: No
Conversion: No

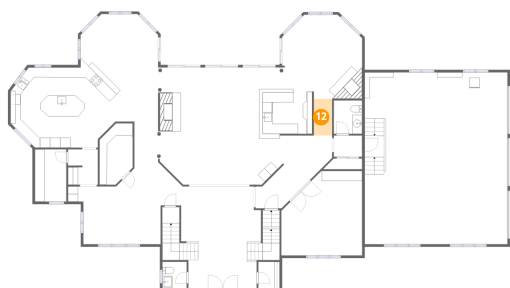
11 Floor 2 - Foyer



Dimensions: 15'10" x 20'6"
Area: 352 sq. ft
Counted as living area: Yes

Heated: Yes
Finished: Yes
Enclosed: Yes
Contiguous: Yes
Permitted: Yes
Wet space: No
Addition: No
Conversion: No

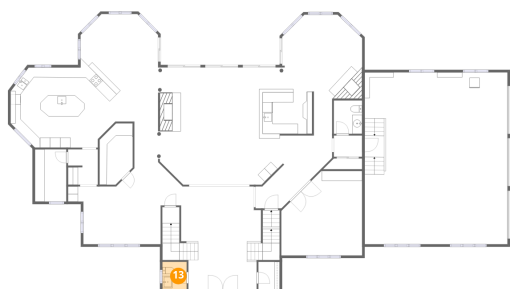
12 Floor 2 - Hall



Dimensions: 3'8" x 7'3"
Area: 26 sq. ft
Counted as living area: Yes

Heated: Yes
Finished: Yes
Enclosed: Yes
Contiguous: Yes
Permitted: Yes
Wet space: No
Addition: No
Conversion: No

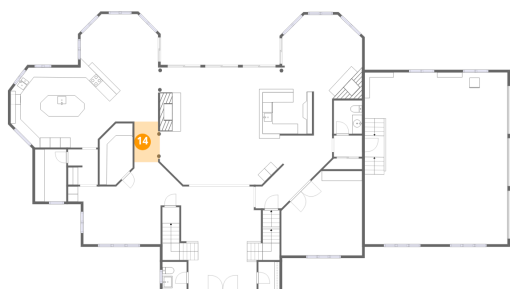
13 Floor 2 - Bath



Dimensions: 4'10" x 5'7"
Area: 27 sq. ft
Counted as living area: Yes

Heated: Yes
Finished: Yes
Enclosed: Yes
Contiguous: Yes
Permitted: Yes
Wet space: Yes
Addition: No
Conversion: No

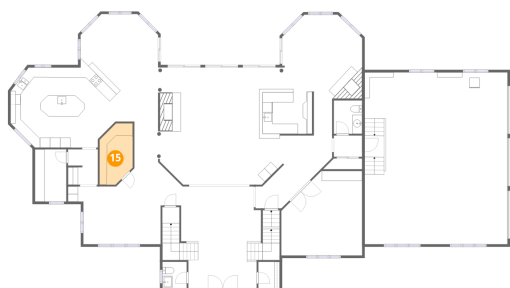
14 Floor 2 - Hall



Dimensions: 5'1" x 8'0"
Area: 40 sq. ft
Counted as living area: Yes

Heated: Yes
Finished: Yes
Enclosed: Yes
Contiguous: Yes
Permitted: Yes
Wet space: No
Addition: No
Conversion: No

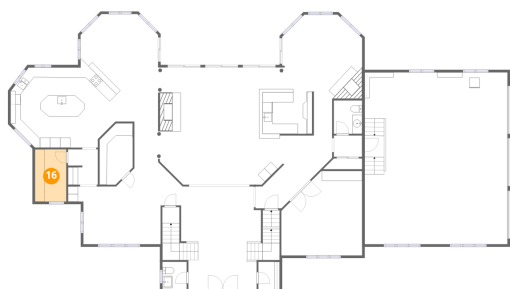
15 Floor 2 - Wine Cellar



Dimensions: 6'7" x 12'1"
Area: 69 sq. ft
Counted as living area: No

Heated: No
Finished: No
Enclosed: Yes
Contiguous: Yes
Permitted: Yes
Wet space: No
Addition: No
Conversion: No

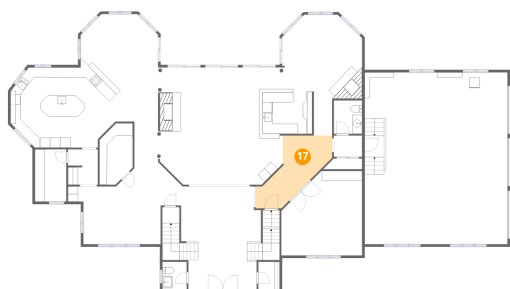
16 Floor 2 - Pantry



Dimensions: 6'3" x 10'4"
Area: 65 sq. ft
Counted as living area: Yes

Heated: Yes
Finished: Yes
Enclosed: Yes
Contiguous: Yes
Permitted: Yes
Wet space: No
Addition: No
Conversion: No

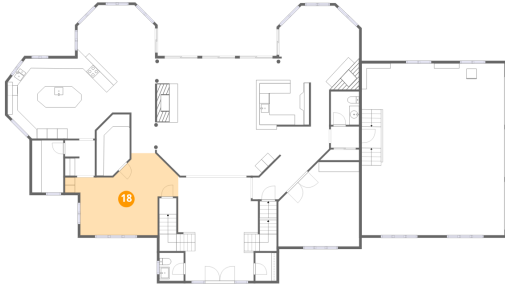
17 Floor 2 - Hall



Dimensions: 20'5" x 10'0"
Area: 123 sq. ft
Counted as living area: Yes

Heated: Yes
Finished: Yes
Enclosed: Yes
Contiguous: Yes
Permitted: Yes
Wet space: No
Addition: No
Conversion: No

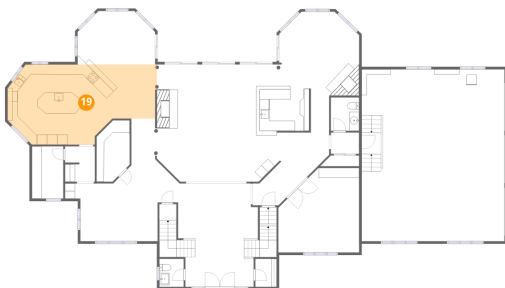
18 Floor 2 - Dining Area



Dimensions: 22'6" x 16'4"
Area: 242 sq. ft
Counted as living area: Yes

Heated: Yes
Finished: Yes
Enclosed: Yes
Contiguous: Yes
Permitted: Yes
Wet space: No
Addition: No
Conversion: No

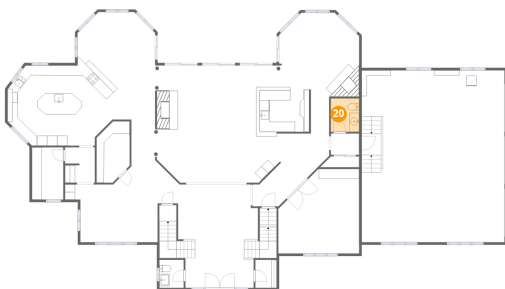
19 Floor 2 - Kitchen



Dimensions: 29'8" x 15'11"
Area: 392 sq. ft
Counted as living area: Yes

Heated: Yes
Finished: Yes
Enclosed: Yes
Contiguous: Yes
Permitted: Yes
Wet space: No
Addition: No
Conversion: No

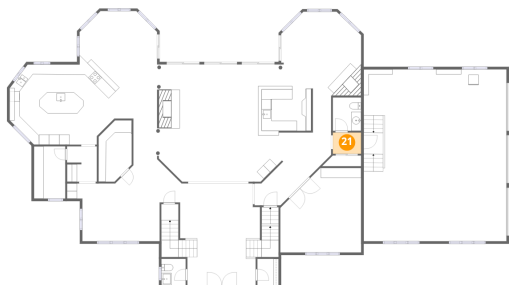
20 Floor 2 - Bath



Dimensions: 5'8" x 6'7"
Area: 37 sq. ft
Counted as living area: Yes

Heated: Yes
Finished: Yes
Enclosed: Yes
Contiguous: Yes
Permitted: Yes
Wet space: Yes
Addition: No
Conversion: No

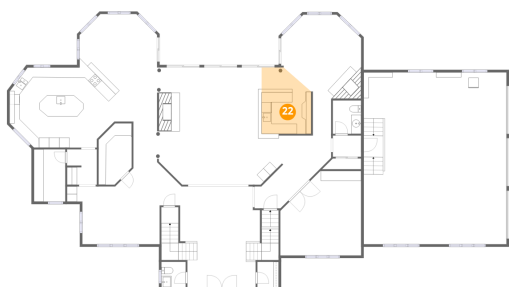
21 Floor 2 - Hall



Dimensions: 5'8" x 4'3"
Area: 24 sq. ft
Counted as living area: Yes

Heated: Yes
Finished: Yes
Enclosed: Yes
Contiguous: Yes
Permitted: Yes
Wet space: No
Addition: No
Conversion: No

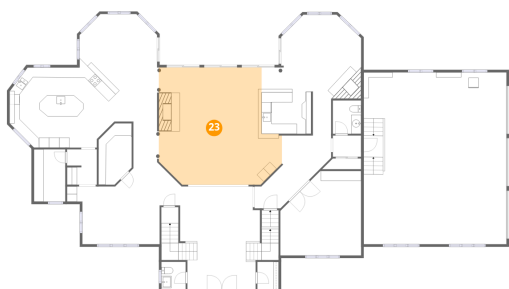
22 Floor 2 - Wet Bar



Dimensions: 9'10" x 13'1"
Area: 117 sq. ft
Counted as living area: Yes

Heated: Yes
Finished: Yes
Enclosed: Yes
Contiguous: Yes
Permitted: Yes
Wet space: No
Addition: No
Conversion: No

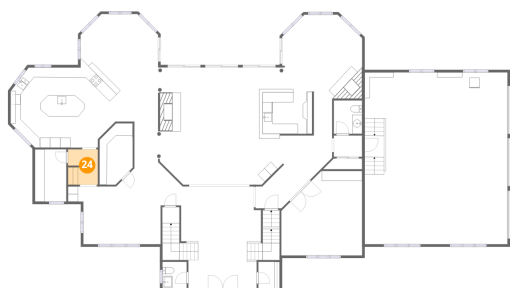
23 Floor 2 - Living Room



Dimensions: 24'6" x 23'3"
Area: 497 sq. ft
Counted as living area: Yes

Heated: Yes
Finished: Yes
Enclosed: Yes
Contiguous: Yes
Permitted: Yes
Wet space: No
Addition: No
Conversion: No

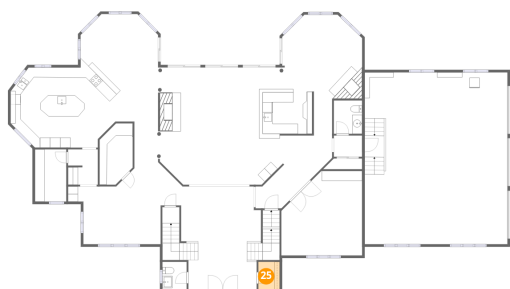
24 Floor 2 - Hall



Dimensions: 5'11" x 7'0"
Area: 41 sq. ft
Counted as living area: Yes

Heated: Yes
Finished: Yes
Enclosed: Yes
Contiguous: Yes
Permitted: Yes
Wet space: No
Addition: No
Conversion: No

25 Floor 2 - W.I.C.



Dimensions: 4'3" x 5'7"
Area: 24 sq. ft
Counted as living area: Yes

Heated: Yes
Finished: Yes
Enclosed: Yes
Contiguous: Yes
Permitted: Yes
Wet space: No
Addition: No
Conversion: No

26 Floor 3 - Bedroom



Dimensions: 11'8" x 13'10"
Area: 160 sq. ft
Counted as living area: Yes

Heated: Yes
Finished: Yes
Enclosed: Yes
Contiguous: Yes
Permitted: Yes
Wet space: No
Addition: No
Conversion: No

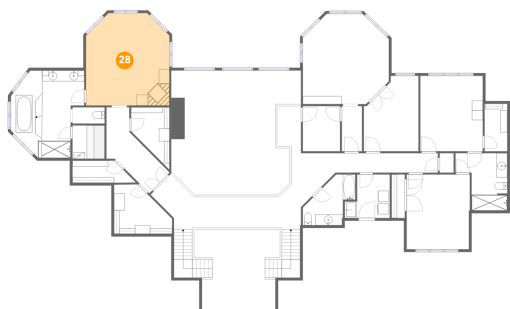
27 Floor 3 - Bedroom



Dimensions: 10'1" x 13'11"
Area: 123 sq. ft
Counted as living area: Yes

Heated: Yes
Finished: Yes
Enclosed: Yes
Contiguous: Yes
Permitted: Yes
Wet space: No
Addition: No
Conversion: No

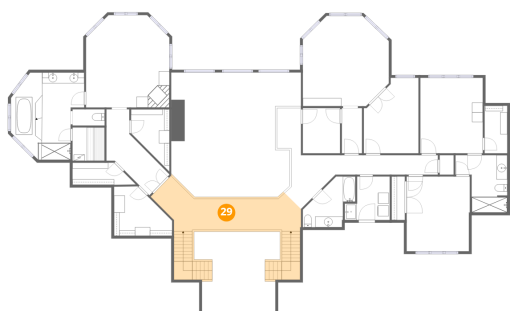
28 Floor 3 - Primary Bedroom



Dimensions: 15'5" x 17'1"
Area: 246 sq. ft
Counted as living area: Yes

Heated: Yes
Finished: Yes
Enclosed: Yes
Contiguous: Yes
Permitted: Yes
Wet space: No
Addition: No
Conversion: No

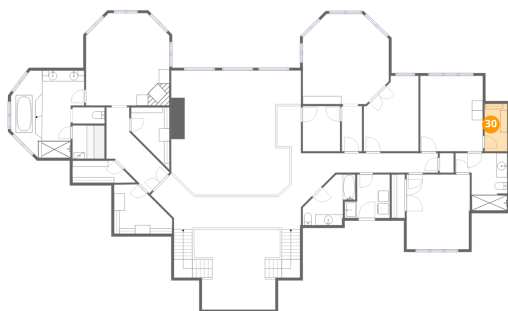
29 Floor 3 - Hall



Dimensions: 23'5" x 8'8"
Area: 265 sq. ft
Counted as living area: Yes

Heated: Yes
Finished: Yes
Enclosed: Yes
Contiguous: Yes
Permitted: Yes
Wet space: No
Addition: No
Conversion: No

30 Floor 3 - W.I.C.



Dimensions: 4'2" x 8'9"
Area: 37 sq. ft
Counted as living area: Yes

Heated: Yes
Finished: Yes
Enclosed: Yes
Contiguous: Yes
Permitted: Yes
Wet space: No
Addition: No
Conversion: No

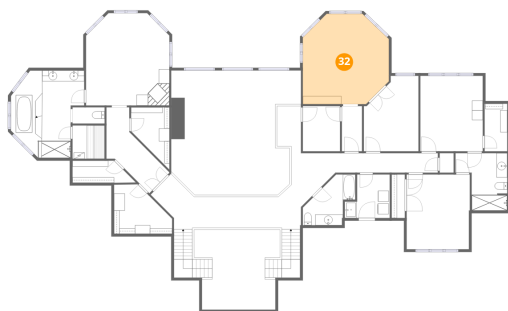
31 Floor 3 - Bath



Dimensions: 8'2" x 9'5"
Area: 61 sq. ft
Counted as living area: Yes

Heated: Yes
Finished: Yes
Enclosed: Yes
Contiguous: Yes
Permitted: Yes
Wet space: Yes
Addition: No
Conversion: No

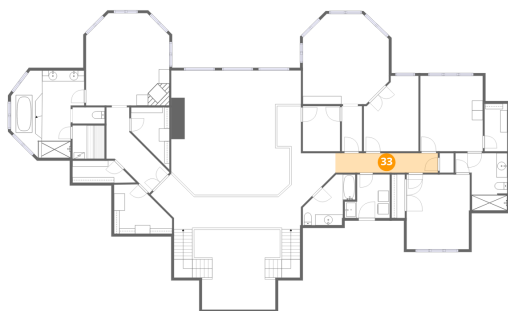
32 Floor 3 - Office



Dimensions: 15'11" x 16'8"
Area: 235 sq. ft
Counted as living area: Yes

Heated: Yes
Finished: Yes
Enclosed: Yes
Contiguous: Yes
Permitted: Yes
Wet space: No
Addition: No
Conversion: No

33 Floor 3 - Hall



Dimensions: 18'11" x 3'7"
Area: 68 sq. ft
Counted as living area: Yes

Heated: Yes
Finished: Yes
Enclosed: Yes
Contiguous: Yes
Permitted: Yes
Wet space: No
Addition: No
Conversion: No

34 Floor 3 - W.I.C.



Dimensions: 11'7" x 4'1"
Area: 40 sq. ft
Counted as living area: Yes

Heated: Yes
Finished: Yes
Enclosed: Yes
Contiguous: Yes
Permitted: Yes
Wet space: No
Addition: No
Conversion: No

35 Floor 3 - Hall



Dimensions: 3'9" x 8'4"
Area: 31 sq. ft
Counted as living area: Yes

Heated: Yes
Finished: Yes
Enclosed: Yes
Contiguous: Yes
Permitted: Yes
Wet space: No
Addition: No
Conversion: No

36 Floor 3 - Sauna



Dimensions: 5'11" x 6'2"
Area: 37 sq. ft
Counted as living area: Yes

Heated: Yes
Finished: Yes
Enclosed: Yes
Contiguous: Yes
Permitted: Yes
Wet space: No
Addition: No
Conversion: No

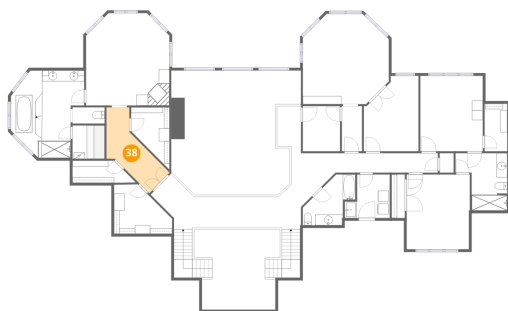
37 Floor 3 - W.I.C.



Dimensions: 10'9" x 9'1"
Area: 78 sq. ft
Counted as living area: Yes

Heated: Yes
Finished: Yes
Enclosed: Yes
Contiguous: Yes
Permitted: Yes
Wet space: No
Addition: No
Conversion: No

38 Floor 3 - Hall



Dimensions: 6'7" x 15'5"
Area: 86 sq. ft
Counted as living area: Yes

Heated: Yes
Finished: Yes
Enclosed: Yes
Contiguous: Yes
Permitted: Yes
Wet space: No
Addition: No
Conversion: No

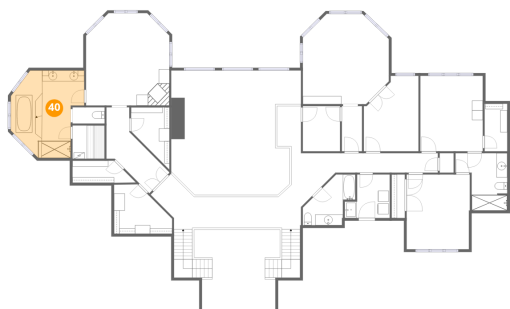
39 Floor 3 - W.I.C.



Dimensions: 5'9" x 7'11"
Area: 56 sq. ft
Counted as living area: Yes

Heated: Yes
Finished: Yes
Enclosed: Yes
Contiguous: Yes
Permitted: Yes
Wet space: No
Addition: No
Conversion: No

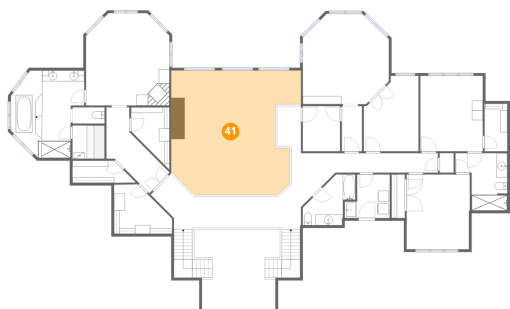
40 Floor 3 - Primary Bath



Dimensions: 13'7" x 16'2"
Area: 174 sq. ft
Counted as living area: Yes

Heated: Yes
Finished: Yes
Enclosed: Yes
Contiguous: Yes
Permitted: Yes
Wet space: Yes
Addition: No
Conversion: No

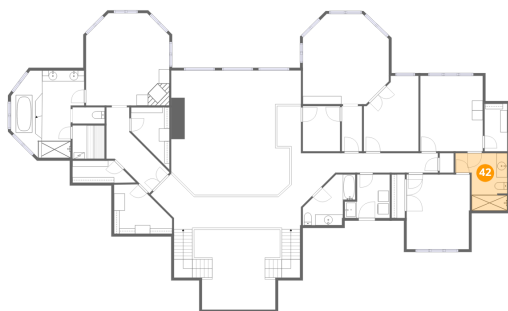
41 Floor 3 - Open To Below



Dimensions: 24'0" x 23'0"
Area: 483 sq. ft
Counted as living area: No

Heated: No
Finished: No
Enclosed: No
Contiguous: Yes
Permitted: No
Wet space: No
Addition: No
Conversion: No

42 Floor 3 - Bath



Dimensions: 9'7" x 10'7"
Area: 80 sq. ft
Counted as living area: Yes

Heated: Yes
Finished: Yes
Enclosed: Yes
Contiguous: Yes
Permitted: Yes
Wet space: Yes
Addition: No
Conversion: No

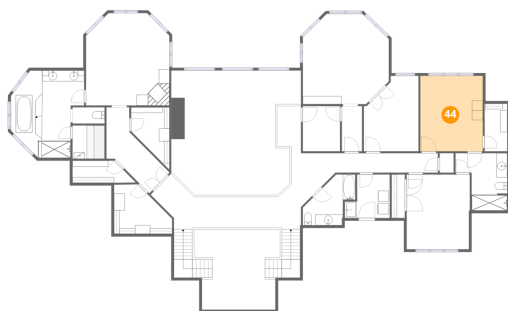
43 Floor 3 - Bath



Dimensions: 5'11" x 3'0"
Area: 18 sq. ft
Counted as living area: Yes

Heated: Yes
Finished: Yes
Enclosed: Yes
Contiguous: Yes
Permitted: Yes
Wet space: No
Addition: No
Conversion: No

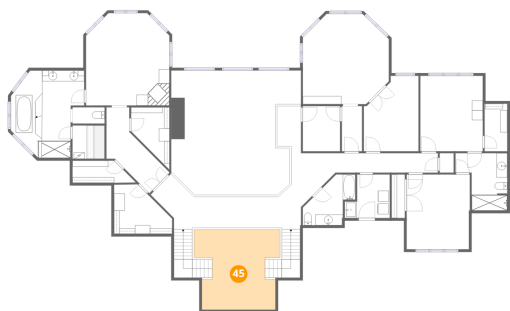
44 Floor 3 - Bedroom



Dimensions: 11'7" x 13'11"
Area: 161 sq. ft
Counted as living area: Yes

Heated: Yes
Finished: Yes
Enclosed: Yes
Contiguous: Yes
Permitted: Yes
Wet space: No
Addition: No
Conversion: No

45 Floor 3 - Open To Below



Dimensions: 15'10" x 14'9"
Area: 197 sq. ft
Counted as living area: No

Heated: No
Finished: No
Enclosed: No
Contiguous: Yes
Permitted: No
Wet space: No
Addition: No
Conversion: No

46 Floor 3 - Laundry



Dimensions: 8'4" x 8'0"
Area: 55 sq. ft
Counted as living area: Yes

Heated: Yes
Finished: Yes
Enclosed: Yes
Contiguous: Yes
Permitted: Yes
Wet space: No
Addition: No
Conversion: No

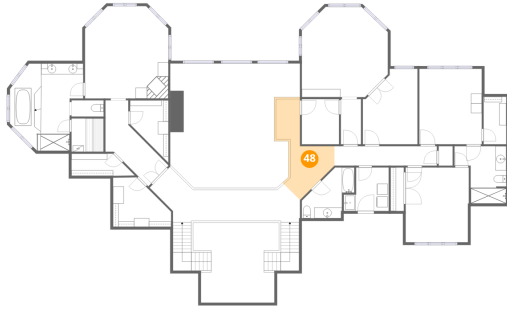
47 Floor 3 - Laundry



Dimensions: 6'11" x 8'4"
Area: 58 sq. ft
Counted as living area: Yes

Heated: Yes
Finished: Yes
Enclosed: Yes
Contiguous: Yes
Permitted: Yes
Wet space: No
Addition: No
Conversion: No

48 Floor 3 - Hall



Dimensions: 8'3" x 18'7"
Area: 104 sq. ft
Counted as living area: Yes

Heated: Yes
Finished: Yes
Enclosed: Yes
Contiguous: Yes
Permitted: Yes
Wet space: No
Addition: No
Conversion: No