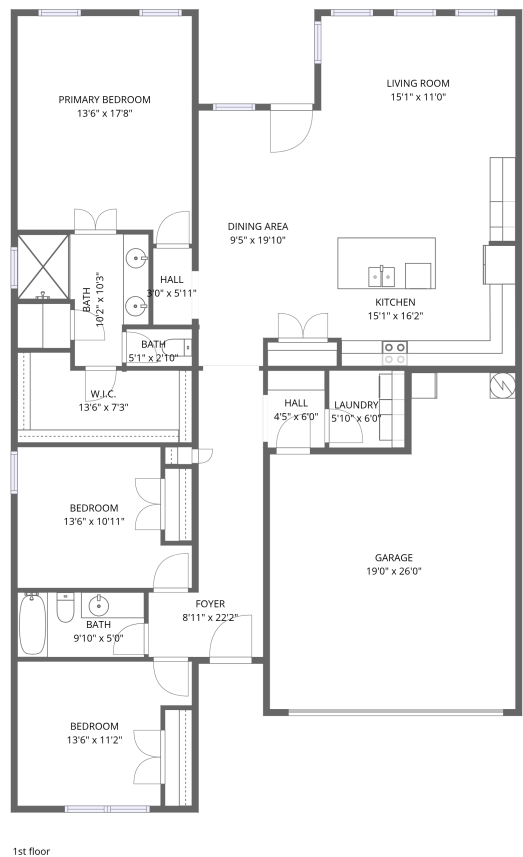


Home data report

312 Paloma Street, Weatherford, Parker County, Texas, United States, 76087



Total Area: 1625 sq. ft


1st Floor: 1625 sq. ft

Excluded: Garage 426 sq. ft, Walls: 133 sq. ft

Property summary

 **1** Floors

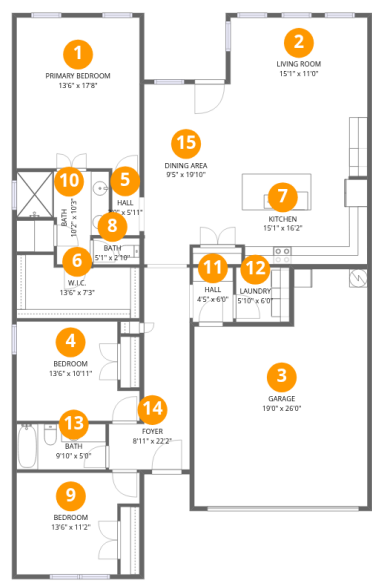
 **3** Bedrooms

 **2** Bathrooms

 **1** Garages

Home data report

312 Paloma Street, Weatherford, Parker County, Texas, United States, 76087



Room dimensions

Floor 1

Total:1625sqft Excluded: 426sqft

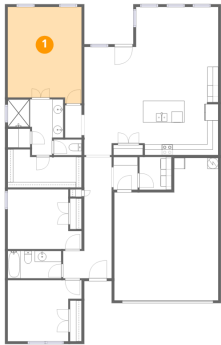
#		Dimensions	sqft	Counted as living area
1	Primary Bedroom	13'6" x 17'8"	238 sq. ft	Yes
2	Living Room	15'1" x 11'0"	165 sq. ft	Yes
3	Garage	19'0" x 26'0"	495 sq. ft	No
4	Bedroom	13'6" x 10'11"	148 sq. ft	Yes
5	Hall	3'0" x 5'11"	18 sq. ft	Yes
6	W.I.C.	13'6" x 7'3"	98 sq. ft	Yes
7	Kitchen	15'1" x 16'2"	243 sq. ft	Yes
8	Bath	5'1" x 2'10"	15 sq. ft	Yes
9	Bedroom	13'6" x 11'2"	151 sq. ft	Yes
10	Bath	10'2" x 10'3"	104 sq. ft	Yes
11	Hall	4'5" x 6'0"	26 sq. ft	Yes

Home data report

312 Paloma Street, Weatherford, Parker County, Texas, United States, 76087

#		Dimensions	sqft	Counted as living area
12	Laundry	5'10" x 6'0"	35 sq. ft	Yes
13	Bath	9'10" x 5'0"	49 sq. ft	Yes
14	Foyer	8'11" x 22'2"	197 sq. ft	Yes
15	Dining Area	9'5" x 19'10"	187 sq. ft	Yes

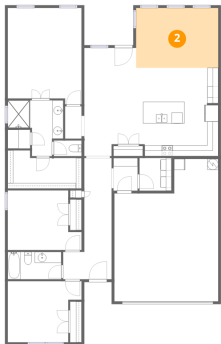
1 Floor 1 - Primary Bedroom



Dimensions: 13'6" x 17'8"
Area: 238 sq. ft
Counted as living area: Yes

Heated: Yes
Finished: Yes
Enclosed: Yes
Contiguous: Yes
Permitted: Yes
Wet space: No
Addition: No
Conversion: No

2 Floor 1 - Living Room

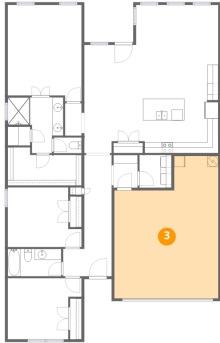


Dimensions: 15'1" x 11'0"
Area: 165 sq. ft
Counted as living area: Yes

Heated: Yes
Finished: Yes
Enclosed: Yes
Contiguous: Yes
Permitted: Yes
Wet space: No
Addition: No
Conversion: No

312 Paloma Street, Weatherford, Parker County, Texas, United States, 76087

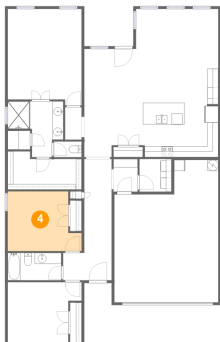
3 Floor 1 - Garage



Dimensions: 19'0" x 26'0"
Area: 495 sq. ft
Counted as living area: No

Heated: No
Finished: No
Enclosed: Yes
Contiguous: Yes
Permitted: Yes
Wet space: No
Addition: No
Conversion: No

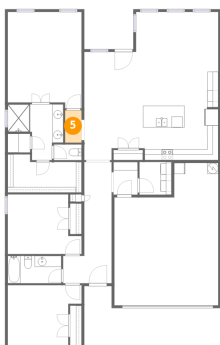
4 Floor 1 - Bedroom



Dimensions: 13'6" x 10'11"
Area: 148 sq. ft
Counted as living area: Yes

Heated: Yes
Finished: Yes
Enclosed: Yes
Contiguous: Yes
Permitted: Yes
Wet space: No
Addition: No
Conversion: No

5 Floor 1 - Hall

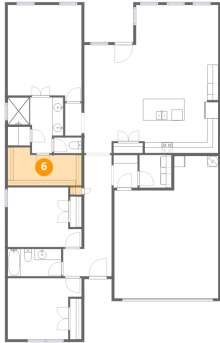


Dimensions: 3'0" x 5'11"
Area: 18 sq. ft
Counted as living area: Yes

Heated: Yes
Finished: Yes
Enclosed: Yes
Contiguous: Yes
Permitted: Yes
Wet space: No
Addition: No
Conversion: No

312 Paloma Street, Weatherford, Parker County, Texas, United States, 76087

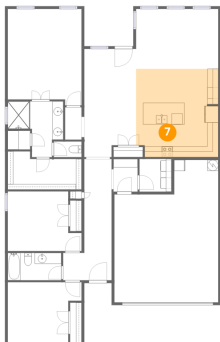
6 Floor 1 - W.I.C.



Dimensions: 13'6" x 7'3"
Area: 98 sq. ft
Counted as living area: Yes

Heated: Yes
Finished: Yes
Enclosed: Yes
Contiguous: Yes
Permitted: Yes
Wet space: No
Addition: No
Conversion: No

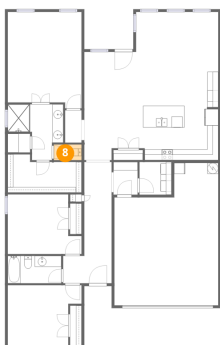
7 Floor 1 - Kitchen



Dimensions: 15'1" x 16'2"
Area: 243 sq. ft
Counted as living area: Yes

Heated: Yes
Finished: Yes
Enclosed: Yes
Contiguous: Yes
Permitted: Yes
Wet space: No
Addition: No
Conversion: No

8 Floor 1 - Bath



Dimensions: 5'1" x 2'10"
Area: 15 sq. ft
Counted as living area: Yes

Heated: Yes
Finished: Yes
Enclosed: Yes
Contiguous: Yes
Permitted: Yes
Wet space: Yes
Addition: No
Conversion: No

312 Paloma Street, Weatherford, Parker County, Texas, United States, 76087

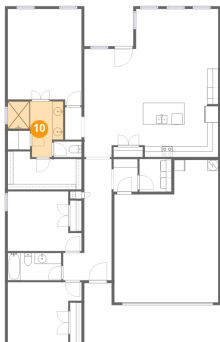
9 Floor 1 - Bedroom



Dimensions: 13'6" x 11'2"
Area: 151 sq. ft
Counted as living area: Yes

Heated: Yes
Finished: Yes
Enclosed: Yes
Contiguous: Yes
Permitted: Yes
Wet space: No
Addition: No
Conversion: No

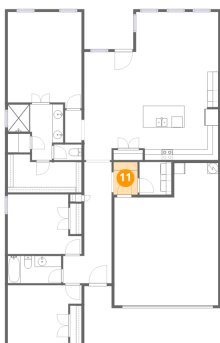
10 Floor 1 - Bath



Dimensions: 10'2" x 10'3"
Area: 104 sq. ft
Counted as living area: Yes

Heated: Yes
Finished: Yes
Enclosed: Yes
Contiguous: Yes
Permitted: Yes
Wet space: Yes
Addition: No
Conversion: No

11 Floor 1 - Hall

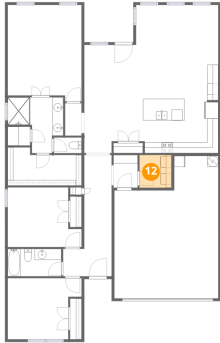


Dimensions: 4'5" x 6'0"
Area: 26 sq. ft
Counted as living area: Yes

Heated: Yes
Finished: Yes
Enclosed: Yes
Contiguous: Yes
Permitted: Yes
Wet space: No
Addition: No
Conversion: No

312 Paloma Street, Weatherford, Parker County, Texas, United States, 76087

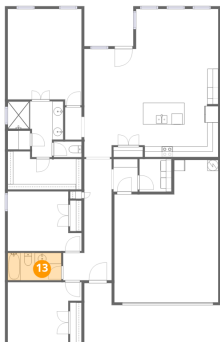
12 Floor 1 - Laundry



Dimensions: 5'10" x 6'0"
Area: 35 sq. ft
Counted as living area: Yes

Heated: Yes
Finished: Yes
Enclosed: Yes
Contiguous: Yes
Permitted: Yes
Wet space: No
Addition: No
Conversion: No

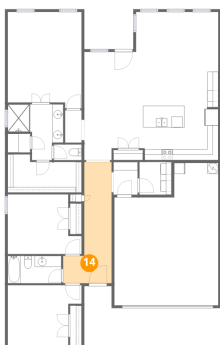
13 Floor 1 - Bath



Dimensions: 9'10" x 5'0"
Area: 49 sq. ft
Counted as living area: Yes

Heated: Yes
Finished: Yes
Enclosed: Yes
Contiguous: Yes
Permitted: Yes
Wet space: Yes
Addition: No
Conversion: No

14 Floor 1 - Foyer

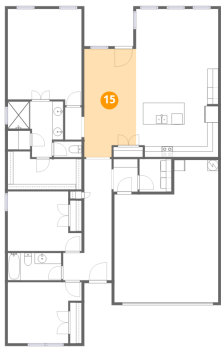


Dimensions: 8'11" x 22'2"
Area: 197 sq. ft
Counted as living area: Yes

Heated: Yes
Finished: Yes
Enclosed: Yes
Contiguous: Yes
Permitted: Yes
Wet space: No
Addition: No
Conversion: No

312 Paloma Street, Weatherford, Parker County, Texas, United States, 76087

15 Floor 1 - Dining Area



Dimensions: 9'5" x 19'10"
Area: 187 sq. ft
Counted as living area: Yes

Heated: Yes
Finished: Yes
Enclosed: Yes
Contiguous: Yes
Permitted: Yes
Wet space: No
Addition: No
Conversion: No