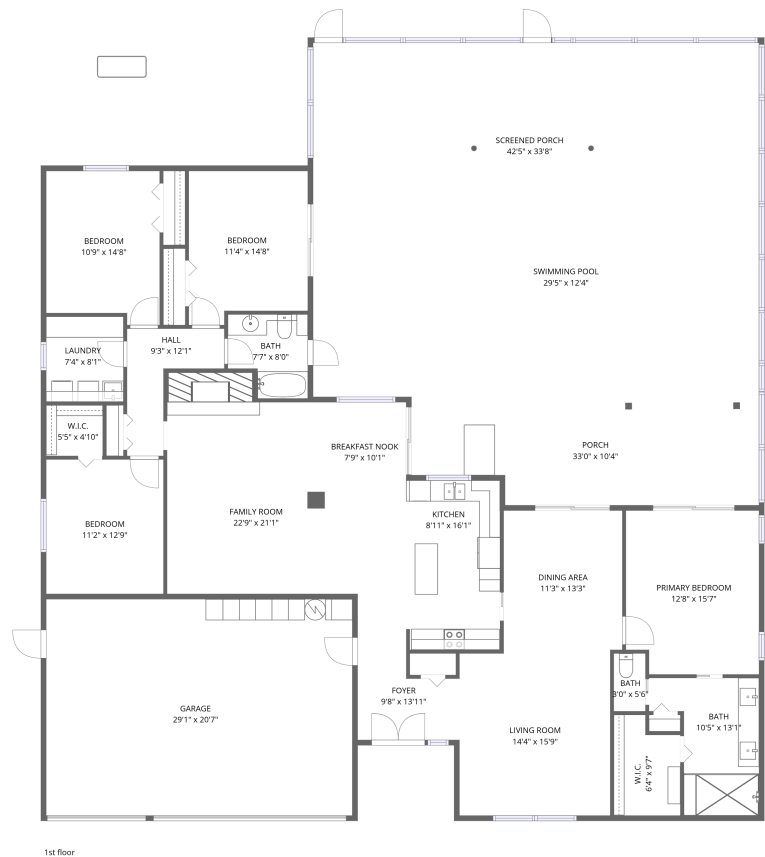


Home data report

3408 Fairfield Trail, Trails of Countryside, Clearwater, Pinellas County, Florida, United States, 33761




Total Area: 2195 sq. ft


1st Floor: 2195 sq. ft

Excluded: Garage 598 sq. ft, Screened porch 1064 sq. ft, Porch 315 sq. ft, Walls: 208 sq. ft

Property summary

 1 Floors

 4 Bedrooms

 2 Bathrooms

 1 Garages

3408 Fairfield Trail, Trails of Countryside, Clearwater, Pinellas County, Florida, United States, 33761



Room dimensions

Floor 1 Total:2195sqft Excluded: 1977sqft

#		Dimensions	sqft	Counted as living area
1	Dining Area	11'3" x 13'3"	149 sq. ft	Yes
2	Primary Bedroom	12'8" x 15'7"	192 sq. ft	Yes
3	Bedroom	10'9" x 14'8"	149 sq. ft	Yes
4	Bath	10'5" x 13'1"	104 sq. ft	Yes
5	Garage	29'1" x 20'7"	598 sq. ft	No
6	Family Room	22'9" x 21'1"	360 sq. ft	Yes
7	Bath	7'7" x 8'0"	53 sq. ft	Yes
8	Breakfast Nook	7'9" x 10'1"	78 sq. ft	Yes
9	Foyer	9'8" x 13'11"	94 sq. ft	Yes
10	Bedroom	11'4" x 14'8"	155 sq. ft	Yes
11	Bath	3'0" x 5'6"	17 sq. ft	Yes

Home data report

3408 Fairfield Trail, Trails of Countryside, Clearwater, Pinellas County, Florida, United States, 33761

#		Dimensions	sqft	Counted as living area
12	Kitchen	8'11" x 16'1"	143 sq. ft	Yes
13	Screened Porch	42'5" x 33'8"	1426 sq. ft	No
14	Swimming Pool	29'5" x 12'4"	363 sq. ft	No
15	Living Room	14'4" x 15'9"	224 sq. ft	Yes
16	Bedroom	11'2" x 12'9"	143 sq. ft	Yes
17	Hall	9'3" x 12'1"	64 sq. ft	Yes
18	Porch	33'0" x 10'4"	315 sq. ft	No
19	Laundry	7'4" x 8'1"	59 sq. ft	Yes
20	W.I.C.	6'4" x 9'7"	54 sq. ft	Yes
21	W.I.C.	5'5" x 4'10"	26 sq. ft	Yes

3408 Fairfield Trail, Trails of Countryside, Clearwater, Pinellas
County, Florida, United States, 33761

1 Floor 1 - Dining Area



Dimensions: 11'3" x 13'3"
Area: 149 sq. ft
Counted as living area: Yes

Heated: Yes
Finished: Yes
Enclosed: Yes
Contiguous: Yes
Permitted: Yes
Wet space: No
Addition: No
Conversion: No

2 Floor 1 - Primary Bedroom



Dimensions: 12'8" x 15'7"
Area: 192 sq. ft
Counted as living area: Yes

Heated: Yes
Finished: Yes
Enclosed: Yes
Contiguous: Yes
Permitted: Yes
Wet space: No
Addition: No
Conversion: No

**3408 Fairfield Trail, Trails of Countryside, Clearwater, Pinellas
County, Florida, United States, 33761**

3 Floor 1 - Bedroom



Dimensions: 10'9" x 14'8"
Area: 149 sq. ft
Counted as living area: Yes

Heated: Yes
Finished: Yes
Enclosed: Yes
Contiguous: Yes
Permitted: Yes
Wet space: No
Addition: No
Conversion: No

4 Floor 1 - Bath



Dimensions: 10'5" x 13'1"
Area: 104 sq. ft
Counted as living area: Yes

Heated: Yes
Finished: Yes
Enclosed: Yes
Contiguous: Yes
Permitted: Yes
Wet space: Yes
Addition: No
Conversion: No

5 Floor 1 - Garage

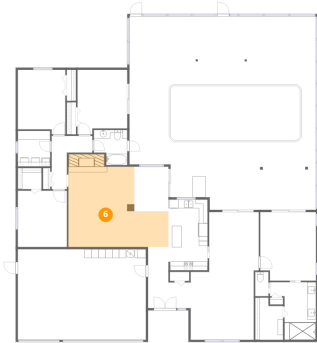


Dimensions: 29'1" x 20'7"
Area: 598 sq. ft
Counted as living area: No

Heated: No
Finished: No
Enclosed: Yes
Contiguous: Yes
Permitted: Yes
Wet space: No
Addition: No
Conversion: No

3408 Fairfield Trail, Trails of Countryside, Clearwater, Pinellas County, Florida, United States, 33761

6 Floor 1 - Family Room



Dimensions: 22'9" x 21'1"
Area: 360 sq. ft
Counted as living area: Yes

Heated: Yes
Finished: Yes
Enclosed: Yes
Contiguous: Yes
Permitted: Yes
Wet space: No
Addition: No
Conversion: No

7 Floor 1 - Bath



Dimensions: 7'7" x 8'0"
Area: 53 sq. ft
Counted as living area: Yes

Heated: Yes
Finished: Yes
Enclosed: Yes
Contiguous: Yes
Permitted: Yes
Wet space: Yes
Addition: No
Conversion: No

8 Floor 1 - Breakfast Nook



Dimensions: 7'9" x 10'1"
Area: 78 sq. ft
Counted as living area: Yes

Heated: Yes
Finished: Yes
Enclosed: Yes
Contiguous: Yes
Permitted: Yes
Wet space: No
Addition: No
Conversion: No

3408 Fairfield Trail, Trails of Countryside, Clearwater, Pinellas County, Florida, United States, 33761

9 Floor 1 - Foyer



Dimensions: 9'8" x 13'11"
Area: 94 sq. ft
Counted as living area: Yes

Heated: Yes
Finished: Yes
Enclosed: Yes
Contiguous: Yes
Permitted: Yes
Wet space: No
Addition: No
Conversion: No

10 Floor 1 - Bedroom



Dimensions: 11'4" x 14'8"
Area: 155 sq. ft
Counted as living area: Yes

Heated: Yes
Finished: Yes
Enclosed: Yes
Contiguous: Yes
Permitted: Yes
Wet space: No
Addition: No
Conversion: No

11 Floor 1 - Bath

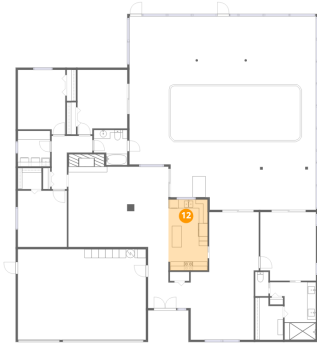


Dimensions: 3'0" x 5'6"
Area: 17 sq. ft
Counted as living area: Yes

Heated: Yes
Finished: Yes
Enclosed: Yes
Contiguous: Yes
Permitted: Yes
Wet space: Yes
Addition: No
Conversion: No

3408 Fairfield Trail, Trails of Countryside, Clearwater, Pinellas County, Florida, United States, 33761

12 Floor 1 - Kitchen



Dimensions: 8'11" x 16'1"
Area: 143 sq. ft
Counted as living area: Yes

Heated: Yes
Finished: Yes
Enclosed: Yes
Contiguous: Yes
Permitted: Yes
Wet space: No
Addition: No
Conversion: No

13 Floor 1 - Screened Porch



Dimensions: 42'5" x 33'8"
Area: 1426 sq. ft
Counted as living area: No

Heated: No
Finished: No
Enclosed: No
Contiguous: Yes
Permitted: Yes
Wet space: No
Addition: No
Conversion: No

14 Floor 1 - Swimming Pool



Dimensions: 29'5" x 12'4"
Area: 363 sq. ft
Counted as living area: No

Heated: No
Finished: No
Enclosed: No
Contiguous: Yes
Permitted: No
Wet space: No
Addition: No
Conversion: No

3408 Fairfield Trail, Trails of Countryside, Clearwater, Pinellas County, Florida, United States, 33761

15 Floor 1 - Living Room



Dimensions: 14'4" x 15'9"
Area: 224 sq. ft
Counted as living area: Yes

Heated: Yes
Finished: Yes
Enclosed: Yes
Contiguous: Yes
Permitted: Yes
Wet space: No
Addition: No
Conversion: No

16 Floor 1 - Bedroom



Dimensions: 11'2" x 12'9"
Area: 143 sq. ft
Counted as living area: Yes

Heated: Yes
Finished: Yes
Enclosed: Yes
Contiguous: Yes
Permitted: Yes
Wet space: No
Addition: No
Conversion: No

17 Floor 1 - Hall



Dimensions: 9'3" x 12'1"
Area: 64 sq. ft
Counted as living area: Yes

Heated: Yes
Finished: Yes
Enclosed: Yes
Contiguous: Yes
Permitted: Yes
Wet space: No
Addition: No
Conversion: No

3408 Fairfield Trail, Trails of Countryside, Clearwater, Pinellas County, Florida, United States, 33761

18 Floor 1 - Porch



Dimensions: 33'0" x 10'4"
Area: 315 sq. ft
Counted as living area: No

Heated: No
Finished: No
Enclosed: No
Contiguous: Yes
Permitted: Yes
Wet space: No
Addition: No
Conversion: No

19 Floor 1 - Laundry



Dimensions: 7'4" x 8'1"
Area: 59 sq. ft
Counted as living area: Yes

Heated: Yes
Finished: Yes
Enclosed: Yes
Contiguous: Yes
Permitted: Yes
Wet space: No
Addition: No
Conversion: No

20 Floor 1 - W.I.C.



Dimensions: 6'4" x 9'7"
Area: 54 sq. ft
Counted as living area: Yes

Heated: Yes
Finished: Yes
Enclosed: Yes
Contiguous: Yes
Permitted: Yes
Wet space: No
Addition: No
Conversion: No

3408 Fairfield Trail, Trails of Countryside, Clearwater, Pinellas
County, Florida, United States, 33761

21 Floor 1 - W.I.C.



Dimensions: 5'5" x 4'10"
Area: 26 sq. ft
Counted as living area: Yes

Heated: Yes
Finished: Yes
Enclosed: Yes
Contiguous: Yes
Permitted: Yes
Wet space: No
Addition: No
Conversion: No