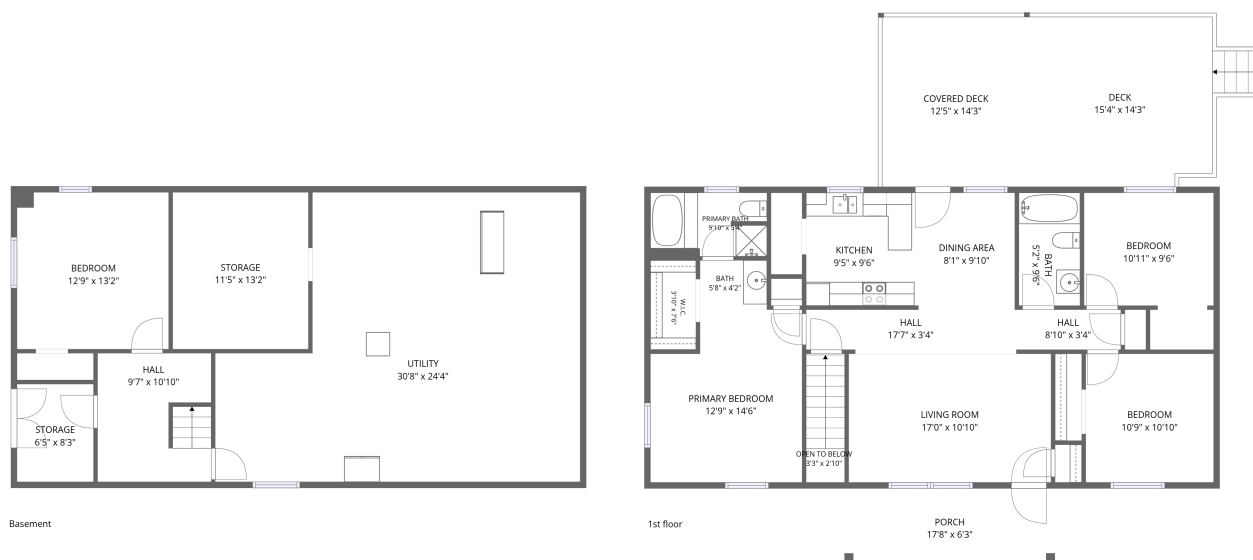


Home data report

1145 Farmington Drive, Hardy, Franklin County, Virginia, United States, 24101



Total Area: 1424 sq. ft

Basement: 306 sq. ft, 1st Floor: 1118 sq. ft

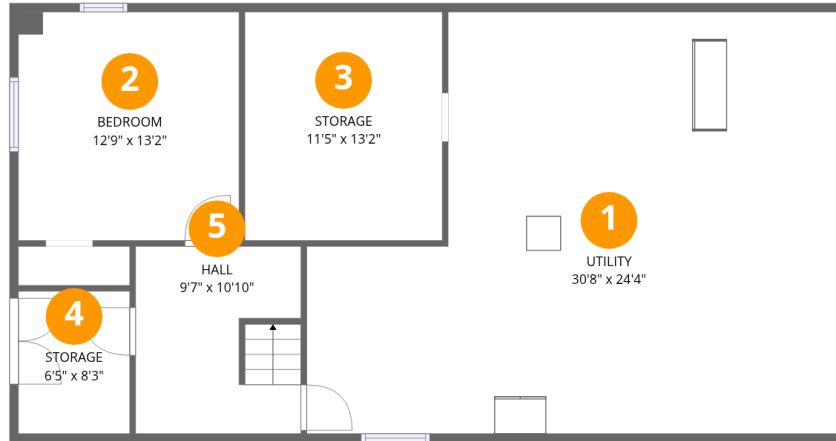
Excluded: Utility 644 sq. ft, Storage 204 sq. ft, Open to below 35 sq. ft, Porch 110 sq. ft, Deck 230 sq. ft, Covered deck 177 sq. ft, Walls: 145 sq. ft

Property summary



Home data report

1145 Farmington Drive, Hardy, Franklin County, Virginia, United States, 24101



Room dimensions

Floor 1 Below grade

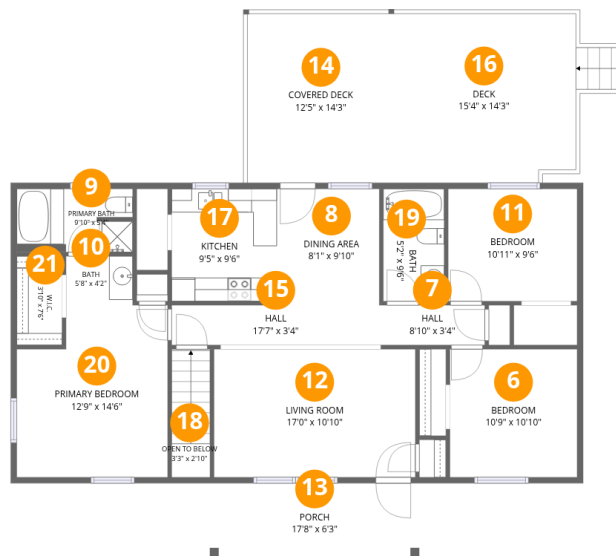
Total:306sqft

Excluded: 848sqft

#		Dimensions	sqft	Counted as living area
1	Utility	30'8" x 24'4"	637 sq. ft	No
2	Bedroom	12'9" x 13'2"	168 sq. ft	Yes
3	Storage	11'5" x 13'2"	151 sq. ft	No
4	Storage	6'5" x 8'3"	53 sq. ft	No
5	Hall	9'7" x 10'10"	101 sq. ft	Yes

Home data report

1145 Farmington Drive, Hardy, Franklin County, Virginia, United States, 24101



Room dimensions

Floor 2

Total: 1118sqft Excluded: 552sqft

#		Dimensions	sqft	Counted as living area
6	Bedroom	10'9" x 10'10"	116 sq. ft	Yes
7	Hall	8'10" x 3'4"	30 sq. ft	Yes
8	Dining Area	8'1" x 9'10"	80 sq. ft	Yes
9	Primary Bath	9'10" x 5'4"	51 sq. ft	Yes
10	Bath	5'8" x 4'2"	23 sq. ft	Yes
11	Bedroom	10'11" x 9'6"	103 sq. ft	Yes
12	Living Room	17'0" x 10'10"	184 sq. ft	Yes
13	Porch	17'8" x 6'3"	110 sq. ft	No
14	Covered Deck	12'5" x 14'3"	177 sq. ft	No
15	Hall	17'7" x 3'4"	59 sq. ft	Yes
16	Deck	15'4" x 14'3"	230 sq. ft	No

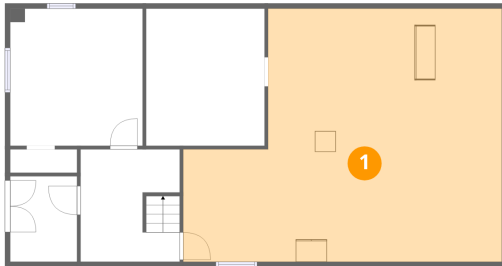
Scan captured on Tue, 16 Jun 2026 16:56:14 GMT
 SIZES AND DIMENSIONS ARE APPROXIMATE, ACTUAL MAY VARY.

Home data report

1145 Farmington Drive, Hardy, Franklin County, Virginia, United States, 24101

#		Dimensions	sqft	Counted as living area
17	Kitchen	9'5" x 9'6"	90 sq. ft	Yes
18	Open To Below	3'3" x 2'10"	35 sq. ft	No
19	Bath	5'2" x 9'6"	49 sq. ft	Yes
20	Primary Bedroom	12'9" x 14'6"	170 sq. ft	Yes
21	W.I.C.	3'10" x 7'6"	29 sq. ft	Yes

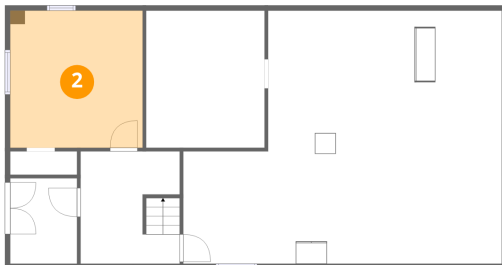
1 Floor 1 - Utility



Dimensions: 30'8" x 24'4"
Area: 637 sq. ft
Counted as living area: No

Heated: Yes
Finished: No
Enclosed: Yes
Contiguous: Yes
Permitted: Yes
Wet space: No
Addition: No
Conversion: No

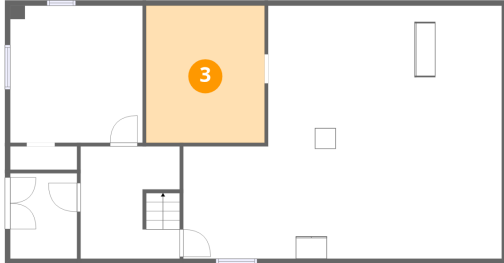
2 Floor 1 - Bedroom



Dimensions: 12'9" x 13'2"
Area: 168 sq. ft
Counted as living area: Yes

Heated: Yes
Finished: Yes
Enclosed: Yes
Contiguous: Yes
Permitted: Yes
Wet space: No
Addition: No
Conversion: No

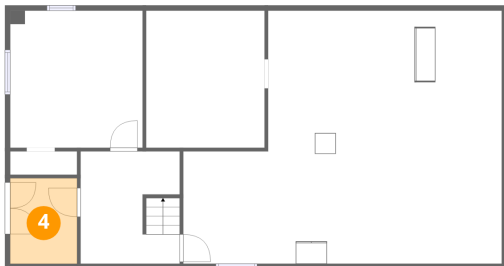
3 Floor 1 - Storage



Dimensions: 11'5" x 13'2"
Area: 151 sq. ft
Counted as living area: No

Heated: No
Finished: No
Enclosed: No
Contiguous: Yes
Permitted: Yes
Wet space: No
Addition: No
Conversion: No

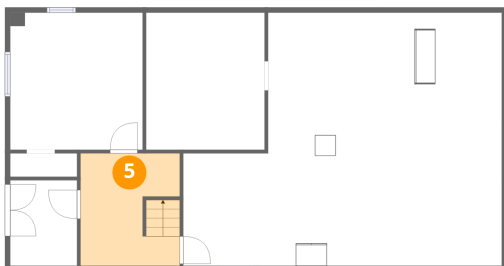
4 Floor 1 - Storage



Dimensions: 6'5" x 8'3"
Area: 53 sq. ft
Counted as living area: No

Heated: No
Finished: No
Enclosed: No
Contiguous: Yes
Permitted: Yes
Wet space: No
Addition: No
Conversion: No

5 Floor 1 - Hall



Dimensions: 9'7" x 10'10"
Area: 101 sq. ft
Counted as living area: Yes

Heated: Yes
Finished: Yes
Enclosed: Yes
Contiguous: Yes
Permitted: Yes
Wet space: No
Addition: No
Conversion: No

6 Floor 2 - Bedroom



Dimensions: 10'9" x 10'10"
Area: 116 sq. ft
Counted as living area: Yes

Heated: Yes
Finished: Yes
Enclosed: Yes
Contiguous: Yes
Permitted: Yes
Wet space: No
Addition: No
Conversion: No

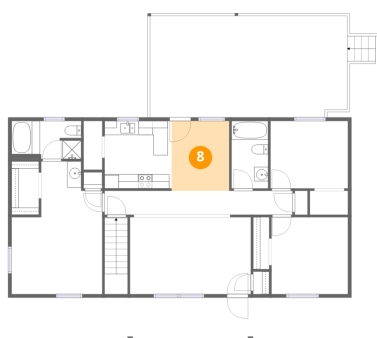
7 Floor 2 - Hall



Dimensions: 8'10" x 3'4"
Area: 30 sq. ft
Counted as living area: Yes

Heated: Yes
Finished: Yes
Enclosed: Yes
Contiguous: Yes
Permitted: Yes
Wet space: No
Addition: No
Conversion: No

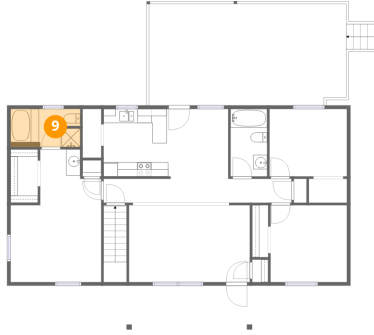
8 Floor 2 - Dining Area



Dimensions: 8'1" x 9'10"
Area: 80 sq. ft
Counted as living area: Yes

Heated: Yes
Finished: Yes
Enclosed: Yes
Contiguous: Yes
Permitted: Yes
Wet space: No
Addition: No
Conversion: No

9 Floor 2 - Primary Bath



Dimensions: 9'10" x 5'4"
Area: 51 sq. ft
Counted as living area: Yes

Heated: Yes
Finished: Yes
Enclosed: Yes
Contiguous: Yes
Permitted: Yes
Wet space: Yes
Addition: No
Conversion: No

10 Floor 2 - Bath



Dimensions: 5'8" x 4'2"
Area: 23 sq. ft
Counted as living area: Yes

Heated: Yes
Finished: Yes
Enclosed: Yes
Contiguous: Yes
Permitted: Yes
Wet space: Yes
Addition: No
Conversion: No

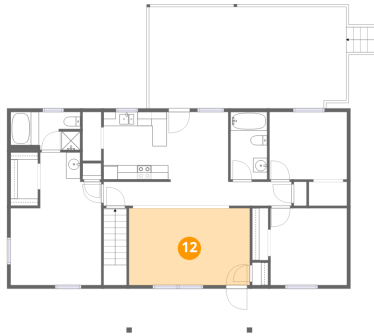
11 Floor 2 - Bedroom



Dimensions: 10'11" x 9'6"
Area: 103 sq. ft
Counted as living area: Yes

Heated: Yes
Finished: Yes
Enclosed: Yes
Contiguous: Yes
Permitted: Yes
Wet space: No
Addition: No
Conversion: No

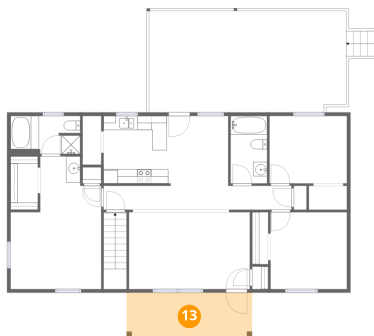
12 Floor 2 - Living Room



Dimensions: 17'0" x 10'10"
Area: 184 sq. ft
Counted as living area: Yes

Heated: Yes
Finished: Yes
Enclosed: Yes
Contiguous: Yes
Permitted: Yes
Wet space: No
Addition: No
Conversion: No

13 Floor 2 - Porch



Dimensions: 17'8" x 6'3"
Area: 110 sq. ft
Counted as living area: No

Heated: No
Finished: No
Enclosed: No
Contiguous: Yes
Permitted: Yes
Wet space: No
Addition: No
Conversion: No

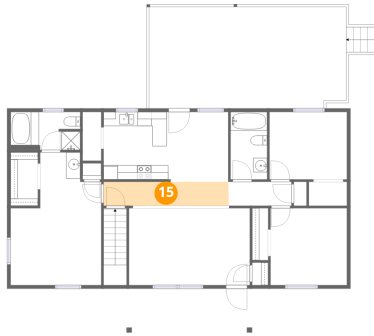
14 Floor 2 - Covered Deck



Dimensions: 12'5" x 14'3"
Area: 177 sq. ft
Counted as living area: No

Heated: No
Finished: No
Enclosed: No
Contiguous: Yes
Permitted: Yes
Wet space: No
Addition: No
Conversion: No

15 Floor 2 - Hall



Dimensions: 17'7" x 3'4"
Area: 59 sq. ft
Counted as living area: Yes

Heated: Yes
Finished: Yes
Enclosed: Yes
Contiguous: Yes
Permitted: Yes
Wet space: No
Addition: No
Conversion: No

16 Floor 2 - Deck



Dimensions: 15'4" x 14'3"
Area: 230 sq. ft
Counted as living area: No

Heated: No
Finished: No
Enclosed: No
Contiguous: Yes
Permitted: Yes
Wet space: No
Addition: No
Conversion: No

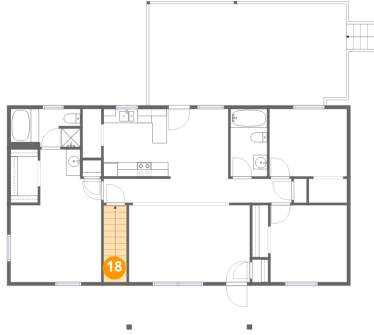
17 Floor 2 - Kitchen



Dimensions: 9'5" x 9'6"
Area: 90 sq. ft
Counted as living area: Yes

Heated: Yes
Finished: Yes
Enclosed: Yes
Contiguous: Yes
Permitted: Yes
Wet space: No
Addition: No
Conversion: No

18 Floor 2 - Open To Below



Dimensions: 3'3" x 2'10"
Area: 35 sq. ft
Counted as living area: No

Heated: No
Finished: No
Enclosed: No
Contiguous: Yes
Permitted: No
Wet space: No
Addition: No
Conversion: No

19 Floor 2 - Bath



Dimensions: 5'2" x 9'6"
Area: 49 sq. ft
Counted as living area: Yes

Heated: Yes
Finished: Yes
Enclosed: Yes
Contiguous: Yes
Permitted: Yes
Wet space: Yes
Addition: No
Conversion: No

20 Floor 2 - Primary Bedroom

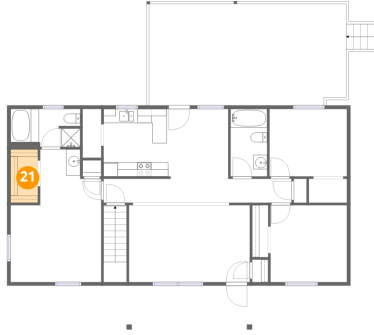


Dimensions: 12'9" x 14'6"
Area: 170 sq. ft
Counted as living area: Yes

Heated: Yes
Finished: Yes
Enclosed: Yes
Contiguous: Yes
Permitted: Yes
Wet space: No
Addition: No
Conversion: No

1145 Farmington Drive, Hardy, Franklin County, Virginia, United States, 24101

21 Floor 2 - W.I.C.



Dimensions: 3'10" x 7'6"
Area: 29 sq. ft
Counted as living area: Yes

Heated: Yes
Finished: Yes
Enclosed: Yes
Contiguous: Yes
Permitted: Yes
Wet space: No
Addition: No
Conversion: No