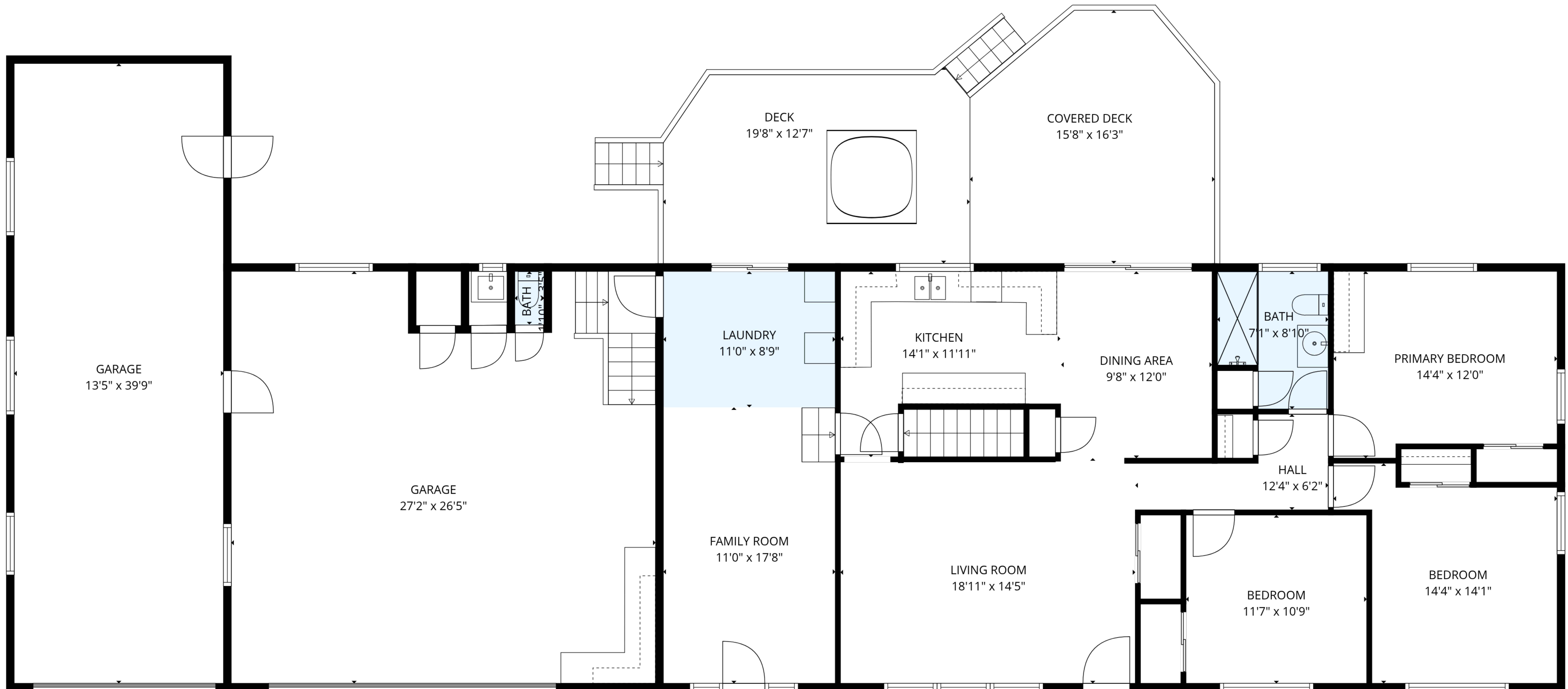


BASEMENT  
49'4" x 26'5"

**TOTAL: 3498 sq. ft**  
1st floor: 1230 sq. ft, 2nd floor: 1537 sq. ft, 3rd floor: 731 sq. ft  
EXCLUDED AREAS: GARAGE: 1214 sq. ft, DECK: 231 sq. ft, COVERED DECK: 226 sq. ft,  
ROOM: 359 sq. ft, LOW CEILING: 174 sq. ft, WALLS: 338 sq. ft

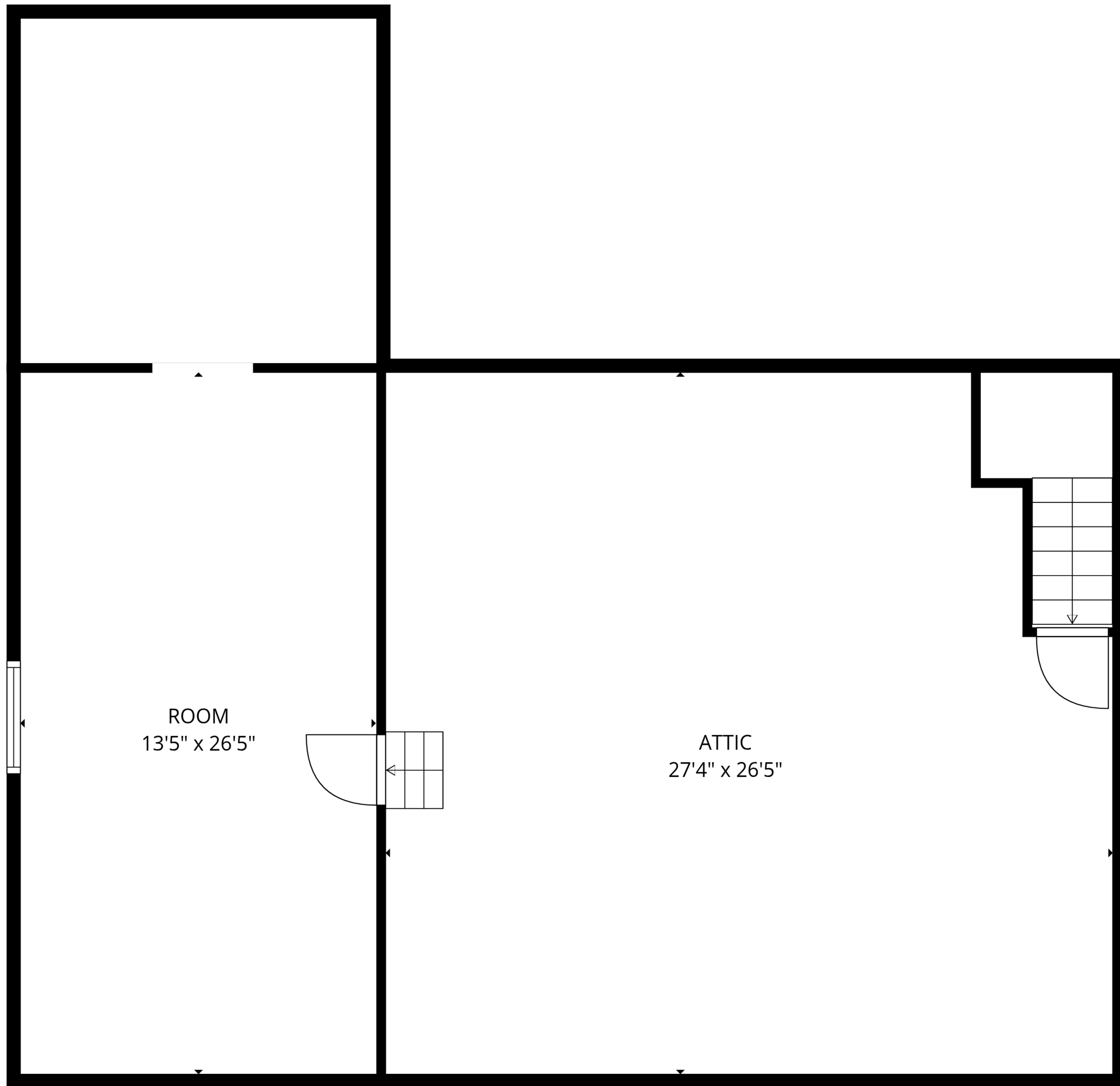
MEASUREMENTS ARE DEEMED RELIABLE BUT ARE NOT GUARANTEED.



**TOTAL: 3498 sq. ft**

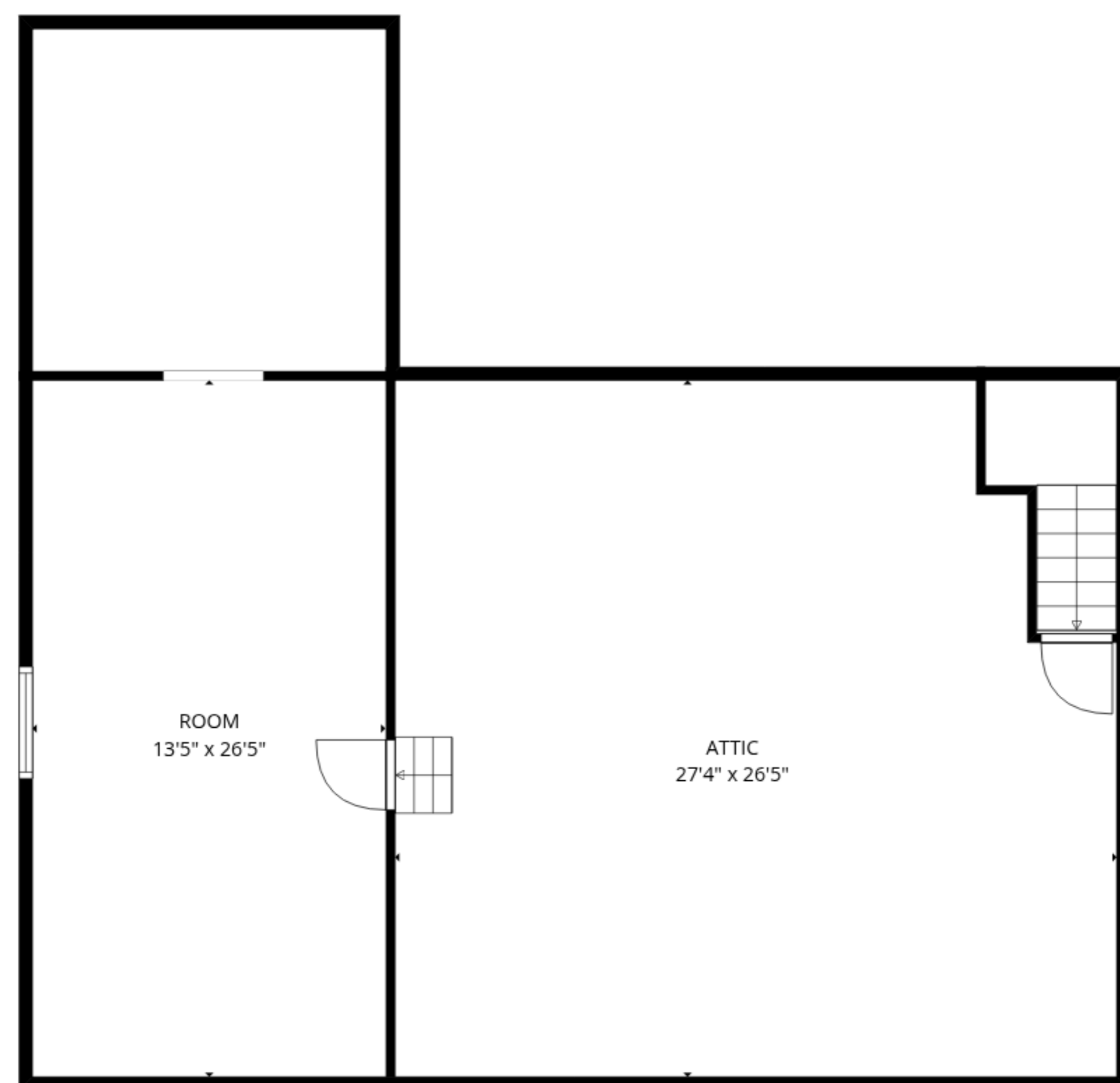
1st floor: 1230 sq. ft, 2nd floor: 1537 sq. ft, 3rd floor: 731 sq. ft  
 EXCLUDED AREAS: GARAGE: 1214 sq. ft, DECK: 231 sq. ft, COVERED DECK: 226 sq. ft,  
 ROOM: 359 sq. ft, LOW CEILING: 174 sq. ft, WALLS: 338 sq. ft

MEASUREMENTS ARE DEEMED RELIABLE BUT ARE NOT GUARANTEED.

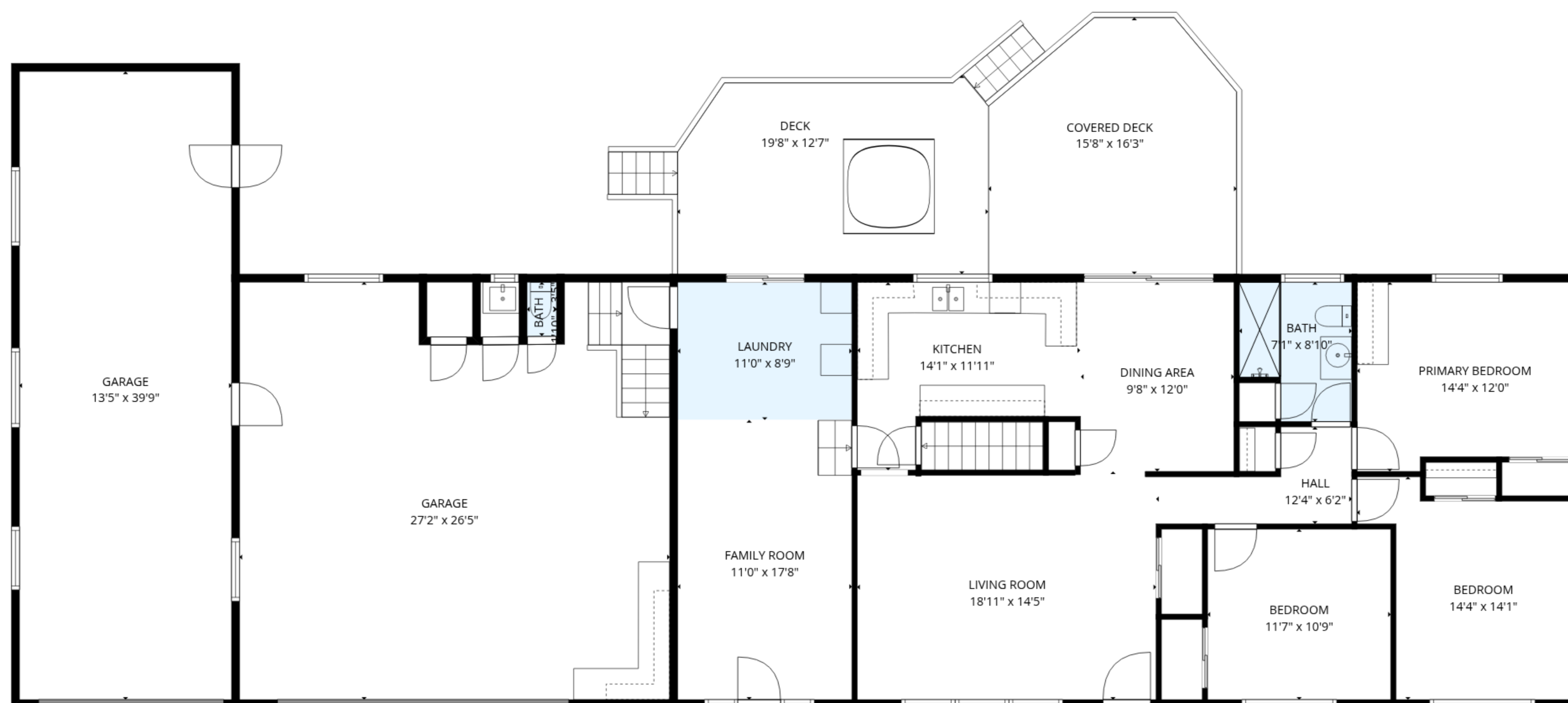


**TOTAL: 3498 sq. ft**  
1st floor: 1230 sq. ft, 2nd floor: 1537 sq. ft, 3rd floor: 731 sq. ft  
EXCLUDED AREAS: GARAGE: 1214 sq. ft, DECK: 231 sq. ft, COVERED DECK: 226 sq. ft,  
ROOM: 359 sq. ft, LOW CEILING: 174 sq. ft, WALLS: 338 sq. ft

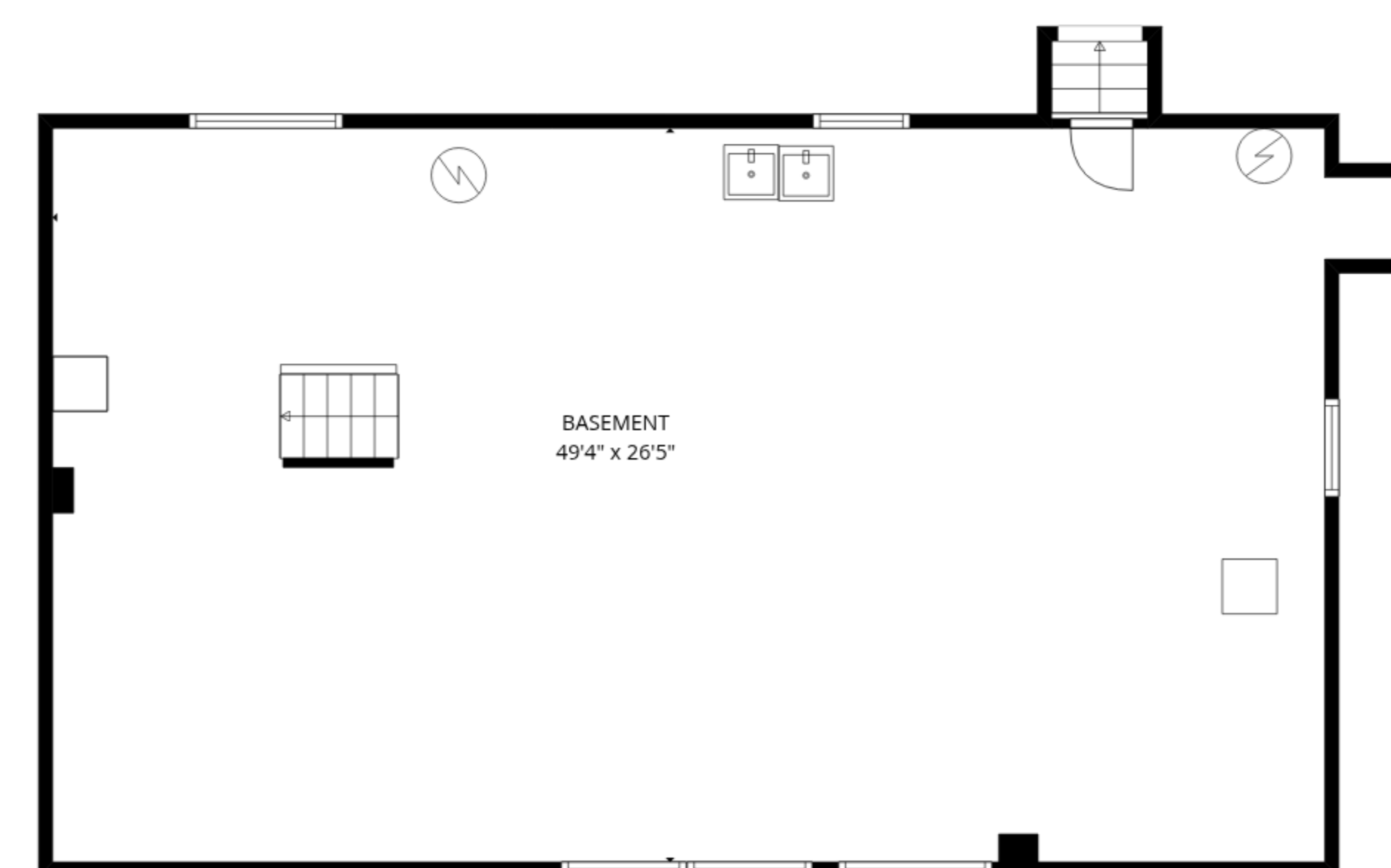
MEASUREMENTS ARE DEEMED RELIABLE BUT ARE NOT GUARANTEED.



3rd floor



2nd floor



1st floor

**TOTAL: 3498 sq. ft**

1st floor: 1230 sq. ft, 2nd floor: 1537 sq. ft, 3rd floor: 731 sq. ft  
 EXCLUDED AREAS: GARAGE: 1214 sq. ft, DECK: 231 sq. ft, COVERED DECK: 226 sq. ft,  
 ROOM: 359 sq. ft, LOW CEILING: 174 sq. ft, WALLS: 338 sq. ft

MEASUREMENTS ARE DEEMED RELIABLE BUT ARE NOT GUARANTEED.