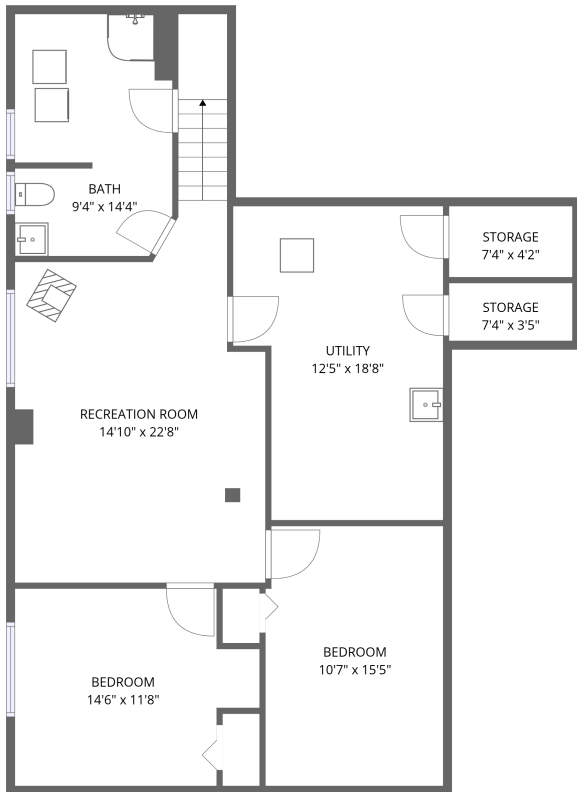
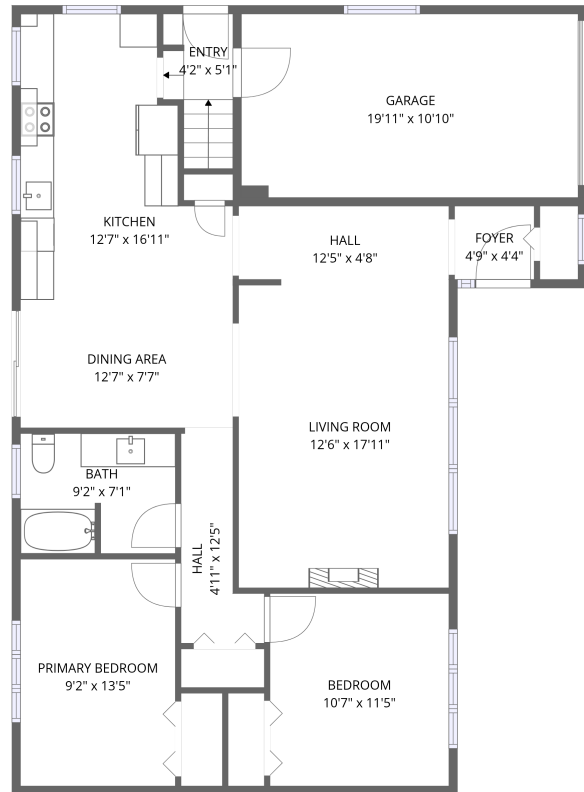


Home data report

21 Turtleback Way, Stittsville, Ontario, Canada, K2S 1P8



Basement 1



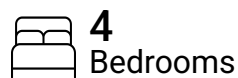
1st floor

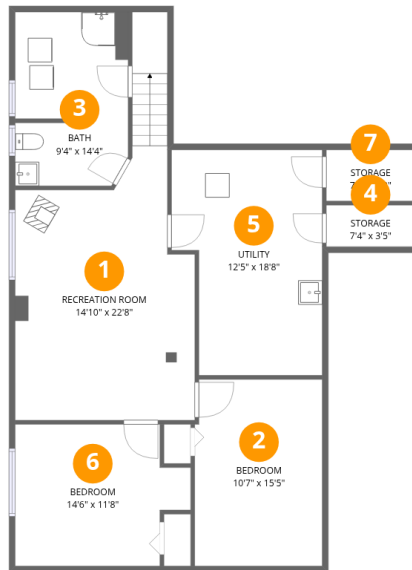
Total Area: 1856 sq. ft

Basement 1: 807 sq. ft, 1st Floor: 1049 sq. ft

Excluded: Utility 211 sq. ft, Storage 59 sq. ft, Garage 217 sq. ft, Walls: 176 sq. ft

Property summary





Room dimensions

Floor 1 Below grade

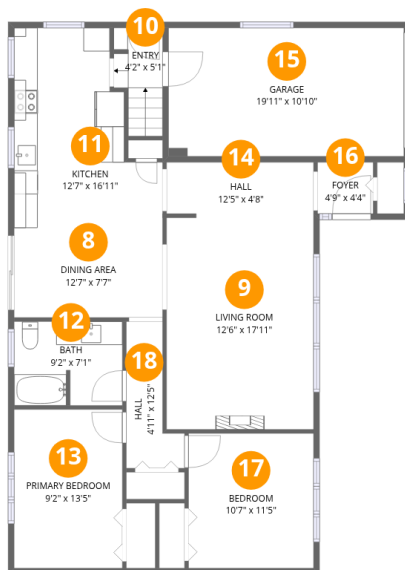
Total:807sqft

Excluded: 270sqft

#		Dimensions	sqft	Counted as living area
1	Recreation Room	14'10" x 22'8"	337 sq. ft	Yes
2	Bedroom	10'7" x 15'5"	162 sq. ft	Yes
3	Bath	9'4" x 14'4"	134 sq. ft	Yes
4	Storage	7'4" x 3'5"	25 sq. ft	No
5	Utility	12'5" x 18'8"	232 sq. ft	No
6	Bedroom	14'6" x 11'8"	170 sq. ft	Yes
7	Storage	7'4" x 4'2"	31 sq. ft	No

Home data report

21 Turtleback Way, Stittsville, Ontario, Canada, K2S 1P8



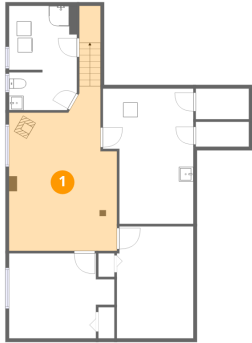
Room dimensions

Floor 2

Total:1049sqft Excluded: 217sqft

#		Dimensions	sqft	Counted as living area
8	Dining Area	12'7" x 7'7"	95 sq. ft	Yes
9	Living Room	12'6" x 17'11"	224 sq. ft	Yes
10	Entry	4'2" x 5'1"	21 sq. ft	Yes
11	Kitchen	12'7" x 16'11"	213 sq. ft	Yes
12	Bath	9'2" x 7'1"	65 sq. ft	Yes
13	Primary Bedroom	9'2" x 13'5"	123 sq. ft	Yes
14	Hall	12'5" x 4'8"	58 sq. ft	Yes
15	Garage	19'11" x 10'10"	216 sq. ft	No
16	Foyer	4'9" x 4'4"	21 sq. ft	Yes
17	Bedroom	10'7" x 11'5"	121 sq. ft	Yes
18	Hall	4'11" x 12'5"	61 sq. ft	Yes

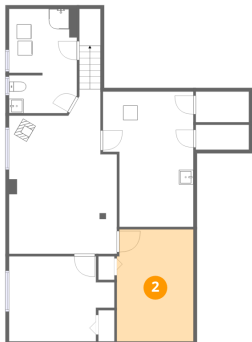
1 Floor 1 - Recreation Room



Dimensions: 14'10" x 22'8"
Area: 337 sq. ft
Counted as living area: Yes

Heated: Yes
Finished: Yes
Enclosed: Yes
Contiguous: Yes
Permitted: Yes
Wet space: No
Addition: No
Conversion: No

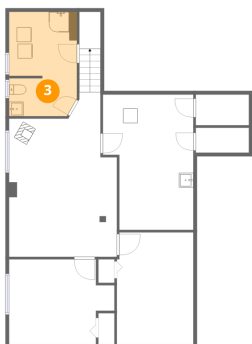
2 Floor 1 - Bedroom



Dimensions: 10'7" x 15'5"
Area: 162 sq. ft
Counted as living area: Yes

Heated: Yes
Finished: Yes
Enclosed: Yes
Contiguous: Yes
Permitted: Yes
Wet space: No
Addition: No
Conversion: No

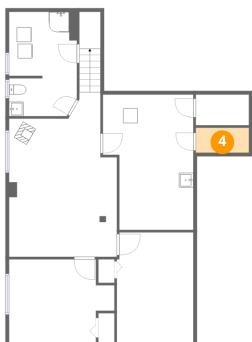
3 Floor 1 - Bath



Dimensions: 9'4" x 14'4"
Area: 134 sq. ft
Counted as living area: Yes

Heated: Yes
Finished: Yes
Enclosed: Yes
Contiguous: Yes
Permitted: Yes
Wet space: Yes
Addition: No
Conversion: No

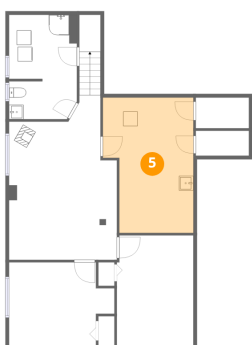
4 Floor 1 - Storage



Dimensions: 7'4" x 3'5"
Area: 25 sq. ft
Counted as living area: No

Heated: No
Finished: No
Enclosed: No
Contiguous: Yes
Permitted: Yes
Wet space: No
Addition: No
Conversion: No

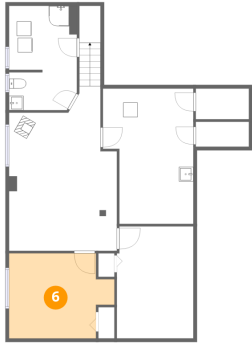
5 Floor 1 - Utility



Dimensions: 12'5" x 18'8"
Area: 232 sq. ft
Counted as living area: No

Heated: Yes
Finished: No
Enclosed: Yes
Contiguous: Yes
Permitted: Yes
Wet space: No
Addition: No
Conversion: No

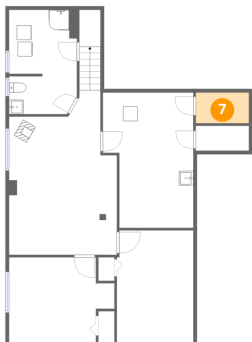
6 Floor 1 - Bedroom



Dimensions: 14'6" x 11'8"
Area: 170 sq. ft
Counted as living area: Yes

Heated: Yes
Finished: Yes
Enclosed: Yes
Contiguous: Yes
Permitted: Yes
Wet space: No
Addition: No
Conversion: No

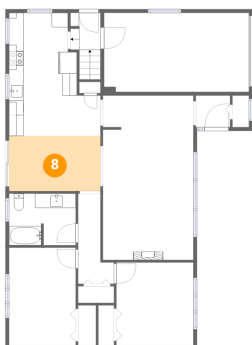
7 Floor 1 - Storage



Dimensions: 7'4" x 4'2"
Area: 31 sq. ft
Counted as living area: No

Heated: No
Finished: No
Enclosed: No
Contiguous: Yes
Permitted: Yes
Wet space: No
Addition: No
Conversion: No

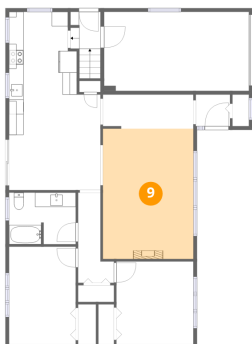
8 Floor 2 - Dining Area



Dimensions: 12'7" x 7'7"
Area: 95 sq. ft
Counted as living area: Yes

Heated: Yes
Finished: Yes
Enclosed: Yes
Contiguous: Yes
Permitted: Yes
Wet space: No
Addition: No
Conversion: No

9 Floor 2 - Living Room



Dimensions: 12'6" x 17'11"
Area: 224 sq. ft
Counted as living area: Yes

Heated: Yes
Finished: Yes
Enclosed: Yes
Contiguous: Yes
Permitted: Yes
Wet space: No
Addition: No
Conversion: No

10 Floor 2 - Entry



Dimensions: 4'2" x 5'1"
Area: 21 sq. ft
Counted as living area: Yes

Heated: Yes
Finished: Yes
Enclosed: Yes
Contiguous: Yes
Permitted: Yes
Wet space: No
Addition: No
Conversion: No

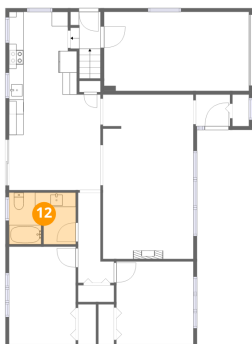
11 Floor 2 - Kitchen



Dimensions: 12'7" x 16'11"
Area: 213 sq. ft
Counted as living area: Yes

Heated: Yes
Finished: Yes
Enclosed: Yes
Contiguous: Yes
Permitted: Yes
Wet space: No
Addition: No
Conversion: No

12 Floor 2 - Bath



Dimensions: 9'2" x 7'1"
Area: 65 sq. ft
Counted as living area: Yes

Heated: Yes
Finished: Yes
Enclosed: Yes
Contiguous: Yes
Permitted: Yes
Wet space: Yes
Addition: No
Conversion: No

13 Floor 2 - Primary Bedroom



Dimensions: 9'2" x 13'5"
Area: 123 sq. ft
Counted as living area: Yes

Heated: Yes
Finished: Yes
Enclosed: Yes
Contiguous: Yes
Permitted: Yes
Wet space: No
Addition: No
Conversion: No

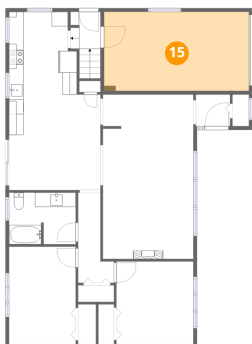
14 Floor 2 - Hall



Dimensions: 12'5" x 4'8"
Area: 58 sq. ft
Counted as living area: Yes

Heated: Yes
Finished: Yes
Enclosed: Yes
Contiguous: Yes
Permitted: Yes
Wet space: No
Addition: No
Conversion: No

15 Floor 2 - Garage



Dimensions: 19'11" x 10'10"

Area: 216 sq. ft

Counted as living area: No

Heated: No

Finished: No

Enclosed: Yes

Contiguous: Yes

Permitted: Yes

Wet space: No

Addition: No

Conversion: No

16 Floor 2 - Foyer



Dimensions: 4'9" x 4'4"

Area: 21 sq. ft

Counted as living area: Yes

Heated: Yes

Finished: Yes

Enclosed: Yes

Contiguous: Yes

Permitted: Yes

Wet space: No

Addition: No

Conversion: No

17 Floor 2 - Bedroom



Dimensions: 10'7" x 11'5"

Area: 121 sq. ft

Counted as living area: Yes

Heated: Yes

Finished: Yes

Enclosed: Yes

Contiguous: Yes

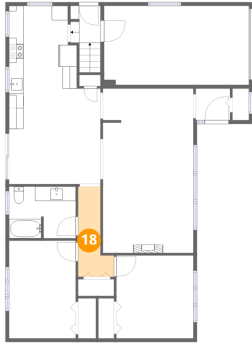
Permitted: Yes

Wet space: No

Addition: No

Conversion: No

18 Floor 2 - Hall



Dimensions: 4'11" x 12'5"
Area: 61 sq. ft
Counted as living area: Yes

Heated: Yes
Finished: Yes
Enclosed: Yes
Contiguous: Yes
Permitted: Yes
Wet space: No
Addition: No
Conversion: No