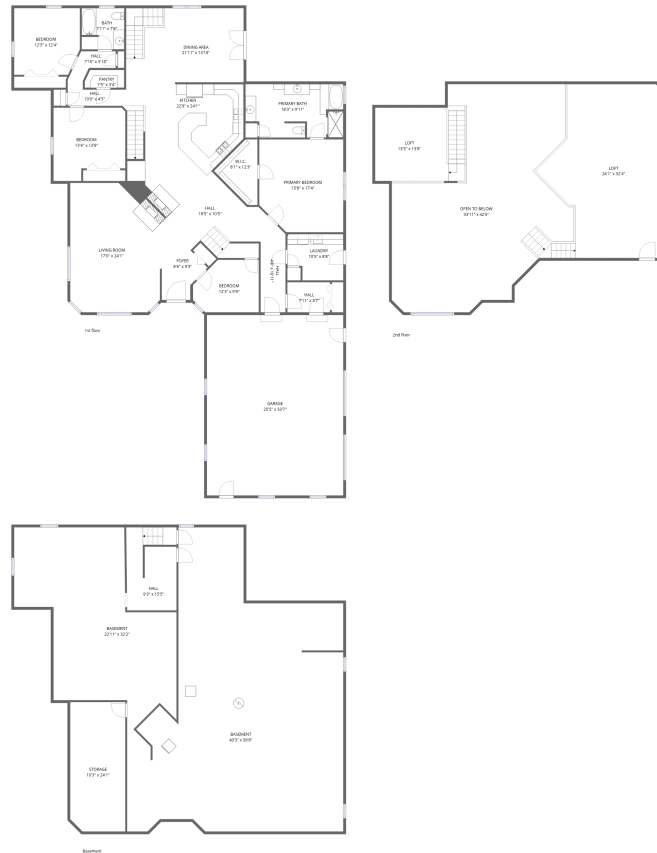


Home data report

# 34 Pine Ridge Rd, Moorcroft, WY, US



## Total Area: 3700 sq. ft

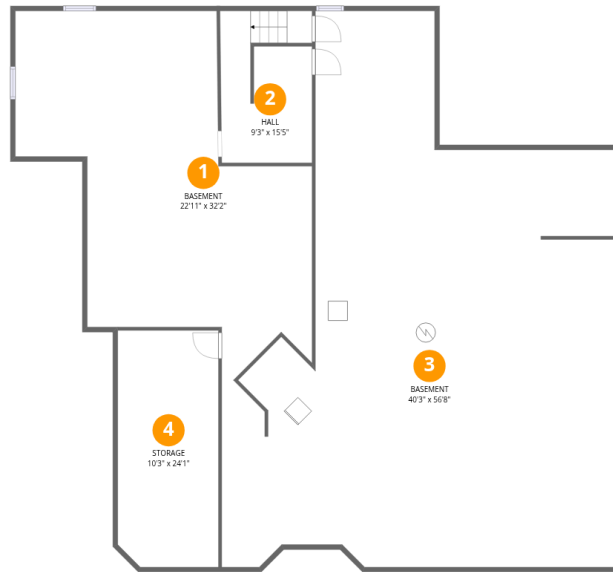
Basement: 0 sq. ft, 1st Floor: 2805 sq. ft, 2nd Floor: 895 sq. ft

Excluded: Hall 158 sq. ft, Basement 2402 sq. ft, Storage 245 sq. ft, Garage 853 sq. ft, Open to below 969 sq. ft, Walls: 379 sq. ft

## Property summary



# 34 Pine Ridge Rd, Moorcroft, WY, US



## Room dimensions

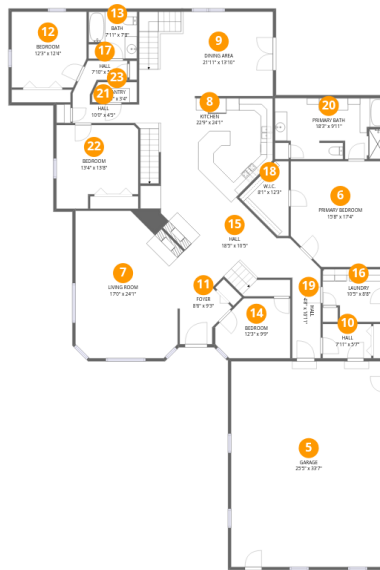
Floor 1 Below grade

Total: 0sqft

Excluded: 2805sqft

#		Dimensions	sqft	Counted as living area
1	Basement	22'11" x 32'2"	722 sq. ft	No
2	Hall	9'3" x 15'5"	140 sq. ft	No
3	Basement	40'3" x 56'8"	1654 sq. ft	No
4	Storage	10'3" x 24'1"	245 sq. ft	No

# 34 Pine Ridge Rd, Moorcroft, WY, US



## Room dimensions

Floor 2

Total:2805sqft

Excluded: 853sqft

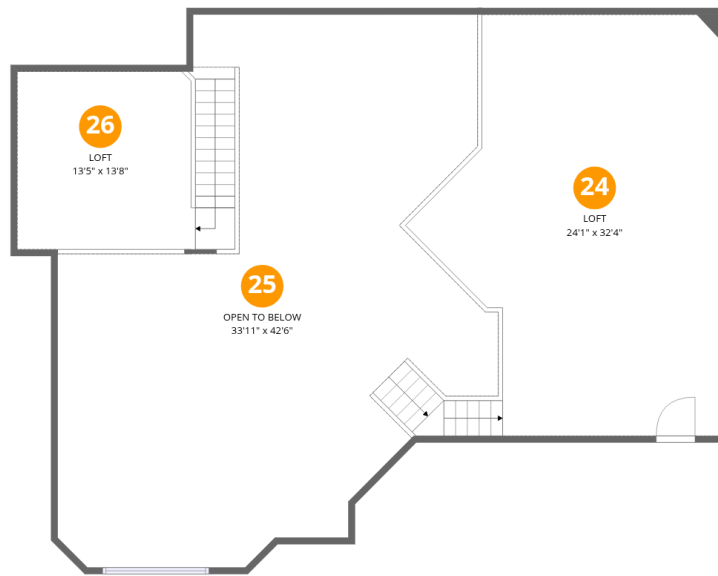
#		Dimensions	sqft	Counted as living area
5	Garage	25'5" x 33'7"	853 sq. ft	No
6	Primary Bedroom	15'8" x 17'4"	258 sq. ft	Yes
7	Living Room	17'0" x 24'1"	380 sq. ft	Yes
8	Kitchen	22'9" x 24'1"	403 sq. ft	Yes
9	Dining Area	21'11" x 13'10"	302 sq. ft	Yes
10	Hall	7'11" x 5'7"	45 sq. ft	Yes
11	Foyer	8'6" x 9'3"	60 sq. ft	Yes
12	Bedroom	12'3" x 12'4"	147 sq. ft	Yes
13	Bath	7'11" x 7'8"	60 sq. ft	Yes
14	Bedroom	12'3" x 9'9"	106 sq. ft	Yes
15	Hall	18'5" x 10'5"	195 sq. ft	Yes

Home data report

**34 Pine Ridge Rd, Moorcroft, WY, US**

#		Dimensions	sqft	Counted as living area
16	Laundry	10'5" x 8'8"	82 sq. ft	Yes
17	Hall	7'10" x 5'10"	30 sq. ft	Yes
18	W.I.C.	8'1" x 12'3"	62 sq. ft	Yes
19	Hall	4'8" x 16'11"	78 sq. ft	Yes
20	Primary Bath	18'3" x 9'11"	170 sq. ft	Yes
21	Hall	10'0" x 4'5"	34 sq. ft	Yes
22	Bedroom	13'4" x 13'8"	163 sq. ft	Yes
23	Pantry	7'5" x 3'4"	24 sq. ft	Yes

# 34 Pine Ridge Rd, Moorcroft, WY, US



## Room dimensions

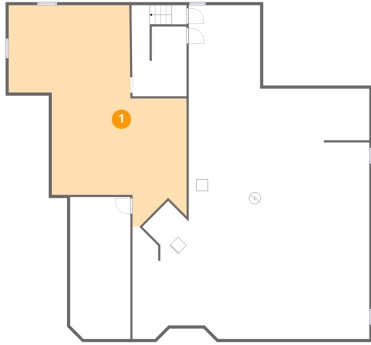
Floor 3

Total:895sqft

Excluded: 969sqft

#		Dimensions	sqft	Counted as living area
24	Loft	24'1" x 32'4"	656 sq. ft	Yes
25	Open To Below	33'11" x 42'6"	969 sq. ft	No
26	Loft	13'5" x 13'8"	239 sq. ft	Yes

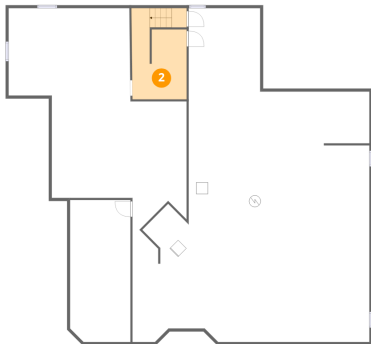
## 1 Floor 1 - Basement



Dimensions: 22'11" x 32'2"  
Area: 722 sq. ft  
Counted as living area: No

Heated: Yes  
Finished: No  
Enclosed: Yes  
Contiguous: Yes  
Permitted: Yes  
Wet space: No  
Addition: No  
Conversion: No

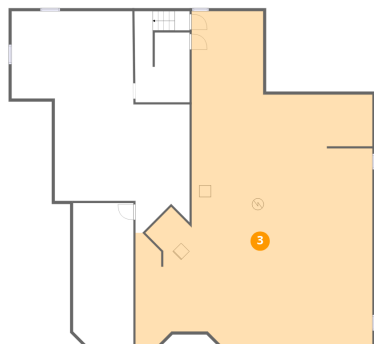
## 2 Floor 1 - Hall



Dimensions: 9'3" x 15'5"  
Area: 140 sq. ft  
Counted as living area: No

Heated: Yes  
Finished: No  
Enclosed: Yes  
Contiguous: Yes  
Permitted: Yes  
Wet space: No  
Addition: No  
Conversion: No

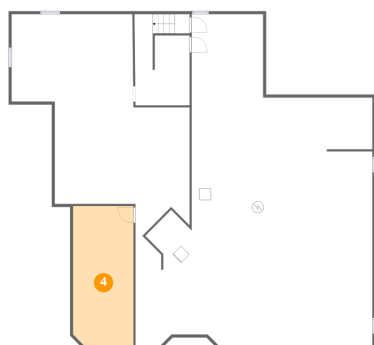
### 3 Floor 1 - Basement



Dimensions: 40'3" x 56'8"  
Area: 1654 sq. ft  
Counted as living area: No

Heated: Yes  
Finished: No  
Enclosed: Yes  
Contiguous: Yes  
Permitted: Yes  
Wet space: No  
Addition: No  
Conversion: No

### 4 Floor 1 - Storage



Dimensions: 10'3" x 24'1"  
Area: 245 sq. ft  
Counted as living area: No

Heated: No  
Finished: No  
Enclosed: No  
Contiguous: Yes  
Permitted: Yes  
Wet space: No  
Addition: No  
Conversion: No

### 5 Floor 2 - Garage



Dimensions: 25'5" x 33'7"  
Area: 853 sq. ft  
Counted as living area: No

Heated: No  
Finished: No  
Enclosed: Yes  
Contiguous: Yes  
Permitted: Yes  
Wet space: No  
Addition: No  
Conversion: No

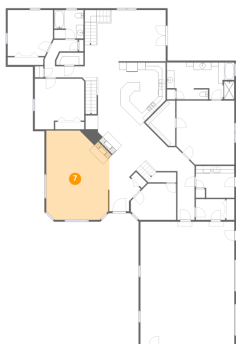
## 6 Floor 2 - Primary Bedroom



Dimensions: 15'8" x 17'4"  
Area: 258 sq. ft  
Counted as living area: Yes

Heated: Yes  
Finished: Yes  
Enclosed: Yes  
Contiguous: Yes  
Permitted: Yes  
Wet space: No  
Addition: No  
Conversion: No

## 7 Floor 2 - Living Room



Dimensions: 17'0" x 24'1"  
Area: 380 sq. ft  
Counted as living area: Yes

Heated: Yes  
Finished: Yes  
Enclosed: Yes  
Contiguous: Yes  
Permitted: Yes  
Wet space: No  
Addition: No  
Conversion: No

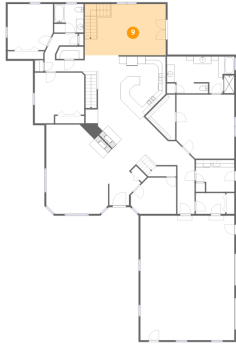
## 8 Floor 2 - Kitchen



Dimensions: 22'9" x 24'1"  
Area: 403 sq. ft  
Counted as living area: Yes

Heated: Yes  
Finished: Yes  
Enclosed: Yes  
Contiguous: Yes  
Permitted: Yes  
Wet space: No  
Addition: No  
Conversion: No

## 9 Floor 2 - Dining Area



Dimensions: 21'11" x 13'10"  
Area: 302 sq. ft  
Counted as living area: Yes

Heated: Yes  
Finished: Yes  
Enclosed: Yes  
Contiguous: Yes  
Permitted: Yes  
Wet space: No  
Addition: No  
Conversion: No

## 10 Floor 2 - Hall



Dimensions: 7'11" x 5'7"  
Area: 45 sq. ft  
Counted as living area: Yes

Heated: Yes  
Finished: Yes  
Enclosed: Yes  
Contiguous: Yes  
Permitted: Yes  
Wet space: No  
Addition: No  
Conversion: No

## 11 Floor 2 - Foyer



Dimensions: 8'6" x 9'3"  
Area: 60 sq. ft  
Counted as living area: Yes

Heated: Yes  
Finished: Yes  
Enclosed: Yes  
Contiguous: Yes  
Permitted: Yes  
Wet space: No  
Addition: No  
Conversion: No

**12** Floor 2 - Bedroom



Dimensions: 12'3" x 12'4"  
Area: 147 sq. ft  
Counted as living area: Yes

Heated: Yes  
Finished: Yes  
Enclosed: Yes  
Contiguous: Yes  
Permitted: Yes  
Wet space: No  
Addition: No  
Conversion: No

**13** Floor 2 - Bath



Dimensions: 7'11" x 7'8"  
Area: 60 sq. ft  
Counted as living area: Yes

Heated: Yes  
Finished: Yes  
Enclosed: Yes  
Contiguous: Yes  
Permitted: Yes  
Wet space: Yes  
Addition: No  
Conversion: No

**14** Floor 2 - Bedroom



Dimensions: 12'3" x 9'9"  
Area: 106 sq. ft  
Counted as living area: Yes

Heated: Yes  
Finished: Yes  
Enclosed: Yes  
Contiguous: Yes  
Permitted: Yes  
Wet space: No  
Addition: No  
Conversion: No

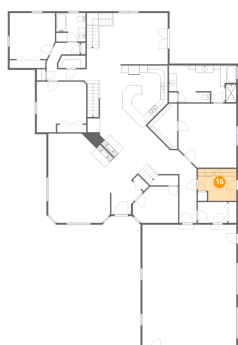
**15** Floor 2 - Hall



Dimensions: 18'5" x 10'5"  
Area: 195 sq. ft  
Counted as living area: Yes

Heated: Yes  
Finished: Yes  
Enclosed: Yes  
Contiguous: Yes  
Permitted: Yes  
Wet space: No  
Addition: No  
Conversion: No

**16** Floor 2 - Laundry



Dimensions: 10'5" x 8'8"  
Area: 82 sq. ft  
Counted as living area: Yes

Heated: Yes  
Finished: Yes  
Enclosed: Yes  
Contiguous: Yes  
Permitted: Yes  
Wet space: No  
Addition: No  
Conversion: No

**17** Floor 2 - Hall



Dimensions: 7'10" x 5'10"  
Area: 30 sq. ft  
Counted as living area: Yes

Heated: Yes  
Finished: Yes  
Enclosed: Yes  
Contiguous: Yes  
Permitted: Yes  
Wet space: No  
Addition: No  
Conversion: No

**18** Floor 2 - W.I.C.



Dimensions: 8'1" x 12'3"  
Area: 62 sq. ft  
Counted as living area: Yes

Heated: Yes  
Finished: Yes  
Enclosed: Yes  
Contiguous: Yes  
Permitted: Yes  
Wet space: No  
Addition: No  
Conversion: No

**19** Floor 2 - Hall



Dimensions: 4'8" x 16'11"  
Area: 78 sq. ft  
Counted as living area: Yes

Heated: Yes  
Finished: Yes  
Enclosed: Yes  
Contiguous: Yes  
Permitted: Yes  
Wet space: No  
Addition: No  
Conversion: No

**20** Floor 2 - Primary Bath



Dimensions: 18'3" x 9'11"  
Area: 170 sq. ft  
Counted as living area: Yes

Heated: Yes  
Finished: Yes  
Enclosed: Yes  
Contiguous: Yes  
Permitted: Yes  
Wet space: Yes  
Addition: No  
Conversion: No

**21** Floor 2 - Hall

---



Dimensions: 10'0" x 4'5"  
Area: 34 sq. ft  
Counted as living area: Yes

Heated: Yes  
Finished: Yes  
Enclosed: Yes  
Contiguous: Yes  
Permitted: Yes  
Wet space: No  
Addition: No  
Conversion: No

**22** Floor 2 - Bedroom

---



Dimensions: 13'4" x 13'8"  
Area: 163 sq. ft  
Counted as living area: Yes

Heated: Yes  
Finished: Yes  
Enclosed: Yes  
Contiguous: Yes  
Permitted: Yes  
Wet space: No  
Addition: No  
Conversion: No

**23** Floor 2 - Pantry

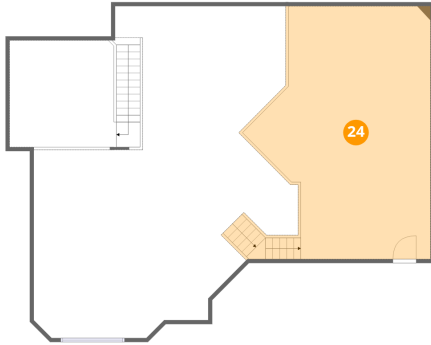
---



Dimensions: 7'5" x 3'4"  
Area: 24 sq. ft  
Counted as living area: Yes

Heated: Yes  
Finished: Yes  
Enclosed: Yes  
Contiguous: Yes  
Permitted: Yes  
Wet space: No  
Addition: No  
Conversion: No

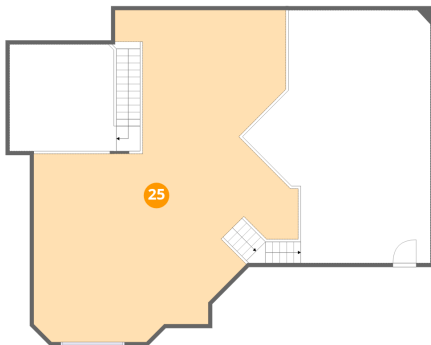
**24** Floor 3 - Loft



Dimensions: 24'1" x 32'4"  
Area: 656 sq. ft  
Counted as living area: Yes

Heated: Yes  
Finished: Yes  
Enclosed: Yes  
Contiguous: Yes  
Permitted: Yes  
Wet space: No  
Addition: No  
Conversion: No

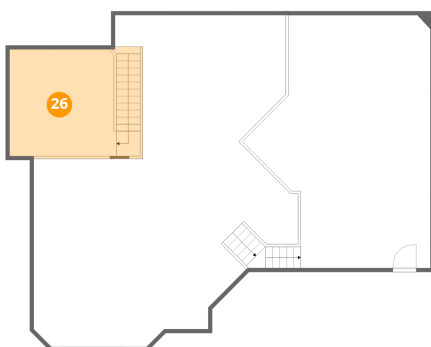
**25** Floor 3 - Open To Below



Dimensions: 33'11" x 42'6"  
Area: 969 sq. ft  
Counted as living area: No

Heated: No  
Finished: No  
Enclosed: No  
Contiguous: Yes  
Permitted: No  
Wet space: No  
Addition: No  
Conversion: No

**26** Floor 3 - Loft



Dimensions: 13'5" x 13'8"  
Area: 239 sq. ft  
Counted as living area: No

Heated: Yes  
Finished: Yes  
Enclosed: Yes  
Contiguous: No  
Permitted: Yes  
Wet space: No  
Addition: No  
Conversion: No