

Home data report

# 514 Armel Dr, Collierville, TN, US



**Total Area: 1915 sq. ft**

1st Floor: 1206 sq. ft, 2nd Floor: 709 sq. ft

Excluded: Stairwell 74 sq. ft, Open to below 17 sq. ft, Walls: 160 sq. ft

## Property summary

 **2** Floors

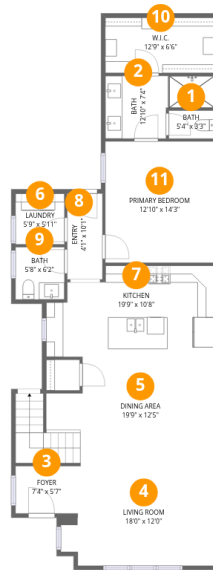
 **3** Bedrooms

 **2** Bathrooms

 **1** Half baths

Home data report

514 Armel Dr, Collierville, TN, US



Room dimensions

Floor 1

Total: 1206 sqft

Excluded: 0 sqft

#		Dimensions	sqft	Counted as living area
1	Bath	5'4" x 3'3"	18 sq. ft	Yes
2	Bath	12'10" x 7'4"	94 sq. ft	Yes
3	Foyer	7'4" x 5'7"	41 sq. ft	Yes
4	Living Room	18'0" x 12'0"	216 sq. ft	Yes
5	Dining Area	19'9" x 12'5"	246 sq. ft	Yes
6	Laundry	5'9" x 5'11"	34 sq. ft	Yes
7	Kitchen	19'9" x 10'8"	211 sq. ft	Yes
8	Entry	4'1" x 10'1"	42 sq. ft	Yes
9	Bath	5'8" x 6'2"	35 sq. ft	Yes
10	W.I.C.	12'9" x 6'6"	82 sq. ft	Yes
11	Primary Bedroom	12'10" x 14'3"	182 sq. ft	Yes



## Room dimensions

Floor 2

Total: 709 sqft Excluded: 91 sqft

#		Dimensions	sqft	Counted as living area
12	Bedroom	12'9" x 13'11"	178 sq. ft	Yes
13	W.I.C.	4'7" x 7'3"	33 sq. ft	Yes
14	Bedroom	12'0" x 12'5"	149 sq. ft	Yes
15	Bath	8'2" x 12'7"	102 sq. ft	Yes
16	Hall	7'3" x 12'1"	87 sq. ft	Yes
17	Sitting Room	10'11" x 10'0"	109 sq. ft	Yes
18	W.I.C.	8'2" x 3'8"	30 sq. ft	Yes
19	Open To Below	3'11" x 4'3"	17 sq. ft	No
20	Hall	4'4" x 4'11"	21 sq. ft	Yes
21	Stairwell	7'7" x 12'1"	92 sq. ft	No

**1** Floor 1 - Bath

---



Dimensions: 5'4" x 3'3"  
Area: 18 sq. ft  
Counted as living area: Yes

Heated: Yes  
Finished: Yes  
Enclosed: Yes  
Contiguous: Yes  
Permitted: Yes  
Wet space: Yes  
Addition: No  
Conversion: No

**2** Floor 1 - Bath

---



Dimensions: 12'10" x 7'4"  
Area: 94 sq. ft  
Counted as living area: Yes

Heated: Yes  
Finished: Yes  
Enclosed: Yes  
Contiguous: Yes  
Permitted: Yes  
Wet space: Yes  
Addition: No  
Conversion: No

### 3 Floor 1 - Foyer



Dimensions: 7'4" x 5'7"  
Area: 41 sq. ft  
Counted as living area: Yes

Heated: Yes  
Finished: Yes  
Enclosed: Yes  
Contiguous: Yes  
Permitted: Yes  
Wet space: No  
Addition: No  
Conversion: No

### 4 Floor 1 - Living Room



Dimensions: 18'0" x 12'0"  
Area: 216 sq. ft  
Counted as living area: Yes

Heated: Yes  
Finished: Yes  
Enclosed: Yes  
Contiguous: Yes  
Permitted: Yes  
Wet space: No  
Addition: No  
Conversion: No

### 5 Floor 1 - Dining Area



Dimensions: 19'9" x 12'5"  
Area: 246 sq. ft  
Counted as living area: Yes

Heated: Yes  
Finished: Yes  
Enclosed: Yes  
Contiguous: Yes  
Permitted: Yes  
Wet space: No  
Addition: No  
Conversion: No

### 6 Floor 1 - Laundry



Dimensions: 5'9" x 5'11"  
Area: 34 sq. ft  
Counted as living area: Yes

Heated: Yes  
Finished: Yes  
Enclosed: Yes  
Contiguous: Yes  
Permitted: Yes  
Wet space: No  
Addition: No  
Conversion: No

### 7 Floor 1 - Kitchen



Dimensions: 19'9" x 10'8"  
Area: 211 sq. ft  
Counted as living area: Yes

Heated: Yes  
Finished: Yes  
Enclosed: Yes  
Contiguous: Yes  
Permitted: Yes  
Wet space: No  
Addition: No  
Conversion: No

### 8 Floor 1 - Entry



Dimensions: 4'1" x 10'1"  
Area: 42 sq. ft  
Counted as living area: Yes

Heated: Yes  
Finished: Yes  
Enclosed: Yes  
Contiguous: Yes  
Permitted: Yes  
Wet space: No  
Addition: No  
Conversion: No

### 9 Floor 1 - Bath



Dimensions: 5'8" x 6'2"  
Area: 35 sq. ft  
Counted as living area: Yes

Heated: Yes  
Finished: Yes  
Enclosed: Yes  
Contiguous: Yes  
Permitted: Yes  
Wet space: Yes  
Addition: No  
Conversion: No

### 10 Floor 1 - W.I.C.



Dimensions: 12'9" x 6'6"  
Area: 82 sq. ft  
Counted as living area: Yes

Heated: Yes  
Finished: Yes  
Enclosed: Yes  
Contiguous: Yes  
Permitted: Yes  
Wet space: No  
Addition: No  
Conversion: No

### 11 Floor 1 - Primary Bedroom

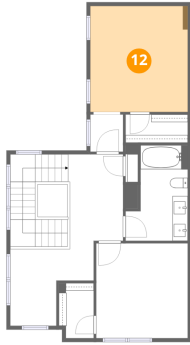


Dimensions: 12'10" x 14'3"  
Area: 182 sq. ft  
Counted as living area: Yes

Heated: Yes  
Finished: Yes  
Enclosed: Yes  
Contiguous: Yes  
Permitted: Yes  
Wet space: No  
Addition: No  
Conversion: No

**12** Floor 2 - Bedroom

---

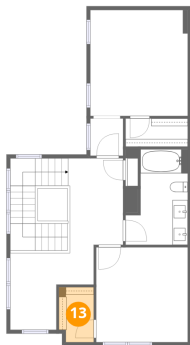


Dimensions: 12'9" x 13'11"  
Area: 178 sq. ft  
Counted as living area: Yes

Heated: Yes  
Finished: Yes  
Enclosed: Yes  
Contiguous: Yes  
Permitted: Yes  
Wet space: No  
Addition: No  
Conversion: No

**13** Floor 2 - W.I.C.

---

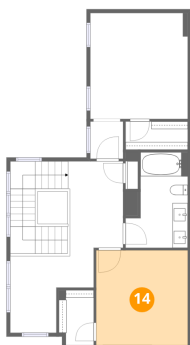


Dimensions: 4'7" x 7'3"  
Area: 33 sq. ft  
Counted as living area: Yes

Heated: Yes  
Finished: Yes  
Enclosed: Yes  
Contiguous: Yes  
Permitted: Yes  
Wet space: No  
Addition: No  
Conversion: No

**14** Floor 2 - Bedroom

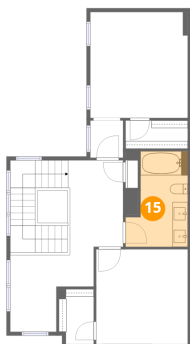
---



Dimensions: 12'0" x 12'5"  
Area: 149 sq. ft  
Counted as living area: Yes

Heated: Yes  
Finished: Yes  
Enclosed: Yes  
Contiguous: Yes  
Permitted: Yes  
Wet space: No  
Addition: No  
Conversion: No

**15** Floor 2 - Bath



Dimensions: 8'2" x 12'7"  
Area: 102 sq. ft  
Counted as living area: Yes

Heated: Yes  
Finished: Yes  
Enclosed: Yes  
Contiguous: Yes  
Permitted: Yes  
Wet space: Yes  
Addition: No  
Conversion: No

**16** Floor 2 - Hall



Dimensions: 7'3" x 12'1"  
Area: 87 sq. ft  
Counted as living area: Yes

Heated: Yes  
Finished: Yes  
Enclosed: Yes  
Contiguous: Yes  
Permitted: Yes  
Wet space: No  
Addition: No  
Conversion: No

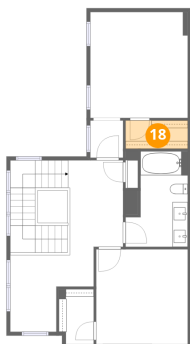
**17** Floor 2 - Sitting Room



Dimensions: 10'11" x 10'0"  
Area: 109 sq. ft  
Counted as living area: Yes

Heated: Yes  
Finished: Yes  
Enclosed: Yes  
Contiguous: Yes  
Permitted: Yes  
Wet space: No  
Addition: No  
Conversion: No

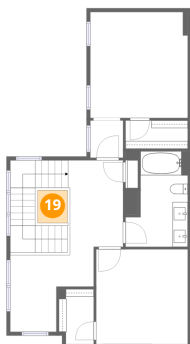
**18** Floor 2 - W.I.C.



Dimensions: 8'2" x 3'8"  
Area: 30 sq. ft  
Counted as living area: Yes

Heated: Yes  
Finished: Yes  
Enclosed: Yes  
Contiguous: Yes  
Permitted: Yes  
Wet space: No  
Addition: No  
Conversion: No

**19** Floor 2 - Open To Below



Dimensions: 3'11" x 4'3"  
Area: 17 sq. ft  
Counted as living area: No

Heated: No  
Finished: No  
Enclosed: No  
Contiguous: Yes  
Permitted: No  
Wet space: No  
Addition: No  
Conversion: No

**20** Floor 2 - Hall



Dimensions: 4'4" x 4'11"  
Area: 21 sq. ft  
Counted as living area: Yes

Heated: Yes  
Finished: Yes  
Enclosed: Yes  
Contiguous: Yes  
Permitted: Yes  
Wet space: No  
Addition: No  
Conversion: No

**21** Floor 2 - Stairwell

---



Dimensions: 7'7" x 12'1"  
Area: 92 sq. ft  
Counted as living area: No

Heated: No  
Finished: No  
Enclosed: No  
Contiguous: Yes  
Permitted: No  
Wet space: No  
Addition: No  
Conversion: No