

Home data report

6170 Chaise Court, Lakeridge, Reno, Washoe County, Nevada,
United States, 89519



Total Area: 2615 sq. ft

1st Floor: 1994 sq. ft, 2nd Floor: 621 sq. ft

Excluded: Garage 534 sq. ft, Undefined 20 sq. ft, Fireplace 15 sq. ft, Open to below 673 sq. ft, Walls: 213 sq. ft

Property summary

 **2** Floors

 **3** Bedrooms

 **2** Bathrooms

Home data report

**6170 Chaise Court, Lakeridge, Reno, Washoe County, Nevada,
United States, 89519**

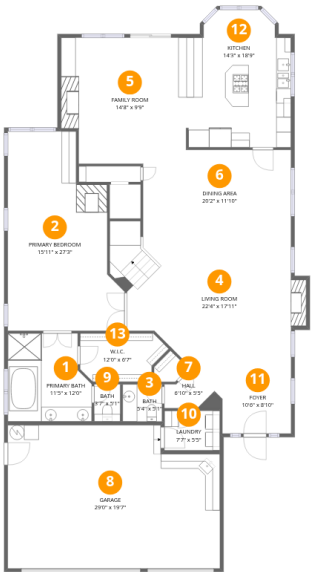


1
Half baths



1
Garages

6170 Chaise Court, Lakeridge, Reno, Washoe County, Nevada,
United States, 89519



Room dimensions

Floor 1 Total:1994sqft Excluded: 569sqft

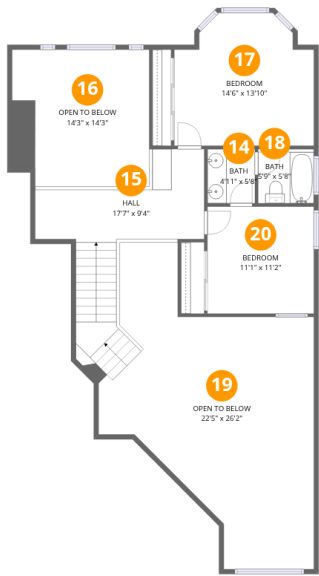
#		Dimensions	sqft	Counted as living area
1	Primary Bath	11'5" x 12'0"	137 sq. ft	Yes
2	Primary Bedroom	15'11" x 27'3"	433 sq. ft	Yes
3	Bath	5'4" x 5'1"	27 sq. ft	Yes
4	Living Room	22'4" x 17'11"	402 sq. ft	Yes
5	Family Room	14'8" x 9'9"	143 sq. ft	Yes
6	Dining Area	20'2" x 11'10"	239 sq. ft	Yes
7	Hall	6'10" x 5'5"	37 sq. ft	Yes
8	Garage	29'0" x 19'7"	566 sq. ft	No
9	Bath	3'7" x 5'1"	18 sq. ft	Yes
10	Laundry	7'7" x 5'5"	41 sq. ft	Yes
11	Foyer	10'6" x 8'10"	93 sq. ft	Yes

Home data report

**6170 Chaise Court, Lakeridge, Reno, Washoe County, Nevada,
United States, 89519**

#		Dimensions	sqft	Counted as living area
12	Kitchen	14'3" x 18'9"	268 sq. ft	Yes
13	W.I.C.	12'0" x 6'7"	80 sq. ft	Yes

6170 Chaise Court, Lakeridge, Reno, Washoe County, Nevada,
United States, 89519



Room dimensions

Floor 2 Total:621sqft Excluded: 673sqft

#		Dimensions	sqft	Counted as living area
14	Bath	4'11" x 5'8"	28 sq. ft	Yes
15	Hall	17'7" x 9'4"	164 sq. ft	Yes
16	Open To Below	14'3" x 14'3"	203 sq. ft	No
17	Bedroom	14'6" x 13'10"	200 sq. ft	Yes
18	Bath	5'9" x 5'8"	33 sq. ft	Yes
19	Open To Below	22'5" x 26'2"	587 sq. ft	No
20	Bedroom	11'1" x 11'2"	123 sq. ft	Yes

6170 Chaise Court, Lakeridge, Reno, Washoe County, Nevada,
United States, 89519

1 Floor 1 - Primary Bath



Dimensions: 11'5" x 12'0"
Area: 137 sq. ft
Counted as living area: Yes

Heated: Yes
Finished: Yes
Enclosed: Yes
Contiguous: Yes
Permitted: Yes
Wet space: Yes
Addition: No
Conversion: No

2 Floor 1 - Primary Bedroom



Dimensions: 15'11" x 27'3"
Area: 433 sq. ft
Counted as living area: Yes

Heated: Yes
Finished: Yes
Enclosed: Yes
Contiguous: Yes
Permitted: Yes
Wet space: No
Addition: No
Conversion: No

6170 Chaise Court, Lakeridge, Reno, Washoe County, Nevada,
United States, 89519

3 Floor 1 - Bath



Dimensions: 5'4" x 5'1"
Area: 27 sq. ft
Counted as living area: Yes

Heated: Yes
Finished: Yes
Enclosed: Yes
Contiguous: Yes
Permitted: Yes
Wet space: Yes
Addition: No
Conversion: No

4 Floor 1 - Living Room



Dimensions: 22'4" x 17'11"
Area: 402 sq. ft
Counted as living area: Yes

Heated: Yes
Finished: Yes
Enclosed: Yes
Contiguous: Yes
Permitted: Yes
Wet space: No
Addition: No
Conversion: No

5 Floor 1 - Family Room

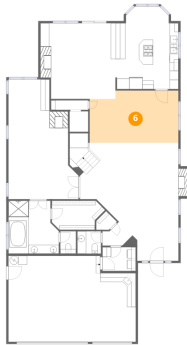


Dimensions: 14'8" x 9'9"
Area: 143 sq. ft
Counted as living area: Yes

Heated: Yes
Finished: Yes
Enclosed: Yes
Contiguous: Yes
Permitted: Yes
Wet space: No
Addition: No
Conversion: No

6170 Chaise Court, Lakeridge, Reno, Washoe County, Nevada,
United States, 89519

6 Floor 1 - Dining Area



Dimensions: 20'2" x 11'10"
Area: 239 sq. ft
Counted as living area: Yes

Heated: Yes
Finished: Yes
Enclosed: Yes
Contiguous: Yes
Permitted: Yes
Wet space: No
Addition: No
Conversion: No

7 Floor 1 - Hall



Dimensions: 6'10" x 5'5"
Area: 37 sq. ft
Counted as living area: Yes

Heated: Yes
Finished: Yes
Enclosed: Yes
Contiguous: Yes
Permitted: Yes
Wet space: No
Addition: No
Conversion: No

8 Floor 1 - Garage



Dimensions: 29'0" x 19'7"
Area: 566 sq. ft
Counted as living area: No

Heated: No
Finished: No
Enclosed: Yes
Contiguous: Yes
Permitted: Yes
Wet space: No
Addition: No
Conversion: No

Home data report

6170 Chaise Court, Lakeridge, Reno, Washoe County, Nevada,
United States, 89519

9 Floor 1 - Bath



Dimensions: 3'7" x 5'1"
Area: 18 sq. ft
Counted as living area: Yes

Heated: Yes
Finished: Yes
Enclosed: Yes
Contiguous: Yes
Permitted: Yes
Wet space: Yes
Addition: No
Conversion: No

10 Floor 1 - Laundry



Dimensions: 7'7" x 5'5"
Area: 41 sq. ft
Counted as living area: Yes

Heated: Yes
Finished: Yes
Enclosed: Yes
Contiguous: Yes
Permitted: Yes
Wet space: No
Addition: No
Conversion: No

11 Floor 1 - Foyer



Dimensions: 10'6" x 8'10"
Area: 93 sq. ft
Counted as living area: Yes

Heated: Yes
Finished: Yes
Enclosed: Yes
Contiguous: Yes
Permitted: Yes
Wet space: No
Addition: No
Conversion: No

Home data report

6170 Chaise Court, Lakeridge, Reno, Washoe County, Nevada,
United States, 89519

12 Floor 1 - Kitchen



Dimensions: 14'3" x 18'9"
Area: 268 sq. ft
Counted as living area: Yes

Heated: Yes
Finished: Yes
Enclosed: Yes
Contiguous: Yes
Permitted: Yes
Wet space: No
Addition: No
Conversion: No

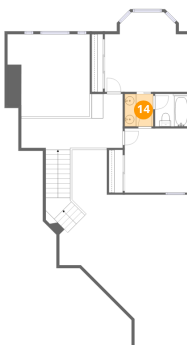
13 Floor 1 - W.I.C.



Dimensions: 12'0" x 6'7"
Area: 80 sq. ft
Counted as living area: Yes

Heated: Yes
Finished: Yes
Enclosed: Yes
Contiguous: Yes
Permitted: Yes
Wet space: No
Addition: No
Conversion: No

14 Floor 2 - Bath

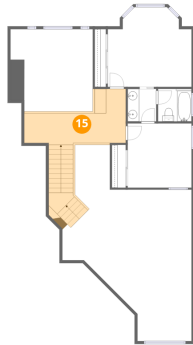


Dimensions: 4'11" x 5'8"
Area: 28 sq. ft
Counted as living area: Yes

Heated: Yes
Finished: Yes
Enclosed: Yes
Contiguous: Yes
Permitted: Yes
Wet space: Yes
Addition: No
Conversion: No

6170 Chaise Court, Lakeridge, Reno, Washoe County, Nevada,
United States, 89519

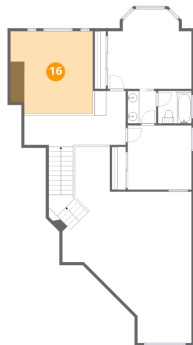
15 Floor 2 - Hall



Dimensions: 17'7" x 9'4"
Area: 164 sq. ft
Counted as living area: Yes

Heated: Yes
Finished: Yes
Enclosed: Yes
Contiguous: Yes
Permitted: Yes
Wet space: No
Addition: No
Conversion: No

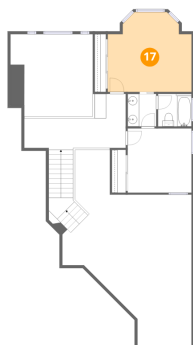
16 Floor 2 - Open To Below



Dimensions: 14'3" x 14'3"
Area: 203 sq. ft
Counted as living area: No

Heated: No
Finished: No
Enclosed: No
Contiguous: Yes
Permitted: No
Wet space: No
Addition: No
Conversion: No

17 Floor 2 - Bedroom

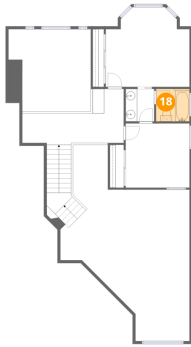


Dimensions: 14'6" x 13'10"
Area: 200 sq. ft
Counted as living area: Yes

Heated: Yes
Finished: Yes
Enclosed: Yes
Contiguous: Yes
Permitted: Yes
Wet space: No
Addition: No
Conversion: No

6170 Chaise Court, Lakeridge, Reno, Washoe County, Nevada,
United States, 89519

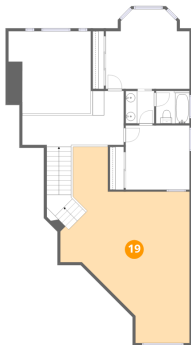
18 Floor 2 - Bath



Dimensions: 5'9" x 5'8"
Area: 33 sq. ft
Counted as living area: Yes

Heated: Yes
Finished: Yes
Enclosed: Yes
Contiguous: Yes
Permitted: Yes
Wet space: Yes
Addition: No
Conversion: No

19 Floor 2 - Open To Below



Dimensions: 22'5" x 26'2"
Area: 587 sq. ft
Counted as living area: No

Heated: No
Finished: No
Enclosed: No
Contiguous: Yes
Permitted: No
Wet space: No
Addition: No
Conversion: No

20 Floor 2 - Bedroom



Dimensions: 11'1" x 11'2"
Area: 123 sq. ft
Counted as living area: Yes

Heated: Yes
Finished: Yes
Enclosed: Yes
Contiguous: Yes
Permitted: Yes
Wet space: No
Addition: No
Conversion: No