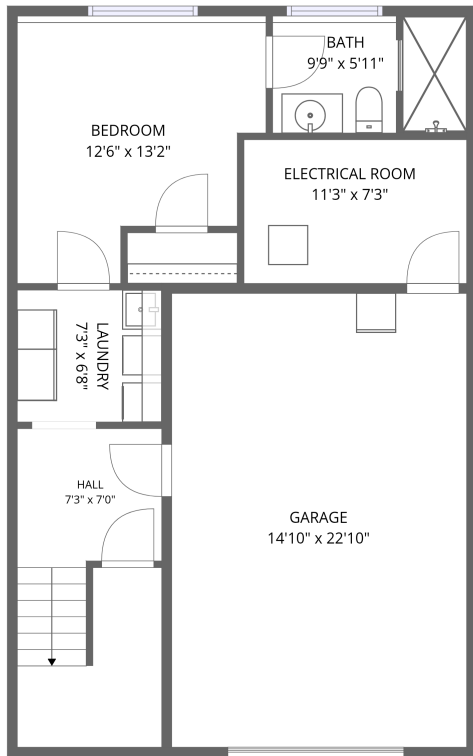
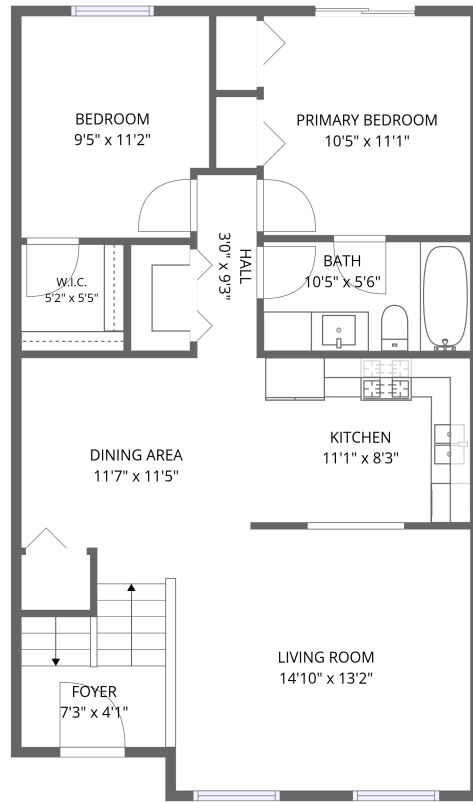


Home data report

322 Summit St, Belle Fourche, SD, US



Basement



1st floor


Total Area: 1260 sq. ft

Basement: 394 sq. ft, 1st Floor: 866 sq. ft

Excluded: Electrical room 81 sq. ft, Garage 340 sq. ft, Walls: 143 sq. ft

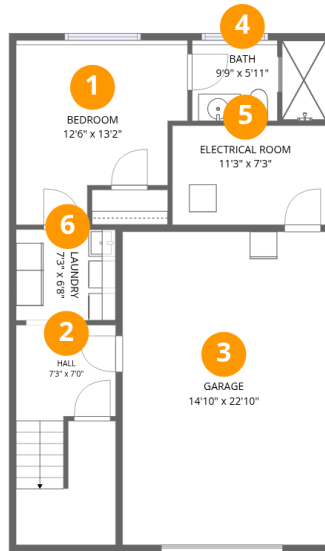
Property summary

 **2** Floors

 **3** Bedrooms

 **2** Bathrooms

 **1** Garages



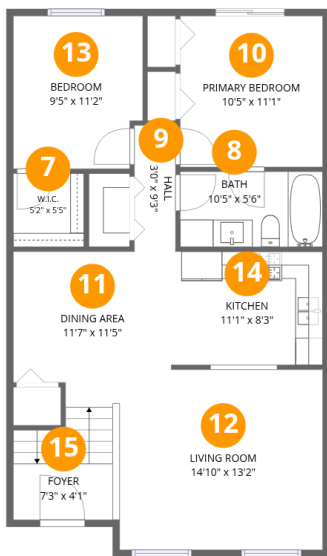
Room dimensions

Floor 1 Below grade

Total:394sqft

Excluded: 421sqft

#		Dimensions	sqft	Counted as living area
1	Bedroom	12'6" x 13'2"	141 sq. ft	Yes
2	Hall	7'3" x 7'0"	114 sq. ft	Yes
3	Garage	14'10" x 22'10"	340 sq. ft	No
4	Bath	9'9" x 5'11"	57 sq. ft	Yes
5	Electrical Room	11'3" x 7'3"	81 sq. ft	No
6	Laundry	7'3" x 6'8"	48 sq. ft	Yes



Room dimensions

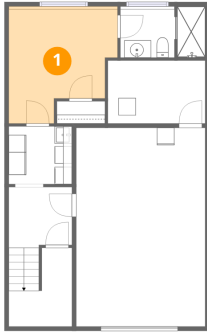
Floor 2

Total:866sqft

Excluded: 0sqft

#		Dimensions	sqft	Counted as living area
7	W.I.C.	5'2" x 5'5"	28 sq. ft	Yes
8	Bath	10'5" x 5'6"	57 sq. ft	Yes
9	Hall	3'0" x 9'3"	28 sq. ft	Yes
10	Primary Bedroom	10'5" x 11'1"	115 sq. ft	Yes
11	Dining Area	11'7" x 11'5"	125 sq. ft	Yes
12	Living Room	14'10" x 13'2"	191 sq. ft	Yes
13	Bedroom	9'5" x 11'2"	103 sq. ft	Yes
14	Kitchen	11'1" x 8'3"	93 sq. ft	Yes
15	Foyer	7'3" x 4'1"	51 sq. ft	Yes

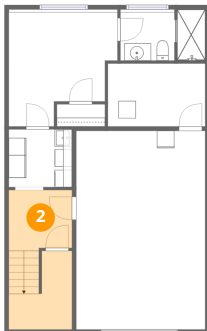
1 Floor 1 - Bedroom



Dimensions: 12'6" x 13'2"
Area: 141 sq. ft
Counted as living area: Yes

Heated: Yes
Finished: Yes
Enclosed: Yes
Contiguous: Yes
Permitted: Yes
Wet space: No
Addition: No
Conversion: No

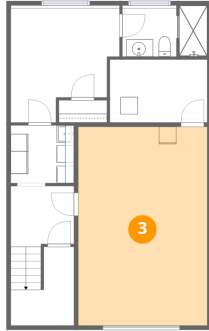
2 Floor 1 - Hall



Dimensions: 7'3" x 7'0"
Area: 114 sq. ft
Counted as living area: Yes

Heated: Yes
Finished: Yes
Enclosed: Yes
Contiguous: Yes
Permitted: Yes
Wet space: No
Addition: No
Conversion: No

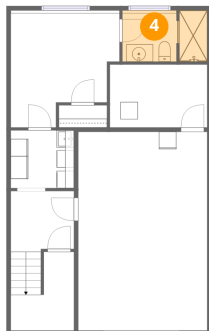
3 Floor 1 - Garage



Dimensions: 14'10" x 22'10"
Area: 340 sq. ft
Counted as living area: No

Heated: No
Finished: No
Enclosed: Yes
Contiguous: Yes
Permitted: Yes
Wet space: No
Addition: No
Conversion: No

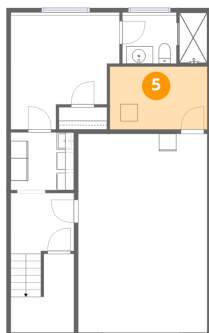
4 Floor 1 - Bath



Dimensions: 9'9" x 5'11"
Area: 57 sq. ft
Counted as living area: Yes

Heated: Yes
Finished: Yes
Enclosed: Yes
Contiguous: Yes
Permitted: Yes
Wet space: Yes
Addition: No
Conversion: No

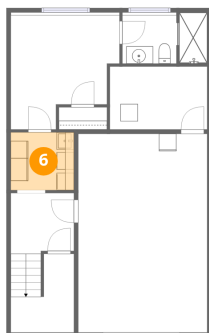
5 Floor 1 - Electrical Room



Dimensions: 11'3" x 7'3"
Area: 81 sq. ft
Counted as living area: No

Heated: No
Finished: No
Enclosed: Yes
Contiguous: Yes
Permitted: Yes
Wet space: No
Addition: No
Conversion: No

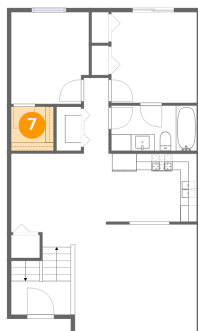
6 Floor 1 - Laundry



Dimensions: 7'3" x 6'8"
Area: 48 sq. ft
Counted as living area: Yes

Heated: Yes
Finished: Yes
Enclosed: Yes
Contiguous: Yes
Permitted: Yes
Wet space: No
Addition: No
Conversion: No

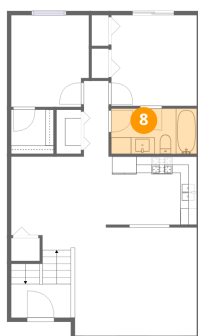
7 Floor 2 - W.I.C.



Dimensions: 5'2" x 5'5"
Area: 28 sq. ft
Counted as living area: Yes

Heated: Yes
Finished: Yes
Enclosed: Yes
Contiguous: Yes
Permitted: Yes
Wet space: No
Addition: No
Conversion: No

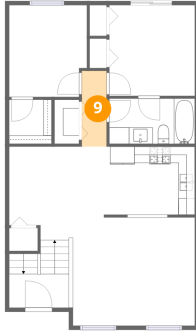
8 Floor 2 - Bath



Dimensions: 10'5" x 5'6"
Area: 57 sq. ft
Counted as living area: Yes

Heated: Yes
Finished: Yes
Enclosed: Yes
Contiguous: Yes
Permitted: Yes
Wet space: Yes
Addition: No
Conversion: No

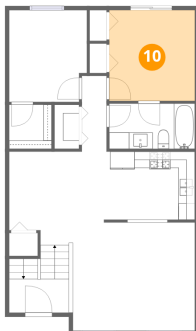
9 Floor 2 - Hall



Dimensions: 3'0" x 9'3"
Area: 28 sq. ft
Counted as living area: Yes

Heated: Yes
Finished: Yes
Enclosed: Yes
Contiguous: Yes
Permitted: Yes
Wet space: No
Addition: No
Conversion: No

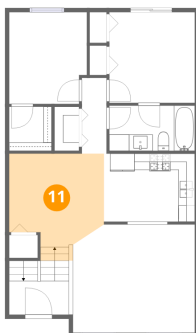
10 Floor 2 - Primary Bedroom



Dimensions: 10'5" x 11'1"
Area: 115 sq. ft
Counted as living area: Yes

Heated: Yes
Finished: Yes
Enclosed: Yes
Contiguous: Yes
Permitted: Yes
Wet space: No
Addition: No
Conversion: No

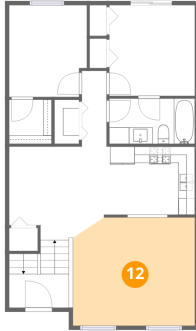
11 Floor 2 - Dining Area



Dimensions: 11'7" x 11'5"
Area: 125 sq. ft
Counted as living area: Yes

Heated: Yes
Finished: Yes
Enclosed: Yes
Contiguous: Yes
Permitted: Yes
Wet space: No
Addition: No
Conversion: No

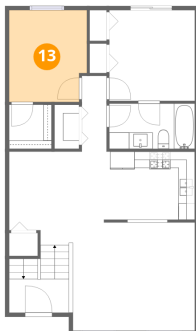
12 Floor 2 - Living Room



Dimensions: 14'10" x 13'2"
Area: 191 sq. ft
Counted as living area: Yes

Heated: Yes
Finished: Yes
Enclosed: Yes
Contiguous: Yes
Permitted: Yes
Wet space: No
Addition: No
Conversion: No

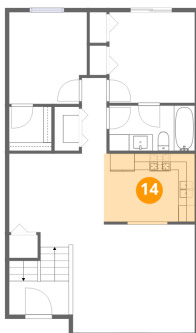
13 Floor 2 - Bedroom



Dimensions: 9'5" x 11'2"
Area: 103 sq. ft
Counted as living area: Yes

Heated: Yes
Finished: Yes
Enclosed: Yes
Contiguous: Yes
Permitted: Yes
Wet space: No
Addition: No
Conversion: No

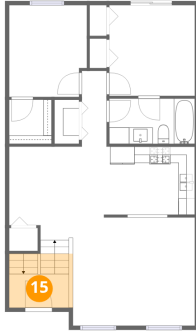
14 Floor 2 - Kitchen



Dimensions: 11'1" x 8'3"
Area: 93 sq. ft
Counted as living area: Yes

Heated: Yes
Finished: Yes
Enclosed: Yes
Contiguous: Yes
Permitted: Yes
Wet space: No
Addition: No
Conversion: No

15 Floor 2 - Foyer



Dimensions: 7'3" x 4'1"
Area: 51 sq. ft
Counted as living area: Yes

Heated: Yes
Finished: Yes
Enclosed: Yes
Contiguous: Yes
Permitted: Yes
Wet space: No
Addition: No
Conversion: No