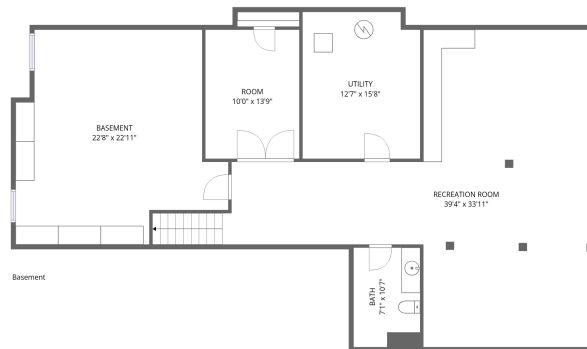


Home data report

34721 Pembroke Ave, Livonia, MI, US



1st floor



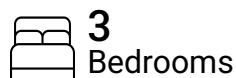
Basement

Total Area: 2817 sq. ft

Basement: 1077 sq. ft, 1st Floor: 1740 sq. ft

Excluded: Basement 434 sq. ft, Utility 193 sq. ft, Garage 443 sq. ft, Walls: 233 sq. ft

Property summary

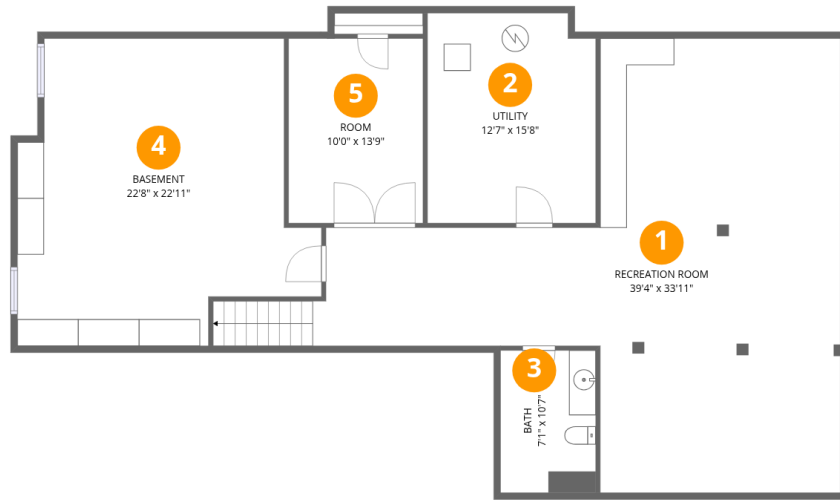


Home data report

34721 Pembroke Ave, Livonia, MI, US

 **2**
Half baths

 **1**
Garages



Room dimensions

Floor 1 Below grade

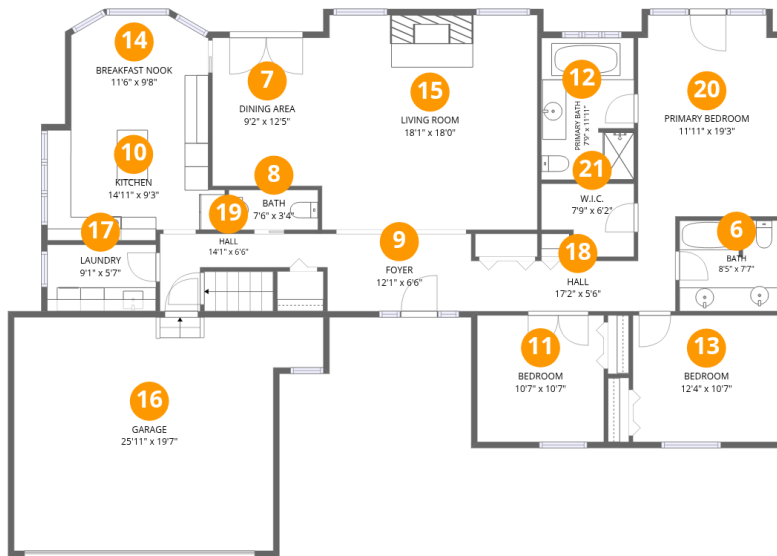
Total: 1077 sqft

Excluded: 627 sqft

#		Dimensions	sqft	Counted as living area
1	Recreation Room	39'4" x 33'11"	817 sq. ft	Yes
2	Utility	12'7" x 15'8"	193 sq. ft	No
3	Bath	7'1" x 10'7"	76 sq. ft	Yes
4	Basement	22'8" x 22'11"	434 sq. ft	No
5	Room	10'0" x 13'9"	138 sq. ft	Yes

Home data report

34721 Pembroke Ave, Livonia, MI, US



Room dimensions

Floor 2

Total: 1740 sqft

Excluded: 443 sqft

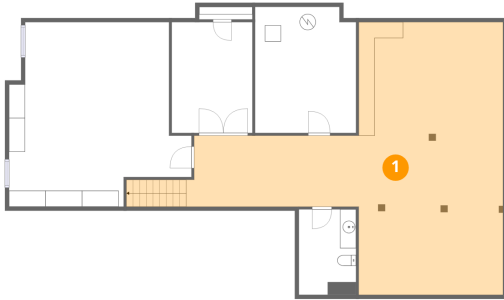
#		Dimensions	sqft	Counted as living area
6	Bath	8'5" x 7'7"	63 sq. ft	Yes
7	Dining Area	9'2" x 12'5"	114 sq. ft	Yes
8	Bath	7'6" x 3'4"	25 sq. ft	Yes
9	Foyer	12'1" x 6'6"	78 sq. ft	Yes
10	Kitchen	14'11" x 9'3"	126 sq. ft	Yes
11	Bedroom	10'7" x 10'7"	113 sq. ft	Yes
12	Primary Bath	7'9" x 11'11"	91 sq. ft	Yes
13	Bedroom	12'4" x 10'7"	131 sq. ft	Yes
14	Breakfast Nook	11'6" x 9'8"	105 sq. ft	Yes
15	Living Room	18'1" x 18'0"	324 sq. ft	Yes
16	Garage	25'11" x 19'7"	443 sq. ft	No

Home data report

34721 Pembroke Ave,Livonia,MI,US

#		Dimensions	sqft	Counted as living area
17	Laundry	9'1" x 5'7"	51 sq. ft	Yes
18	Hall	17'2" x 5'6"	77 sq. ft	Yes
19	Hall	14'1" x 6'6"	52 sq. ft	Yes
20	Primary Bedroom	11'11" x 19'3"	205 sq. ft	Yes
21	W.I.C.	7'9" x 6'2"	42 sq. ft	Yes

1 Floor 1 - Recreation Room



Dimensions: 39'4" x 33'11"
Area: 817 sq. ft
Counted as living area: Yes

Heated: Yes
Finished: Yes
Enclosed: Yes
Contiguous: Yes
Permitted: Yes
Wet space: No
Addition: No
Conversion: No

2 Floor 1 - Utility



Dimensions: 12'7" x 15'8"
Area: 193 sq. ft
Counted as living area: No

Heated: Yes
Finished: No
Enclosed: Yes
Contiguous: Yes
Permitted: Yes
Wet space: No
Addition: No
Conversion: No

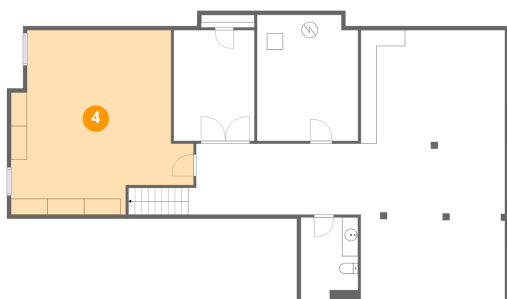
3 Floor 1 - Bath



Dimensions: 7'1" x 10'7"
Area: 76 sq. ft
Counted as living area: Yes

Heated: Yes
Finished: Yes
Enclosed: Yes
Contiguous: Yes
Permitted: Yes
Wet space: Yes
Addition: No
Conversion: No

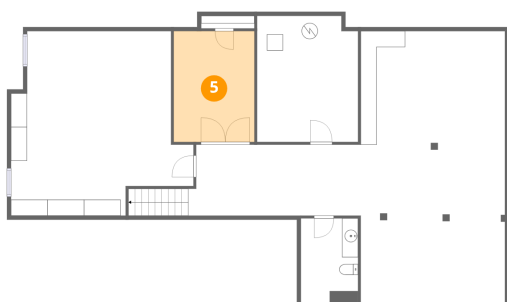
4 Floor 1 - Basement



Dimensions: 22'8" x 22'11"
Area: 434 sq. ft
Counted as living area: No

Heated: Yes
Finished: No
Enclosed: Yes
Contiguous: Yes
Permitted: Yes
Wet space: No
Addition: No
Conversion: No

5 Floor 1 - Room



Dimensions: 10'0" x 13'9"
Area: 138 sq. ft
Counted as living area: Yes

Heated: Yes
Finished: Yes
Enclosed: Yes
Contiguous: Yes
Permitted: Yes
Wet space: No
Addition: No
Conversion: No

6 Floor 2 - Bath



Dimensions: 8'5" x 7'7"
Area: 63 sq. ft
Counted as living area: Yes

Heated: Yes
Finished: Yes
Enclosed: Yes
Contiguous: Yes
Permitted: Yes
Wet space: Yes
Addition: No
Conversion: No

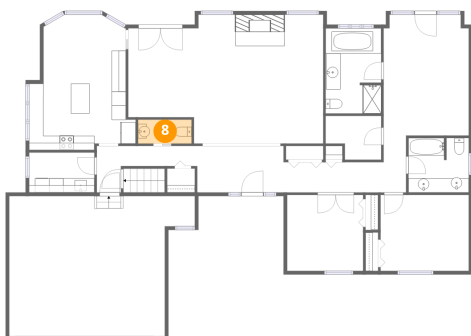
7 Floor 2 - Dining Area



Dimensions: 9'2" x 12'5"
Area: 114 sq. ft
Counted as living area: Yes

Heated: Yes
Finished: Yes
Enclosed: Yes
Contiguous: Yes
Permitted: Yes
Wet space: No
Addition: No
Conversion: No

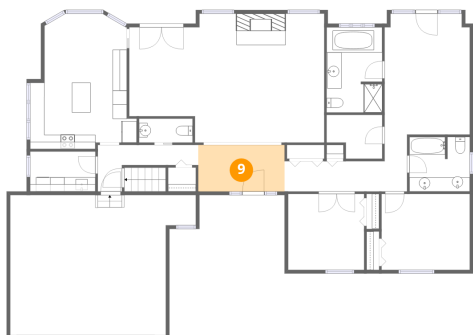
8 Floor 2 - Bath



Dimensions: 7'6" x 3'4"
Area: 25 sq. ft
Counted as living area: Yes

Heated: Yes
Finished: Yes
Enclosed: Yes
Contiguous: Yes
Permitted: Yes
Wet space: Yes
Addition: No
Conversion: No

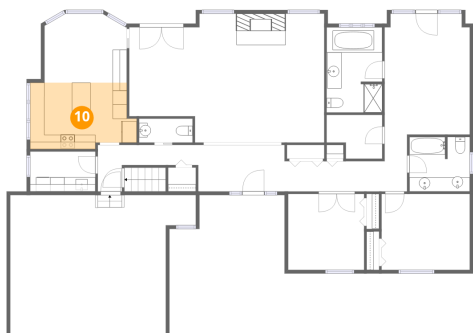
9 Floor 2 - Foyer



Dimensions: 12'1" x 6'6"
Area: 78 sq. ft
Counted as living area: Yes

Heated: Yes
Finished: Yes
Enclosed: Yes
Contiguous: Yes
Permitted: Yes
Wet space: No
Addition: No
Conversion: No

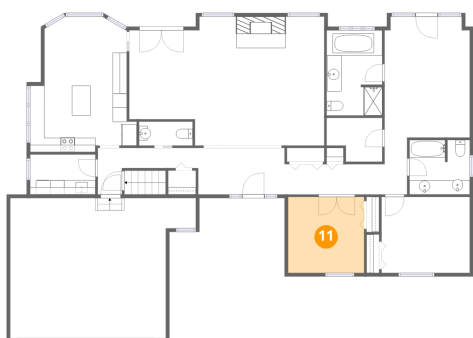
10 Floor 2 - Kitchen



Dimensions: 14'11" x 9'3"
Area: 126 sq. ft
Counted as living area: Yes

Heated: Yes
Finished: Yes
Enclosed: Yes
Contiguous: Yes
Permitted: Yes
Wet space: No
Addition: No
Conversion: No

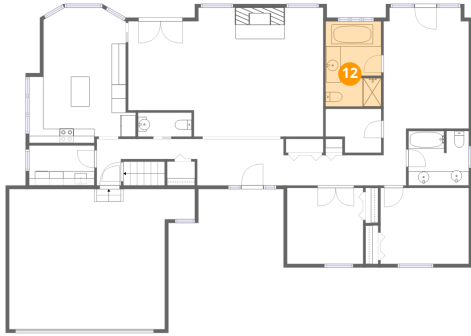
11 Floor 2 - Bedroom



Dimensions: 10'7" x 10'7"
Area: 113 sq. ft
Counted as living area: Yes

Heated: Yes
Finished: Yes
Enclosed: Yes
Contiguous: Yes
Permitted: Yes
Wet space: No
Addition: No
Conversion: No

12 Floor 2 - Primary Bath



Dimensions: 7'9" x 11'11"
Area: 91 sq. ft
Counted as living area: Yes

Heated: Yes
Finished: Yes
Enclosed: Yes
Contiguous: Yes
Permitted: Yes
Wet space: Yes
Addition: No
Conversion: No

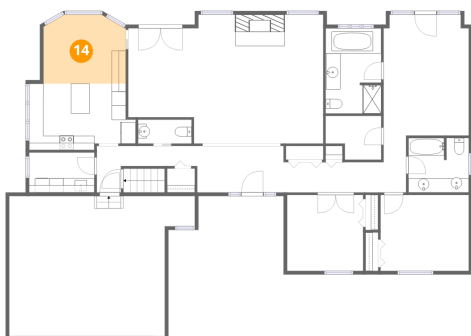
13 Floor 2 - Bedroom



Dimensions: 12'4" x 10'7"
Area: 131 sq. ft
Counted as living area: Yes

Heated: Yes
Finished: Yes
Enclosed: Yes
Contiguous: Yes
Permitted: Yes
Wet space: No
Addition: No
Conversion: No

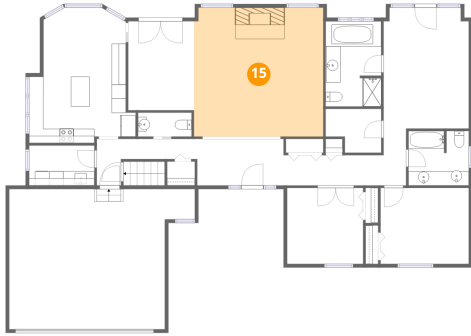
14 Floor 2 - Breakfast Nook



Dimensions: 11'6" x 9'8"
Area: 105 sq. ft
Counted as living area: Yes

Heated: Yes
Finished: Yes
Enclosed: Yes
Contiguous: Yes
Permitted: Yes
Wet space: No
Addition: No
Conversion: No

15 Floor 2 - Living Room



Dimensions: 18'1" x 18'0"
Area: 324 sq. ft
Counted as living area: Yes

Heated: Yes
Finished: Yes
Enclosed: Yes
Contiguous: Yes
Permitted: Yes
Wet space: No
Addition: No
Conversion: No

16 Floor 2 - Garage



Dimensions: 25'11" x 19'7"
Area: 443 sq. ft
Counted as living area: No

Heated: No
Finished: No
Enclosed: Yes
Contiguous: Yes
Permitted: Yes
Wet space: No
Addition: No
Conversion: No

17 Floor 2 - Laundry



Dimensions: 9'1" x 5'7"
Area: 51 sq. ft
Counted as living area: Yes

Heated: Yes
Finished: Yes
Enclosed: Yes
Contiguous: Yes
Permitted: Yes
Wet space: No
Addition: No
Conversion: No

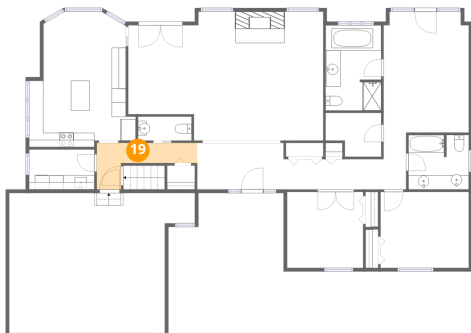
18 Floor 2 - Hall



Dimensions: 17'2" x 5'6"
Area: 77 sq. ft
Counted as living area: Yes

Heated: Yes
Finished: Yes
Enclosed: Yes
Contiguous: Yes
Permitted: Yes
Wet space: No
Addition: No
Conversion: No

19 Floor 2 - Hall



Dimensions: 14'1" x 6'6"
Area: 52 sq. ft
Counted as living area: Yes

Heated: Yes
Finished: Yes
Enclosed: Yes
Contiguous: Yes
Permitted: Yes
Wet space: No
Addition: No
Conversion: No

20 Floor 2 - Primary Bedroom



Dimensions: 11'11" x 19'3"
Area: 205 sq. ft
Counted as living area: Yes

Heated: Yes
Finished: Yes
Enclosed: Yes
Contiguous: Yes
Permitted: Yes
Wet space: No
Addition: No
Conversion: No

21 Floor 2 - W.I.C.



Dimensions: 7'9" x 6'2"
Area: 42 sq. ft
Counted as living area: Yes

Heated: Yes
Finished: Yes
Enclosed: Yes
Contiguous: Yes
Permitted: Yes
Wet space: No
Addition: No
Conversion: No