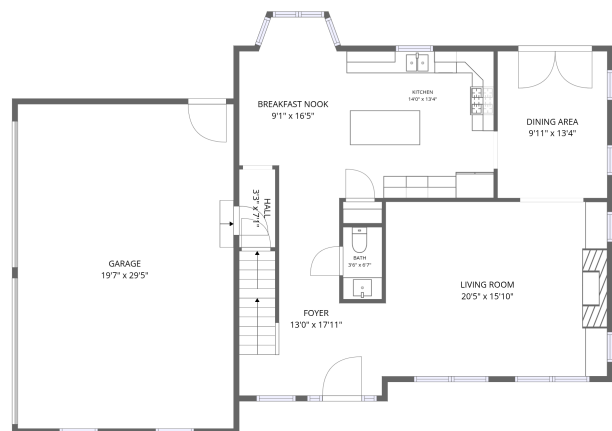
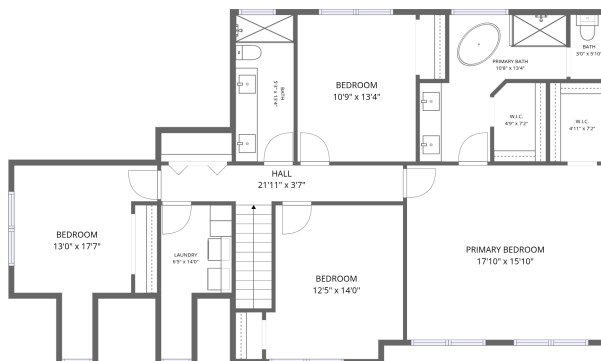


Home data report

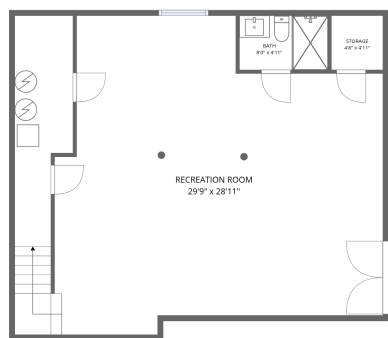
4208 Campbell View Lane, Cave Spring, Roanoke, Roanoke County, Virginia, United States, 24018



ENTRY LEVEL



UPPER LEVEL



LOWER LEVEL

Total Area: 3224 sq. ft

Basement: 907 sq. ft, 1st Floor: 1025 sq. ft, 2nd Floor: 1292 sq. ft

Excluded: Storage 23 sq. ft, Garage 576 sq. ft, Walls: 266 sq. ft

Property summary



Home data report

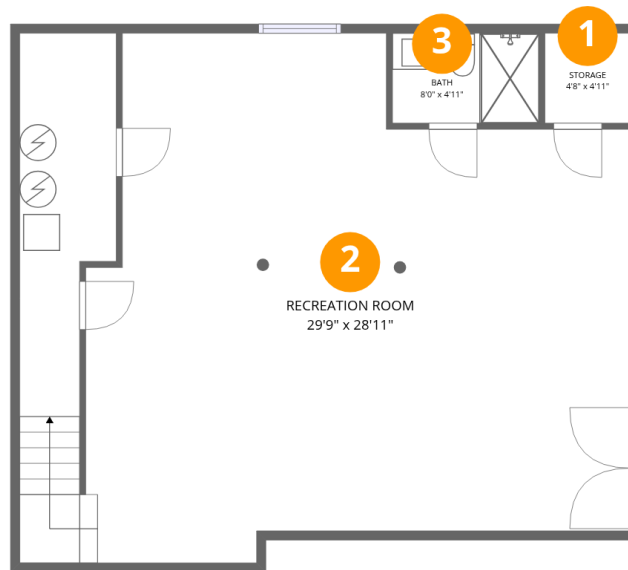
**4208 Campbell View Lane, Cave Spring, Roanoke, Roanoke
County, Virginia, United States, 24018**

 **1**
Half baths

 **1**
Garages

Home data report

4208 Campbell View Lane, Cave Spring, Roanoke, Roanoke County, Virginia, United States, 24018



Room dimensions

Floor 1 Below grade

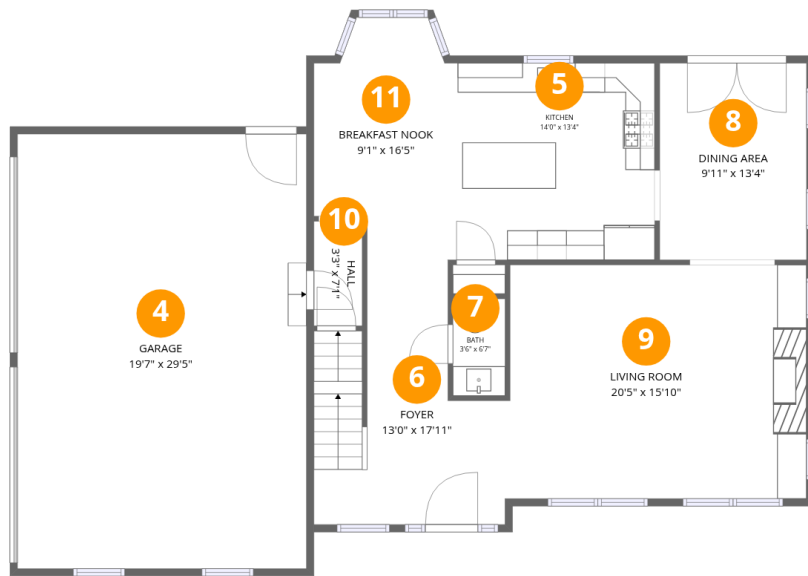
Total:907sqft

Excluded: 23sqft

#		Dimensions	sqft	Counted as living area
1	Storage	4'8" x 4'11"	23 sq. ft	No
2	Recreation Room	29'9" x 28'11"	861 sq. ft	Yes
3	Bath	8'0" x 4'11"	39 sq. ft	Yes

Home data report

4208 Campbell View Lane, Cave Spring, Roanoke, Roanoke County, Virginia, United States, 24018



Room dimensions

Floor 2

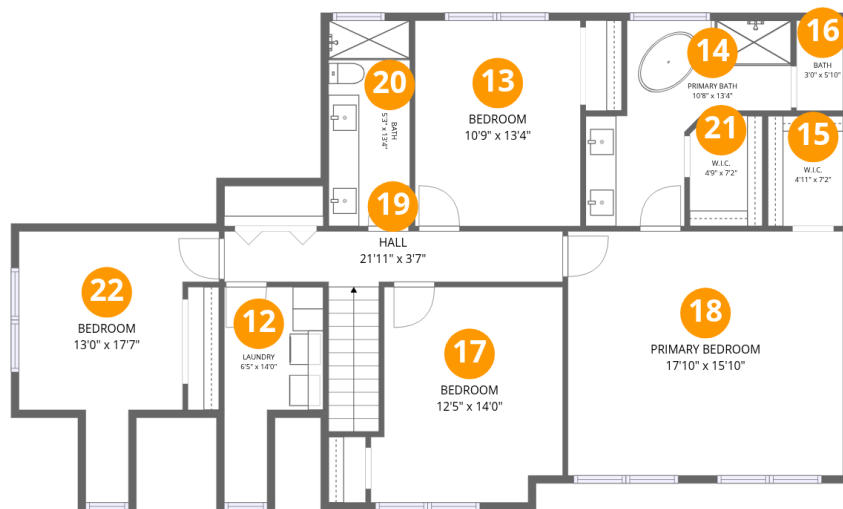
Total:1025sqft

Excluded: 576sqft

#		Dimensions	sqft	Counted as living area
4	Garage	19'7" x 29'5"	575 sq. ft	No
5	Kitchen	14'0" x 13'4"	187 sq. ft	Yes
6	Foyer	13'0" x 17'11"	232 sq. ft	Yes
7	Bath	3'6" x 6'7"	23 sq. ft	Yes
8	Dining Area	9'11" x 13'4"	133 sq. ft	Yes
9	Living Room	20'5" x 15'10"	323 sq. ft	Yes
10	Hall	3'3" x 7'1"	23 sq. ft	Yes
11	Breakfast Nook	9'1" x 16'5"	149 sq. ft	Yes

Home data report

4208 Campbell View Lane, Cave Spring, Roanoke, Roanoke County, Virginia, United States, 24018



Room dimensions

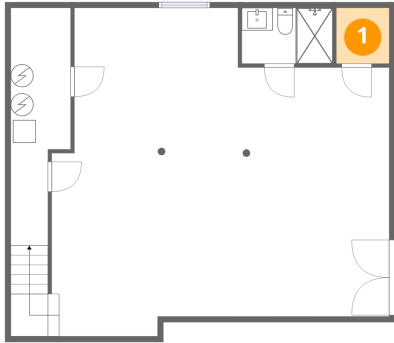
Floor 3

Total:1292sqft Excluded: 0sqft

#		Dimensions	sqft	Counted as living area
12	Laundry	6'5" x 14'0"	90 sq. ft	Yes
13	Bedroom	10'9" x 13'4"	143 sq. ft	Yes
14	Primary Bath	10'8" x 13'4"	142 sq. ft	Yes
15	W.I.C.	4'11" x 7'2"	35 sq. ft	Yes
16	Bath	3'0" x 5'10"	18 sq. ft	Yes
17	Bedroom	12'5" x 14'0"	174 sq. ft	Yes
18	Primary Bedroom	17'10" x 15'10"	282 sq. ft	Yes
19	Hall	21'11" x 3'7"	79 sq. ft	Yes
20	Bath	5'3" x 13'4"	70 sq. ft	Yes
21	W.I.C.	4'9" x 7'2"	34 sq. ft	Yes
22	Bedroom	13'0" x 17'7"	228 sq. ft	Yes

4208 Campbell View Lane, Cave Spring, Roanoke, Roanoke County, Virginia, United States, 24018

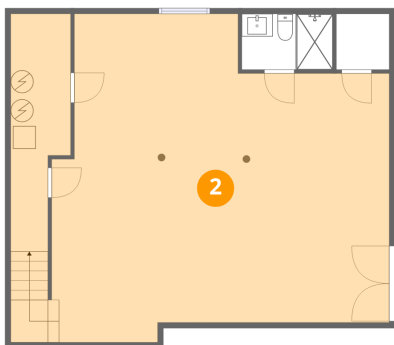
1 Floor 1 - Storage



Dimensions: 4'8" x 4'11"
Area: 23 sq. ft
Counted as living area: No

Heated: No
Finished: No
Enclosed: No
Contiguous: Yes
Permitted: Yes
Wet space: No
Addition: No
Conversion: No

2 Floor 1 - Recreation Room

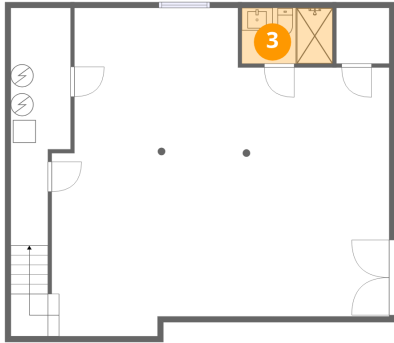


Dimensions: 29'9" x 28'11"
Area: 861 sq. ft
Counted as living area: Yes

Heated: Yes
Finished: Yes
Enclosed: Yes
Contiguous: Yes
Permitted: Yes
Wet space: No
Addition: No
Conversion: No

4208 Campbell View Lane, Cave Spring, Roanoke, Roanoke County, Virginia, United States, 24018

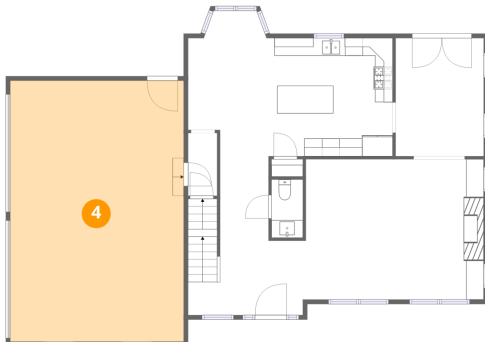
3 Floor 1 - Bath



Dimensions: 8'0" x 4'11"
Area: 39 sq. ft
Counted as living area: Yes

Heated: Yes
Finished: Yes
Enclosed: Yes
Contiguous: Yes
Permitted: Yes
Wet space: Yes
Addition: No
Conversion: No

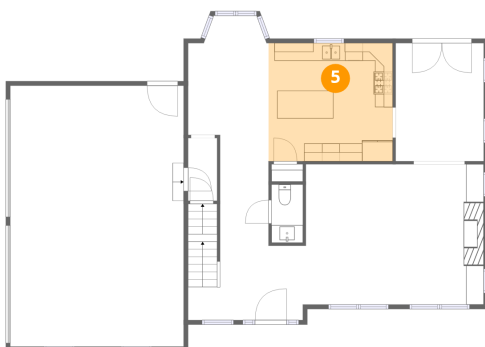
4 Floor 2 - Garage



Dimensions: 19'7" x 29'5"
Area: 575 sq. ft
Counted as living area: No

Heated: No
Finished: No
Enclosed: Yes
Contiguous: Yes
Permitted: Yes
Wet space: No
Addition: No
Conversion: No

5 Floor 2 - Kitchen

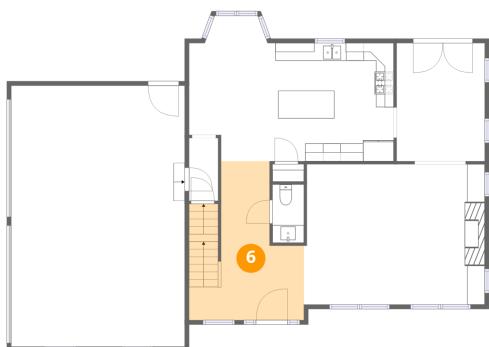


Dimensions: 14'0" x 13'4"
Area: 187 sq. ft
Counted as living area: Yes

Heated: Yes
Finished: Yes
Enclosed: Yes
Contiguous: Yes
Permitted: Yes
Wet space: No
Addition: No
Conversion: No

4208 Campbell View Lane, Cave Spring, Roanoke, Roanoke County, Virginia, United States, 24018

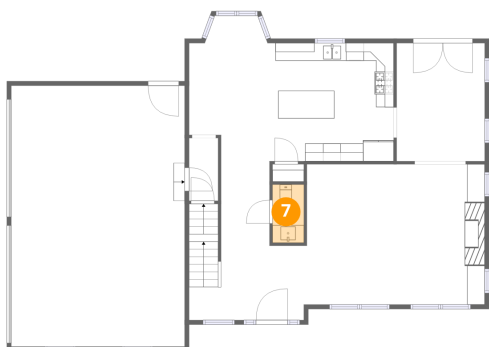
6 Floor 2 - Foyer



Dimensions: 13'0" x 17'11"
Area: 232 sq. ft
Counted as living area: Yes

Heated: Yes
Finished: Yes
Enclosed: Yes
Contiguous: Yes
Permitted: Yes
Wet space: No
Addition: No
Conversion: No

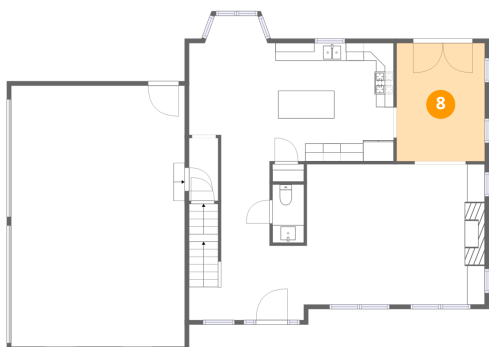
7 Floor 2 - Bath



Dimensions: 3'6" x 6'7"
Area: 23 sq. ft
Counted as living area: Yes

Heated: Yes
Finished: Yes
Enclosed: Yes
Contiguous: Yes
Permitted: Yes
Wet space: Yes
Addition: No
Conversion: No

8 Floor 2 - Dining Area

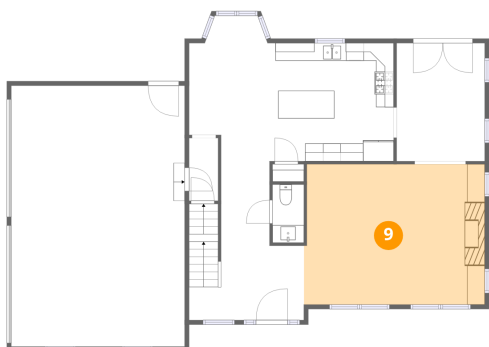


Dimensions: 9'11" x 13'4"
Area: 133 sq. ft
Counted as living area: Yes

Heated: Yes
Finished: Yes
Enclosed: Yes
Contiguous: Yes
Permitted: Yes
Wet space: No
Addition: No
Conversion: No

4208 Campbell View Lane, Cave Spring, Roanoke, Roanoke County, Virginia, United States, 24018

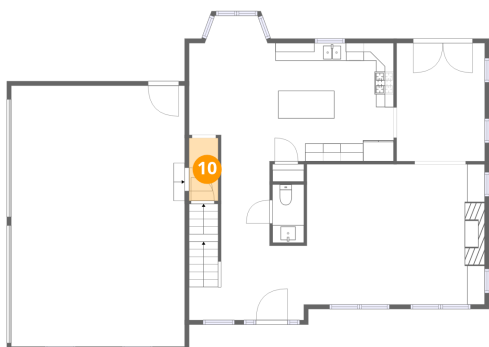
9 Floor 2 - Living Room



Dimensions: 20'5" x 15'10"
Area: 323 sq. ft
Counted as living area: Yes

Heated: Yes
Finished: Yes
Enclosed: Yes
Contiguous: Yes
Permitted: Yes
Wet space: No
Addition: No
Conversion: No

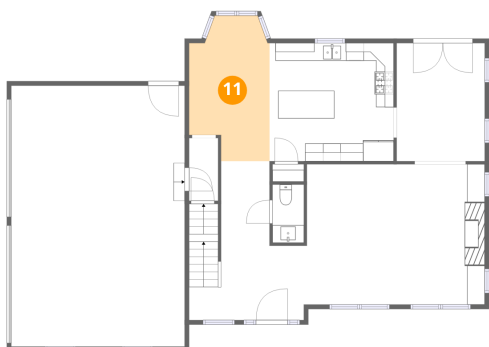
10 Floor 2 - Hall



Dimensions: 3'3" x 7'1"
Area: 23 sq. ft
Counted as living area: Yes

Heated: Yes
Finished: Yes
Enclosed: Yes
Contiguous: Yes
Permitted: Yes
Wet space: No
Addition: No
Conversion: No

11 Floor 2 - Breakfast Nook

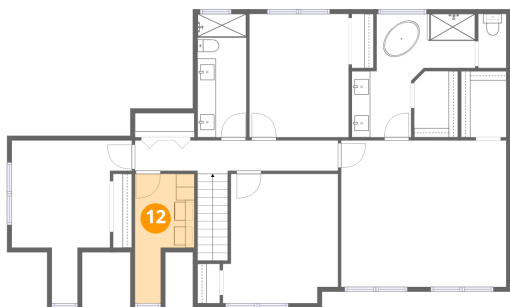


Dimensions: 9'1" x 16'5"
Area: 149 sq. ft
Counted as living area: Yes

Heated: Yes
Finished: Yes
Enclosed: Yes
Contiguous: Yes
Permitted: Yes
Wet space: No
Addition: No
Conversion: No

4208 Campbell View Lane, Cave Spring, Roanoke, Roanoke County, Virginia, United States, 24018

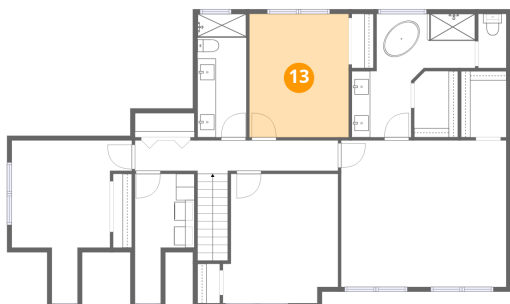
12 Floor 3 - Laundry



Dimensions: 6'5" x 14'0"
Area: 90 sq. ft
Counted as living area: Yes

Heated: Yes
Finished: Yes
Enclosed: Yes
Contiguous: Yes
Permitted: Yes
Wet space: No
Addition: No
Conversion: No

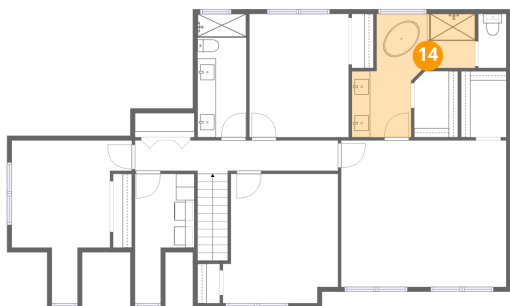
13 Floor 3 - Bedroom



Dimensions: 10'9" x 13'4"
Area: 143 sq. ft
Counted as living area: Yes

Heated: Yes
Finished: Yes
Enclosed: Yes
Contiguous: Yes
Permitted: Yes
Wet space: No
Addition: No
Conversion: No

14 Floor 3 - Primary Bath

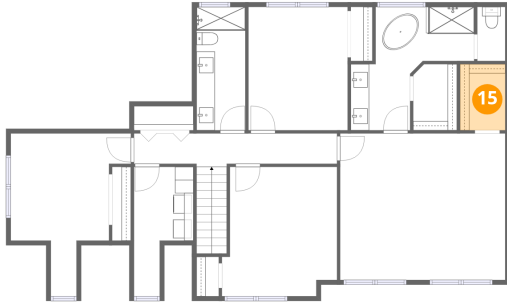


Dimensions: 10'8" x 13'4"
Area: 142 sq. ft
Counted as living area: Yes

Heated: Yes
Finished: Yes
Enclosed: Yes
Contiguous: Yes
Permitted: Yes
Wet space: Yes
Addition: No
Conversion: No

4208 Campbell View Lane, Cave Spring, Roanoke, Roanoke County, Virginia, United States, 24018

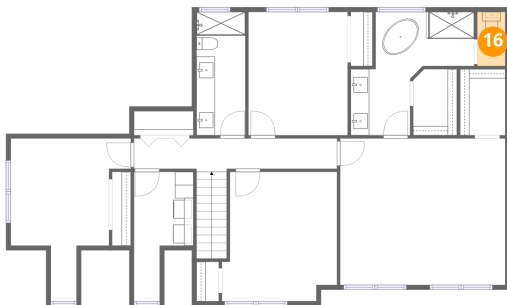
15 Floor 3 - W.I.C.



Dimensions: 4'11" x 7'2"
Area: 35 sq. ft
Counted as living area: Yes

Heated: Yes
Finished: Yes
Enclosed: Yes
Contiguous: Yes
Permitted: Yes
Wet space: No
Addition: No
Conversion: No

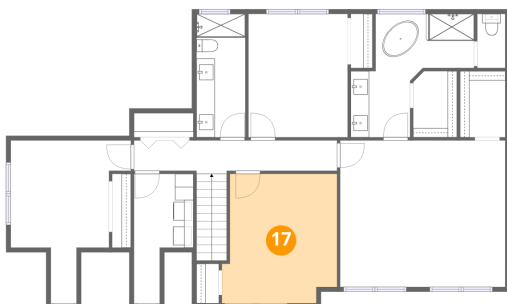
16 Floor 3 - Bath



Dimensions: 3'0" x 5'10"
Area: 18 sq. ft
Counted as living area: Yes

Heated: Yes
Finished: Yes
Enclosed: Yes
Contiguous: Yes
Permitted: Yes
Wet space: Yes
Addition: No
Conversion: No

17 Floor 3 - Bedroom

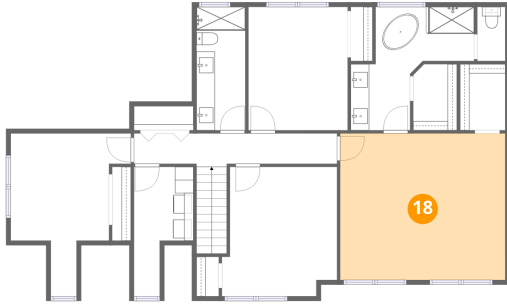


Dimensions: 12'5" x 14'0"
Area: 174 sq. ft
Counted as living area: Yes

Heated: Yes
Finished: Yes
Enclosed: Yes
Contiguous: Yes
Permitted: Yes
Wet space: No
Addition: No
Conversion: No

4208 Campbell View Lane, Cave Spring, Roanoke, Roanoke County, Virginia, United States, 24018

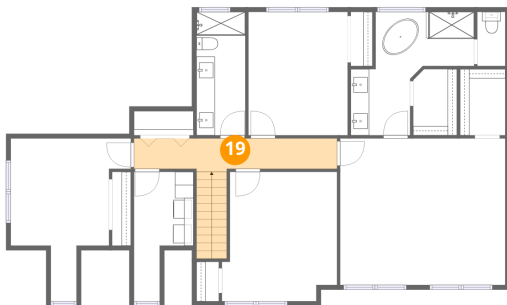
18 Floor 3 - Primary Bedroom



Dimensions: 17'10" x 15'10"
Area: 282 sq. ft
Counted as living area: Yes

Heated: Yes
Finished: Yes
Enclosed: Yes
Contiguous: Yes
Permitted: Yes
Wet space: No
Addition: No
Conversion: No

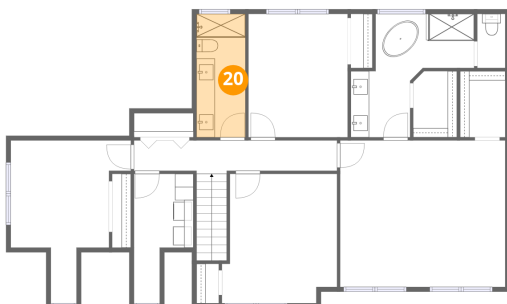
19 Floor 3 - Hall



Dimensions: 21'11" x 3'7"
Area: 79 sq. ft
Counted as living area: Yes

Heated: Yes
Finished: Yes
Enclosed: Yes
Contiguous: Yes
Permitted: Yes
Wet space: No
Addition: No
Conversion: No

20 Floor 3 - Bath

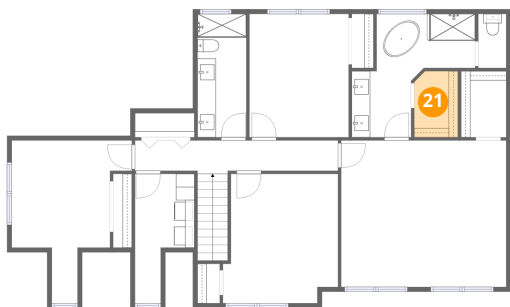


Dimensions: 5'3" x 13'4"
Area: 70 sq. ft
Counted as living area: Yes

Heated: Yes
Finished: Yes
Enclosed: Yes
Contiguous: Yes
Permitted: Yes
Wet space: Yes
Addition: No
Conversion: No

4208 Campbell View Lane, Cave Spring, Roanoke, Roanoke County, Virginia, United States, 24018

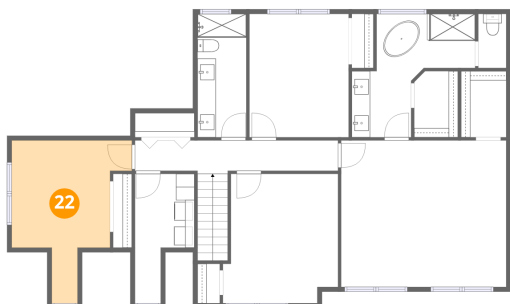
21 Floor 3 - W.I.C.



Dimensions: 4'9" x 7'2"
Area: 34 sq. ft
Counted as living area: Yes

Heated: Yes
Finished: Yes
Enclosed: Yes
Contiguous: Yes
Permitted: Yes
Wet space: No
Addition: No
Conversion: No

22 Floor 3 - Bedroom



Dimensions: 13'0" x 17'7"
Area: 228 sq. ft
Counted as living area: Yes

Heated: Yes
Finished: Yes
Enclosed: Yes
Contiguous: Yes
Permitted: Yes
Wet space: No
Addition: No
Conversion: No