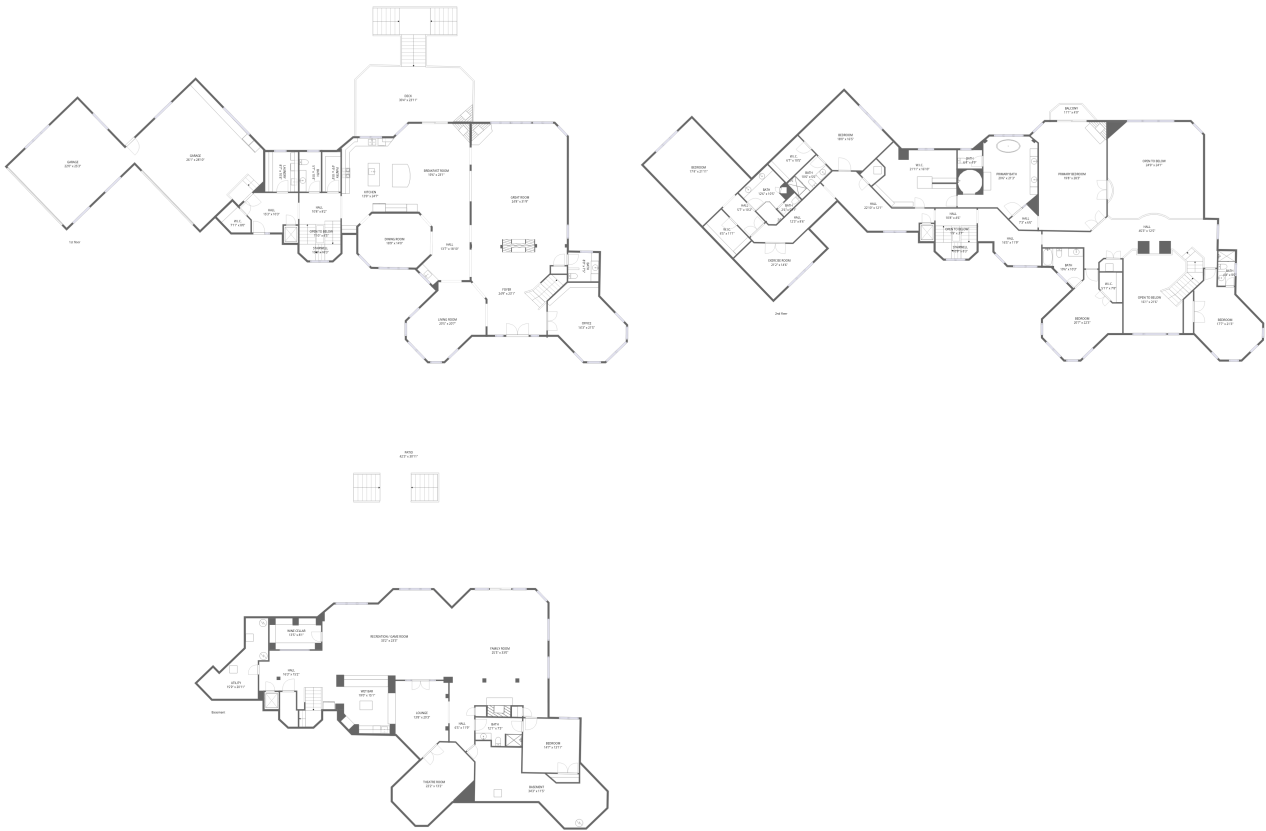


Home data report

414 Dana Ln, Barrington Hills, IL, US



## Total Area: 10974 sq. ft

Basement: 2962 sq. ft, 1st Floor: 3611 sq. ft, 2nd Floor: 4401 sq. ft

Excluded: Basement 393 sq. ft, Wine cellar 112 sq. ft, Utility 190 sq. ft, Patio 1206 sq. ft, Stairwell 181 sq. ft, Garage 1338 sq. ft, Deck 512 sq. ft, Balcony 37 sq. ft, Open to below 892 sq. ft, Walls: 644 sq. ft

## Property summary



**3**  
Floors



**6**  
Bedrooms



**6**  
Bathrooms

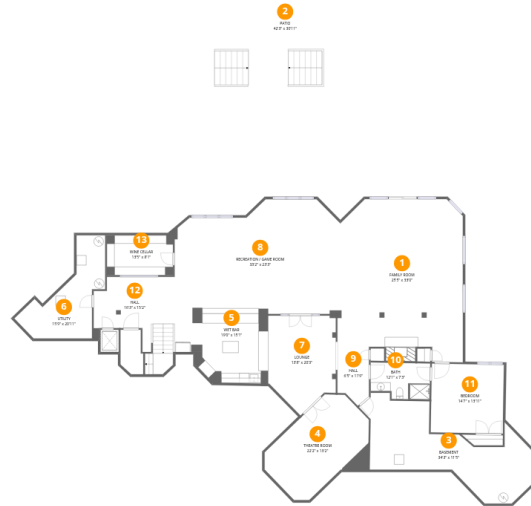
Home data report

# 414 Dana Ln, Barrington Hills, IL, US

 **2**  
Half baths

 **2**  
Garages

# 414 Dana Ln, Barrington Hills, IL, US



## Room dimensions

Floor 1 Below grade

Total: 2962 sqft

Excluded: 1901 sqft

#		Dimensions	sqft	Counted as living area
1	Family Room	25'5" x 33'0"	839 sq. ft	Yes
2	Patio	42'3" x 30'11"	1304 sq. ft	No
3	Basement	34'3" x 11'5"	392 sq. ft	No
4	Theatre Room	22'2" x 13'2"	291 sq. ft	Yes
5	Wet Bar	19'0" x 15'1"	287 sq. ft	Yes
6	Utility	15'9" x 20'11"	329 sq. ft	No
7	Lounge	13'8" x 20'3"	277 sq. ft	Yes
8	Recreation / Game Room	33'2" x 23'3"	772 sq. ft	Yes
9	Hall	6'5" x 11'9"	75 sq. ft	Yes
10	Bath	12'1" x 7'3"	88 sq. ft	Yes

Home data report

**414 Dana Ln,Barrington Hills,IL,US**

#		Dimensions	sqft	Counted as living area
11	Bedroom	14'7" x 13'11"	203 sq. ft	Yes
12	Hall	16'3" x 15'2"	248 sq. ft	Yes
13	Wine Cellar	13'5" x 8'1"	109 sq. ft	No



## Room dimensions

Floor 2

Total: 3611 sqft

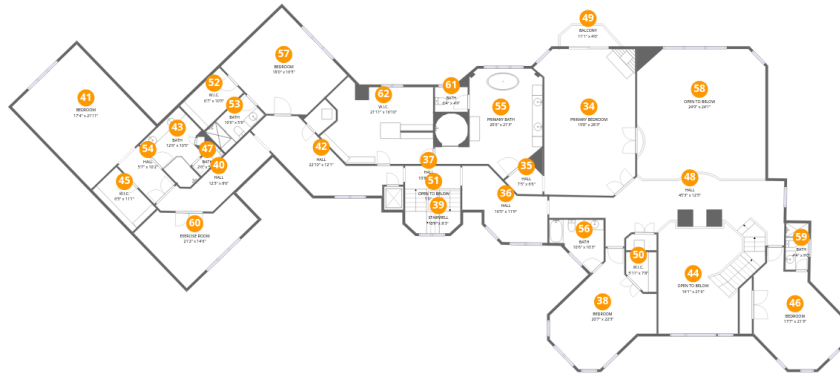
Excluded: 1947 sqft

#		Dimensions	sqft	Counted as living area
14	Stairwell	10'8" x 10'3"	109 sq. ft	No
15	Bath	8'0" x 7'5"	59 sq. ft	Yes
16	Garage	26'1" x 28'10"	752 sq. ft	No
17	Breakfast Room	19'6" x 23'1"	449 sq. ft	Yes
18	Hall	15'3" x 10'3"	156 sq. ft	Yes
19	Laundry	8'7" x 10'4"	89 sq. ft	Yes
20	Great Room	24'8" x 31'9"	783 sq. ft	Yes
21	Hall	13'7" x 18'10"	256 sq. ft	Yes
22	Garage	22'0" x 25'3"	556 sq. ft	No
23	Deck	30'4" x 23'11"	725 sq. ft	No
24	Pantry	4'9" x 10'4"	49 sq. ft	Yes

Home data report

414 Dana Ln, Barrington Hills, IL, US

#		Dimensions	sqft	Counted as living area
25	Foyer	24'9" x 23'1"	571 sq. ft	Yes
26	Living Room	20'5" x 20'7"	421 sq. ft	Yes
27	Office	14'3" x 21'5"	305 sq. ft	Yes
28	Open To Below	1'10" x 4'5"	8 sq. ft	Yes
29	W.I.C.	7'11" x 8'0"	63 sq. ft	Yes
30	Dining Room	18'9" x 14'0"	263 sq. ft	Yes
31	Kitchen	13'9" x 24'7"	338 sq. ft	Yes
32	Hall	10'8" x 8'2"	87 sq. ft	Yes
33	Bath	5'7" x 10'4"	58 sq. ft	Yes



## Room dimensions

Floor 3

Total: 4401 sqft

Excluded: 1013 sqft

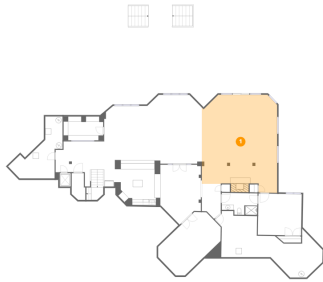
#		Dimensions	sqft	Counted as living area
34	Primary Bedroom	19'8" x 28'3"	556 sq. ft	Yes
35	Hall	7'3" x 6'6"	47 sq. ft	Yes
36	Hall	16'5" x 11'9"	193 sq. ft	Yes
37	Hall	10'8" x 4'6"	48 sq. ft	Yes
38	Bedroom	20'7" x 22'3"	459 sq. ft	Yes
39	Stairwell	10'9" x 8'3"	89 sq. ft	No
40	Hall	12'3" x 8'6"	104 sq. ft	Yes
41	Bedroom	17'4" x 21'11"	380 sq. ft	Yes
42	Hall	22'10" x 12'1"	276 sq. ft	Yes
43	Bath	12'6" x 10'5"	130 sq. ft	Yes
44	Open To Below	16'1" x 21'6"	345 sq. ft	No

## Home data report

## 414 Dana Ln,Barrington Hills,IL,US

#		Dimensions	sqft	Counted as living area
45	W.I.C.	6'5" x 11'1"	71 sq. ft	Yes
46	Bedroom	17'7" x 21'3"	374 sq. ft	Yes
47	Bath	2'6" x 5'11"	15 sq. ft	Yes
48	Hall	45'3" x 12'5"	563 sq. ft	Yes
49	Balcony	11'1" x 4'0"	45 sq. ft	No
50	W.I.C.	5'11" x 7'8"	45 sq. ft	Yes
51	Open To Below	1'9" x 3'7"	6 sq. ft	Yes
52	W.I.C.	6'7" x 10'5"	69 sq. ft	Yes
53	Bath	10'6" x 5'6"	58 sq. ft	Yes
54	Hall	5'7" x 10'2"	57 sq. ft	Yes
55	Primary Bath	20'6" x 21'3"	437 sq. ft	Yes
56	Bath	10'6" x 10'3"	108 sq. ft	Yes
57	Bedroom	18'0" x 16'5"	296 sq. ft	Yes
58	Open To Below	24'9" x 24'1"	597 sq. ft	No
59	Bath	4'4" x 9'0"	39 sq. ft	Yes
60	Exercise Room	21'2" x 14'6"	307 sq. ft	Yes
61	Bath	6'4" x 4'9"	30 sq. ft	Yes
62	W.I.C.	21'11" x 16'10"	368 sq. ft	Yes

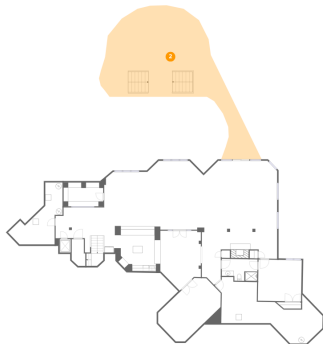
## 1 Floor 1 - Family Room



Dimensions: 25'5" x 33'0"  
Area: 839 sq. ft  
Counted as living area: Yes

Heated: Yes  
Finished: Yes  
Enclosed: Yes  
Contiguous: Yes  
Permitted: Yes  
Wet space: No  
Addition: No  
Conversion: No

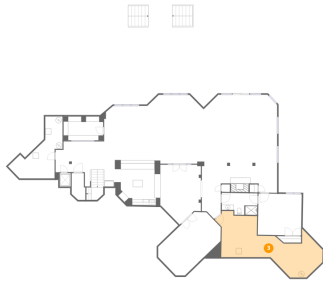
## 2 Floor 1 - Patio



Dimensions: 42'3" x 30'11"  
Area: 1304 sq. ft  
Counted as living area: No

Heated: No  
Finished: No  
Enclosed: No  
Contiguous: Yes  
Permitted: Yes  
Wet space: No  
Addition: No  
Conversion: No

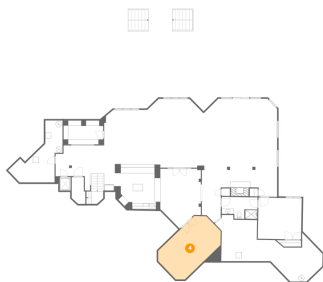
### 3 Floor 1 - Basement



Dimensions: 34'3" x 11'5"  
Area: 392 sq. ft  
Counted as living area: No

Heated: Yes  
Finished: No  
Enclosed: Yes  
Contiguous: Yes  
Permitted: Yes  
Wet space: No  
Addition: No  
Conversion: No

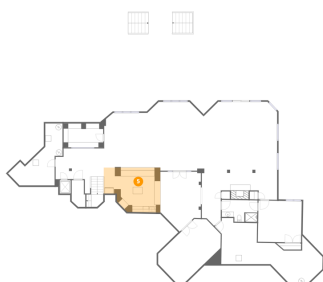
### 4 Floor 1 - Theatre Room



Dimensions: 22'2" x 13'2"  
Area: 291 sq. ft  
Counted as living area: Yes

Heated: Yes  
Finished: Yes  
Enclosed: Yes  
Contiguous: Yes  
Permitted: Yes  
Wet space: No  
Addition: No  
Conversion: No

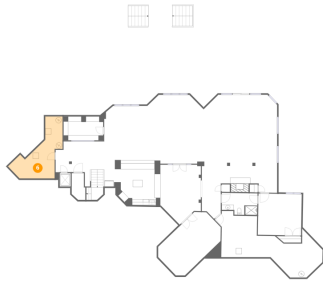
### 5 Floor 1 - Wet Bar



Dimensions: 19'0" x 15'1"  
Area: 287 sq. ft  
Counted as living area: Yes

Heated: Yes  
Finished: Yes  
Enclosed: Yes  
Contiguous: Yes  
Permitted: Yes  
Wet space: No  
Addition: No  
Conversion: No

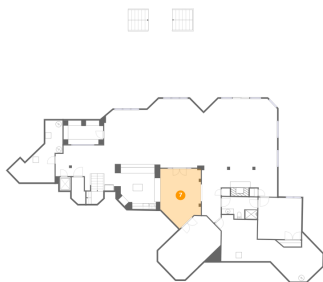
## 6 Floor 1 - Utility



Dimensions: 15'9" x 20'11"  
Area: 329 sq. ft  
Counted as living area: No

Heated: Yes  
Finished: No  
Enclosed: Yes  
Contiguous: Yes  
Permitted: Yes  
Wet space: No  
Addition: No  
Conversion: No

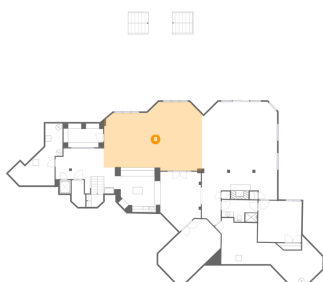
## 7 Floor 1 - Lounge



Dimensions: 13'8" x 20'3"  
Area: 277 sq. ft  
Counted as living area: Yes

Heated: Yes  
Finished: Yes  
Enclosed: Yes  
Contiguous: Yes  
Permitted: Yes  
Wet space: No  
Addition: No  
Conversion: No

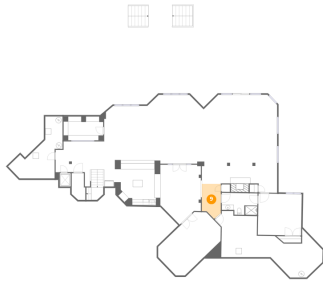
## 8 Floor 1 - Recreation / Game Room



Dimensions: 33'2" x 23'3"  
Area: 772 sq. ft  
Counted as living area: Yes

Heated: Yes  
Finished: Yes  
Enclosed: Yes  
Contiguous: Yes  
Permitted: Yes  
Wet space: No  
Addition: No  
Conversion: No

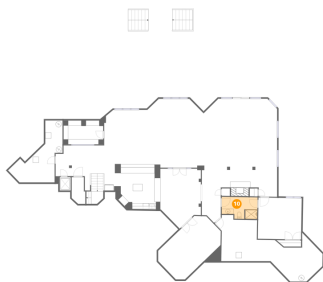
### 9 Floor 1 - Hall



Dimensions: 6'5" x 11'9"  
Area: 75 sq. ft  
Counted as living area: Yes

Heated: Yes  
Finished: Yes  
Enclosed: Yes  
Contiguous: Yes  
Permitted: Yes  
Wet space: No  
Addition: No  
Conversion: No

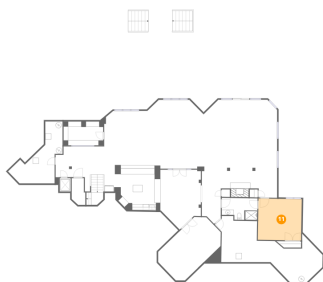
### 10 Floor 1 - Bath



Dimensions: 12'1" x 7'3"  
Area: 88 sq. ft  
Counted as living area: Yes

Heated: Yes  
Finished: Yes  
Enclosed: Yes  
Contiguous: Yes  
Permitted: Yes  
Wet space: Yes  
Addition: No  
Conversion: No

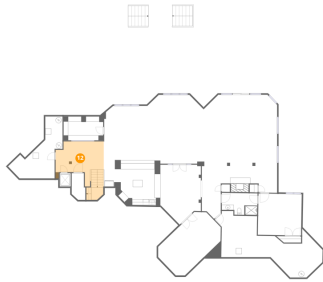
### 11 Floor 1 - Bedroom



Dimensions: 14'7" x 13'11"  
Area: 203 sq. ft  
Counted as living area: Yes

Heated: Yes  
Finished: Yes  
Enclosed: Yes  
Contiguous: Yes  
Permitted: Yes  
Wet space: No  
Addition: No  
Conversion: No

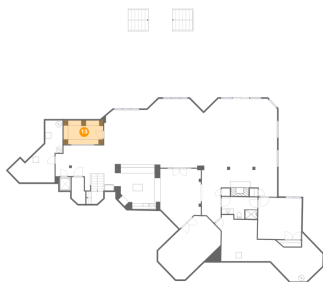
## 12 Floor 1 - Hall



Dimensions: 16'3" x 15'2"  
Area: 248 sq. ft  
Counted as living area: Yes

Heated: Yes  
Finished: Yes  
Enclosed: Yes  
Contiguous: Yes  
Permitted: Yes  
Wet space: No  
Addition: No  
Conversion: No

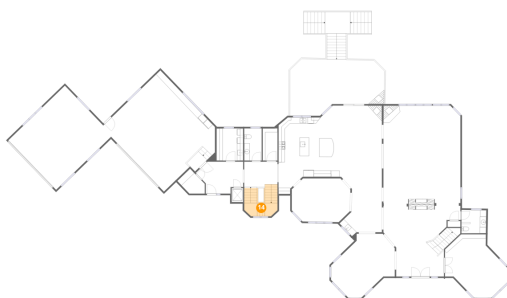
## 13 Floor 1 - Wine Cellar



Dimensions: 13'5" x 8'1"  
Area: 109 sq. ft  
Counted as living area: No

Heated: No  
Finished: No  
Enclosed: Yes  
Contiguous: Yes  
Permitted: Yes  
Wet space: No  
Addition: No  
Conversion: No

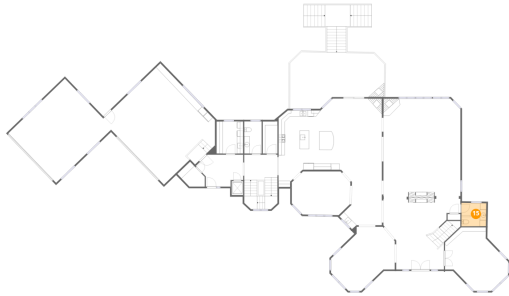
## 14 Floor 2 - Stairwell



Dimensions: 10'8" x 10'3"  
Area: 109 sq. ft  
Counted as living area: No

Heated: No  
Finished: No  
Enclosed: No  
Contiguous: Yes  
Permitted: No  
Wet space: No  
Addition: No  
Conversion: No

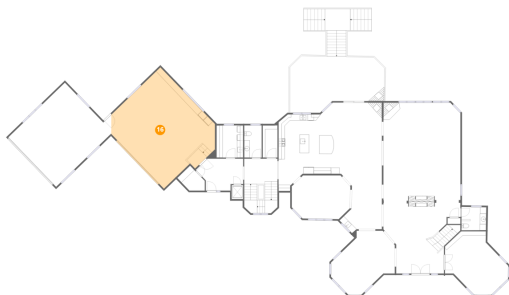
**15** Floor 2 - Bath



Dimensions: 8'0" x 7'5"  
Area: 59 sq. ft  
Counted as living area: Yes

Heated: Yes  
Finished: Yes  
Enclosed: Yes  
Contiguous: Yes  
Permitted: Yes  
Wet space: Yes  
Addition: No  
Conversion: No

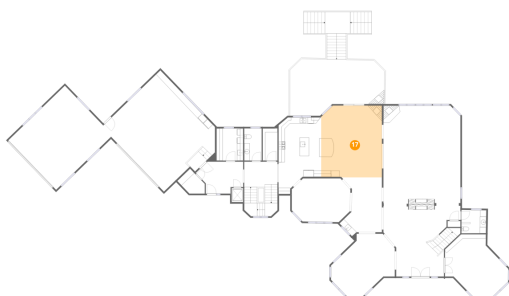
**16** Floor 2 - Garage



Dimensions: 26'1" x 28'10"  
Area: 752 sq. ft  
Counted as living area: No

Heated: No  
Finished: No  
Enclosed: Yes  
Contiguous: Yes  
Permitted: Yes  
Wet space: No  
Addition: No  
Conversion: No

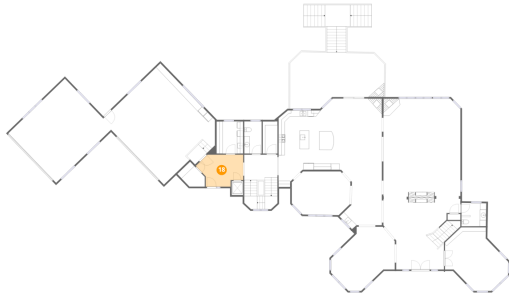
**17** Floor 2 - Breakfast Room



Dimensions: 19'6" x 23'1"  
Area: 449 sq. ft  
Counted as living area: Yes

Heated: Yes  
Finished: Yes  
Enclosed: Yes  
Contiguous: Yes  
Permitted: Yes  
Wet space: No  
Addition: No  
Conversion: No

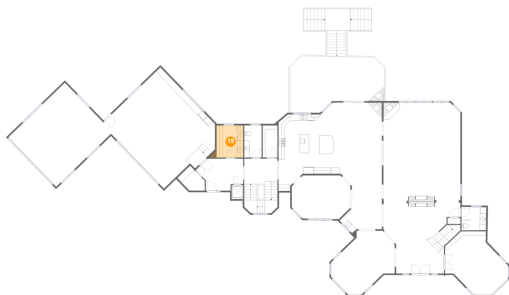
**18** Floor 2 - Hall



Dimensions: 15'3" x 10'3"  
Area: 156 sq. ft  
Counted as living area: Yes

Heated: Yes  
Finished: Yes  
Enclosed: Yes  
Contiguous: Yes  
Permitted: Yes  
Wet space: No  
Addition: No  
Conversion: No

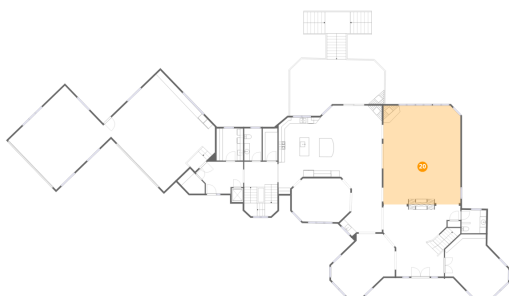
**19** Floor 2 - Laundry



Dimensions: 8'7" x 10'4"  
Area: 89 sq. ft  
Counted as living area: Yes

Heated: Yes  
Finished: Yes  
Enclosed: Yes  
Contiguous: Yes  
Permitted: Yes  
Wet space: No  
Addition: No  
Conversion: No

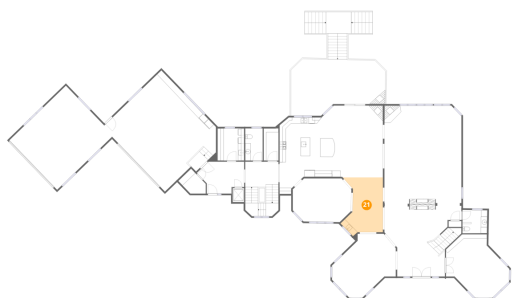
**20** Floor 2 - Great Room



Dimensions: 24'8" x 31'9"  
Area: 783 sq. ft  
Counted as living area: Yes

Heated: Yes  
Finished: Yes  
Enclosed: Yes  
Contiguous: Yes  
Permitted: Yes  
Wet space: No  
Addition: No  
Conversion: No

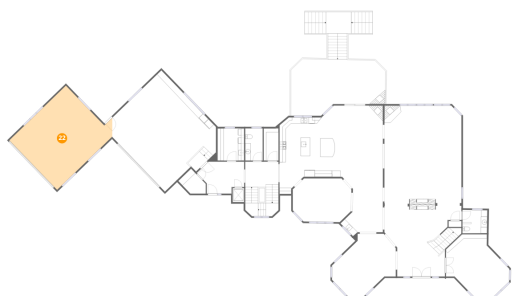
### 21 Floor 2 - Hall



Dimensions: 13'7" x 18'10"  
Area: 256 sq. ft  
Counted as living area: Yes

Heated: Yes  
Finished: Yes  
Enclosed: Yes  
Contiguous: Yes  
Permitted: Yes  
Wet space: No  
Addition: No  
Conversion: No

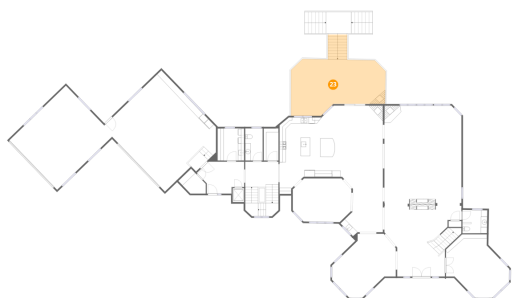
### 22 Floor 2 - Garage



Dimensions: 22'0" x 25'3"  
Area: 556 sq. ft  
Counted as living area: No

Heated: No  
Finished: No  
Enclosed: Yes  
Contiguous: Yes  
Permitted: Yes  
Wet space: No  
Addition: No  
Conversion: No

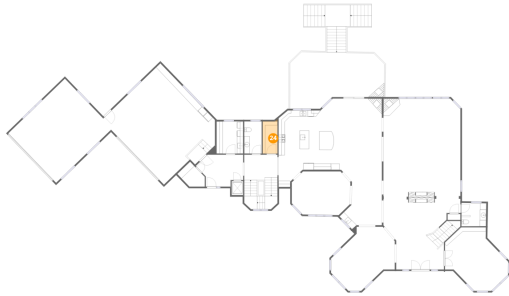
### 23 Floor 2 - Deck



Dimensions: 30'4" x 23'11"  
Area: 725 sq. ft  
Counted as living area: No

Heated: No  
Finished: No  
Enclosed: No  
Contiguous: Yes  
Permitted: Yes  
Wet space: No  
Addition: No  
Conversion: No

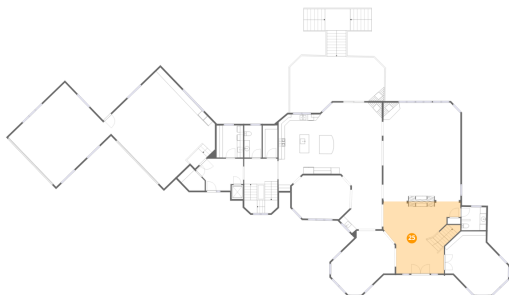
**24** Floor 2 - Pantry



Dimensions: 4'9" x 10'4"  
Area: 49 sq. ft  
Counted as living area: Yes

Heated: Yes  
Finished: Yes  
Enclosed: Yes  
Contiguous: Yes  
Permitted: Yes  
Wet space: No  
Addition: No  
Conversion: No

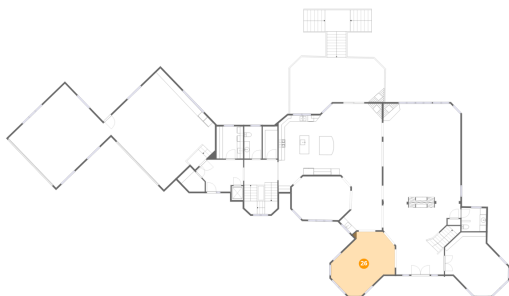
**25** Floor 2 - Foyer



Dimensions: 24'9" x 23'1"  
Area: 571 sq. ft  
Counted as living area: Yes

Heated: Yes  
Finished: Yes  
Enclosed: Yes  
Contiguous: Yes  
Permitted: Yes  
Wet space: No  
Addition: No  
Conversion: No

**26** Floor 2 - Living Room

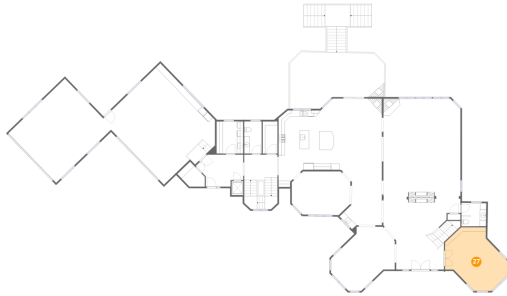


Dimensions: 20'5" x 20'7"  
Area: 421 sq. ft  
Counted as living area: Yes

Heated: Yes  
Finished: Yes  
Enclosed: Yes  
Contiguous: Yes  
Permitted: Yes  
Wet space: No  
Addition: No  
Conversion: No

**27** Floor 2 - Office

---

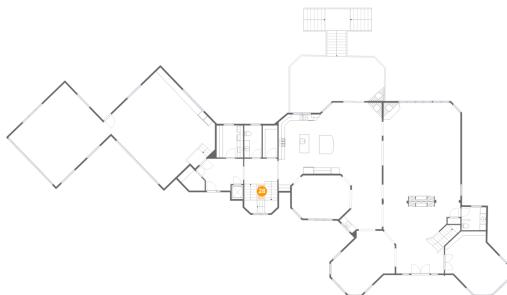


Dimensions: 14'3" x 21'5"  
Area: 305 sq. ft  
Counted as living area: Yes

Heated: Yes  
Finished: Yes  
Enclosed: Yes  
Contiguous: Yes  
Permitted: Yes  
Wet space: No  
Addition: No  
Conversion: No

**28** Floor 2 - Open To Below

---

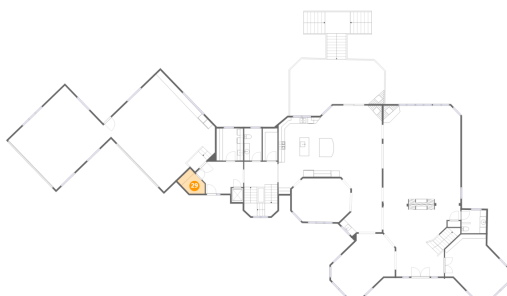


Dimensions: 1'10" x 4'5"  
Area: 8 sq. ft  
Counted as living area: Yes

Heated: No  
Finished: No  
Enclosed: No  
Contiguous: Yes  
Permitted: No  
Wet space: No  
Addition: No  
Conversion: No

**29** Floor 2 - W.I.C.

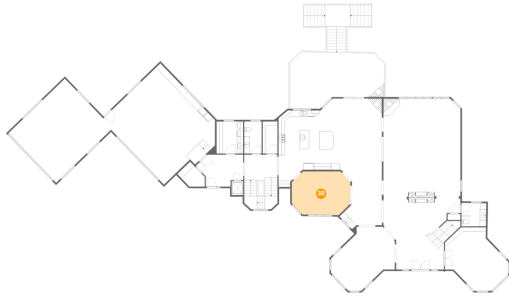
---



Dimensions: 7'11" x 8'0"  
Area: 63 sq. ft  
Counted as living area: Yes

Heated: Yes  
Finished: Yes  
Enclosed: Yes  
Contiguous: Yes  
Permitted: Yes  
Wet space: No  
Addition: No  
Conversion: No

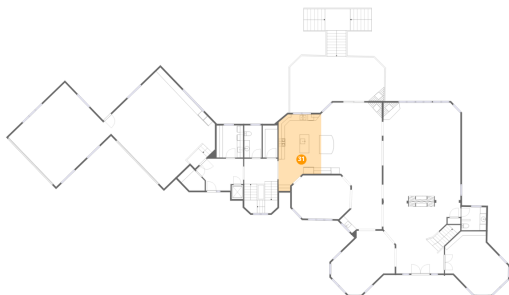
### 30 Floor 2 - Dining Room



Dimensions: 18'9" x 14'0"  
Area: 263 sq. ft  
Counted as living area: Yes

Heated: Yes  
Finished: Yes  
Enclosed: Yes  
Contiguous: Yes  
Permitted: Yes  
Wet space: No  
Addition: No  
Conversion: No

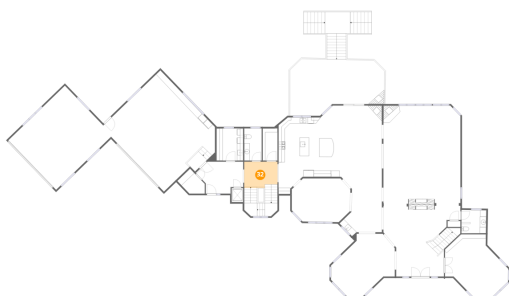
### 31 Floor 2 - Kitchen



Dimensions: 13'9" x 24'7"  
Area: 338 sq. ft  
Counted as living area: Yes

Heated: Yes  
Finished: Yes  
Enclosed: Yes  
Contiguous: Yes  
Permitted: Yes  
Wet space: No  
Addition: No  
Conversion: No

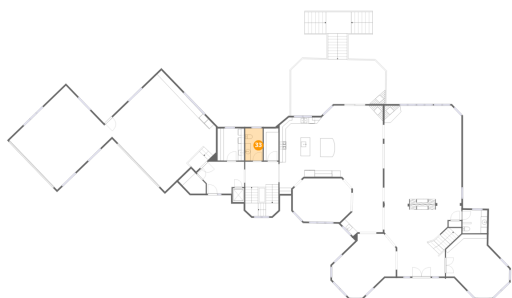
### 32 Floor 2 - Hall



Dimensions: 10'8" x 8'2"  
Area: 87 sq. ft  
Counted as living area: Yes

Heated: Yes  
Finished: Yes  
Enclosed: Yes  
Contiguous: Yes  
Permitted: Yes  
Wet space: No  
Addition: No  
Conversion: No

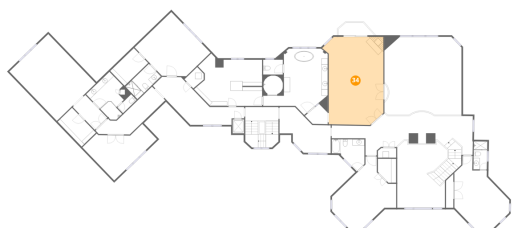
### 33 Floor 2 - Bath



Dimensions: 5'7" x 10'4"  
Area: 58 sq. ft  
Counted as living area: Yes

Heated: Yes  
Finished: Yes  
Enclosed: Yes  
Contiguous: Yes  
Permitted: Yes  
Wet space: Yes  
Addition: No  
Conversion: No

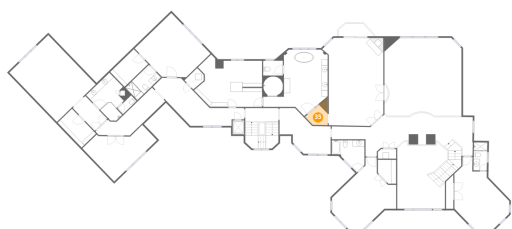
### 34 Floor 3 - Primary Bedroom



Dimensions: 19'8" x 28'3"  
Area: 556 sq. ft  
Counted as living area: Yes

Heated: Yes  
Finished: Yes  
Enclosed: Yes  
Contiguous: Yes  
Permitted: Yes  
Wet space: No  
Addition: No  
Conversion: No

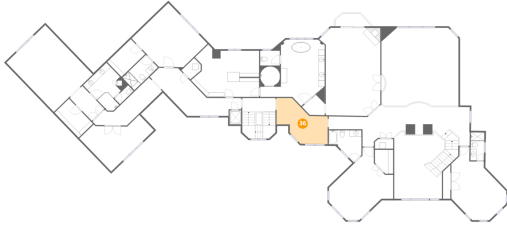
### 35 Floor 3 - Hall



Dimensions: 7'3" x 6'6"  
Area: 47 sq. ft  
Counted as living area: Yes

Heated: Yes  
Finished: Yes  
Enclosed: Yes  
Contiguous: Yes  
Permitted: Yes  
Wet space: No  
Addition: No  
Conversion: No

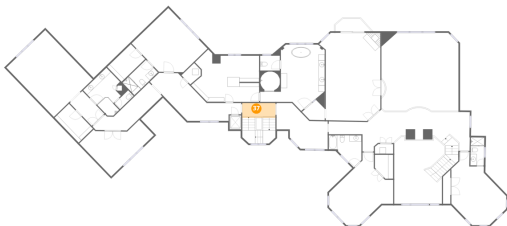
**36** Floor 3 - Hall



Dimensions: 16'5" x 11'9"  
Area: 193 sq. ft  
Counted as living area: Yes

Heated: Yes  
Finished: Yes  
Enclosed: Yes  
Contiguous: Yes  
Permitted: Yes  
Wet space: No  
Addition: No  
Conversion: No

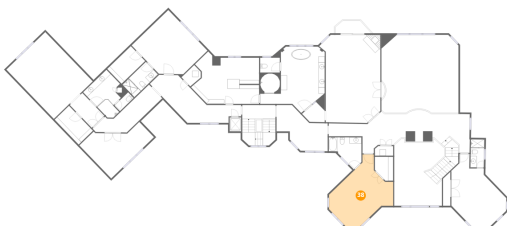
**37** Floor 3 - Hall



Dimensions: 10'8" x 4'6"  
Area: 48 sq. ft  
Counted as living area: Yes

Heated: Yes  
Finished: Yes  
Enclosed: Yes  
Contiguous: Yes  
Permitted: Yes  
Wet space: No  
Addition: No  
Conversion: No

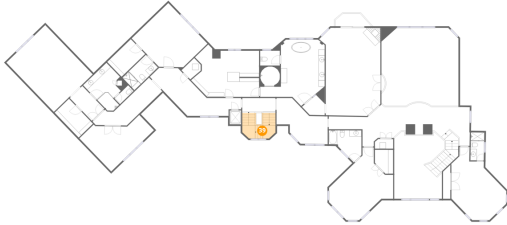
**38** Floor 3 - Bedroom



Dimensions: 20'7" x 22'3"  
Area: 459 sq. ft  
Counted as living area: Yes

Heated: Yes  
Finished: Yes  
Enclosed: Yes  
Contiguous: Yes  
Permitted: Yes  
Wet space: No  
Addition: No  
Conversion: No

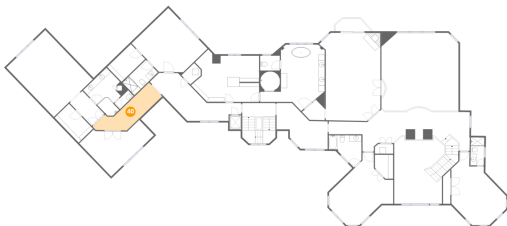
**39** Floor 3 - Stairwell



Dimensions: 10'9" x 8'3"  
Area: 89 sq. ft  
Counted as living area: No

Heated: No  
Finished: No  
Enclosed: No  
Contiguous: Yes  
Permitted: No  
Wet space: No  
Addition: No  
Conversion: No

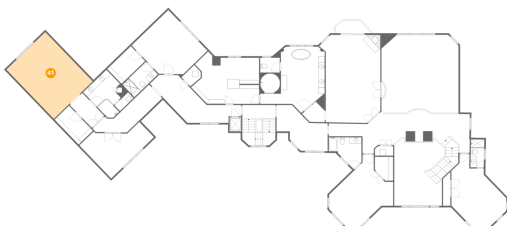
**40** Floor 3 - Hall



Dimensions: 12'3" x 8'6"  
Area: 104 sq. ft  
Counted as living area: Yes

Heated: Yes  
Finished: Yes  
Enclosed: Yes  
Contiguous: Yes  
Permitted: Yes  
Wet space: No  
Addition: No  
Conversion: No

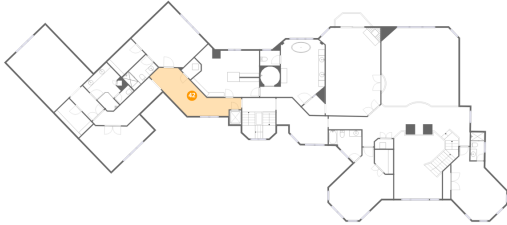
**41** Floor 3 - Bedroom



Dimensions: 17'4" x 21'11"  
Area: 380 sq. ft  
Counted as living area: Yes

Heated: Yes  
Finished: Yes  
Enclosed: Yes  
Contiguous: Yes  
Permitted: Yes  
Wet space: No  
Addition: No  
Conversion: No

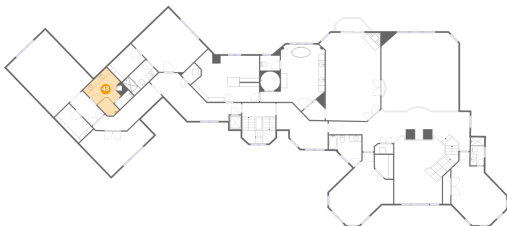
**42** Floor 3 - Hall



Dimensions: 22'10" x 12'1"  
Area: 276 sq. ft  
Counted as living area: Yes

Heated: Yes  
Finished: Yes  
Enclosed: Yes  
Contiguous: Yes  
Permitted: Yes  
Wet space: No  
Addition: No  
Conversion: No

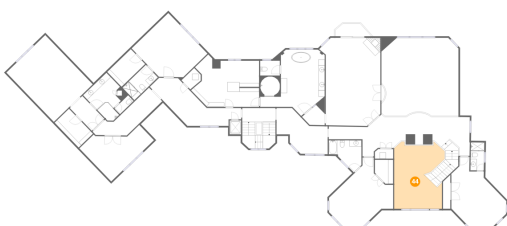
**43** Floor 3 - Bath



Dimensions: 12'6" x 10'5"  
Area: 130 sq. ft  
Counted as living area: Yes

Heated: Yes  
Finished: Yes  
Enclosed: Yes  
Contiguous: Yes  
Permitted: Yes  
Wet space: Yes  
Addition: No  
Conversion: No

**44** Floor 3 - Open To Below

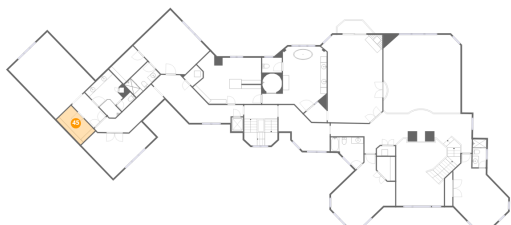


Dimensions: 16'1" x 21'6"  
Area: 345 sq. ft  
Counted as living area: No

Heated: No  
Finished: No  
Enclosed: No  
Contiguous: Yes  
Permitted: No  
Wet space: No  
Addition: No  
Conversion: No

**45** Floor 3 - W.I.C.

---

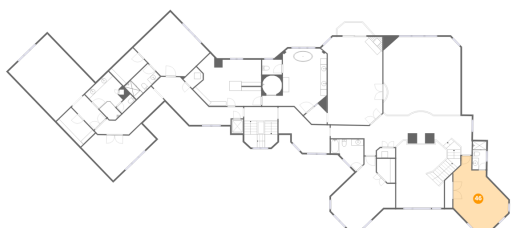


Dimensions: 6'5" x 11'1"  
Area: 71 sq. ft  
Counted as living area: Yes

Heated: Yes  
Finished: Yes  
Enclosed: Yes  
Contiguous: Yes  
Permitted: Yes  
Wet space: No  
Addition: No  
Conversion: No

**46** Floor 3 - Bedroom

---

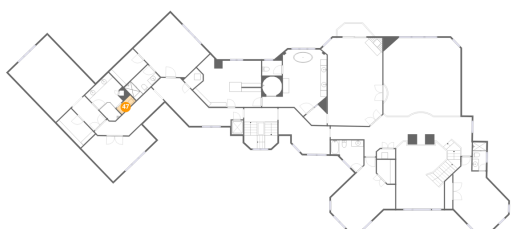


Dimensions: 17'7" x 21'3"  
Area: 374 sq. ft  
Counted as living area: Yes

Heated: Yes  
Finished: Yes  
Enclosed: Yes  
Contiguous: Yes  
Permitted: Yes  
Wet space: No  
Addition: No  
Conversion: No

**47** Floor 3 - Bath

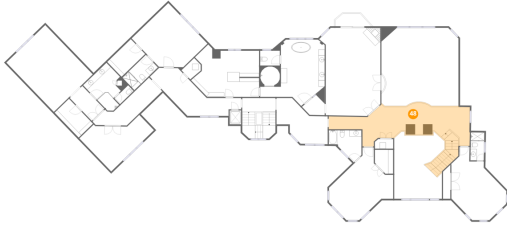
---



Dimensions: 2'6" x 5'11"  
Area: 15 sq. ft  
Counted as living area: Yes

Heated: Yes  
Finished: Yes  
Enclosed: Yes  
Contiguous: Yes  
Permitted: Yes  
Wet space: No  
Addition: No  
Conversion: No

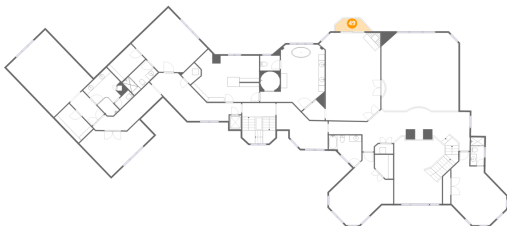
**48** Floor 3 - Hall



Dimensions: 45'3" x 12'5"  
Area: 563 sq. ft  
Counted as living area: Yes

Heated: Yes  
Finished: Yes  
Enclosed: Yes  
Contiguous: Yes  
Permitted: Yes  
Wet space: No  
Addition: No  
Conversion: No

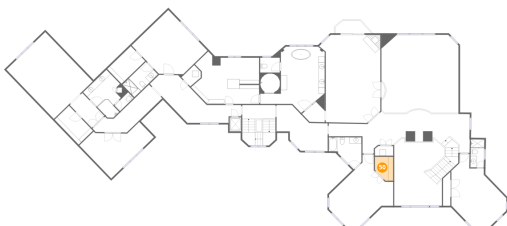
**49** Floor 3 - Balcony



Dimensions: 11'1" x 4'0"  
Area: 45 sq. ft  
Counted as living area: No

Heated: No  
Finished: No  
Enclosed: No  
Contiguous: Yes  
Permitted: Yes  
Wet space: No  
Addition: No  
Conversion: No

**50** Floor 3 - W.I.C.

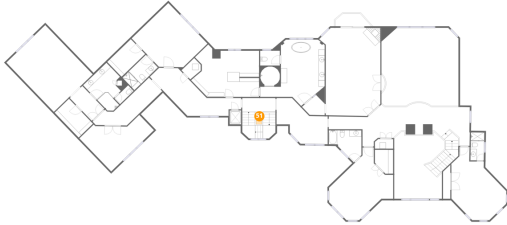


Dimensions: 5'11" x 7'8"  
Area: 45 sq. ft  
Counted as living area: Yes

Heated: Yes  
Finished: Yes  
Enclosed: Yes  
Contiguous: Yes  
Permitted: Yes  
Wet space: No  
Addition: No  
Conversion: No

**51** Floor 3 - Open To Below

---

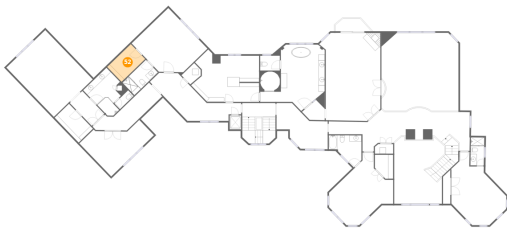


Dimensions: 1'9" x 3'7"  
Area: 6 sq. ft  
Counted as living area: Yes

Heated: No  
Finished: No  
Enclosed: No  
Contiguous: Yes  
Permitted: No  
Wet space: No  
Addition: No  
Conversion: No

**52** Floor 3 - W.I.C.

---

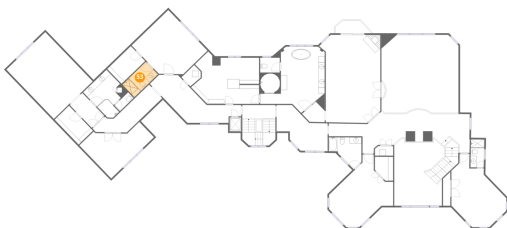


Dimensions: 6'7" x 10'5"  
Area: 69 sq. ft  
Counted as living area: Yes

Heated: Yes  
Finished: Yes  
Enclosed: Yes  
Contiguous: Yes  
Permitted: Yes  
Wet space: No  
Addition: No  
Conversion: No

**53** Floor 3 - Bath

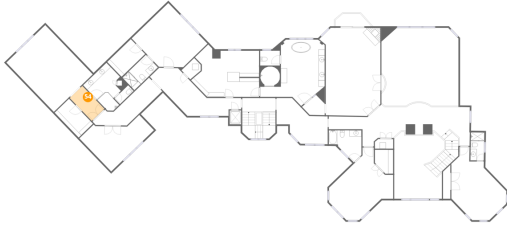
---



Dimensions: 10'6" x 5'6"  
Area: 58 sq. ft  
Counted as living area: Yes

Heated: Yes  
Finished: Yes  
Enclosed: Yes  
Contiguous: Yes  
Permitted: Yes  
Wet space: Yes  
Addition: No  
Conversion: No

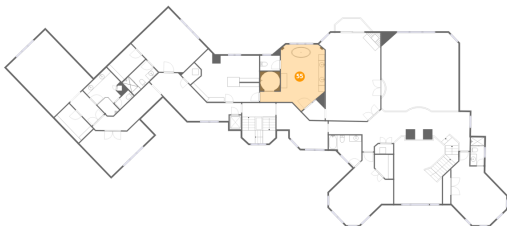
**54** Floor 3 - Hall



Dimensions: 5'7" x 10'2"  
Area: 57 sq. ft  
Counted as living area: Yes

Heated: Yes  
Finished: Yes  
Enclosed: Yes  
Contiguous: Yes  
Permitted: Yes  
Wet space: No  
Addition: No  
Conversion: No

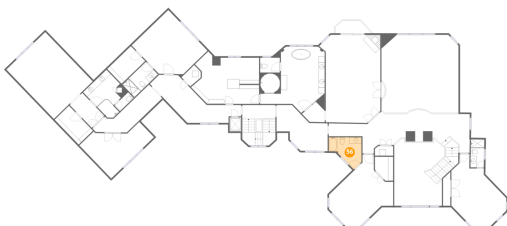
**55** Floor 3 - Primary Bath



Dimensions: 20'6" x 21'3"  
Area: 437 sq. ft  
Counted as living area: Yes

Heated: Yes  
Finished: Yes  
Enclosed: Yes  
Contiguous: Yes  
Permitted: Yes  
Wet space: Yes  
Addition: No  
Conversion: No

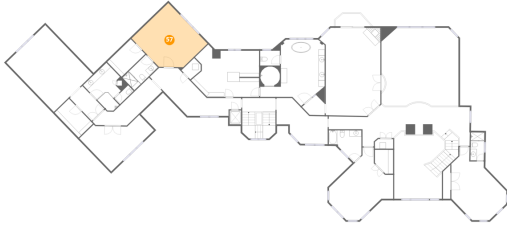
**56** Floor 3 - Bath



Dimensions: 10'6" x 10'3"  
Area: 108 sq. ft  
Counted as living area: Yes

Heated: Yes  
Finished: Yes  
Enclosed: Yes  
Contiguous: Yes  
Permitted: Yes  
Wet space: Yes  
Addition: No  
Conversion: No

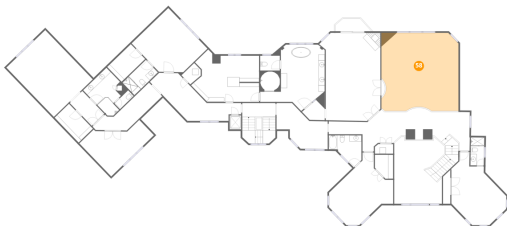
**57** Floor 3 - Bedroom



Dimensions: 18'0" x 16'5"  
Area: 296 sq. ft  
Counted as living area: Yes

Heated: Yes  
Finished: Yes  
Enclosed: Yes  
Contiguous: Yes  
Permitted: Yes  
Wet space: No  
Addition: No  
Conversion: No

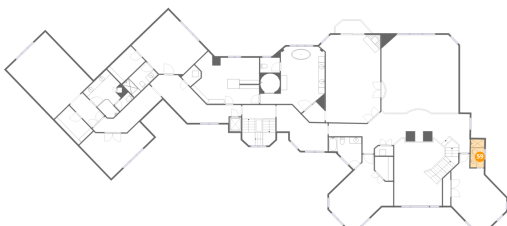
**58** Floor 3 - Open To Below



Dimensions: 24'9" x 24'1"  
Area: 597 sq. ft  
Counted as living area: No

Heated: No  
Finished: No  
Enclosed: No  
Contiguous: Yes  
Permitted: No  
Wet space: No  
Addition: No  
Conversion: No

**59** Floor 3 - Bath

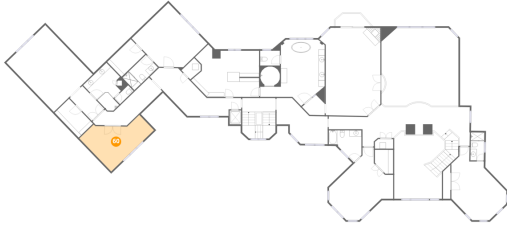


Dimensions: 4'4" x 9'0"  
Area: 39 sq. ft  
Counted as living area: Yes

Heated: Yes  
Finished: Yes  
Enclosed: Yes  
Contiguous: Yes  
Permitted: Yes  
Wet space: Yes  
Addition: No  
Conversion: No

**60** Floor 3 - Exercise Room

---

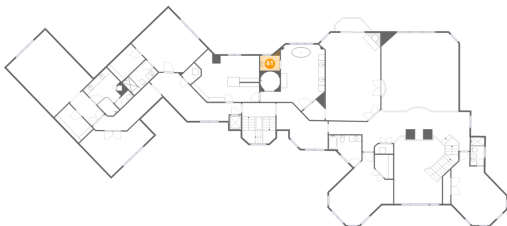


Dimensions: 21'2" x 14'6"  
Area: 307 sq. ft  
Counted as living area: Yes

Heated: Yes  
Finished: Yes  
Enclosed: Yes  
Contiguous: Yes  
Permitted: Yes  
Wet space: No  
Addition: No  
Conversion: No

**61** Floor 3 - Bath

---

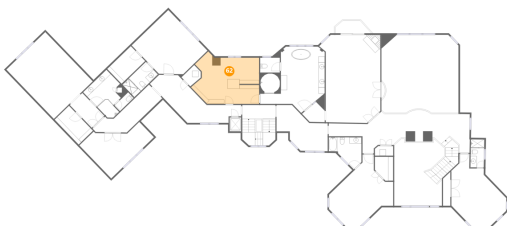


Dimensions: 6'4" x 4'9"  
Area: 30 sq. ft  
Counted as living area: Yes

Heated: Yes  
Finished: Yes  
Enclosed: Yes  
Contiguous: Yes  
Permitted: Yes  
Wet space: Yes  
Addition: No  
Conversion: No

**62** Floor 3 - W.I.C.

---



Dimensions: 21'11" x 16'10"  
Area: 368 sq. ft  
Counted as living area: Yes

Heated: Yes  
Finished: Yes  
Enclosed: Yes  
Contiguous: Yes  
Permitted: Yes  
Wet space: No  
Addition: No  
Conversion: No