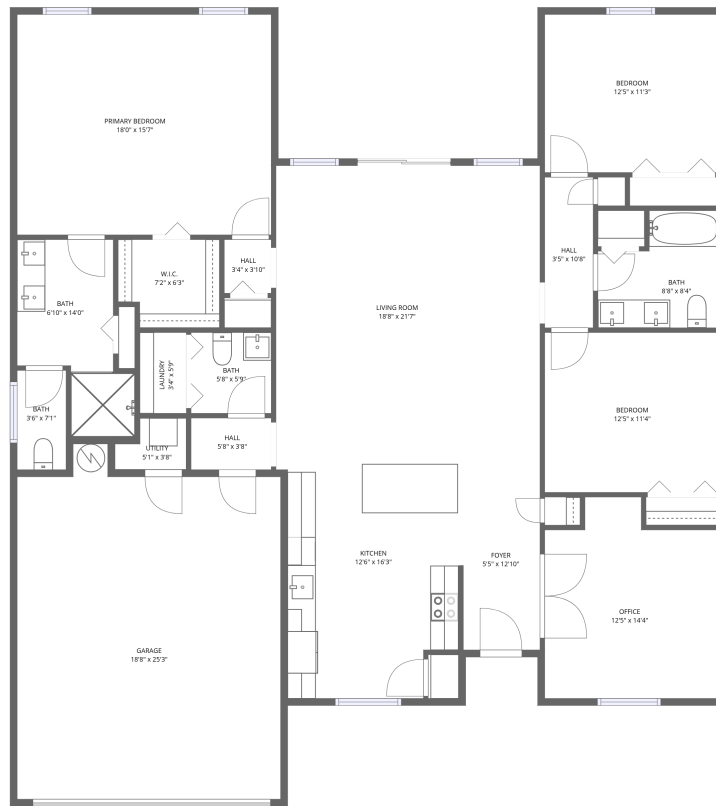


Home data report

449 Wells Avenue Southwest, Palm Bay, Brevard County, Florida, United States, 32908



1st floor

Total Area: 2290 sq. ft

1st Floor: 2290 sq. ft

Excluded: Utility 15 sq. ft, Walls: 140 sq. ft

Property summary

 **1** Floors

 **3** Bedrooms

 **2** Bathrooms

Home data report

**449 Wells Avenue Southwest, Palm Bay, Brevard County, Florida,
United States, 32908**



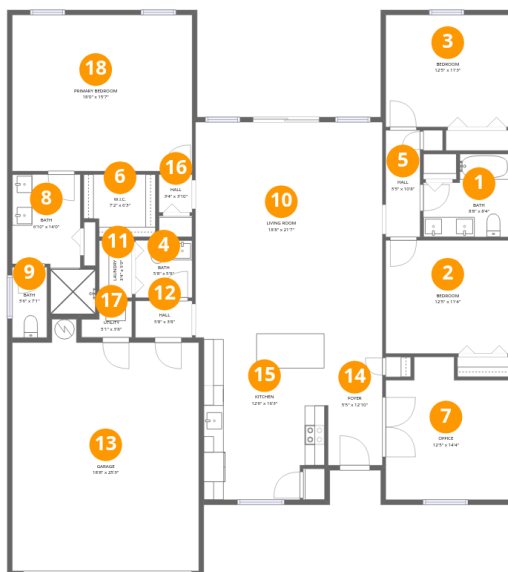
1
Half baths



1
Garages

Home data report

449 Wells Avenue Southwest, Palm Bay, Brevard County, Florida, United States, 32908



Room dimensions

Floor 1

Total:2290sqft Excluded: 15sqft

#		Dimensions	sqft	Counted as living area
1	Bath	8'8" x 8'4"	72 sq. ft	Yes
2	Bedroom	12'5" x 11'4"	141 sq. ft	Yes
3	Bedroom	12'5" x 11'3"	139 sq. ft	Yes
4	Bath	5'8" x 5'9"	33 sq. ft	Yes
5	Hall	3'5" x 10'8"	37 sq. ft	Yes
6	W.I.C.	7'2" x 6'3"	45 sq. ft	Yes
7	Office	12'5" x 14'4"	178 sq. ft	Yes
8	Bath	6'10" x 14'0"	95 sq. ft	Yes
9	Bath	3'6" x 7'1"	24 sq. ft	Yes
10	Living Room	18'8" x 21'7"	403 sq. ft	Yes
11	Laundry	3'4" x 5'9"	19 sq. ft	Yes

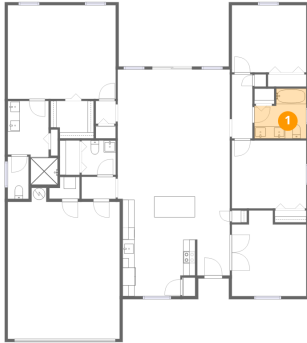
Home data report

**449 Wells Avenue Southwest, Palm Bay, Brevard County, Florida,
United States, 32908**

#		Dimensions	sqft	Counted as living area
12	Hall	5'8" x 3'8"	21 sq. ft	Yes
13	Garage	18'8" x 25'3"	471 sq. ft	Yes
14	Foyer	5'5" x 12'10"	70 sq. ft	Yes
15	Kitchen	12'6" x 16'3"	202 sq. ft	Yes
16	Hall	3'4" x 3'10"	13 sq. ft	Yes
17	Utility	5'1" x 3'8"	19 sq. ft	No
18	Primary Bedroom	18'0" x 15'7"	281 sq. ft	Yes

449 Wells Avenue Southwest, Palm Bay, Brevard County, Florida,
United States, 32908

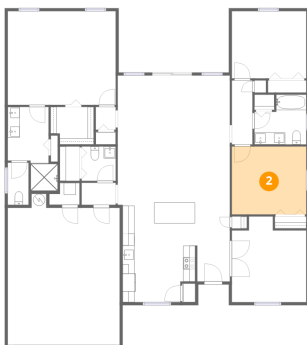
1 Floor 1 - Bath



Dimensions: 8'8" x 8'4"
Area: 72 sq. ft
Counted as living area: Yes

Heated: Yes
Finished: Yes
Enclosed: Yes
Contiguous: Yes
Permitted: Yes
Wet space: Yes
Addition: No
Conversion: No

2 Floor 1 - Bedroom

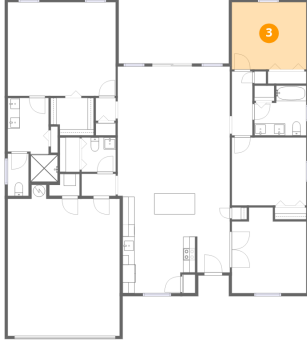


Dimensions: 12'5" x 11'4"
Area: 141 sq. ft
Counted as living area: Yes

Heated: Yes
Finished: Yes
Enclosed: Yes
Contiguous: Yes
Permitted: Yes
Wet space: No
Addition: No
Conversion: No

449 Wells Avenue Southwest, Palm Bay, Brevard County, Florida,
United States, 32908

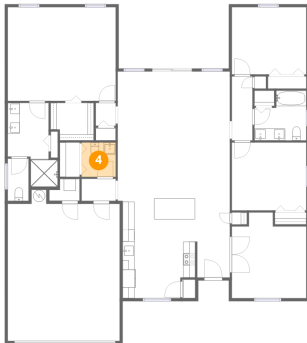
3 Floor 1 - Bedroom



Dimensions: 12'5" x 11'3"
Area: 139 sq. ft
Counted as living area: Yes

Heated: Yes
Finished: Yes
Enclosed: Yes
Contiguous: Yes
Permitted: Yes
Wet space: No
Addition: No
Conversion: No

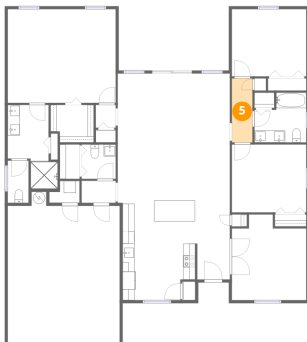
4 Floor 1 - Bath



Dimensions: 5'8" x 5'9"
Area: 33 sq. ft
Counted as living area: Yes

Heated: Yes
Finished: Yes
Enclosed: Yes
Contiguous: Yes
Permitted: Yes
Wet space: Yes
Addition: No
Conversion: No

5 Floor 1 - Hall

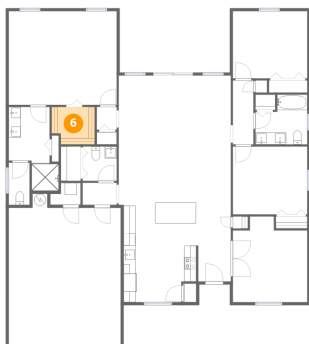


Dimensions: 3'5" x 10'8"
Area: 37 sq. ft
Counted as living area: Yes

Heated: Yes
Finished: Yes
Enclosed: Yes
Contiguous: Yes
Permitted: Yes
Wet space: No
Addition: No
Conversion: No

449 Wells Avenue Southwest, Palm Bay, Brevard County, Florida,
United States, 32908

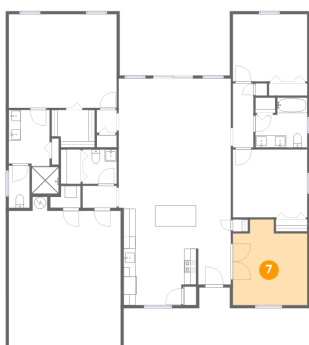
6 Floor 1 - W.I.C.



Dimensions: 7'2" x 6'3"
Area: 45 sq. ft
Counted as living area: Yes

Heated: Yes
Finished: Yes
Enclosed: Yes
Contiguous: Yes
Permitted: Yes
Wet space: No
Addition: No
Conversion: No

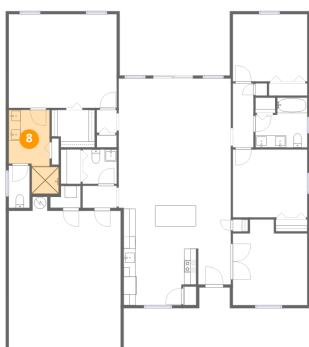
7 Floor 1 - Office



Dimensions: 12'5" x 14'4"
Area: 178 sq. ft
Counted as living area: Yes

Heated: Yes
Finished: Yes
Enclosed: Yes
Contiguous: Yes
Permitted: Yes
Wet space: No
Addition: No
Conversion: No

8 Floor 1 - Bath

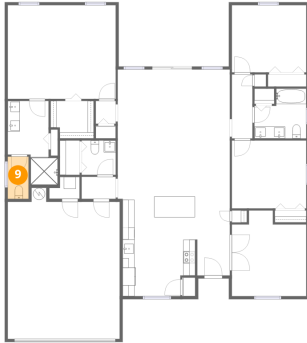


Dimensions: 6'10" x 14'0"
Area: 95 sq. ft
Counted as living area: Yes

Heated: Yes
Finished: Yes
Enclosed: Yes
Contiguous: Yes
Permitted: Yes
Wet space: Yes
Addition: No
Conversion: No

449 Wells Avenue Southwest, Palm Bay, Brevard County, Florida,
United States, 32908

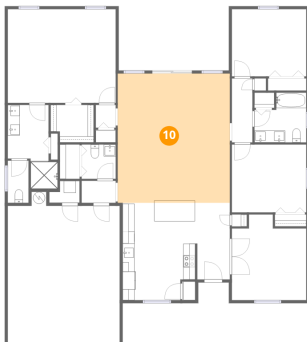
9 Floor 1 - Bath



Dimensions: 3'6" x 7'1"
Area: 24 sq. ft
Counted as living area: Yes

Heated: Yes
Finished: Yes
Enclosed: Yes
Contiguous: Yes
Permitted: Yes
Wet space: Yes
Addition: No
Conversion: No

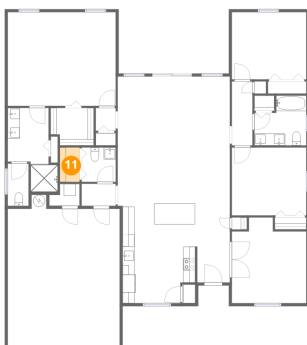
10 Floor 1 - Living Room



Dimensions: 18'8" x 21'7"
Area: 403 sq. ft
Counted as living area: Yes

Heated: Yes
Finished: Yes
Enclosed: Yes
Contiguous: Yes
Permitted: Yes
Wet space: No
Addition: No
Conversion: No

11 Floor 1 - Laundry

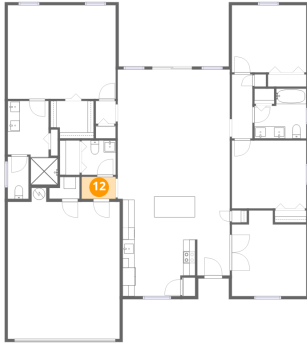


Dimensions: 3'4" x 5'9"
Area: 19 sq. ft
Counted as living area: Yes

Heated: Yes
Finished: Yes
Enclosed: Yes
Contiguous: Yes
Permitted: Yes
Wet space: No
Addition: No
Conversion: No

449 Wells Avenue Southwest, Palm Bay, Brevard County, Florida,
United States, 32908

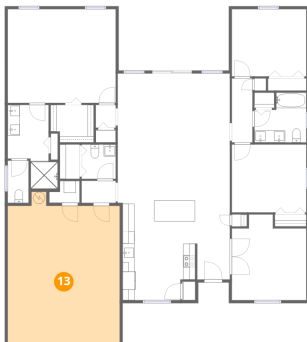
12 Floor 1 - Hall



Dimensions: 5'8" x 3'8"
Area: 21 sq. ft
Counted as living area: Yes

Heated: Yes
Finished: Yes
Enclosed: Yes
Contiguous: Yes
Permitted: Yes
Wet space: No
Addition: No
Conversion: No

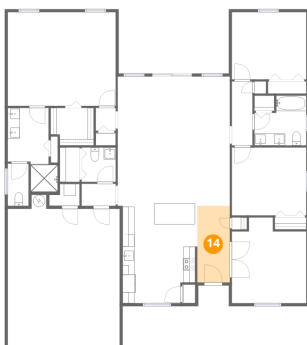
13 Floor 1 - Garage



Dimensions: 18'8" x 25'3"
Area: 471 sq. ft
Counted as living area: No

Heated: No
Finished: Yes
Enclosed: Yes
Contiguous: Yes
Permitted: Yes
Wet space: No
Addition: No
Conversion: No

14 Floor 1 - Foyer

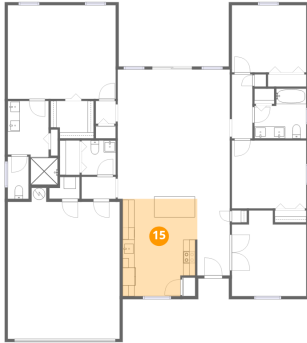


Dimensions: 5'5" x 12'10"
Area: 70 sq. ft
Counted as living area: Yes

Heated: Yes
Finished: Yes
Enclosed: Yes
Contiguous: Yes
Permitted: Yes
Wet space: No
Addition: No
Conversion: No

449 Wells Avenue Southwest, Palm Bay, Brevard County, Florida,
United States, 32908

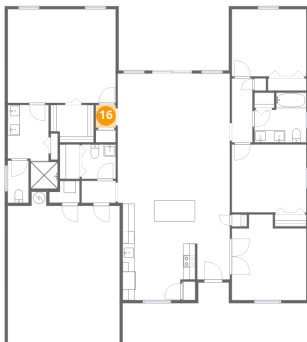
15 Floor 1 - Kitchen



Dimensions: 12'6" x 16'3"
Area: 202 sq. ft
Counted as living area: Yes

Heated: Yes
Finished: Yes
Enclosed: Yes
Contiguous: Yes
Permitted: Yes
Wet space: No
Addition: No
Conversion: No

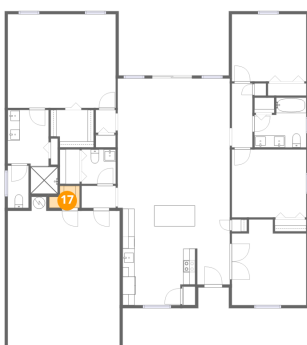
16 Floor 1 - Hall



Dimensions: 3'4" x 3'10"
Area: 13 sq. ft
Counted as living area: Yes

Heated: Yes
Finished: Yes
Enclosed: Yes
Contiguous: Yes
Permitted: Yes
Wet space: No
Addition: No
Conversion: No

17 Floor 1 - Utility

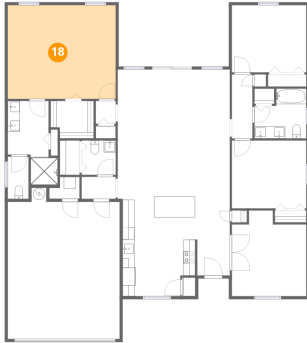


Dimensions: 5'1" x 3'8"
Area: 19 sq. ft
Counted as living area: No

Heated: Yes
Finished: No
Enclosed: Yes
Contiguous: Yes
Permitted: Yes
Wet space: No
Addition: No
Conversion: No

449 Wells Avenue Southwest, Palm Bay, Brevard County, Florida,
United States, 32908

18 Floor 1 - Primary Bedroom



Dimensions: 18'0" x 15'7"

Area: 281 sq. ft

Counted as living area: Yes

Heated: Yes

Finished: Yes

Enclosed: Yes

Contiguous: Yes

Permitted: Yes

Wet space: No

Addition: No

Conversion: No