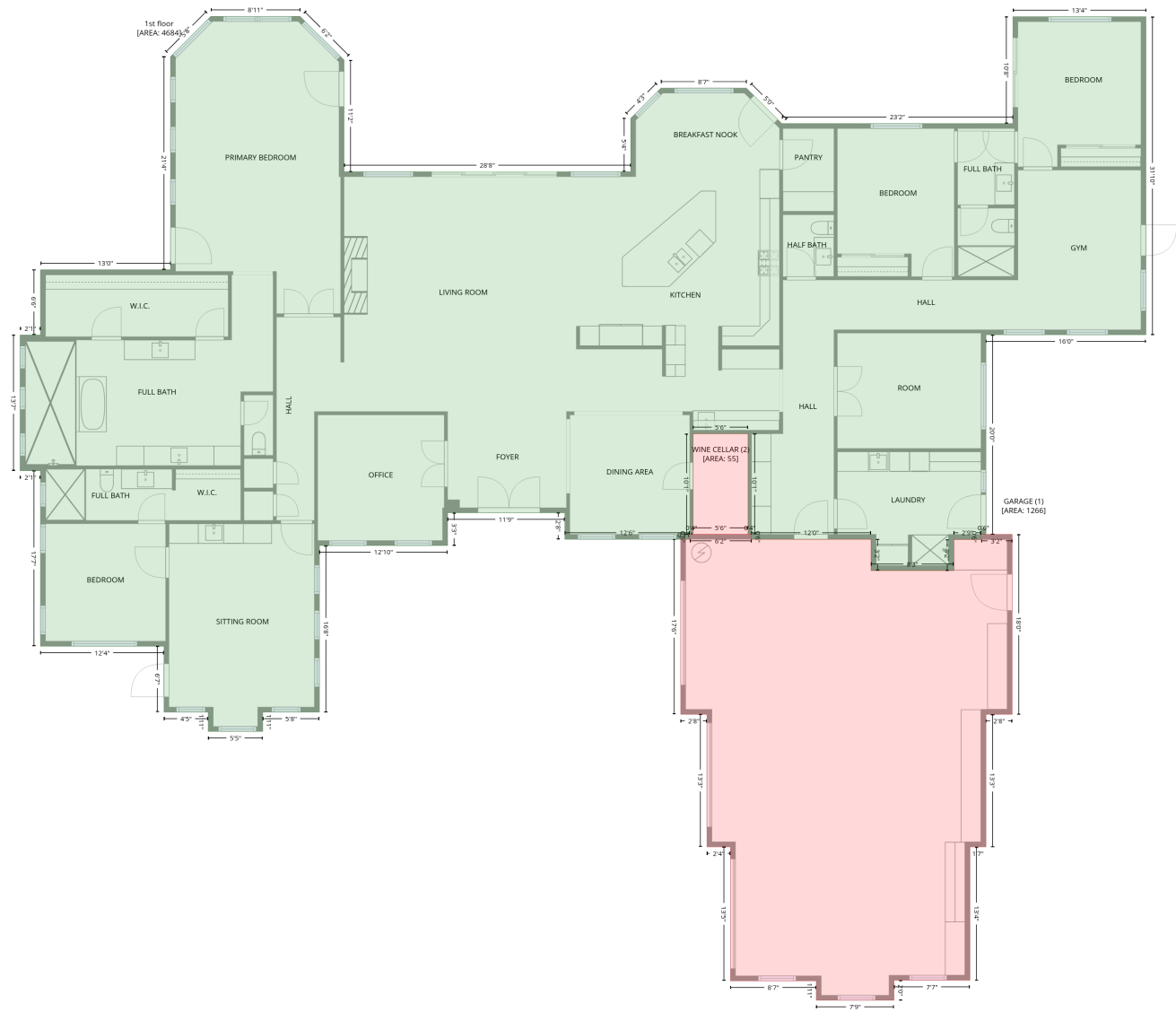


# 26475 North 106th Way, Troon Village, Scottsdale, Maricopa County, Arizona, United States, 85255

Gross Living Area: 4684 sq. ft

## Level 1



# 26475 North 106th Way, Troon Village, Scottsdale, Maricopa County, Arizona, United States, 85255

Gross Living Area: 4684 sq. ft

## Level 1

Space	Area (sq. ft)	Calculation <small>Coordinate Polygon Area Algorithm using inches</small>
1st floor (Living area)	4684	$  \begin{aligned}  & -((289.9 + 634.3) * (267.9 - 267.9) + (634.3 + 634.3) * (267.9 - 203.6) + (634.3 + 670.4) * (203.6 - 167.5) + (670.4 + 773.3) * (167.5 - 167.5) + (773.3 + 815.8) * (167.5 - 210) + (815.8 + 1093.4) * \\  & (210 - 210) + (1093.4 + 1093.4) * (210 - 81.7) + (1093.4 + 1253.2) * (81.7 - 81.7) + (1253.2 + 1253.2) * (81.7 - 463.6) + (1253.2 + 1061) * (463.6 - 463.6) + (1061 + 1061) * (463.6 - 703.3) + \\  & (1061 + 1055) * (703.3 - 703.3) + (1055 + 1055) * (703.3 - 709.3) + (1055 + 1022.4) * (709.3 - 709.3) + (1022.4 + 1022.4) * (709.3 - 746.9) + (1022.4 + 923) * (746.9 - 746.9) + (923 + 923) * \\  & (746.9 - 709.3) + (923 + 779.3) * (709.3 - 709.3) + (779.3 + 779.3) * (709.3 - 703.3) + (779.3 + 775.3) * (703.3 - 703.3) + (775.3 + 775.3) * (703.3 - 582.5) + (775.3 + 709.2) * (582.5 - 582.5) + \\  & (709.2 + 709.2) * (582.5 - 703.3) + (709.2 + 705.2) * (703.3 - 703.3) + (705.2 + 705.2) * (703.3 - 709.3) + (705.2 + 555.2) * (709.3 - 709.3) + (555.2 + 555.2) * (709.3 - 677.4) + (555.2 + 414.3) * \\  & (677.4 - 677.4) + (414.3 + 414.3) * (677.4 - 716.8) + (414.3 + 260.4) * (716.8 - 716.8) + (260.4 + 260.4) * (716.8 - 916.8) + (260.4 + 192.3) * (916.8 - 916.8) + (192.3 + 192.3) * (916.8 - 940) + \\  & (192.3 + 126.8) * (940 - 940) + (126.8 + 126.8) * (940 - 916.8) + (126.8 + 73.7) * (916.8 - 916.8) + (73.7 + 73.7) * (916.8 - 837.6) + (73.7 + -74.7) * (837.6 - 837.6) + (-74.7 + -74.7) * (837.6 - 626.9) \\  & + (-74.7 + -99.2) * (626.9 - 626.9) + (-99.2 + -99.2) * (626.9 - 463.9) + (-99.2 + -74.7) * (463.9 - 463.9) + (-74.7 + -74.7) * (463.9 - 385.6) + (-74.7 + 81.6) * (385.6 - 385.6) + (81.6 + 81.6) * (385.6 - 129.6) + (81.6 + 129.8) * (129.6 - 81.3) + (129.8 + 237.2) * (81.3 - 81.3) + (237.2 + 289.9) * \\  & (81.3 - 133.6) + (289.9 + 289.9) * (133.6 - 267.9) * 0.5 * 0.00694  \end{aligned}  $
GARAGE (Non-living area)	1266	$  \begin{aligned}  & -((779.3 + 779.3) * (703.3 - 709.3) + (779.3 + 923) * (709.3 - 709.3) + (923 + 923) * (709.3 - 746.9) + (923 + 1022.4) * (746.9 - 746.9) + (1022.4 + 1022.4) * (746.9 - 709.3) + (1022.4 + 1055) * \\  & (709.3 - 709.3) + (1055 + 1055) * (709.3 - 703.3) + (1055 + 1092.5) * (703.3 - 703.3) + (1092.5 + 1092.5) * (703.3 - 919.5) + (1092.5 + 1061) * (919.5 - 919.5) + (1061 + 1061) * (919.5 - 1078.6) \\  & + (1061 + 1041.8) * (1078.6 - 1078.6) + (1041.8 + 1041.8) * (1078.6 - 1238.8) + (1041.8 + 950.5) * (1238.8 - 1238.8) + (950.5 + 950.5) * (1238.8 - 1262.8) + (950.5 + 857.1) * (1262.8 - 1262.8) + \\  & (857.1 + 857.1) * (1262.8 - 1239.6) + (857.1 + 754.1) * (1239.6 - 1239.6) + (754.1 + 754.1) * (1239.6 - 1078.6) + (754.1 + 725.9) * (1078.6 - 1078.6) + (725.9 + 725.9) * (1078.6 - 919.5) + \\  & (725.9 + 694.3) * (919.5 - 919.5) + (694.3 + 694.3) * (919.5 - 709.3) + (694.3 + 705.2) * (709.3 - 709.3) + (705.2 + 705.2) * (709.3 - 703.3) + (705.2 + 779.3) * (703.3 - 703.3) * 0.5 * 0.00694  \end{aligned}  $
WINE CELLAR (Non-living area)	55	$  \begin{aligned}  & -((775.3 + 775.3) * (582.5 - 703.3) + (775.3 + 709.2) * (703.3 - 703.3) + (709.2 + 709.2) * (703.3 - 582.5) + (709.2 + 775.3) * (582.5 - 582.5)) * 0.5 * 0.00694  \end{aligned}  $