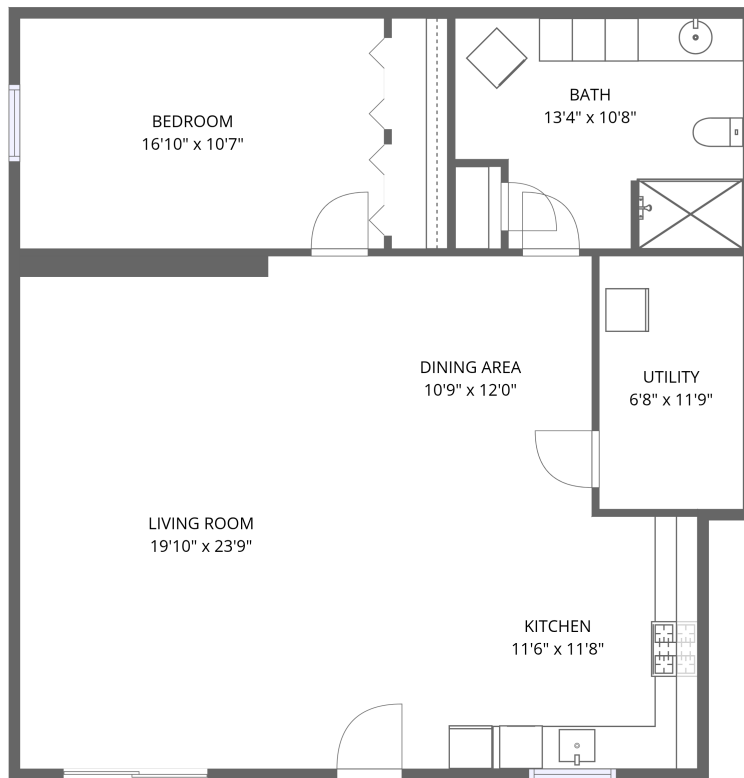


Home data report

**10257 State Route 31, Galen, Clyde, Wayne County, New York,
United States, 14433, Downstairs Unit**



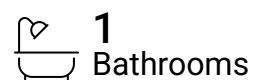
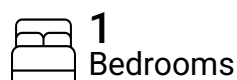
1st floor

Total Area: 1057 sq. ft

1st Floor: 1057 sq. ft

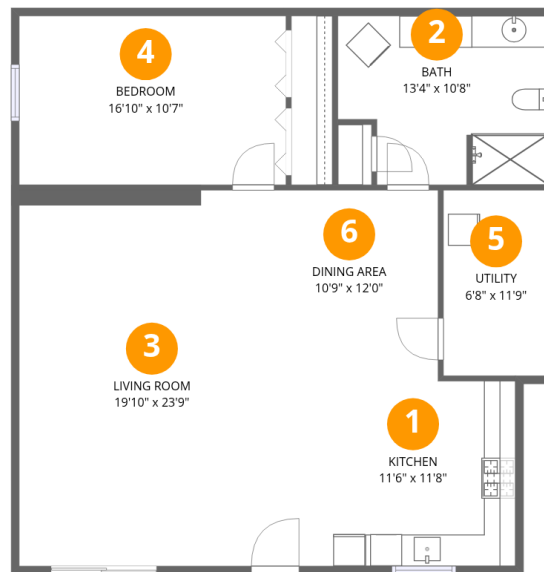
Excluded: Utility 78 sq. ft, Walls: 0 sq. ft

Property summary



Home data report

10257 State Route 31, Galen, Clyde, Wayne County, New York, United States, 14433, Downstairs Unit



Room dimensions

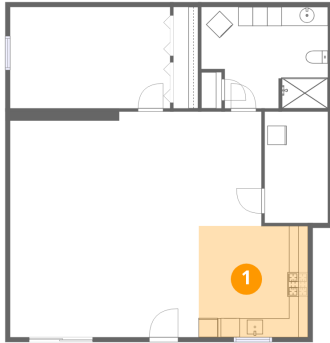
Floor 1

Total:1057sqft Excluded: 78sqft

#		Dimensions	sqft	Counted as living area
1	Kitchen	11'6" x 11'8"	134 sq. ft	Yes
2	Bath	13'4" x 10'8"	142 sq. ft	Yes
3	Living Room	19'10" x 23'9"	471 sq. ft	Yes
4	Bedroom	16'10" x 10'7"	179 sq. ft	Yes
5	Utility	6'8" x 11'9"	78 sq. ft	No
6	Dining Area	10'9" x 12'0"	129 sq. ft	Yes

10257 State Route 31, Galen, Clyde, Wayne County, New York,
United States, 14433, Downstairs Unit

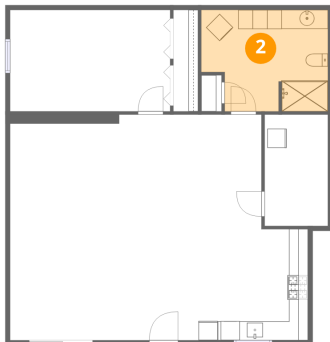
1 Floor 1 - Kitchen



Dimensions: 11'6" x 11'8"
Area: 134 sq. ft
Counted as living area: Yes

Heated: Yes
Finished: Yes
Enclosed: Yes
Contiguous: Yes
Permitted: Yes
Wet space: No
Addition: No
Conversion: No

2 Floor 1 - Bath

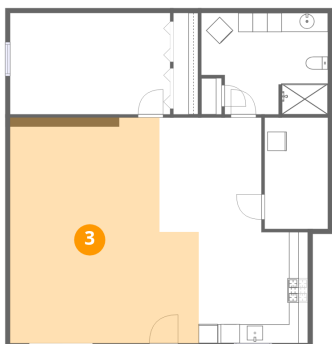


Dimensions: 13'4" x 10'8"
Area: 142 sq. ft
Counted as living area: Yes

Heated: Yes
Finished: Yes
Enclosed: Yes
Contiguous: Yes
Permitted: Yes
Wet space: Yes
Addition: No
Conversion: No

10257 State Route 31, Galen, Clyde, Wayne County, New York, United States, 14433, Downstairs Unit

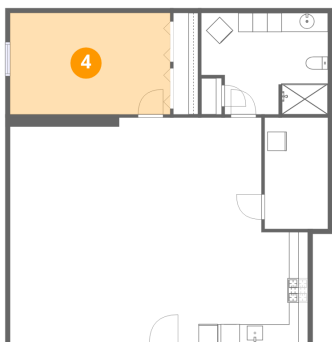
3 Floor 1 - Living Room



Dimensions: 19'10" x 23'9"
Area: 471 sq. ft
Counted as living area: Yes

Heated: Yes
Finished: Yes
Enclosed: Yes
Contiguous: Yes
Permitted: Yes
Wet space: No
Addition: No
Conversion: No

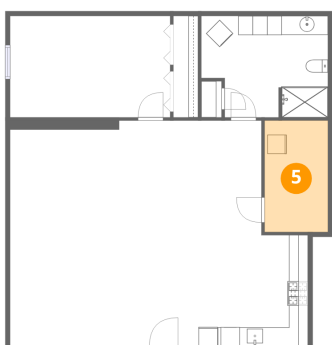
4 Floor 1 - Bedroom



Dimensions: 16'10" x 10'7"
Area: 179 sq. ft
Counted as living area: Yes

Heated: Yes
Finished: Yes
Enclosed: Yes
Contiguous: Yes
Permitted: Yes
Wet space: No
Addition: No
Conversion: No

5 Floor 1 - Utility



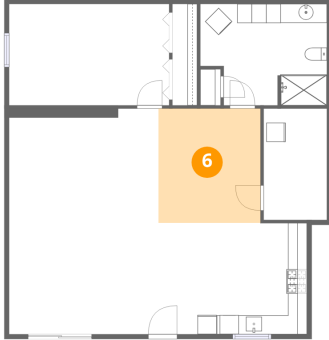
Dimensions: 6'8" x 11'9"
Area: 78 sq. ft
Counted as living area: No

Heated: Yes
Finished: No
Enclosed: Yes
Contiguous: Yes
Permitted: Yes
Wet space: No
Addition: No
Conversion: No

Home data report

10257 State Route 31, Galen, Clyde, Wayne County, New York,
United States, 14433, Downstairs Unit

6 Floor 1 - Dining Area



Dimensions: 10'9" x 12'0"
Area: 129 sq. ft
Counted as living area: Yes

Heated: Yes
Finished: Yes
Enclosed: Yes
Contiguous: Yes
Permitted: Yes
Wet space: No
Addition: No
Conversion: No