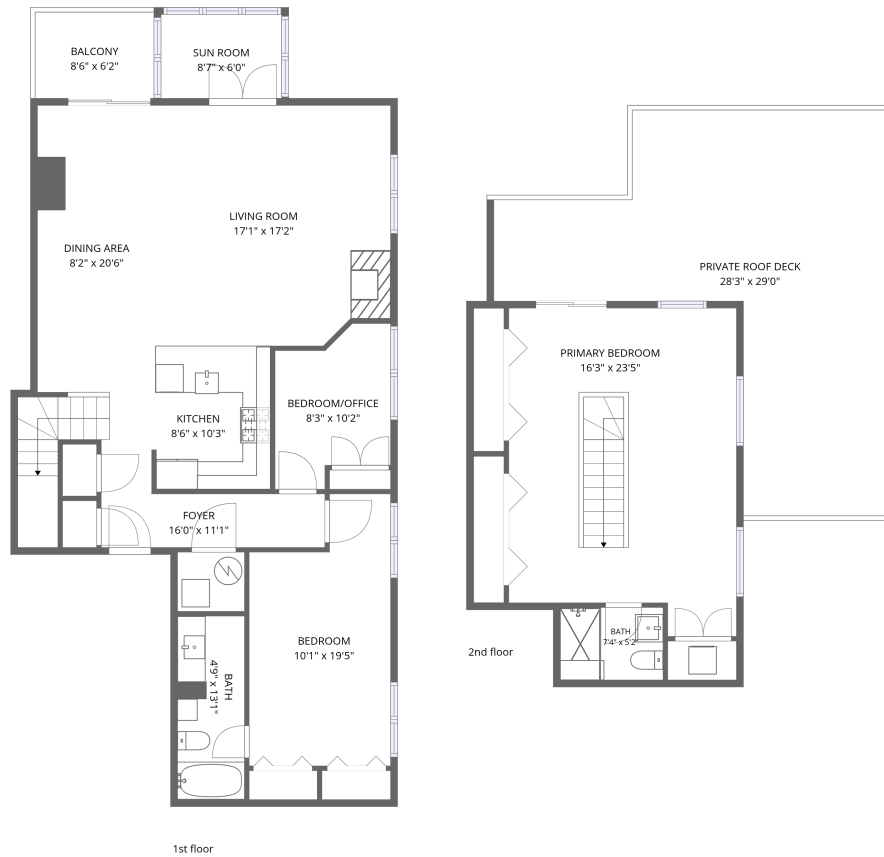


Home data report

2525 North Sheffield Avenue, Sheffield & DePaul, Chicago, Cook County, Illinois, United States, 60614, 4A

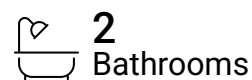


Total Area: 1607 sq. ft

1st Floor: 1142 sq. ft, 2nd Floor: 465 sq. ft

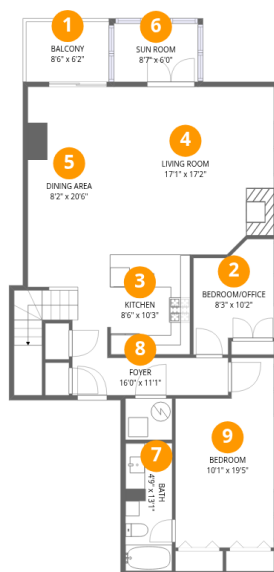
Excluded: Balcony 52 sq. ft, Private roof deck 483 sq. ft, Walls: 0 sq. ft

Property summary



Home data report

2525 North Sheffield Avenue, Sheffield & DePaul, Chicago, Cook County, Illinois, United States, 60614, 4A



Room dimensions

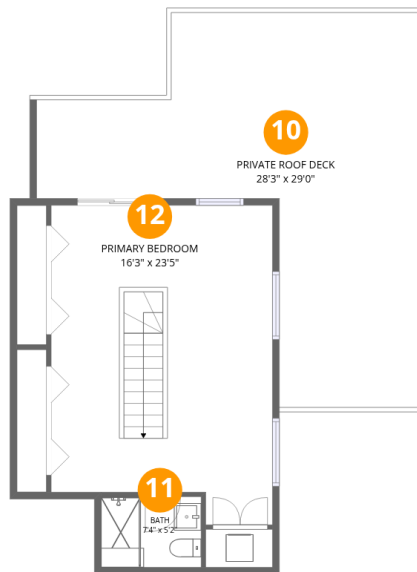
Floor 1

Total:1142sqft Excluded: 52sqft

#		Dimensions	sqft	Counted as living area
1	Balcony	8'6" x 6'2"	52 sq. ft	No
2	Bedroom/Office	8'3" x 10'2"	81 sq. ft	Yes
3	Kitchen	8'6" x 10'3"	86 sq. ft	Yes
4	Living Room	17'1" x 17'2"	286 sq. ft	Yes
5	Dining Area	8'2" x 20'6"	167 sq. ft	Yes
6	Sun Room	8'7" x 6'0"	52 sq. ft	Yes
7	Bath	4'9" x 13'1"	63 sq. ft	Yes
8	Foyer	16'0" x 11'1"	128 sq. ft	Yes
9	Bedroom	10'1" x 19'5"	172 sq. ft	Yes

Home data report

2525 North Sheffield Avenue, Sheffield & DePaul, Chicago, Cook County, Illinois, United States, 60614, 4A



Room dimensions

Floor 2

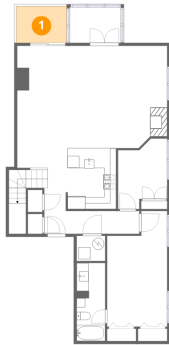
Total:465sqft

Excluded: 483sqft

#		Dimensions	sqft	Counted as living area
10	Private Roof Deck	28'3" x 29'0"	483 sq. ft	No
11	Bath	7'4" x 5'2"	38 sq. ft	Yes
12	Primary Bedroom	16'3" x 23'5"	354 sq. ft	Yes

2525 North Sheffield Avenue, Sheffield & DePaul, Chicago, Cook County, Illinois, United States, 60614, 4A

1 Floor 1 - Balcony



Dimensions: 8'6" x 6'2"
Area: 52 sq. ft
Counted as living area: No

Heated: No
Finished: No
Enclosed: No
Contiguous: Yes
Permitted: Yes
Wet space: No
Addition: No
Conversion: No

2 Floor 1 - Bedroom/Office



Dimensions: 8'3" x 10'2"
Area: 81 sq. ft
Counted as living area: Yes

Heated: Yes
Finished: Yes
Enclosed: Yes
Contiguous: Yes
Permitted: Yes
Wet space: No
Addition: No
Conversion: No

3 Floor 1 - Kitchen



Dimensions: 8'6" x 10'3"
Area: 86 sq. ft
Counted as living area: Yes

Heated: Yes
Finished: Yes
Enclosed: Yes
Contiguous: Yes
Permitted: Yes
Wet space: No
Addition: No
Conversion: No

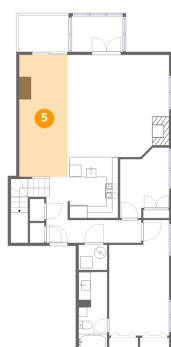
4 Floor 1 - Living Room



Dimensions: 17'1" x 17'2"
Area: 286 sq. ft
Counted as living area: Yes

Heated: Yes
Finished: Yes
Enclosed: Yes
Contiguous: Yes
Permitted: Yes
Wet space: No
Addition: No
Conversion: No

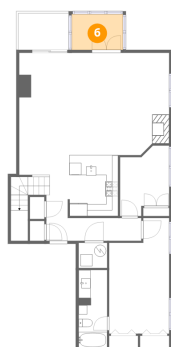
5 Floor 1 - Dining Area



Dimensions: 8'2" x 20'6"
Area: 167 sq. ft
Counted as living area: Yes

Heated: Yes
Finished: Yes
Enclosed: Yes
Contiguous: Yes
Permitted: Yes
Wet space: No
Addition: No
Conversion: No

6 Floor 1 - Sun Room



Dimensions: 8'7" x 6'0"
Area: 52 sq. ft
Counted as living area: Yes

Heated: Yes
Finished: Yes
Enclosed: Yes
Contiguous: Yes
Permitted: Yes
Wet space: No
Addition: No
Conversion: No

7 Floor 1 - Bath



Dimensions: 4'9" x 13'1"
Area: 63 sq. ft
Counted as living area: Yes

Heated: Yes
Finished: Yes
Enclosed: Yes
Contiguous: Yes
Permitted: Yes
Wet space: Yes
Addition: No
Conversion: No

8 Floor 1 - Foyer



Dimensions: 16'0" x 11'1"
Area: 128 sq. ft
Counted as living area: Yes

Heated: Yes
Finished: Yes
Enclosed: Yes
Contiguous: Yes
Permitted: Yes
Wet space: No
Addition: No
Conversion: No

2525 North Sheffield Avenue, Sheffield & DePaul, Chicago, Cook County, Illinois, United States, 60614, 4A

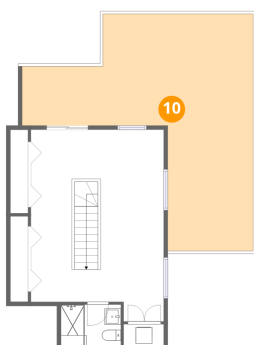
9 Floor 1 - Bedroom



Dimensions: 10'1" x 19'5"
Area: 172 sq. ft
Counted as living area: Yes

Heated: Yes
Finished: Yes
Enclosed: Yes
Contiguous: Yes
Permitted: Yes
Wet space: No
Addition: No
Conversion: No

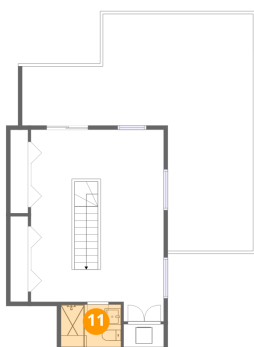
10 Floor 2 - Private Roof Deck



Dimensions: 28'3" x 29'0"
Area: 483 sq. ft
Counted as living area: No

Heated: No
Finished: No
Enclosed: No
Contiguous: Yes
Permitted: Yes
Wet space: No
Addition: No
Conversion: No

11 Floor 2 - Bath

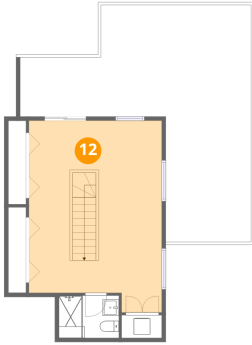


Dimensions: 7'4" x 5'2"
Area: 38 sq. ft
Counted as living area: Yes

Heated: Yes
Finished: Yes
Enclosed: Yes
Contiguous: Yes
Permitted: Yes
Wet space: Yes
Addition: No
Conversion: No

2525 North Sheffield Avenue, Sheffield & DePaul, Chicago, Cook County, Illinois, United States, 60614, 4A

12 Floor 2 - Primary Bedroom



Dimensions: 16'3" x 23'5"

Area: 354 sq. ft

Counted as living area: Yes

Heated: Yes

Finished: Yes

Enclosed: Yes

Contiguous: Yes

Permitted: Yes

Wet space: No

Addition: No

Conversion: No