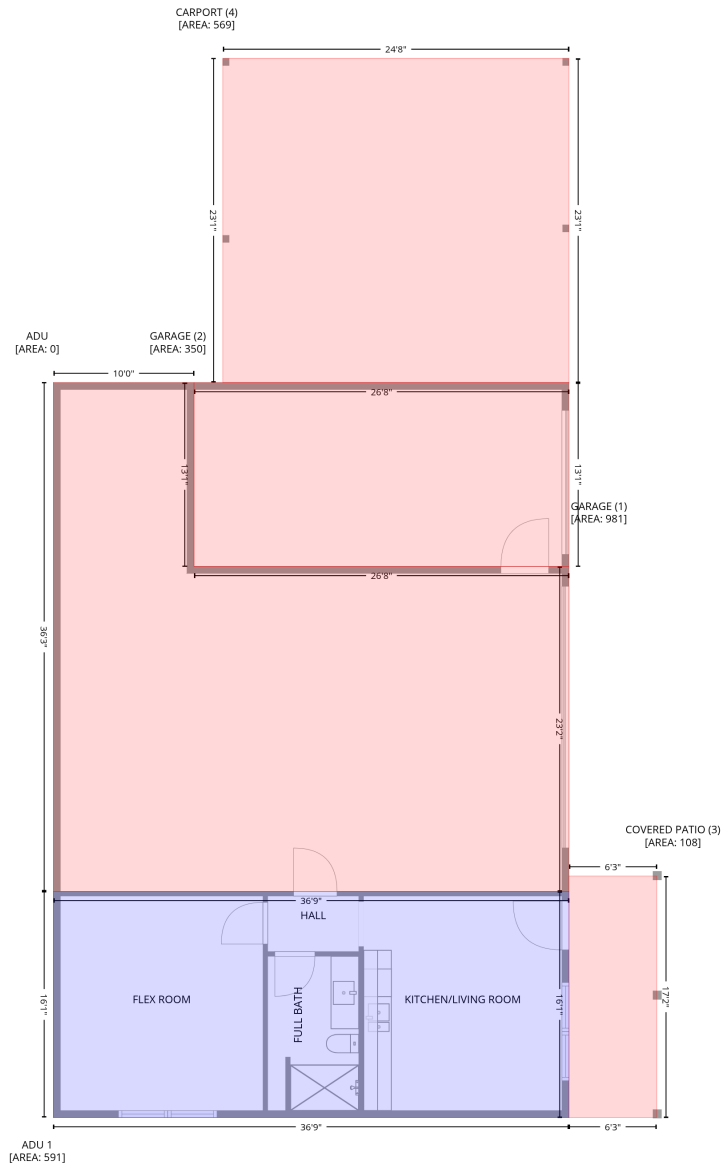


2335 Twin Acres Road, Clayton, Johnston County, North Carolina, United States, 27520

Gross Living Area: 3289 sq. ft

Level 1



Space	Area (sq. ft)	Calculation
ADU 1 (Living area)	591	$-\left((527 + 527) * (788 - 981) + (527 + 86) * (981 - 981) + (86 + 86) * (981 - 788) + (86 + 527) * (788 - 788)\right) * 0.5 * 0.00694$
GARAGE (Non-living area)	981	$-\left((206.3 + 206.3) * (353.4 - 510.5) + (206.3 + 526.8) * (510.5 - 510.5) + (526.8 + 526.8) * (510.5 - 788.2) + (526.8 + 86.1) * (788.2 - 788.2) + (86.1 + 86.1) * (788.2 - 353.4) + (86.1 + 206.3) * (353.4 - 353.4)\right) * 0.5 * 0.00694$
GARAGE (Non-living area)	350	$-\left((526.8 + 526.8) * (353.4 - 510.5) + (526.8 + 206.3) * (510.5 - 510.5) + (206.3 + 206.3) * (510.5 - 353.4) + (206.3 + 526.8) * (353.4 - 353.4)\right) * 0.5 * 0.00694$

2335 Twin Acres Road, Clayton, Johnston County, North Carolina, United States, 27520

Gross Living Area: 3289 sq. ft

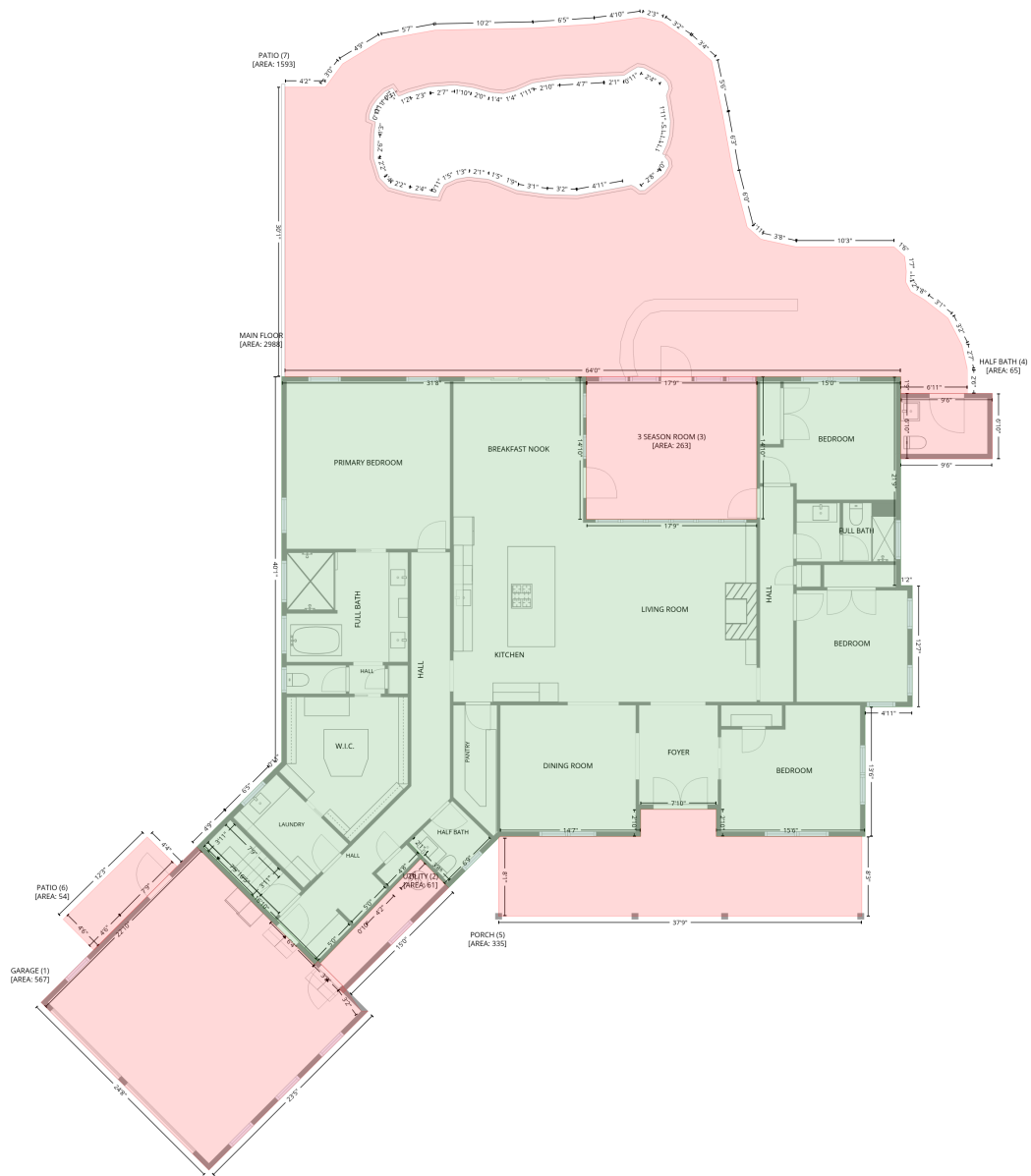
Level 1

Space	Area (sq. ft)	Calculation <small>Coordinate Polygon Area Algorithm using inches</small>
COVERED PATIO (Non-living area)	108	$-((601.8 + 601.8) * (775.1 - 981.5) + (601.8 + 526.8) * (981.5 - 981.5) + (526.8 + 526.8) * (981.5 - 775.1) + (526.8 + 601.8) * (775.1 - 775.1)) * 0.5 * 0.00694$
CARPORT (Non-living area)	569	$-((526.8 + 526.8) * (76.5 - 353.4) + (526.8 + 230.9) * (353.4 - 353.4) + (230.9 + 230.9) * (353.4 - 76.5) + (230.9 + 526.8) * (76.5 - 76.5)) * 0.5 * 0.00694$

2335 Twin Acres Road, Clayton, Johnston County, North Carolina, United States, 27520

Gross Living Area: 3289 sq. ft

Level 2



2335 Twin Acres Road, Clayton, Johnston County, North Carolina, United States, 27520

Gross Living Area: 3289 sq. ft

Level 2

Space	Area (sq. ft)	Calculation <small>Coordinate Polygon Area Algorithm using inches</small>
MAIN FLOOR (Living area)	2988	$-\left((1482.9 + 1536.9) * (1990.7 - 2044.6) + (1536.9 + 1532.6) * (2044.6 - 2048.9) + (1532.6 + 1389.8) * (2048.9 - 1906.3) + (1389.8 + 1385.5) * (1906.3 - 1902.1) + (1385.5 + 1426.1) * (1902.1 - 1861.5) + (1426.1 + 1480.7) * (1861.5 - 1807.1) + (1480.7 + 1480.7) * (1807.1 - 1806.9) + (1480.7 + 1483.5) * (1806.9 - 1804.1) + (1483.5 + 1483.6) * (1804.1 - 1804) + (1483.6 + 1491.6) * (1804 - 1795.9) + (1491.6 + 1491.6) * (1795.9 - 1315.3) + (1491.6 + 1871.7) * (1315.3 - 1315.3) + (1871.7 + 1871.7) * (1315.3 - 1493.2) + (1871.7 + 2084.2) * (1493.2 - 1493.2) + (2084.2 + 2084.2) * (1493.2 - 1315.3) + (2084.2 + 2263.8) * (1315.3 - 1315.3) + (2263.8 + 2263.8) * (1315.3 - 1575.9) + (2263.8 + 2278.2) * (1575.9 - 1575.9) + (2278.2 + 2278.2) * (1575.9 - 1727.2) + (2278.2 + 2219.3) * (1727.2 - 1727.2) + (2219.3 + 2219.3) * (1727.2 - 1889) + (2219.3 + 2033.8) * (1889 - 1889) + (2033.8 + 2033.8) * (1889 - 1855.1) + (2033.8 + 1939.4) * (1855.1 - 1855.1) + (1939.4 + 1939.4) * (1855.1 - 1889) + (1939.4 + 1764.2) * (1889 - 1889) + (1764.2 + 1760.2) * (1889 - 1892.9) + (1760.2 + 1760) * (1892.9 - 1893.1) + (1760 + 1757.1) * (1893.1 - 1896.1) + (1757.1 + 1699.9) * (1896.1 - 1953.1) + (1699.9 + 1695.7) * (1953.1 - 1948.8) + (1695.7 + 1695.7) * (1948.8 - 1948.8) + (1695.7 + 1664.8) * (1948.8 - 1917.2) + (1664.8 + 1667.7) * (1917.2 - 1914.4) + (1667.7 + 1650.5) * (1914.4 - 1896.5) + (1650.5 + 1667.6) * (1896.5 - 1914.4) + (1667.6 + 1628.8) * (1914.4 - 1954.7) + (1628.8 + 1626.1) * (1954.7 - 1957.4) + (1626.1 + 1626.1) * (1957.4 - 1957.5) + (1626.1 + 1584.4) * (1957.5 - 2000.8) + (1584.4 + 1581.5) * (2000.8 - 2003.8) + (1581.5 + 1539.8) * (2003.8 - 2047.2) + (1539.8 + 1536.9) * (2047.2 - 2044.5) + (1536.9 + 1485.8) * (2044.5 - 1993.3) + (1485.8 + 1483.1) * (1993.3 - 1990.6) + (1483.1 + 1394.1) * (1990.6 - 1902.1) + (1394.1 + 1482.9) * (1902.1 - 1990.7)) * 0.5 * 0.00694$
GARAGE (Non-living area)	567	$-\left((1385.5 + 1389.8) * (1902.1 - 1906.3) + (1389.8 + 1532.6) * (1906.3 - 2048.9) + (1532.6 + 1536.9) * (2048.9 - 2044.6) + (1536.9 + 1568.3) * (2044.6 - 2075.9) + (1568.3 + 1590.8) * (2075.9 - 2107) + (1590.8 + 1599.3) * (2107 - 2107) + (1599.3 + 1400.8) * (2107 - 2305.5) + (1400.8 + 1191.4) * (2305.5 - 2096.1) + (1191.4 + 1385.5) * (2096.1 - 1902.1)) * 0.5 * 0.00694$
UTILITY (Non-living area)	61	$-\left((1664.8 + 1695.7) * (1917.2 - 1948.8) + (1695.7 + 1699.9) * (1948.8 - 1953.1) + (1699.9 + 1572.5) * (1953.1 - 2080.2) + (1572.5 + 1568.3) * (2080.2 - 2084.4) + (1568.3 + 1564) * (2084.4 - 2080.2) + (1564 + 1568.1) * (2080.2 - 2076) + (1568.1 + 1539.8) * (2076 - 2047.2) + (1539.8 + 1581.5) * (2047.2 - 2003.8) + (1581.5 + 1584.4) * (2003.8 - 2000.8) + (1584.4 + 1591.5) * (2000.8 - 1993.3) + (1591.5 + 1626.1) * (1993.3 - 1957.5) + (1626.1 + 1628.8) * (1957.5 - 1954.7) + (1628.8 + 1634.3) * (1954.7 - 1948.8) + (1634.3 + 1664.8) * (1948.8 - 1917.2)) * 0.5 * 0.00694$
3 SEASON ROOM (Non-living area)	263	$-\left((2084.2 + 2084.2) * (1315.3 - 1493.2) + (2084.2 + 1871.7) * (1493.2 - 1493.2) + (1871.7 + 1871.7) * (1493.2 - 1315.3) + (1871.7 + 2084.2) * (1315.3 - 1315.3)) * 0.5 * 0.00694$
HALF BATH (Non-living area)	65	$-\left((2378 + 2378) * (1336.1 - 1417.7) + (2378 + 2263.8) * (1417.7 - 1417.7) + (2263.8 + 2263.8) * (1417.7 - 1336.1) + (2263.8 + 2378) * (1336.1 - 1336.1)) * 0.5 * 0.00694$
PORCH (Non-living area)	335	$-\left((2033.8 + 2033.8) * (1855.1 - 1889) + (2033.8 + 2215.3) * (1889 - 1889) + (2215.3 + 2215.3) * (1889 - 1988.5) + (2215.3 + 1762.1) * (1988.5 - 1988.5) + (1762.1 + 1762.1) * (1988.5 - 1891) + (1762.1 + 1764.2) * (1891 - 1889) + (1764.2 + 1939.4) * (1889 - 1889) + (1939.4 + 1939.4) * (1889 - 1855.1) + (1939.4 + 2033.8) * (1855.1 - 1855.1)) * 0.5 * 0.00694$
PATIO (Non-living area)	54	$-\left((1323.8 + 1361) * (1889.6 - 1926) + (1361 + 1295.3) * (1926 - 1992.5) + (1295.3 + 1257.4) * (1992.5 - 2030.9) + (1257.4 + 1219) * (2030.9 - 1992.5) + (1219 + 1323.8) * (1992.5 - 1889.6)) * 0.5 * 0.00694$

2335 Twin Acres Road, Clayton, Johnston County, North Carolina, United States, 27520

Gross Living Area: 3289 sq. ft

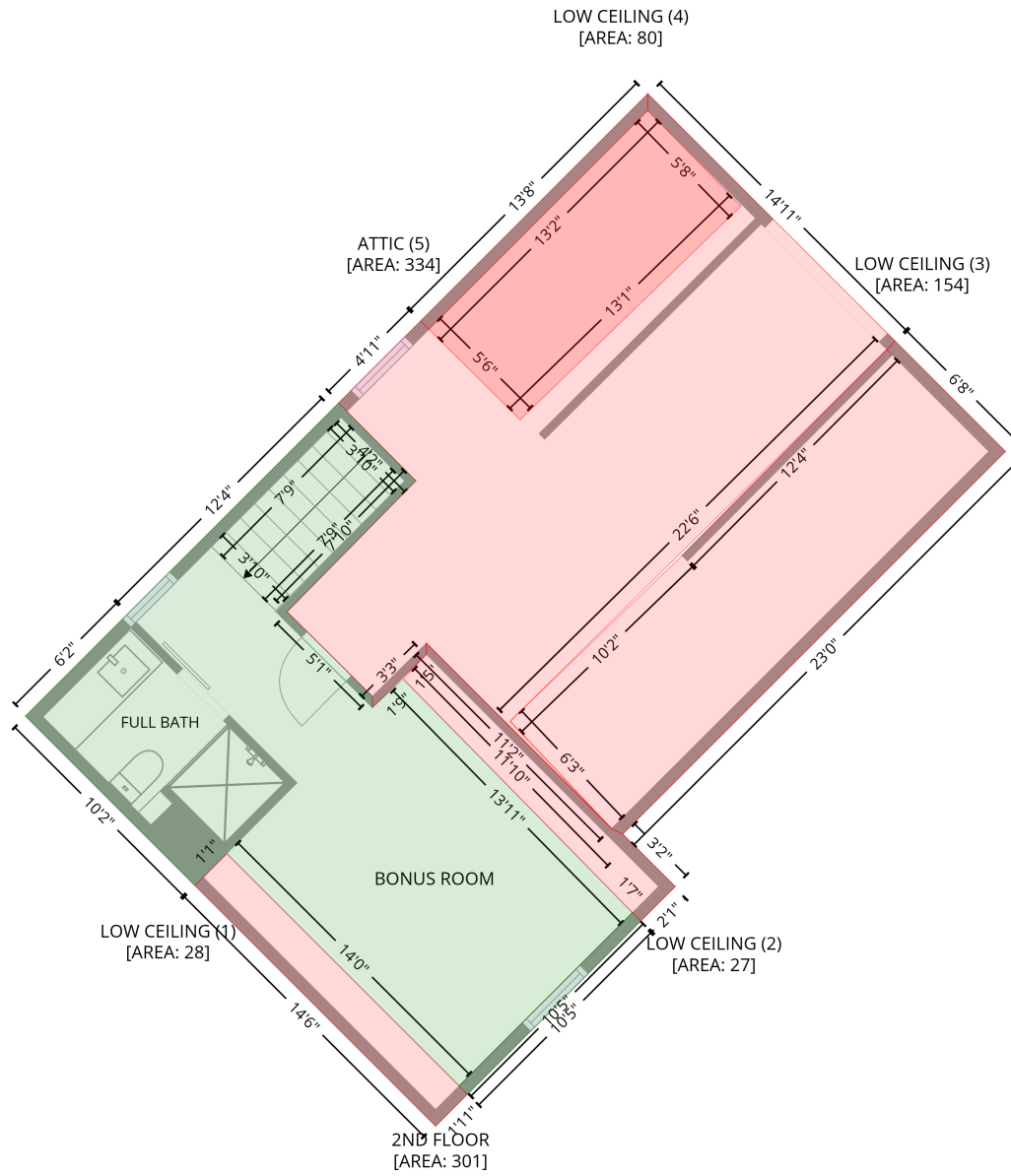
Level 2

Space	Area (sq. ft)	Calculation <small>Coordinate Polygon Area Algorithm using inches</small>
PATIO (Non-living area)	1593	$\begin{aligned} & -((1939.9 + 1966) * (866.9 - 872.6) + (1966 + 1997.8) * (872.6 - 894.2) + (1997.8 + 2027.7) * \\ & (894.2 - 921) + (2027.7 + 2041) * (921 - 985.2) + (2041 + 2054.4) * (985.2 - 1059) + (2054.4 + \\ & 2072.2) * (1059 - 1128.4) + (2072.2 + 2089.4) * (1128.4 - 1143.6) + (2089.4 + 2132.7) * (1143.6 - \\ & 1153.2) + (2132.7 + 2255.5) * (1153.2 - 1153.2) + (2255.5 + 2268.8) * (1153.2 - 1165.3) + \\ & (2268.8 + 2270.7) * (1165.3 - 1183.7) + (2270.7 + 2270.1) * (1183.7 - 1197.1) + (2270.1 + \\ & 2276.4) * (1197.1 - 1209.2) + (2276.4 + 2293.6) * (1209.2 - 1219.3) + (2293.6 + 2322.9) * \\ & (1219.3 - 1242.3) + (2322.9 + 2340.1) * (1242.3 - 1276) + (2340.1 + 2347.1) * (1276 - 1306.5) + \\ & (2347.1 + 2347.1) * (1306.5 - 1336.1) + (2347.1 + 2263.8) * (1336.1 - 1336.1) + (2263.8 + \\ & 2263.8) * (1336.1 - 1315.3) + (2263.8 + 1495.6) * (1315.3 - 1315.3) + (1495.6 + 1495.6) * \\ & (1315.3 - 953.9) + (1495.6 + 1546) * (953.9 - 953.9) + (1546 + 1567.7) * (953.9 - 924.8) + \\ & (1567.7 + 1616.7) * (924.8 - 894.9) + (1616.7 + 1682.8) * (894.9 - 882.8) + (1682.8 + 1805) * \\ & (882.8 - 880.2) + (1805 + 1882) * (880.2 - 875.1) + (1882 + 1939.9) * (875.1 - 866.9) * 0.5 * \\ & 0.00694 + -((1935.9 + 1928.2) * (928.5 - 932.9) + (1928.2 + 1918.7) * (932.9 - 939.1) + (1918.7 + \\ & 1893.3) * (939.1 - 940.2) + (1893.3 + 1838) * (940.2 - 943.5) + (1838 + 1804.6) * (943.5 - 948.7) \\ & + (1804.6 + 1783.7) * (948.7 - 957.8) + (1783.7 + 1768.3) * (957.8 - 961.9) + (1768.3 + 1752.5) * \\ & (961.9 - 960.4) + (1752.5 + 1729.4) * (960.4 - 954.2) + (1729.4 + 1707.4) * (954.2 - 951.2) + \\ & (1707.4 + 1676.2) * (951.2 - 953.4) + (1676.2 + 1650.4) * (953.4 - 960.2) + (1650.4 + 1637.5) * \\ & (960.2 - 965.3) + (1637.5 + 1629.9) * (965.3 - 954.8) + (1629.9 + 1620.3) * (954.8 - 959.3) + \\ & (1620.3 + 1610.8) * (959.3 - 968.8) + (1610.8 + 1604.3) * (968.8 - 978) + (1604.3 + 1600.7) * \\ & (978 - 988.6) + (1600.7 + 1600.5) * (988.6 - 994) + (1600.5 + 1608.6) * (994 - 997.3) + (1608.6 + \\ & 1606.5) * (997.3 - 1012.5) + (1606.5 + 1606) * (1012.5 - 1042.8) + (1606 + 1613.7) * (1042.8 - \\ & 1067.4) + (1613.7 + 1625.1) * (1067.4 - 1079.3) + (1625.1 + 1650) * (1079.3 - 1086.1) + (1650 + \\ & 1677.9) * (1086.1 - 1090.2) + (1677.9 + 1686.9) * (1090.2 - 1091.3) + (1686.9 + 1689.1) * \\ & (1091.3 - 1085.3) + (1689.1 + 1694.5) * (1085.3 - 1075.7) + (1694.5 + 1709.6) * (1075.7 - \\ & 1068.7) + (1709.6 + 1724.3) * (1068.7 - 1066.1) + (1724.3 + 1749.2) * (1066.1 - 1068.9) + \\ & (1749.2 + 1765.4) * (1068.9 - 1074.8) + (1765.4 + 1785.2) * (1074.8 - 1082.9) + (1785.2 + \\ & 1822.2) * (1082.9 - 1088) + (1822.2 + 1860) * (1088 - 1089.1) + (1860 + 1918.3) * (1089.1 - \\ & 1078.5) + (1918.3 + 1927.8) * (1078.5 - 1076.3) + (1927.8 + 1932.2) * (1076.3 - 1078.5) + \\ & (1932.2 + 1938.4) * (1078.5 - 1083.2) + (1938.4 + 1944.3) * (1083.2 - 1082.9) + (1944.3 + \\ & 1968.9) * (1082.9 - 1062.3) + (1968.9 + 1974.8) * (1062.3 - 1052.1) + (1974.8 + 1973.8) * \\ & (1052.1 - 1045.8) + (1973.8 + 1969.5) * (1045.8 - 1040.8) + (1969.5 + 1970.5) * (1040.8 - 1039) \\ & + (1970.5 + 1966.7) * (1039 - 1037.4) + (1966.7 + 1972.2) * (1037.4 - 1025.7) + (1972.2 + \\ & 1975.5) * (1025.7 - 1013.2) + (1975.5 + 1976.6) * (1013.2 - 996.3) + (1976.6 + 1973.3) * (996.3 - \\ & 974) + (1973.3 + 1971.4) * (974 - 964.4) + (1971.4 + 1974.8) * (964.4 - 955.3) + (1974.8 + \\ & 1973.3) * (955.3 - 948.7) + (1973.3 + 1967.8) * (948.7 - 942.4) + (1967.8 + 1943.2) * (942.4 - \\ & 929.6) + (1943.2 + 1935.9) * (929.6 - 928.5)) * 0.5 * 0.00694 \end{aligned}$

2335 Twin Acres Road, Clayton, Johnston County, North Carolina, United States, 27520

Gross Living Area: 3289 sq. ft

Level 3



2335 Twin Acres Road, Clayton, Johnston County, North Carolina, United States, 27520

Gross Living Area: 3289 sq. ft

Level 3

Space	Area (sq. ft)	Calculation <small>Coordinate Polygon Area Algorithm using inches</small>
2ND FLOOR (Living area)	301	$-(1543.4 + 1547.6) * (2154.4 - 2158.7) + (1547.6 + 1459.2) * (2158.7 - 2247.1) + (1459.2 + 1455) * (2247.1 - 2242.9) + (1455 + 1543.4) * (2242.9 - 2154.4) * 0.5 * 0.00694 + -((1324.4 + 1320.1) * (2136.2 - 2140.6) + (1320.1 + 1233.6) * (2140.6 - 2054) + (1233.6 + 1285.8) * (2054 - 2001.8) + (1285.8 + 1390.6) * (2001.8 - 1897.2) + (1390.6 + 1390.5) * (1897.2 - 1897.1) + (1390.5 + 1393.3) * (1897.1 - 1894.3) + (1393.3 + 1393.4) * (1894.3 - 1894.3) + (1393.4 + 1397.6) * (1894.3 - 1898.4) + (1397.6 + 1397.6) * (1898.4 - 1898.5) + (1397.6 + 1432.8) * (1898.5 - 1933.9) + (1432.8 + 1367.1) * (1933.9 - 2000.8) + (1367.1 + 1410.6) * (2000.8 - 2044) + (1410.6 + 1410.6) * (2044 - 2049.6) + (1410.6 + 1426.5) * (2049.6 - 2035.2) + (1426.5 + 1543.3) * (2035.2 - 2154.3) + (1543.3 + 1454.9) * (2154.3 - 2242.8) + (1454.9 + 1336.4) * (2242.8 - 2124.3) + (1336.4 + 1327.2) * (2124.3 - 2133.4) + (1327.2 + 1324.4) * (2133.4 - 2136.2)) * 0.5 * 0.00694$
LOW CEILING (Non-living area)	28	$-(1336.4 + 1454.9) * (2124.3 - 2242.8) + (1454.9 + 1459.2) * (2242.8 - 2247.1) + (1459.2 + 1442.9) * (2247.1 - 2263.4) + (1442.9 + 1320.1) * (2263.4 - 2140.6) + (1320.1 + 1324.4) * (2140.6 - 2136.2) + (1324.4 + 1327.2) * (2136.2 - 2133.4) + (1327.2 + 1336.4) * (2133.4 - 2124.3) * 0.5 * 0.00694$
LOW CEILING (Non-living area)	27	$-(1438.2 + 1532.8) * (2016.8 - 2111.4) + (1532.8 + 1532.8) * (2111.4 - 2111.5) + (1532.8 + 1538.5) * (2111.5 - 2114.3) + (1538.5 + 1565.3) * (2114.3 - 2141) + (1565.3 + 1547.6) * (2141 - 2158.7) + (1547.6 + 1543.4) * (2158.7 - 2154.4) + (1543.4 + 1529.9) * (2154.4 - 2140.6) + (1529.9 + 1525.7) * (2140.6 - 2136.2) + (1525.7 + 1426.5) * (2136.2 - 2035.2) + (1426.5 + 1438.2) * (2035.2 - 2022.4) + (1438.2 + 1438.2) * (2022.4 - 2016.8) * 0.5 * 0.00694$
LOW CEILING (Non-living area)	154	$-(1677.5 + 1733.8) * (1862.7 - 1918.9) + (1733.8 + 1538.5) * (1918.9 - 2114.3) + (1538.5 + 1532.8) * (2114.3 - 2111.5) + (1532.8 + 1481) * (2111.5 - 2056.7) + (1481 + 1568.6) * (2056.7 - 1972) + (1568.6 + 1673.1) * (1972 - 1866.9) + (1673.1 + 1676) * (1866.9 - 1869.6) + (1676 + 1673.3) * (1869.6 - 1866.9) + (1673.3 + 1677.5) * (1866.9 - 1862.7) * 0.5 * 0.00694$
LOW CEILING (Non-living area)	80	$-(1551.2 + 1551.2) * (1736.4 - 1744.8) + (1551.2 + 1598.8) * (1744.8 - 1793.6) + (1598.8 + 1486.1) * (1793.6 - 1902.7) + (1486.1 + 1439.5) * (1902.7 - 1856.6) + (1439.5 + 1435.3) * (1856.6 - 1852.3) + (1435.3 + 1551.2) * (1852.3 - 1736.4) * 0.5 * 0.00694$
ATTIC (Non-living area)	334	$-(1551.2 + 1677.5) * (1736.4 - 1862.7) + (1677.5 + 1673.3) * (1862.7 - 1866.9) + (1673.3 + 1481) * (1866.9 - 2056.7) + (1481 + 1532.7) * (2056.7 - 2111.4) + (1532.7 + 1438.2) * (2111.4 - 2016.8) + (1438.2 + 1438.2) * (2016.8 - 2022.4) + (1438.2 + 1410.6) * (2022.4 - 2049.6) + (1410.6 + 1410.6) * (2049.6 - 2044) + (1410.6 + 1368.1) * (2044 - 2001.8) + (1368.1 + 1367.1) * (2001.8 - 2000.8) + (1367.1 + 1432.8) * (2000.8 - 1933.9) + (1432.8 + 1397.6) * (1933.9 - 1898.4) + (1397.6 + 1396.5) * (1898.4 - 1897.1) + (1396.5 + 1393.4) * (1897.1 - 1894.3) + (1393.4 + 1393.4) * (1894.3 - 1894.2) + (1393.4 + 1435.3) * (1894.2 - 1852.3) + (1435.3 + 1439.4) * (1852.3 - 1856.6) + (1439.4 + 1551.2) * (1856.6 - 1744.8) + (1551.2 + 1551.2) * (1744.8 - 1736.4) * 0.5 * 0.00694$