

Home report

3025 Bancroft Drive Southwest, South Roanoke, Roanoke,
Roanoke city, Virginia, United States, 24014





Total Area: 2245 sq. ft

Floor 1: 792 sq. ft, Floor 2: 710 sq. ft, Floor 3: 743 sq. ft

Excluded: Garage 507 sq. ft, Utility 82 sq. ft, Fireplace 11 sq. ft, Porch 171 sq. ft, Patio 671 sq. ft, Embeddedwindow 13 sq. ft, Walls: 226 sq. ft

Property summary

 **3** Floors

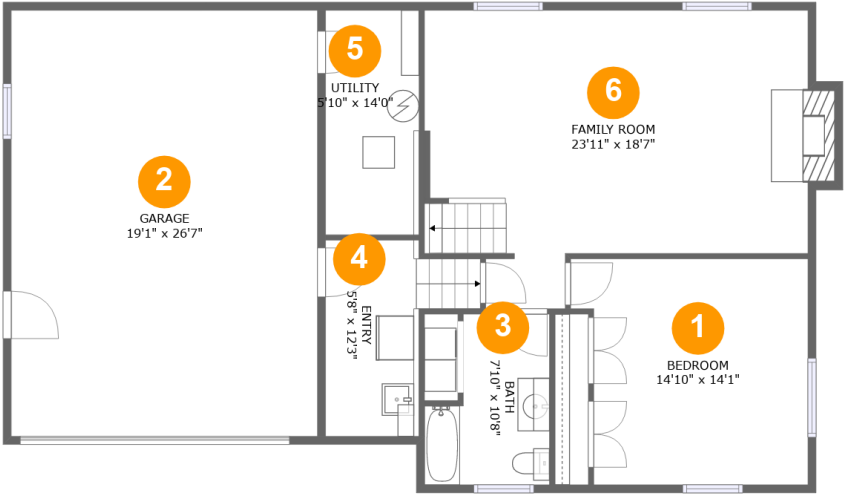
 **4** Bedrooms

 **3** Bathrooms

 **1** Garages

Home report

3025 Bancroft Drive Southwest, South Roanoke, Roanoke,
Roanoke city, Virginia, United States, 24014



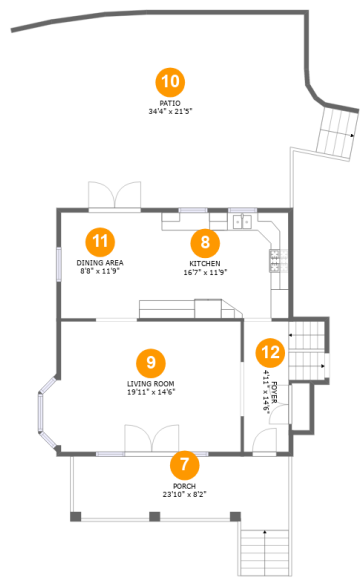
Room dimensions

Floor 1 Total:792sqft Excluded: 600sqft

#		Max Dimensions	sqft	Included
1	Bedroom	14'10" x 14'1"	193 sq. ft	Yes
2	Garage	19'1" x 26'7"	507 sq. ft	No
3	Bath	7'10" x 10'8"	69 sq. ft	Yes
4	Entry	5'8" x 12'3"	83 sq. ft	Yes
5	Utility	5'10" x 14'0"	82 sq. ft	No
6	Family Room	23'11" x 18'7"	388 sq. ft	Yes

Home report

3025 Bancroft Drive Southwest, South Roanoke, Roanoke,
Roanoke city, Virginia, United States, 24014



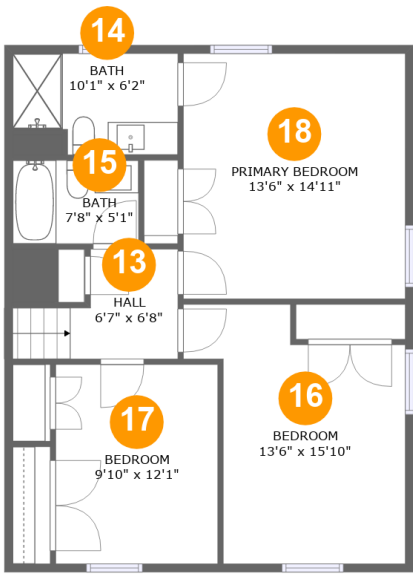
Room dimensions

Floor 2 Total:710sqft Excluded: 855sqft

#		Max Dimensions	sqft	Included
7	Porch	23'10" x 8'2"	171 sq. ft	No
8	Kitchen	16'7" x 11'9"	195 sq. ft	Yes
9	Living Room	19'11" x 14'6"	289 sq. ft	Yes
10	Patio	34'4" x 21'5"	670 sq. ft	No
11	Dining Area	8'8" x 11'9"	102 sq. ft	Yes
12	Foyer	4'11" x 14'6"	98 sq. ft	Yes

Home report

3025 Bancroft Drive Southwest, South Roanoke, Roanoke,
Roanoke city, Virginia, United States, 24014



Room dimensions

Floor 3 Total:743sqft Excluded: 0sqft

#		Max Dimensions	sqft	Included
13	Hall	6'7" x 6'8"	50 sq. ft	Yes
14	Bath	10'1" x 6'2"	57 sq. ft	Yes
15	Bath	7'8" x 5'1"	39 sq. ft	Yes
16	Bedroom	13'6" x 15'10"	166 sq. ft	Yes
17	Bedroom	9'10" x 12'1"	120 sq. ft	Yes
18	Primary Bedroom	13'6" x 14'11"	202 sq. ft	Yes

Home report

3025 Bancroft Drive Southwest, South Roanoke, Roanoke,
Roanoke city, Virginia, United States, 24014

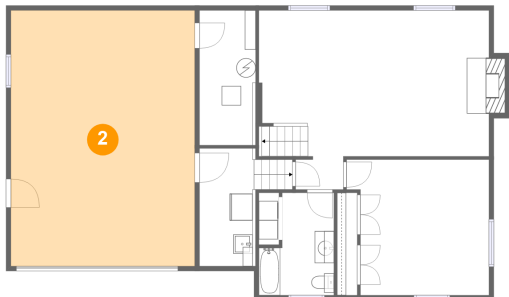
1 Floor 1 - Bedroom



Max Dimensions: 14'10" x 14'1"
Calculated Area: 193 sq. ft
Included: Yes

Heated: Yes
Finished: Yes
Enclosed: Yes
Contiguous: Yes
Permitted: Yes
Wet space: No
Addition: No
Conversion: No

2 Floor 1 - Garage

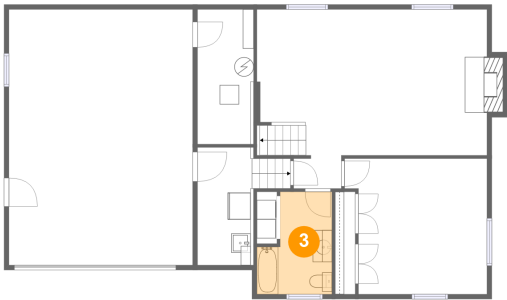


Max Dimensions: 19'1" x 26'7"
Calculated Area: 507 sq. ft
Included: No

Heated: No
Finished: No
Enclosed: Yes
Contiguous: Yes
Permitted: Yes
Wet space: No
Addition: No
Conversion: No

3025 Bancroft Drive Southwest, South Roanoke, Roanoke,
Roanoke city, Virginia, United States, 24014

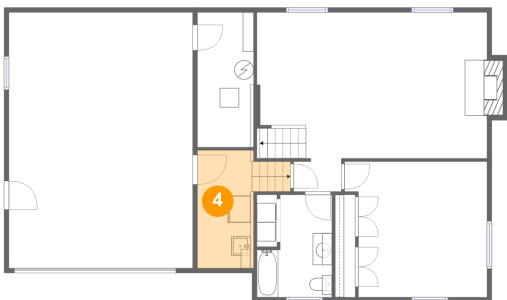
3 Floor 1 - Bath



Max Dimensions: 7'10" x 10'8"
Calculated Area: 69 sq. ft
Included: Yes

Heated: Yes
Finished: Yes
Enclosed: Yes
Contiguous: Yes
Permitted: Yes
Wet space: Yes
Addition: No
Conversion: No

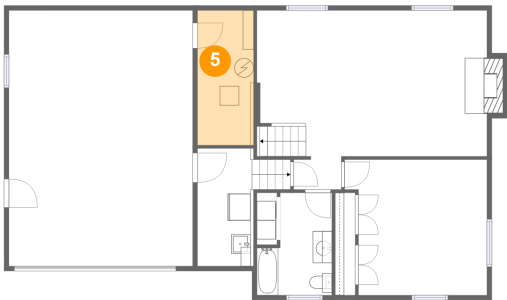
4 Floor 1 - Entry



Max Dimensions: 5'8" x 12'3"
Calculated Area: 83 sq. ft
Included: Yes

Heated: Yes
Finished: Yes
Enclosed: Yes
Contiguous: Yes
Permitted: Yes
Wet space: No
Addition: No
Conversion: No

5 Floor 1 - Utility

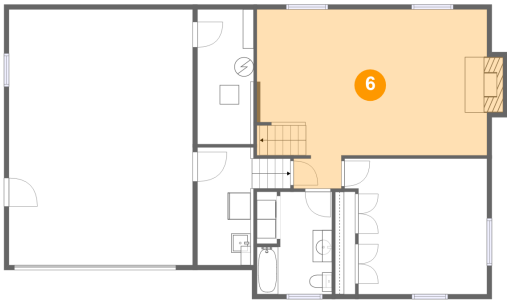


Max Dimensions: 5'10" x 14'0"
Calculated Area: 82 sq. ft
Included: No

Heated: Yes
Finished: No
Enclosed: Yes
Contiguous: Yes
Permitted: Yes
Wet space: No
Addition: No
Conversion: No

3025 Bancroft Drive Southwest, South Roanoke, Roanoke,
Roanoke city, Virginia, United States, 24014

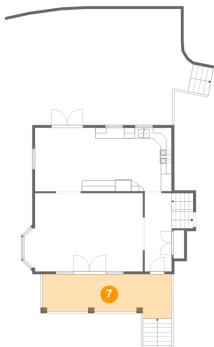
6 Floor 1 - Family Room



Max Dimensions: 23'11" x 18'7"
Calculated Area: 388 sq. ft
Included: Yes

Heated: Yes
Finished: Yes
Enclosed: Yes
Contiguous: Yes
Permitted: Yes
Wet space: No
Addition: No
Conversion: No

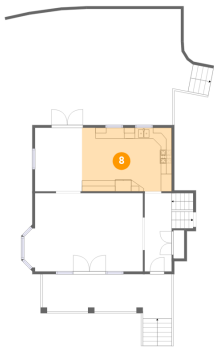
7 Floor 2 - Porch



Max Dimensions: 23'10" x 8'2"
Calculated Area: 171 sq. ft
Included: No

Heated: No
Finished: Yes
Enclosed: No
Contiguous: Yes
Permitted: Yes
Wet space: No
Addition: No
Conversion: No

8 Floor 2 - Kitchen

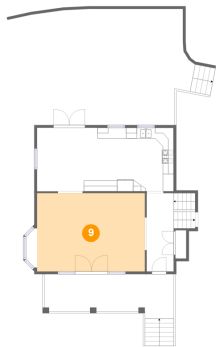


Max Dimensions: 16'7" x 11'9"
Calculated Area: 195 sq. ft
Included: Yes

Heated: Yes
Finished: Yes
Enclosed: Yes
Contiguous: Yes
Permitted: Yes
Wet space: No
Addition: No
Conversion: No

3025 Bancroft Drive Southwest, South Roanoke, Roanoke,
Roanoke city, Virginia, United States, 24014

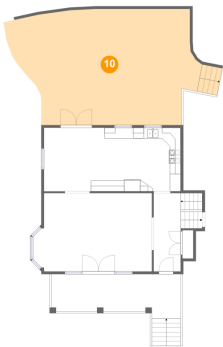
9 Floor 2 - Living Room



Max Dimensions: 19'11" x 14'6"
Calculated Area: 289 sq. ft
Included: Yes

Heated: Yes
Finished: Yes
Enclosed: Yes
Contiguous: Yes
Permitted: Yes
Wet space: No
Addition: No
Conversion: No

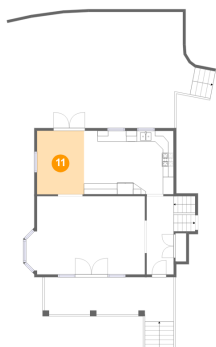
10 Floor 2 - Patio



Max Dimensions: 34'4" x 21'5"
Calculated Area: 670 sq. ft
Included: No

Heated: No
Finished: Yes
Enclosed: No
Contiguous: Yes
Permitted: Yes
Wet space: No
Addition: No
Conversion: No

11 Floor 2 - Dining Area

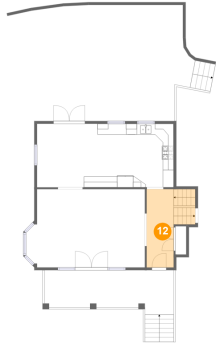


Max Dimensions: 8'8" x 11'9"
Calculated Area: 102 sq. ft
Included: Yes

Heated: Yes
Finished: Yes
Enclosed: Yes
Contiguous: Yes
Permitted: Yes
Wet space: No
Addition: No
Conversion: No

3025 Bancroft Drive Southwest, South Roanoke, Roanoke,
Roanoke city, Virginia, United States, 24014

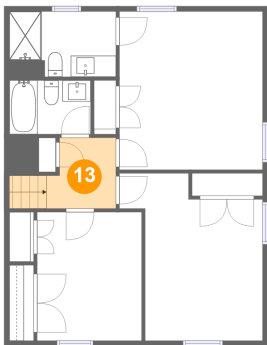
12 Floor 2 - Foyer



Max Dimensions: 4'11" x 14'6"
Calculated Area: 98 sq. ft
Included: Yes

Heated: Yes
Finished: Yes
Enclosed: Yes
Contiguous: Yes
Permitted: Yes
Wet space: No
Addition: No
Conversion: No

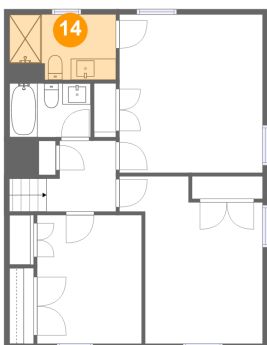
13 Floor 3 - Hall



Max Dimensions: 6'7" x 6'8"
Calculated Area: 50 sq. ft
Included: Yes

Heated: Yes
Finished: Yes
Enclosed: Yes
Contiguous: Yes
Permitted: Yes
Wet space: No
Addition: No
Conversion: No

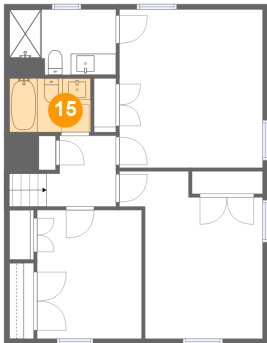
14 Floor 3 - Bath



Max Dimensions: 10'1" x 6'2"
Calculated Area: 57 sq. ft
Included: Yes

Heated: Yes
Finished: Yes
Enclosed: Yes
Contiguous: Yes
Permitted: Yes
Wet space: Yes
Addition: No
Conversion: No

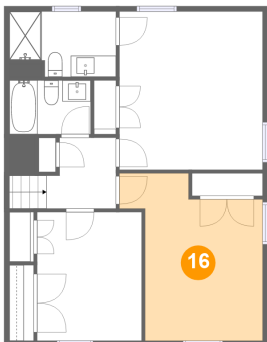
15 Floor 3 - Bath



Max Dimensions: 7'8" x 5'1"
Calculated Area: 39 sq. ft
Included: Yes

Heated: Yes
Finished: Yes
Enclosed: Yes
Contiguous: Yes
Permitted: Yes
Wet space: Yes
Addition: No
Conversion: No

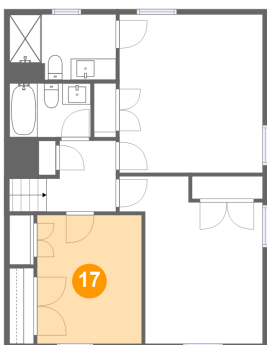
16 Floor 3 - Bedroom



Max Dimensions: 13'6" x 15'10"
Calculated Area: 166 sq. ft
Included: Yes

Heated: Yes
Finished: Yes
Enclosed: Yes
Contiguous: Yes
Permitted: Yes
Wet space: No
Addition: No
Conversion: No

17 Floor 3 - Bedroom



Max Dimensions: 9'10" x 12'1"
Calculated Area: 120 sq. ft
Included: Yes

Heated: Yes
Finished: Yes
Enclosed: Yes
Contiguous: Yes
Permitted: Yes
Wet space: No
Addition: No
Conversion: No

3025 Bancroft Drive Southwest, South Roanoke, Roanoke,
Roanoke city, Virginia, United States, 24014

18 Floor 3 - Primary Bedroom



Max Dimensions: 13'6" x 14'11"
Calculated Area: 202 sq. ft
Included: Yes

Heated: Yes
Finished: Yes
Enclosed: Yes
Contiguous: Yes
Permitted: Yes
Wet space: No
Addition: No
Conversion: No