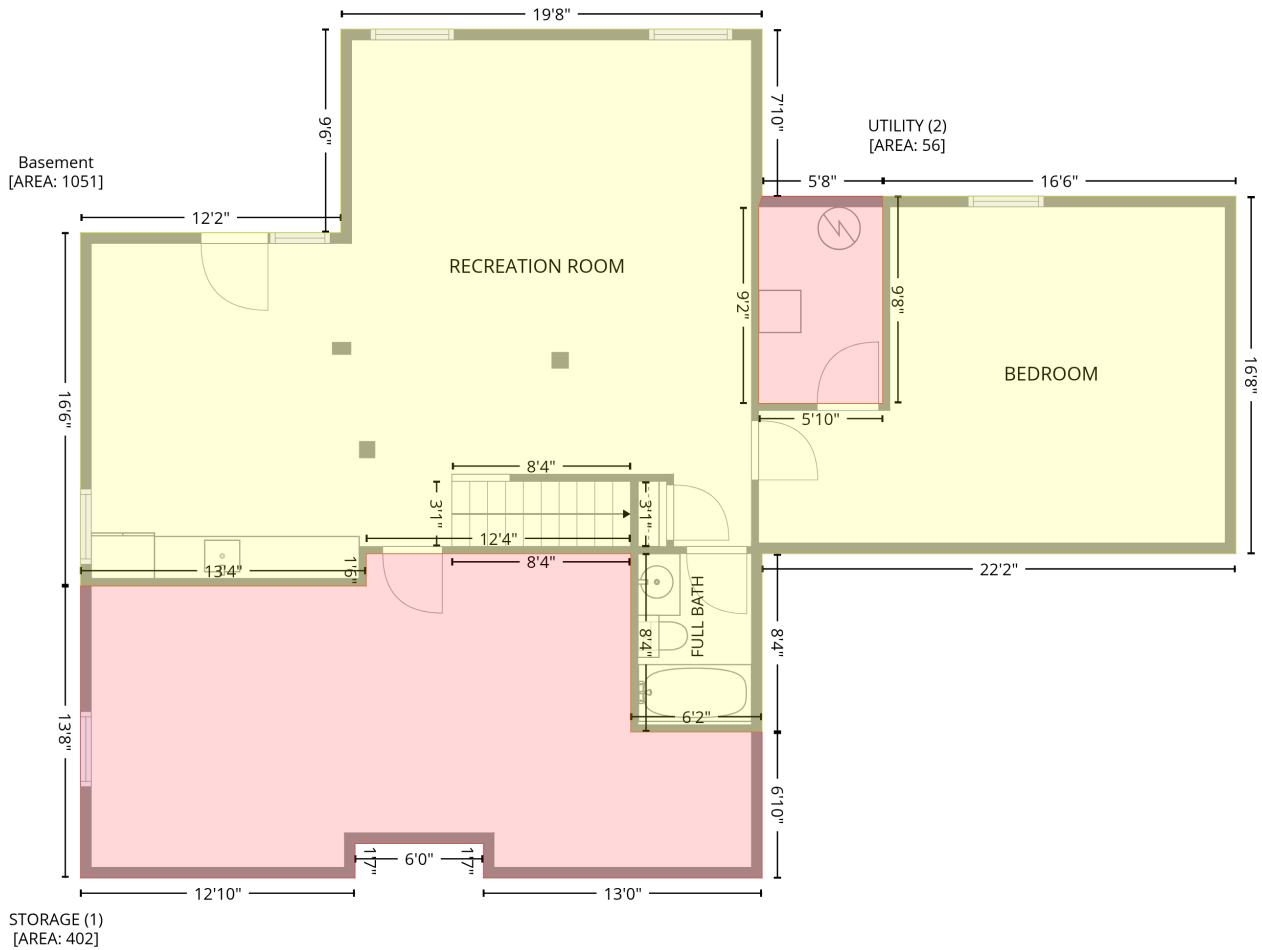


7726 Virginia Oaks Drive, Lakeview, Gainesville, Prince William County, Virginia, United States, 20155

Gross Living Area: 2928 sq. ft

Level 1 - Below Grade

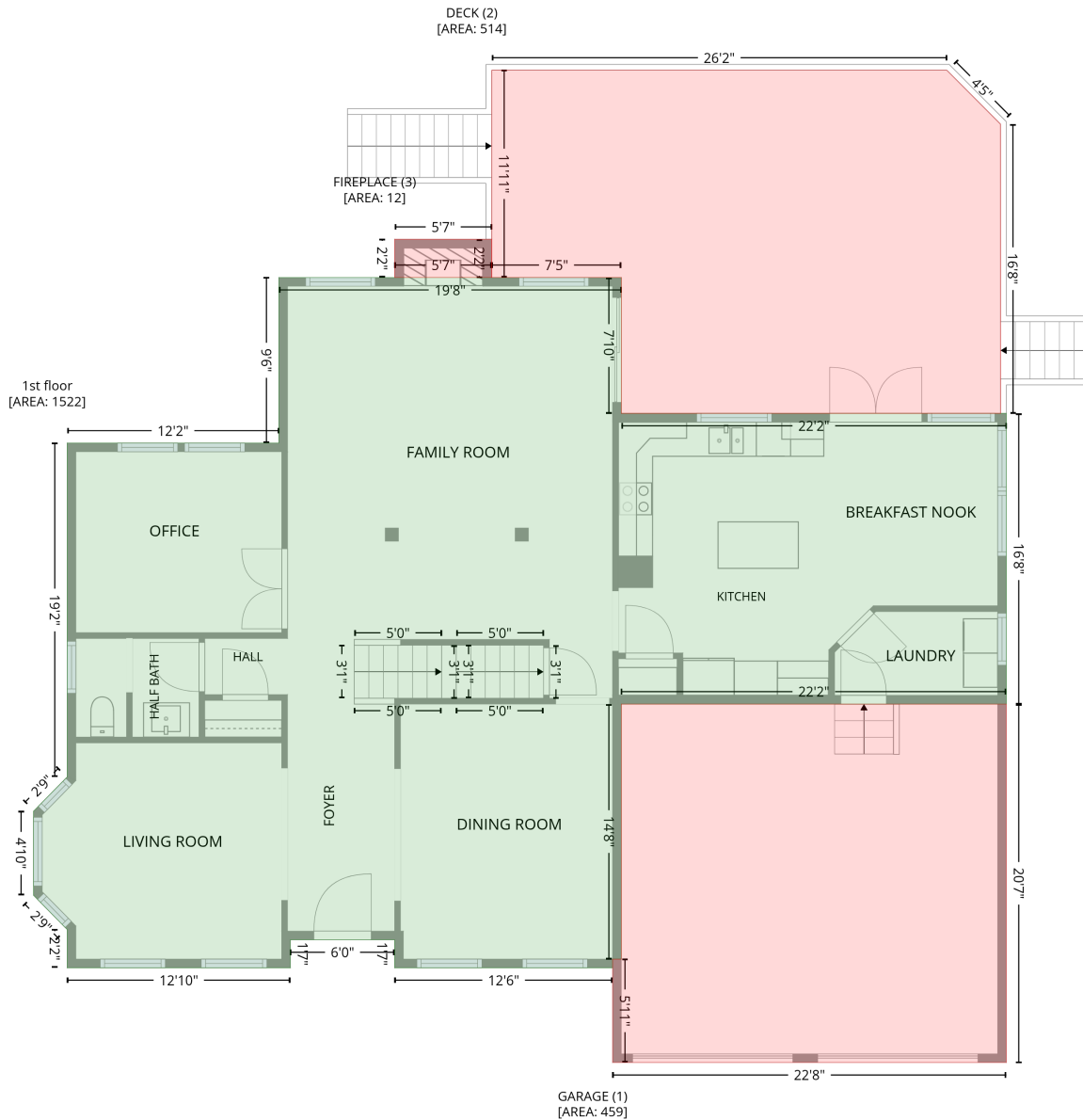


| Space | Area (sq. ft) | Calculation <small>Coordinate Polygon Area Algorithm using inches</small> |
|------------------------------|---------------|---|
| Basement (Living area) | 1051 | $-\left((424.2 + 424.2) * (459.2 - 559.2) + (424.2 + 350.5) * (559.2 - 559.2) + (350.5 + 350.5) * (559.2 - 459.2) + (350.5 + 202.1) * (459.2 - 459.2) + (202.1 + 202.1) * (459.2 - 477.3) + (202.1 + 41.9) * (477.3 - 477.3) + (41.9 + 41.9) * (477.3 - 279.2) + (41.9 + 187.9) * (279.2 - 279.2) + (187.9 + 187.9) * (279.2 - 165) + (187.9 + 424.2) * (165 - 165) + (424.2 + 424.2) * (165 - 258.7) + (424.2 + 422.2) * (258.7 - 264.7) + (422.2 + 422.2) * (264.7 - 374.9) + (422.2 + 491.9) * (374.9 - 374.9) + (491.9 + 491.9) * (374.9 - 258.7) + (491.9 + 690) * (258.7 - 258.7) + (690 + 690) * (258.7 - 459.2) + (690 + 424.2) * (459.2 - 459.2)\right) * 0.5 * 0.00694$ |
| STORAGE (Non-living area) | 402 | $-\left((350.5 + 350.5) * (459.2 - 559.2) + (350.5 + 424.2) * (559.2 - 559.2) + (424.2 + 424.2) * (559.2 - 641.1) + (424.2 + 267.8) * (641.1 - 641.1) + (267.8 + 267.8) * (641.1 - 621.8) + (267.8 + 195.9) * (621.8 - 621.8) + (195.9 + 195.9) * (621.8 - 641.1) + (195.9 + 41.9) * (641.1 - 641.1) + (41.9 + 41.9) * (641.1 - 477.3) + (41.9 + 202.1) * (477.3 - 477.3) + (202.1 + 202.1) * (477.3 - 459.2) + (202.1 + 350.5) * (459.2 - 459.2)\right) * 0.5 * 0.00694$ |
| UTILITY (Non-living area) | 56 | $-\left((491.9 + 491.9) * (258.7 - 374.9) + (491.9 + 422.2) * (374.9 - 374.9) + (422.2 + 422.2) * (374.9 - 264.7) + (422.2 + 424.2) * (264.7 - 258.7) + (424.2 + 491.9) * (258.7 - 258.7)\right) * 0.5 * 0.00694$ |

7726 Virginia Oaks Drive, Lakeview, Gainesville, Prince William County, Virginia, United States, 20155

Gross Living Area: 2928 sq. ft

Level 2



| Space | Area (sq. ft) | Calculation |
|----------------------------|---------------|--|
| 1st floor (Living area) | 1522 | Coordinate Polygon Area Algorithm using inches $-((424.2 + 424.2) * (165 - 258.7) + (424.2 + 690) * (258.7 - 258.7) + (690 + 690) * (258.7 - 459.2) + (690 + 424.2) * (459.2 - 459.2) + (424.2 + 424.2) * (459.2 - 635.1) + (424.2 + 418.2) * (635.1 - 635.1) + (418.2 + 418.2) * (635.1 - 641.1) + (418.2 + 267.8) * (641.1 - 641.1) + (267.8 + 267.8) * (641.1 - 621.8) + (267.8 + 195.9) * (621.8 - 621.8) + (195.9 + 195.9) * (621.8 - 641.1) + (195.9 + 41.9) * (641.1 - 641.1) + (41.9 + 41.9) * (641.1 - 614.7) + (41.9 + 18.6) * (614.7 - 591.1) + (18.6 + 18.6) * (591.1 - 533.1) + (18.6 + 41.9) * (533.1 - 509.5) + (41.9 + 41.9) * (509.5 - 279.2) + (41.9 + 187.9) * (279.2 - 279.2) + (187.9 + 187.9) * (279.2 - 165) + (187.9 + 424.2) * (165 - 165)) * 0.5 * 0.00694$ |

7726 Virginia Oaks Drive, Lakeview, Gainesville, Prince William County, Virginia, United States, 20155

Gross Living Area: 2928 sq. ft

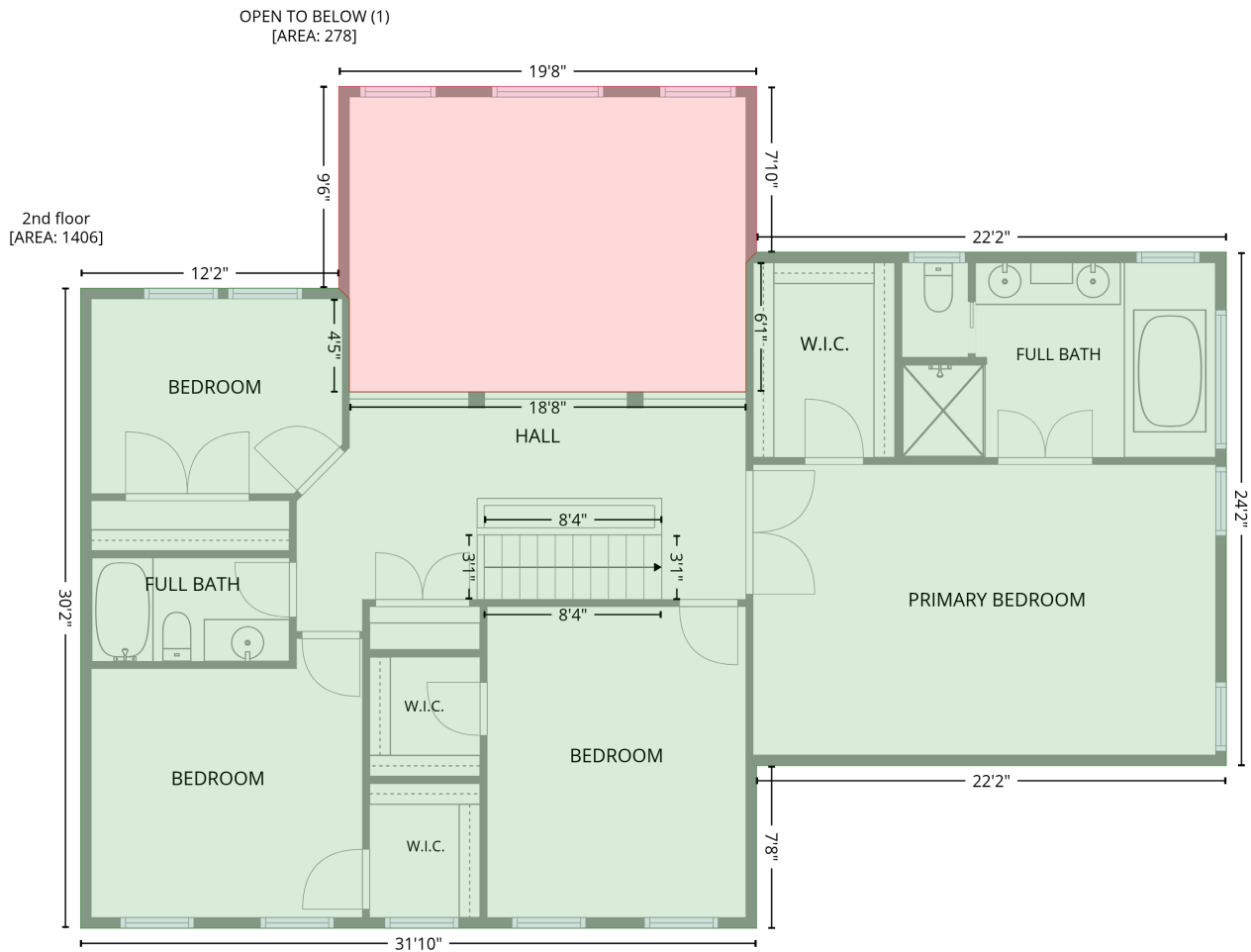
Level 2

| Space | Area (sq. ft) | Calculation <small>Coordinate Polygon Area Algorithm using inches</small> |
|--------------------------------|---------------|---|
| GARAGE (Non-living area) | 459 | $-\left((690 + 690) * (459.2 - 706.5) + (690 + 418.2) * (706.5 - 706.5) + (418.2 + 418.2) * (706.5 - 635.1) + (418.2 + 424.2) * (635.1 - 635.1) + (424.2 + 424.2) * (635.1 - 459.2) + (424.2 + 690) * (459.2 - 459.2)\right) * 0.5 * 0.00694$ |
| DECK (Non-living area) | 514 | $-\left((648.8 + 685.9) * (22 - 59.2) + (685.9 + 686.1) * (59.2 - 258.7) + (686.1 + 424.2) * (258.7 - 258.7) + (424.2 + 424.2) * (258.7 - 165) + (424.2 + 334.9) * (165 - 165) + (334.9 + 334.9) * (165 - 22) + (334.9 + 648.8) * (22 - 22)\right) * 0.5 * 0.00694$ |
| FIREPLACE (Non-living area) | 12 | $-\left((334.9 + 334.9) * (138.7 - 165) + (334.9 + 267.8) * (165 - 165) + (267.8 + 267.8) * (165 - 138.7) + (267.8 + 334.9) * (138.7 - 138.7)\right) * 0.5 * 0.00694$ |

7726 Virginia Oaks Drive, Lakeview, Gainesville, Prince William County, Virginia, United States, 20155

Gross Living Area: 2928 sq. ft

Level 3



| Space | Area (sq. ft) | Calculation <small>Coordinate Polygon Area Algorithm using inches</small> |
|------------------------------------|---------------|---|
| 2nd floor (Living area) | 1406 | $-\left((690 + 690) * (258.7 - 549.2) + (690 + 424.2) * (549.2 - 549.2) + (424.2 + 424.2) * (549.2 - 641.1) + (424.2 + 41.9) * (641.1 - 641.1) + (41.9 + 41.9) * (641.1 - 279.2) + (41.9 + 187.9) * (279.2 - 279.2) + (187.9 + 193.9) * (279.2 - 285.2) + (193.9 + 193.9) * (285.2 - 337.8) + (193.9 + 418.2) * (337.8 - 337.8) + (418.2 + 418.2) * (337.8 - 264.7) + (418.2 + 424.2) * (264.7 - 258.7) + (424.2 + 690) * (258.7 - 258.7)\right) * 0.5 * 0.00694$ |
| OPEN TO BELOW (Non-living area) | 278 | $-\left((424.2 + 424.2) * (165 - 258.7) + (424.2 + 418.2) * (258.7 - 264.7) + (418.2 + 418.2) * (264.7 - 337.8) + (418.2 + 193.9) * (337.8 - 337.8) + (193.9 + 193.9) * (337.8 - 285.2) + (193.9 + 187.9) * (285.2 - 279.2) + (187.9 + 187.9) * (279.2 - 165) + (187.9 + 424.2) * (165 - 165)\right) * 0.5 * 0.00694$ |