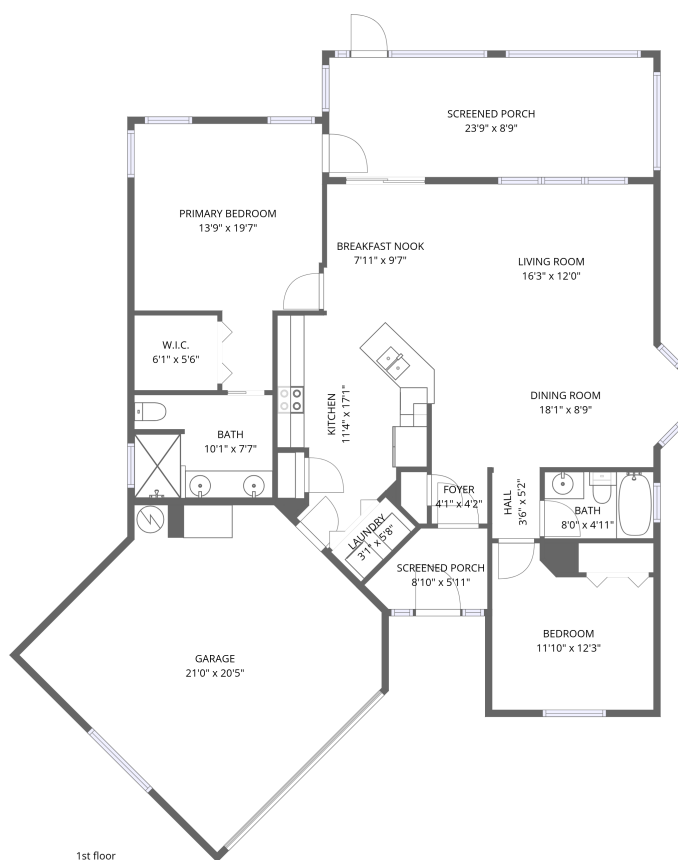


Home data report

2724 Golf Lake Drive, Walden Lake, Plant City, Hillsborough County, Florida, United States, 33566



Total Area: 1177 sq. ft

1st Floor: 1177 sq. ft

Excluded: Screened porch 252 sq. ft, Garage 411 sq. ft, Walls: 134 sq. ft

Property summary



1

Floors



2

Bedrooms



2

Bathrooms



1

Garages

Home data report

2724 Golf Lake Drive, Walden Lake, Plant City, Hillsborough County, Florida, United States, 33566



Room dimensions

Floor 1

Total:1177sqft Excluded: 663sqft

#		Dimensions	sqft	Counted as living area
1	Bath	10'1" x 7'7"	76 sq. ft	Yes
2	Dining Room	18'1" x 8'9"	158 sq. ft	Yes
3	Screened Porch	8'10" x 5'11"	52 sq. ft	No
4	Kitchen	11'4" x 17'1"	193 sq. ft	Yes
5	Screened Porch	23'9" x 8'9"	209 sq. ft	No
6	Primary Bedroom	13'9" x 19'7"	269 sq. ft	Yes
7	Breakfast Nook	7'11" x 9'7"	76 sq. ft	Yes
8	Garage	21'0" x 20'5"	428 sq. ft	No
9	Laundry	3'1" x 5'8"	17 sq. ft	Yes
10	Bath	8'0" x 4'11"	39 sq. ft	Yes
11	Hall	3'6" x 5'2"	18 sq. ft	Yes

Home data report

**2724 Golf Lake Drive, Walden Lake, Plant City, Hillsborough
County, Florida, United States, 33566**

#		Dimensions	sqft	Counted as living area
12	Foyer	4'1" x 4'2"	17 sq. ft	Yes
13	Bedroom	11'10" x 12'3"	145 sq. ft	Yes
14	W.I.C.	6'1" x 5'6"	34 sq. ft	Yes
15	Living Room	16'3" x 12'0"	194 sq. ft	Yes

2724 Golf Lake Drive, Walden Lake, Plant City, Hillsborough County, Florida, United States, 33566

1 Floor 1 - Bath



Dimensions: 10'1" x 7'7"
Area: 76 sq. ft
Counted as living area: Yes

Heated: Yes
Finished: Yes
Enclosed: Yes
Contiguous: Yes
Permitted: Yes
Wet space: Yes
Addition: No
Conversion: No

2 Floor 1 - Dining Room



Dimensions: 18'1" x 8'9"
Area: 158 sq. ft
Counted as living area: Yes

Heated: Yes
Finished: Yes
Enclosed: Yes
Contiguous: Yes
Permitted: Yes
Wet space: No
Addition: No
Conversion: No

2724 Golf Lake Drive, Walden Lake, Plant City, Hillsborough County, Florida, United States, 33566

3 Floor 1 - Screened Porch



Dimensions: 8'10" x 5'11"
Area: 52 sq. ft
Counted as living area: No

Heated: No
Finished: No
Enclosed: No
Contiguous: Yes
Permitted: Yes
Wet space: No
Addition: No
Conversion: No

4 Floor 1 - Kitchen



Dimensions: 11'4" x 17'1"
Area: 193 sq. ft
Counted as living area: Yes

Heated: Yes
Finished: Yes
Enclosed: Yes
Contiguous: Yes
Permitted: Yes
Wet space: No
Addition: No
Conversion: No

5 Floor 1 - Screened Porch

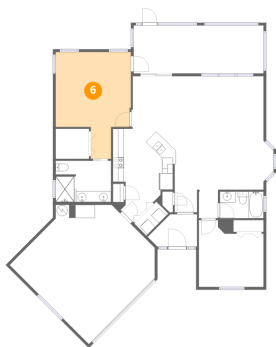


Dimensions: 23'9" x 8'9"
Area: 209 sq. ft
Counted as living area: No

Heated: No
Finished: No
Enclosed: No
Contiguous: Yes
Permitted: Yes
Wet space: No
Addition: No
Conversion: No

2724 Golf Lake Drive, Walden Lake, Plant City, Hillsborough County, Florida, United States, 33566

6 Floor 1 - Primary Bedroom



Dimensions: 13'9" x 19'7"
Area: 269 sq. ft
Counted as living area: Yes

Heated: Yes
Finished: Yes
Enclosed: Yes
Contiguous: Yes
Permitted: Yes
Wet space: No
Addition: No
Conversion: No

7 Floor 1 - Breakfast Nook



Dimensions: 7'11" x 9'7"
Area: 76 sq. ft
Counted as living area: Yes

Heated: Yes
Finished: Yes
Enclosed: Yes
Contiguous: Yes
Permitted: Yes
Wet space: No
Addition: No
Conversion: No

8 Floor 1 - Garage



Dimensions: 21'0" x 20'5"
Area: 428 sq. ft
Counted as living area: No

Heated: No
Finished: No
Enclosed: Yes
Contiguous: Yes
Permitted: Yes
Wet space: No
Addition: No
Conversion: No

2724 Golf Lake Drive, Walden Lake, Plant City, Hillsborough County, Florida, United States, 33566

9 Floor 1 - Laundry



Dimensions: 3'1" x 5'8"
Area: 17 sq. ft
Counted as living area: Yes

Heated: Yes
Finished: Yes
Enclosed: Yes
Contiguous: Yes
Permitted: Yes
Wet space: No
Addition: No
Conversion: No

10 Floor 1 - Bath



Dimensions: 8'0" x 4'11"
Area: 39 sq. ft
Counted as living area: Yes

Heated: Yes
Finished: Yes
Enclosed: Yes
Contiguous: Yes
Permitted: Yes
Wet space: Yes
Addition: No
Conversion: No

11 Floor 1 - Hall



Dimensions: 3'6" x 5'2"
Area: 18 sq. ft
Counted as living area: Yes

Heated: Yes
Finished: Yes
Enclosed: Yes
Contiguous: Yes
Permitted: Yes
Wet space: No
Addition: No
Conversion: No

2724 Golf Lake Drive, Walden Lake, Plant City, Hillsborough County, Florida, United States, 33566

12 Floor 1 - Foyer



Dimensions: 4'1" x 4'2"
Area: 17 sq. ft
Counted as living area: Yes

Heated: Yes
Finished: Yes
Enclosed: Yes
Contiguous: Yes
Permitted: Yes
Wet space: No
Addition: No
Conversion: No

13 Floor 1 - Bedroom



Dimensions: 11'10" x 12'3"
Area: 145 sq. ft
Counted as living area: Yes

Heated: Yes
Finished: Yes
Enclosed: Yes
Contiguous: Yes
Permitted: Yes
Wet space: No
Addition: No
Conversion: No

14 Floor 1 - W.I.C.



Dimensions: 6'1" x 5'6"
Area: 34 sq. ft
Counted as living area: Yes

Heated: Yes
Finished: Yes
Enclosed: Yes
Contiguous: Yes
Permitted: Yes
Wet space: No
Addition: No
Conversion: No

Home data report

2724 Golf Lake Drive, Walden Lake, Plant City, Hillsborough
County, Florida, United States, 33566

15 Floor 1 - Living Room



Dimensions: 16'3" x 12'0"
Area: 194 sq. ft
Counted as living area: Yes

Heated: Yes
Finished: Yes
Enclosed: Yes
Contiguous: Yes
Permitted: Yes
Wet space: No
Addition: No
Conversion: No