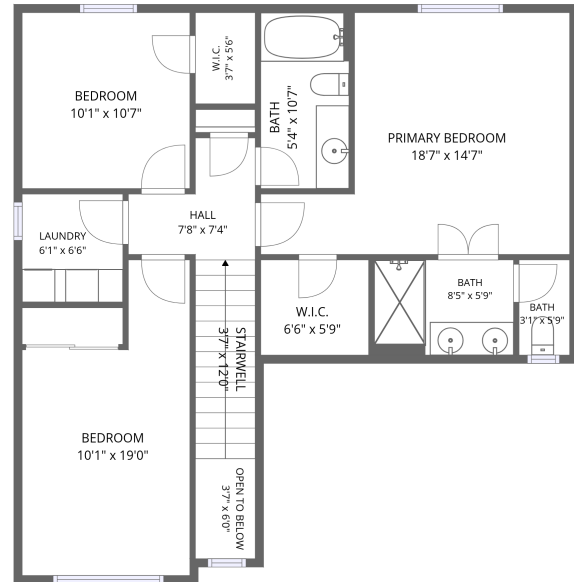
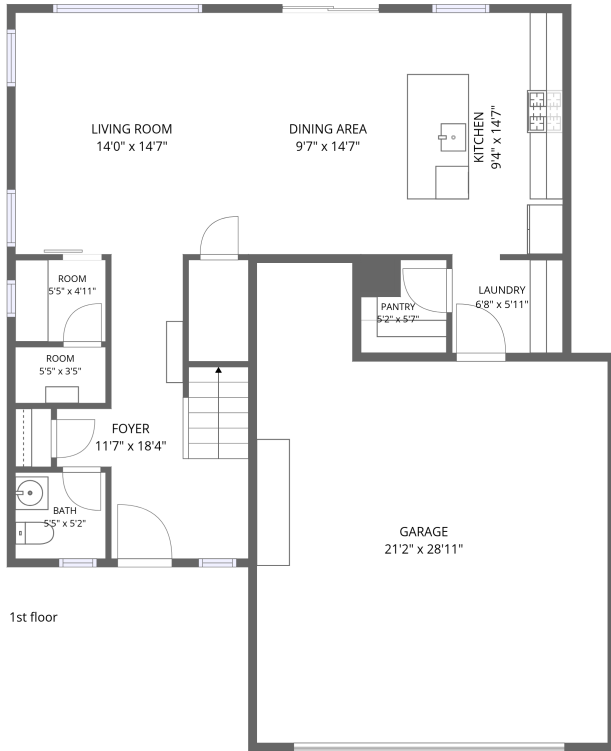


Home data report

444 Henry Potter Rd, Box Elder, SD, US

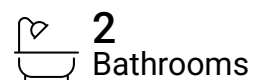
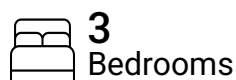


Total Area: 1607 sq. ft

1st Floor: 809 sq. ft, 2nd Floor: 798 sq. ft

Excluded: Garage 520 sq. ft, Stairwell 43 sq. ft, Open to below 22 sq. ft, Walls: 170 sq. ft

Property summary



Home data report

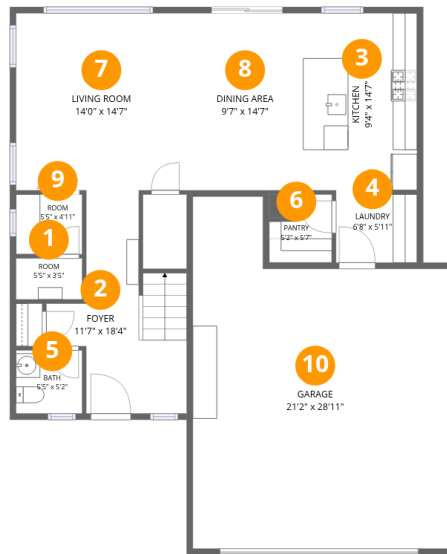
444 Henry Potter Rd,Box Elder,SD,US

 **1**
Half baths

 **1**
Garages

Home data report

444 Henry Potter Rd,Box Elder,SD,US



Room dimensions

Floor 1

Total:809sqft

Excluded: 520sqft

#		Dimensions	sqft	Counted as living area
1	Room	5'5" x 3'5"	18 sq. ft	Yes
2	Foyer	11'7" x 18'4"	136 sq. ft	Yes
3	Kitchen	9'4" x 14'7"	136 sq. ft	Yes
4	Laundry	6'8" x 5'11"	38 sq. ft	Yes
5	Bath	5'5" x 5'2"	28 sq. ft	Yes
6	Pantry	5'2" x 5'7"	24 sq. ft	Yes
7	Living Room	14'0" x 14'7"	204 sq. ft	Yes
8	Dining Area	9'7" x 14'7"	139 sq. ft	Yes
9	Room	5'5" x 4'11"	27 sq. ft	Yes
10	Garage	21'2" x 28'11"	520 sq. ft	No



Room dimensions

Floor 2

Total:798sqft Excluded: 65sqft

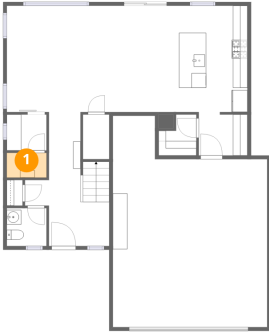
#		Dimensions	sqft	Counted as living area
11	Stairwell	3'7" x 12'0"	43 sq. ft	No
12	Primary Bedroom	18'7" x 14'7"	209 sq. ft	Yes
13	Bath	3'1" x 5'9"	17 sq. ft	Yes
14	Bedroom	10'1" x 19'0"	157 sq. ft	Yes
15	Open To Below	3'7" x 6'0"	22 sq. ft	No
16	Bedroom	10'1" x 10'7"	107 sq. ft	Yes
17	Bath	5'4" x 10'7"	56 sq. ft	Yes
18	Laundry	6'1" x 6'6"	40 sq. ft	Yes
19	W.I.C.	3'7" x 5'6"	20 sq. ft	Yes
20	Bath	8'5" x 5'9"	48 sq. ft	Yes
21	Hall	7'8" x 7'4"	41 sq. ft	Yes

Home data report

444 Henry Potter Rd,Box Elder,SD,US

#		Dimensions	sqft	Counted as living area
22	W.I.C.	6'6" x 5'9"	37 sq. ft	Yes

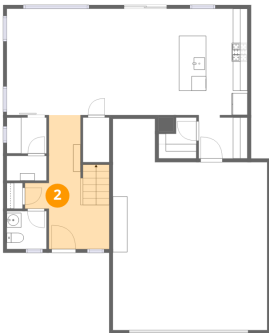
1 Floor 1 - Room



Dimensions: 5'5" x 3'5"
Area: 18 sq. ft
Counted as living area: Yes

Heated: Yes
Finished: Yes
Enclosed: Yes
Contiguous: Yes
Permitted: Yes
Wet space: No
Addition: No
Conversion: No

2 Floor 1 - Foyer



Dimensions: 11'7" x 18'4"
Area: 136 sq. ft
Counted as living area: Yes

Heated: Yes
Finished: Yes
Enclosed: Yes
Contiguous: Yes
Permitted: Yes
Wet space: No
Addition: No
Conversion: No

3 Floor 1 - Kitchen



Dimensions: 9'4" x 14'7"
Area: 136 sq. ft
Counted as living area: Yes

Heated: Yes
Finished: Yes
Enclosed: Yes
Contiguous: Yes
Permitted: Yes
Wet space: No
Addition: No
Conversion: No

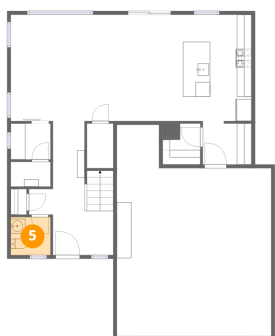
4 Floor 1 - Laundry



Dimensions: 6'8" x 5'11"
Area: 38 sq. ft
Counted as living area: Yes

Heated: Yes
Finished: Yes
Enclosed: Yes
Contiguous: Yes
Permitted: Yes
Wet space: No
Addition: No
Conversion: No

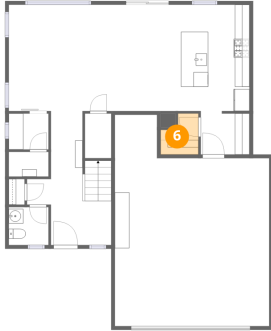
5 Floor 1 - Bath



Dimensions: 5'5" x 5'2"
Area: 28 sq. ft
Counted as living area: Yes

Heated: Yes
Finished: Yes
Enclosed: Yes
Contiguous: Yes
Permitted: Yes
Wet space: Yes
Addition: No
Conversion: No

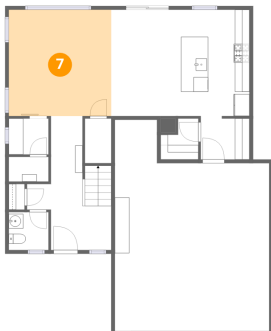
6 Floor 1 - Pantry



Dimensions: 5'2" x 5'7"
Area: 24 sq. ft
Counted as living area: Yes

Heated: Yes
Finished: Yes
Enclosed: Yes
Contiguous: Yes
Permitted: Yes
Wet space: No
Addition: No
Conversion: No

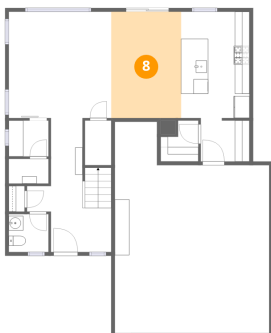
7 Floor 1 - Living Room



Dimensions: 14'0" x 14'7"
Area: 204 sq. ft
Counted as living area: Yes

Heated: Yes
Finished: Yes
Enclosed: Yes
Contiguous: Yes
Permitted: Yes
Wet space: No
Addition: No
Conversion: No

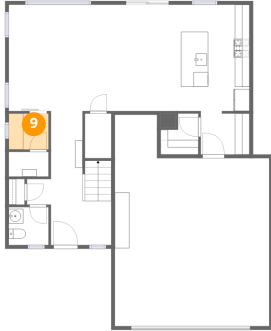
8 Floor 1 - Dining Area



Dimensions: 9'7" x 14'7"
Area: 139 sq. ft
Counted as living area: Yes

Heated: Yes
Finished: Yes
Enclosed: Yes
Contiguous: Yes
Permitted: Yes
Wet space: No
Addition: No
Conversion: No

9 Floor 1 - Room



Dimensions: 5'5" x 4'11"
Area: 27 sq. ft
Counted as living area: Yes

Heated: Yes
Finished: Yes
Enclosed: Yes
Contiguous: Yes
Permitted: Yes
Wet space: No
Addition: No
Conversion: No

10 Floor 1 - Garage



Dimensions: 21'2" x 28'11"
Area: 520 sq. ft
Counted as living area: No

Heated: No
Finished: No
Enclosed: Yes
Contiguous: Yes
Permitted: Yes
Wet space: No
Addition: No
Conversion: No

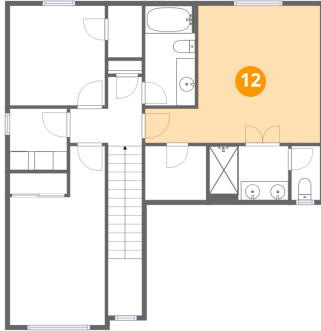
11 Floor 2 - Stairwell



Dimensions: 3'7" x 12'0"
Area: 43 sq. ft
Counted as living area: No

Heated: No
Finished: No
Enclosed: No
Contiguous: Yes
Permitted: No
Wet space: No
Addition: No
Conversion: No

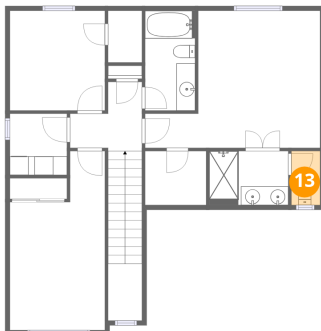
12 Floor 2 - Primary Bedroom



Dimensions: 18'7" x 14'7"
Area: 209 sq. ft
Counted as living area: Yes

Heated: Yes
Finished: Yes
Enclosed: Yes
Contiguous: Yes
Permitted: Yes
Wet space: No
Addition: No
Conversion: No

13 Floor 2 - Bath



Dimensions: 3'1" x 5'9"
Area: 17 sq. ft
Counted as living area: Yes

Heated: Yes
Finished: Yes
Enclosed: Yes
Contiguous: Yes
Permitted: Yes
Wet space: Yes
Addition: No
Conversion: No

14 Floor 2 - Bedroom



Dimensions: 10'1" x 19'0"
Area: 157 sq. ft
Counted as living area: Yes

Heated: Yes
Finished: Yes
Enclosed: Yes
Contiguous: Yes
Permitted: Yes
Wet space: No
Addition: No
Conversion: No

15 Floor 2 - Open To Below



Dimensions: 3'7" x 6'0"
Area: 22 sq. ft
Counted as living area: No

Heated: No
Finished: No
Enclosed: No
Contiguous: Yes
Permitted: No
Wet space: No
Addition: No
Conversion: No

16 Floor 2 - Bedroom



Dimensions: 10'1" x 10'7"
Area: 107 sq. ft
Counted as living area: Yes

Heated: Yes
Finished: Yes
Enclosed: Yes
Contiguous: Yes
Permitted: Yes
Wet space: No
Addition: No
Conversion: No

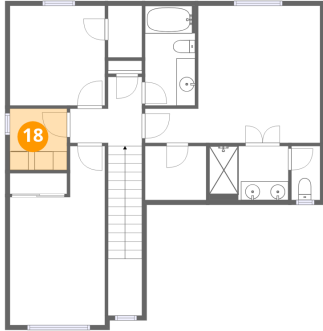
17 Floor 2 - Bath



Dimensions: 5'4" x 10'7"
Area: 56 sq. ft
Counted as living area: Yes

Heated: Yes
Finished: Yes
Enclosed: Yes
Contiguous: Yes
Permitted: Yes
Wet space: Yes
Addition: No
Conversion: No

18 Floor 2 - Laundry



Dimensions: 6'1" x 6'6"
Area: 40 sq. ft
Counted as living area: Yes

Heated: Yes
Finished: Yes
Enclosed: Yes
Contiguous: Yes
Permitted: Yes
Wet space: No
Addition: No
Conversion: No

19 Floor 2 - W.I.C.



Dimensions: 3'7" x 5'6"
Area: 20 sq. ft
Counted as living area: Yes

Heated: Yes
Finished: Yes
Enclosed: Yes
Contiguous: Yes
Permitted: Yes
Wet space: No
Addition: No
Conversion: No

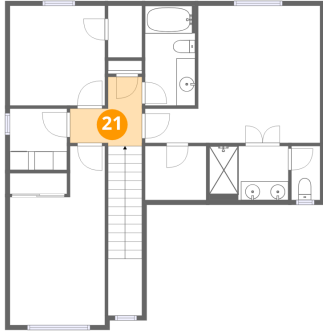
20 Floor 2 - Bath



Dimensions: 8'5" x 5'9"
Area: 48 sq. ft
Counted as living area: Yes

Heated: Yes
Finished: Yes
Enclosed: Yes
Contiguous: Yes
Permitted: Yes
Wet space: Yes
Addition: No
Conversion: No

21 Floor 2 - Hall



Dimensions: 7'8" x 7'4"
Area: 41 sq. ft
Counted as living area: Yes

Heated: Yes
Finished: Yes
Enclosed: Yes
Contiguous: Yes
Permitted: Yes
Wet space: No
Addition: No
Conversion: No

22 Floor 2 - W.I.C.



Dimensions: 6'6" x 5'9"
Area: 37 sq. ft
Counted as living area: Yes

Heated: Yes
Finished: Yes
Enclosed: Yes
Contiguous: Yes
Permitted: Yes
Wet space: No
Addition: No
Conversion: No