

## Home data report

1588 White Oak Road, Lake Forest, Lake County, Illinois, United States, 60045



**Total Area: 3890 sq. ft**

Basement: 1052 sq. ft, 1st Floor: 1500 sq. ft, 2nd Floor: 1338 sq. ft

Excluded: Utility 141 sq. ft, Garage 481 sq. ft, Patio 855 sq. ft, Fireplace 14 sq. ft, Open to below 135 sq. ft, Walls: 278 sq. ft

## Property summary

 **3** Floors

 **5** Bedrooms

 **3** Bathrooms

Home data report

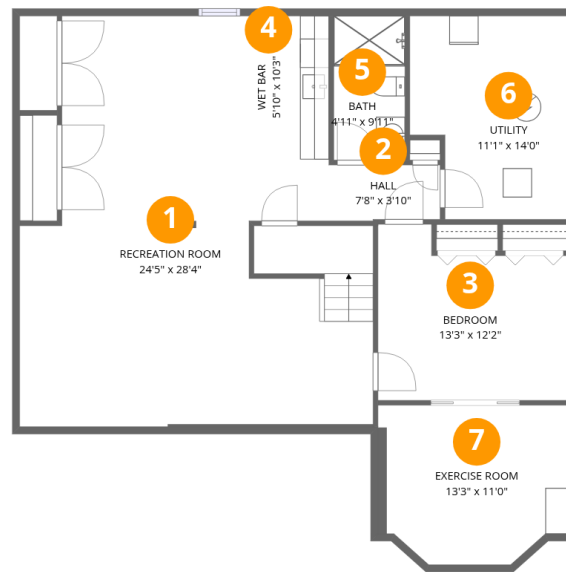
**1588 White Oak Road, Lake Forest, Lake County, Illinois, United States, 60045**

 **1**  
Half baths

 **1**  
Garages

## Home data report

1588 White Oak Road, Lake Forest, Lake County, Illinois, United States, 60045



## Room dimensions

Floor 1 Below grade

Total:1052sqft

Excluded: 141sqft

#		Dimensions	sqft	Counted as living area
1	Recreation Room	24'5" x 28'4"	691 sq. ft	Yes
2	Hall	7'8" x 3'10"	30 sq. ft	Yes
3	Bedroom	13'3" x 12'2"	161 sq. ft	Yes
4	Wet Bar	5'10" x 10'3"	60 sq. ft	Yes
5	Bath	4'11" x 9'11"	49 sq. ft	Yes
6	Utility	11'1" x 14'0"	156 sq. ft	No
7	Exercise Room	13'3" x 11'0"	146 sq. ft	Yes

Home data report

1588 White Oak Road, Lake Forest, Lake County, Illinois, United States, 60045



Room dimensions

Floor 2

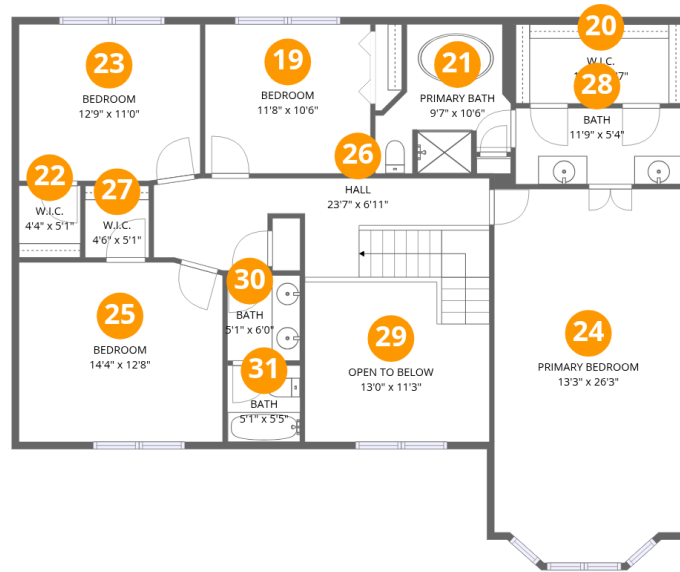
Total:1500sqft

Excluded: 1350sqft

#		Dimensions	sqft	Counted as living area
8	Foyer	13'0" x 11'3"	146 sq. ft	Yes
9	Patio	40'11" x 27'8"	1131 sq. ft	No
10	Garage	21'5" x 22'6"	480 sq. ft	No
11	Breakfast Nook	10'7" x 12'9"	135 sq. ft	Yes
12	Laundry	10'11" x 12'9"	139 sq. ft	Yes
13	Dining Area	11'1" x 16'4"	181 sq. ft	Yes
14	Kitchen	11'0" x 12'9"	140 sq. ft	Yes
15	Family Room	13'3" x 23'5"	311 sq. ft	Yes
16	Hall	5'2" x 8'9"	45 sq. ft	Yes
17	Living Room	21'9" x 14'2"	308 sq. ft	Yes
18	Bath	5'2" x 9'0"	47 sq. ft	Yes

Home data report

1588 White Oak Road, Lake Forest, Lake County, Illinois, United States, 60045



Room dimensions

Floor 3

Total:1338sqft

Excluded: 135sqft

#		Dimensions	sqft	Counted as living area
19	Bedroom	11'8" x 10'6"	122 sq. ft	Yes
20	W.I.C.	11'9" x 5'7"	66 sq. ft	Yes
21	Primary Bath	9'7" x 10'6"	100 sq. ft	Yes
22	W.I.C.	4'4" x 5'1"	22 sq. ft	Yes
23	Bedroom	12'9" x 11'0"	140 sq. ft	Yes
24	Primary Bedroom	13'3" x 26'3"	348 sq. ft	Yes
25	Bedroom	14'4" x 12'8"	181 sq. ft	Yes
26	Hall	23'7" x 6'11"	164 sq. ft	Yes
27	W.I.C.	4'6" x 5'1"	23 sq. ft	Yes
28	Bath	11'9" x 5'4"	63 sq. ft	Yes
29	Open To Below	13'0" x 11'3"	146 sq. ft	No

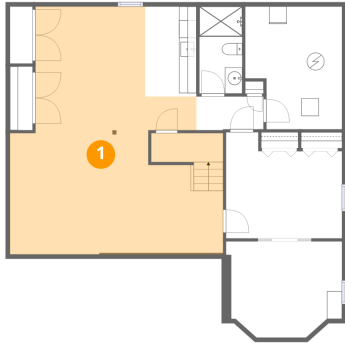
Home data report

**1588 White Oak Road, Lake Forest, Lake County, Illinois, United States, 60045**

#		Dimensions	sqft	Counted as living area
30	Bath	5'1" x 6'0"	31 sq. ft	Yes
31	Bath	5'1" x 5'5"	27 sq. ft	Yes

## 1 Floor 1 - Recreation Room

---

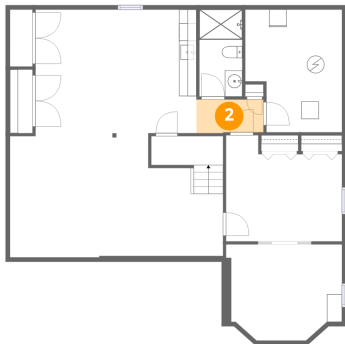


Dimensions: 24'5" x 28'4"  
Area: 691 sq. ft  
Counted as living area: Yes

Heated: Yes  
Finished: Yes  
Enclosed: Yes  
Contiguous: Yes  
Permitted: Yes  
Wet space: No  
Addition: No  
Conversion: No

## 2 Floor 1 - Hall

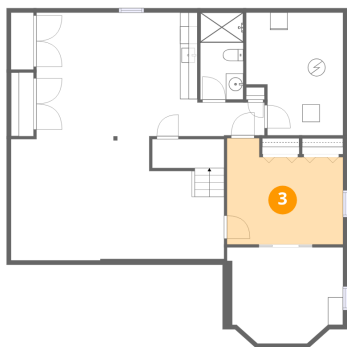
---



Dimensions: 7'8" x 3'10"  
Area: 30 sq. ft  
Counted as living area: Yes

Heated: Yes  
Finished: Yes  
Enclosed: Yes  
Contiguous: Yes  
Permitted: Yes  
Wet space: No  
Addition: No  
Conversion: No

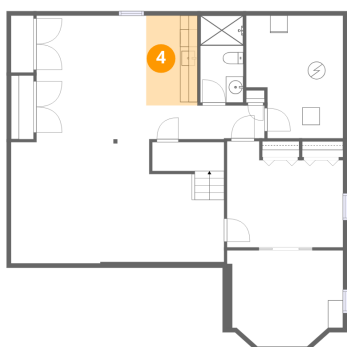
### 3 Floor 1 - Bedroom



Dimensions: 13'3" x 12'2"  
Area: 161 sq. ft  
Counted as living area: Yes

Heated: Yes  
Finished: Yes  
Enclosed: Yes  
Contiguous: Yes  
Permitted: Yes  
Wet space: No  
Addition: No  
Conversion: No

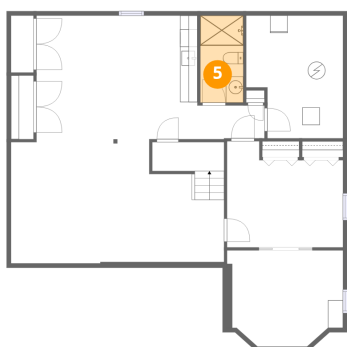
### 4 Floor 1 - Wet Bar



Dimensions: 5'10" x 10'3"  
Area: 60 sq. ft  
Counted as living area: Yes

Heated: Yes  
Finished: Yes  
Enclosed: Yes  
Contiguous: Yes  
Permitted: Yes  
Wet space: No  
Addition: No  
Conversion: No

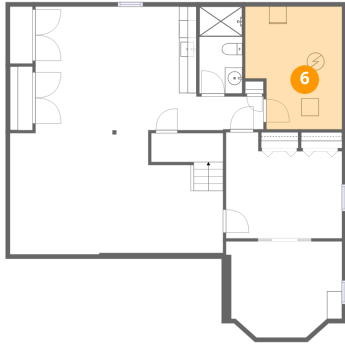
### 5 Floor 1 - Bath



Dimensions: 4'11" x 9'11"  
Area: 49 sq. ft  
Counted as living area: Yes

Heated: Yes  
Finished: Yes  
Enclosed: Yes  
Contiguous: Yes  
Permitted: Yes  
Wet space: Yes  
Addition: No  
Conversion: No

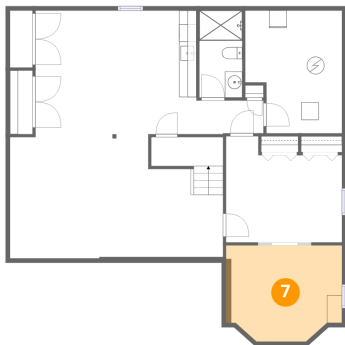
## 6 Floor 1 - Utility



Dimensions: 11'1" x 14'0"  
Area: 156 sq. ft  
Counted as living area: No

Heated: Yes  
Finished: No  
Enclosed: Yes  
Contiguous: Yes  
Permitted: Yes  
Wet space: No  
Addition: No  
Conversion: No

## 7 Floor 1 - Exercise Room



Dimensions: 13'3" x 11'0"  
Area: 146 sq. ft  
Counted as living area: Yes

Heated: Yes  
Finished: Yes  
Enclosed: Yes  
Contiguous: Yes  
Permitted: Yes  
Wet space: No  
Addition: No  
Conversion: No

## 8 Floor 2 - Foyer



Dimensions: 13'0" x 11'3"  
Area: 146 sq. ft  
Counted as living area: Yes

Heated: Yes  
Finished: Yes  
Enclosed: Yes  
Contiguous: Yes  
Permitted: Yes  
Wet space: No  
Addition: No  
Conversion: No

# 1588 White Oak Road, Lake Forest, Lake County, Illinois, United States, 60045

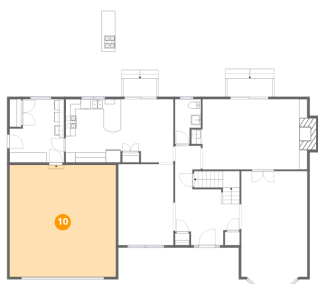
## 9 Floor 2 - Patio



Dimensions: 40'11" x 27'8"  
Area: 1131 sq. ft  
Counted as living area: No

Heated: No  
Finished: No  
Enclosed: No  
Contiguous: Yes  
Permitted: Yes  
Wet space: No  
Addition: No  
Conversion: No

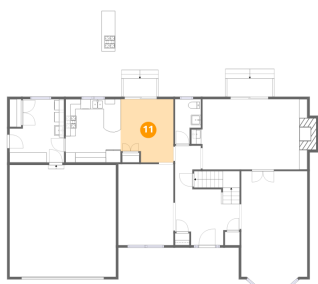
## 10 Floor 2 - Garage



Dimensions: 21'5" x 22'6"  
Area: 480 sq. ft  
Counted as living area: No

Heated: No  
Finished: No  
Enclosed: Yes  
Contiguous: Yes  
Permitted: Yes  
Wet space: No  
Addition: No  
Conversion: No

## 11 Floor 2 - Breakfast Nook



Dimensions: 10'7" x 12'9"  
Area: 135 sq. ft  
Counted as living area: Yes

Heated: Yes  
Finished: Yes  
Enclosed: Yes  
Contiguous: Yes  
Permitted: Yes  
Wet space: No  
Addition: No  
Conversion: No

## 12 Floor 2 - Laundry



Dimensions: 10'11" x 12'9"  
Area: 139 sq. ft  
Counted as living area: Yes

Heated: Yes  
Finished: Yes  
Enclosed: Yes  
Contiguous: Yes  
Permitted: Yes  
Wet space: No  
Addition: No  
Conversion: No

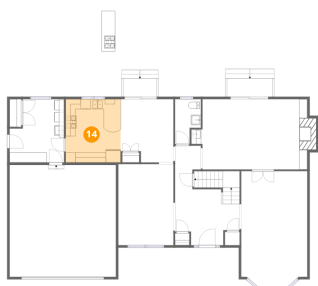
## 13 Floor 2 - Dining Area



Dimensions: 11'1" x 16'4"  
Area: 181 sq. ft  
Counted as living area: Yes

Heated: Yes  
Finished: Yes  
Enclosed: Yes  
Contiguous: Yes  
Permitted: Yes  
Wet space: No  
Addition: No  
Conversion: No

## 14 Floor 2 - Kitchen

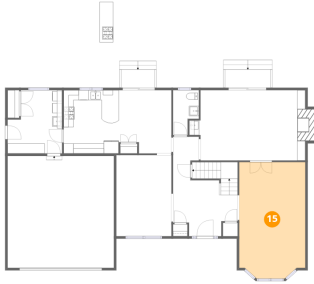


Dimensions: 11'0" x 12'9"  
Area: 140 sq. ft  
Counted as living area: Yes

Heated: Yes  
Finished: Yes  
Enclosed: Yes  
Contiguous: Yes  
Permitted: Yes  
Wet space: No  
Addition: No  
Conversion: No

**15** Floor 2 - Family Room

---



Dimensions: 13'3" x 23'5"  
Area: 311 sq. ft  
Counted as living area: Yes

Heated: Yes  
Finished: Yes  
Enclosed: Yes  
Contiguous: Yes  
Permitted: Yes  
Wet space: No  
Addition: No  
Conversion: No

**16** Floor 2 - Hall

---

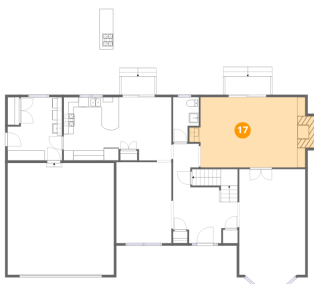


Dimensions: 5'2" x 8'9"  
Area: 45 sq. ft  
Counted as living area: Yes

Heated: Yes  
Finished: Yes  
Enclosed: Yes  
Contiguous: Yes  
Permitted: Yes  
Wet space: No  
Addition: No  
Conversion: No

**17** Floor 2 - Living Room

---



Dimensions: 21'9" x 14'2"  
Area: 308 sq. ft  
Counted as living area: Yes

Heated: Yes  
Finished: Yes  
Enclosed: Yes  
Contiguous: Yes  
Permitted: Yes  
Wet space: No  
Addition: No  
Conversion: No

**18** Floor 2 - Bath



Dimensions: 5'2" x 9'0"  
Area: 47 sq. ft  
Counted as living area: Yes

Heated: Yes  
Finished: Yes  
Enclosed: Yes  
Contiguous: Yes  
Permitted: Yes  
Wet space: Yes  
Addition: No  
Conversion: No

**19** Floor 3 - Bedroom



Dimensions: 11'8" x 10'6"  
Area: 122 sq. ft  
Counted as living area: Yes

Heated: Yes  
Finished: Yes  
Enclosed: Yes  
Contiguous: Yes  
Permitted: Yes  
Wet space: No  
Addition: No  
Conversion: No

**20** Floor 3 - W.I.C.



Dimensions: 11'9" x 5'7"  
Area: 66 sq. ft  
Counted as living area: Yes

Heated: Yes  
Finished: Yes  
Enclosed: Yes  
Contiguous: Yes  
Permitted: Yes  
Wet space: No  
Addition: No  
Conversion: No

### 21 Floor 3 - Primary Bath



Dimensions: 9'7" x 10'6"  
Area: 100 sq. ft  
Counted as living area: Yes

Heated: Yes  
Finished: Yes  
Enclosed: Yes  
Contiguous: Yes  
Permitted: Yes  
Wet space: Yes  
Addition: No  
Conversion: No

### 22 Floor 3 - W.I.C.



Dimensions: 4'4" x 5'1"  
Area: 22 sq. ft  
Counted as living area: Yes

Heated: Yes  
Finished: Yes  
Enclosed: Yes  
Contiguous: Yes  
Permitted: Yes  
Wet space: No  
Addition: No  
Conversion: No

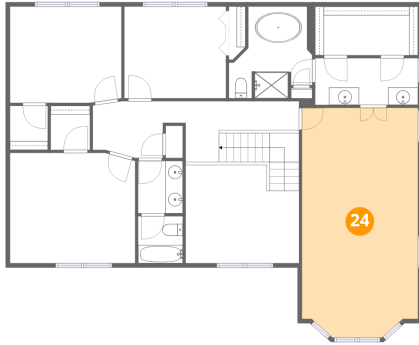
### 23 Floor 3 - Bedroom



Dimensions: 12'9" x 11'0"  
Area: 140 sq. ft  
Counted as living area: Yes

Heated: Yes  
Finished: Yes  
Enclosed: Yes  
Contiguous: Yes  
Permitted: Yes  
Wet space: No  
Addition: No  
Conversion: No

**24** Floor 3 - Primary Bedroom



Dimensions: 13'3" x 26'3"  
Area: 348 sq. ft  
Counted as living area: Yes

Heated: Yes  
Finished: Yes  
Enclosed: Yes  
Contiguous: Yes  
Permitted: Yes  
Wet space: No  
Addition: No  
Conversion: No

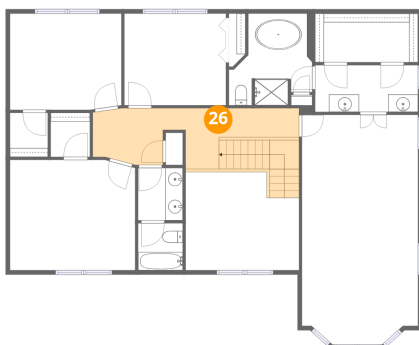
**25** Floor 3 - Bedroom



Dimensions: 14'4" x 12'8"  
Area: 181 sq. ft  
Counted as living area: Yes

Heated: Yes  
Finished: Yes  
Enclosed: Yes  
Contiguous: Yes  
Permitted: Yes  
Wet space: No  
Addition: No  
Conversion: No

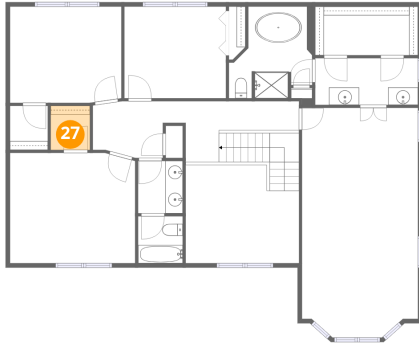
**26** Floor 3 - Hall



Dimensions: 23'7" x 6'11"  
Area: 164 sq. ft  
Counted as living area: Yes

Heated: Yes  
Finished: Yes  
Enclosed: Yes  
Contiguous: Yes  
Permitted: Yes  
Wet space: No  
Addition: No  
Conversion: No

**27** Floor 3 - W.I.C.



Dimensions: 4'6" x 5'1"  
Area: 23 sq. ft  
Counted as living area: Yes

Heated: Yes  
Finished: Yes  
Enclosed: Yes  
Contiguous: Yes  
Permitted: Yes  
Wet space: No  
Addition: No  
Conversion: No

**28** Floor 3 - Bath



Dimensions: 11'9" x 5'4"  
Area: 63 sq. ft  
Counted as living area: Yes

Heated: Yes  
Finished: Yes  
Enclosed: Yes  
Contiguous: Yes  
Permitted: Yes  
Wet space: Yes  
Addition: No  
Conversion: No

**29** Floor 3 - Open To Below



Dimensions: 13'0" x 11'3"  
Area: 146 sq. ft  
Counted as living area: No

Heated: No  
Finished: No  
Enclosed: No  
Contiguous: Yes  
Permitted: No  
Wet space: No  
Addition: No  
Conversion: No

1588 White Oak Road, Lake Forest, Lake County, Illinois, United States, 60045

**30** Floor 3 - Bath



Dimensions: 5'1" x 6'0"  
Area: 31 sq. ft  
Counted as living area: Yes

Heated: Yes  
Finished: Yes  
Enclosed: Yes  
Contiguous: Yes  
Permitted: Yes  
Wet space: Yes  
Addition: No  
Conversion: No

**31** Floor 3 - Bath



Dimensions: 5'1" x 5'5"  
Area: 27 sq. ft  
Counted as living area: Yes

Heated: Yes  
Finished: Yes  
Enclosed: Yes  
Contiguous: Yes  
Permitted: Yes  
Wet space: Yes  
Addition: No  
Conversion: No